



THEA-TEX

Professional Mask Manufacturer
(www.thea-tex.com)

N95 Particulate Respirator Mask (NIOSH Approved) (TT-DBN95)



Do not Reuse



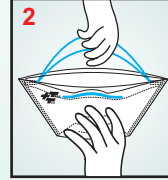
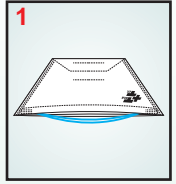
Latex Free

IMPORTANT: Read and understand warnings and fitting instructions before using this respirator mask

Manufactured By:
Thea-Tex Healthcare (India) Pvt Ltd,
Anand Mangal Industrial Estate, Vasai (E) - 401 208, India.
E-mail: N95@thea-tex.com

Fitting Instructions:

1. Identify the two head straps under the fabric flaps on the long side and pull away from the mask



2. Open the mask and ensure that the noseclip is facing upwards

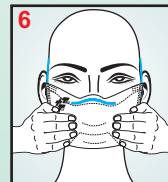
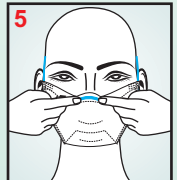


3. Place the mask over your face and both straps over the back of your head



4. Position the lower strap behind your neck and the upper strap on the crown of the head

5. Using both hands mould the noseclip to the shape of the nose



6. Check the mask for proper fit. Cup both hands over the respirator and inhale sharply. A negative pressure should be felt. If leakage is suspected tighten the noseclip and reposition the masks and straps and repeat procedure.



Thea-Tex Healthcare (India) Pvt Ltd
Waliv Phata, Vasai East, 401 208
0091-250-6450-283



THIS RESPIRATOR IS APPROVED ONLY IN THE FOLLOWING CONFIGURATIONS:

TC-	Protection ¹	Respirator	Cautions and Limitations ²
		TTDBN95	
84A-5296	N95	X	ABCJMNOP

1. Protection

N95 PARTICULATE FILTER (95% FILTER EFFICIENCY LEVEL) EFFECTIVE AGAINST PARTICULATE AEROSOLS FREE OF OIL: TIME USE RESTRICTIONS MAY APPLY.

- 2- CAUTIONS AND LIMITATIONS
 - A - Not for use in atmospheres containing less than 19.5 % oxygen.
 - B - Not for use in atmospheres immediately dangerous to life or health.
 - C - Do not exceed maximum use concentrations established by regulatory standards.
 - J - Failure to properly use and maintain this product could result in injury or death.
 - M - All approved respirators shall be selected, fitted, used, and maintained in accordance with MSHA, OSHA and other applicable regulations.
 - N - Never substitute, modify, add, and, or omit parts. Use only exact replacement parts in the configuration as specified by the manufacturer.
 - O - Refer to user instructions, and/or maintenance manuals for information on use and maintenance of the respirators.
 - P - NIOSH does not evaluate respirators for use as surgical masks.

WARNINGS : Read and understand before use.

A properly selected respirator is essential to protect your health. Before using this or any other product consult an Occupational Safety and Health Professional, or Industrial Hygienist to determine use and suitability.

This product does not protect against vapors or gases.

This product cannot be used in spray paint operations.

Do not use in sand blasting operations, or immediate area.

This product does not protect against asbestos, asbestos dust, or asbestos fibers.

This product does not supply oxygen. Use this respirator in a well ventilated area containing adequate oxygen to support life.

Do not use when concentrations of contaminants are not known, or immediately dangerous to life.

Leave the work area if breathing becomes difficult or dizziness occurs, or other signs of distress. If wearer has any illness or disorders, consult a licensed medical professional to determine suitability of respirator use.

Facial hair and certain other facial characteristics may inhibit effective use of this respirator.

Do not alter or modify this product in any way.

Follow manufacturers's instructions for proper fitting of the respirator.

Before using this respirator in occupational environments, a written respiratory protection program must be in place which meets all of the applicable requirements of the respiratory protection standard OSHA 29 CFR 1910.134 including training, fit testing, and medical evaluation.