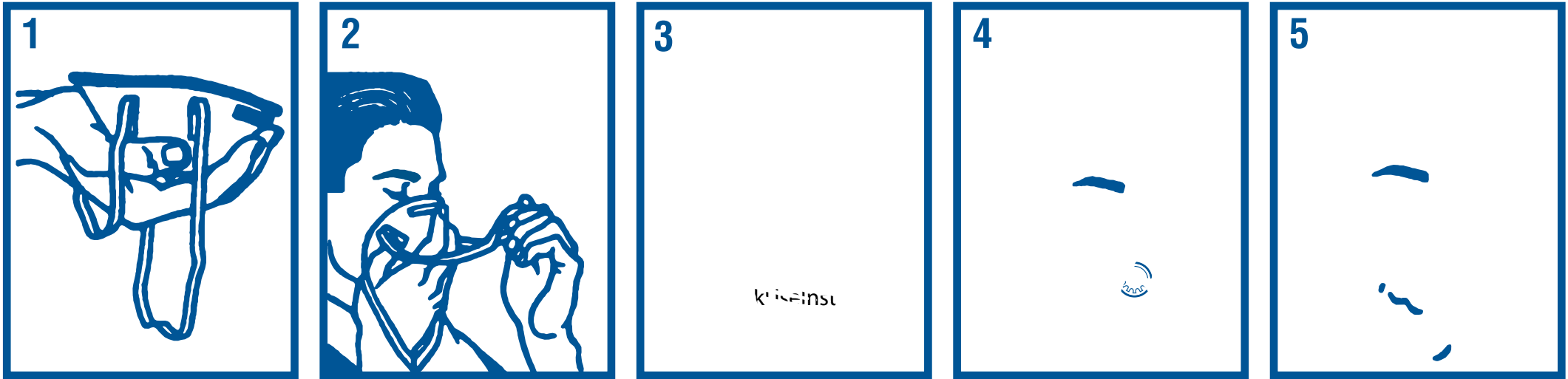


# Respirator with Valve - Use Instructions



## To test fit:

- Cup both hands over the front of the respirator, being careful not to disturb its position.
- Inhale** sharply. If leakage is suspected, adjust position of respirator and/or strap and repeat procedure.

**NOTE: Before issuing any respirator to be worn, a face fit test must be performed.**

551197 rev A, DATE: 5/10/07  
551197a-MaskUseInstr-wValve-051007gTY.pdf