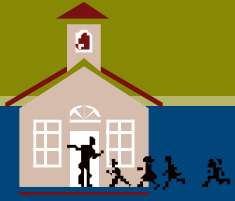


Profiles 2010 - Selected Topics

Nez Perce Secondary Schools



The **School Health Profiles (Profiles)** is a system of surveys assessing school health policies and practices in states, territories, and large urban school districts. Profiles surveys are conducted biennially among representative samples of middle and high school principals and lead health education teachers.

Health Education	Among Tribes*		Nez Perce %
	Median	Range	
Percentage of schools that required students to take 2 or more health education courses	55.5	(11.0 – 100.0)	100.0
Among schools that required a health education course, percentage that required students who fail the course to repeat it	54.8	(23.8 – 85.7)	85.7
Percentage of schools with a health education curriculum that addresses all 8 national standards for health education	56.7	(56.3 – 57.1)	57.1
Percentage of schools in which the lead health education teacher had professional preparation in health education or in health and physical education combined	65.5	(47.7 – 83.3)	83.3
Percentage of schools in which all staff who teach health education were certified, licensed, or endorsed by the state in health education	89.7	(79.3 – 100.0)	100.0
Percentage of schools in which those who teach health education were provided with key materials for teaching health education	53.2	(49.3 – 57.1)	57.1
HIV, Other STD, and Teen Pregnancy Prevention			
Percentage of schools that taught 11 key HIV, STD, or pregnancy prevention topics in a required course during grades 6, 7, or 8	39.8	(33.3 – 46.3)	33.3
Percentage of schools that taught 8 key HIV, STD, or pregnancy prevention topics in a required course during grades 9, 10, 11 or 12	75.8	(51.5 – 100.0)	100.0
Percentage of schools that taught 4 key topics related to condom use in a required course during grades 9, 10, 11, or 12	69.9	(39.7 – 100.0)	100.0
Percentage of schools that taught how to access valid and reliable health information, products, or services related to HIV, other STDs, and pregnancy in a required course	73.0	(62.6 – 83.3)	83.3
Percentage of schools in which the lead health education teacher received professional development during the 2 years before the survey on HIV prevention	53.5	(42.9 – 64.1)	42.9
Percentage of schools with a gay/straight alliance or similar club	7.6	(0.0 – 15.1)	0.0
Percentage of schools that provided curricula or supplementary materials and engaged in 5 practices related to lesbian, gay, bisexual, transgender, or questioning (LGBTQ) youth	10.4	(4.0 – 16.7)	16.7
Percentage of schools with a policy on students or staff who have HIV infection or AIDS that addresses attendance of students with HIV infection, procedures to protect HIV-infected students and staff from discrimination, and maintaining confidentiality of HIV-infected students and staff	68.1	(57.1 – 79.1)	57.1

* Among the 2 participating tribes with weighted survey results.

Where can I get more information? Visit www.cdc.gov/healthyyouth or call 800 CDC-INFO (800-232 4636).

National Center for Chronic Disease Prevention and Health Promotion
Division of Adolescent and School Health



Profiles 2010 - Selected Topics

Nez Perce Secondary Schools



The **School Health Profiles (Profiles)** is a system of surveys assessing school health policies and practices in states, territories, and large urban school districts. Profiles surveys are conducted biennially among representative samples of middle and high school principals and lead health education teachers.

Asthma	Among Tribes*		Nez Perce %
	Median	Range	
Percentage of schools with a full-time registered nurse who provides health services to students at school	22.3	(0.0 – 44.6)	0.0
Percentage of schools that implemented a policy permitting students to carry and self-administer asthma medications by communicating the policy to students, parents, and families, and by designating an individual responsible for implementing the policy	49.1	(42.9 – 55.2)	42.9
Percentage of schools that had an asthma action plan on file for all students with known asthma	66.4	(61.4 – 71.4)	71.4
Percentage of schools that identified students with poorly controlled asthma by keeping track of them in at least 3 different ways	60.7	(54.6 – 66.7)	66.7
Percentage of schools that provided intensive case management for students with poorly controlled asthma at school	10.8	(0.0 – 21.5)	0.0
Percentage of schools that required all school staff members to receive annual training on recognizing and responding to severe asthma symptoms	32.9	(28.6 – 37.2)	28.6
Percentage of schools that provided parents and families with health information to increase parent and family knowledge of asthma	24.1	(14.3 – 33.9)	14.3
School Health Coordination			
Percentage of schools that had a school health council, committee, or team that offers guidance on the development of policies or coordinates activities on health topics	68.9	(57.1 – 80.6)	57.1

* Among the 2 participating tribes with weighted survey results.

Where can I get more information? Visit www.cdc.gov/healthyyouth or call 800 CDC-INFO (800-232 4636).

National Center for Chronic Disease Prevention and Health Promotion
Division of Adolescent and School Health

