

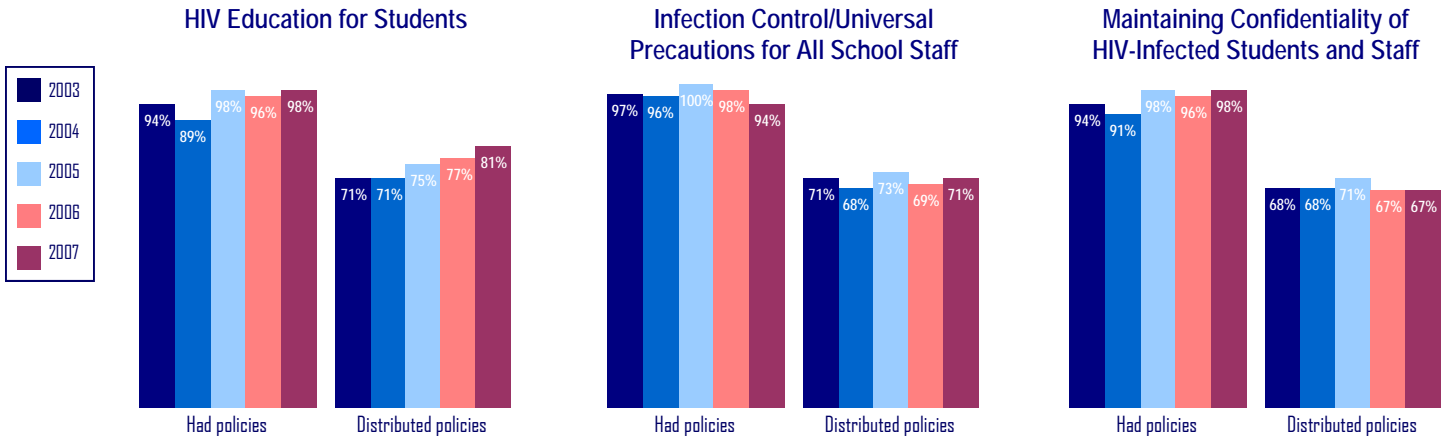
INDICATORS

HIV Prevention Conducted by State Education Agencies*

Fiscal Years 1–5: March 1, 2003 – February 29, 2008

Policy

Percentage of State HIV Projects That Had or Distributed Model Policies, Policy Standards, or Other Policy Materials to Districts or Schools about the Following Topics

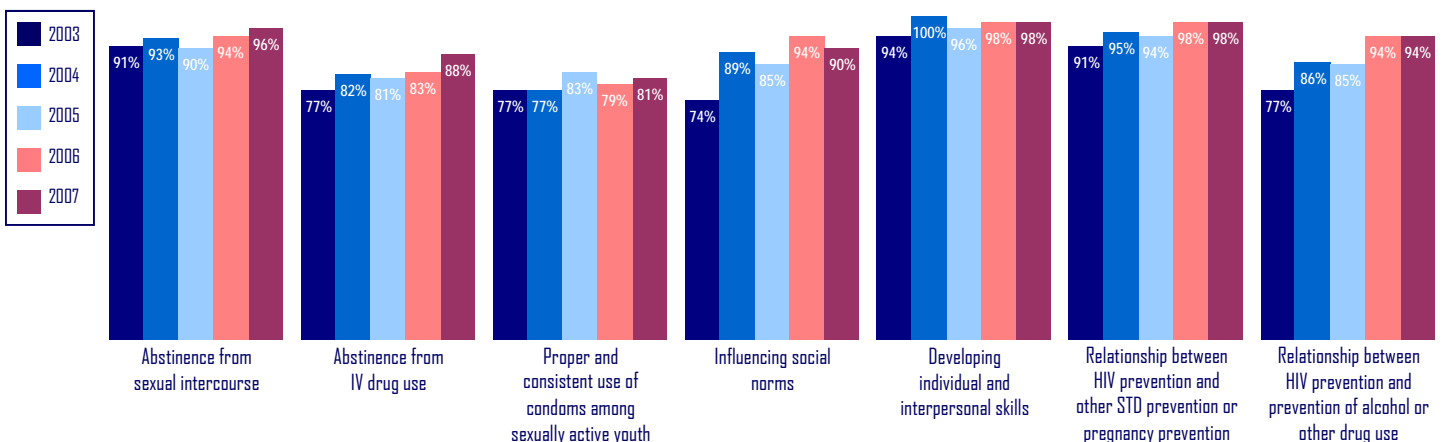


Curricula and Instruction

Percentage of State HIV Projects That Participated in the Following Activities to Help Districts or Schools with HIV Curricula or Instruction

	2003	2004	2005	2006	2007
Provided professional development about exemplary HIV curricula or instruction	91%	93%	98%	92%	92%
Provided professional development about specific HIV prevention education curricula/programs for youth	74%	75%	75%	73%	67%
Provided individualized technical assistance about HIV curricula or instruction	77%	93%	77%	79%	79%

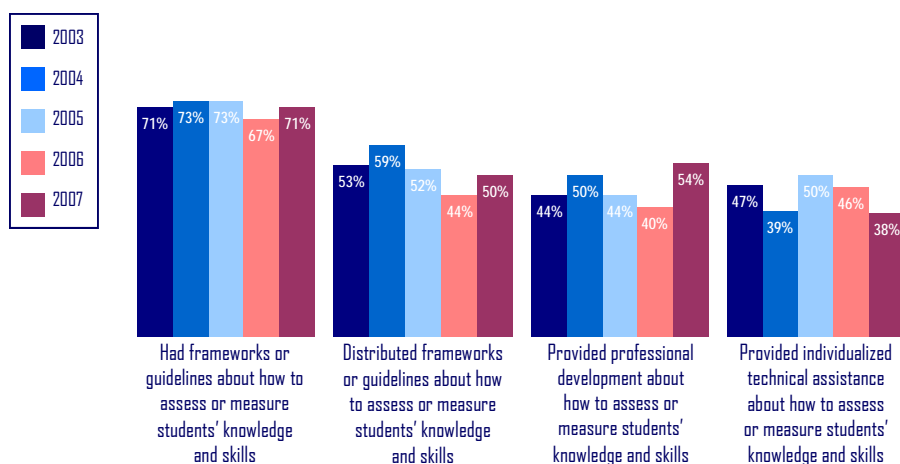
Percentage of State HIV Projects That Emphasized Each of the Following Topics in Curricula or Instruction



*In fiscal year 2003, 34 of 48 (71%) state education agencies responded. In fiscal year 2004, 44 of 48 (92%) state education agencies responded. In fiscal years 2005, 2006, and 2007, 48 of 48 (100%) state education agencies responded.

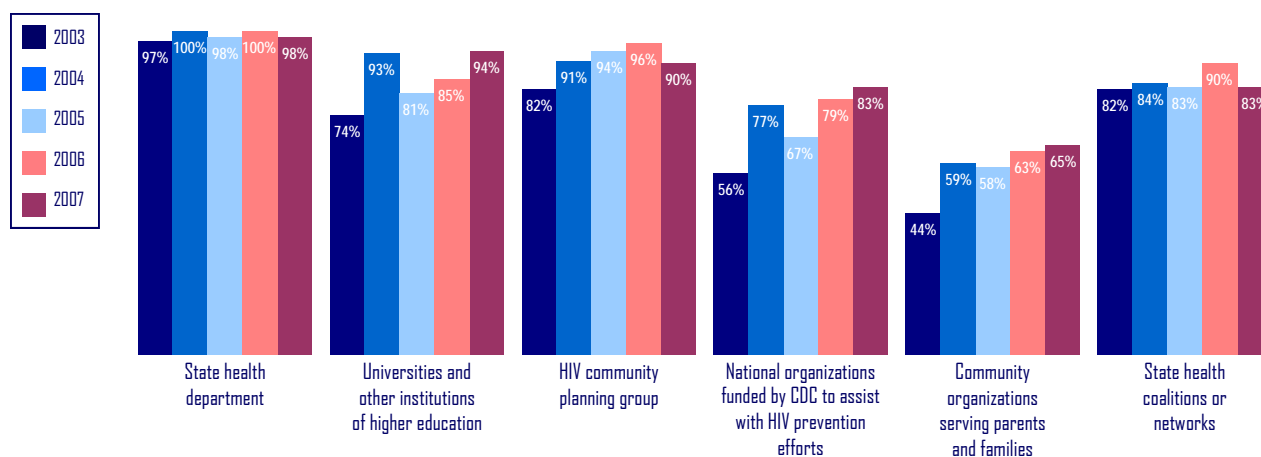
Assessment of Student Performance

Percentage of State HIV Projects That Participated in Any of the Following Activities to Help Districts or Schools Assess or Measure, at the Classroom Level, Students' Knowledge and Skills Regarding HIV Prevention



External Collaboration

Percentage of State HIV Projects That Collaborated with Each of the Following External Partners



Percentage of State HIV Projects That Described Their Relationship with the State CDC-Sponsored Community Planning Group for HIV Prevention in the Following Manner

	2003	2004	2005	2006	2007
No one attended	15%	9%	6%	4%	4%
Attended to observe only	9%	9%	10%	6%	8%
Attended and served as a content expert or technical advisor with no voting privileges	41%	43%	44%	38%	38%
Attended and had voting privileges	35%	36%	38%	42%	40%
Other	0%	2%	2%	10%	10%