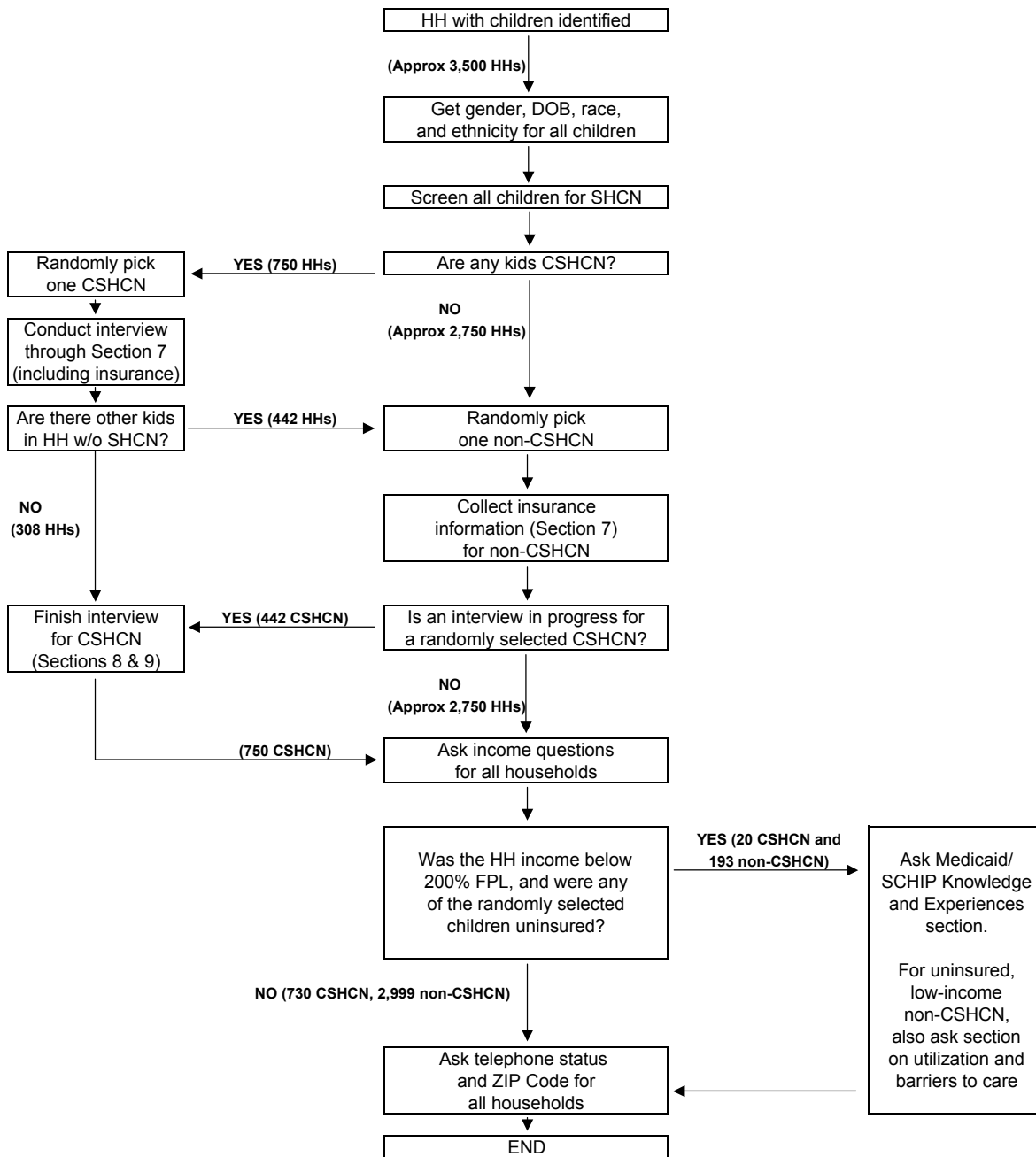




**State and Local Area Integrated Telephone Survey
Survey of Children with Special Health Care Needs
Anticipated Approximate FINAL Sample for an Average State**



**Anticipated Approximate Final Sample Sizes
for an Average State:**

308 HHs with 1 sampled CSHCN
2,750 HHs with 1 sampled non-CSHCN
442 HHs with 2 sampled children (1 CSHCN, 1 non-CSHCN)

750 long interviews with CSHCN
3,192 health insurance interviews with non-CSHCN
213 Medicaid/SCHIP interviews with eligible but uninsured children