



Shanksville



New York City



Pentagon

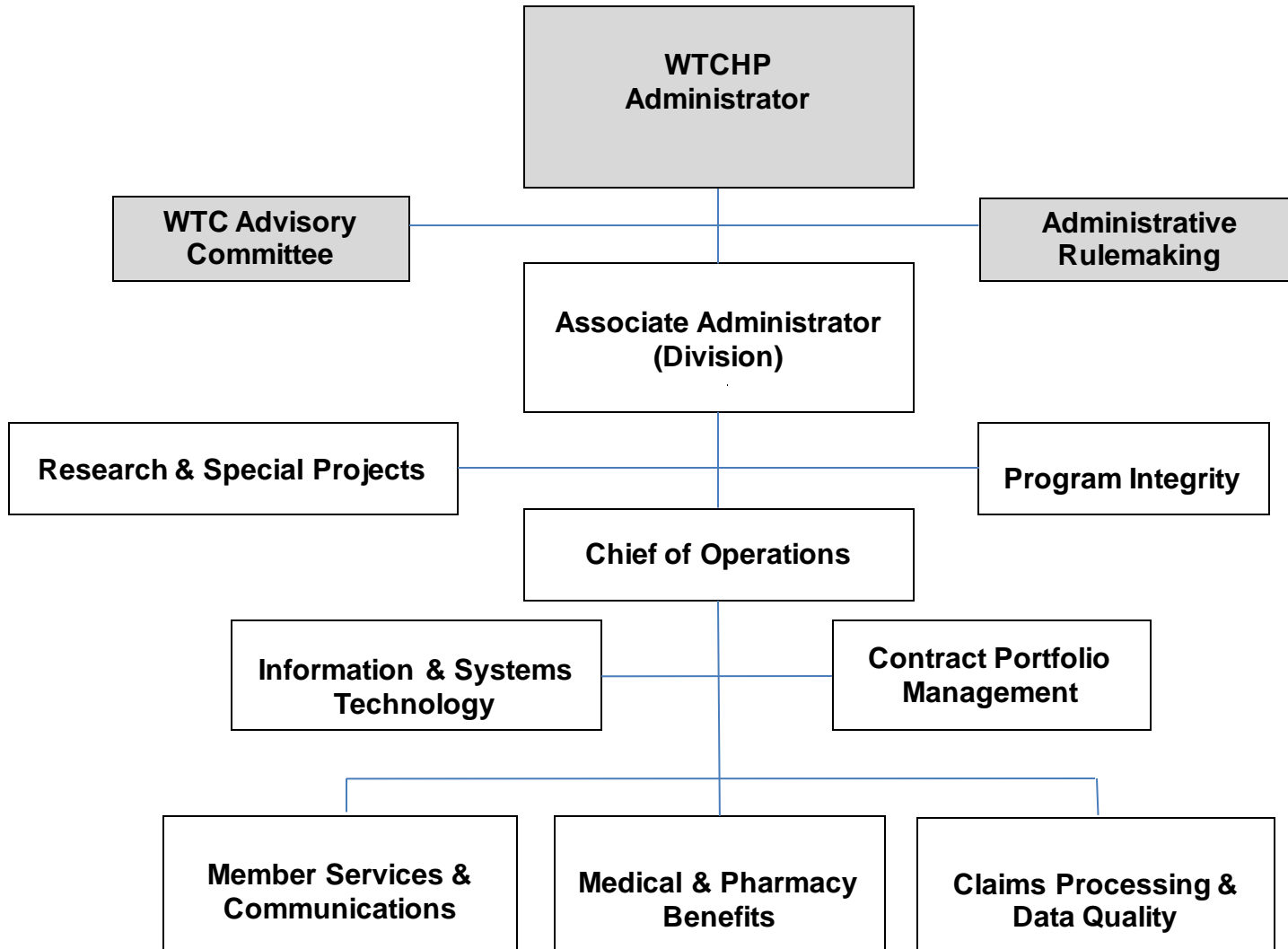
Research-to-Care Model

Dori Reissman, MD MPH

Associate Administrator, WTCHP

June 04, 2015

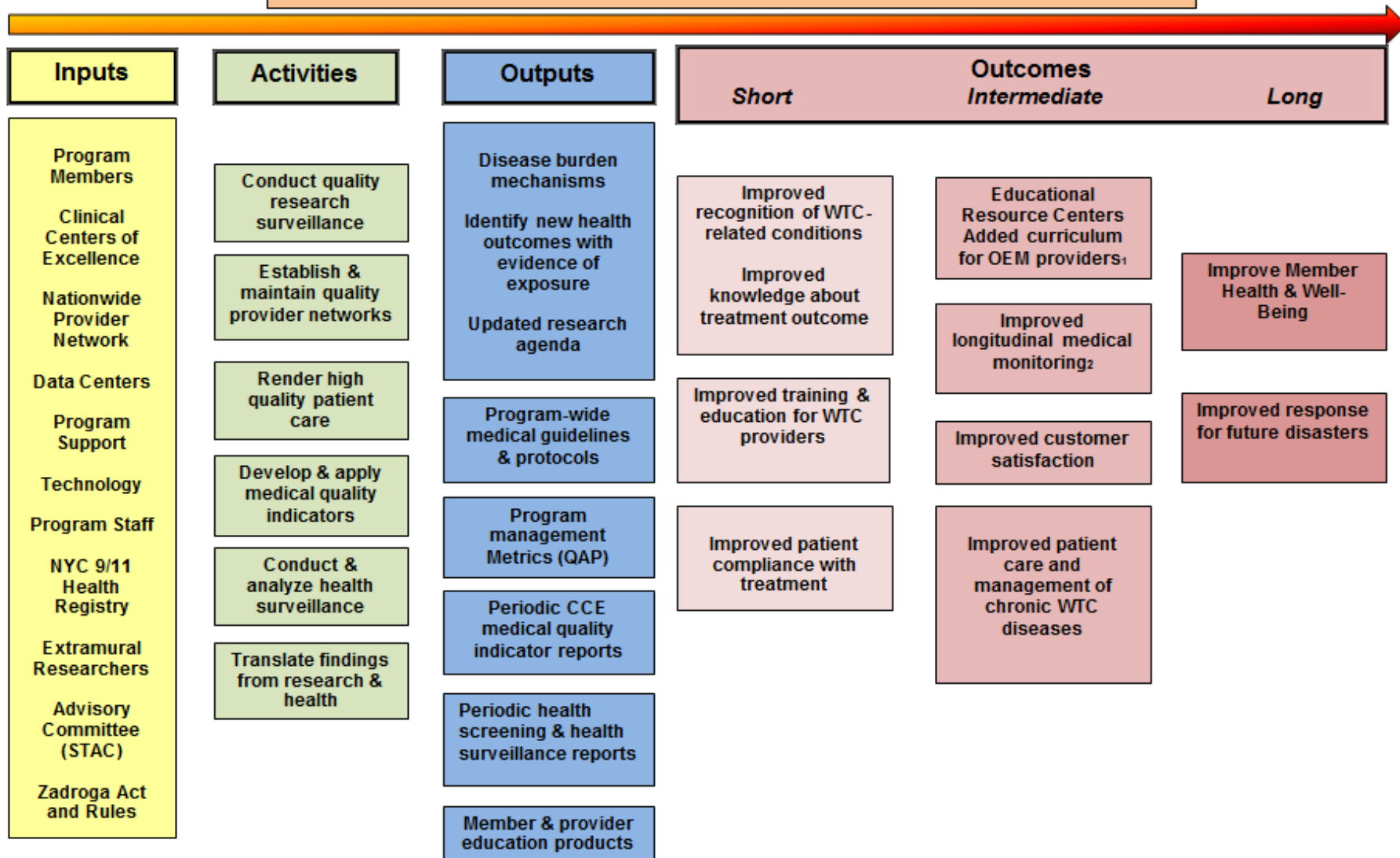
HEALTH PROGRAM



Why use a logic model?

- Capture strategic program framework
- Ensure connectivity of the stakeholders to researchers, clinicians and program administrators
- Ensure research and data analysis actively informs excellence in clinical care
- Communication tool for program design
- Considers goals over time

WTC Health Program Research-to-Care Logic Model (iterative)



Contextual Conditions:

- Legislative environment: HIPAA, Federal Employee Compensation Act, Social Security Act, Affordable Care Act
- Limited care model (not a medical home)
- Program enrollment (low statistical power)

¹ NIOSH funded program for training physicians and allied health professionals in occupational and environmental medicine (OEM)

² To inform decision support for *ERHMS* (Emergency Responder Health Monitoring System)