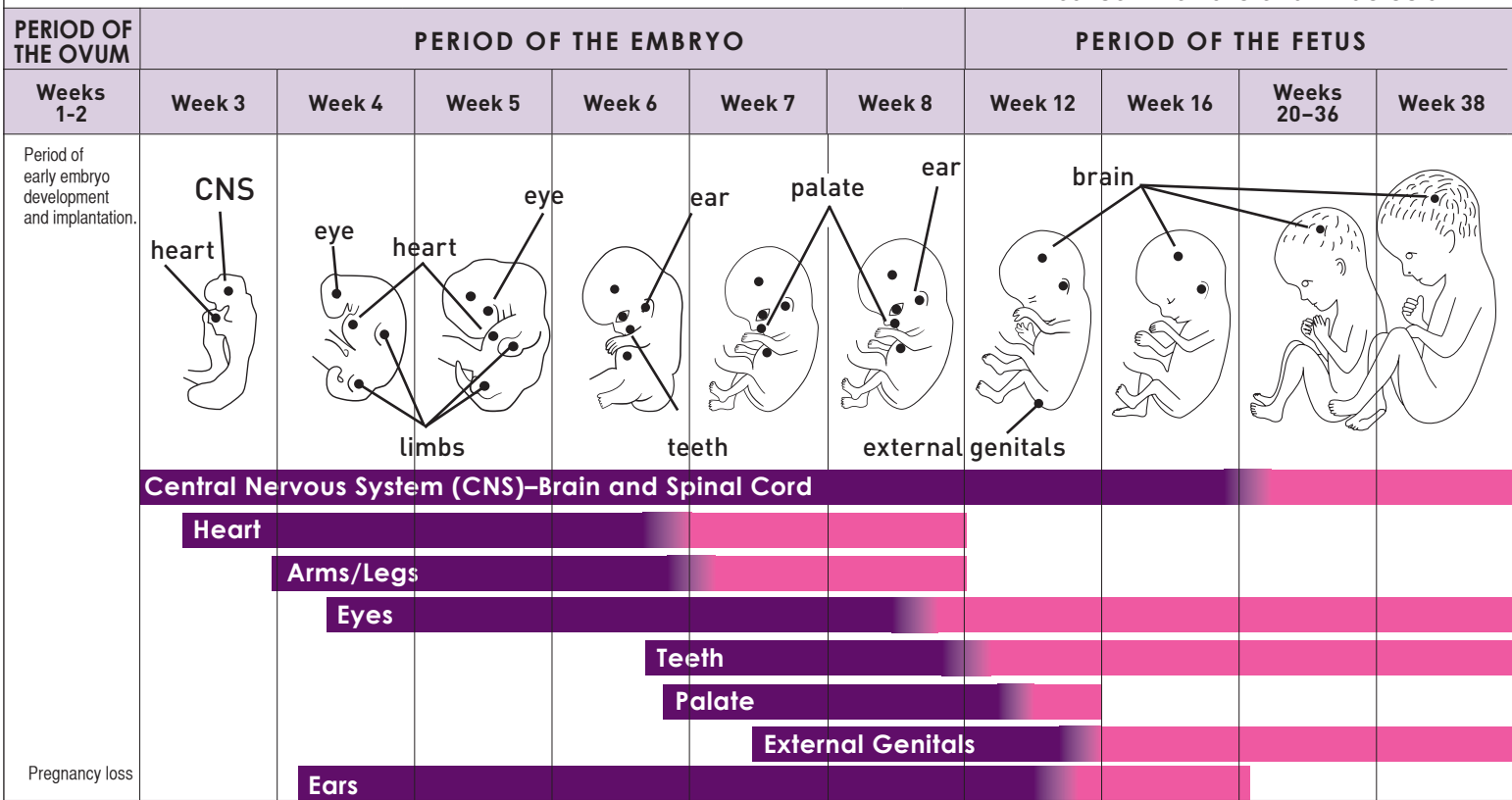


# FETAL DEVELOPMENT CHART

This chart shows vulnerability of the fetus to defects throughout 38 weeks of pregnancy.\*  
 • = Most common site of birth defects



Period of development when major defects in bodily structure can occur.  
 Period of development when major functional defects and minor structural defects can occur.

Adapted from Moore, 1993 and the National Organization on Fetal Alcohol Syndrome (NOFAS) 2009  
 \*This fetal chart shows the 38 weeks of pregnancy. Since it is difficult to know exactly when conception occurs, health care providers calculate a woman's due date 40 weeks from the start of her last menstrual cycle.