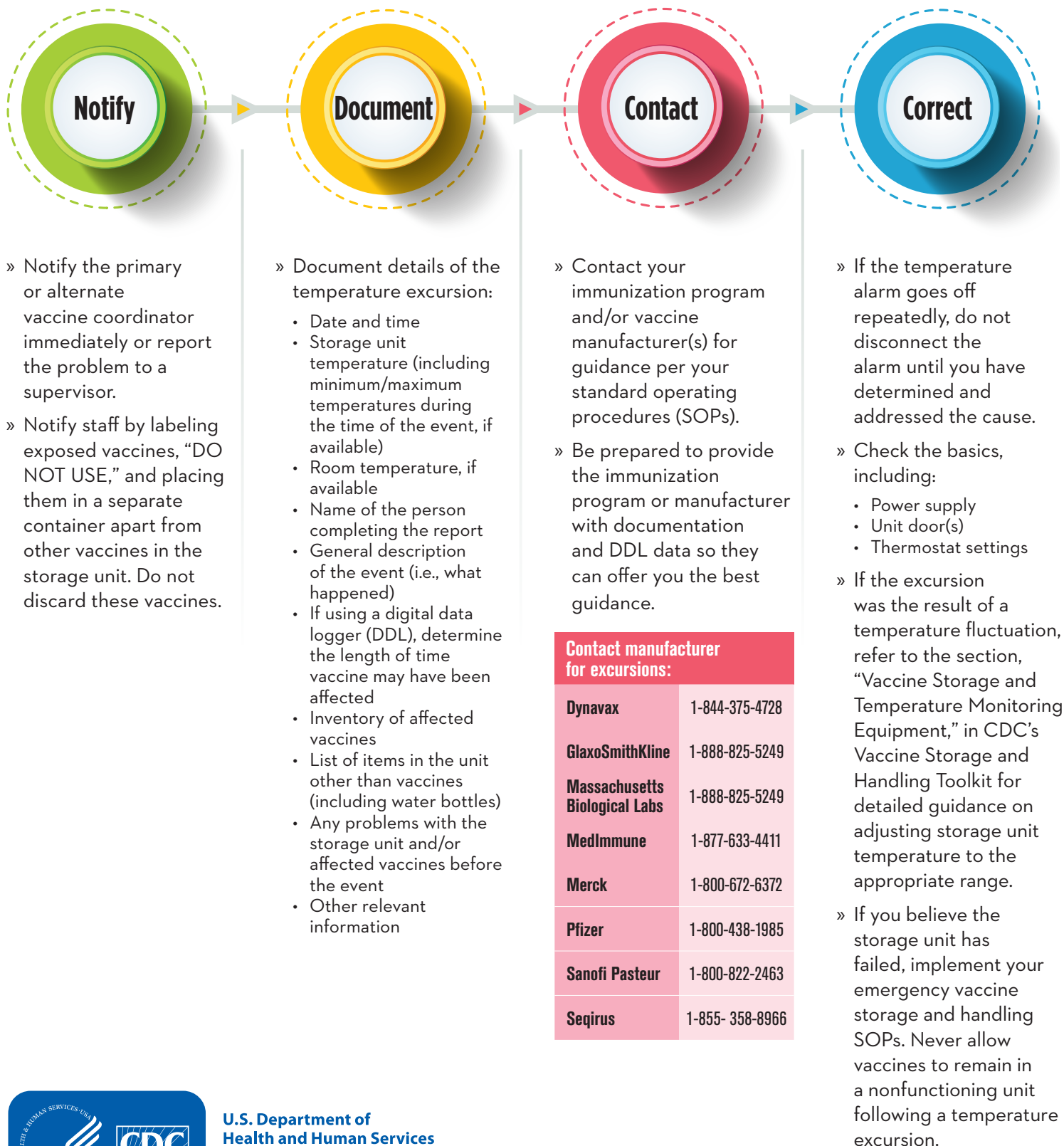


Handling a Temperature Excursion in Your Vaccine Storage Unit

Any temperature reading outside ranges recommended in the manufacturers' package inserts is considered a temperature excursion. Identify temperature excursions quickly and take immediate action to correct them. This can prevent vaccine waste and the potential need to revaccinate patients.



U.S. Department of Health and Human Services
Centers for Disease Control and Prevention