



SUMMARY AND NEXT STEPS FOR TBE VACCINE WORK GROUP

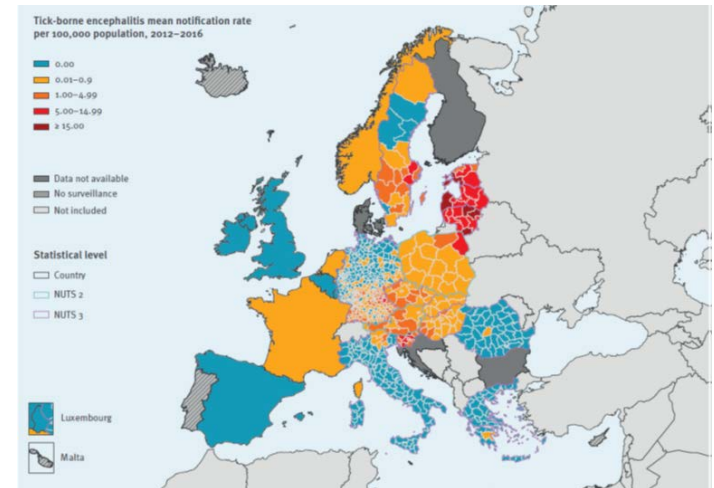
Susan Hills, MBBS, MTH
Medical Epidemiologist
Arboviral Diseases Branch
Centers for Disease Control and Prevention

February 24, 2021

Summary of issues that will inform TBE vaccine recommendations

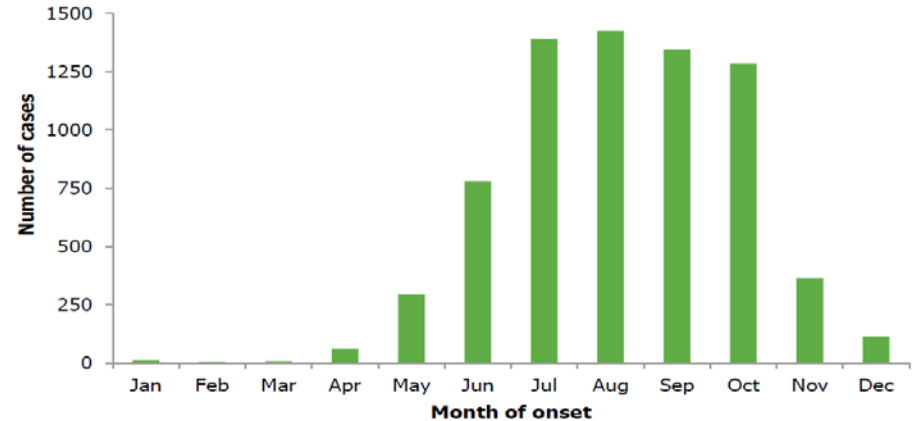
Risk locations

- Comprehensive data limited
- Focal locations
- Precise areas hard to define
- Incidence variable place to place
- Transmission levels fluctuate
- Low risk urban areas



Risk period

- Seasonal risk from April to November when ticks are active



TBE cases in nine European countries, 2000–2010

Disease risk

- Very low numbers of cases among US persons
 - 11 cases in US civilian travelers, 2000–2020
 - 9 cases in military personnel, 2006–2020
- Potentially high morbidity and mortality
 - Case fatality rates 1–20%
 - Sequelae rates 10–80%



Photo credits: Getty images

Key risk factors for infection

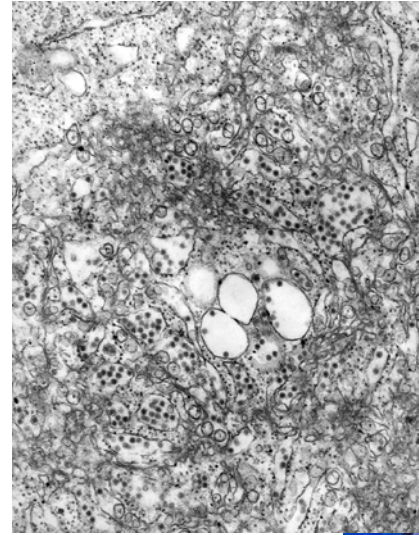
- Exposure to ticks
 - *Recreational activities* including hiking, camping, fishing, cycling, bird-watching, or foraging for mushrooms, berries, or flowers
 - *Occupations* including forestry workers and military personnel



<https://www.ecdc.europa.eu/en/tick-borne-encephalitis>; ©ECDC/Photo by Guy Hendrickx

Risk for laboratory workers

- Exposure to TBE virus through aerosol or other routes
- Small number of infections, but high likelihood of disease among those with an exposure

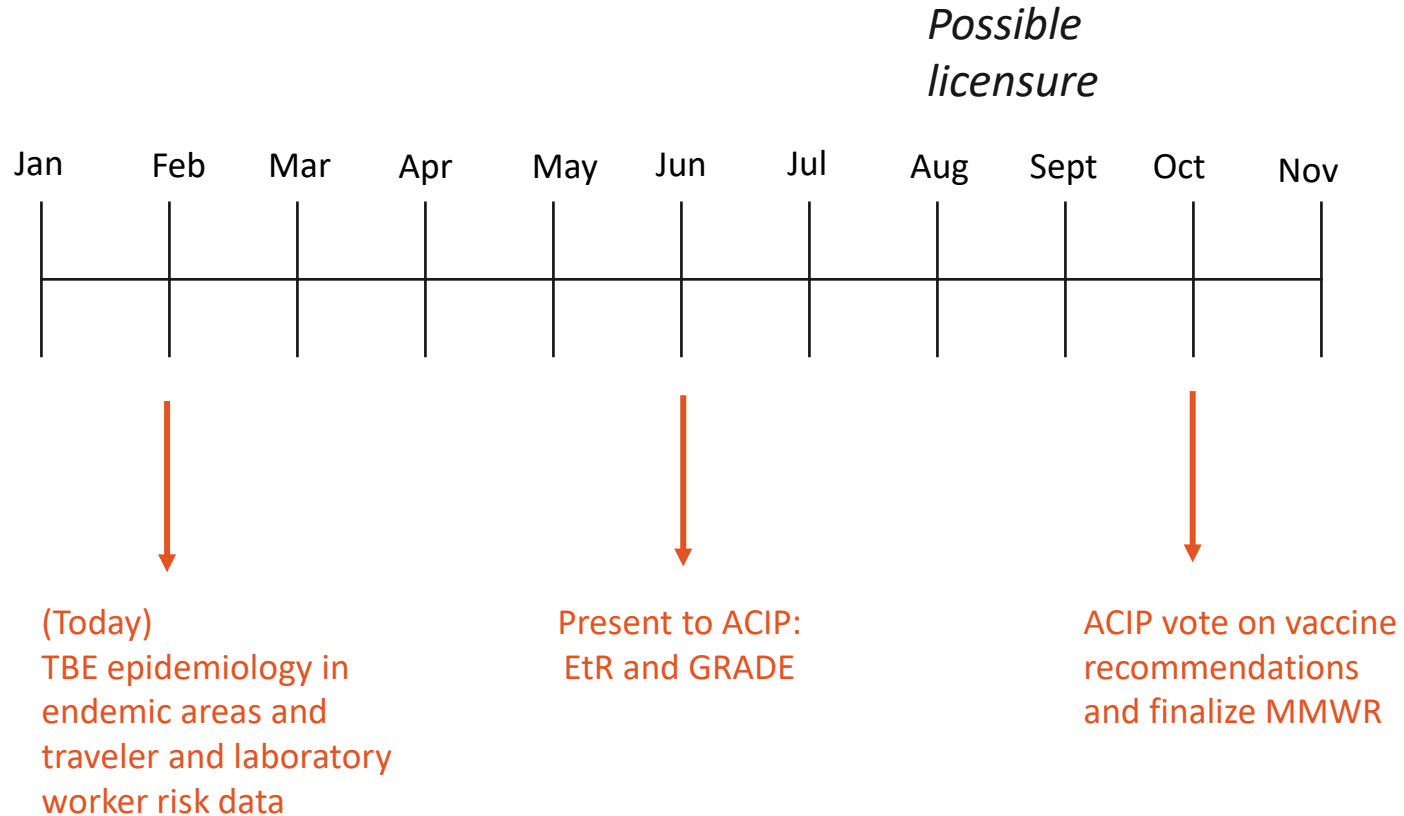


TBE virus (Photo credit: Alamy images)



Next steps

Work Group timeline (planned), Feb 2021–Oct 2021



Policy question for TBE vaccine GRADE

- Should TBE vaccine be recommended for use in persons aged ≥ 1 year traveling to or residing in TBE risk areas and in laboratory staff working with TBE virus?

For more information, contact CDC
1-800-CDC-INFO (232-4636)
TTY: 1-888-232-6348 www.cdc.gov

The findings and conclusions in this report are those of the authors and do not necessarily represent the official position of the Centers for Disease Control and Prevention.

