

Alabama, 2008

Primary and secondary syphilis

- CASES: Alabama reported 449 cases in 2008.
- RATES: Alabama ranked 3 among 50 states; Washington, DC; and 3 territories with 9.7 cases per 100,000 population compared to the U.S. rate of 4.5 cases per 100,000 population.

Rates of primary and secondary syphilis, by sex

- In Alabama, the rate among males was 12.4 per 100,000 population compared to the U.S. male rate of 7.6 per 100,000.
- The rate among females was 7.2 per 100,000 compared to the U.S. female rate of 1.5 per 100,000.

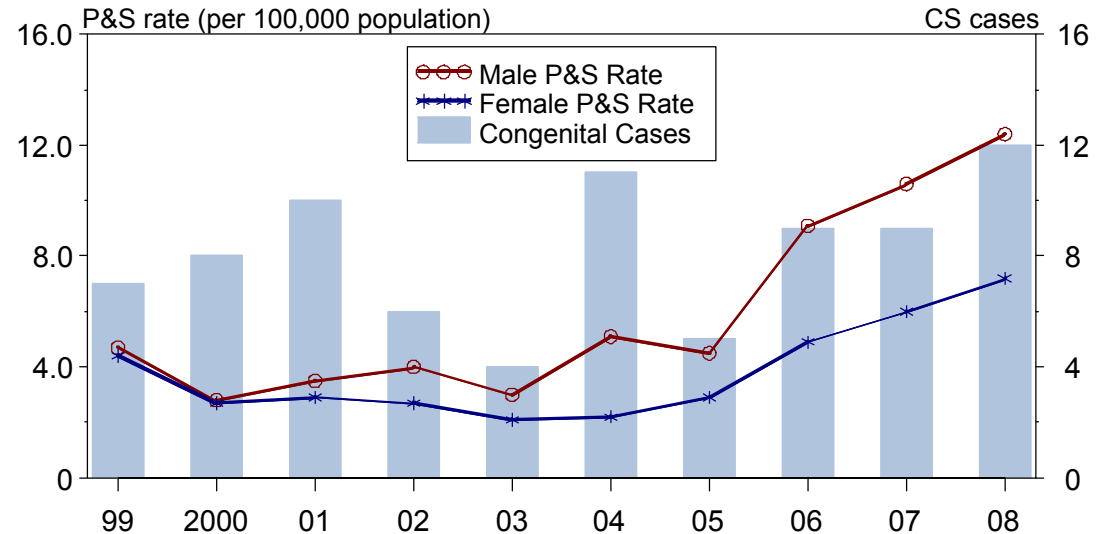
Rates of primary and secondary syphilis, by race/ethnicity

- In Alabama, the race/ethnicity adjusted rates per 100,000 population were 2.5 among whites, 28.6 among blacks, 14.4 among Hispanics, 2.1 among Asian/Pacific Islanders, and 0.0 among American Indians/Alaska Natives.
- The rate among blacks was 11.4 times that of whites.
- The rate among Hispanics was 5.8 times that of whites.

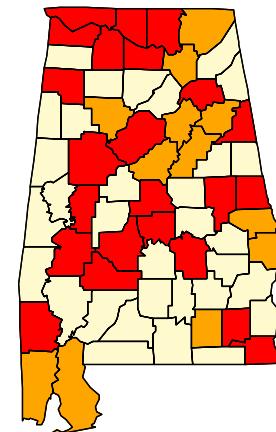
Congenital syphilis

- CASES: Alabama reported 12 cases in 2008.
- RATES: Alabama ranked 7 among 26 states; Washington, DC; and 1 territory reporting congenital syphilis cases with a rate of 19.0 cases per 100,000 live births compared to the U.S. rate of 10.1 cases per 100,000.

Syphilis: P&S Rates and Congenital Cases, Alabama, 1999-2008



Total P&S Syphilis Rates by County, Alabama, 2008



Rate (per 100,000 population)



Alaska, 2008

Primary and secondary syphilis

- CASES: Alaska reported 1 case in 2008.
- RATES: Alaska ranked 51 among 50 states; Washington, DC; and 3 territories with 0.1 cases per 100,000 population compared to the U.S. rate of 4.5 cases per 100,000 population.

Rates of primary and secondary syphilis, by sex

- In Alaska, the rate among males was 0.3 per 100,000 population compared to the U.S. male rate of 7.6 per 100,000.
- The rate among females was 0.0 per 100,000 compared to the U.S. female rate of 1.5 per 100,000.

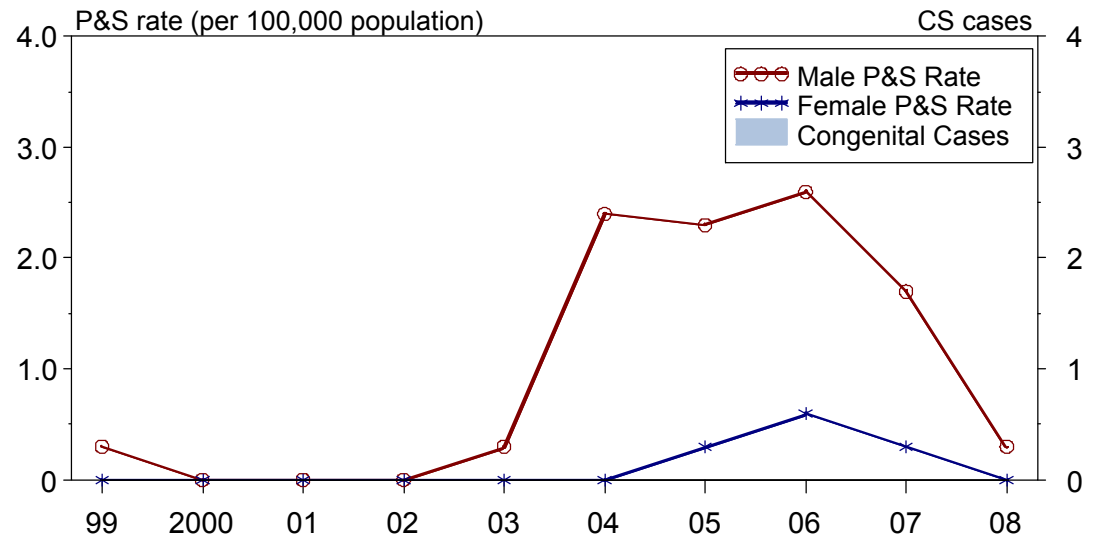
Rates of primary and secondary syphilis, by race/ethnicity

- In Alaska, the race/ethnicity adjusted rates per 100,000 population were 0.0 among whites, 3.1 among blacks, 0.0 among Hispanics, 0.0 among Asian/Pacific Islanders, and 0.0 among American Indians/Alaska Natives.

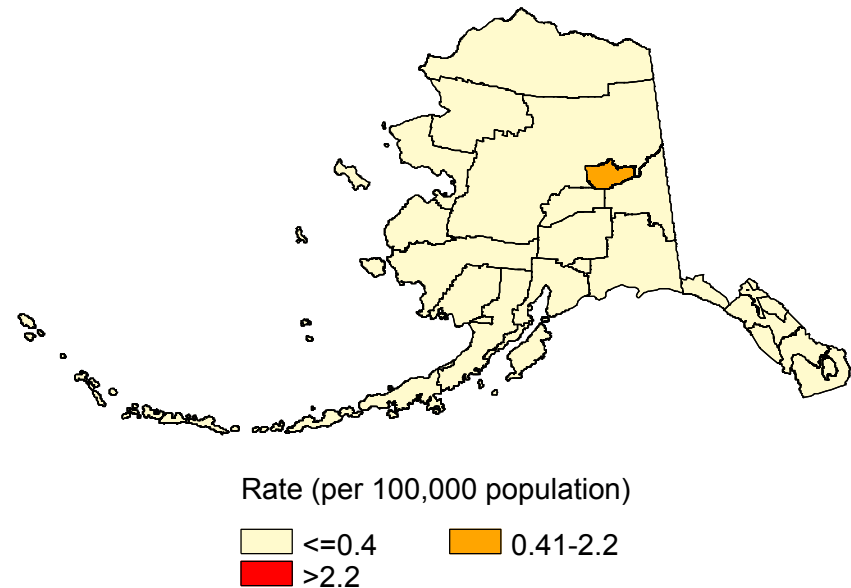
Congenital syphilis

- CASES: Alaska reported 0 cases in 2008.
- RATES: Alaska had a rate of 0.0 cases per 100,000 live births compared to the U.S. rate of 10.1 cases per 100,000.

Syphilis: P&S Rates and Congenital Cases, Alaska, 1999-2008



Total P&S Syphilis Rates by County, Alaska, 2008



Arizona, 2008

Primary and secondary syphilis

- CASES: Arizona reported 317 cases in 2008.
- RATES: Arizona ranked 13 among 50 states; Washington, DC; and 3 territories with 5 cases per 100,000 population compared to the U.S. rate of 4.5 cases per 100,000 population.

Rates of primary and secondary syphilis, by sex

- In Arizona, the rate among males was 8.2 per 100,000 population compared to the U.S. male rate of 7.6 per 100,000.
- The rate among females was 1.8 per 100,000 compared to the U.S. female rate of 1.5 per 100,000.

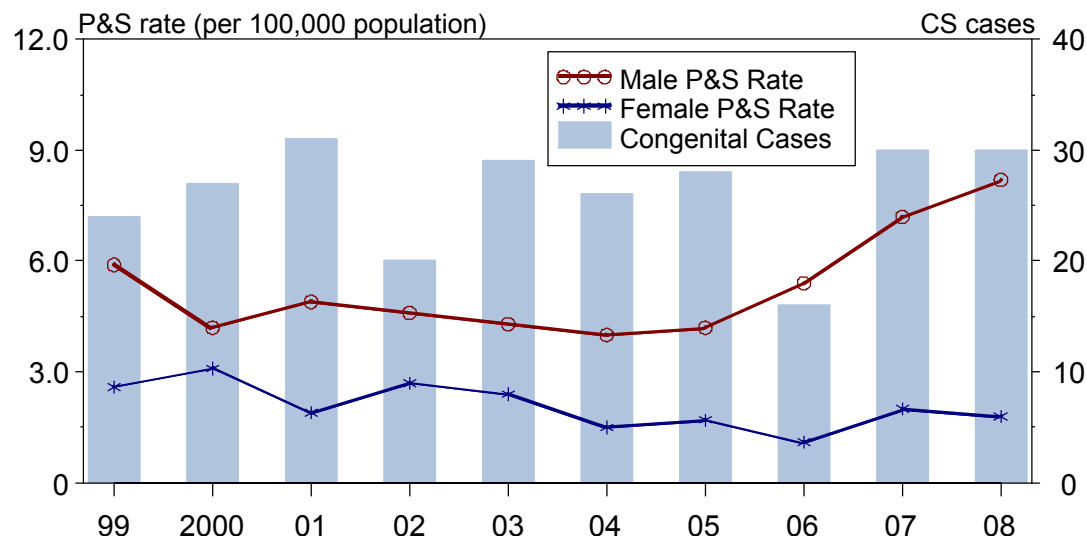
Rates of primary and secondary syphilis, by race/ethnicity

- In Arizona, the race/ethnicity adjusted rates per 100,000 population were 4.0 among whites, 11.8 among blacks, 6.2 among Hispanics, 3.0 among Asian/Pacific Islanders, and 5.6 among American Indians/Alaska Natives.
- The rate among blacks was 3 times that of whites.
- The rate among Hispanics was 1.6 times that of whites.
- The rate among American Indians/Alaska Natives was 1.4 times that of whites.

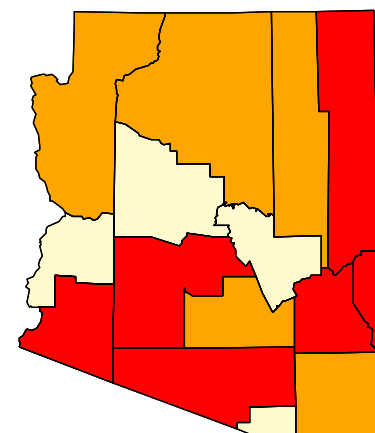
Congenital syphilis

- CASES: Arizona reported 30 cases in 2008.
- RATES: Arizona ranked 4 among 26 states; Washington, DC; and 1 territory reporting congenital syphilis cases with a rate of 29.3 cases per 100,000 live births compared to the U.S. rate of 10.1 cases per 100,000.

Syphilis: P&S Rates and Congenital Cases, Arizona, 1999-2008



Total P&S Syphilis Rates by County, Arizona, 2008



Rate (per 100,000 population)



Arkansas, 2008

Primary and secondary syphilis

- CASES: Arkansas reported 206 cases in 2008.
- RATES: Arkansas ranked 5 among 50 states; Washington, DC; and 3 territories with 7.3 cases per 100,000 population compared to the U.S. rate of 4.5 cases per 100,000 population.

Rates of primary and secondary syphilis, by sex

- In Arkansas, the rate among males was 9.0 per 100,000 population compared to the U.S. male rate of 7.6 per 100,000.
- The rate among females was 5.6 per 100,000 compared to the U.S. female rate of 1.5 per 100,000.

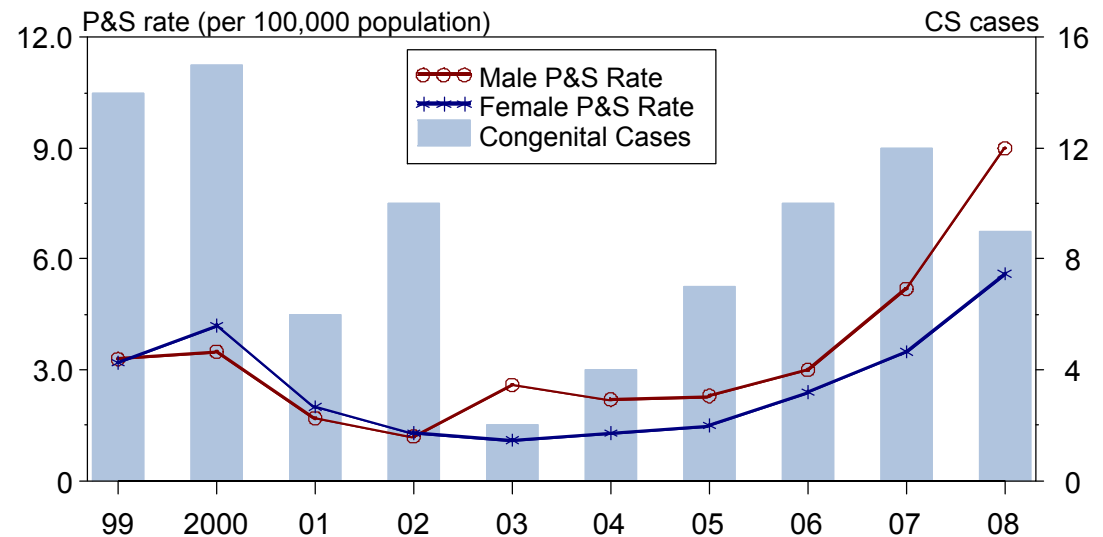
Rates of primary and secondary syphilis, by race/ethnicity

- In Arkansas, the race/ethnicity adjusted rates per 100,000 population were 2.7 among whites, 32.1 among blacks, 0.0 among Hispanics, 5.9 among Asian/Pacific Islanders, and 0.0 among American Indians/Alaska Natives.
- The rate among blacks was 11.9 times that of whites.
- The rate among Asian/Pacific Islanders was 2.2 times that of whites.

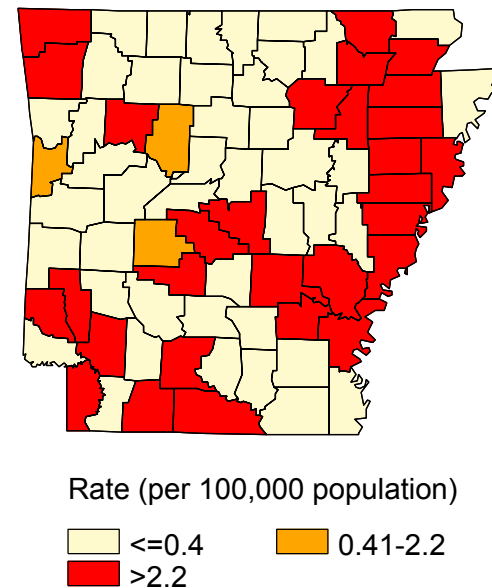
Congenital syphilis

- CASES: Arkansas reported 9 cases in 2008.
- RATES: Arkansas ranked 6 among 26 states; Washington, DC; and 1 territory reporting congenital syphilis cases with a rate of 22.0 cases per 100,000 live births compared to the U.S. rate of 10.1 cases per 100,000.

Syphilis: P&S Rates and Congenital Cases, Arkansas, 1999-2008



Total P&S Syphilis Rates by County, Arkansas, 2008



California, 2008

Primary and secondary syphilis

- CASES: California reported 2,204 cases in 2008.
- RATES: California ranked 10 among 50 states; Washington, DC; and 3 territories with 6 cases per 100,000 population compared to the U.S. rate of 4.5 cases per 100,000 population.

Rates of primary and secondary syphilis, by sex

- In California, the rate among males was 11.4 per 100,000 population compared to the U.S. male rate of 7.6 per 100,000.
- The rate among females was 0.6 per 100,000 compared to the U.S. female rate of 1.5 per 100,000.

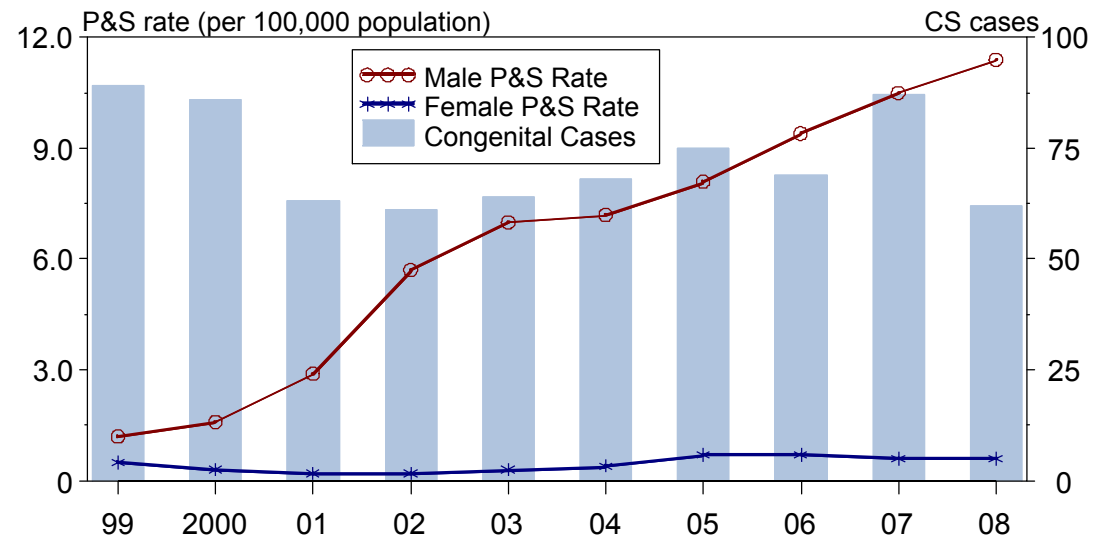
Rates of primary and secondary syphilis, by race/ethnicity

- In California, the race/ethnicity adjusted rates per 100,000 population were 6.2 among whites, 15.1 among blacks, 5.6 among Hispanics, 2.2 among Asian/Pacific Islanders, and 3.0 among American Indians/Alaska Natives.
- The rate among blacks was 2.4 times that of whites.

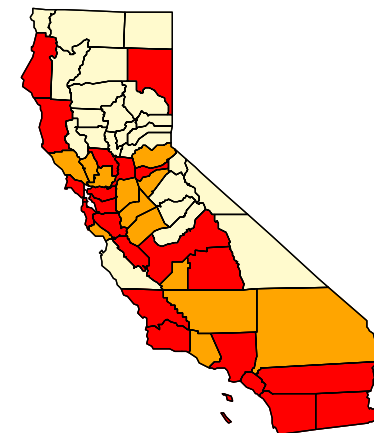
Congenital syphilis

- CASES: California reported 62 cases in 2008.
- RATES: California ranked 12 among 26 states; Washington, DC; and 1 territory reporting congenital syphilis cases with a rate of 11.0 cases per 100,000 live births compared to the U.S. rate of 10.1 cases per 100,000.

Syphilis: P&S Rates and Congenital Cases, California, 1999-2008



Total P&S Syphilis Rates by County, California, 2008



Rate (per 100,000 population)



Colorado, 2008

Primary and secondary syphilis

- CASES: Colorado reported 128 cases in 2008.
- RATES: Colorado ranked 24 among 50 states; Washington, DC; and 3 territories with 2.6 cases per 100,000 population compared to the U.S. rate of 4.5 cases per 100,000 population.

Rates of primary and secondary syphilis, by sex

- In Colorado, the rate among males was 5.1 per 100,000 population compared to the U.S. male rate of 7.6 per 100,000.
- The rate among females was 0.1 per 100,000 compared to the U.S. female rate of 1.5 per 100,000.

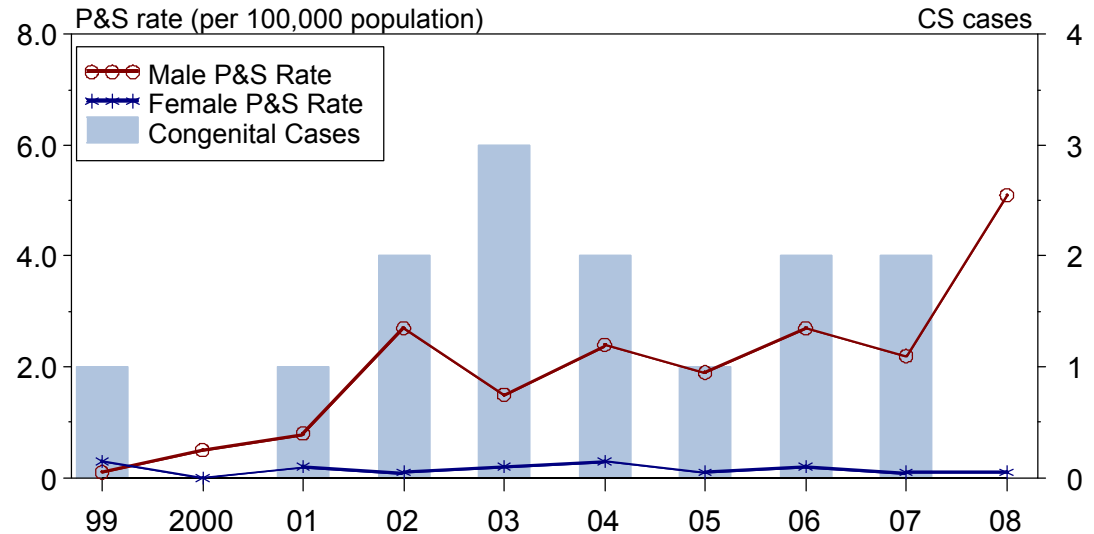
Rates of primary and secondary syphilis, by race/ethnicity

- In Colorado, the race/ethnicity adjusted rates per 100,000 population were 2.4 among whites, 6.3 among blacks, 3.1 among Hispanics, 0.7 among Asian/Pacific Islanders, and 2.5 among American Indians/Alaska Natives.
- The rate among blacks was 2.6 times that of whites.
- The rate among Hispanics was 1.3 times that of whites.

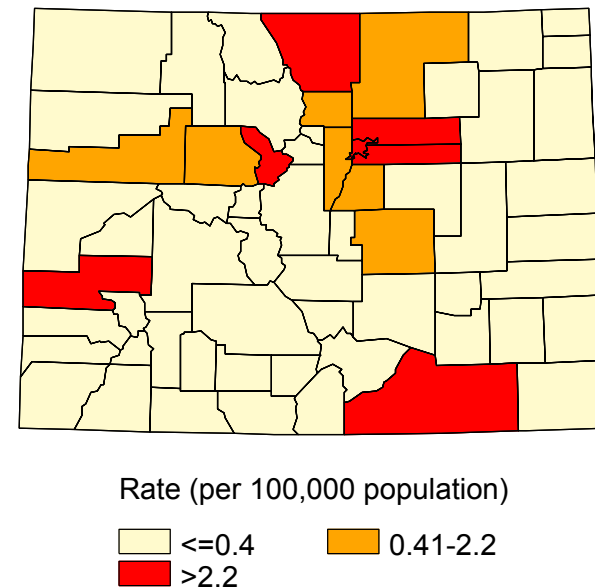
Congenital syphilis

- CASES: Colorado reported 0 cases in 2008.
- RATES: Colorado had a rate of 0.0 cases per 100,000 live births compared to the U.S. rate of 10.1 cases per 100,000.

Syphilis: P&S Rates and Congenital Cases, Colorado, 1999-2008



Total P&S Syphilis Rates by County, Colorado, 2008



Connecticut, 2008

Primary and secondary syphilis

- CASES: Connecticut reported 34 cases in 2008.
- RATES: Connecticut ranked 41 among 50 states; Washington, DC; and 3 territories with 1 case per 100,000 population compared to the U.S. rate of 4.5 cases per 100,000 population.

Rates of primary and secondary syphilis, by sex

- In Connecticut, the rate among males was 2.0 per 100,000 population compared to the U.S. male rate of 7.6 per 100,000.
- The rate among females was 0.0 per 100,000 compared to the U.S. female rate of 1.5 per 100,000.

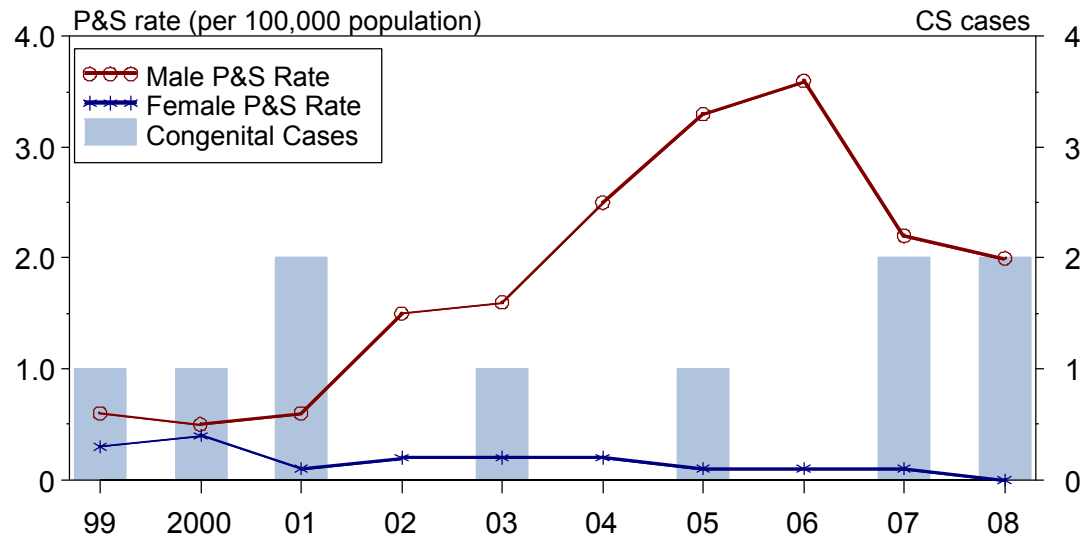
Rates of primary and secondary syphilis, by race/ethnicity

- In Connecticut, the race/ethnicity adjusted rates per 100,000 population were 0.7 among whites, 2.6 among blacks, 1.7 among Hispanics, 0.0 among Asian/Pacific Islanders, and 0.0 among American Indians/Alaska Natives.
- The rate among blacks was 3.7 times that of whites.
- The rate among Hispanics was 2.4 times that of whites.

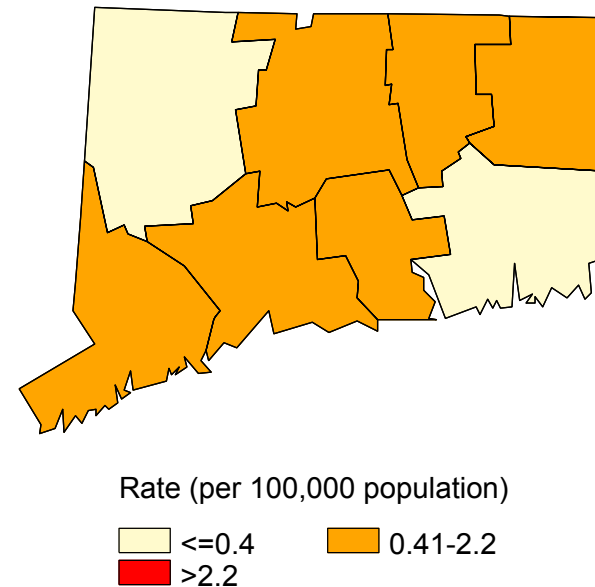
Congenital syphilis

- CASES: Connecticut reported 2 cases in 2008.
- RATES: Connecticut ranked 20 among 26 states; Washington, DC; and 1 territory reporting congenital syphilis cases with a rate of 4.8 cases per 100,000 live births compared to the U.S. rate of 10.1 cases per 100,000.

Syphilis: P&S Rates and Congenital Cases, Connecticut, 1999-2008



Total P&S Syphilis Rates by County, Connecticut, 2008



Delaware, 2008

Primary and secondary syphilis

- CASES: Delaware reported 16 cases in 2008.
- RATES: Delaware ranked 35 among 50 states; Washington, DC; and 3 territories with 1.9 cases per 100,000 population compared to the U.S. rate of 4.5 cases per 100,000 population.

Rates of primary and secondary syphilis, by sex

- In Delaware, the rate among males was 2.4 per 100,000 population compared to the U.S. male rate of 7.6 per 100,000.
- The rate among females was 1.3 per 100,000 compared to the U.S. female rate of 1.5 per 100,000.

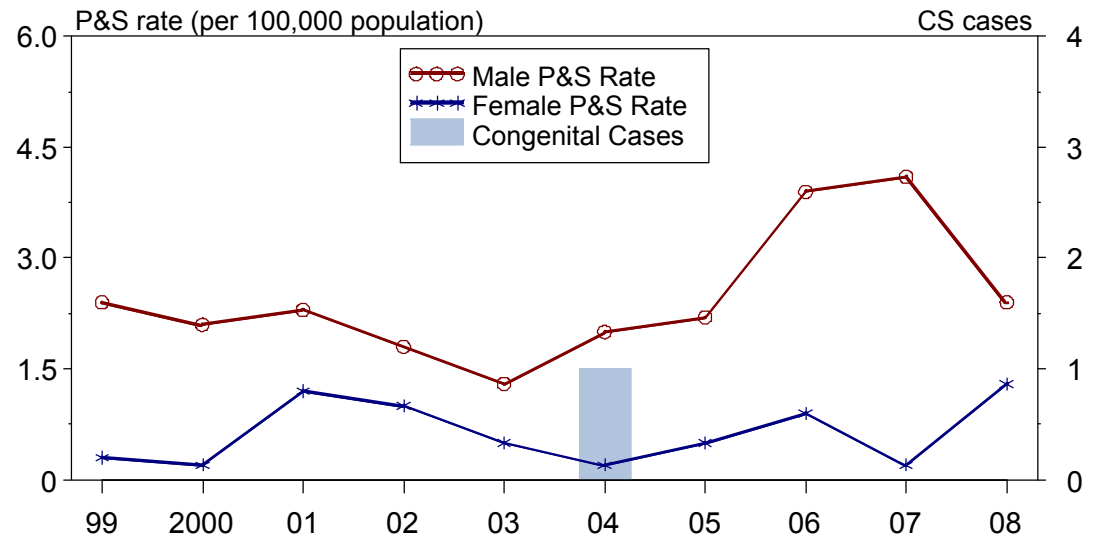
Rates of primary and secondary syphilis, by race/ethnicity

- In Delaware, the race/ethnicity adjusted rates per 100,000 population were 0.3 among whites, 7.2 among blacks, 1.8 among Hispanics, 0.0 among Asian/Pacific Islanders, and 0.0 among American Indians/Alaska Natives.
- The rate among blacks was 24 times that of whites.
- The rate among Hispanics was 6 times that of whites.

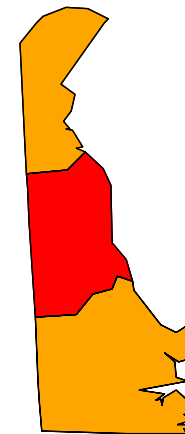
Congenital syphilis

- CASES: Delaware reported 0 cases in 2008.
- RATES: Delaware had a rate of 0.0 cases per 100,000 live births compared to the U.S. rate of 10.1 cases per 100,000.

Syphilis: P&S Rates and Congenital Cases, Delaware, 1999-2008



Total P&S Syphilis Rates by County, Delaware, 2008



Rate (per 100,000 population)



Florida, 2008

Primary and secondary syphilis

- CASES: Florida reported 1,044 cases in 2008.
- RATES: Florida ranked 12 among 50 states; Washington, DC; and 3 territories with 5.7 cases per 100,000 population compared to the U.S. rate of 4.5 cases per 100,000 population.

Rates of primary and secondary syphilis, by sex

- In Florida, the rate among males was 9.5 per 100,000 population compared to the U.S. male rate of 7.6 per 100,000.
- The rate among females was 2.1 per 100,000 compared to the U.S. female rate of 1.5 per 100,000.

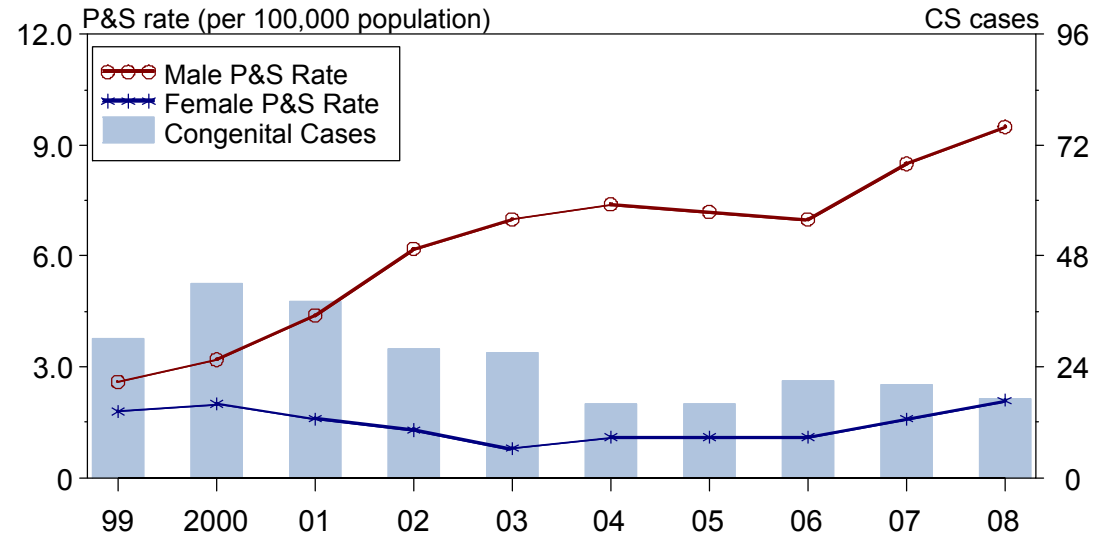
Rates of primary and secondary syphilis, by race/ethnicity

- In Florida, the race/ethnicity adjusted rates per 100,000 population were 3.1 among whites, 18.2 among blacks, 5.1 among Hispanics, 0.5 among Asian/Pacific Islanders, and 1.7 among American Indians/Alaska Natives.
- The rate among blacks was 5.9 times that of whites.
- The rate among Hispanics was 1.6 times that of whites.

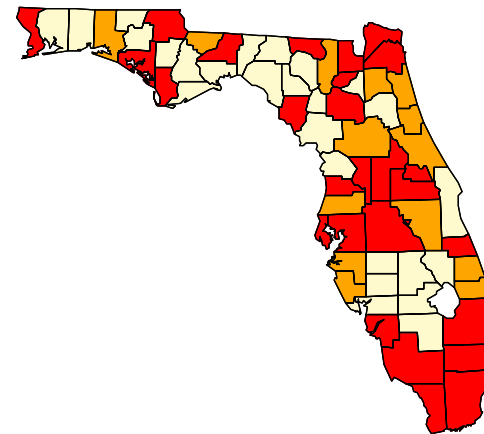
Congenital syphilis

- CASES: Florida reported 17 cases in 2008.
- RATES: Florida ranked 17 among 26 states; Washington, DC; and 1 territory reporting congenital syphilis cases with a rate of 7.2 cases per 100,000 live births compared to the U.S. rate of 10.1 cases per 100,000.

Syphilis: P&S Rates and Congenital Cases, Florida, 1999-2008



Total P&S Syphilis Rates by County, Florida, 2008



Rate (per 100,000 population)



Georgia, 2008

Primary and secondary syphilis

- CASES: Georgia reported 914 cases in 2008.
- RATES: Georgia ranked 4 among 50 states; Washington, DC; and 3 territories with 9.6 cases per 100,000 population compared to the U.S. rate of 4.5 cases per 100,000 population.

Rates of primary and secondary syphilis, by sex

- In Georgia, the rate among males was 17.4 per 100,000 population compared to the U.S. male rate of 7.6 per 100,000.
- The rate among females was 2.0 per 100,000 compared to the U.S. female rate of 1.5 per 100,000.

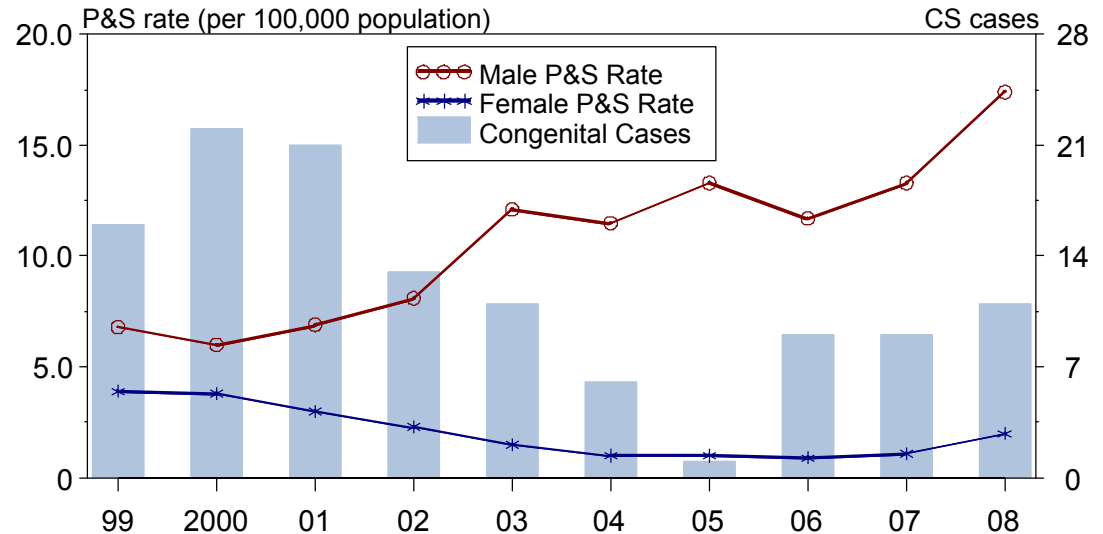
Rates of primary and secondary syphilis, by race/ethnicity

- In Georgia, the race/ethnicity adjusted rates per 100,000 population were 3.1 among whites, 24.6 among blacks, 4.0 among Hispanics, 1.8 among Asian/Pacific Islanders, and 0.0 among American Indians/Alaska Natives.
- The rate among blacks was 7.9 times that of whites.
- The rate among Hispanics was 1.3 times that of whites.

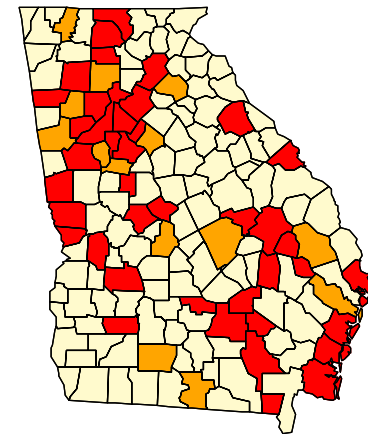
Congenital syphilis

- CASES: Georgia reported 11 cases in 2008.
- RATES: Georgia ranked 16 among 26 states; Washington, DC; and 1 territory reporting congenital syphilis cases with a rate of 7.4 cases per 100,000 live births compared to the U.S. rate of 10.1 cases per 100,000.

Syphilis: P&S Rates and Congenital Cases, Georgia, 1999-2008



Total P&S Syphilis Rates by County, Georgia, 2008



Rate (per 100,000 population)



Guam, 2008

Primary and secondary syphilis

- CASES: Guam reported 6 cases in 2008.
- RATES: Guam ranked 17 among 50 states; Washington, DC; and 3 territories with 3.5 cases per 100,000 population compared to the U.S. rate of 4.5 cases per 100,000 population.

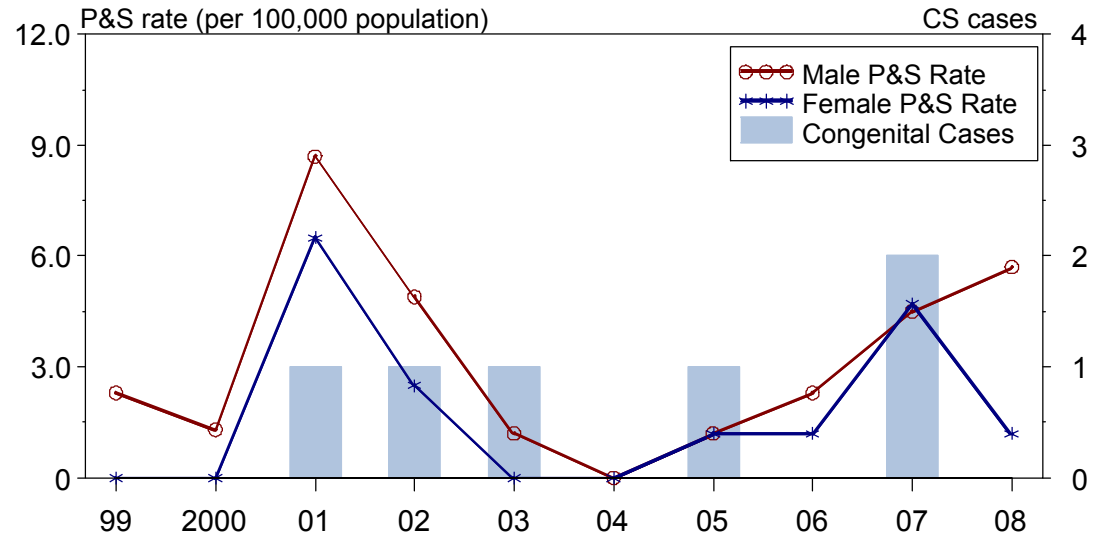
Rates of primary and secondary syphilis, by sex

- In Guam, the rate among males was 5.7 per 100,000 population compared to the U.S. male rate of 7.6 per 100,000.
- The rate among females was 1.2 per 100,000 compared to the U.S. female rate of 1.5 per 100,000.

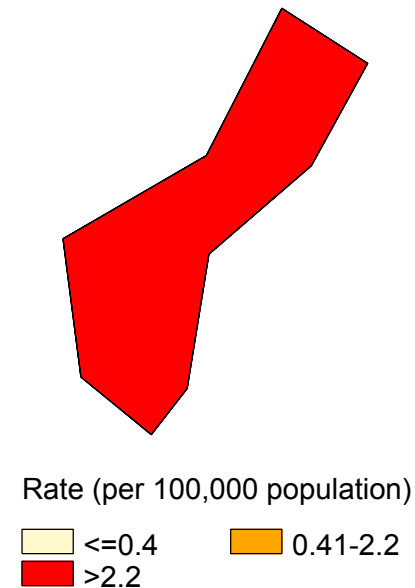
Congenital syphilis

- CASES: Guam reported 0 cases in 2008.
- RATES: Guam had a rate of 0.0 cases per 100,000 live births compared to the U.S. rate of 10.1 cases per 100,000.

Syphilis: P&S Rates and Congenital Cases, Guam, 1999-2008



Total P&S Syphilis Rate, Guam, 2008



Hawaii, 2008

Primary and secondary syphilis

- CASES: Hawaii reported 29 cases in 2008.
- RATES: Hawaii ranked 27 among 50 states; Washington, DC; and 3 territories with 2.3 cases per 100,000 population compared to the U.S. rate of 4.5 cases per 100,000 population.

Rates of primary and secondary syphilis, by sex

- In Hawaii, the rate among males was 3.4 per 100,000 population compared to the U.S. male rate of 7.6 per 100,000.
- The rate among females was 1.1 per 100,000 compared to the U.S. female rate of 1.5 per 100,000.

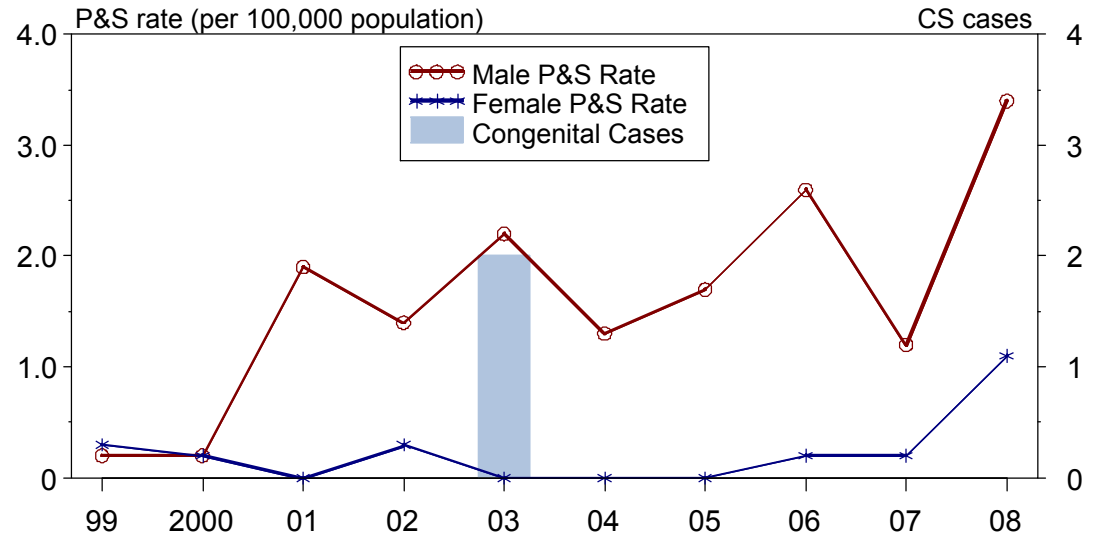
Rates of primary and secondary syphilis, by race/ethnicity

- In Hawaii, the race/ethnicity adjusted rates per 100,000 population were 3.1 among whites, 2.4 among blacks, 5.7 among Hispanics, 1.4 among Asian/Pacific Islanders, and 0.0 among American Indians/Alaska Natives.
- The rate among Hispanics was 1.8 times that of whites.

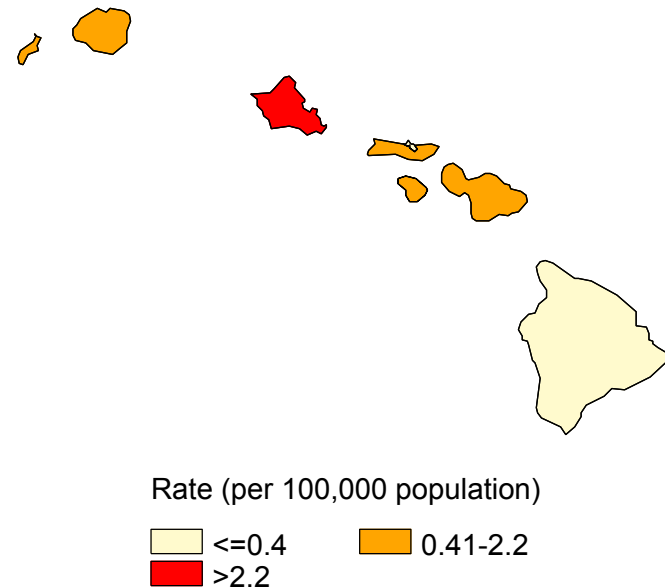
Congenital syphilis

- CASES: Hawaii reported 0 cases in 2008.
- RATES: Hawaii had a rate of 0.0 cases per 100,000 live births compared to the U.S. rate of 10.1 cases per 100,000.

Syphilis: P&S Rates and Congenital Cases, Hawaii, 1999-2008



Total P&S Syphilis Rates by County, Hawaii, 2008



Idaho, 2008

Primary and secondary syphilis

- CASES: Idaho reported 7 cases in 2008.
- RATES: Idaho ranked 49 among 50 states; Washington, DC; and 3 territories with 0.5 cases per 100,000 population compared to the U.S. rate of 4.5 cases per 100,000 population.

Rates of primary and secondary syphilis, by sex

- In Idaho, the rate among males was 0.8 per 100,000 population compared to the U.S. male rate of 7.6 per 100,000.
- The rate among females was 0.1 per 100,000 compared to the U.S. female rate of 1.5 per 100,000.

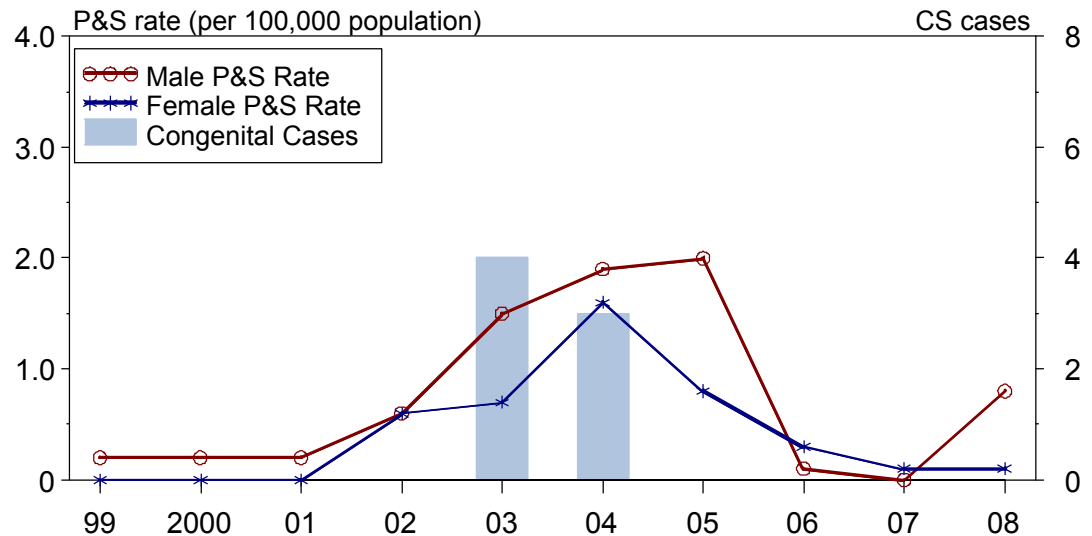
Rates of primary and secondary syphilis, by race/ethnicity

- In Idaho, the race/ethnicity adjusted rates per 100,000 population were 0.3 among whites, 0.0 among blacks, 2.0 among Hispanics, 0.0 among Asian/Pacific Islanders, and 0.0 among American Indians/Alaska Natives.
- The rate among Hispanics was 6.7 times that of whites.

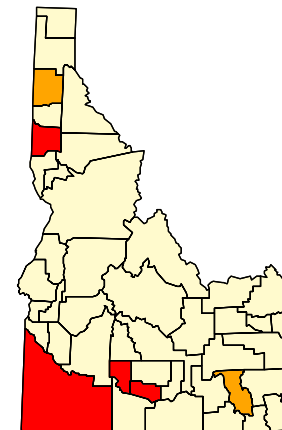
Congenital syphilis

- CASES: Idaho reported 0 cases in 2008.
- RATES: Idaho had a rate of 0.0 cases per 100,000 live births compared to the U.S. rate of 10.1 cases per 100,000.

Syphilis: P&S Rates and Congenital Cases, Idaho, 1999-2008



Total P&S Syphilis Rates by County, Idaho, 2008



Rate (per 100,000 population)



Illinois, 2008

Primary and secondary syphilis

- CASES: Illinois reported 554 cases in 2008.
- RATES: Illinois ranked 14 among 50 states; Washington, DC; and 3 territories with 4.3 cases per 100,000 population compared to the U.S. rate of 4.5 cases per 100,000 population.

Rates of primary and secondary syphilis, by sex

- In Illinois, the rate among males was 8.1 per 100,000 population compared to the U.S. male rate of 7.6 per 100,000.
- The rate among females was 0.6 per 100,000 compared to the U.S. female rate of 1.5 per 100,000.

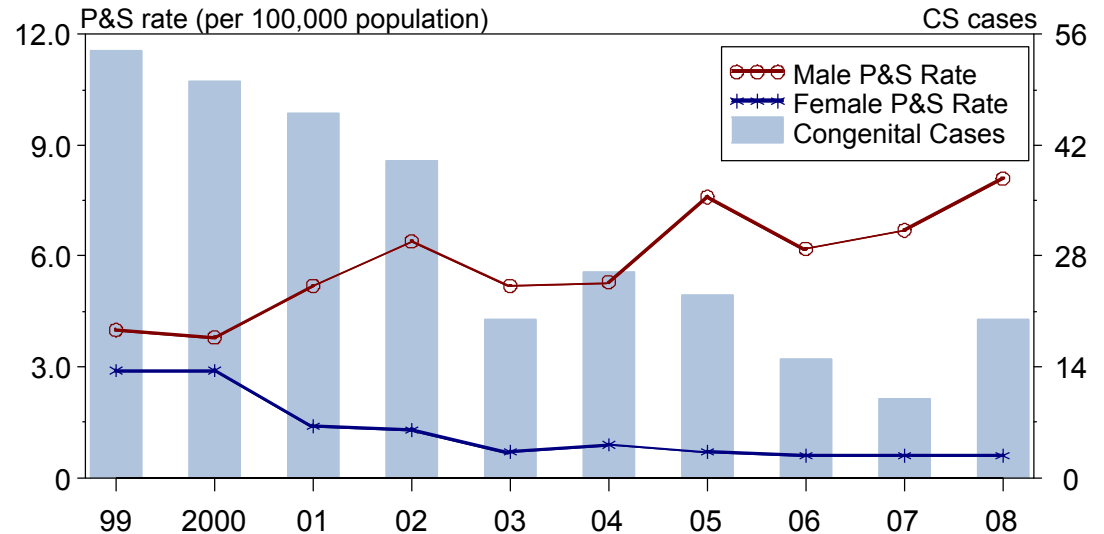
Rates of primary and secondary syphilis, by race/ethnicity

- In Illinois, the race/ethnicity adjusted rates per 100,000 population were 2.0 among whites, 13.7 among blacks, 5.8 among Hispanics, 1.1 among Asian/Pacific Islanders, and 0.0 among American Indians/Alaska Natives.
- The rate among blacks was 6.9 times that of whites.
- The rate among Hispanics was 2.9 times that of whites.

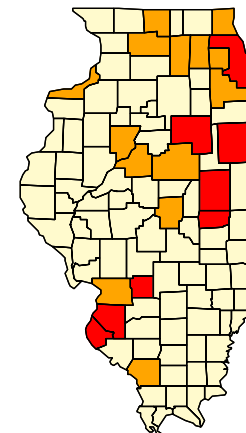
Congenital syphilis

- CASES: Illinois reported 20 cases in 2008.
- RATES: Illinois ranked 11 among 26 states; Washington, DC; and 1 territory reporting congenital syphilis cases with a rate of 11.1 cases per 100,000 live births compared to the U.S. rate of 10.1 cases per 100,000.

Syphilis: P&S Rates and Congenital Cases, Illinois, 1999-2008



Total P&S Syphilis Rates by County, Illinois, 2008



Rate (per 100,000 population)



Indiana, 2008

Primary and secondary syphilis

- CASES: Indiana reported 140 cases in 2008.
- RATES: Indiana ranked 28 among 50 states; Washington, DC; and 3 territories with 2.2 cases per 100,000 population compared to the U.S. rate of 4.5 cases per 100,000 population.

Rates of primary and secondary syphilis, by sex

- In Indiana, the rate among males was 4.0 per 100,000 population compared to the U.S. male rate of 7.6 per 100,000.
- The rate among females was 0.5 per 100,000 compared to the U.S. female rate of 1.5 per 100,000.

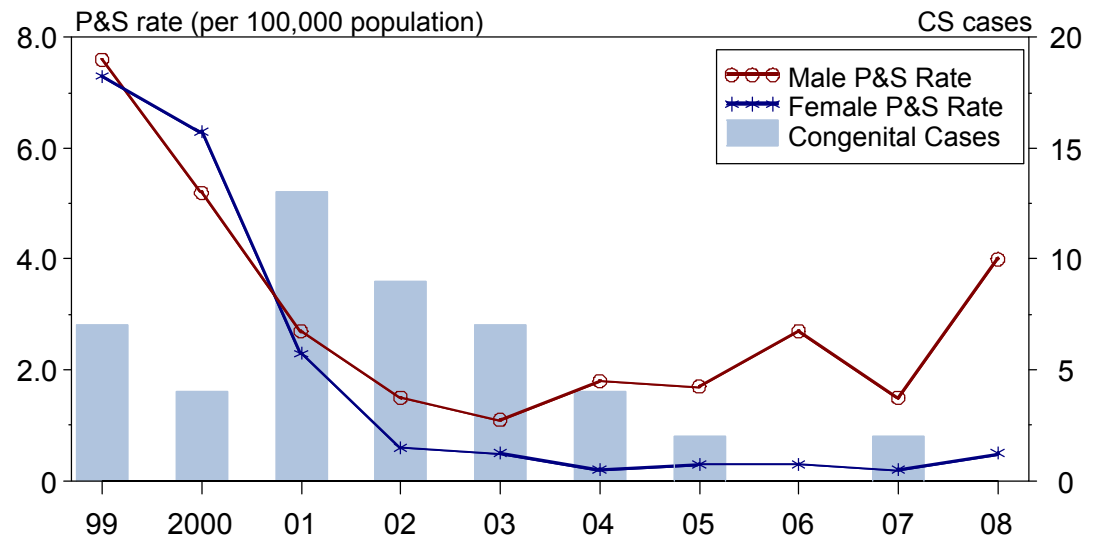
Rates of primary and secondary syphilis, by race/ethnicity

- In Indiana, the race/ethnicity adjusted rates per 100,000 population were 1.6 among whites, 8.0 among blacks, 1.3 among Hispanics, 1.1 among Asian/Pacific Islanders, and 0.0 among American Indians/Alaska Natives.
- The rate among blacks was 5 times that of whites.

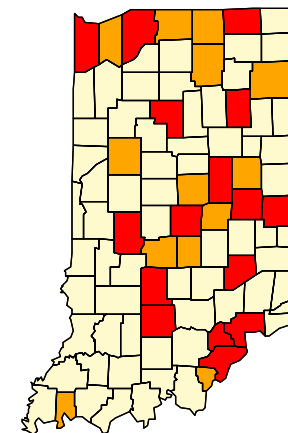
Congenital syphilis

- CASES: Indiana reported 0 cases in 2008.
- RATES: Indiana had a rate of 0.0 cases per 100,000 live births compared to the U.S. rate of 10.1 cases per 100,000.

Syphilis: P&S Rates and Congenital Cases, Indiana, 1999-2008



Total P&S Syphilis Rates by County, Indiana, 2008



Rate (per 100,000 population)



Iowa, 2008

Primary and secondary syphilis

- CASES: Iowa reported 16 cases in 2008.
- RATES: Iowa ranked 49 among 50 states; Washington, DC; and 3 territories with 0.5 cases per 100,000 population compared to the U.S. rate of 4.5 cases per 100,000 population.

Rates of primary and secondary syphilis, by sex

- In Iowa, the rate among males was 0.9 per 100,000 population compared to the U.S. male rate of 7.6 per 100,000.
- The rate among females was 0.2 per 100,000 compared to the U.S. female rate of 1.5 per 100,000.

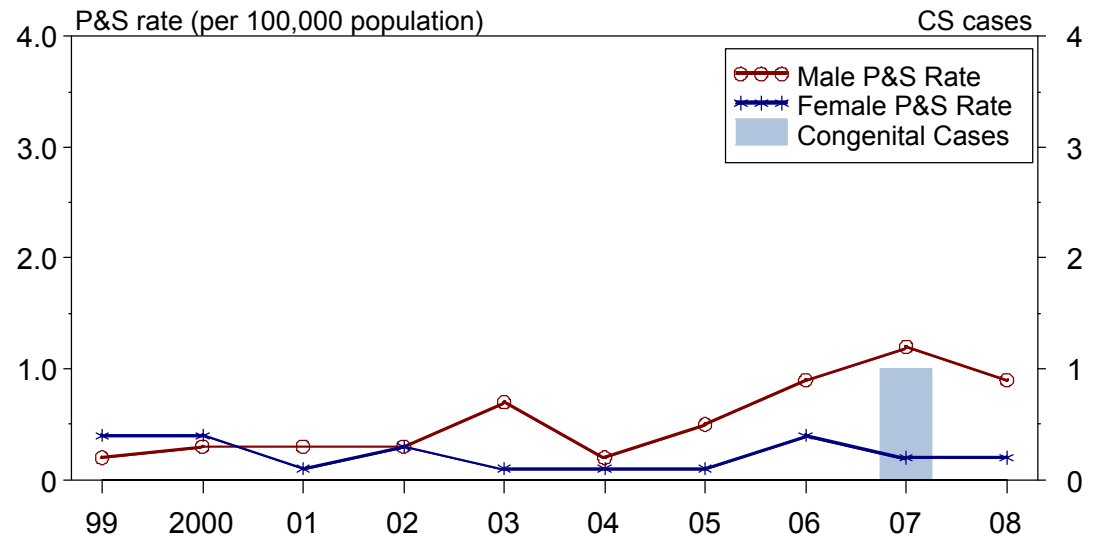
Rates of primary and secondary syphilis, by race/ethnicity

- In Iowa, the race/ethnicity adjusted rates per 100,000 population were 0.5 among whites, 3.5 among blacks, 0.0 among Hispanics, 0.0 among Asian/Pacific Islanders, and 0.0 among American Indians/Alaska Natives.
- The rate among blacks was 7 times that of whites.

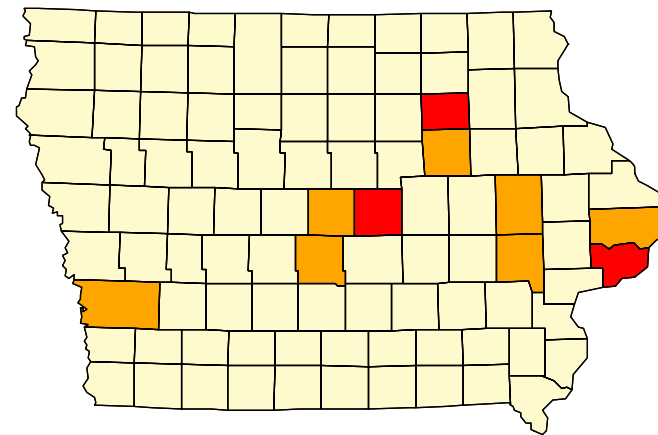
Congenital syphilis

- CASES: Iowa reported 0 cases in 2008.
- RATES: Iowa had a rate of 0.0 cases per 100,000 live births compared to the U.S. rate of 10.1 cases per 100,000.

Syphilis: P&S Rates and Congenital Cases, Iowa, 1999-2008



Total P&S Syphilis Rates by County, Iowa, 2008



Rate (per 100,000 population)



Kansas, 2008

Primary and secondary syphilis

- CASES: Kansas reported 30 cases in 2008.
- RATES: Kansas ranked 40 among 50 states; Washington, DC; and 3 territories with 1.1 cases per 100,000 population compared to the U.S. rate of 4.5 cases per 100,000 population.

Rates of primary and secondary syphilis, by sex

- In Kansas, the rate among males was 1.8 per 100,000 population compared to the U.S. male rate of 7.6 per 100,000.
- The rate among females was 0.4 per 100,000 compared to the U.S. female rate of 1.5 per 100,000.

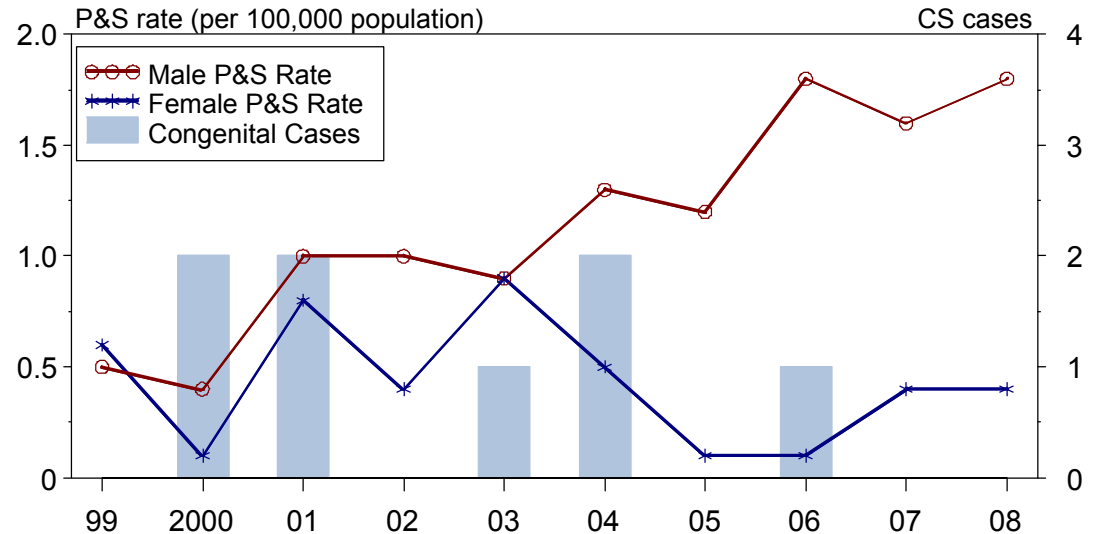
Rates of primary and secondary syphilis, by race/ethnicity

- In Kansas, the race/ethnicity adjusted rates per 100,000 population were 0.6 among whites, 8.0 among blacks, 0.4 among Hispanics, 0.0 among Asian/Pacific Islanders, and 3.7 among American Indians/Alaska Natives.
- The rate among blacks was 13.3 times that of whites.
- The rate among American Indians/Alaska Natives was 6.2 times that of whites.

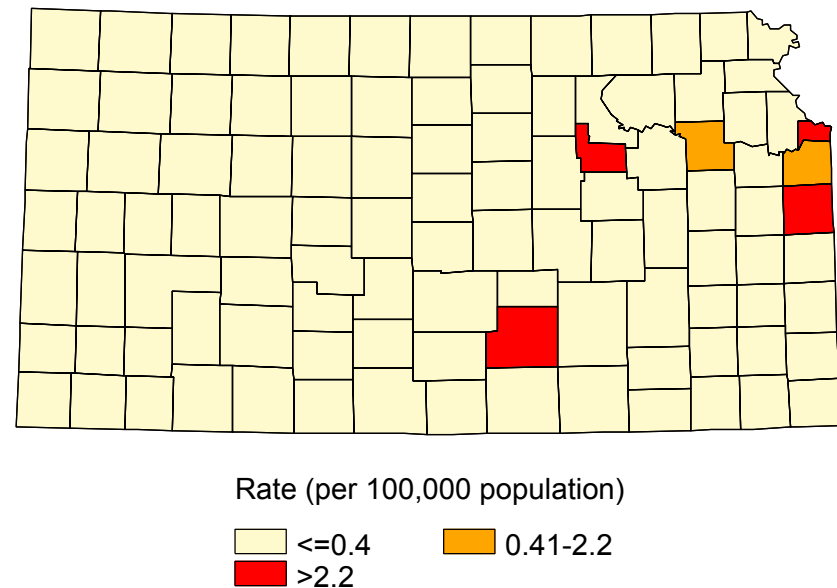
Congenital syphilis

- CASES: Kansas reported 0 cases in 2008.
- RATES: Kansas had a rate of 0.0 cases per 100,000 live births compared to the U.S. rate of 10.1 cases per 100,000.

Syphilis: P&S Rates and Congenital Cases, Kansas, 1999-2008



Total P&S Syphilis Rates by County, Kansas, 2008



Kentucky, 2008

Primary and secondary syphilis

- CASES: Kentucky reported 93 cases in 2008.
- RATES: Kentucky ranked 28 among 50 states; Washington, DC; and 3 territories with 2.2 cases per 100,000 population compared to the U.S. rate of 4.5 cases per 100,000 population.

Rates of primary and secondary syphilis, by sex

- In Kentucky, the rate among males was 3.8 per 100,000 population compared to the U.S. male rate of 7.6 per 100,000.
- The rate among females was 0.6 per 100,000 compared to the U.S. female rate of 1.5 per 100,000.

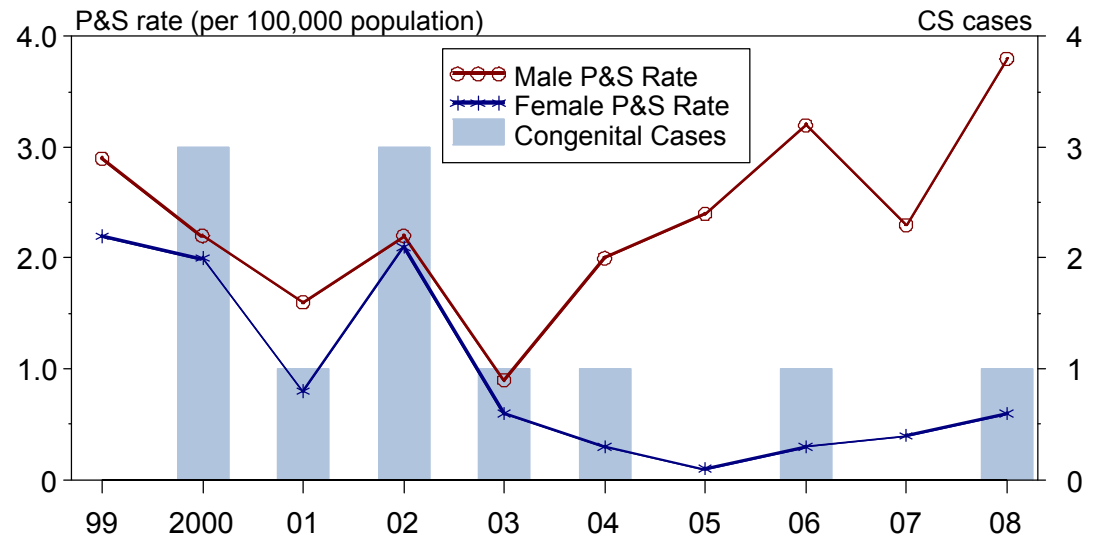
Rates of primary and secondary syphilis, by race/ethnicity

- In Kentucky, the race/ethnicity adjusted rates per 100,000 population were 1.5 among whites, 8.7 among blacks, 5.3 among Hispanics, 0.0 among Asian/Pacific Islanders, and 0.0 among American Indians/Alaska Natives.
- The rate among blacks was 5.8 times that of whites.
- The rate among Hispanics was 3.5 times that of whites.

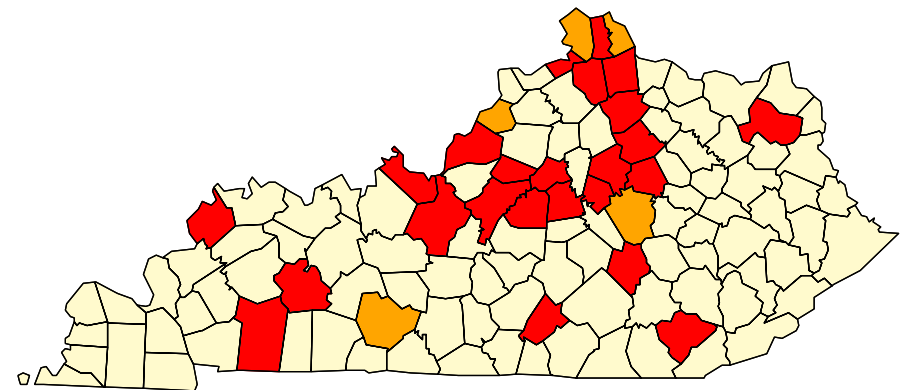
Congenital syphilis

- CASES: Kentucky reported 1 case in 2008.
- RATES: Kentucky ranked 28 among 26 states; Washington, DC; and 1 territory reporting congenital syphilis cases with a rate of 1.7 cases per 100,000 live births compared to the U.S. rate of 10.1 cases per 100,000.

Syphilis: P&S Rates and Congenital Cases, Kentucky, 1999-2008



Total P&S Syphilis Rates by County, Kentucky, 2008



Rate (per 100,000 population)



Louisiana, 2008

Primary and secondary syphilis

- CASES: Louisiana reported 707 cases in 2008.
- RATES: Louisiana ranked 2 among 50 states; Washington, DC; and 3 territories with 16.5 cases per 100,000 population compared to the U.S. rate of 4.5 cases per 100,000 population.

Rates of primary and secondary syphilis, by sex

- In Louisiana, the rate among males was 19.2 per 100,000 population compared to the U.S. male rate of 7.6 per 100,000.
- The rate among females was 13.9 per 100,000 compared to the U.S. female rate of 1.5 per 100,000.

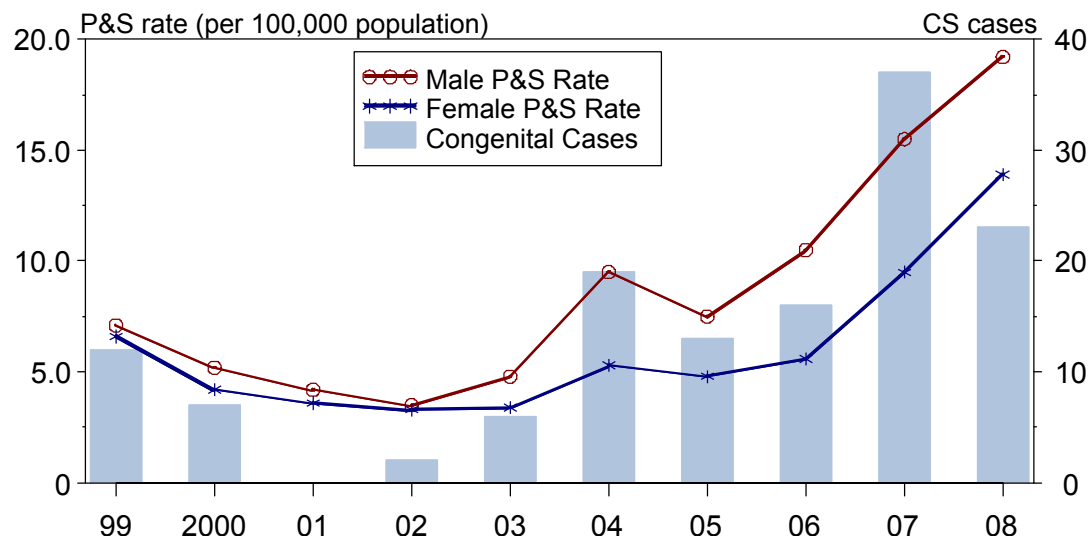
Rates of primary and secondary syphilis, by race/ethnicity

- In Louisiana, the race/ethnicity adjusted rates per 100,000 population were 3.3 among whites, 45.0 among blacks, 0.0 among Hispanics, 0.0 among Asian/Pacific Islanders, and 0.0 among American Indians/Alaska Natives.
- The rate among blacks was 13.6 times that of whites.

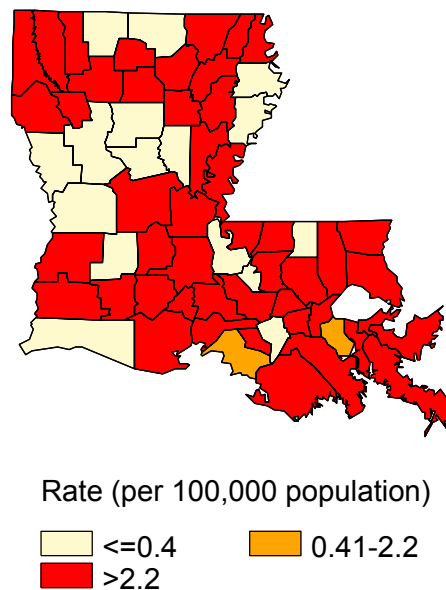
Congenital syphilis

- CASES: Louisiana reported 23 cases in 2008.
- RATES: Louisiana ranked 1 among 26 states; Washington, DC; and 1 territory reporting congenital syphilis cases with a rate of 36.3 cases per 100,000 live births compared to the U.S. rate of 10.1 cases per 100,000.

Syphilis: P&S Rates and Congenital Cases, Louisiana, 1999-2008



Total P&S Syphilis Rates by County, Louisiana, 2008



Maine, 2008

Primary and secondary syphilis

- CASES: Maine reported 10 cases in 2008.
- RATES: Maine ranked 43 among 50 states; Washington, DC; and 3 territories with 0.8 cases per 100,000 population compared to the U.S. rate of 4.5 cases per 100,000 population.

Rates of primary and secondary syphilis, by sex

- In Maine, the rate among males was 1.6 per 100,000 population compared to the U.S. male rate of 7.6 per 100,000.
- The rate among females was 0.0 per 100,000 compared to the U.S. female rate of 1.5 per 100,000.

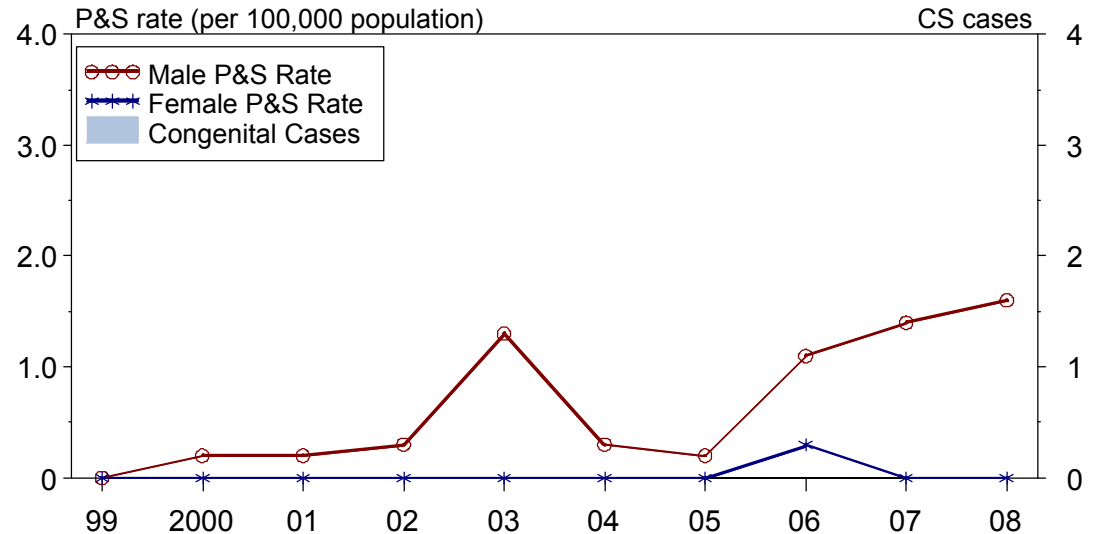
Rates of primary and secondary syphilis, by race/ethnicity

- In Maine, the race/ethnicity adjusted rates per 100,000 population were 0.8 among whites, 0.0 among blacks, 0.0 among Hispanics, 0.0 among Asian/Pacific Islanders, and 0.0 among American Indians/Alaska Natives.

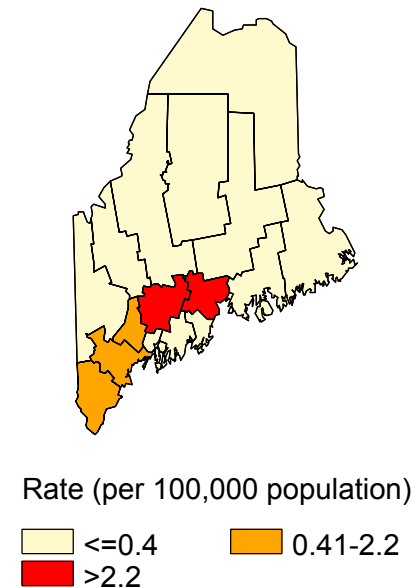
Congenital syphilis

- CASES: Maine reported 0 cases in 2008.
- RATES: Maine had a rate of 0.0 cases per 100,000 live births compared to the U.S. rate of 10.1 cases per 100,000.

Syphilis: P&S Rates and Congenital Cases, Maine, 1999-2008



Total P&S Syphilis Rates by County, Maine, 2008



Maryland, 2008

Primary and secondary syphilis

- CASES: Maryland reported 378 cases in 2008.
- RATES: Maryland ranked 6 among 50 states; Washington, DC; and 3 territories with 6.7 cases per 100,000 population compared to the U.S. rate of 4.5 cases per 100,000 population.

Rates of primary and secondary syphilis, by sex

- In Maryland, the rate among males was 11.1 per 100,000 population compared to the U.S. male rate of 7.6 per 100,000.
- The rate among females was 2.7 per 100,000 compared to the U.S. female rate of 1.5 per 100,000.

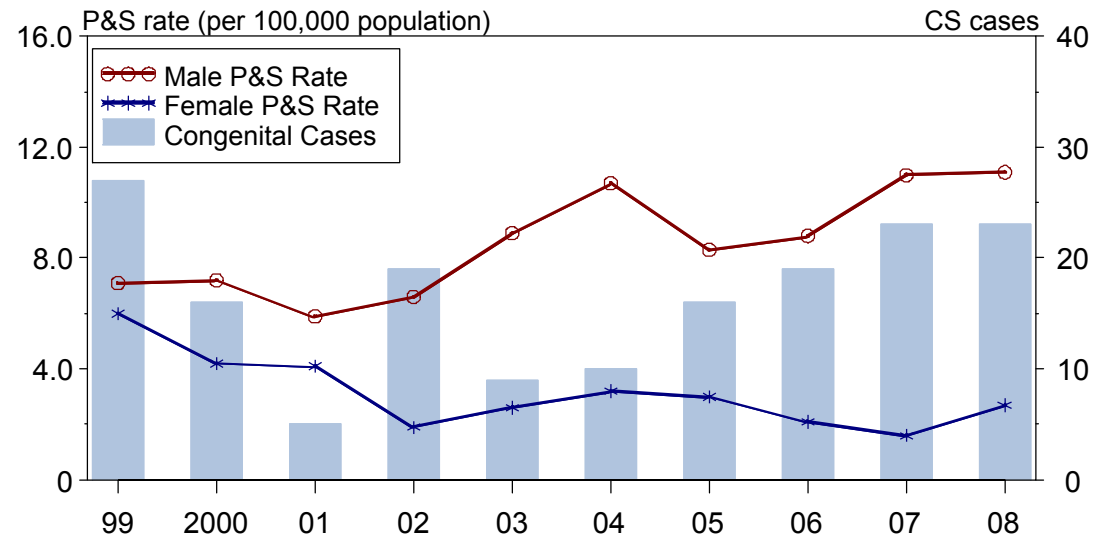
Rates of primary and secondary syphilis, by race/ethnicity

- In Maryland, the race/ethnicity adjusted rates per 100,000 population were 2.3 among whites, 17.1 among blacks, 2.8 among Hispanics, 3.1 among Asian/Pacific Islanders, and 5.9 among American Indians/Alaska Natives.
- The rate among blacks was 7.4 times that of whites.
- The rate among Hispanics was 1.2 times that of whites.
- The rate among Asian/Pacific Islanders was 1.3 times that of whites.
- The rate among American Indians/Alaska Natives was 2.6 times that of whites.

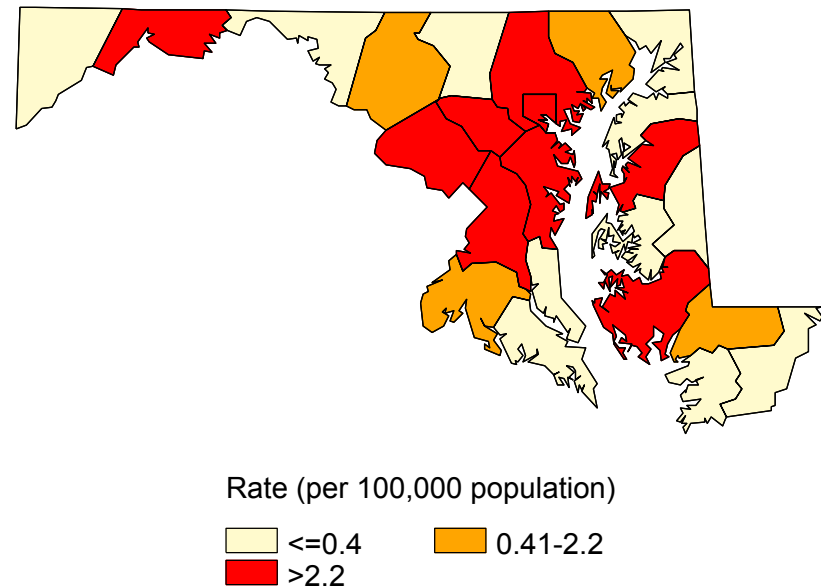
Congenital syphilis

- CASES: Maryland reported 23 cases in 2008.
- RATES: Maryland ranked 3 among 26 states; Washington, DC; and 1 territory reporting congenital syphilis cases with a rate of 29.7 cases per 100,000 live births compared to the U.S. rate of 10.1 cases per 100,000.

Syphilis: P&S Rates and Congenital Cases, Maryland, 1999-2008



Total P&S Syphilis Rates by County, Maryland, 2008



Massachusetts, 2008

Primary and secondary syphilis

- CASES: Massachusetts reported 216 cases in 2008.
- RATES: Massachusetts ranked 19 among 50 states; Washington, DC; and 3 territories with 3.3 cases per 100,000 population compared to the U.S. rate of 4.5 cases per 100,000 population.

Rates of primary and secondary syphilis, by sex

- In Massachusetts, the rate among males was 6.7 per 100,000 population compared to the U.S. male rate of 7.6 per 100,000.
- The rate among females was 0.2 per 100,000 compared to the U.S. female rate of 1.5 per 100,000.

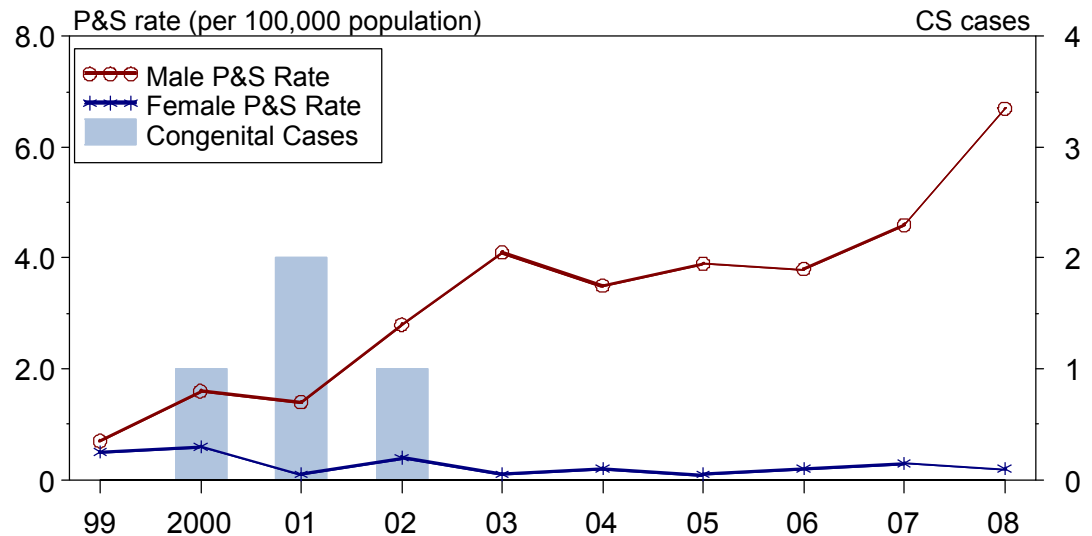
Rates of primary and secondary syphilis, by race/ethnicity

- In Massachusetts, the race/ethnicity adjusted rates per 100,000 population were 2.6 among whites, 8.7 among blacks, 8.0 among Hispanics, 0.9 among Asian/Pacific Islanders, and 6.5 among American Indians/Alaska Natives.
- The rate among blacks was 3.3 times that of whites.
- The rate among Hispanics was 3.1 times that of whites.
- The rate among American Indians/Alaska Natives was 2.5 times that of whites.

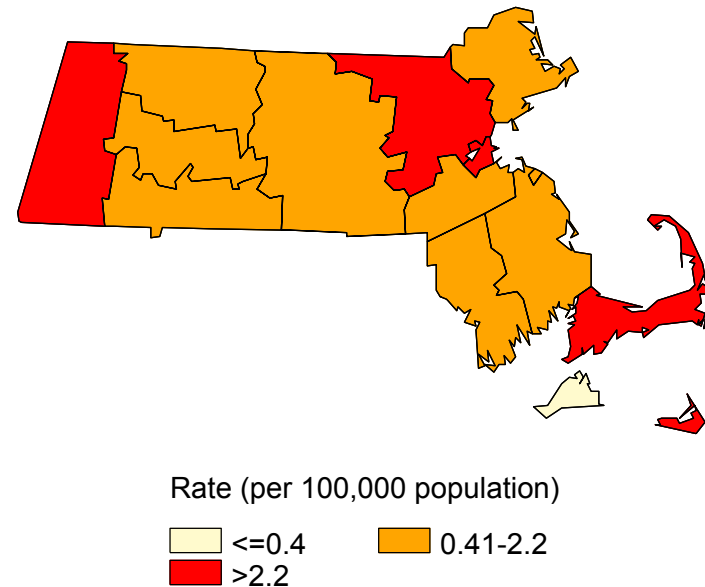
Congenital syphilis

- CASES: Massachusetts reported 0 cases in 2008.
- RATES: Massachusetts had a rate of 0.0 cases per 100,000 live births compared to the U.S. rate of 10.1 cases per 100,000.

Syphilis: P&S Rates and Congenital Cases, Massachusetts, 1999-2008



Total P&S Syphilis Rates by County, Massachusetts, 2008



Michigan, 2008

Primary and secondary syphilis

- CASES: Michigan reported 210 cases in 2008.
- RATES: Michigan ranked 34 among 50 states; Washington, DC; and 3 territories with 2.1 cases per 100,000 population compared to the U.S. rate of 4.5 cases per 100,000 population.

Rates of primary and secondary syphilis, by sex

- In Michigan, the rate among males was 3.0 per 100,000 population compared to the U.S. male rate of 7.6 per 100,000.
- The rate among females was 1.2 per 100,000 compared to the U.S. female rate of 1.5 per 100,000.

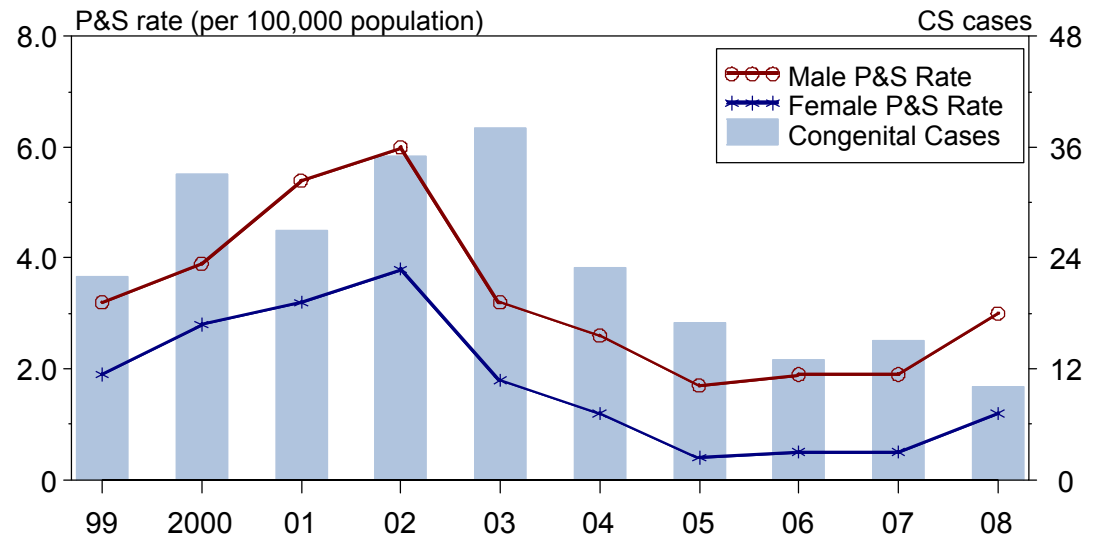
Rates of primary and secondary syphilis, by race/ethnicity

- In Michigan, the race/ethnicity adjusted rates per 100,000 population were 0.6 among whites, 11.0 among blacks, 0.7 among Hispanics, 0.0 among Asian/Pacific Islanders, and 0.0 among American Indians/Alaska Natives.
- The rate among blacks was 18.3 times that of whites.
- The rate among Hispanics was 1.2 times that of whites.

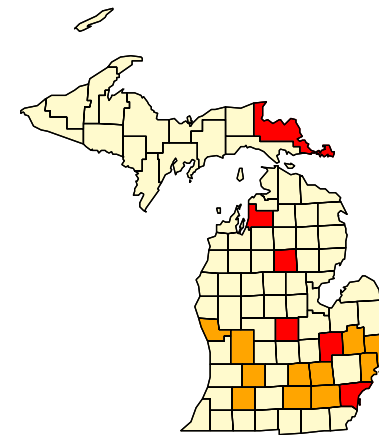
Congenital syphilis

- CASES: Michigan reported 10 cases in 2008.
- RATES: Michigan ranked 14 among 26 states; Washington, DC; and 1 territory reporting congenital syphilis cases with a rate of 7.8 cases per 100,000 live births compared to the U.S. rate of 10.1 cases per 100,000.

Syphilis: P&S Rates and Congenital Cases, Michigan, 1999-2008



Total P&S Syphilis Rates by County, Michigan, 2008



Rate (per 100,000 population)



Minnesota, 2008

Primary and secondary syphilis

- CASES: Minnesota reported 116 cases in 2008.
- RATES: Minnesota ranked 28 among 50 states; Washington, DC; and 3 territories with 2.2 cases per 100,000 population compared to the U.S. rate of 4.5 cases per 100,000 population.

Rates of primary and secondary syphilis, by sex

- In Minnesota, the rate among males was 4.3 per 100,000 population compared to the U.S. male rate of 7.6 per 100,000.
- The rate among females was 0.2 per 100,000 compared to the U.S. female rate of 1.5 per 100,000.

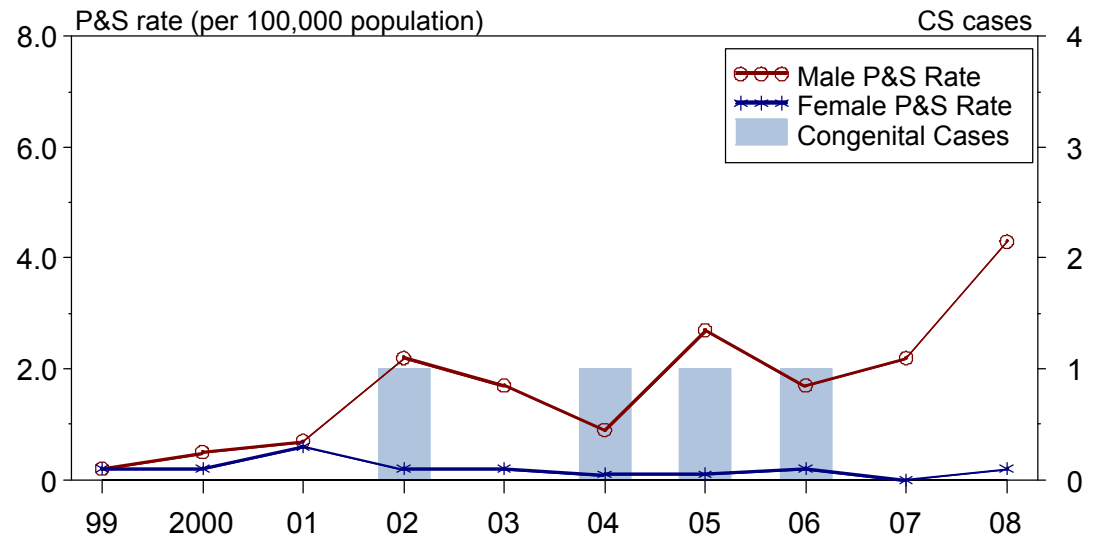
Rates of primary and secondary syphilis, by race/ethnicity

- In Minnesota, the race/ethnicity adjusted rates per 100,000 population were 2.0 among whites, 8.1 among blacks, 1.5 among Hispanics, 0.5 among Asian/Pacific Islanders, and 0.0 among American Indians/Alaska Natives.
- The rate among blacks was 4.1 times that of whites.

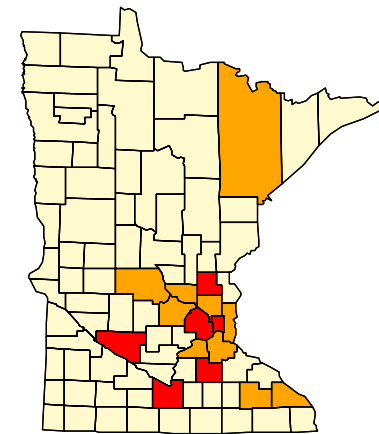
Congenital syphilis

- CASES: Minnesota reported 0 cases in 2008.
- RATES: Minnesota had a rate of 0.0 cases per 100,000 live births compared to the U.S. rate of 10.1 cases per 100,000.

Syphilis: P&S Rates and Congenital Cases, Minnesota, 1999-2008



Total P&S Syphilis Rates by County, Minnesota, 2008



Rate (per 100,000 population)



Mississippi, 2008

Primary and secondary syphilis

- CASES: Mississippi reported 184 cases in 2008.
- RATES: Mississippi ranked 8 among 50 states; Washington, DC; and 3 territories with 6.3 cases per 100,000 population compared to the U.S. rate of 4.5 cases per 100,000 population.

Rates of primary and secondary syphilis, by sex

- In Mississippi, the rate among males was 8.3 per 100,000 population compared to the U.S. male rate of 7.6 per 100,000.
- The rate among females was 4.4 per 100,000 compared to the U.S. female rate of 1.5 per 100,000.

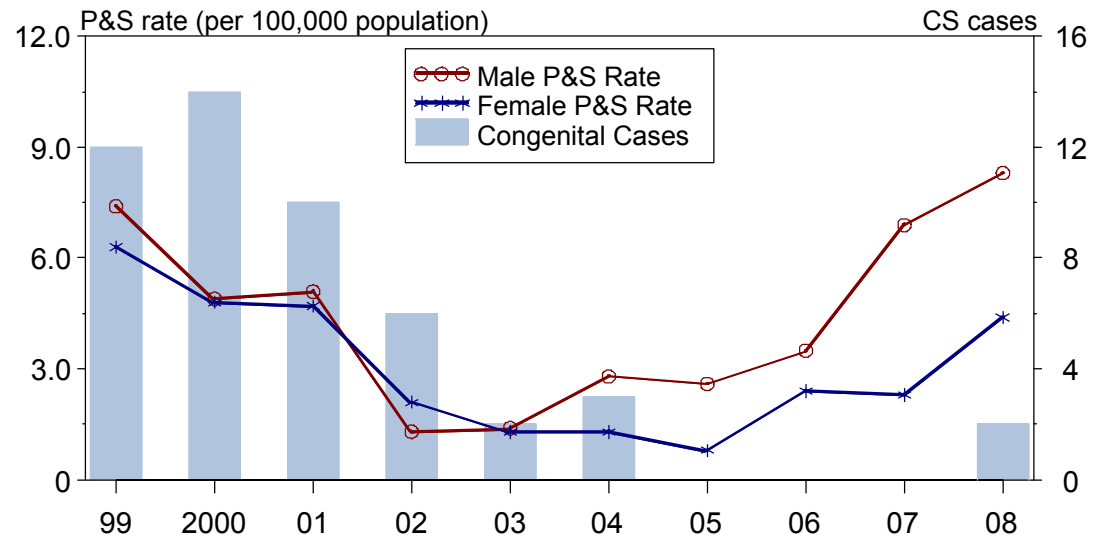
Rates of primary and secondary syphilis, by race/ethnicity

- In Mississippi, the race/ethnicity adjusted rates per 100,000 population were 2.0 among whites, 13.2 among blacks, 8.3 among Hispanics, 0.0 among Asian/Pacific Islanders, and 0.0 among American Indians/Alaska Natives.
- The rate among blacks was 6.6 times that of whites.
- The rate among Hispanics was 4.2 times that of whites.

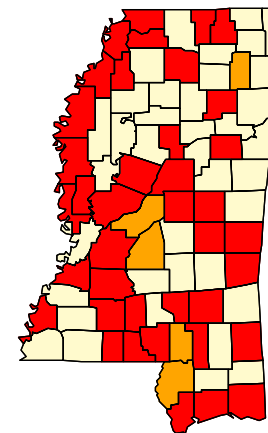
Congenital syphilis

- CASES: Mississippi reported 2 cases in 2008.
- RATES: Mississippi ranked 22 among 26 states; Washington, DC; and 1 territory reporting congenital syphilis cases with a rate of 4.3 cases per 100,000 live births compared to the U.S. rate of 10.1 cases per 100,000.

Syphilis: P&S Rates and Congenital Cases, Mississippi, 1999-2008



Total P&S Syphilis Rates by County, Mississippi, 2008



Rate (per 100,000 population)



Missouri, 2008

Primary and secondary syphilis

- CASES: Missouri reported 224 cases in 2008.
- RATES: Missouri ranked 16 among 50 states; Washington, DC; and 3 territories with 3.8 cases per 100,000 population compared to the U.S. rate of 4.5 cases per 100,000 population.

Rates of primary and secondary syphilis, by sex

- In Missouri, the rate among males was 6.8 per 100,000 population compared to the U.S. male rate of 7.6 per 100,000.
- The rate among females was 1.0 per 100,000 compared to the U.S. female rate of 1.5 per 100,000.

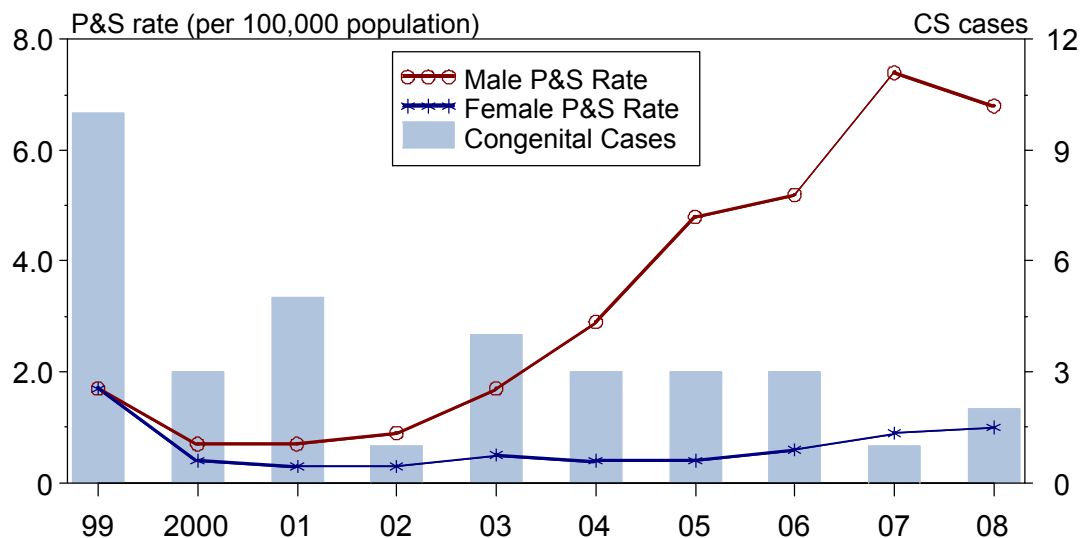
Rates of primary and secondary syphilis, by race/ethnicity

- In Missouri, the race/ethnicity adjusted rates per 100,000 population were 2.4 among whites, 13.1 among blacks, 7.8 among Hispanics, 2.1 among Asian/Pacific Islanders, and 6.5 among American Indians/Alaska Natives.
- The rate among blacks was 5.5 times that of whites.
- The rate among Hispanics was 3.3 times that of whites.
- The rate among American Indians/Alaska Natives was 2.7 times that of whites.

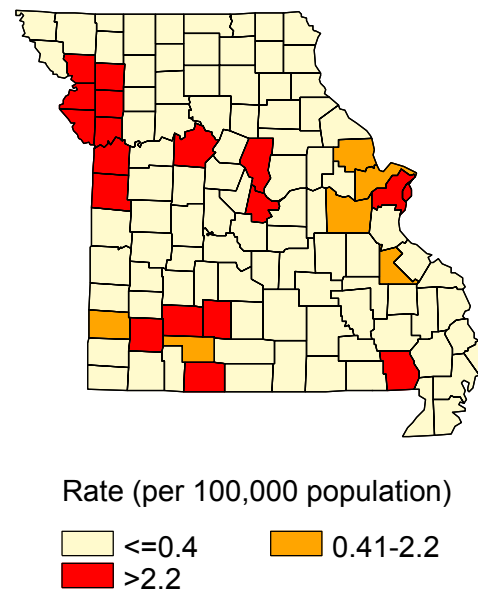
Congenital syphilis

- CASES: Missouri reported 2 cases in 2008.
- RATES: Missouri ranked 26 among 26 states; Washington, DC; and 1 territory reporting congenital syphilis cases with a rate of 2.5 cases per 100,000 live births compared to the U.S. rate of 10.1 cases per 100,000.

Syphilis: P&S Rates and Congenital Cases, Missouri, 1999-2008



Total P&S Syphilis Rates by County, Missouri, 2008



Montana, 2008

Primary and secondary syphilis

- CASES: Montana reported 7 cases in 2008.
- RATES: Montana ranked 45 among 50 states; Washington, DC; and 3 territories with 0.7 cases per 100,000 population compared to the U.S. rate of 4.5 cases per 100,000 population.

Rates of primary and secondary syphilis, by sex

- In Montana, the rate among males was 1.3 per 100,000 population compared to the U.S. male rate of 7.6 per 100,000.
- The rate among females was 0.2 per 100,000 compared to the U.S. female rate of 1.5 per 100,000.

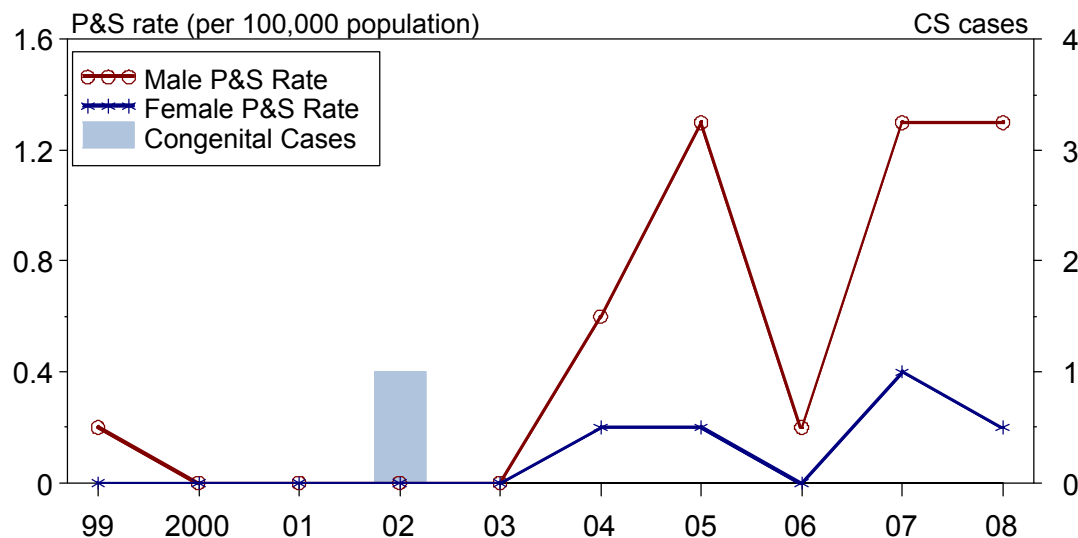
Rates of primary and secondary syphilis, by race/ethnicity

- In Montana, the race/ethnicity adjusted rates per 100,000 population were 0.5 among whites, 13.6 among blacks, 7.5 among Hispanics, 0.0 among Asian/Pacific Islanders, and 0.0 among American Indians/Alaska Natives.
- The rate among blacks was 27.2 times that of whites.
- The rate among Hispanics was 15 times that of whites.

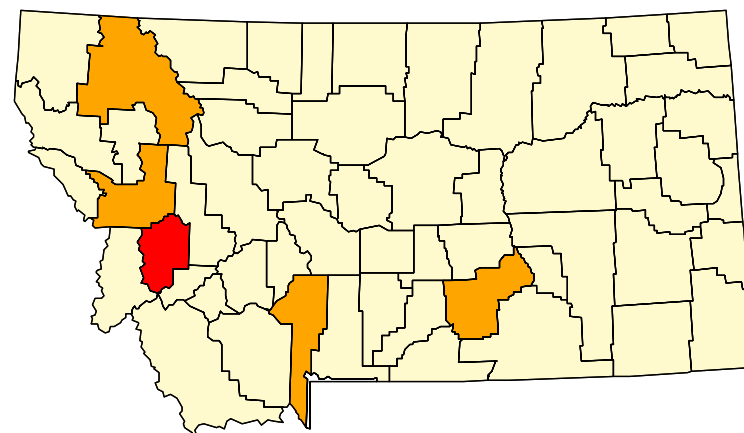
Congenital syphilis

- CASES: Montana reported 0 cases in 2008.
- RATES: Montana had a rate of 0.0 cases per 100,000 live births compared to the U.S. rate of 10.1 cases per 100,000.

Syphilis: P&S Rates and Congenital Cases, Montana, 1999-2008



Total P&S Syphilis Rates by County, Montana, 2008



Rate (per 100,000 population)



Nebraska, 2008

Primary and secondary syphilis

- CASES: Nebraska reported 15 cases in 2008.
- RATES: Nebraska ranked 43 among 50 states; Washington, DC; and 3 territories with 0.8 cases per 100,000 population compared to the U.S. rate of 4.5 cases per 100,000 population.

Rates of primary and secondary syphilis, by sex

- In Nebraska, the rate among males was 1.4 per 100,000 population compared to the U.S. male rate of 7.6 per 100,000.
- The rate among females was 0.3 per 100,000 compared to the U.S. female rate of 1.5 per 100,000.

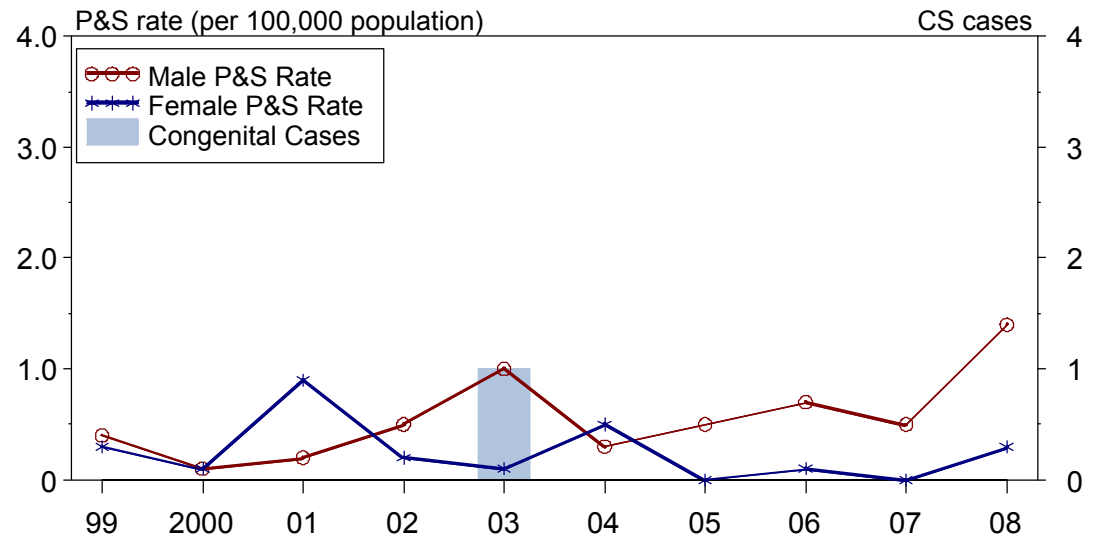
Rates of primary and secondary syphilis, by race/ethnicity

- In Nebraska, the race/ethnicity adjusted rates per 100,000 population were 0.6 among whites, 6.1 among blacks, 0.7 among Hispanics, 0.0 among Asian/Pacific Islanders, and 0.0 among American Indians/Alaska Natives.
- The rate among blacks was 10.2 times that of whites.
- The rate among Hispanics was 1.2 times that of whites.

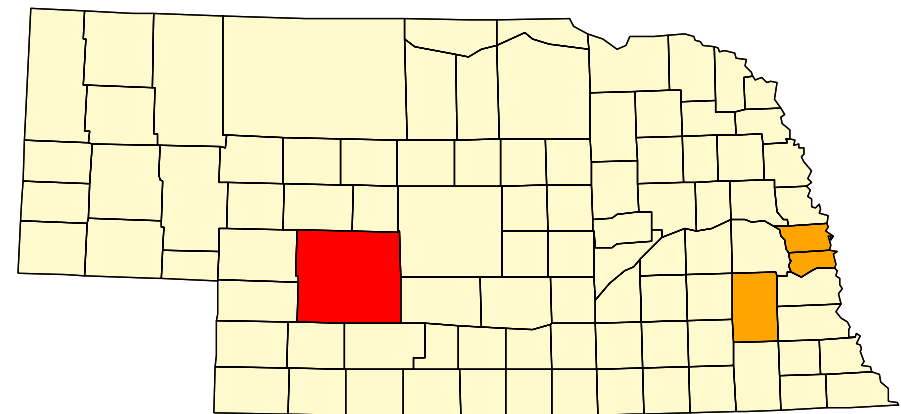
Congenital syphilis

- CASES: Nebraska reported 0 cases in 2008.
- RATES: Nebraska had a rate of 0.0 cases per 100,000 live births compared to the U.S. rate of 10.1 cases per 100,000.

Syphilis: P&S Rates and Congenital Cases, Nebraska, 1999-2008



Total P&S Syphilis Rates by County, Nebraska, 2008



Rate (per 100,000 population)



Nevada, 2008

Primary and secondary syphilis

- CASES: Nevada reported 77 cases in 2008.
- RATES: Nevada ranked 22 among 50 states; Washington, DC; and 3 territories with 3 cases per 100,000 population compared to the U.S. rate of 4.5 cases per 100,000 population.

Rates of primary and secondary syphilis, by sex

- In Nevada, the rate among males was 4.8 per 100,000 population compared to the U.S. male rate of 7.6 per 100,000.
- The rate among females was 1.1 per 100,000 compared to the U.S. female rate of 1.5 per 100,000.

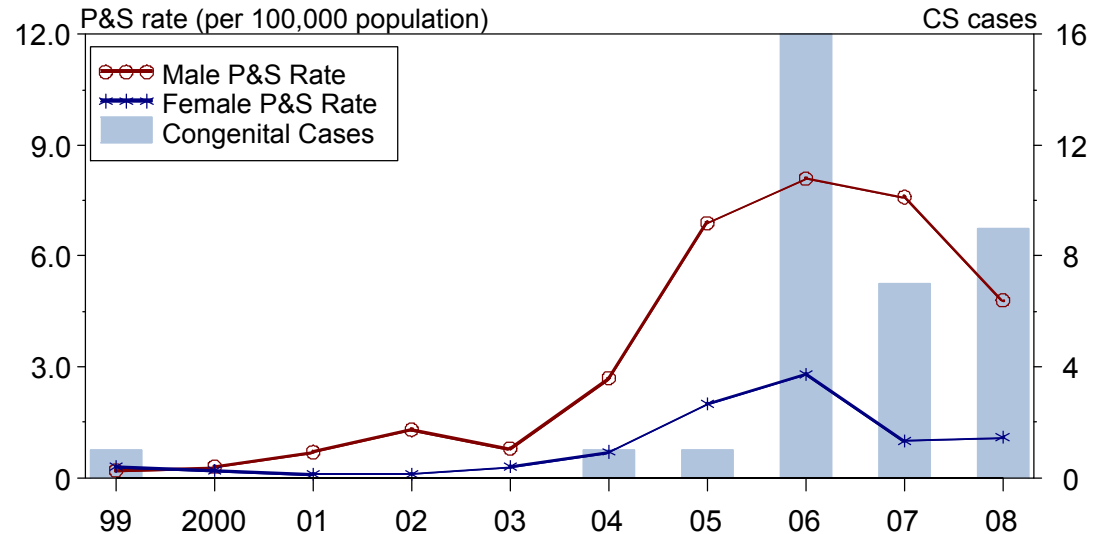
Rates of primary and secondary syphilis, by race/ethnicity

- In Nevada, the race/ethnicity adjusted rates per 100,000 population were 2.2 among whites, 12.0 among blacks, 2.5 among Hispanics, 1.1 among Asian/Pacific Islanders, and 0.0 among American Indians/Alaska Natives.
- The rate among blacks was 5.5 times that of whites.
- The rate among Hispanics was 1.1 times that of whites.

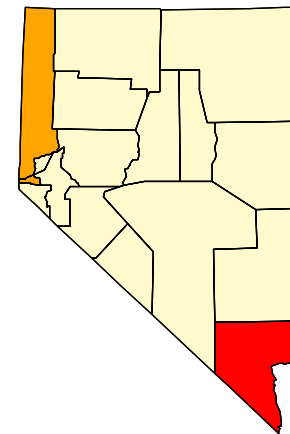
Congenital syphilis

- CASES: Nevada reported 9 cases in 2008.
- RATES: Nevada ranked 5 among 26 states; Washington, DC; and 1 territory reporting congenital syphilis cases with a rate of 22.5 cases per 100,000 live births compared to the U.S. rate of 10.1 cases per 100,000.

Syphilis: P&S Rates and Congenital Cases, Nevada, 1999-2008



Total P&S Syphilis Rates by County, Nevada, 2008



Rate (per 100,000 population)



New Hampshire, 2008

Primary and secondary syphilis

- CASES: New Hampshire reported 20 cases in 2008.
- RATES: New Hampshire ranked 38 among 50 states; Washington, DC; and 3 territories with 1.5 cases per 100,000 population compared to the U.S. rate of 4.5 cases per 100,000 population.

Rates of primary and secondary syphilis, by sex

- In New Hampshire, the rate among males was 3.1 per 100,000 population compared to the U.S. male rate of 7.6 per 100,000.
- The rate among females was 0.0 per 100,000 compared to the U.S. female rate of 1.5 per 100,000.

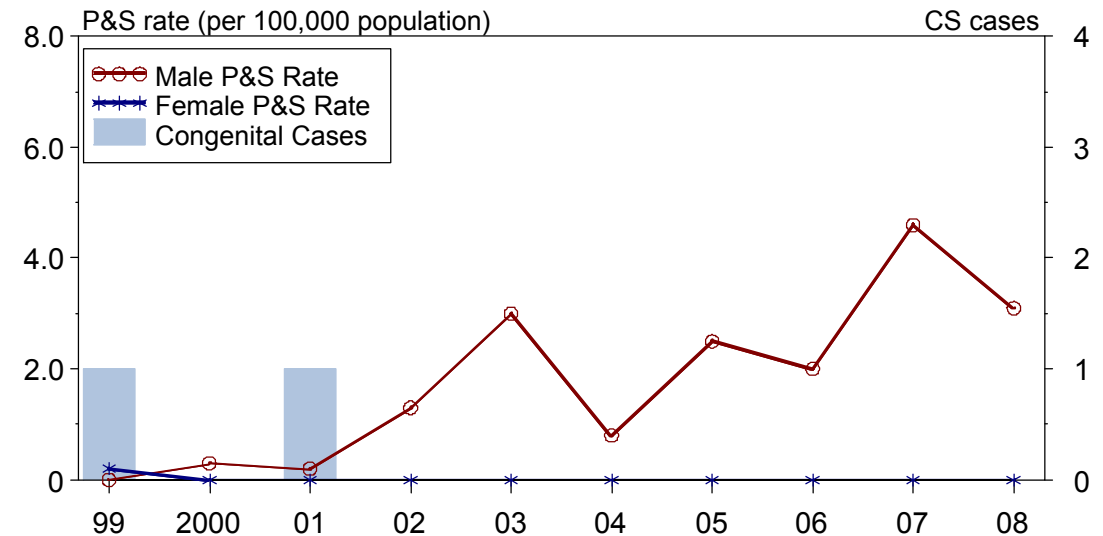
Rates of primary and secondary syphilis, by race/ethnicity

- In New Hampshire, the race/ethnicity adjusted rates per 100,000 population were 1.6 among whites, 0.0 among blacks, 0.0 among Hispanics, 0.0 among Asian/Pacific Islanders, and 0.0 among American Indians/Alaska Natives.

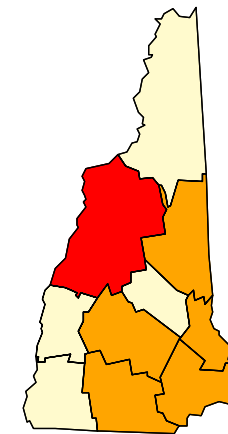
Congenital syphilis

- CASES: New Hampshire reported 0 cases in 2008.
- RATES: New Hampshire had a rate of 0.0 cases per 100,000 live births compared to the U.S. rate of 10.1 cases per 100,000.

Syphilis: P&S Rates and Congenital Cases, New Hampshire, 1999-2008



Total P&S Syphilis Rates by County, New Hampshire, 2008



Rate (per 100,000 population)



New Jersey, 2008

Primary and secondary syphilis

- CASES: New Jersey reported 226 cases in 2008.
- RATES: New Jersey ranked 24 among 50 states; Washington, DC; and 3 territories with 2.6 cases per 100,000 population compared to the U.S. rate of 4.5 cases per 100,000 population.

Rates of primary and secondary syphilis, by sex

- In New Jersey, the rate among males was 4.8 per 100,000 population compared to the U.S. male rate of 7.6 per 100,000.
- The rate among females was 0.5 per 100,000 compared to the U.S. female rate of 1.5 per 100,000.

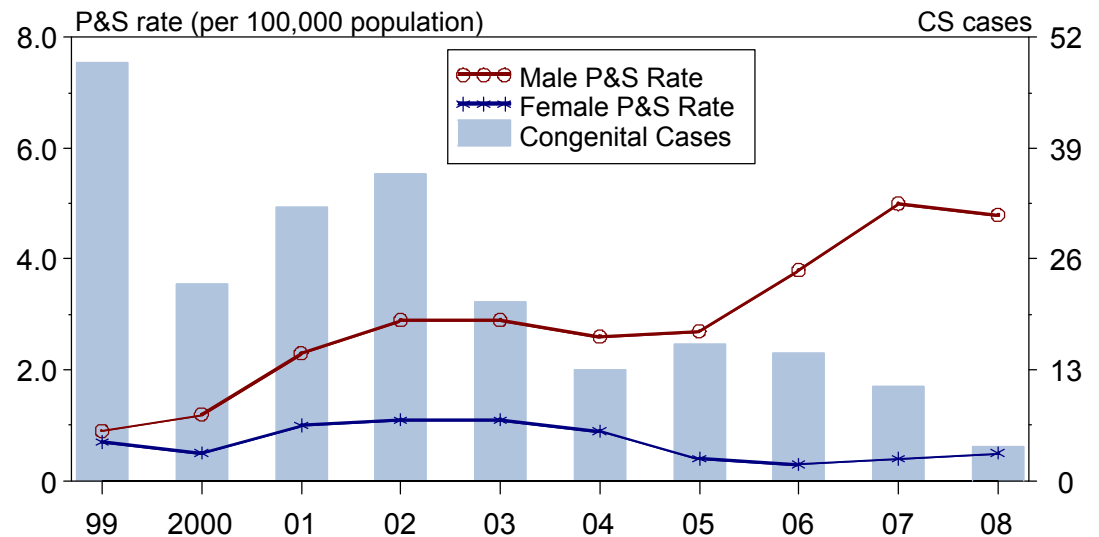
Rates of primary and secondary syphilis, by race/ethnicity

- In New Jersey, the race/ethnicity adjusted rates per 100,000 population were 1.3 among whites, 8.0 among blacks, 4.0 among Hispanics, 0.8 among Asian/Pacific Islanders, and 0.0 among American Indians/Alaska Natives.
- The rate among blacks was 6.2 times that of whites.
- The rate among Hispanics was 3.1 times that of whites.

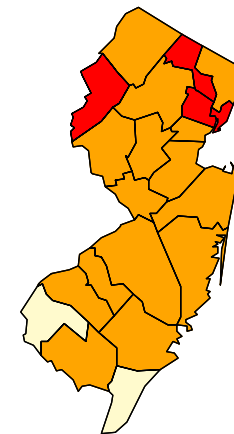
Congenital syphilis

- CASES: New Jersey reported 4 cases in 2008.
- RATES: New Jersey ranked 24 among 26 states; Washington, DC; and 1 territory reporting congenital syphilis cases with a rate of 3.5 cases per 100,000 live births compared to the U.S. rate of 10.1 cases per 100,000.

Syphilis: P&S Rates and Congenital Cases, New Jersey, 1999-2008



Total P&S Syphilis Rates by County, New Jersey, 2008



Rate (per 100,000 population)



New Mexico, 2008

Primary and secondary syphilis

- CASES: New Mexico reported 44 cases in 2008.
- RATES: New Mexico ranked 28 among 50 states; Washington, DC; and 3 territories with 2.2 cases per 100,000 population compared to the U.S. rate of 4.5 cases per 100,000 population.

Rates of primary and secondary syphilis, by sex

- In New Mexico, the rate among males was 3.9 per 100,000 population compared to the U.S. male rate of 7.6 per 100,000.
- The rate among females was 0.6 per 100,000 compared to the U.S. female rate of 1.5 per 100,000.

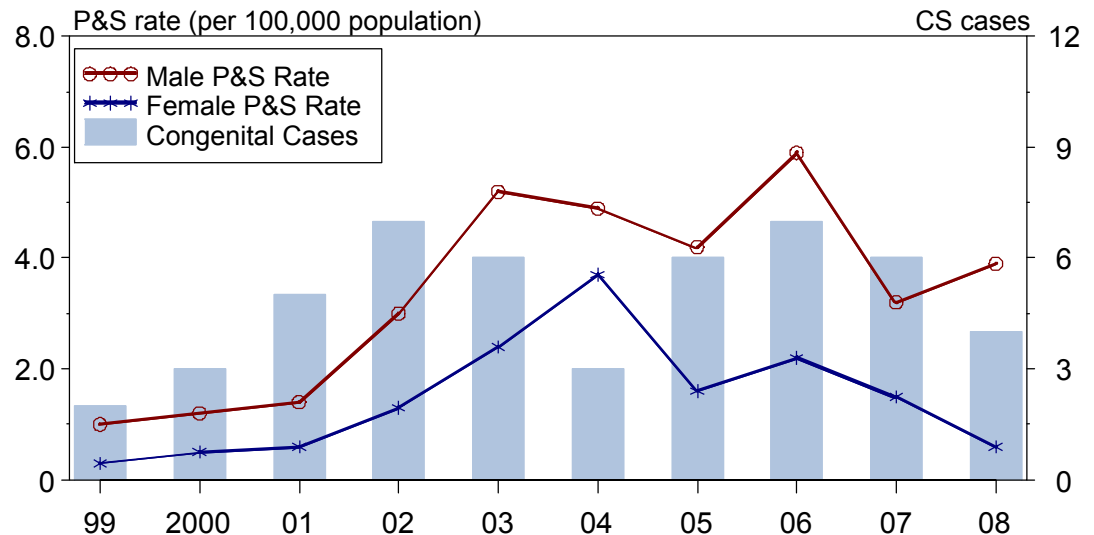
Rates of primary and secondary syphilis, by race/ethnicity

- In New Mexico, the race/ethnicity adjusted rates per 100,000 population were 1.7 among whites, 2.1 among blacks, 2.2 among Hispanics, 0.0 among Asian/Pacific Islanders, and 5.8 among American Indians/Alaska Natives.
- The rate among blacks was 1.2 times that of whites.
- The rate among Hispanics was 1.3 times that of whites.
- The rate among American Indians/Alaska Natives was 3.4 times that of whites.

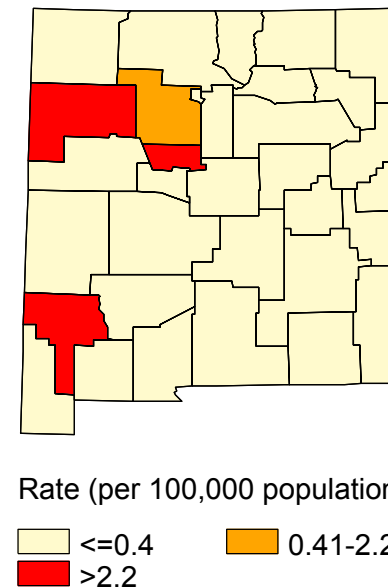
Congenital syphilis

- CASES: New Mexico reported 4 cases in 2008.
- RATES: New Mexico ranked 9 among 26 states; Washington, DC; and 1 territory reporting congenital syphilis cases with a rate of 13.4 cases per 100,000 live births compared to the U.S. rate of 10.1 cases per 100,000.

Syphilis: P&S Rates and Congenital Cases, New Mexico, 1999-2008



Total P&S Syphilis Rates by County, New Mexico, 2008



New York, 2008

Primary and secondary syphilis

- CASES: New York reported 1,217 cases in 2008.
- RATES: New York ranked 8 among 50 states; Washington, DC; and 3 territories with 6.3 cases per 100,000 population compared to the U.S. rate of 4.5 cases per 100,000 population.

Rates of primary and secondary syphilis, by sex

- In New York, the rate among males was 12.4 per 100,000 population compared to the U.S. male rate of 7.6 per 100,000.
- The rate among females was 0.5 per 100,000 compared to the U.S. female rate of 1.5 per 100,000.

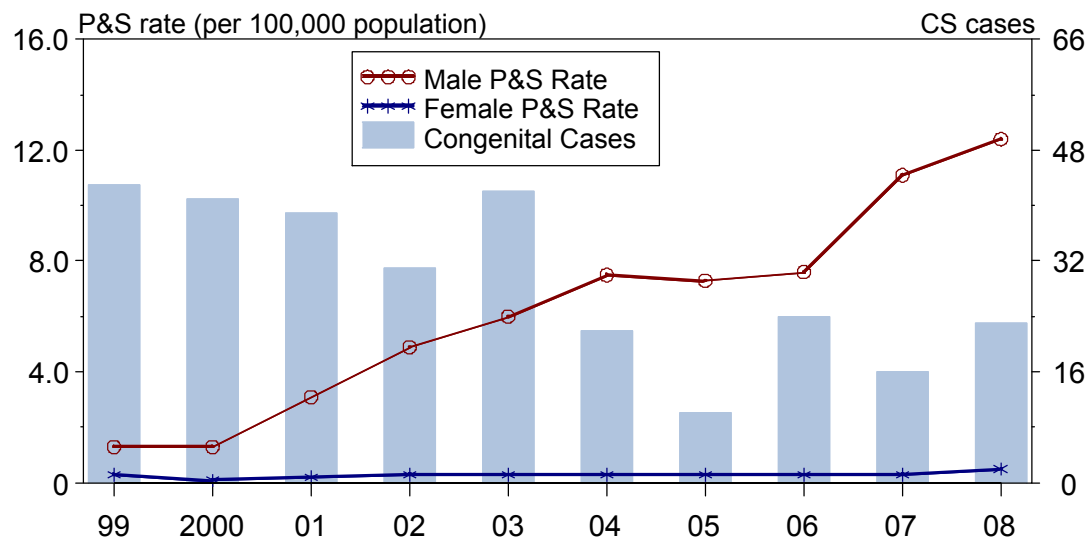
Rates of primary and secondary syphilis, by race/ethnicity

- In New York, the race/ethnicity adjusted rates per 100,000 population were 3.0 among whites, 17.9 among blacks, 9.6 among Hispanics, 1.8 among Asian/Pacific Islanders, and 6.9 among American Indians/Alaska Natives.
- The rate among blacks was 6 times that of whites.
- The rate among Hispanics was 3.2 times that of whites.
- The rate among American Indians/Alaska Natives was 2.3 times that of whites.

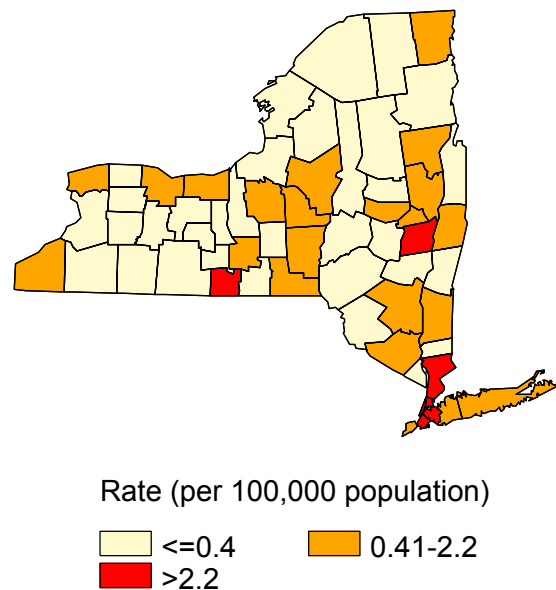
Congenital syphilis

- CASES: New York reported 23 cases in 2008.
- RATES: New York ranked 13 among 26 states; Washington, DC; and 1 territory reporting congenital syphilis cases with a rate of 9.2 cases per 100,000 live births compared to the U.S. rate of 10.1 cases per 100,000.

Syphilis: P&S Rates and Congenital Cases, New York, 1999-2008



Total P&S Syphilis Rates by County, New York, 2008



North Carolina, 2008

Primary and secondary syphilis

- CASES: North Carolina reported 287 cases in 2008.
- RATES: North Carolina ranked 20 among 50 states; Washington, DC; and 3 territories with 3.2 cases per 100,000 population compared to the U.S. rate of 4.5 cases per 100,000 population.

Rates of primary and secondary syphilis, by sex

- In North Carolina, the rate among males was 5.5 per 100,000 population compared to the U.S. male rate of 7.6 per 100,000.
- The rate among females was 0.9 per 100,000 compared to the U.S. female rate of 1.5 per 100,000.

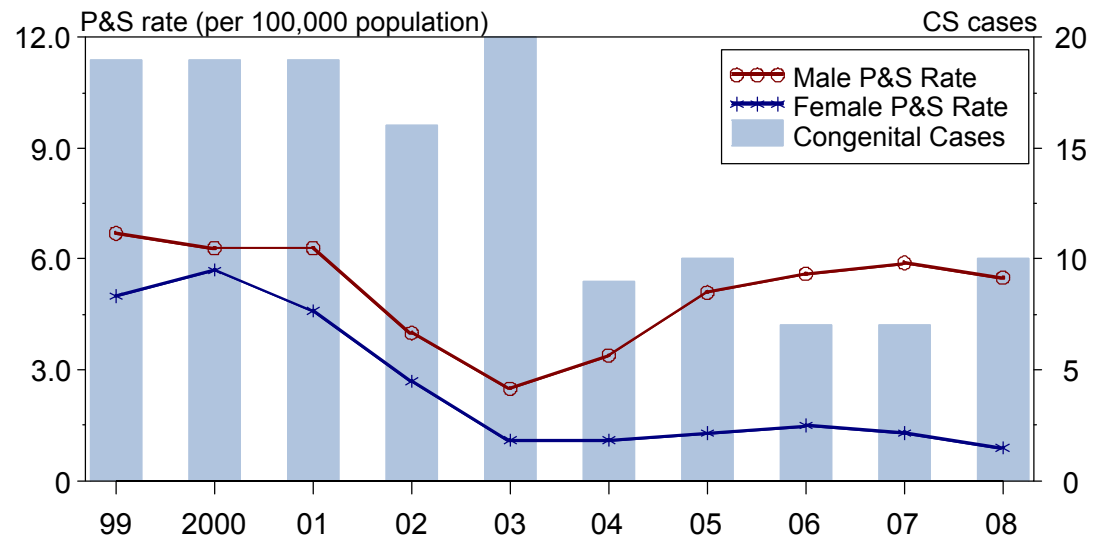
Rates of primary and secondary syphilis, by race/ethnicity

- In North Carolina, the race/ethnicity adjusted rates per 100,000 population were 1.2 among whites, 10.1 among blacks, 1.9 among Hispanics, 1.1 among Asian/Pacific Islanders, and 0.0 among American Indians/Alaska Natives.
- The rate among blacks was 8.4 times that of whites.
- The rate among Hispanics was 1.6 times that of whites.

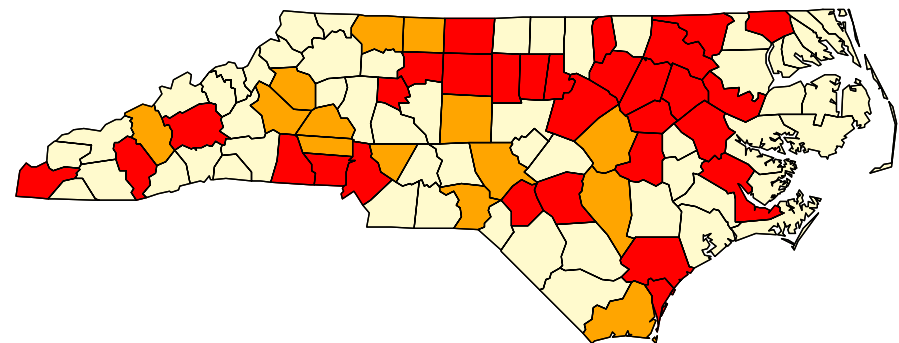
Congenital syphilis

- CASES: North Carolina reported 10 cases in 2008.
- RATES: North Carolina ranked 14 among 26 states; Washington, DC; and 1 territory reporting congenital syphilis cases with a rate of 7.8 cases per 100,000 live births compared to the U.S. rate of 10.1 cases per 100,000.

Syphilis: P&S Rates and Congenital Cases, North Carolina, 1999-2008



Total P&S Syphilis Rates by County, North Carolina, 2008



Rate (per 100,000 population)



North Dakota, 2008

Primary and secondary syphilis

- CASES: North Dakota reported 0 cases in 2008.
- RATES: North Dakota reported 0 cases per 100,000 population compared to the U.S. rate of 4.5 cases per 100,000 population.

Rates of primary and secondary syphilis, by sex

- In North Dakota, the rate among males was 0.0 per 100,000 population compared to the U.S. male rate of 7.6 per 100,000.
- The rate among females was 0.0 per 100,000 compared to the U.S. female rate of 1.5 per 100,000.

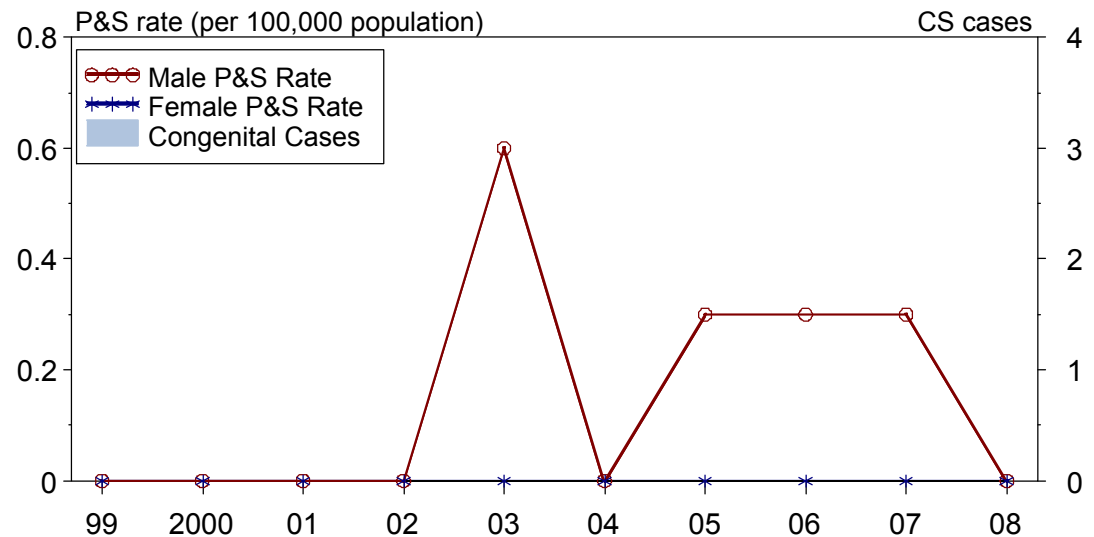
Rates of primary and secondary syphilis, by race/ethnicity

- In North Dakota, the race/ethnicity adjusted rates per 100,000 population were 0.0 among whites, 0.0 among blacks, 0.0 among Hispanics, 0.0 among Asian/Pacific Islanders, and 0.0 among American Indians/Alaska Natives.

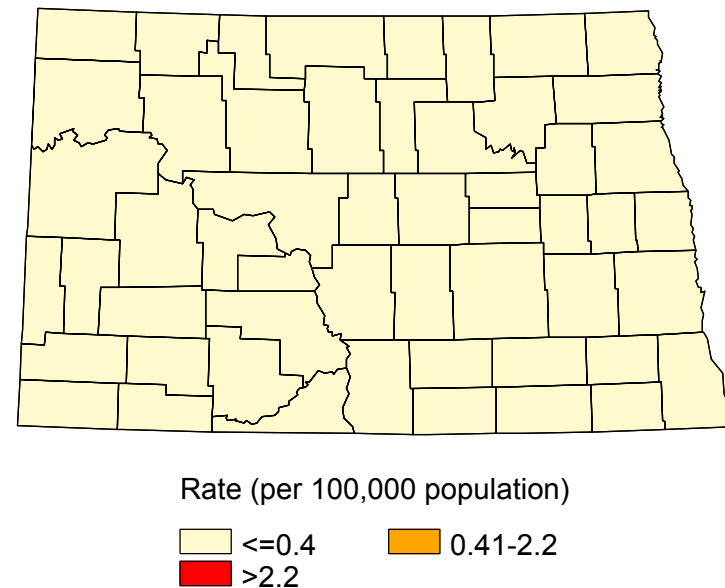
Congenital syphilis

- CASES: North Dakota reported 0 cases in 2008.
- RATES: North Dakota had a rate of 0.0 cases per 100,000 live births compared to the U.S. rate of 10.1 cases per 100,000.

Syphilis: P&S Rates and Congenital Cases, North Dakota, 1999-2008



Total P&S Syphilis Rates by County, North Dakota, 2008



Ohio, 2008

Primary and secondary syphilis

- CASES: Ohio reported 351 cases in 2008.
- RATES: Ohio ranked 21 among 50 states; Washington, DC; and 3 territories with 3.1 cases per 100,000 population compared to the U.S. rate of 4.5 cases per 100,000 population.

Rates of primary and secondary syphilis, by sex

- In Ohio, the rate among males was 5.2 per 100,000 population compared to the U.S. male rate of 7.6 per 100,000.
- The rate among females was 1.1 per 100,000 compared to the U.S. female rate of 1.5 per 100,000.

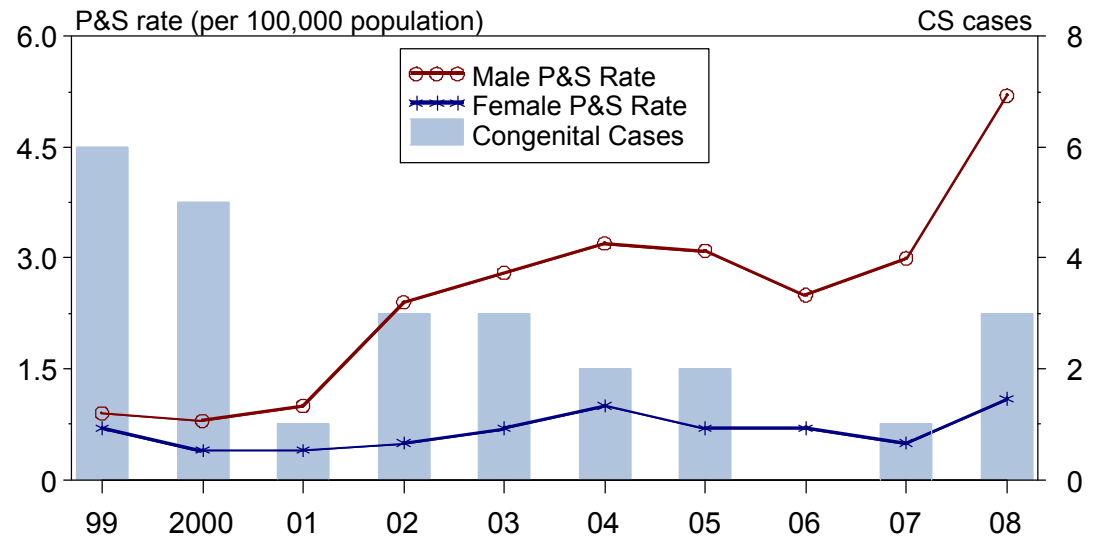
Rates of primary and secondary syphilis, by race/ethnicity

- In Ohio, the race/ethnicity adjusted rates per 100,000 population were 1.7 among whites, 12.3 among blacks, 3.5 among Hispanics, 1.6 among Asian/Pacific Islanders, and 0.0 among American Indians/Alaska Natives.
- The rate among blacks was 7.2 times that of whites.
- The rate among Hispanics was 2.1 times that of whites.

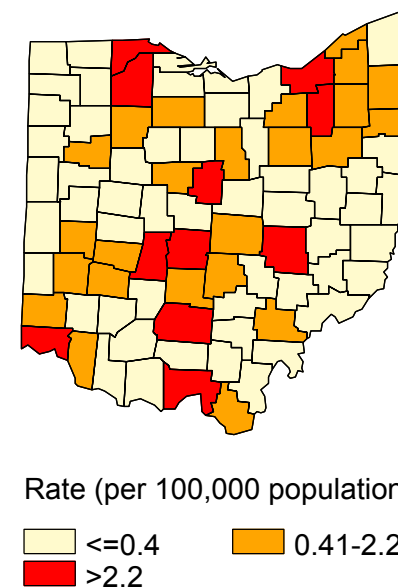
Congenital syphilis

- CASES: Ohio reported 3 cases in 2008.
- RATES: Ohio ranked 27 among 26 states; Washington, DC; and 1 territory reporting congenital syphilis cases with a rate of 2.0 cases per 100,000 live births compared to the U.S. rate of 10.1 cases per 100,000.

Syphilis: P&S Rates and Congenital Cases, Ohio, 1999-2008



Total P&S Syphilis Rates by County, Ohio, 2008



Oklahoma, 2008

Primary and secondary syphilis

- CASES: Oklahoma reported 86 cases in 2008.
- RATES: Oklahoma ranked 26 among 50 states; Washington, DC; and 3 territories with 2.4 cases per 100,000 population compared to the U.S. rate of 4.5 cases per 100,000 population.

Rates of primary and secondary syphilis, by sex

- In Oklahoma, the rate among males was 3.4 per 100,000 population compared to the U.S. male rate of 7.6 per 100,000.
- The rate among females was 1.4 per 100,000 compared to the U.S. female rate of 1.5 per 100,000.

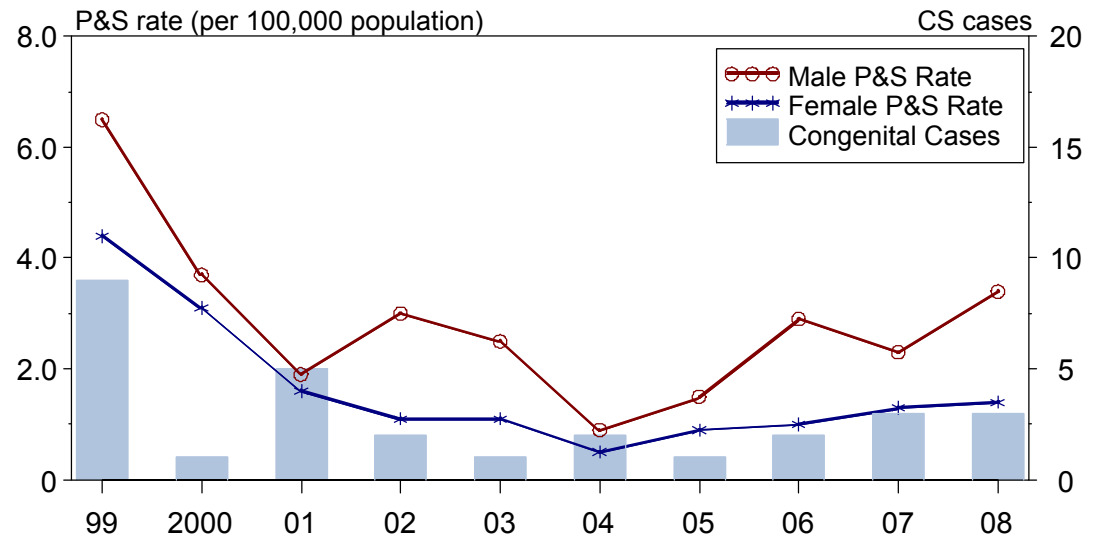
Rates of primary and secondary syphilis, by race/ethnicity

- In Oklahoma, the race/ethnicity adjusted rates per 100,000 population were 0.9 among whites, 13.6 among blacks, 4.6 among Hispanics, 1.5 among Asian/Pacific Islanders, and 2.6 among American Indians/Alaska Natives.
- The rate among blacks was 15.1 times that of whites.
- The rate among Hispanics was 5.1 times that of whites.
- The rate among Asian/Pacific Islanders was 1.7 times that of whites.
- The rate among American Indians/Alaska Natives was 2.9 times that of whites.

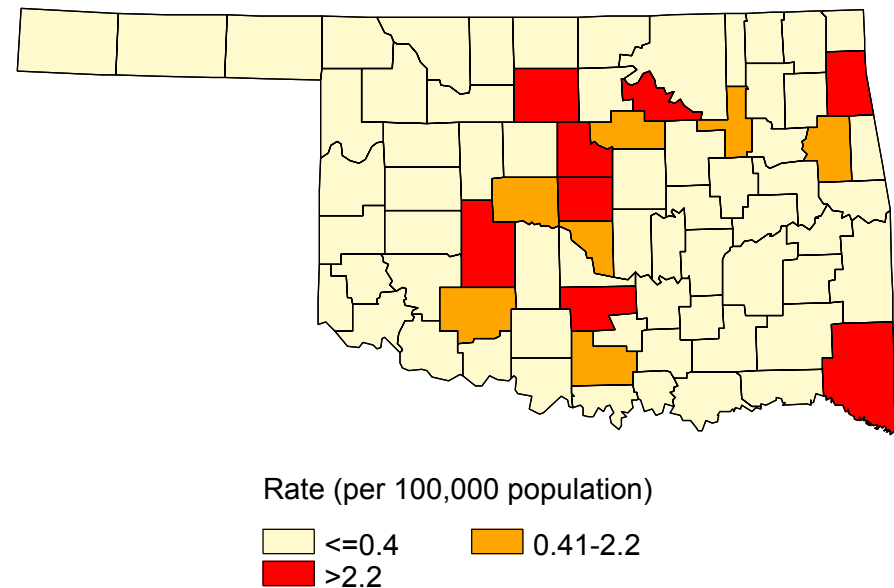
Congenital syphilis

- CASES: Oklahoma reported 3 cases in 2008.
- RATES: Oklahoma ranked 18 among 26 states; Washington, DC; and 1 territory reporting congenital syphilis cases with a rate of 5.6 cases per 100,000 live births compared to the U.S. rate of 10.1 cases per 100,000.

Syphilis: P&S Rates and Congenital Cases, Oklahoma, 1999-2008



Total P&S Syphilis Rates by County, Oklahoma, 2008



Oregon, 2008

Primary and secondary syphilis

- CASES: Oregon reported 26 cases in 2008.
- RATES: Oregon ranked 45 among 50 states; Washington, DC; and 3 territories with 0.7 cases per 100,000 population compared to the U.S. rate of 4.5 cases per 100,000 population.

Rates of primary and secondary syphilis, by sex

- In Oregon, the rate among males was 1.3 per 100,000 population compared to the U.S. male rate of 7.6 per 100,000.
- The rate among females was 0.1 per 100,000 compared to the U.S. female rate of 1.5 per 100,000.

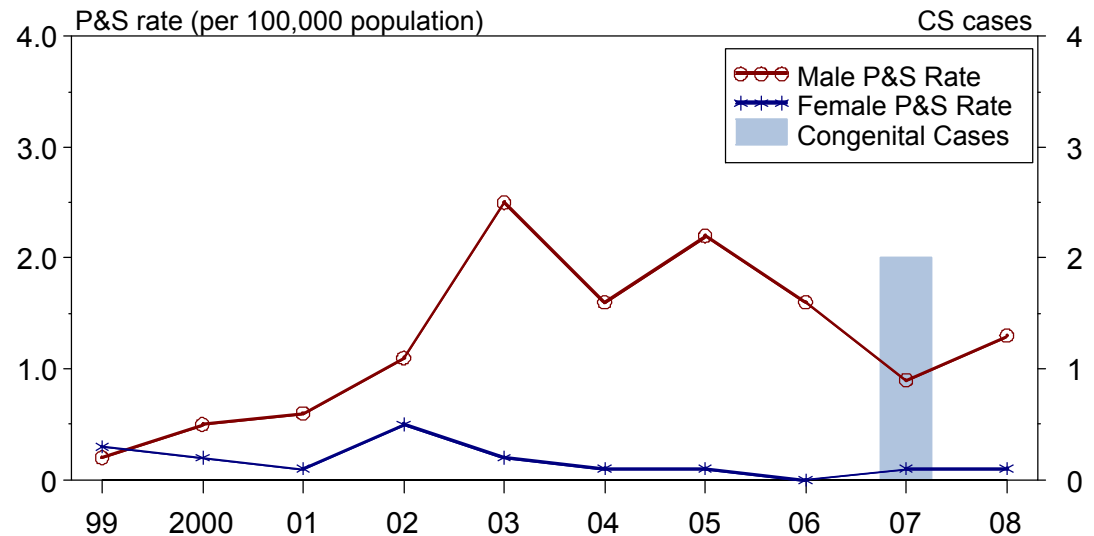
Rates of primary and secondary syphilis, by race/ethnicity

- In Oregon, the race/ethnicity adjusted rates per 100,000 population were 0.7 among whites, 0.0 among blacks, 1.3 among Hispanics, 0.0 among Asian/Pacific Islanders, and 0.0 among American Indians/Alaska Natives.
- The rate among Hispanics was 1.9 times that of whites.

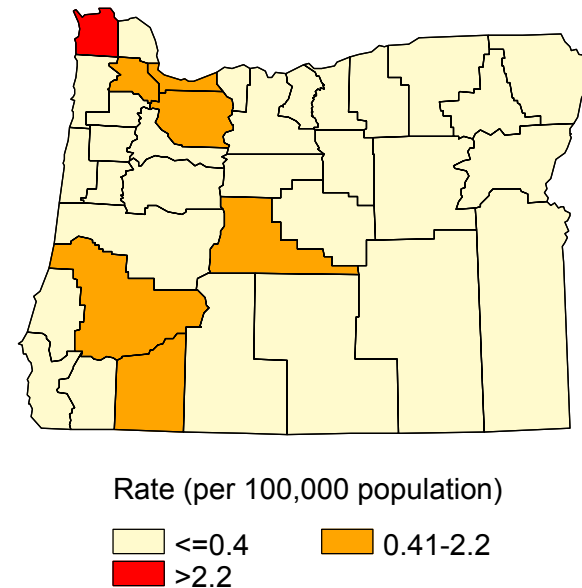
Congenital syphilis

- CASES: Oregon reported 0 cases in 2008.
- RATES: Oregon had a rate of 0.0 cases per 100,000 live births compared to the U.S. rate of 10.1 cases per 100,000.

Syphilis: P&S Rates and Congenital Cases, Oregon, 1999-2008



Total P&S Syphilis Rates by County, Oregon, 2008



Pennsylvania, 2008

Primary and secondary syphilis

- CASES: Pennsylvania reported 272 cases in 2008.
- RATES: Pennsylvania ranked 28 among 50 states; Washington, DC; and 3 territories with 2.2 cases per 100,000 population compared to the U.S. rate of 4.5 cases per 100,000 population.

Rates of primary and secondary syphilis, by sex

- In Pennsylvania, the rate among males was 4.1 per 100,000 population compared to the U.S. male rate of 7.6 per 100,000.
- The rate among females was 0.3 per 100,000 compared to the U.S. female rate of 1.5 per 100,000.

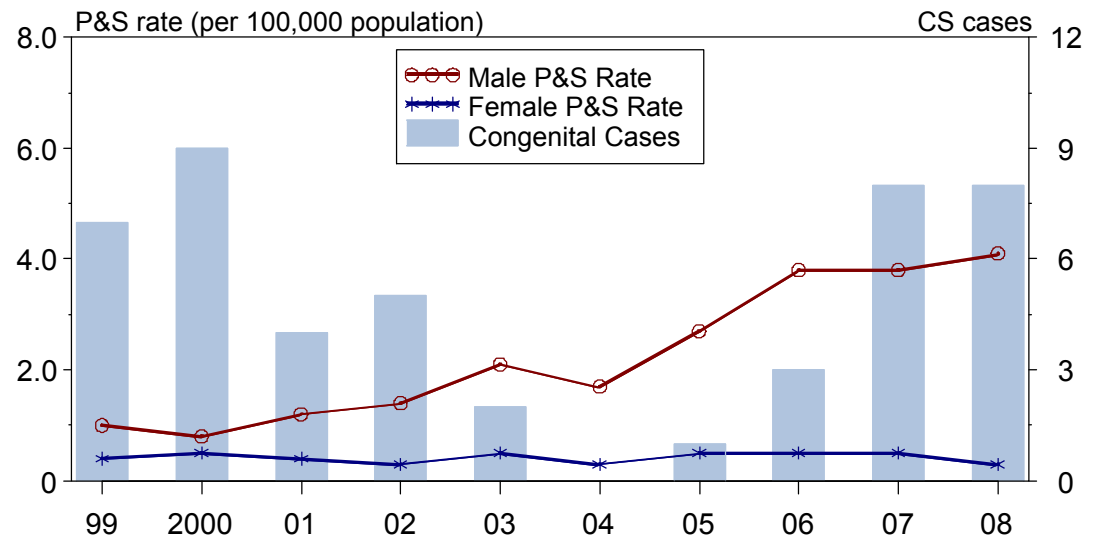
Rates of primary and secondary syphilis, by race/ethnicity

- In Pennsylvania, the race/ethnicity adjusted rates per 100,000 population were 0.9 among whites, 11.9 among blacks, 4.5 among Hispanics, 0.3 among Asian/Pacific Islanders, and 0.0 among American Indians/Alaska Natives.
- The rate among blacks was 13.2 times that of whites.
- The rate among Hispanics was 5 times that of whites.

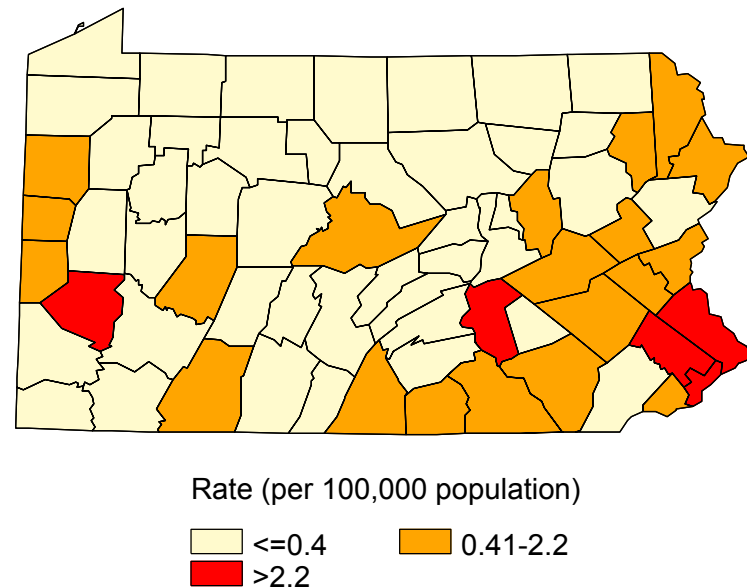
Congenital syphilis

- CASES: Pennsylvania reported 8 cases in 2008.
- RATES: Pennsylvania ranked 19 among 26 states; Washington, DC; and 1 territory reporting congenital syphilis cases with a rate of 5.4 cases per 100,000 live births compared to the U.S. rate of 10.1 cases per 100,000.

Syphilis: P&S Rates and Congenital Cases, Pennsylvania, 1999-2008



Total P&S Syphilis Rates by County, Pennsylvania, 2008



Puerto Rico, 2008

Primary and secondary syphilis

- CASES: Puerto Rico reported 167 cases in 2008.
- RATES: Puerto Rico ranked 15 among 50 states; Washington, DC; and 3 territories with 4.2 cases per 100,000 population compared to the U.S. rate of 4.5 cases per 100,000 population.

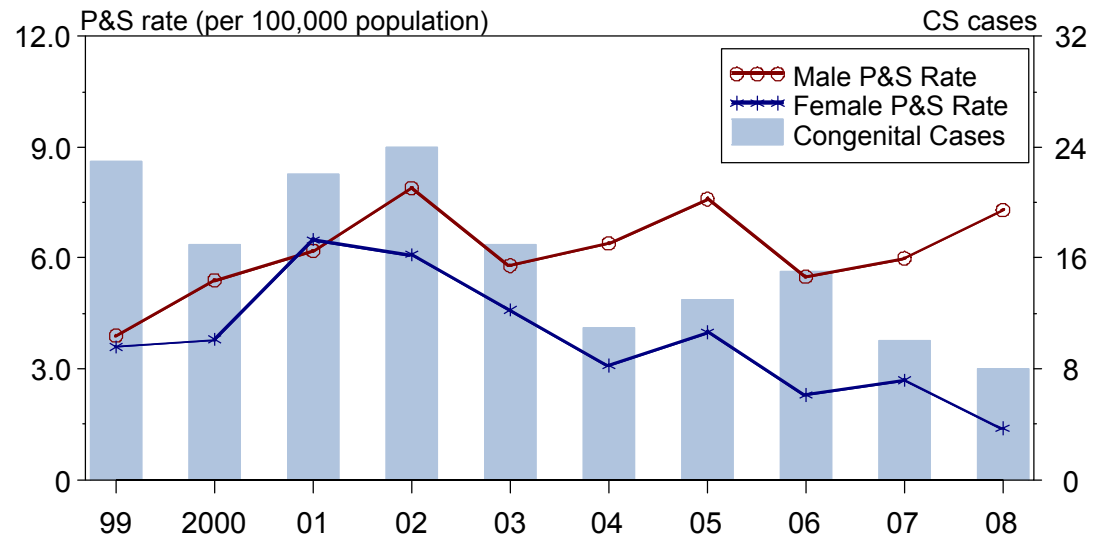
Rates of primary and secondary syphilis, by sex

- In Puerto Rico, the rate among males was 7.3 per 100,000 population compared to the U.S. male rate of 7.6 per 100,000.
- The rate among females was 1.4 per 100,000 compared to the U.S. female rate of 1.5 per 100,000.

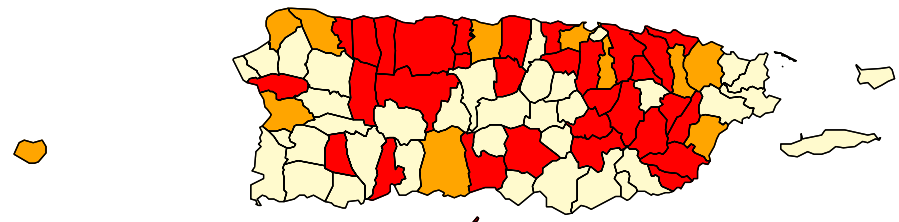
Congenital syphilis

- CASES: Puerto Rico reported 8 cases in 2008.
- RATES: Puerto Rico ranked 8 among 26 states; Washington, DC; and 1 territory reporting congenital syphilis cases with a rate of 16.5 cases per 100,000 live births compared to the U.S. rate of 10.1 cases per 100,000.

Syphilis: P&S Rates and Congenital Cases, Puerto Rico, 1999-2008



Total P&S Syphilis Rates by Municipality, Puerto Rico, 2008



Rate (per 100,000 population)



Rhode Island, 2008

Primary and secondary syphilis

- CASES: Rhode Island reported 18 cases in 2008.
- RATES: Rhode Island ranked 37 among 50 states; Washington, DC; and 3 territories with 1.7 cases per 100,000 population compared to the U.S. rate of 4.5 cases per 100,000 population.

Rates of primary and secondary syphilis, by sex

- In Rhode Island, the rate among males was 3.5 per 100,000 population compared to the U.S. male rate of 7.6 per 100,000.
- The rate among females was 0.0 per 100,000 compared to the U.S. female rate of 1.5 per 100,000.

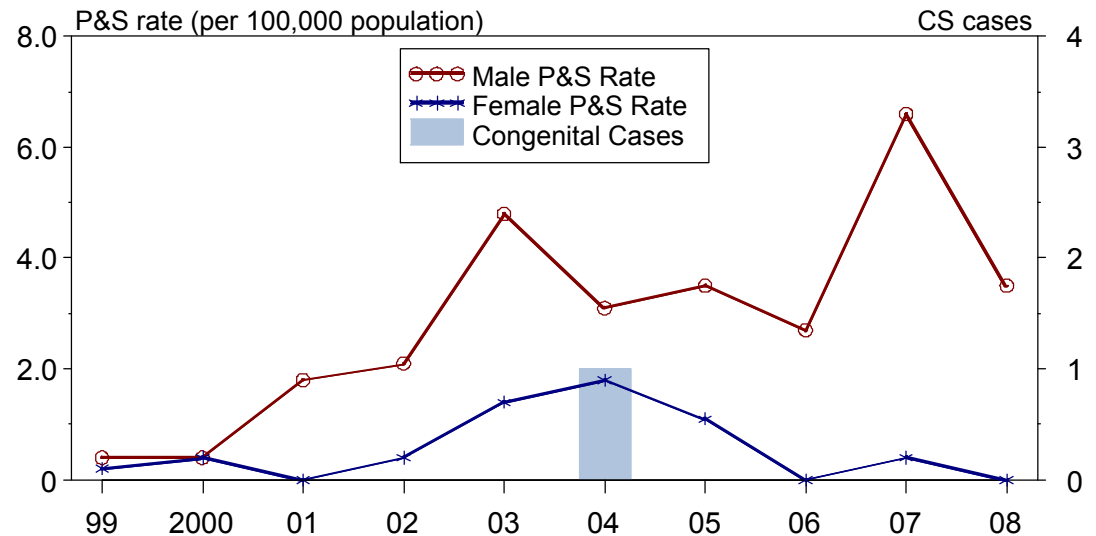
Rates of primary and secondary syphilis, by race/ethnicity

- In Rhode Island, the race/ethnicity adjusted rates per 100,000 population were 1.4 among whites, 6.9 among blacks, 0.8 among Hispanics, 3.3 among Asian/Pacific Islanders, and 0.0 among American Indians/Alaska Natives.
- The rate among blacks was 4.9 times that of whites.
- The rate among Asian/Pacific Islanders was 2.4 times that of whites.

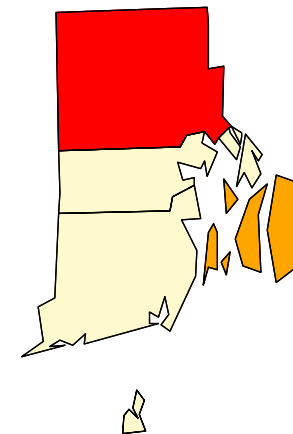
Congenital syphilis

- CASES: Rhode Island reported 0 cases in 2008.
- RATES: Rhode Island had a rate of 0.0 cases per 100,000 live births compared to the U.S. rate of 10.1 cases per 100,000.

Syphilis: P&S Rates and Congenital Cases, Rhode Island, 1999-2008



Total P&S Syphilis Rates by County, Rhode Island, 2008



Rate (per 100,000 population)



South Carolina, 2008

Primary and secondary syphilis

- CASES: South Carolina reported 98 cases in 2008.
- RATES: South Carolina ranked 28 among 50 states; Washington, DC; and 3 territories with 2.2 cases per 100,000 population compared to the U.S. rate of 4.5 cases per 100,000 population.

Rates of primary and secondary syphilis, by sex

- In South Carolina, the rate among males was 4.0 per 100,000 population compared to the U.S. male rate of 7.6 per 100,000.
- The rate among females was 0.5 per 100,000 compared to the U.S. female rate of 1.5 per 100,000.

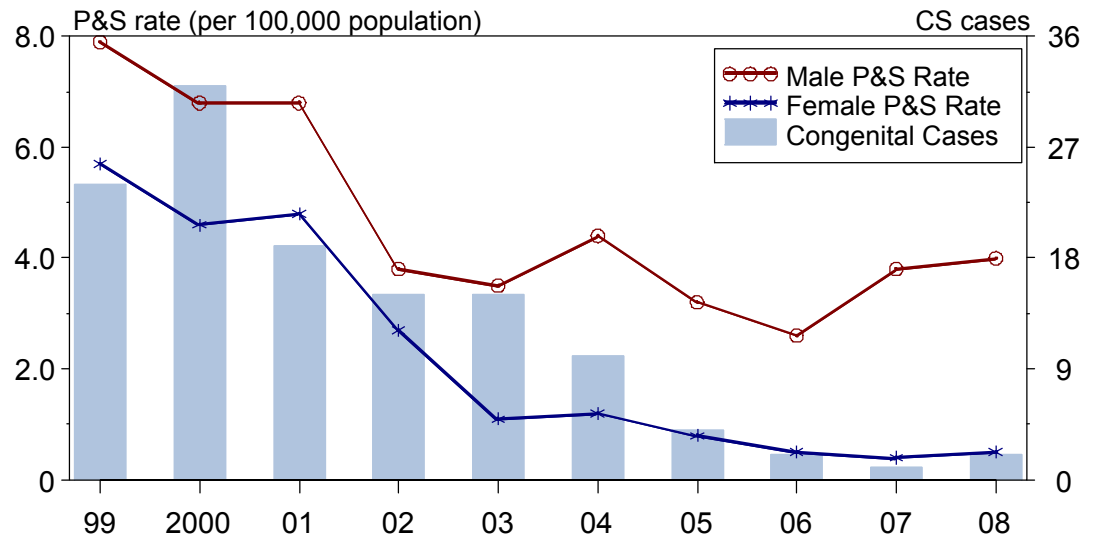
Rates of primary and secondary syphilis, by race/ethnicity

- In South Carolina, the race/ethnicity adjusted rates per 100,000 population were 0.9 among whites, 5.5 among blacks, 1.2 among Hispanics, 0.0 among Asian/Pacific Islanders, and 0.0 among American Indians/Alaska Natives.
- The rate among blacks was 6.1 times that of whites.
- The rate among Hispanics was 1.3 times that of whites.

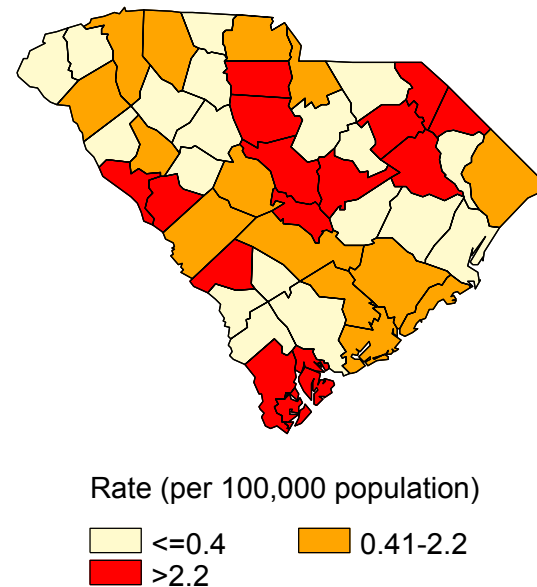
Congenital syphilis

- CASES: South Carolina reported 2 cases in 2008.
- RATES: South Carolina ranked 25 among 26 states; Washington, DC; and 1 territory reporting congenital syphilis cases with a rate of 3.2 cases per 100,000 live births compared to the U.S. rate of 10.1 cases per 100,000.

Syphilis: P&S Rates and Congenital Cases, South Carolina, 1999-2008



Total P&S Syphilis Rates by County, South Carolina, 2008



South Dakota, 2008

Primary and secondary syphilis

- CASES: South Dakota reported 1 case in 2008.
- RATES: South Dakota ranked 51 among 50 states; Washington, DC; and 3 territories with 0.1 cases per 100,000 population compared to the U.S. rate of 4.5 cases per 100,000 population.

Rates of primary and secondary syphilis, by sex

- In South Dakota, the rate among males was 0.0 per 100,000 population compared to the U.S. male rate of 7.6 per 100,000.
- The rate among females was 0.3 per 100,000 compared to the U.S. female rate of 1.5 per 100,000.

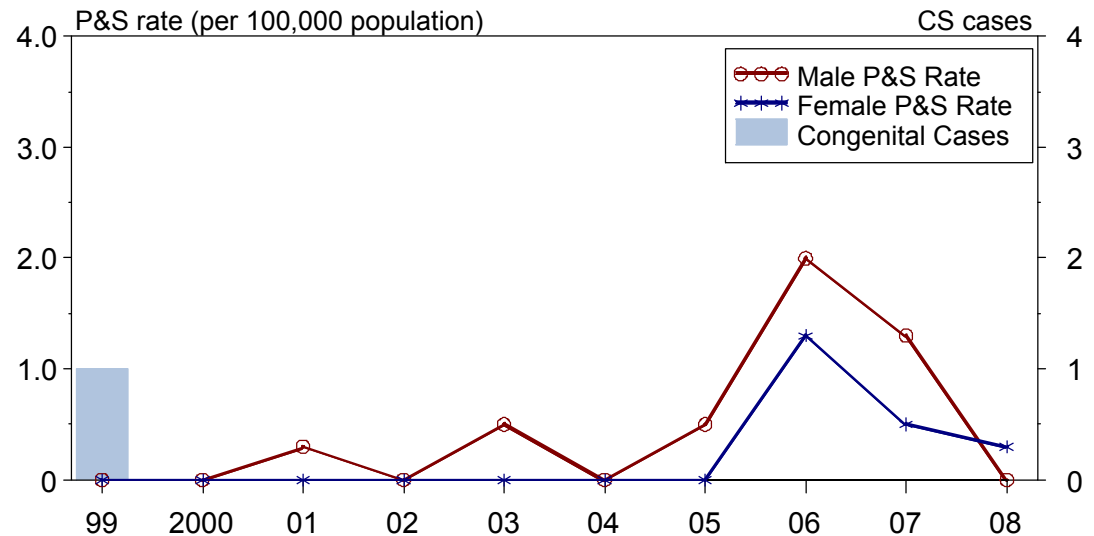
Rates of primary and secondary syphilis, by race/ethnicity

- In South Dakota, the race/ethnicity adjusted rates per 100,000 population were 0.0 among whites, 0.0 among blacks, 0.0 among Hispanics, 0.0 among Asian/Pacific Islanders, and 1.5 among American Indians/Alaska Natives.

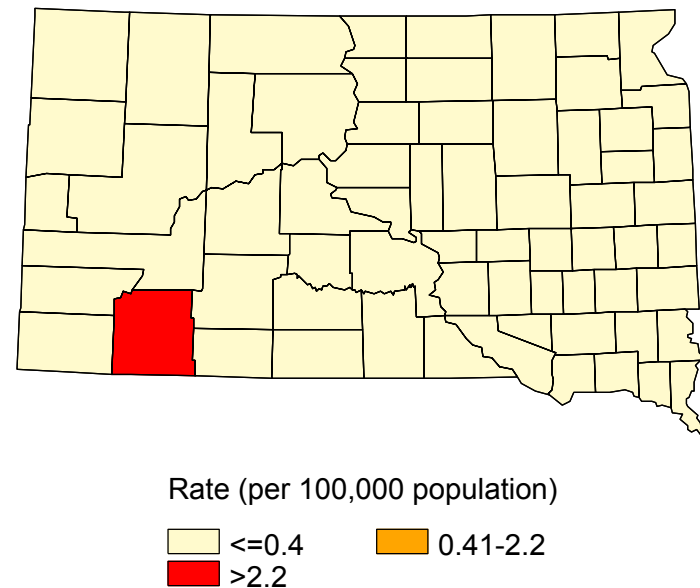
Congenital syphilis

- CASES: South Dakota reported 0 cases in 2008.
- RATES: South Dakota had a rate of 0.0 cases per 100,000 live births compared to the U.S. rate of 10.1 cases per 100,000.

Syphilis: P&S Rates and Congenital Cases, South Dakota, 1999-2008



Total P&S Syphilis Rates by County, South Dakota, 2008



Tennessee, 2008

Primary and secondary syphilis

- CASES: Tennessee reported 413 cases in 2008.
- RATES: Tennessee ranked 6 among 50 states; Washington, DC; and 3 territories with 6.7 cases per 100,000 population compared to the U.S. rate of 4.5 cases per 100,000 population.

Rates of primary and secondary syphilis, by sex

- In Tennessee, the rate among males was 9.8 per 100,000 population compared to the U.S. male rate of 7.6 per 100,000.
- The rate among females was 3.8 per 100,000 compared to the U.S. female rate of 1.5 per 100,000.

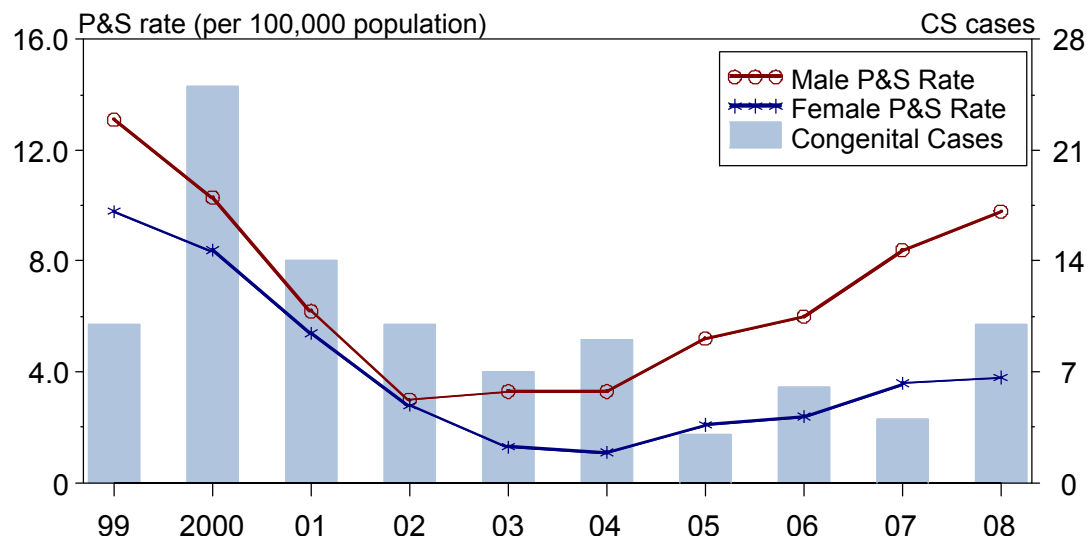
Rates of primary and secondary syphilis, by race/ethnicity

- In Tennessee, the race/ethnicity adjusted rates per 100,000 population were 2.2 among whites, 27.9 among blacks, 7.0 among Hispanics, 3.4 among Asian/Pacific Islanders, and 0.0 among American Indians/Alaska Natives.
- The rate among blacks was 12.7 times that of whites.
- The rate among Hispanics was 3.2 times that of whites.
- The rate among Asian/Pacific Islanders was 1.5 times that of whites.

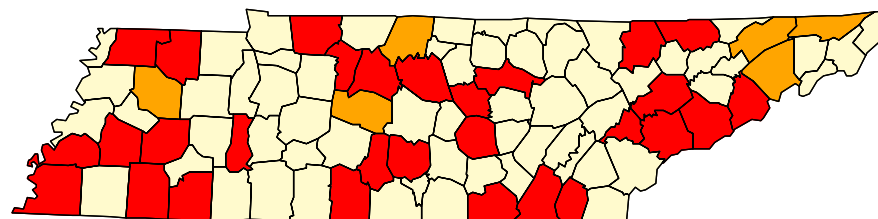
Congenital syphilis

- CASES: Tennessee reported 10 cases in 2008.
- RATES: Tennessee ranked 10 among 26 states; Washington, DC; and 1 territory reporting congenital syphilis cases with a rate of 11.9 cases per 100,000 live births compared to the U.S. rate of 10.1 cases per 100,000.

Syphilis: P&S Rates and Congenital Cases, Tennessee, 1999-2008



Total P&S Syphilis Rates by County, Tennessee, 2008



Rate (per 100,000 population)



Texas, 2008

Primary and secondary syphilis

- CASES: Texas reported 1,405 cases in 2008.
- RATES: Texas ranked 11 among 50 states; Washington, DC; and 3 territories with 5.9 cases per 100,000 population compared to the U.S. rate of 4.5 cases per 100,000 population.

Rates of primary and secondary syphilis, by sex

- In Texas, the rate among males was 8.0 per 100,000 population compared to the U.S. male rate of 7.6 per 100,000.
- The rate among females was 3.8 per 100,000 compared to the U.S. female rate of 1.5 per 100,000.

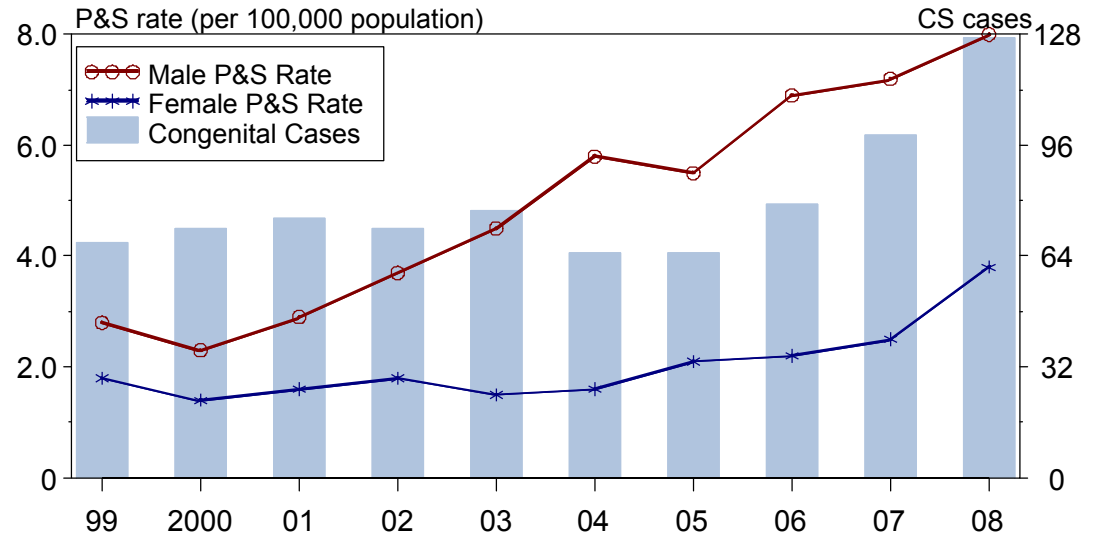
Rates of primary and secondary syphilis, by race/ethnicity

- In Texas, the race/ethnicity adjusted rates per 100,000 population were 2.6 among whites, 28.3 among blacks, 3.5 among Hispanics, 1.2 among Asian/Pacific Islanders, and 1.0 among American Indians/Alaska Natives.
- The rate among blacks was 10.9 times that of whites.
- The rate among Hispanics was 1.3 times that of whites.

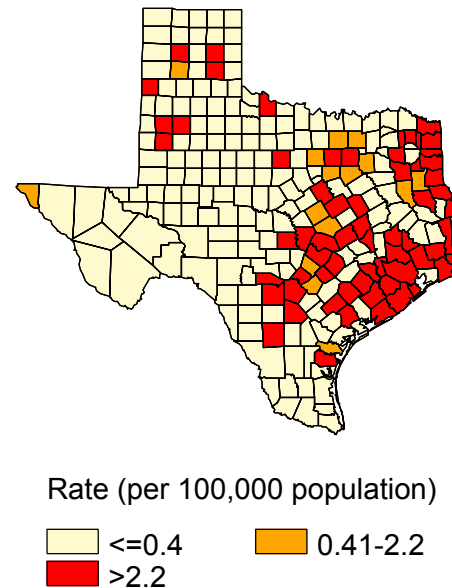
Congenital syphilis

- CASES: Texas reported 127 cases in 2008.
- RATES: Texas ranked 2 among 26 states; Washington, DC; and 1 territory reporting congenital syphilis cases with a rate of 31.8 cases per 100,000 live births compared to the U.S. rate of 10.1 cases per 100,000.

Syphilis: P&S Rates and Congenital Cases, Texas, 1999-2008



Total P&S Syphilis Rates by County, Texas, 2008



Utah, 2008

Primary and secondary syphilis

- CASES: Utah reported 25 cases in 2008.
- RATES: Utah ranked 42 among 50 states; Washington, DC; and 3 territories with 0.9 cases per 100,000 population compared to the U.S. rate of 4.5 cases per 100,000 population.

Rates of primary and secondary syphilis, by sex

- In Utah, the rate among males was 1.8 per 100,000 population compared to the U.S. male rate of 7.6 per 100,000.
- The rate among females was 0.1 per 100,000 compared to the U.S. female rate of 1.5 per 100,000.

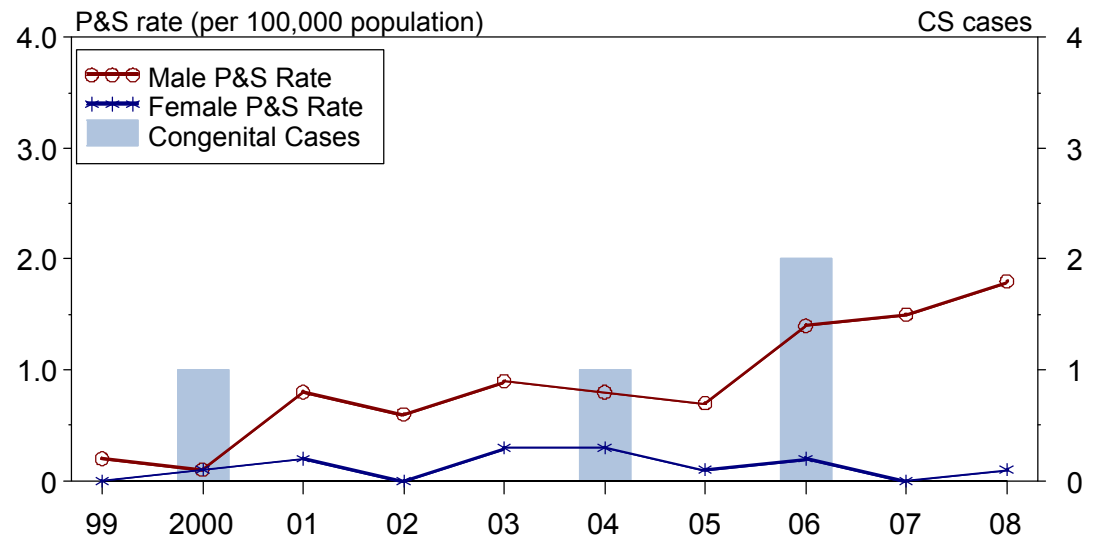
Rates of primary and secondary syphilis, by race/ethnicity

- In Utah, the race/ethnicity adjusted rates per 100,000 population were 0.9 among whites, 6.2 among blacks, 0.7 among Hispanics, 0.0 among Asian/Pacific Islanders, and 6.3 among American Indians/Alaska Natives.
- The rate among blacks was 6.9 times that of whites.
- The rate among American Indians/Alaska Natives was 7 times that of whites.

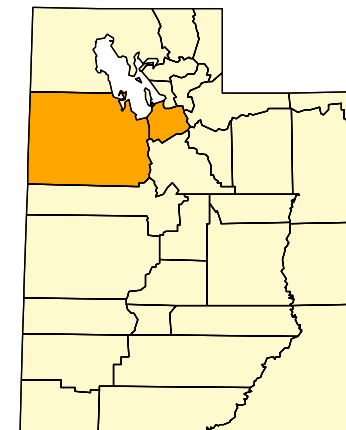
Congenital syphilis

- CASES: Utah reported 0 cases in 2008.
- RATES: Utah had a rate of 0.0 cases per 100,000 live births compared to the U.S. rate of 10.1 cases per 100,000.

Syphilis: P&S Rates and Congenital Cases, Utah, 1999-2008



Total P&S Syphilis Rates by County, Utah, 2008



Rate (per 100,000 population)



Vermont, 2008

Primary and secondary syphilis

- **CASES:** Vermont reported 11 cases in 2008.
- **RATES:** Vermont ranked 36 among 50 states; Washington, DC; and 3 territories with 1.8 cases per 100,000 population compared to the U.S. rate of 4.5 cases per 100,000 population.

Rates of primary and secondary syphilis, by sex

- In Vermont, the rate among males was 3.6 per 100,000 population compared to the U.S. male rate of 7.6 per 100,000.
- The rate among females was 0.0 per 100,000 compared to the U.S. female rate of 1.5 per 100,000.

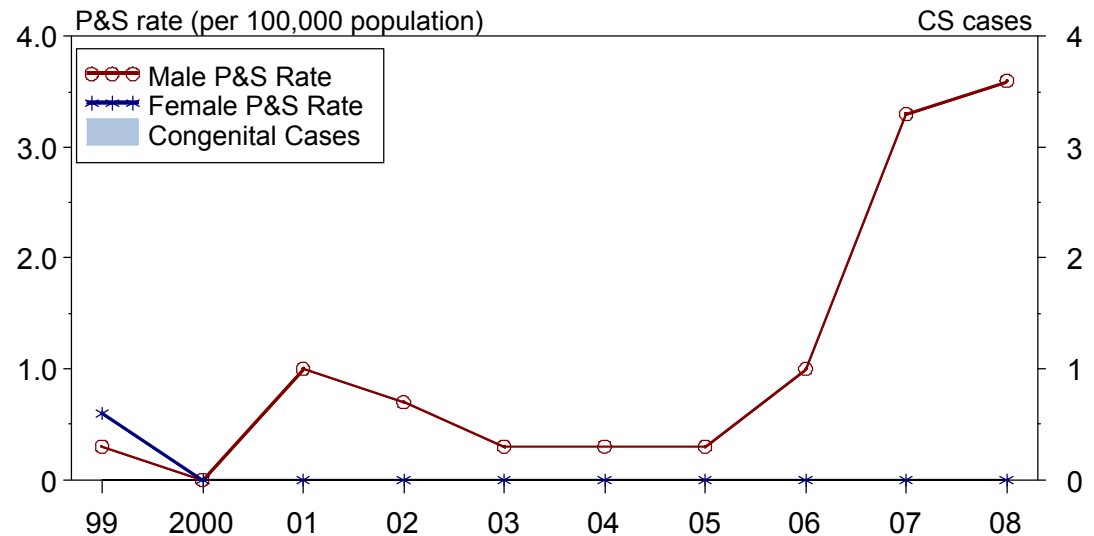
Rates of primary and secondary syphilis, by race/ethnicity

- In Vermont, the race/ethnicity adjusted rates per 100,000 population were 1.5 among whites, 32.5 among blacks, 0.0 among Hispanics, 0.0 among Asian/Pacific Islanders, and 0.0 among American Indians/Alaska Natives.
- The rate among blacks was 21.7 times that of whites.

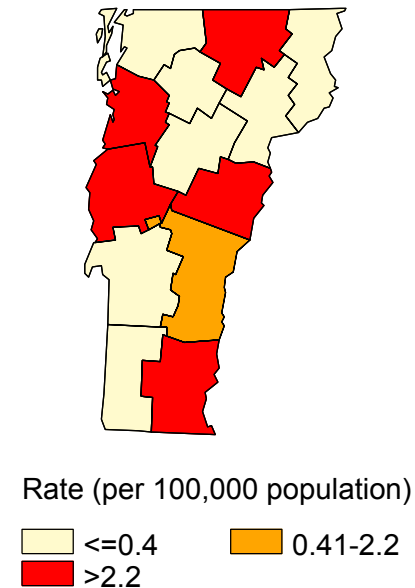
Congenital syphilis

- **CASES:** Vermont reported 0 cases in 2008.
- **RATES:** Vermont had a rate of 0.0 cases per 100,000 live births compared to the U.S. rate of 10.1 cases per 100,000.

Syphilis: P&S Rates and Congenital Cases, Vermont, 1999-2008



Total P&S Syphilis Rates by County, Vermont, 2008



Virgin Islands, 2008

Primary and secondary syphilis

- CASES: Virgin Islands reported 0 cases in 2008.
- RATES: Virgin Islands reported 0 cases per 100,000 population compared to the U.S. rate of 4.5 cases per 100,000 population.

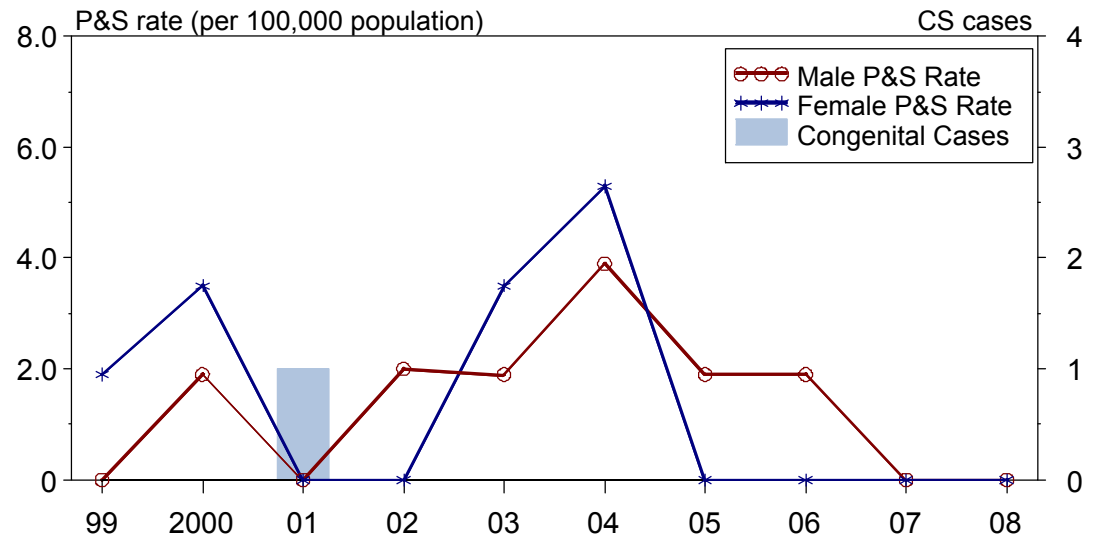
Rates of primary and secondary syphilis, by sex

- In Virgin Islands, the rate among males was 0.0 per 100,000 population compared to the U.S. male rate of 7.6 per 100,000.
- The rate among females was 0.0 per 100,000 compared to the U.S. female rate of 1.5 per 100,000.

Congenital syphilis

- CASES: Virgin Islands reported 0 cases in 2008.
- RATES: Virgin Islands had a rate of 0.0 cases per 100,000 live births compared to the U.S. rate of 10.1 cases per 100,000.

Syphilis: P&S Rates and Congenital Cases, Virgin Islands, 1999-2008



Total P&S Syphilis Rate, Virgin Islands, 2008



Rate (per 100,000 population)



Virginia, 2008

Primary and secondary syphilis

- CASES: Virginia reported 266 cases in 2008.
- RATES: Virginia ranked 18 among 50 states; Washington, DC; and 3 territories with 3.4 cases per 100,000 population compared to the U.S. rate of 4.5 cases per 100,000 population.

Rates of primary and secondary syphilis, by sex

- In Virginia, the rate among males was 6.4 per 100,000 population compared to the U.S. male rate of 7.6 per 100,000.
- The rate among females was 0.6 per 100,000 compared to the U.S. female rate of 1.5 per 100,000.

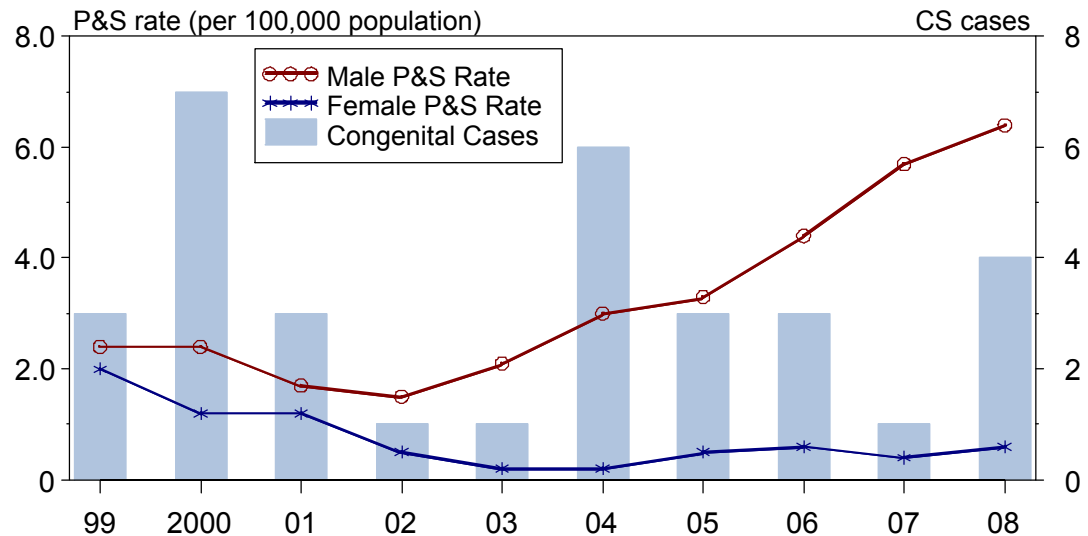
Rates of primary and secondary syphilis, by race/ethnicity

- In Virginia, the race/ethnicity adjusted rates per 100,000 population were 1.1 among whites, 12.6 among blacks, 1.4 among Hispanics, 1.3 among Asian/Pacific Islanders, and 0.0 among American Indians/Alaska Natives.
- The rate among blacks was 11.5 times that of whites.
- The rate among Hispanics was 1.3 times that of whites.
- The rate among Asian/Pacific Islanders was 1.2 times that of whites.

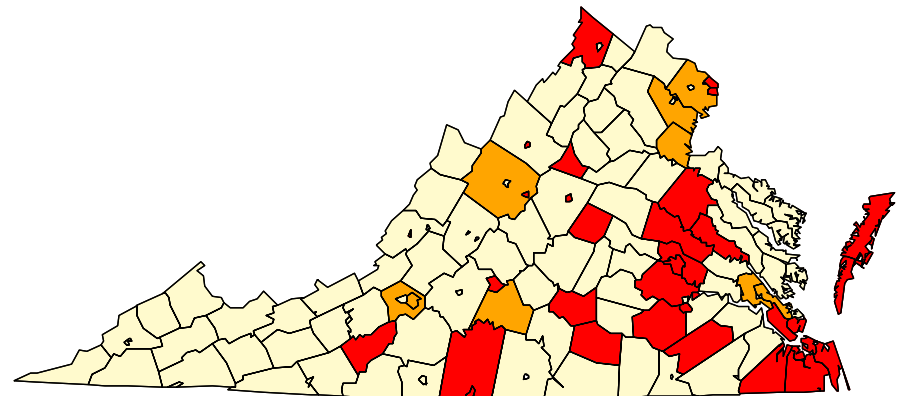
Congenital syphilis

- CASES: Virginia reported 4 cases in 2008.
- RATES: Virginia ranked 23 among 26 states; Washington, DC; and 1 territory reporting congenital syphilis cases with a rate of 3.7 cases per 100,000 live births compared to the U.S. rate of 10.1 cases per 100,000.

Syphilis: P&S Rates and Congenital Cases, Virginia, 1999-2008



Total P&S Syphilis Rates by County, Virginia, 2008



Rate (per 100,000 population)



Washington, 2008

Primary and secondary syphilis

- CASES: Washington reported 181 cases in 2008.
- RATES: Washington ranked 23 among 50 states; Washington, DC; and 3 territories with 2.8 cases per 100,000 population compared to the U.S. rate of 4.5 cases per 100,000 population.

Rates of primary and secondary syphilis, by sex

- In Washington, the rate among males was 5.5 per 100,000 population compared to the U.S. male rate of 7.6 per 100,000.
- The rate among females was 0.2 per 100,000 compared to the U.S. female rate of 1.5 per 100,000.

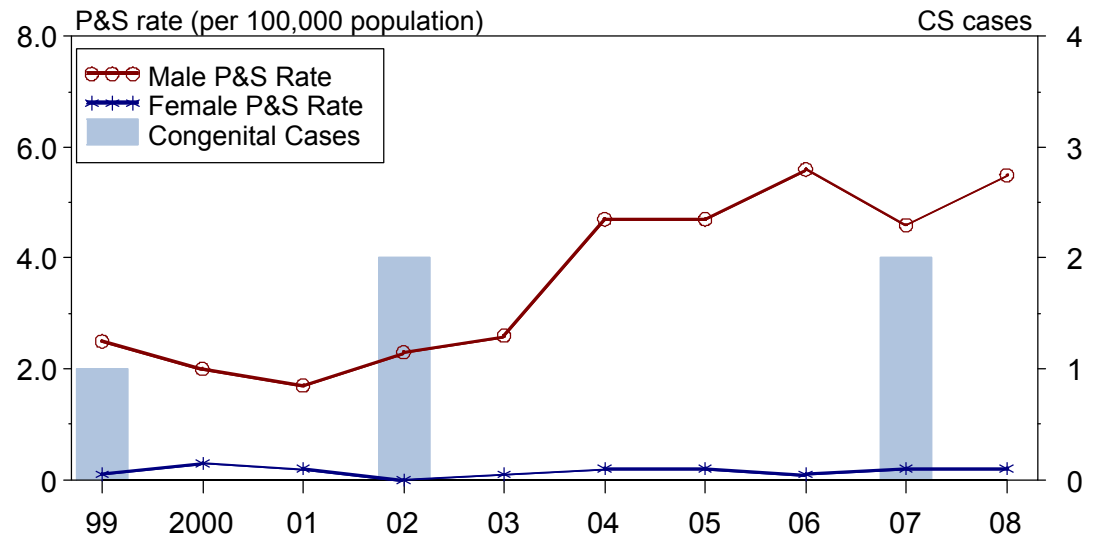
Rates of primary and secondary syphilis, by race/ethnicity

- In Washington, the race/ethnicity adjusted rates per 100,000 population were 2.7 among whites, 10.0 among blacks, 2.5 among Hispanics, 0.8 among Asian/Pacific Islanders, and 1.0 among American Indians/Alaska Natives.
- The rate among blacks was 3.7 times that of whites.

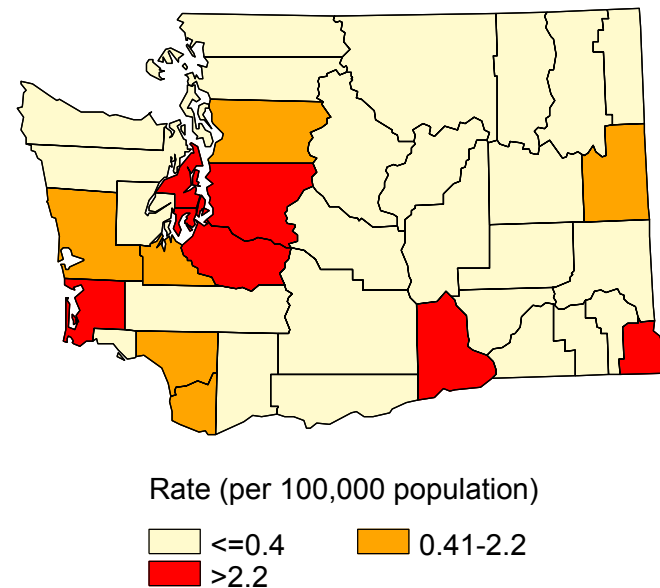
Congenital syphilis

- CASES: Washington reported 0 cases in 2008.
- RATES: Washington had a rate of 0.0 cases per 100,000 live births compared to the U.S. rate of 10.1 cases per 100,000.

Syphilis: P&S Rates and Congenital Cases, Washington, 1999-2008



Total P&S Syphilis Rates by County, Washington, 2008



West Virginia, 2008

Primary and secondary syphilis

- CASES: West Virginia reported 13 cases in 2008.
- RATES: West Virginia ranked 45 among 50 states; Washington, DC; and 3 territories with 0.7 cases per 100,000 population compared to the U.S. rate of 4.5 cases per 100,000 population.

Rates of primary and secondary syphilis, by sex

- In West Virginia, the rate among males was 1.0 per 100,000 population compared to the U.S. male rate of 7.6 per 100,000.
- The rate among females was 0.4 per 100,000 compared to the U.S. female rate of 1.5 per 100,000.

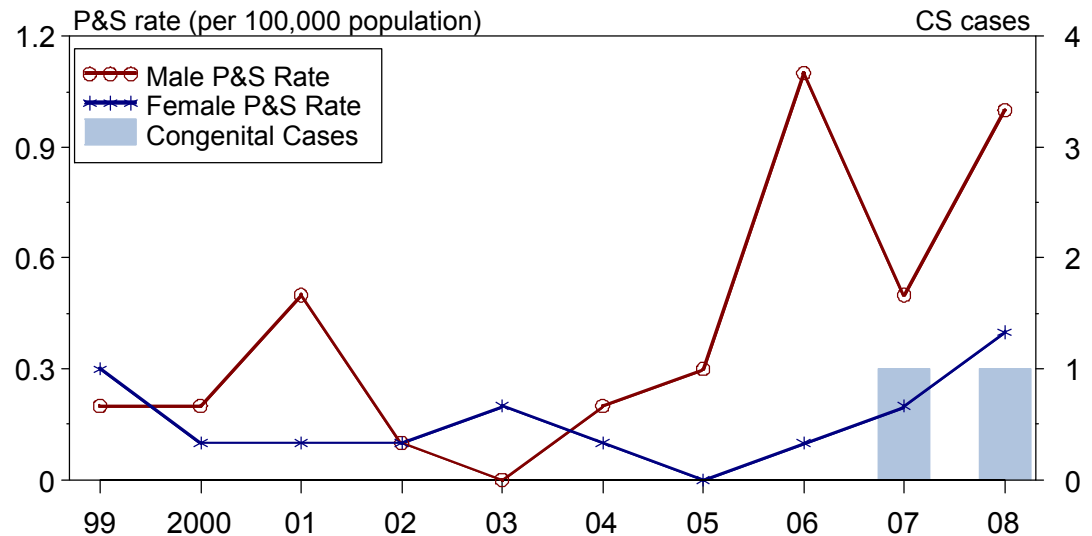
Rates of primary and secondary syphilis, by race/ethnicity

- In West Virginia, the race/ethnicity adjusted rates per 100,000 population were 0.6 among whites, 4.4 among blacks, 0.0 among Hispanics, 0.0 among Asian/Pacific Islanders, and 0.0 among American Indians/Alaska Natives.
- The rate among blacks was 7.3 times that of whites.

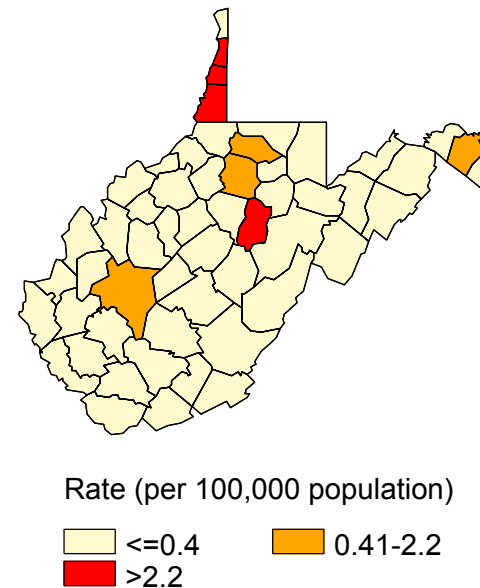
Congenital syphilis

- CASES: West Virginia reported 1 case in 2008.
- RATES: West Virginia ranked 20 among 26 states; Washington, DC; and 1 territory reporting congenital syphilis cases with a rate of 4.8 cases per 100,000 live births compared to the U.S. rate of 10.1 cases per 100,000.

Syphilis: P&S Rates and Congenital Cases, West Virginia, 1999-2008



Total P&S Syphilis Rates by County, West Virginia, 2008



Wisconsin, 2008

Primary and secondary syphilis

- CASES: Wisconsin reported 65 cases in 2008.
- RATES: Wisconsin ranked 39 among 50 states; Washington, DC; and 3 territories with 1.2 cases per 100,000 population compared to the U.S. rate of 4.5 cases per 100,000 population.

Rates of primary and secondary syphilis, by sex

- In Wisconsin, the rate among males was 1.8 per 100,000 population compared to the U.S. male rate of 7.6 per 100,000.
- The rate among females was 0.5 per 100,000 compared to the U.S. female rate of 1.5 per 100,000.

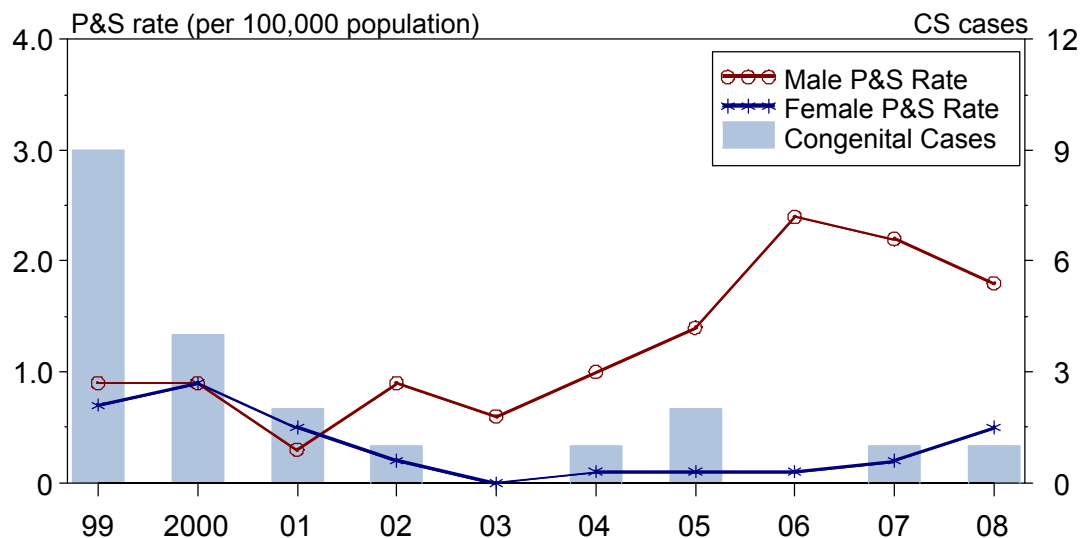
Rates of primary and secondary syphilis, by race/ethnicity

- In Wisconsin, the race/ethnicity adjusted rates per 100,000 population were 0.5 among whites, 10.7 among blacks, 0.7 among Hispanics, 0.8 among Asian/Pacific Islanders, and 0.0 among American Indians/Alaska Natives.
- The rate among blacks was 21.4 times that of whites.
- The rate among Hispanics was 1.4 times that of whites.
- The rate among Asian/Pacific Islanders was 1.6 times that of whites.

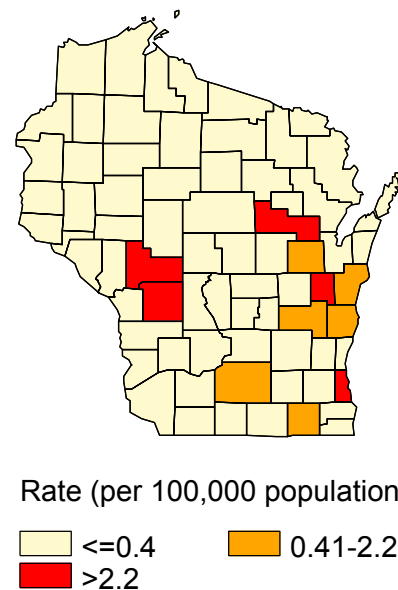
Congenital syphilis

- CASES: Wisconsin reported 1 case in 2008.
- RATES: Wisconsin ranked 29 among 26 states; Washington, DC; and 1 territory reporting congenital syphilis cases with a rate of 1.4 cases per 100,000 live births compared to the U.S. rate of 10.1 cases per 100,000.

Syphilis: P&S Rates and Congenital Cases, Wisconsin, 1999-2008



Total P&S Syphilis Rates by County, Wisconsin, 2008



Wyoming, 2008

Primary and secondary syphilis

- CASES: Wyoming reported 3 cases in 2008.
- RATES: Wyoming ranked 48 among 50 states; Washington, DC; and 3 territories with 0.6 cases per 100,000 population compared to the U.S. rate of 4.5 cases per 100,000 population.

Rates of primary and secondary syphilis, by sex

- In Wyoming, the rate among males was 0.4 per 100,000 population compared to the U.S. male rate of 7.6 per 100,000.
- The rate among females was 0.8 per 100,000 compared to the U.S. female rate of 1.5 per 100,000.

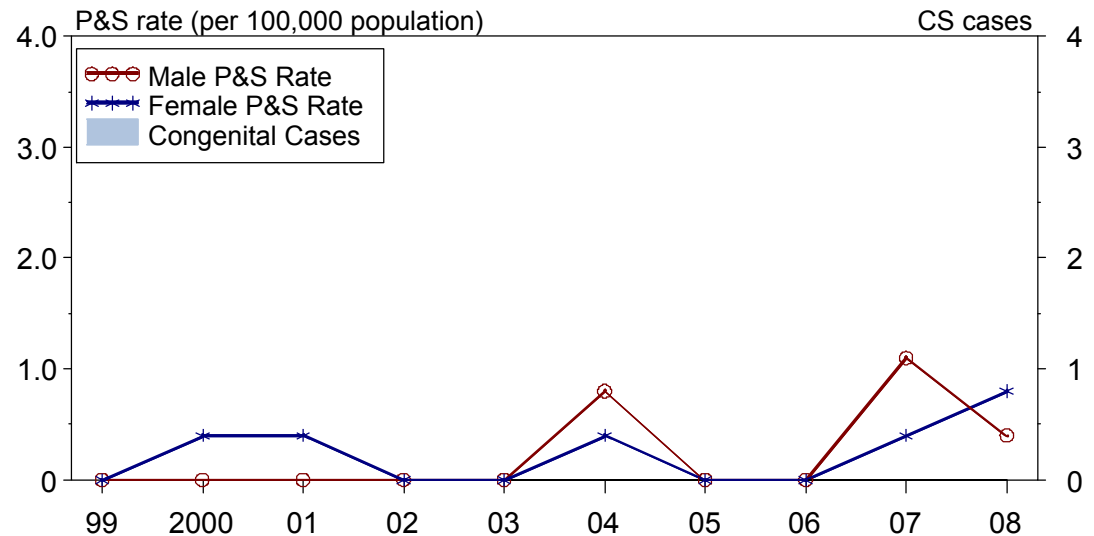
Rates of primary and secondary syphilis, by race/ethnicity

- In Wyoming, the race/ethnicity adjusted rates per 100,000 population were 0.4 among whites, 0.0 among blacks, 0.0 among Hispanics, 0.0 among Asian/Pacific Islanders, and 16.2 among American Indians/Alaska Natives.
- The rate among American Indians/Alaska Natives was 40.5 times that of whites.

Congenital syphilis

- CASES: Wyoming reported 0 cases in 2008.
- RATES: Wyoming had a rate of 0.0 cases per 100,000 live births compared to the U.S. rate of 10.1 cases per 100,000.

Syphilis: P&S Rates and Congenital Cases, Wyoming, 1999-2008



Total P&S Syphilis Rates by County, Wyoming, 2008

