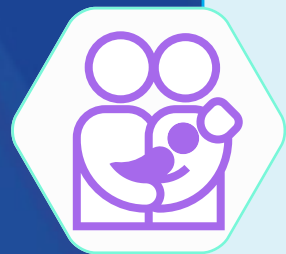


Immunizations to Protect Against Severe RSV



Who Does It Protect?	Type of Product	Who Is It Recommended For?	When Is It Available?
Adults 60 and over	RSV vaccine	Adults ages 60-74 who are at increased risk of severe RSV AND Everyone ages 75 and older	Available any time, but best time to get vaccinated is late summer and early fall
Babies	RSV antibody (nirsevimab) given to baby	All infants whose mother did not receive RSV vaccine during pregnancy, and some children ages 8-19 months who are at increased risk for severe RSV	October through March*
Babies	OR RSV vaccine (Pfizer's ABRYSVO) given to mother during pregnancy	All pregnant women during weeks 32-36 of their pregnancy	September through January

www.cdc.gov/rsv

**Recommended timing of administration in most of the continental United States. Recommended timing of administration may differ in some areas, based on state, local, or territorial guidance.*

