



CDC-RFA-OT21-2103 National Initiative to Address COVID-19 Health Disparities Among Populations at High-Risk and Underserved, Including Racial and Ethnic Minority Populations and Rural Communities

Performance Measures and Logic Model

Nancy Habarta, MPH and Theresa Armstead, PhD

2103 Evaluation Team

Performance Development, Evaluation, and Training Branch

Division of Performance Improvement and Field Services

September 2021

Performance Monitoring & Evaluation

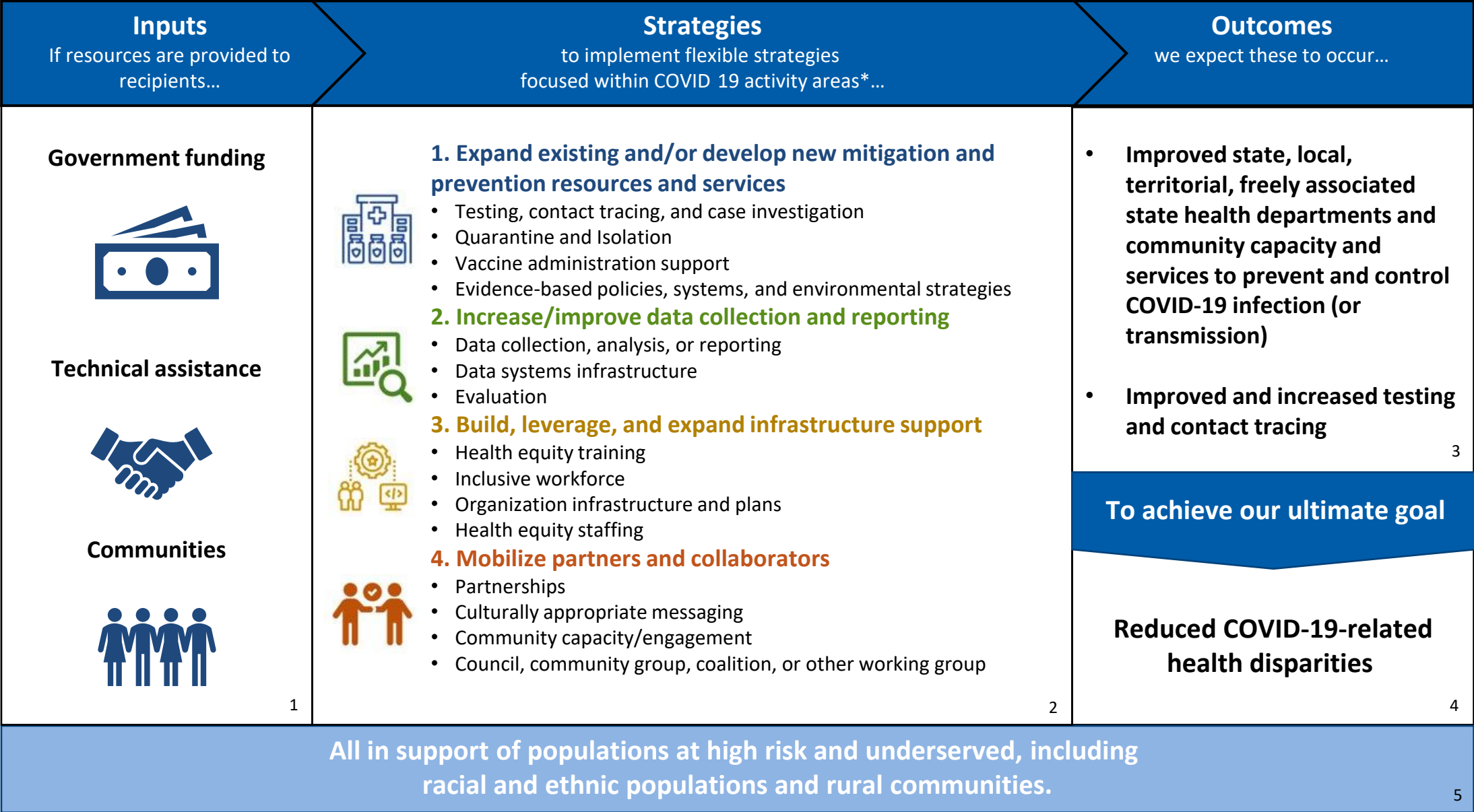
■ Purposes

- Monitor recipient use of funds and progress
- Inform CDC's management of the grant
- Understand the extent to which program outcomes are being achieved, and how program strategies and contextual factors contribute to these outcomes
- Contribute to the evidence base for effective health equity practice

■ Priority Evaluation Question

- To what extent do grant recipients improve capacity and services to address COVID-19 health disparities and advance health equity among populations at higher risk and that are underserved, including racial and ethnic minority groups and people living in rural communities?

OT21-2103 Logic Model



*Activity areas are based on preliminary work plans submitted by recipients



Poll: Do you see your jurisdiction's work within this logic model?

Performance Measures

- **Intended to be used by CDC and recipients to**
 - Monitor implementation and progress toward achieving intended outcomes
 - Demonstrate accountability to interested parties by showing how funds are being allocated
 - Maximize learning opportunities associated with the implementation and impacts of this grant
- **Other methods of collecting information will also be used to assess progress**
 - Work Plan updates
 - Success stories
 - Enhanced evaluation projects





Reporting

- Recipients will report on measures that align with their selected strategies, and all will report on 4.1 – Partnerships
- Measures will be reported quarterly in REDCap
- Recipients will set targets in initial reporting cycle
- Data validation with CDC

	Jun-Jul 2021 (60 days)	Jul-Sep 2021	Oct-Dec 2021	Jan-Mar 2022	Apr-Jun 2022	Jul-Sep 2022	Oct-Dec 2022	Jan-Mar 2023	Apr-Jun 2023
Quarterly Performance / Expenditure Report	Due 30 days after each fiscal quarter. <i>(in REDCap)</i>	 Nov 1, 2021*	 Jan 31, 2022	 May 2, 2022*	 Aug 1, 2022*	 Oct 31, 2022	 Jan 31, 2023	 May 1, 2023	 Jul 31, 2023

*When the end of a quarter falls on a weekend, the corresponding report will be due the next business day.

Performance Measures at a Glance

OT21-2103 Strategy	Corresponding Performance Measure(s)
 <p>Strategy 1: Expand existing and/or develop new mitigation and prevention resources and services to reduce COVID-19 related disparities among populations at higher risk and that are underserved.</p>	<p>Measure 1.1: Number of COVID-19 mitigation and prevention resources and services delivered in support of populations that are underserved and disproportionately affected by type</p> <p>Measure 1.2: Number of COVID-19/SARS-CoV-2 tests completed by test type, results and race and ethnicity</p> <p>Measure 1.3: Caseload, number of cases per case investigator, and number of contacts per contact tracer during the data collection period</p>
 <p>Strategy 2: Increase/improve data collection and reporting for populations experiencing a disproportionate burden of COVID-19 infection, severe illness, and death to guide the response to the COVID-19 pandemic.</p>	<p>Measure 2.1: Number of improvements to data collection, quality, and reporting capacity for recipients, partners, and agencies related to COVID-19 health disparities and inequities</p>
 <p>Strategy 3: Build, leverage and expand infrastructure support for COVID-19 prevention and control among populations that are at higher risk and underserved</p>	<p>Measure 3.1: Number of improvements to infrastructure to address COVID-19 health disparities and inequities</p>
 <p>Strategy 4: Mobilize partners and collaborators to advance health equity and address social determinants of health as they relate to COVID-19 health disparities among populations at higher risk and that are underserved.</p>	<p>Measure 4.1: Number and proportion of new, expanded, or existing partnerships mobilized to address COVID-19 health disparities and inequities</p>



Poll: I feel confident in my jurisdiction's ability to report on the OT21-2103 performance measures.

Measure 1.1:

Number of COVID-19 mitigation and prevention resources and services delivered in support of populations that are underserved and disproportionately affected by type

- **Number of:** types of COVID-19 mitigation and prevention resources and services delivered in support of populations that are underserved and disproportionately affected
- **Type:** categorical description of COVID-19 mitigation and prevention resources and services delivered in support of underserved and disproportionately affected populations
- Request to report at the lowest geographical level

Measure 1.2:
Number of COVID-19/SARS-CoV-2 tests completed by test type, results, and race and ethnicity

- **Number of:**
 - COVID-19/SARS-CoV-2 molecular (+positive) and serology tests conducted
 - Individuals planned to be tested
- Report by racial and ethnic populations
- Aligns with ELC measure E.2
 - Optional for non-ELC recipients for first reporting cycle
- Request to report at the lowest geographical level

Measure 1.3:

Caseload, number of cases per case investigator, and number of contacts per contact tracer during the data collection period

- **Number of:**
 - Cases reported to health department (confirmed and, if possible, probable)
 - Cases sent to case investigation team
 - Contacts identified through case investigators
 - Contact tracers
- Report by racial and ethnic populations
- Aligns with ELC measure E.17
 - Optional for non-ELC recipients for first reporting cycle
- Request to report at the lowest geographical level

Measure 2.1:

Number of improvements to data collection, quality, and reporting capacity for recipients, partners, and agencies related to COVID-19 health disparities and inequities

- **Number of:**
 - Improvements to data collection and reporting
 - Improvements to data quality
- Within recipient organization or related partner/agency organization
- All data systems and staffing related to data infrastructure improvements

Measure 3.1:

Number of improvements to infrastructure to address COVID-19 health disparities and inequities

- **Number of:**
 - Improvements to infrastructure within recipient organization
 - Improvements to infrastructure across relevant partner or agency organizations
- Excludes data infrastructure
- Can include newly developed, improved upon, or maintained infrastructure

Measure 4.1:

Number and proportion of new, expanded, or existing partnerships mobilized to address COVID-19 health disparities and inequities

- **Number of:**
 - New partnerships mobilized
 - Existing partnerships mobilized
 - Expanded partnerships mobilized
 - Total partnerships mobilized
- Proportion of each type of partnership auto-calculated in REDCap
- All recipients report
- Funded and unfunded partnerships included

Q&A



For additional information, contact us at
2103evaluation@cdc.gov

Nancy Habarta – 2103 Evaluation Team Lead

Theresa Armstead – 2103 Evaluation Project Manager

Hannah McMillan – 2103 Evaluator

Kimberly Castelin – 2103 Evaluator

Kai Young – OMHHE Evaluator

For more information, contact CDC
1-800-CDC-INFO (232-4636)
TTY: 1-888-232-6348 www.cdc.gov

The findings and conclusions in this report are those of the authors and do not necessarily represent the official position of the Centers for Disease Control and Prevention.

