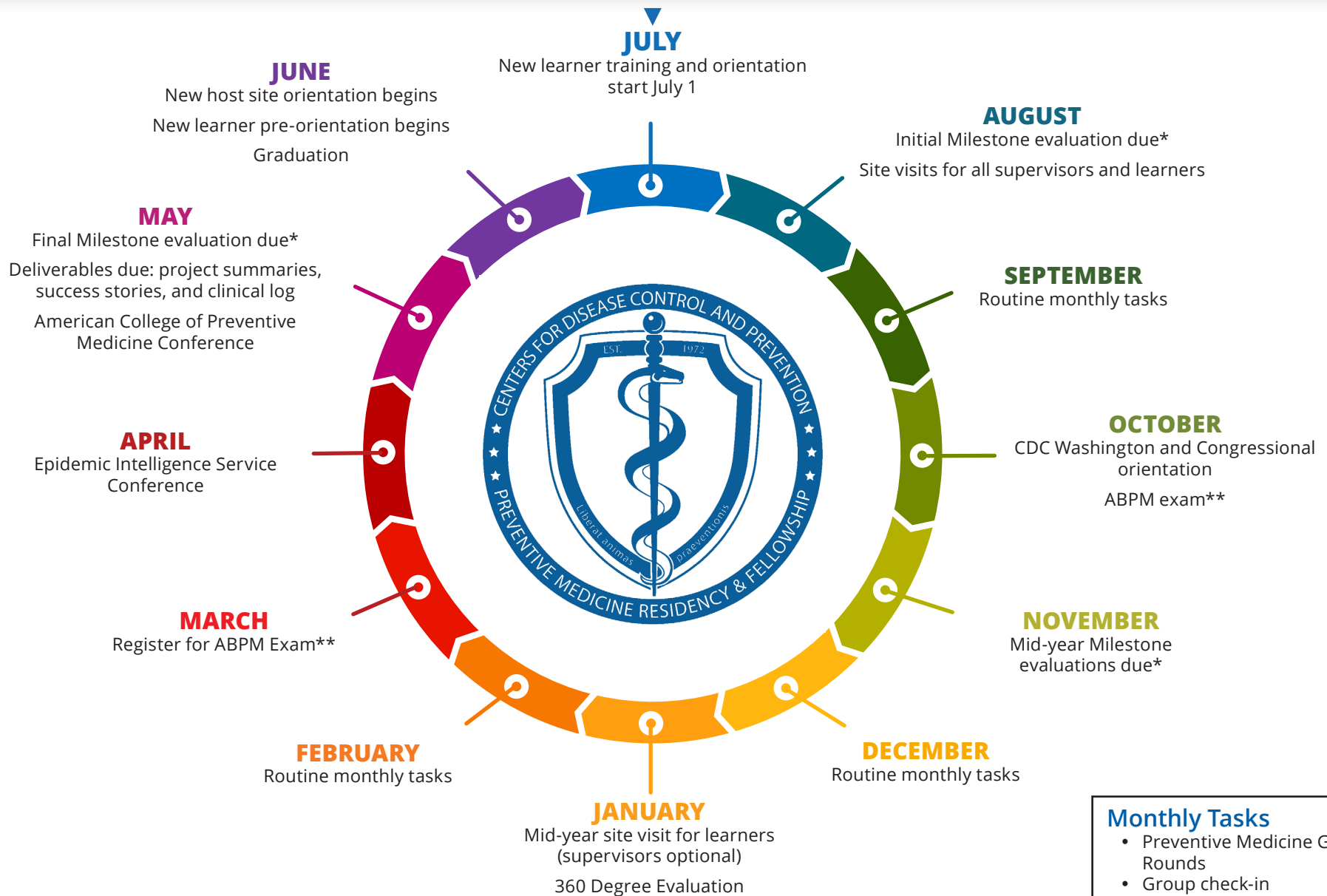


Preventive Medicine Residency and Fellowship (PMR/F)

Practicum Year



- Monthly Tasks**
- Preventive Medicine Grand Rounds
 - Group check-in
 - Direct patient care, 1 day per week**



*Learner develops ▶ Supervisor reviews ▶ Program director reviews ▶ Clinical competency committee reviews
** Residents seeking ABPM certification only