



# Basics of the Incident Management System

---

Insert seal  
or logo here

**PRESENTER'S NAME HERE**





Insert seal  
or logo here

# Goals of This Lecture

---

- Learn basic concepts of Incident Command / Unified Command System organization
- Understand ICS terminology
- Discuss the implementation of ICS/UCS during a bioterrorism incident



Insert seal  
or logo here

# Incident Command System (ICS)

---

- Model tool for the command, control, and coordination of resources
- May be used for both emergent and non-emergent incidents
- Management tool consisting of procedures for organizing personnel, facilities, equipment, and communications at the scene of an emergency
- Has a flexible design that allows for many jurisdictions and many agencies

Insert seal  
or logo here

# Application

---

- Can be used for any incident:
  - Emergent: fire, HAZMAT, act of terrorism, natural disaster
  - Non-emergent: parade, sporting event, political rally
- Can be used for small and large events
- Flexible: Can expand and contract with evolution of the event

Insert seal  
or logo here

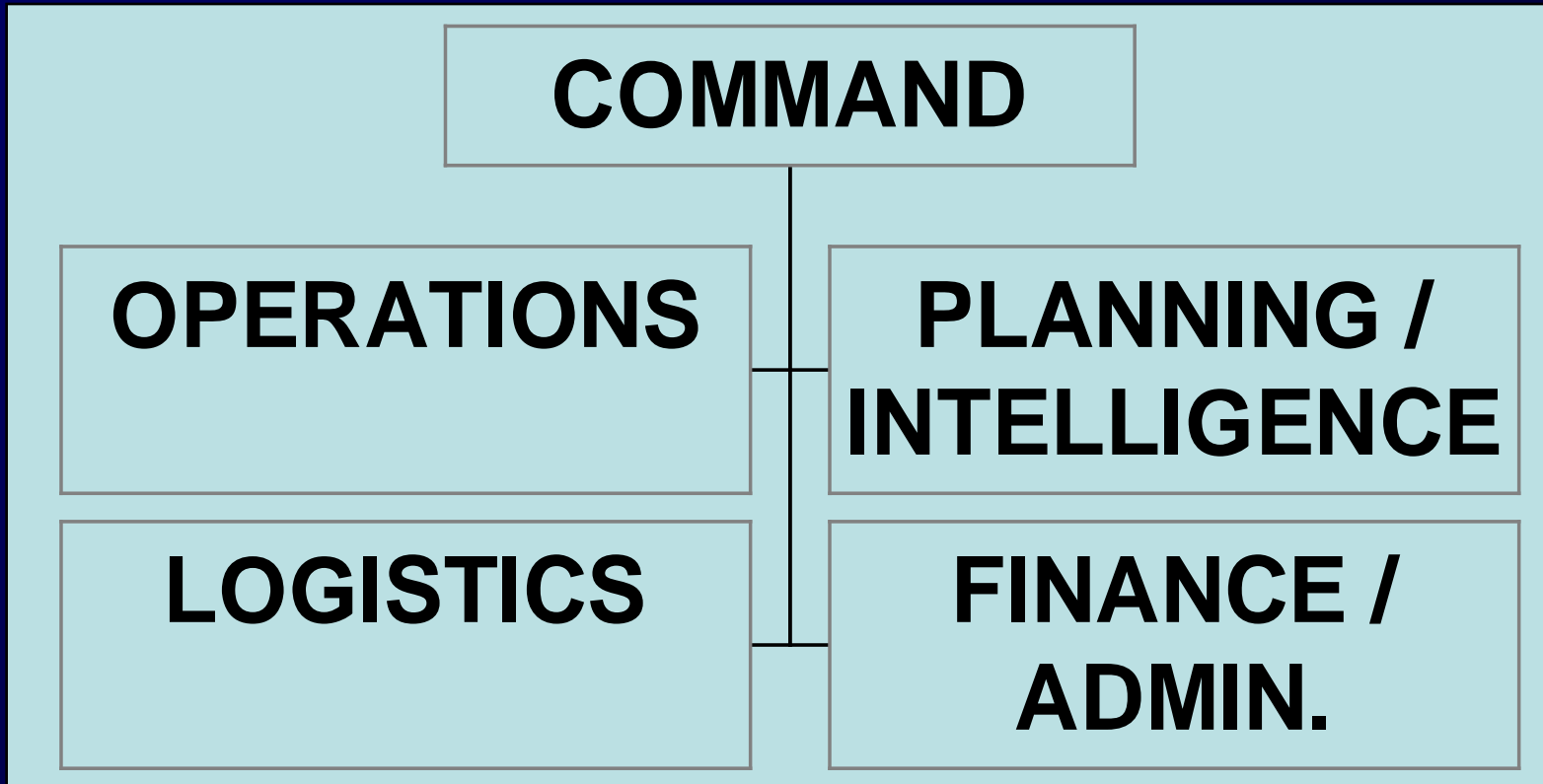
# ICS Features

---

- ICS organization
- Incident facilities
- Incident action plan
- Span of control
- Common responsibilities

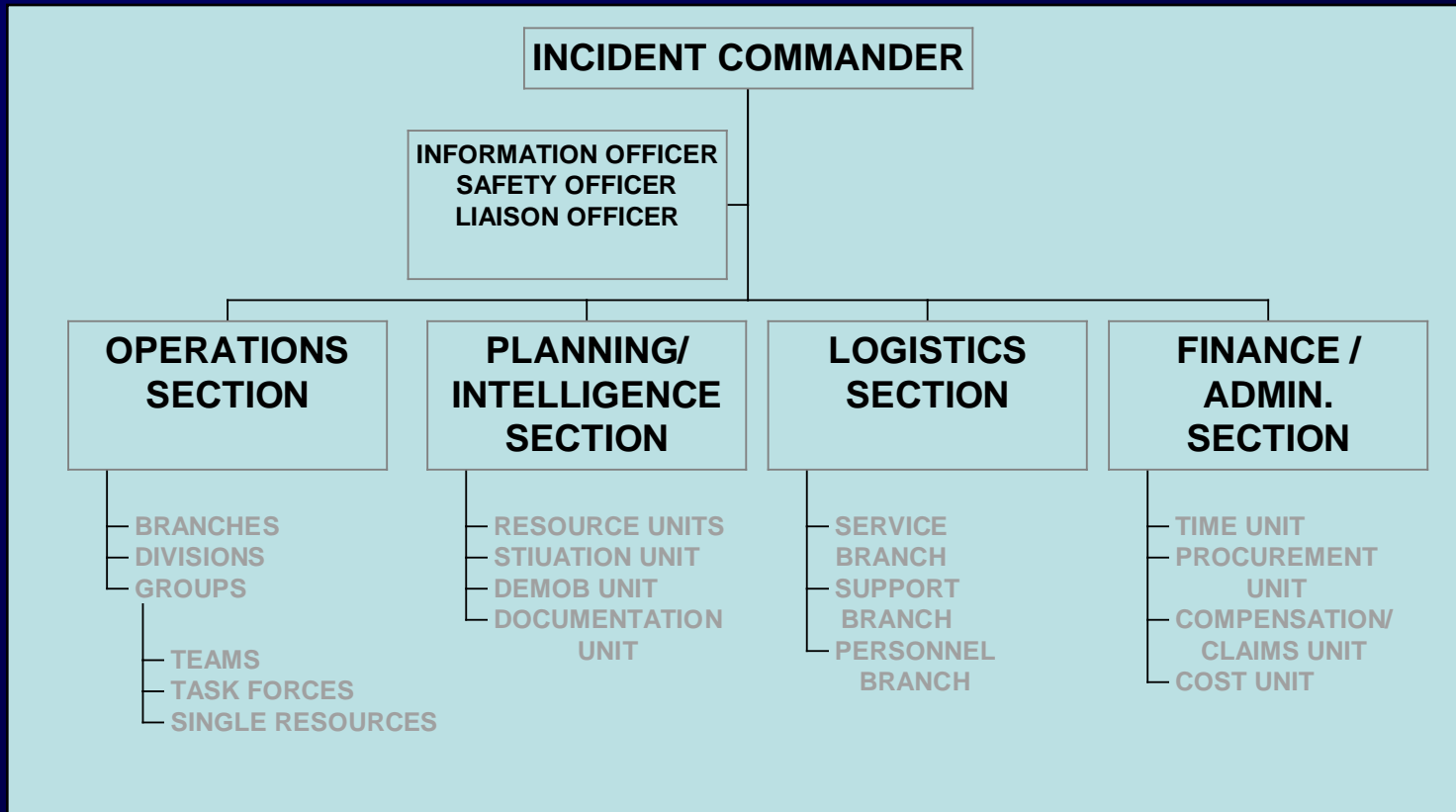
Insert seal  
or logo here

# General ICS Organization



Insert seal  
or logo here

# Detailed ICS Organization



Insert seal  
or logo here

# Incident Commander

---

- In charge at the incident
- Assigned by responsible jurisdiction or agency
- May have one or more deputy incident commanders
- May assign personnel for command staff & general staff
  - Command staff includes Liaison Officer, Safety Officer, and Information Officer



Insert seal  
or logo here

# The Command Staff



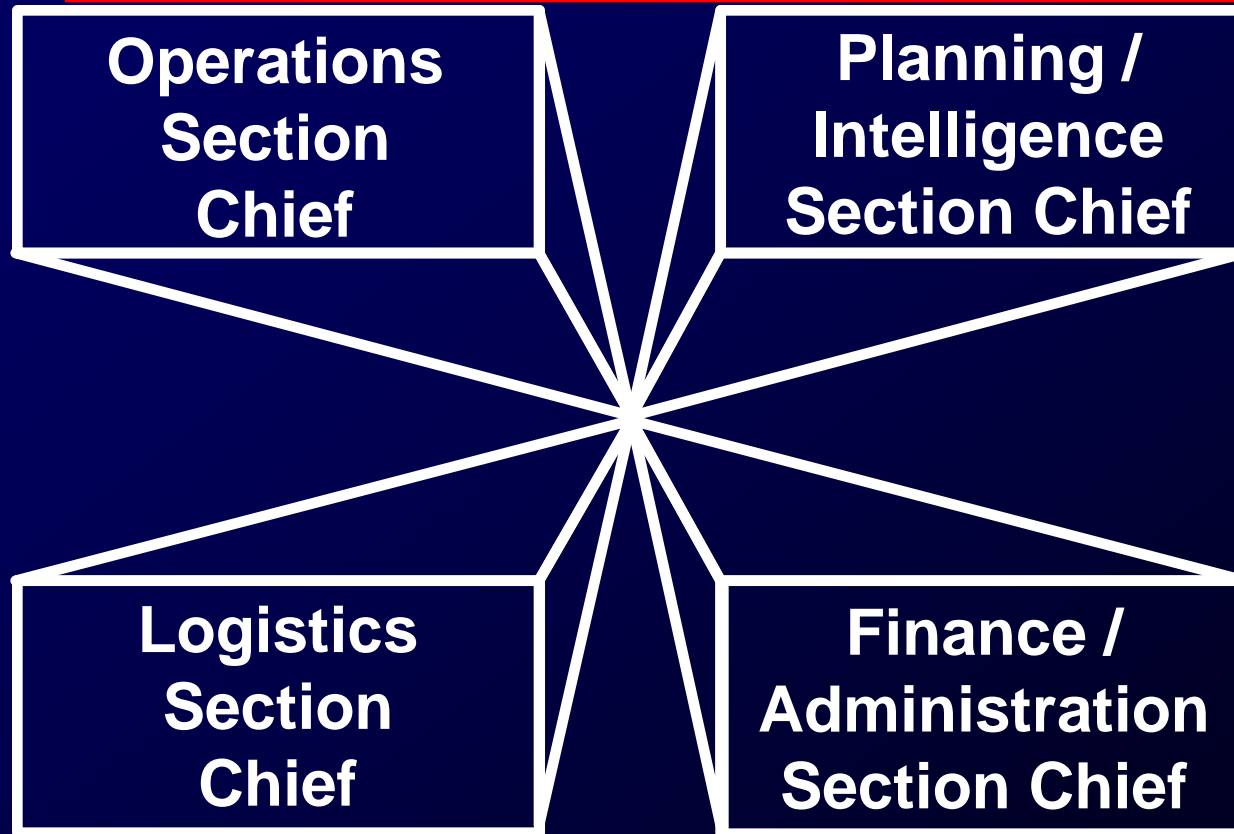
**Information  
Officer**

**Safety  
Officer**

**Liaison  
Officer**

Insert seal  
or logo here

# General Staff



Insert seal  
or logo here

# Operations Section Chief

---

- Develop & manage the operations section
- Accomplish the incident objectives
- Only one person assigned to this role

Insert seal  
or logo here

# Planning Section Chief

---

- Collection, evaluation, dissemination, and use of information about the development of the incident and the status of resources
- Responsible for creating action plan

Insert seal  
or logo here

# Logistics Section Chief

---

- Provides all support needs
- Orders all resources from off-incident locations
- Responsible to acquire
  - Facilities
  - Services
  - Personnel
  - Equipment
  - Materials

Insert seal  
or logo here

# Finance Section Chief

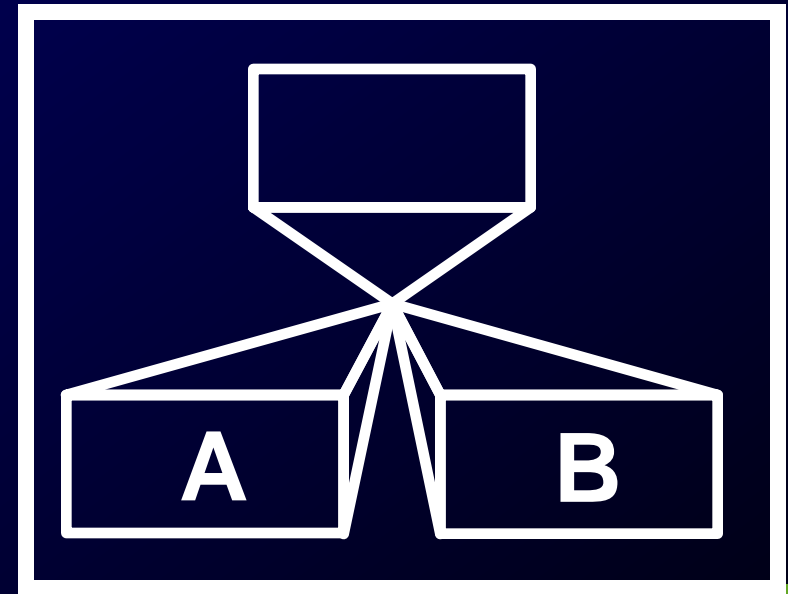
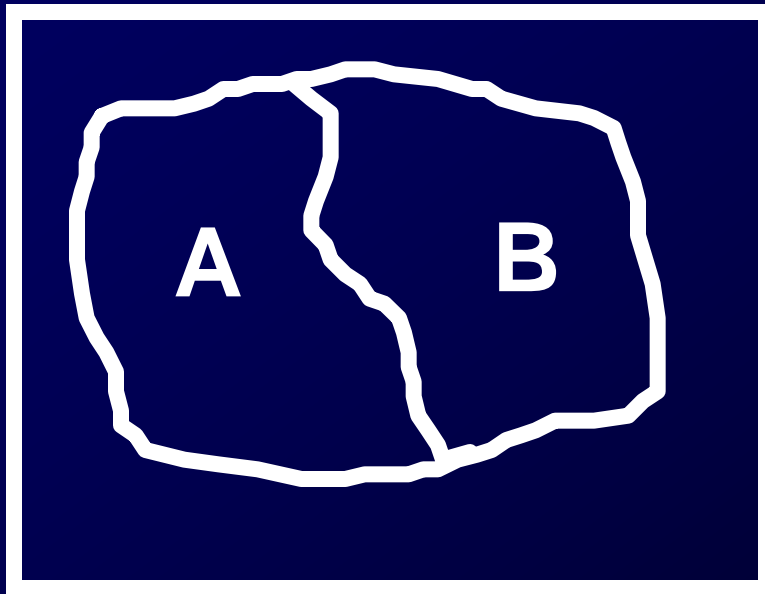
---

- Responsible for tracking all incident costs and evaluating the financial considerations of the incident
  - Time units
  - Procurement unit
  - Compensation/claims unit
  - Cost unit

Insert seal  
or logo here

# Divisions

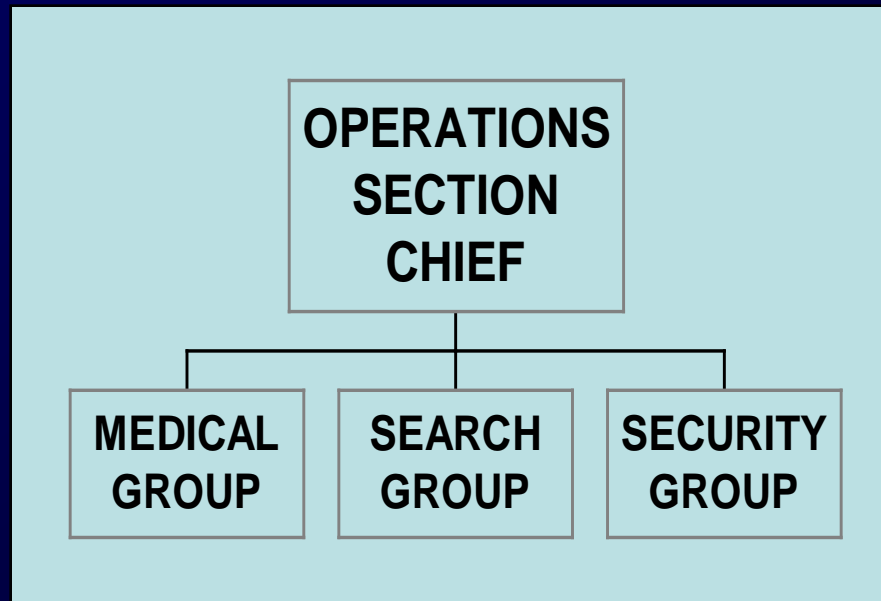
## *Divide An Incident Geographically*



Insert seal  
or logo here

# Groups

- Pool specialized resource teams
- Establish functional areas of operation





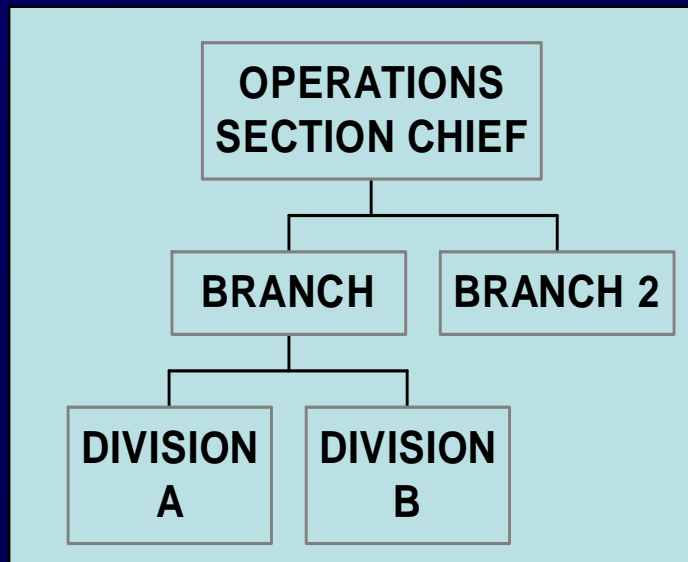
Insert seal  
or logo here

# Branches

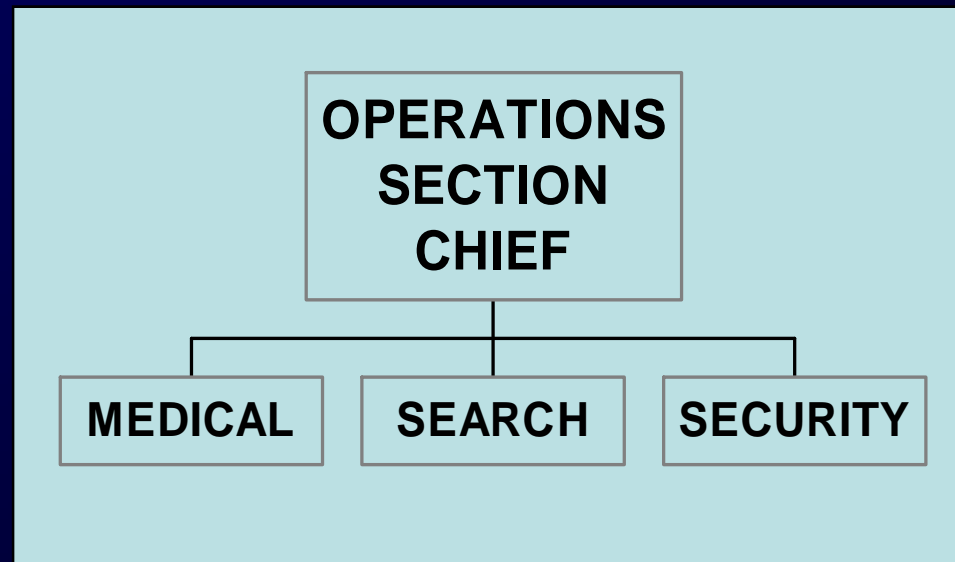
Maintain Span of Control of Groups and Divisions

*There Are Two Types Of Branches*

## *Geographic Branches*



## *Functional Branches*



Insert seal  
or logo here

# Incident Facilities

---

- Incident command post
- Staging areas

Insert seal  
or logo here

# Incident Action Plan

---

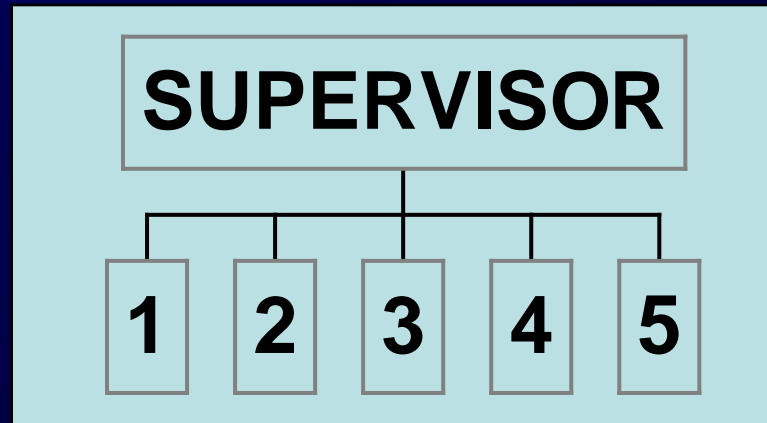
- Can be oral or written
- Includes measurable tactical objectives
- List of activated organizational elements
- Assignments to accomplish the objectives
- Supporting information
- Inform all incident supervisory personnel

Insert seal  
or logo here

# Span of Control

---

- Adequate span of control is very important
- Optimum span of control is one to five



Insert seal  
or logo here

# Common Responsibilities for All Incident Personnel

---

- Receive assignment from your agency
- Bring any specialized supplies or equipment
- Follow check-in procedures
- Obtain a briefing upon arrival

Insert seal  
or logo here

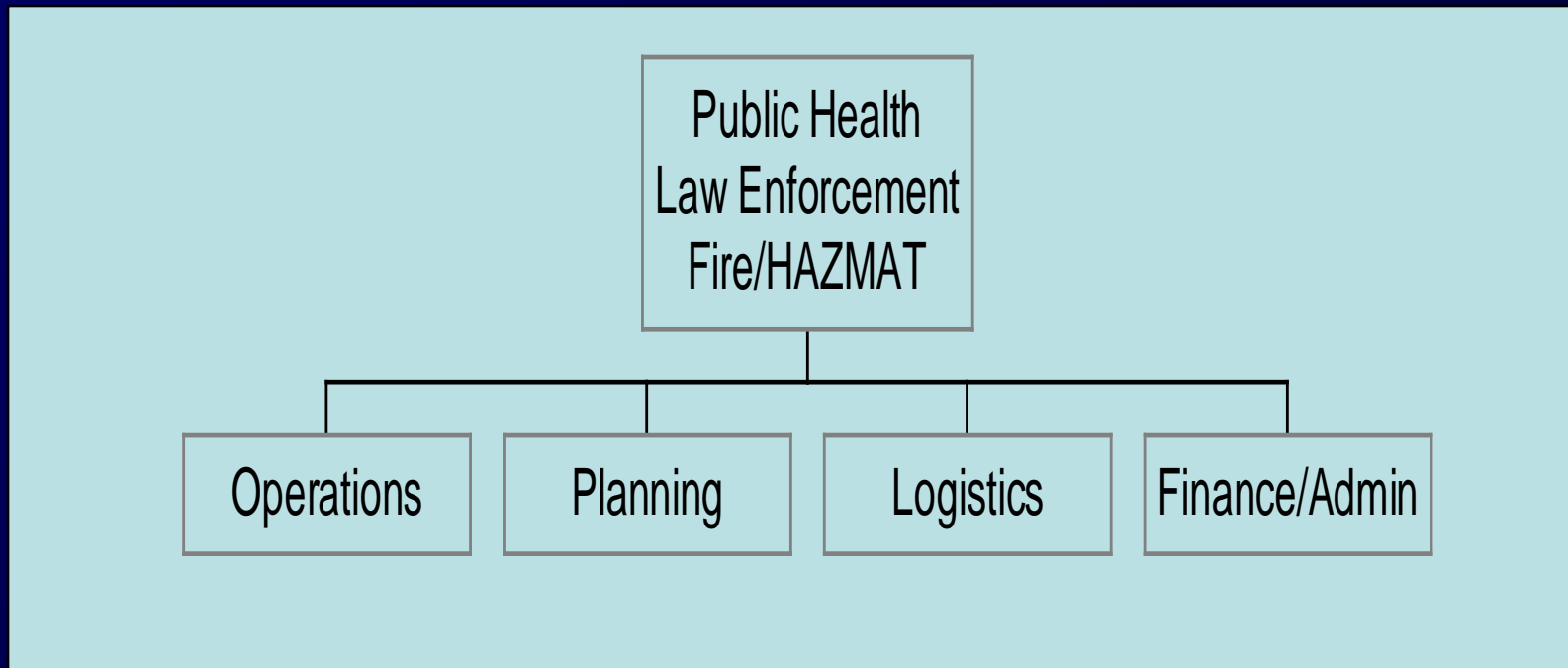
# Unified Command System (UCS)

---

- Multi-jurisdictional and/or multi-agency responses
- Multi-agency command post established integrating the various agencies/jurisdictions
- UCS provides the structure for the federal, state and local on-scene coordinators to work effectively and efficiently during a response

Insert seal  
or logo here

# UCS Structure



Insert seal  
or logo here

# Joint Information Center (JIC)

---

- Established by the lead federal agency as a focal point for the coordination and provision of information to the public and media concerning the Federal response to the emergency
- It may be established in the same location as the Joint Operations Center (JOC) or located at an on-scene location in coordination with State and local agencies
- In a bioterrorism event: coordinate info from LE & PH to speak with one voice



Insert seal  
or logo here

# Joint Information Center (JIC)

---

- The following elements should be represented at the JIC:
  - FBI Public Information Officer and staff
  - FEMA Public Information Officer and staff
  - Other Federal agency Public Information Officer and staff
  - State and local Public Information Officers
  - In a bioterrorism event: CDC / Local PH PIOs coordinate with LE and other agencies

Insert seal  
or logo here

# Joint Operations Center (JOC)

---

- The organizational structure to implement the Federal response at the field level during a terrorist incident
- Established by the FBI under the operational control of the Federal on-scene commander
- Established to ensure inter-incident coordination and the organize multiple agencies and jurisdictions within an overall command and coordination structure



Insert seal  
or logo here

# Joint Operations Center (JOC)

---

- Acts as the focal point for the strategic management and direction of on-site activities, identification of State and local requirements and priorities, and coordination of the Federal response
- Local FBI field office will activate a Crisis Management Team to establish the JOC

Insert seal  
or logo here

# Joint Operations Center (JOC)

---

- Includes the following functional groups:
  - Command
  - Operations
  - Admin/Logistics
  - Consequence Management
- Representation within the JOC includes officials from local, state, and Federal agencies with specific roles in crisis and consequence management
- In a bioterrorism event: PH would have a significant role, coordinating with FBI and other response agencies

Insert seal  
or logo here

# Joint Terrorism Task Force (JTTF)

---

- Brings together Federal as well as State and local law enforcement officers into a task force environment for the purposes of combating terrorism
- These agents and officers complement each other by bringing together special skills and knowledge about local violations to better target terrorism



# Questions?

Insert seal  
or logo here

---

