

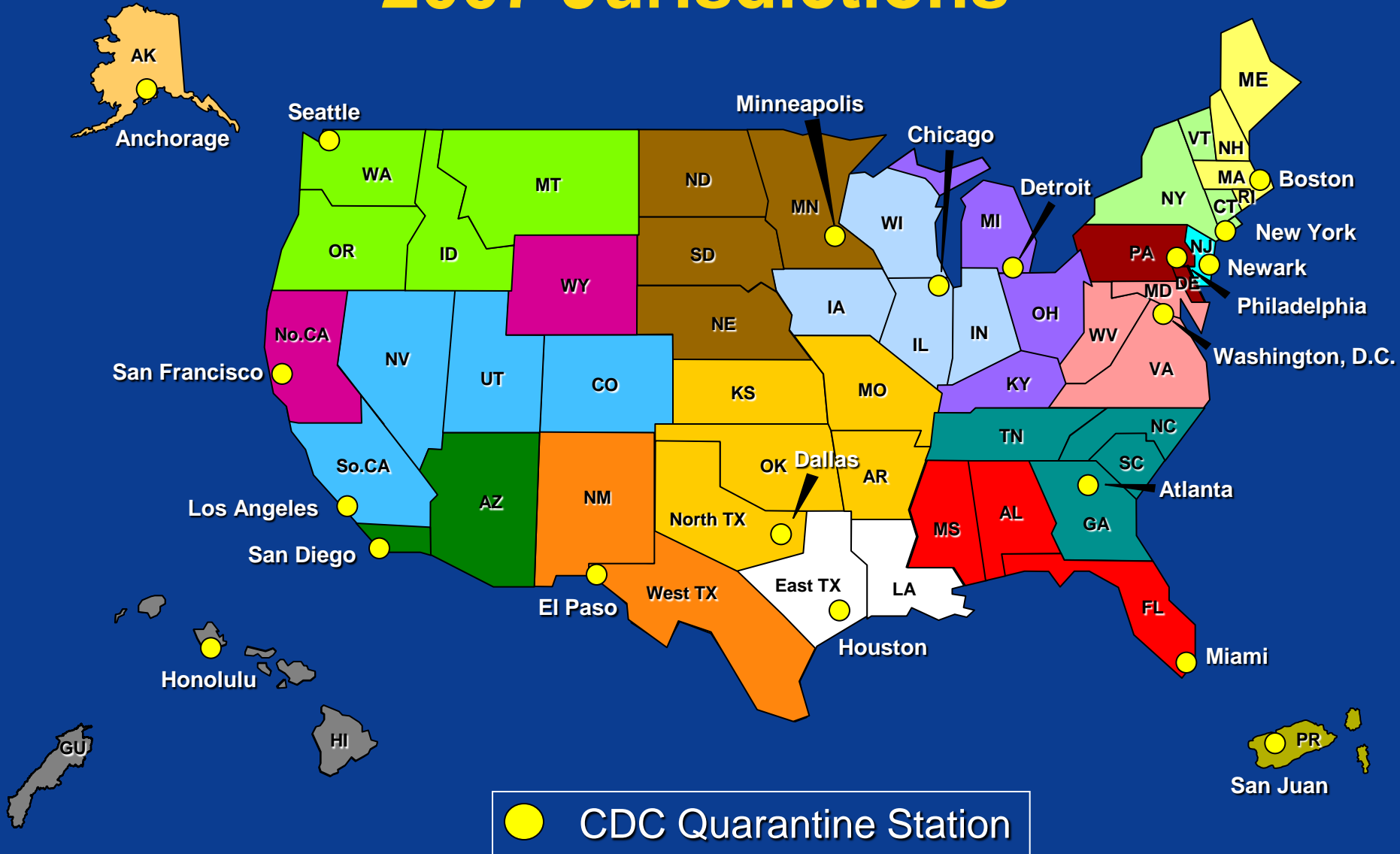
# Surveillance and Response to Imported Infectious Disease

Gabe Palumbo, MBA, MPH  
Officer in Charge  
CDC Detroit Quarantine Station

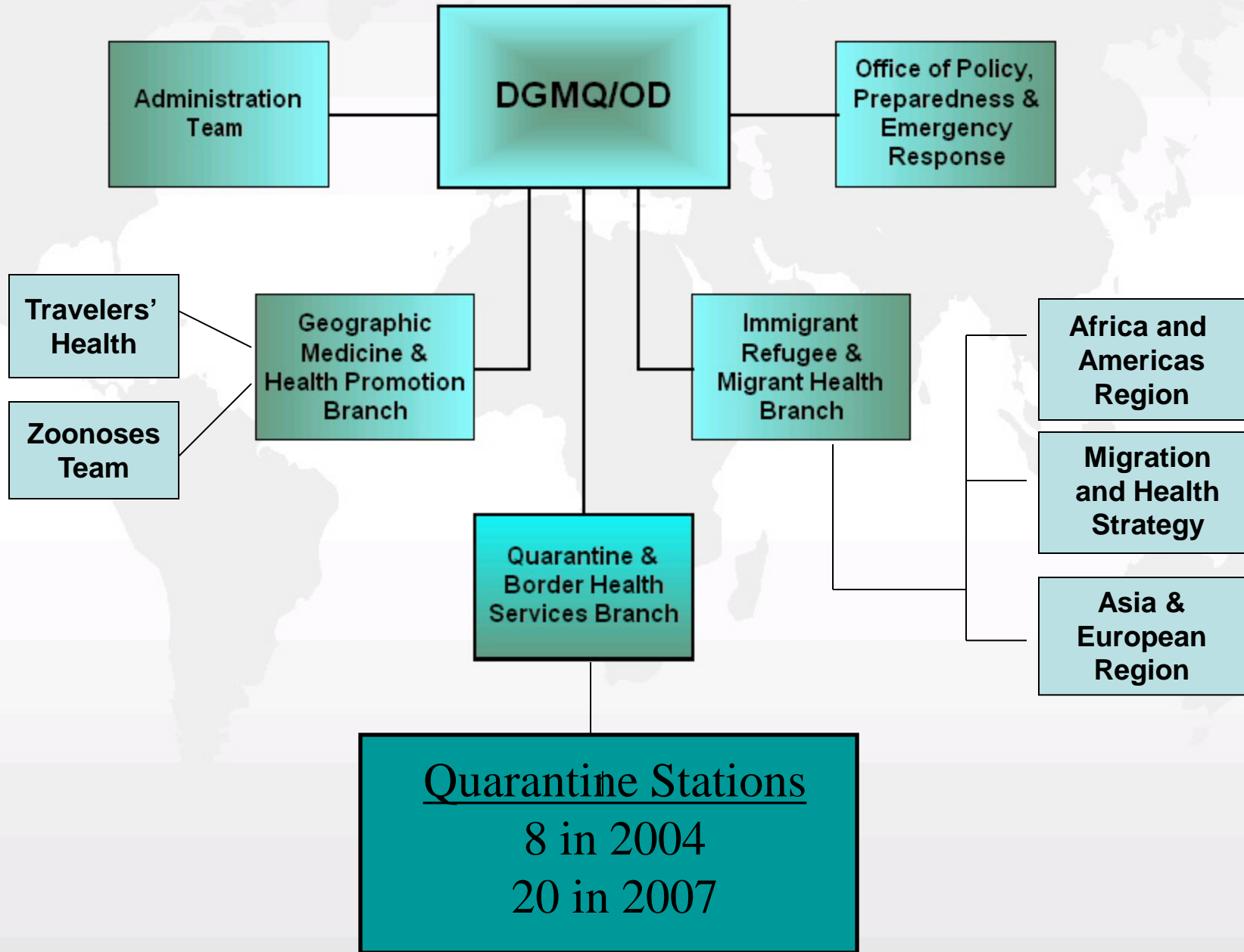
**CENTERS FOR DISEASE CONTROL & PREVENTION**  
Division of Global Migration and Quarantine  
(DGMQ)



# CDC Quarantine Stations 2007 Jurisdictions



# Division of Global Migration and Quarantine



# Our Mission

... To protect the health of the public from communicable diseases through science, partnerships, and response at U.S. ports



# Accomplishing Our Mission (42 CFR Parts 70 and 71)

- Regulate importations
- Process migrant documentation
- **Respond to notification of illness in international travelers**



# Quarantine Diseases

## Executive Order of the President 13295

- CHOLERA
- DIPHTHERIA
- INFECTIOUS TB
- PLAGUE
- SMALLPOX
- YELLOW FEVER
- VIRAL HEMORRHAGIC FEVERS
- SARS
- NOVEL OR RE-EMERGENT INFLUENZA



# Definitions

- **Isolation:**
  - Separation of ill persons with contagious disease
  - Often in a hospital setting
  - Applied to individual or group level



# Definitions (cont.)

- **Quarantine**
  - Restriction of well persons presumed exposed
  - Applied at the individual or community level
- **May be voluntary or mandatory**





# Responding to Illness

- **Passive surveillance:**
- **We wait for notification of illness from-**
  - Airline / vessel pilots
  - Federal partners
  - Police, fire, EMTs
  - Health departments
  - Family, work colleagues



# Responding to Illness (cont.)

- **Active surveillance:**
- **We wait at arrival of each conveyance and visually examine each traveler**
  - Interview those who are ill
  - Continue to respond to reports of illness



# Responding to Illness (cont.)

## Evaluation of ill person:

- Identify symptoms and travel itinerary
- Determine if ill person should be isolated and further evaluated
- Identify potentially exposed travelers



# Symptoms of Interest

- Fever ( $> 100$  F)
- Rash (smallpox, measles, etc.)
- Severe diarrhea (cholera)
- Glandular swelling (plague)
- Jaundice (yellow fever)
- Stiff neck (meningitis)
- Unusual bleeding (viral hemorrhagic fevers)
- Respiratory distress (SARS, pan flu)



# Notification

- **DGMQ notifies state and local health authorities if ill travelers sent to hospital**
- **DGMQ identifies all travelers potentially exposed to the ill passenger**



# Online Resources

- Division of Global Migration and Quarantine:  
[www.cdc.gov/ncidod/dq/index.htm](http://www.cdc.gov/ncidod/dq/index.htm)
- Centers For Disease Control and Prevention:  
[www.cdc.gov](http://www.cdc.gov)



# DGMQ Staff in Detroit

Gabe Palumbo, MBA, MPH

Officer in Charge

Tel: 734-955-6197

[gjp0@cdc.gov](mailto:gjp0@cdc.gov)

Curi Kim, MD, MPH

Quarantine Medical Officer

[cnk6@cdc.gov](mailto:cnk6@cdc.gov)

