

How to Examine for Scabies

Common Symptoms of Scabies are:

- Itching (worse at night)
- Rash

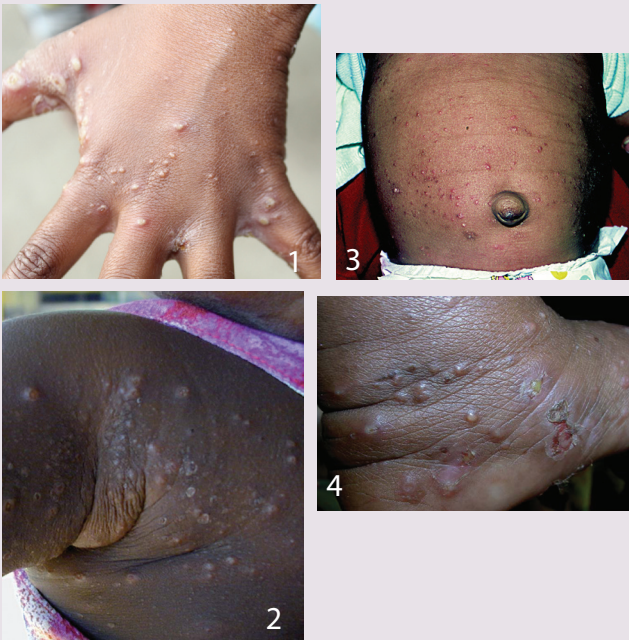
Look at:

- 1 Hands**
look between fingers, palms, wrists
- 2 Elbows**
- 3 Back**
look between shoulder blades
- 4 Armpits**
- 5 Waist**
look at belt line all the way around
- 6 Knees**

(Wear gloves for each examination and change gloves between each exam.)

Look for: *Scabies can look like one of the following:*

A. Pustule and Pimple-Like Lesions



B. Rash



C. Burrow Lesions (less commonly found)

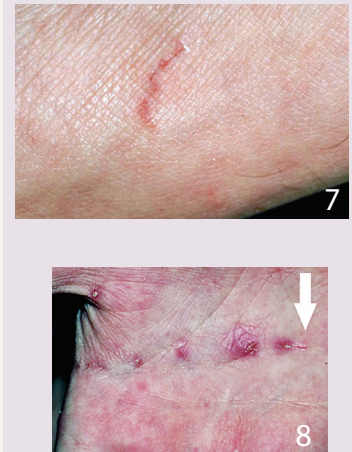


Photo Credits

1: Sarah Hannam 2: Recognizing and Treating Skin Conditions FlipChart. Menzies School of Health Research, 2009. 3: Goodheart, HP. Goodheart's Photoguide of Common Skin Disorders, 2nd ed, Lippincott Williams & Wilkins, Philadelphia 2003. Copyright ©2003 Lippincott Williams & Wilkins. In: UpToDate, Post, TW (Ed), UpToDate, Waltham, MA, 2014. 4: Recognizing and Treating Skin Conditions FlipChart. Menzies School of Health Research, 2009. 5: Fleisher, GR, Ludwig, S, Baskin, MN. Atlas of Pediatric Emergency Medicine, Lippincott Williams & Wilkins, Philadelphia 2004. Copyright ©2004 Lippincott Williams & Wilkins. In: UpToDate, Post, TW (Ed), UpToDate, Waltham, MA, 2014. 6: Image used with permission of the American Academy of Dermatology National Library of Dermatologic Teaching Slides 7: www.visualdx.com. Copyright Logical Images, Inc.. In: UpToDate, Post, TW (Ed), UpToDate, Waltham, MA, 2014. 8: Goodheart, HP. Goodheart's Photoguide of Common Skin Disorders, 2nd ed, Lippincott Williams & Wilkins, Philadelphia 2003. Copyright ©2003 Lippincott Williams & Wilkins. In: UpToDate, Post, TW (Ed), UpToDate, Waltham, MA, 2014.



U.S. Department of
Health and Human Services
Centers for Disease
Control and Prevention