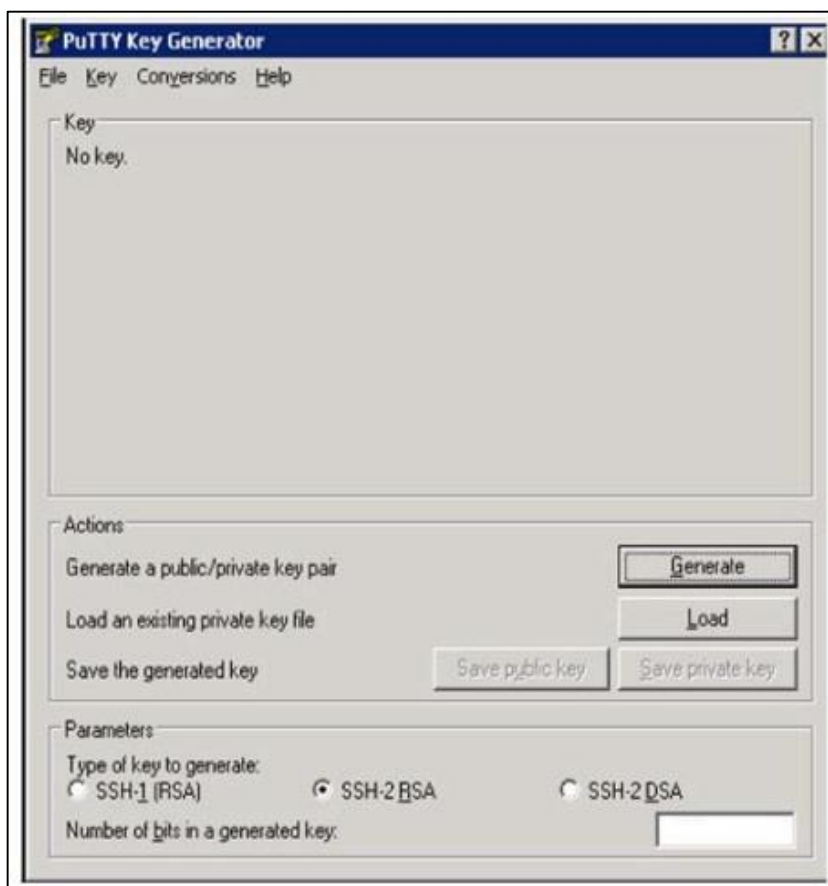
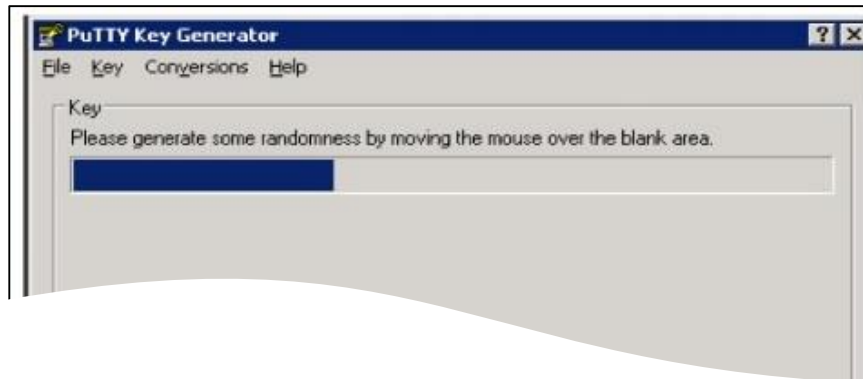


APPENDIX A. INSTRUCTIONS FOR CREATING SSH KEY PAIR

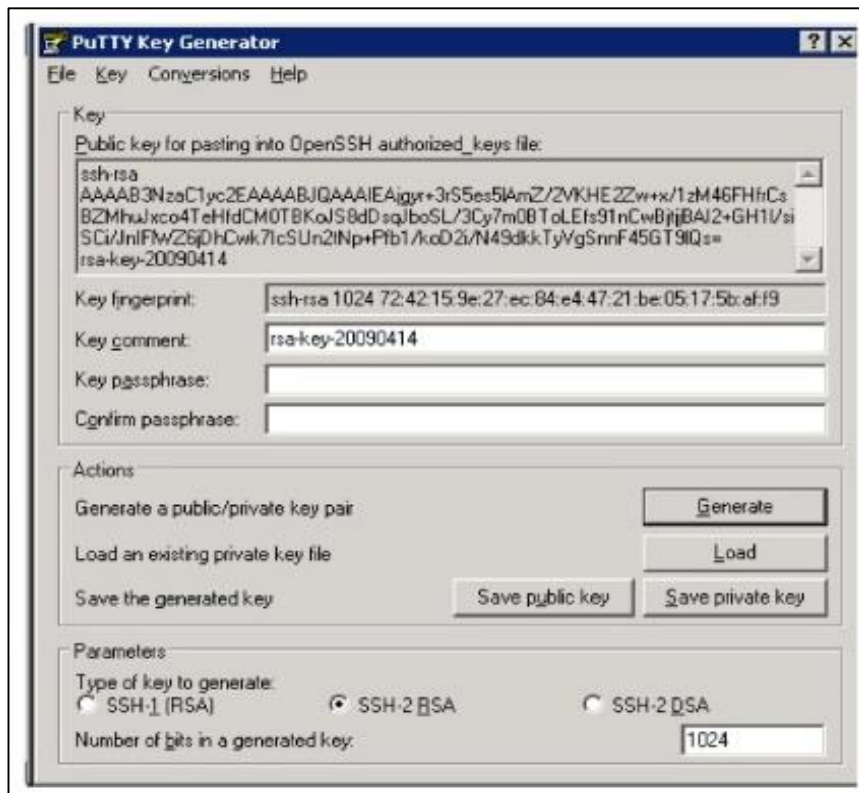
1. Download PuTTYgen
<http://www.chiark.greenend.org.uk/~sgtatham/putty/download.html>
2. Run PuTTYgen.exe
 - a. Type of key to generate: **SSH-2 RSA**
 - b. Number of bits in a generated key: **2048**



3. Click on **Generate** and move your mouse randomly over the box as instructed.



4. Create a password of your choice.
 - a. Enter **Key passphrase**
 - b. Enter **Confirm passphrase**



5. Click on **Save public key**
6. Click on **Save private key**

Keep your private key secret—do not share with anyone, at any time.