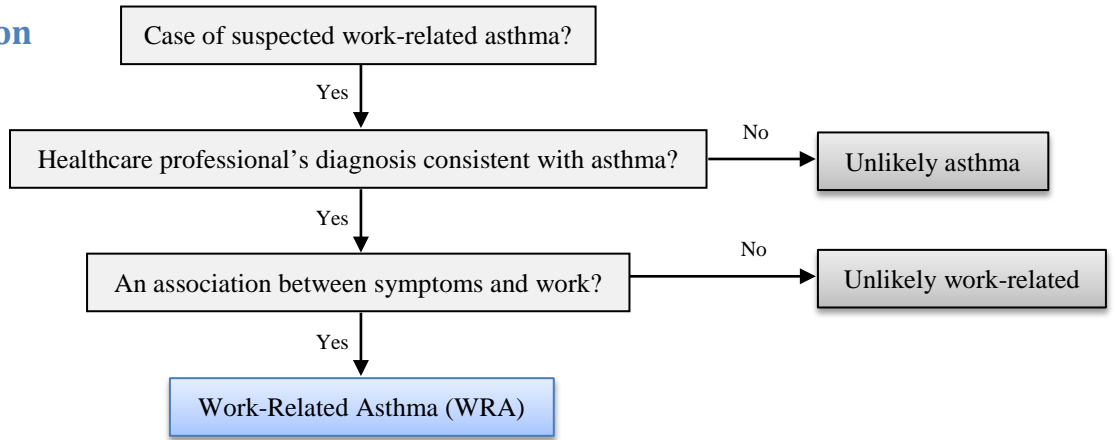
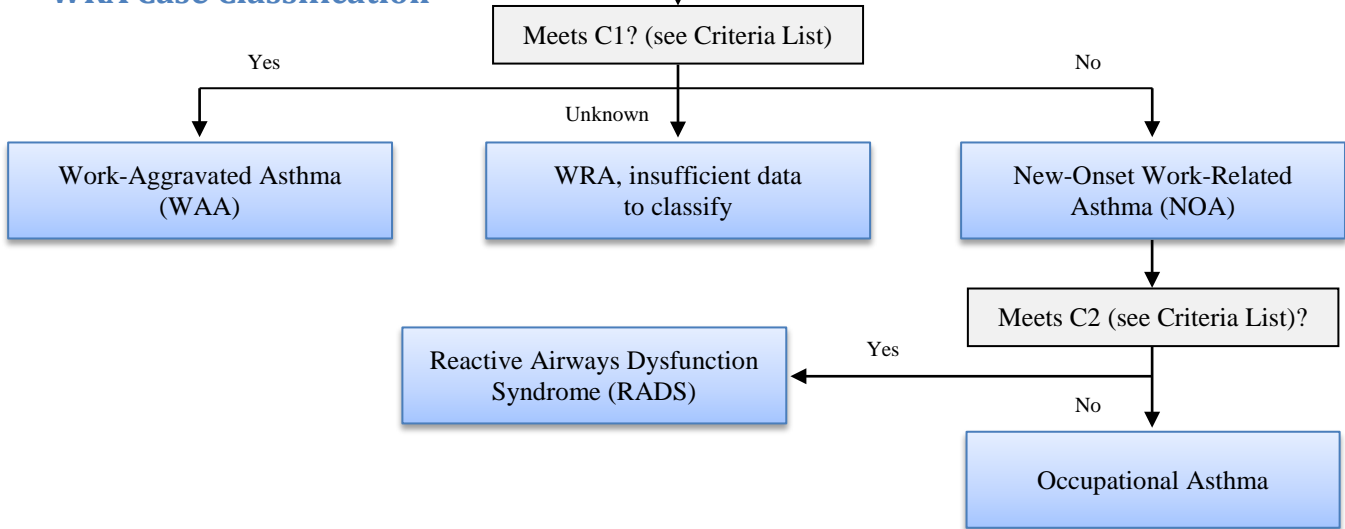


# Decision Logic for Work-Related Asthma

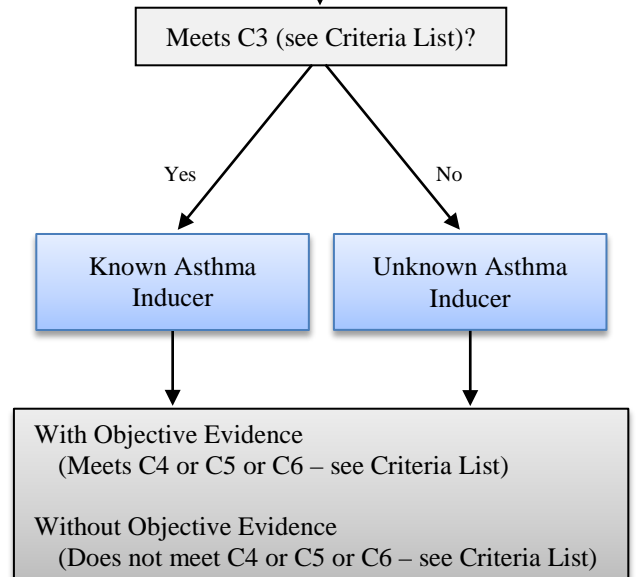
## Case Identification



## WRA Case Classification



## Occupational Asthma Case Subclassification



### Criteria List

- C1) Increased asthma symptoms or increased use of asthma medication (upon entering an occupational exposure setting) experienced by a person with preexisting asthma who was symptomatic or treated with asthma medication within the 2 years prior to entering that new occupational setting.
- C2) New asthma symptoms that develop within 24 hours after a one-time high-level inhalation exposure (at work) to an irritant gas, fume, smoke, or vapor and that persist for at least 3 months.
- C3) Workplace exposure to an agent previously associated with occupational asthma using Association of Occupational and Environmental Clinics asthmagen criteria.
- C4) Work-related changes in serially measured forced expiratory volume in 1 second (FEV1) or peak expiratory flow rate (PEFR).
- C5) Work-related changes in bronchial responsiveness as measured by serial nonspecific inhalation challenge testing.
- C6) Positive response to specific inhalation challenge testing with an agent to which the patient has been exposed at work.