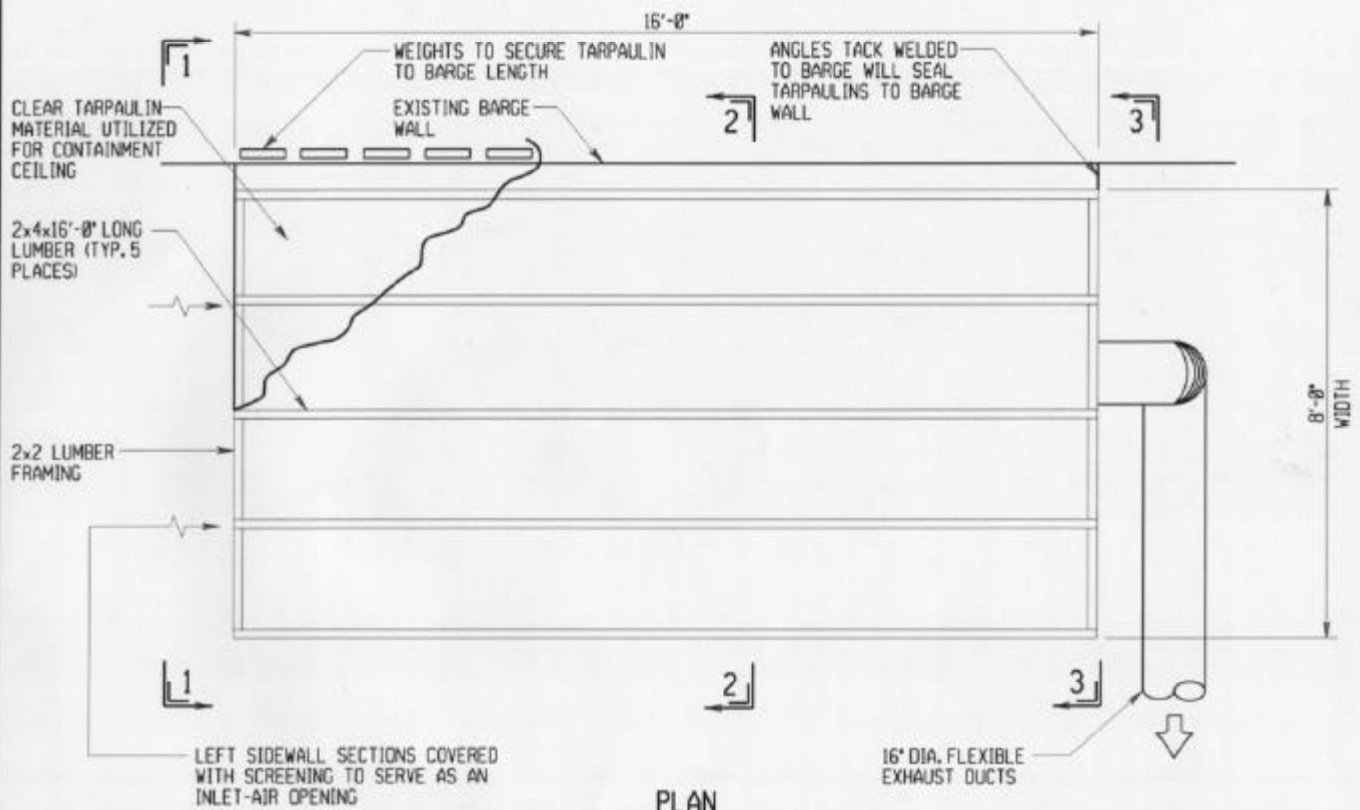


APPENDIX 2
Productivity Data

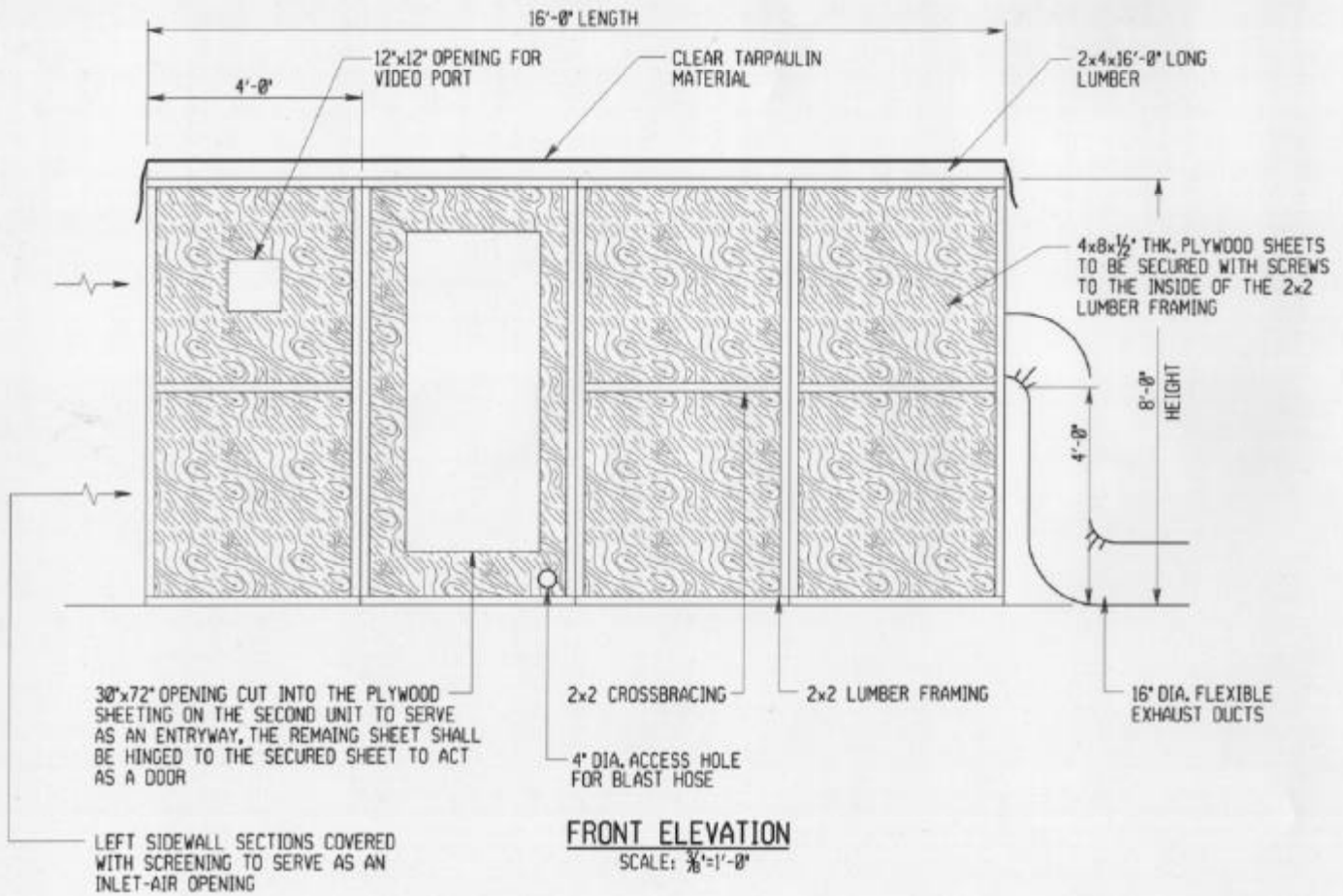
Abrasive Type	Log Number	Nozzle Size	Nozzle Pressure	Choke Valve Setting	Metering Valve Setting
CS	J97119-03	7/16"	95 psi	70°	1/2"
N	J97119-P2-05	7/16"	95 psi	90°	3/8"
S	J97119-07	7/16"	95 psi	90°	5/16"
SS	J97119-01	7/16"	95 psi	90°	5/16"
SSDS	J97119-02	7/16"	95 psi	90°	5/16"
CP	J97119-P2-04	7/16"	95 psi	90°	7/16"
G	J97119-P2-06	7/16"	95 psi	90°	5/16"
SG	J97119-P2-08	7/16"	95 psi	90°	3/8"

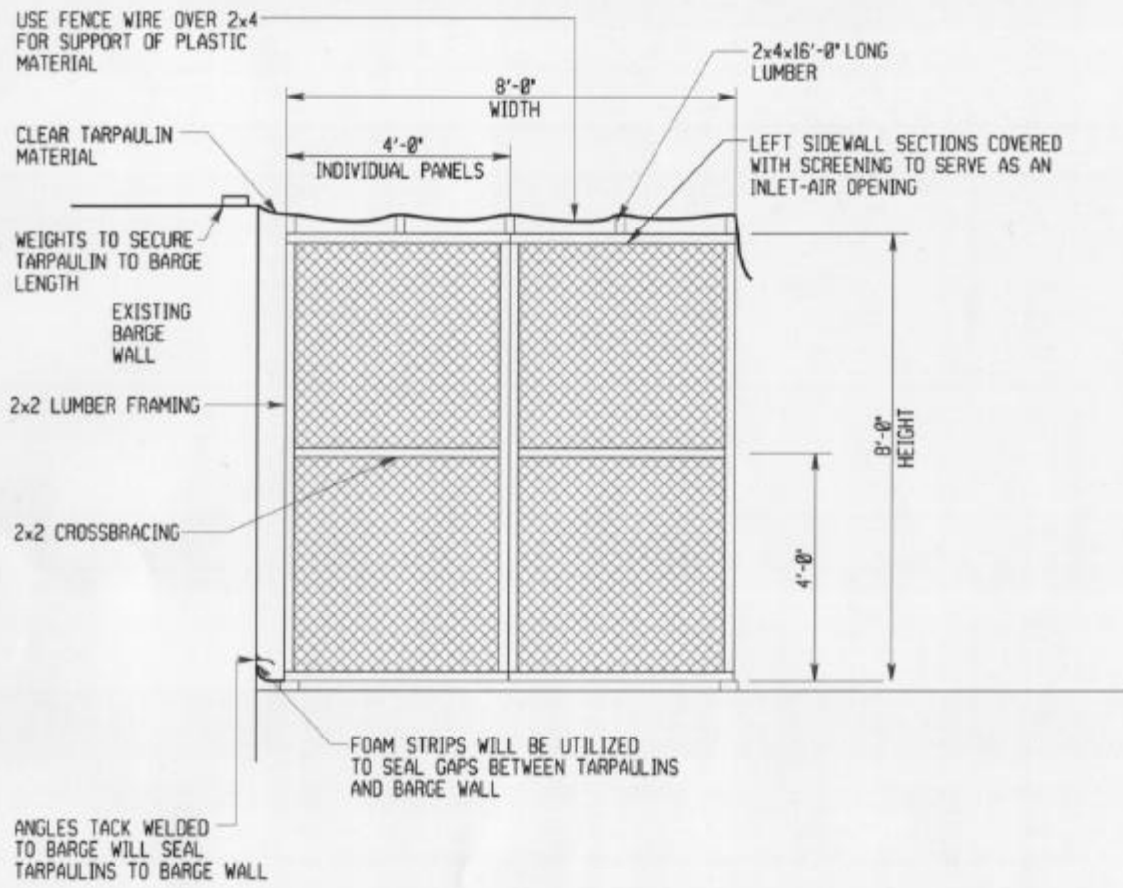
**APPENDIX 2
Blast Run Conditions**

Abrasive Type	Log Number	Blast Date	Blast Time	Ambient Conditions					Ventilation
				Air Temp °F	RH %	DP °F	ST °F	Bar Pre	Air Flow (FPM)
CS	J97119-03	09/16/1997	12:55 PM	78	60	63	88	30.00	41.67
N	J97119-P2-05	09/24/1997	9:40 AM	55	70	45	63	29.26	41.42
S	J97119-07	09/19/1997	8:43 AM	60	83	55	71	29.18	23.92
SS	J97119-01	09/17/1997	9:57 AM	69	76	61	72	29.80	41.08
SSDS	J97119-02	09/18/1997	10:00 AM	68	80	62	75	30.09	36.25
CP	J97119-P2-04	09/23/1997	10:15 AM	60	78	53	66	29.21	44.92
G	J97119-P2-06	09/22/1997	9:45 AM	55	70	45	63	29.38	27.25
SG	J97119-P2-08	09/25/1997	9:44 AM	58	83	53	66	29.00	35.08

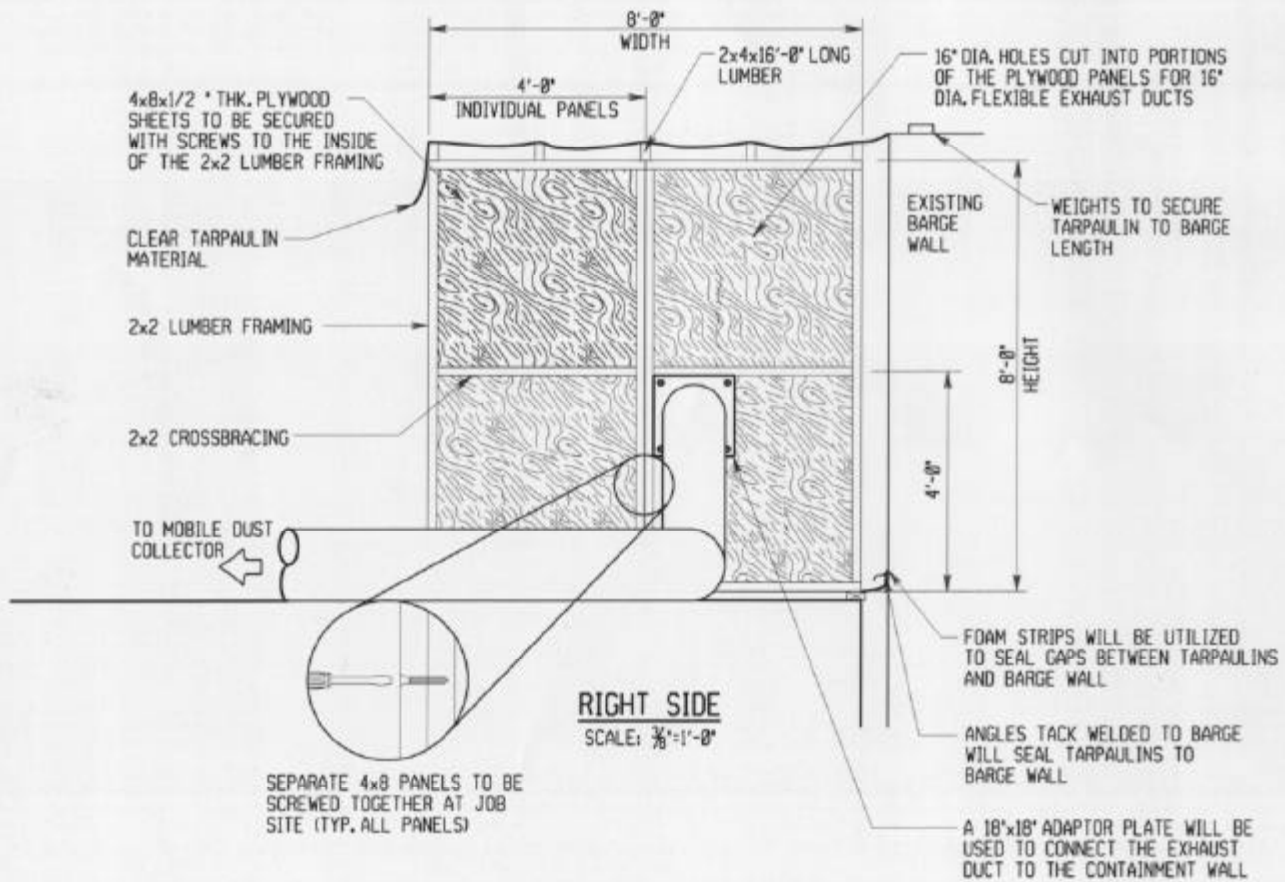


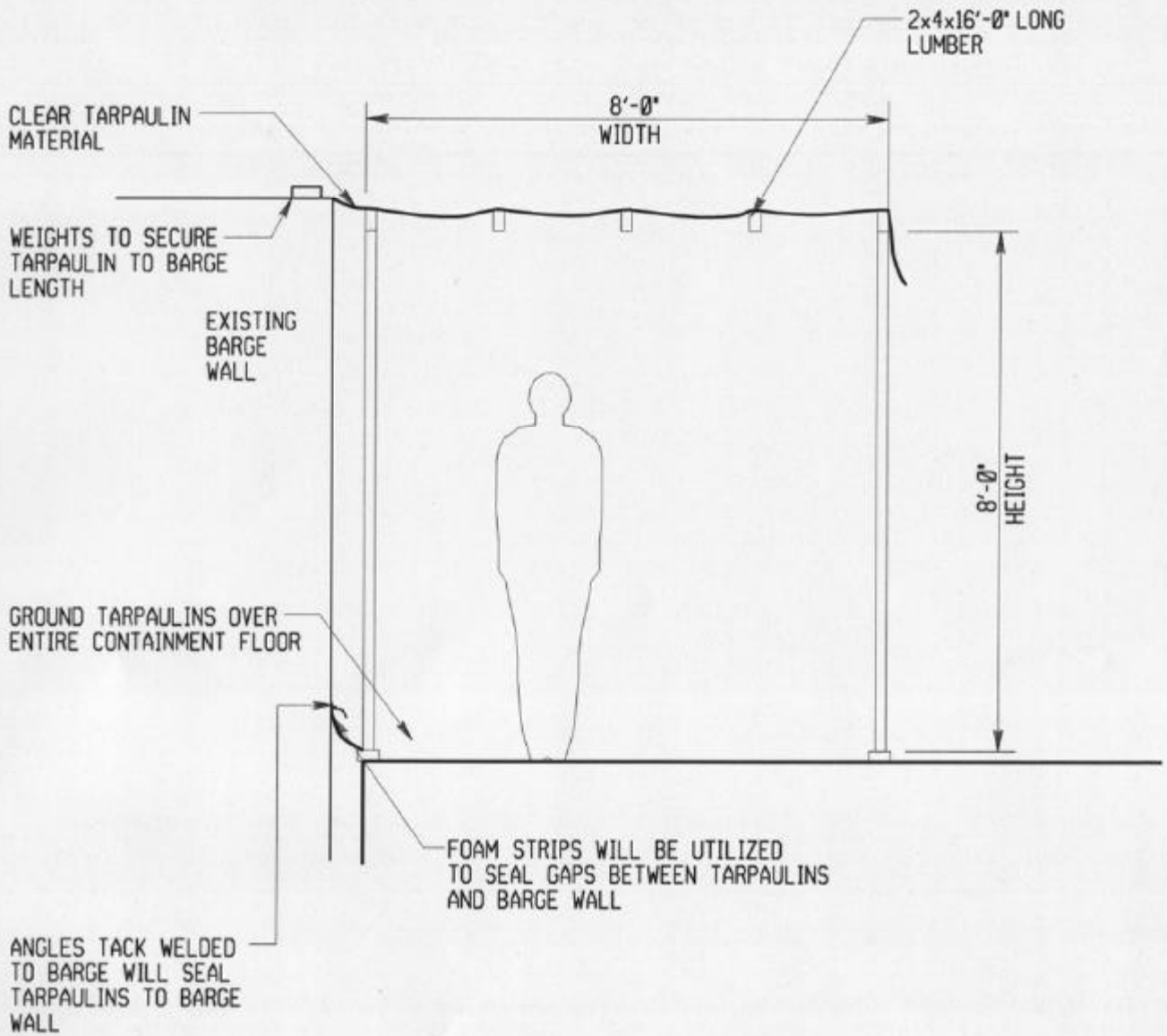
PLAN
SCALE: 3/8"=1'-0"





LEFT SIDE
SCALE: 3/8"=1'-0"





SECTION 1-1
 SCALE: $\frac{3}{8}'' = 1'-0''$