

FACE IT: Report Slides



Law Enforcement Officer – Motor Vehicle



State Trooper Struck by Tractor Trailer While Conducting a Commercial Vehicle Traffic Stop - Illinois (NIOSH LEO 2022-01)

Summary

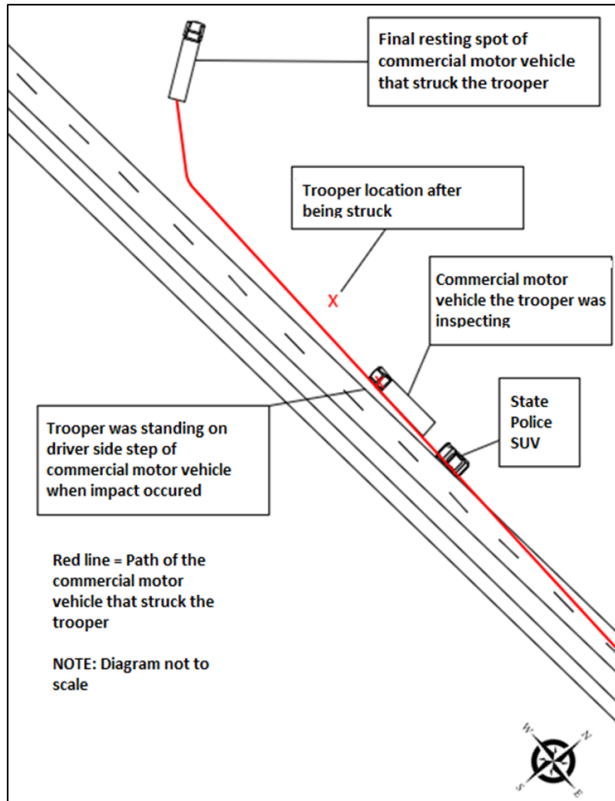


Photo of the Trooper's vehicle along with the commercial motor vehicle after the fatal incident.
(Photo courtesy of the Illinois State Police.)

- On March 28, 2019, a 34-year-old state trooper assigned to patrol duties as a Commercial Vehicle Enforcement Officer (CVEO), initiated a traffic stop of a tractor trailer on the right shoulder of a 4-lane highway.
- After she conducted her inspection, the trooper was standing on the driver's side running board of the truck talking to the driver.
- Another tractor trailer traveling westbound stuck the trooper, throwing her off the running board and into a ditch parallel to the highway.
- First responders attempted life saving measures but were unsuccessful.
- The trooper was pronounced deceased at the scene.



Summary



Drawing of the path of the commercial motor vehicle that struck the trooper.



Photo of commercial vehicles on fire at the scene after the impact. (Photo courtesy of the Illinois State Police.)



Contributing Factors

- State trooper positioned in area exposed to moving traffic
- Commercial Motor Vehicle failure to move over and operating a motor vehicle while fatigued



Law Enforcement Officer – Motor Vehicle

Recommendations

- State law enforcement agencies should consider developing and enforcing a standard operating procedure or policy to conduct commercial motor vehicle inspections in an area away from moving traffic whenever possible.
- State law enforcement agencies should consider developing and enforcing a standard operating procedure or policy to conduct passenger side approaches when it removes or lessens the hazards of moving traffic.
- Law enforcement officers and other emergency responders should maintain situational awareness while working outside of their patrol unit and ensure they minimize their exposure to oncoming traffic.



Law Enforcement Officer – Motor Vehicle

Recommendations

- State, county, and municipal authorities should consider the promotion of public awareness campaigns to inform motorists of the dangers of driving while fatigued or ill.
- State, county, and municipal authorities should consider promoting public awareness campaigns to inform motor vehicle operators of the risks that law enforcement officers face while operating along the roadside and of the need to follow “Move Over” laws.



Law Enforcement Officer – Motor Vehicle

Recommendations

- State, county, and municipal authorities should consider wearing high-visibility safety apparel, such as retro-reflective vests, when conducting commercial motor vehicle inspections along an active highway to ensure greater visibility.
- Commercial Vehicle Enforcement Officers should consider placing emergency warning devices when conducting commercial motor vehicle inspections along an active highway to ensure greater visibility.



State Trooper Struck by Tractor Trailer While Conducting a Commercial Vehicle Traffic Stop - Illinois (NIOSH LEO 2022-01)

Download the full report:
<https://www.cdc.gov/niosh/face/pdfs/L202201.pdf>

FACE
Fatality Assessment and Control Evaluation Program

Law Enforcement Officer – Motor Vehicle

REPORTR: L2022-01 **REPORT DATE:** September 5, 2023

INCIDENT HIGHLIGHTS

DATE: March 28, 2019

TIME: 12:22 p.m.

VICTIM: 34-year-old state police trooper, commercial vehicle enforcement officer

INDUSTRY/NAICS CODE: Police Protection/92

LAW ENFORCEMENT AGENCY: State Police; 1836 sworn officers

SAFETY & TRAINING: 12-year veteran state trooper, Level 1 Certified Commercial Vehicle Enforcement Officer

SCENE: 4-lane highway (2 eastbound and 2 westbound lanes separated by a grass median)

LOCATION: Illinois

EVENT TYPE: Struck by

REPORTR: L2022-01 **REPORT DATE:** September 5, 2023

State Trooper Struck by Tractor Trailer While Conducting a Commercial Vehicle Traffic Stop - Illinois

SUMMARY

On March 28, 2019, a 34-year-old state trooper assigned to patrol duties as a Commercial Vehicle Enforcement Officer (CVEO), initiated a traffic stop of a tractor trailer on the right shoulder of a 4-lane highway. After she conducted her inspection, the trooper was standing on the driver's side running board of the truck talking to the driver, when another tractor trailer traveling westbound struck the trooper, throwing her off the running board and into a ditch parallel to the highway. First responders attempted life saving measures but were unsuccessful. The trooper was pronounced deceased at the scene. [READ THE FULL REPORT: \(p.3\)](#)

CONTRIBUTING FACTORS

Key contributing factors identified in this investigation include:

- State trooper standing in an area exposed to moving traffic
- Commercial motor vehicle failure to move and operating a motor vehicle while fatigued [LEARN MORE: \(p.8\)](#)

RECOMMENDATIONS

NIOSH investigators concluded that, to help prevent similar occurrences, State law enforcement agencies should:

- Consider developing and enforcing a standard operating procedure or policy to conduct commercial motor vehicle inspections in an area away from moving traffic whenever possible
- Consider developing and enforcing a standard operating procedure or policy to conduct passenger side approaches when it removes or lessens the hazards of moving traffic [LEARN MORE: \(p.9\)](#)

REPORT SLIDES

<https://www.cdc.gov/niosh/topics/leo/>



Contact Us

Fatality Assessment and Control Evaluation
Surveillance and Field Investigations Branch
Division of Safety Research, NIOSH
1000 Frederick Lane, M/S 1808
Morgantown, West Virginia 26505-2888
FACE Web Site: <https://www.cdc.gov/niosh/face/>