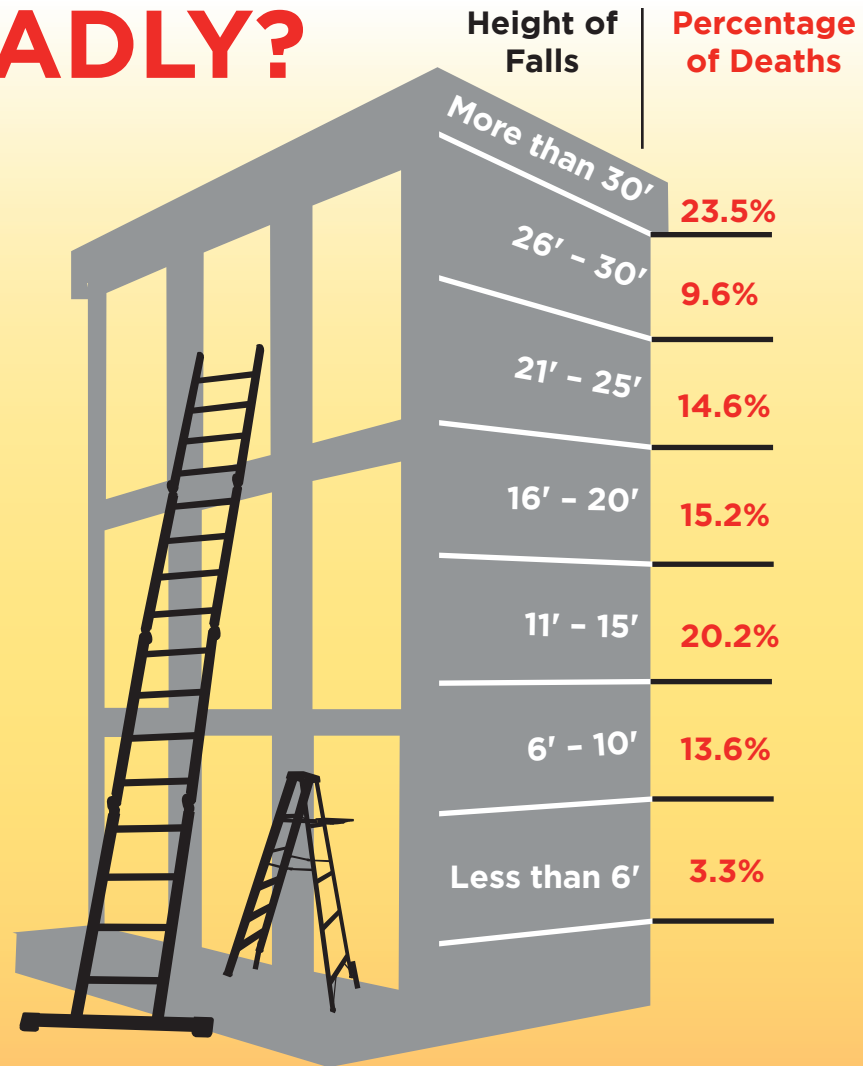


How High is **DEADLY?**

You may not be very high off the ground but if you fall, it could be deadly.

In 2015, 16.9% of all fatal falls were from heights of 10 feet or less.



Join the Campaign to Stop Construction Falls!

www.stopconstructionfalls.com



PLAN. PROVIDE. TRAIN.

Source: Fatal occupational injuries incurred by workers in the construction industry due to falls to a lower level, 2011-2015. Bureau of Labor Statistics Injuries, Illnesses, and Fatalities (IIF). Accessed March 2017.