



ATSDR

April 2026 Dialysis Office Hours

Dialysis Team Data

John Keenan, PhD

Statistician II

Centers for Disease Control and Prevention
National Center for Emerging and Zoonotic
Infectious Disease Division of Healthcare Quality
Promotion Surveillance Branch

April 2026

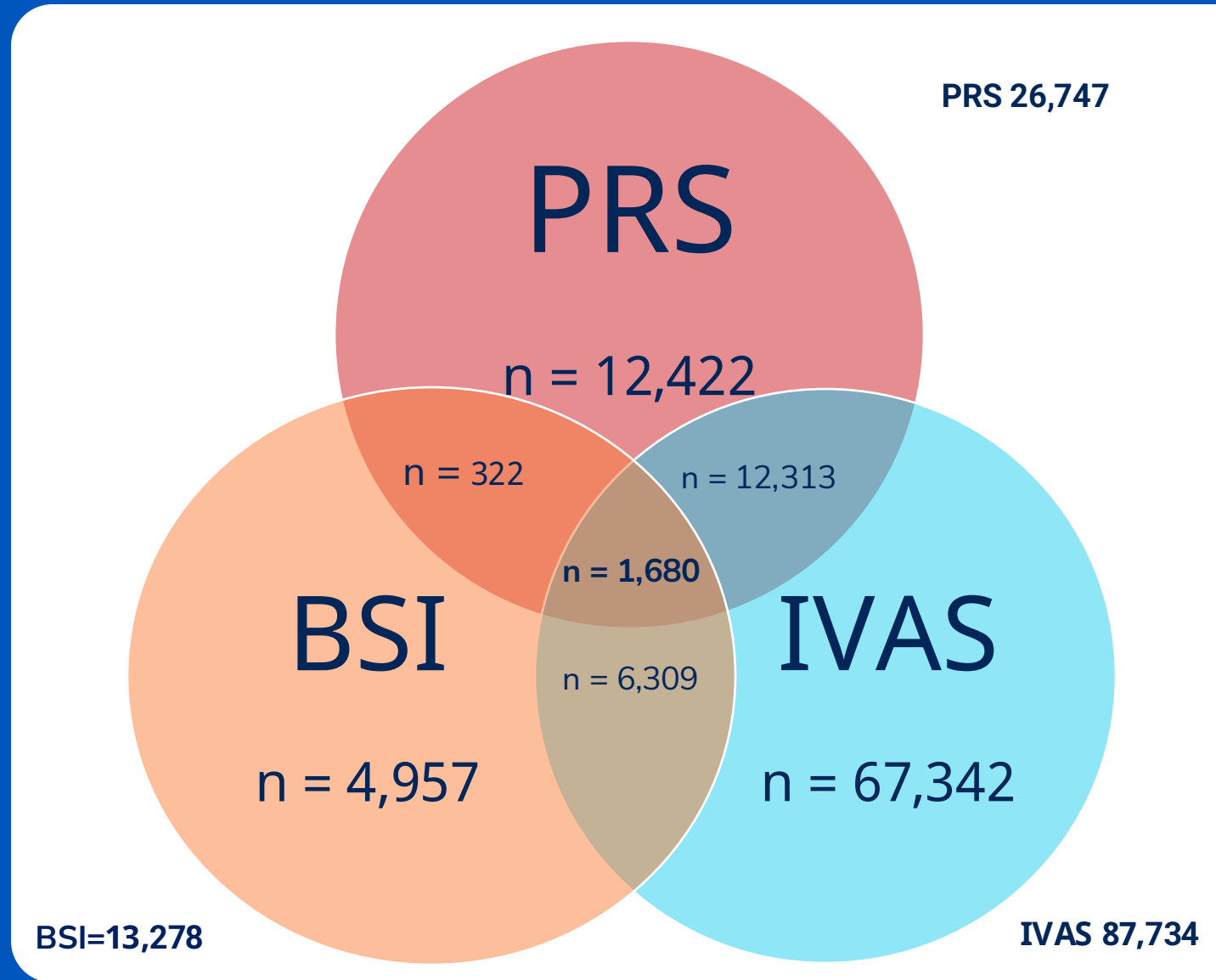


Objectives

- Understand the potential intersections of the three event types:
 - Bloodstream infections (BSI)
 - IV antimicrobial starts (IVAS)
 - Pus, redness swelling (PRS)
- Understand how access types influence risks for infection for each event type
 - Central Venous Catheter (CVC)
 - Arteriovenous (AV) fistula
 - AV graft access
- Understand the magnitude of each event type for 2025 as well as visualize by state
 - BSI-SIR
 - IVAS crude rate
 - PRS crude rate
- Learn where to access similar data for 2019-2023 with 2024 and 2025 updates this summer

Three Event Types

- Bloodstream Infections-(BSI)
- IV Antimicrobial Starts-(IVAS)
- Pus, redness, swelling-(PRS)



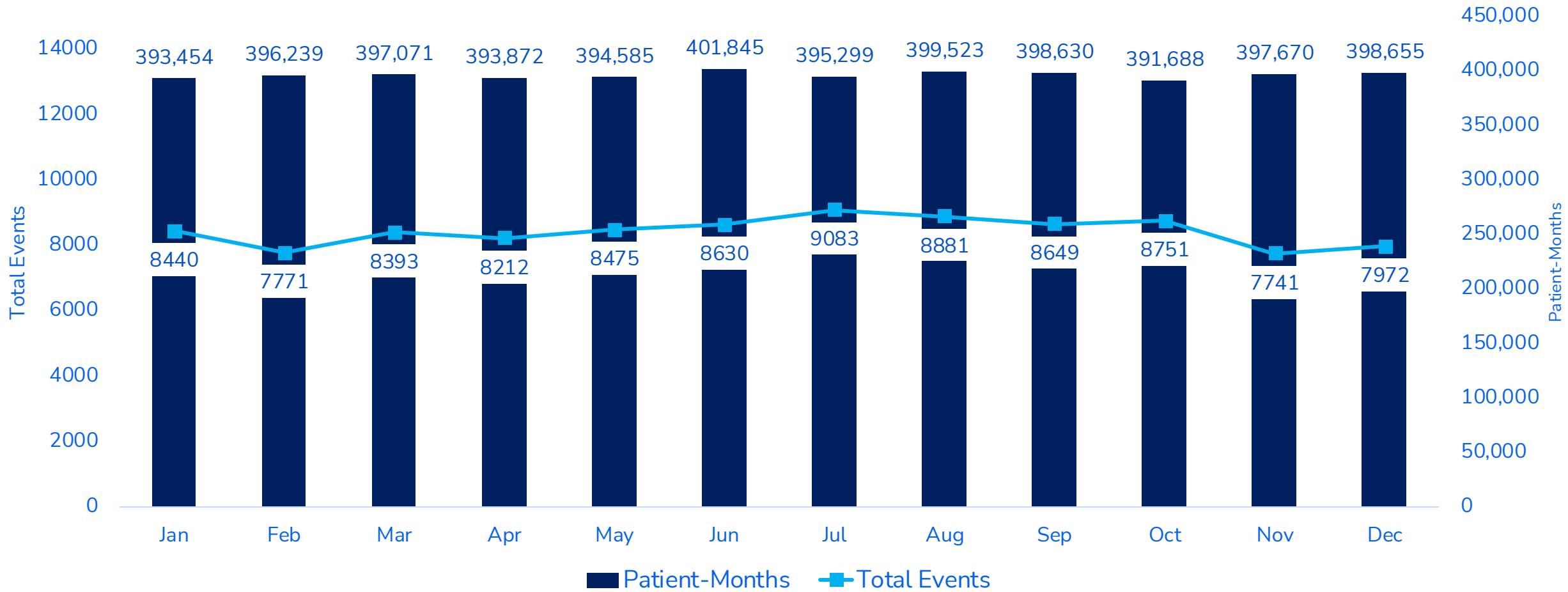
Events by Access Type

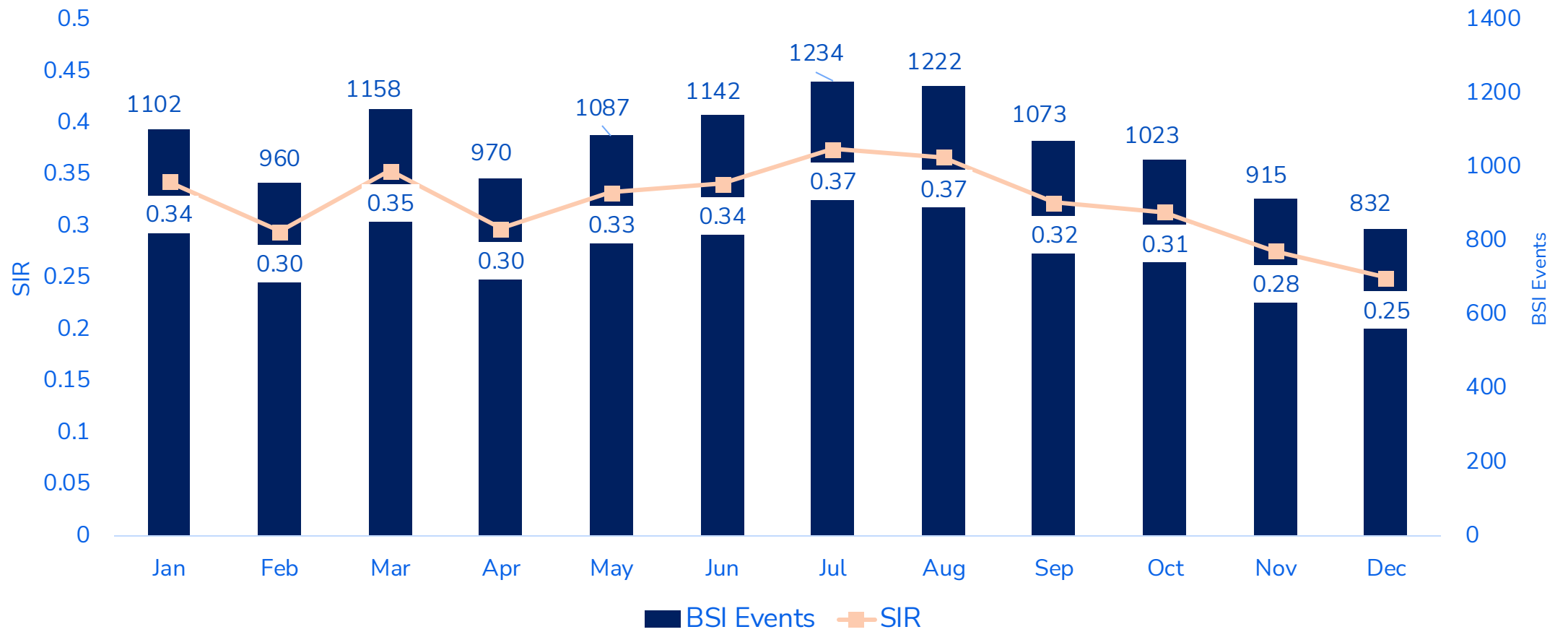
This table shows the crude rates for each event type - BSI, IVAS, and PRS - by each access type for 2025.

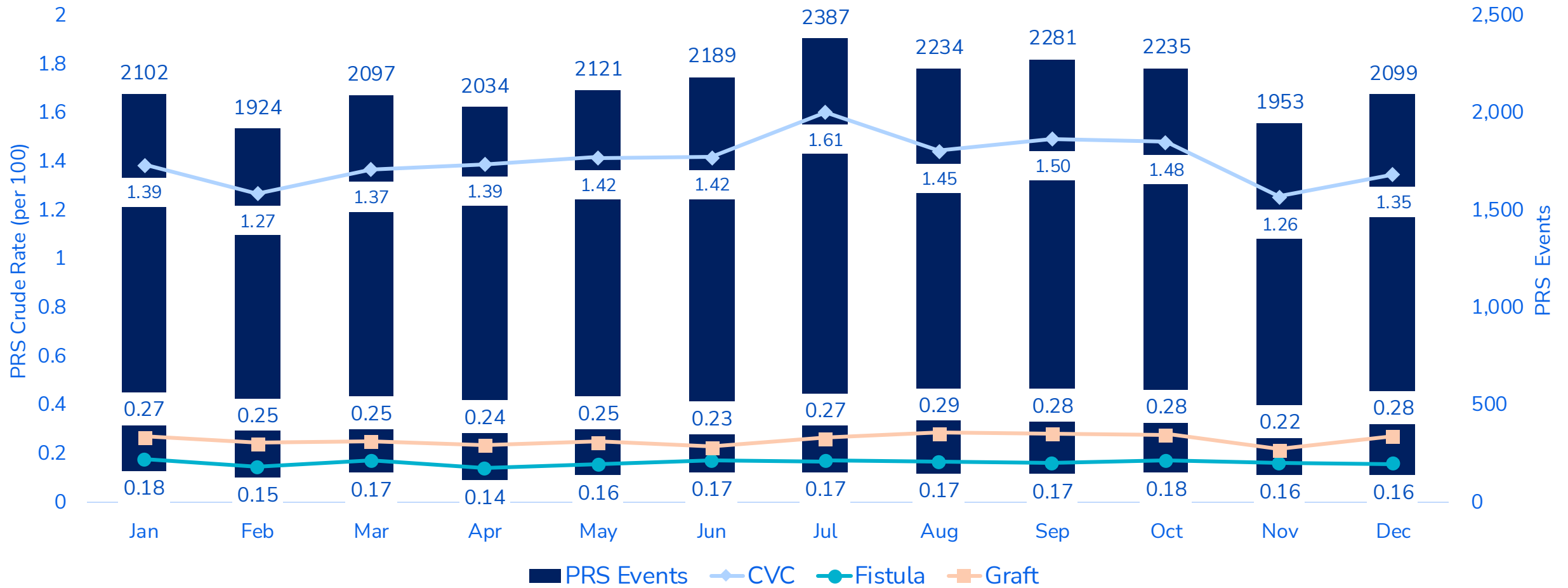
Access types include the following:

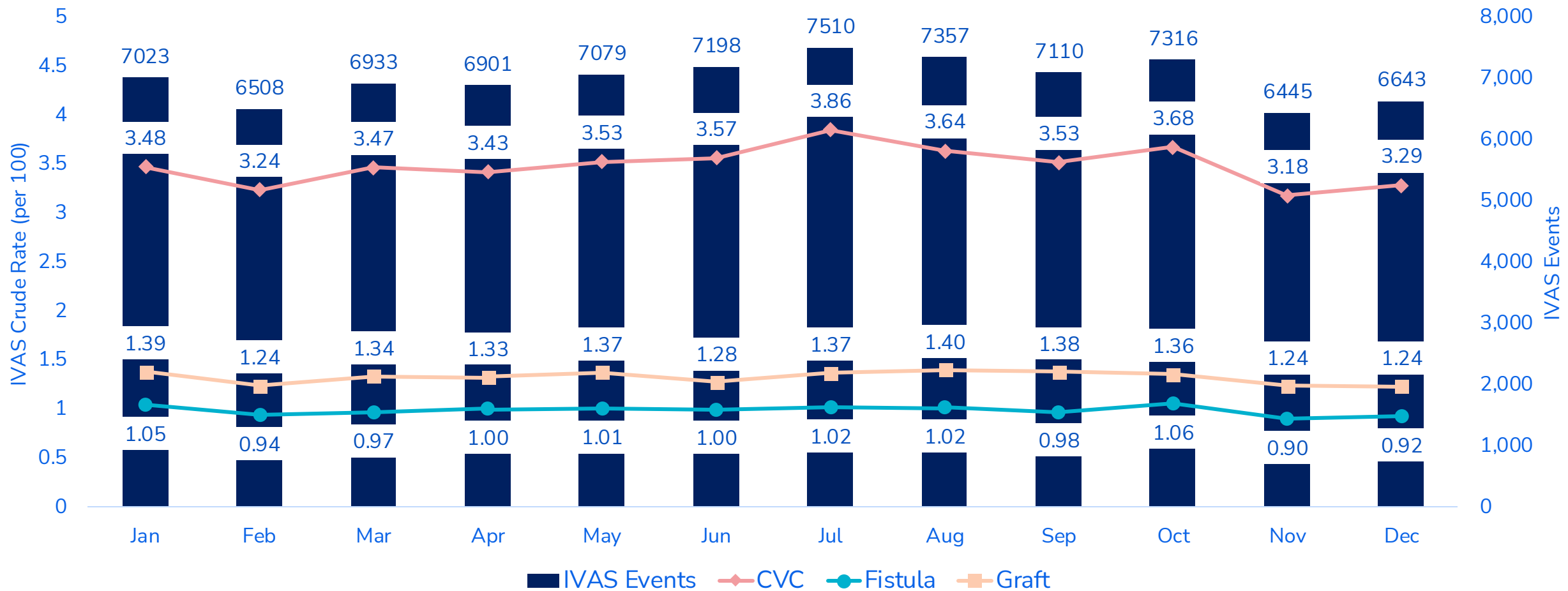
- Central Venous Catheter (CVC)
- Arteriovenous (AV) fistula
- AV graft access.

Event by Access Type	Events (numerator)	Patient-Months(denominator)	Crude Rate (per 100)
All BSI	13,278	4,758,531	0.279
Graft	1,561	787,435	0.198
Fistula	2,629	2,592,838	0.101
CVC	9,057	1,367,842	0.662
All IVAS	87,734	4,758,531	1.844
Graft	10,486	787,435	1.332
Fistula	25,700	2,592,838	0.991
CVC	50,529	1,367,842	3.694
All PRS	26,747	4,758,531	0.562
Graft	2,050	787,435	0.260
Fistula	4,310	2,592,838	0.166
CVC	20,359	1,367,842	1.488

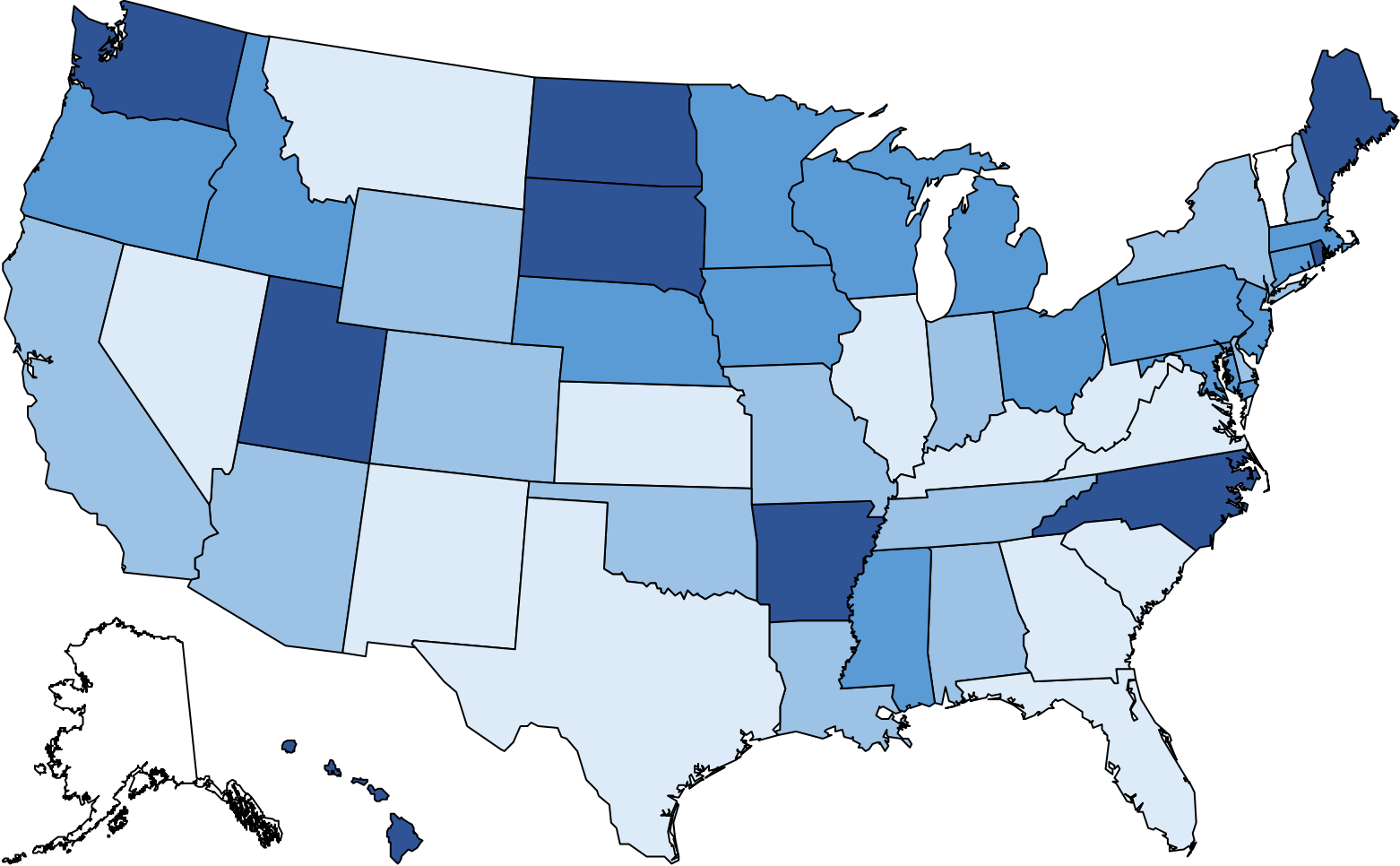








BSI-SIR United States



SIR 0.00-0.264 0.265-0.3345 0.3346-0.4695 0.4696+

Five States Among The Lowest SIR

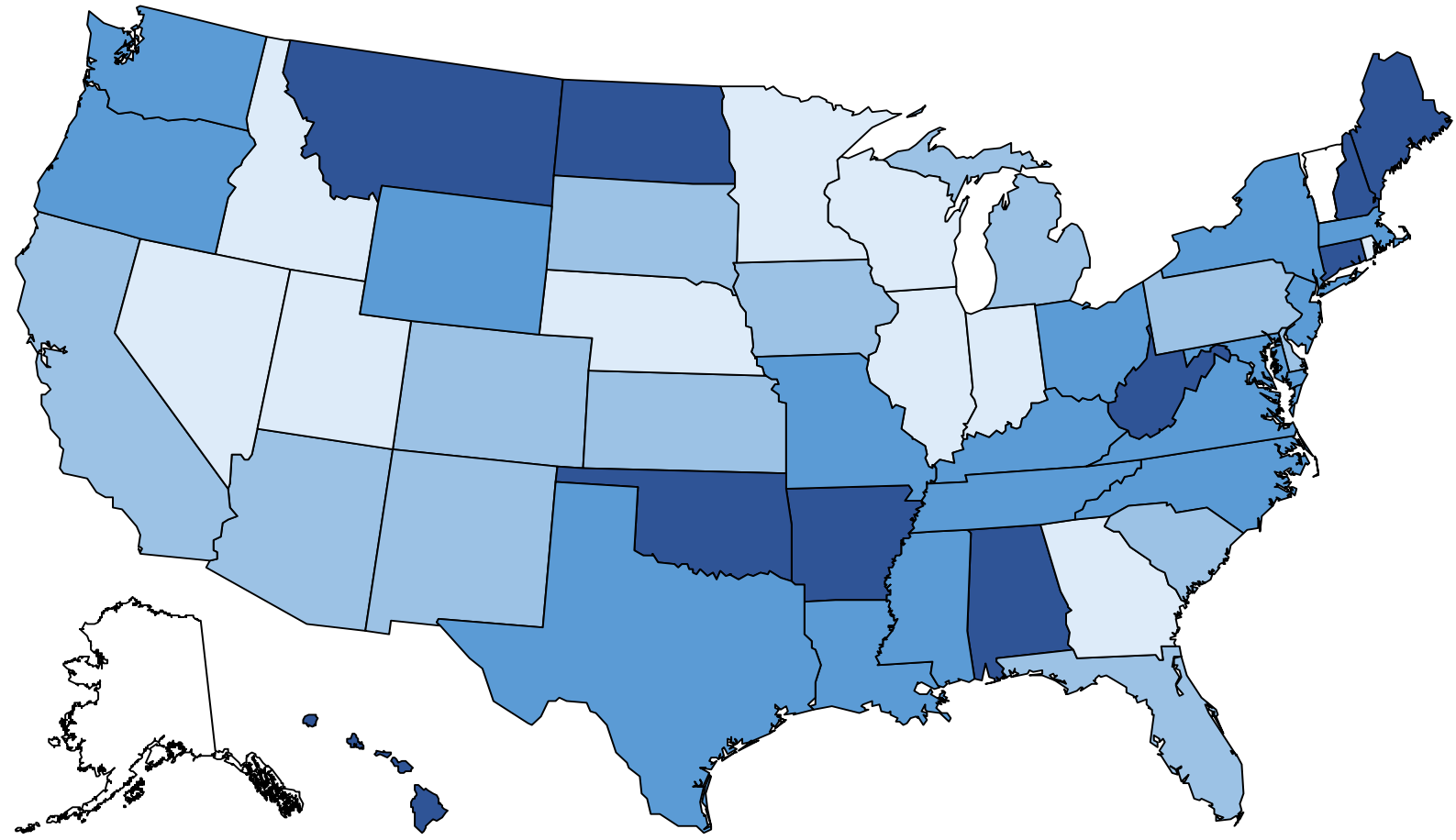
State/ Territory	BSI Events	BSI Expected	SIR
MT	16	74.39	0.216
WV	50	226.02	0.222
NM	66	295.27	0.225
IL	352	15.6.33	0.228
NV	86	361.34	0.237

Five States Among The Highest SIR

State/ Territory	BSI Events	BSI Expected	SIR
HI	155	275.7	0.561
WA	355	633.05	0.561
ME	57	94.21	0.606
SD	67	81.53	0.843
ND	56	66.33	0.843

* States with fewer than 10 reporting facilities values are suppressed

IVAS Crude Rate United States



Five States Among The Lowest IVAS Crude Rate

State/ Territory	IVAS Events	IVAS Crude Rate
NV	436	0.97
RI	129	1.14
UT	255	1.21
IL	2198	1.3
MN	630	1.3

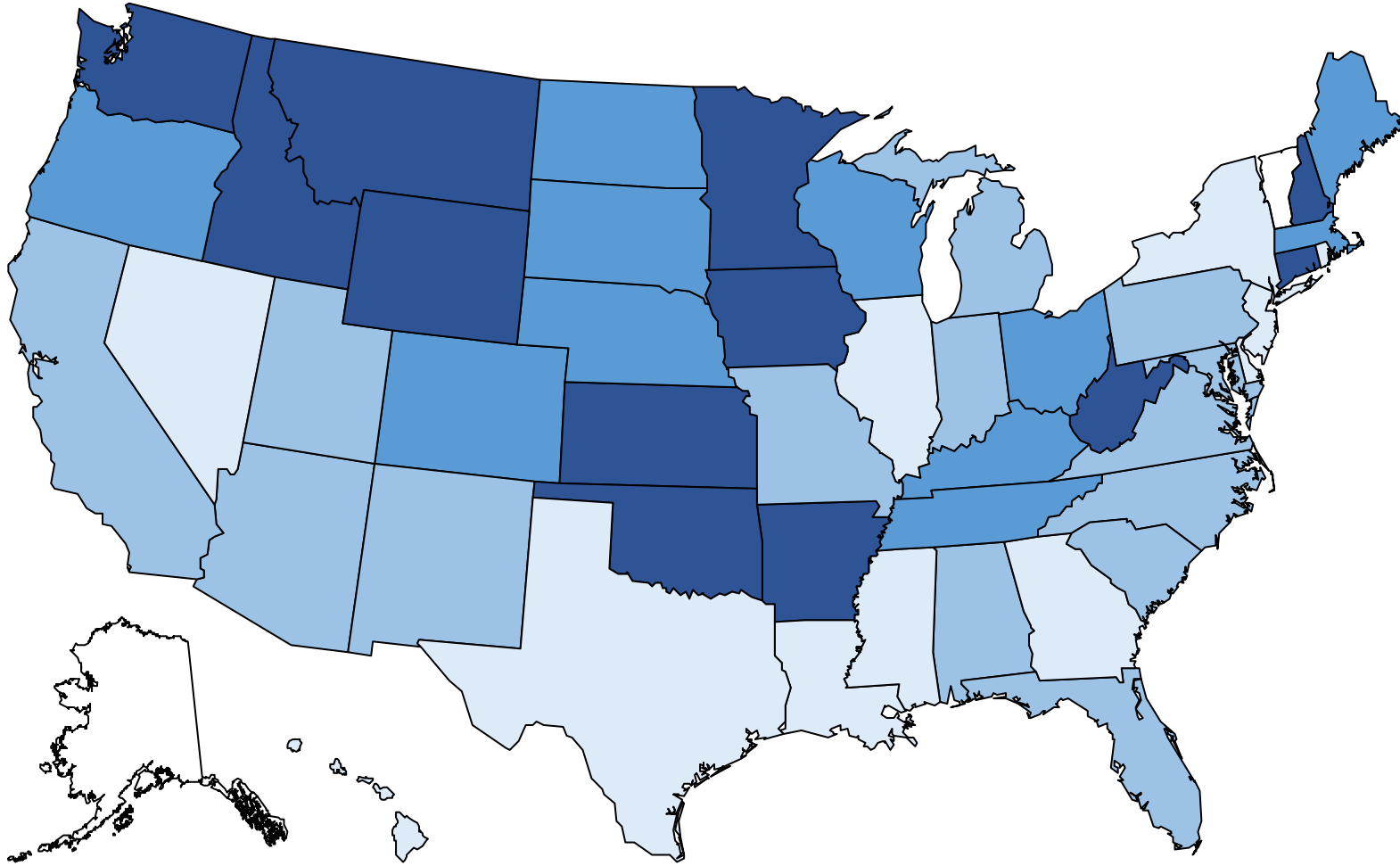
Five States Among The Highest IVAS Crude Rate

State/ Territory	IVAS Events	IVAS Crude Rate
NH	245	2.35
OK	1143	2.37
WV	595	3.09
ND	228	3.31
HI	299	3.63

IVAS Crude Rate (per 100) 0.23-1.495 1.496-1.8 1.18-2.1 2.11+

* States with fewer than 10 reporting facilities values are suppressed

PRS Crude Rate United States



PRS Crude Rate (per 100) 0.00-0.485 0.486-0.595 0.596-0.74 0.75+

Five States Among The Lowest PRS Crude Rate

State	PRS Events	PRS Crude Rate
RI	26	0.23
IL	559	0.33
NV	171	0.38
GA	740	0.39
NY	1251	0.44

Five States Among The Highest PRS Crude Rate

State	PRS Events	PRS Crude Rate
WV	163	0.85
MN	419	0.87
NH	112	1.07
MT	90	1.22
ID	177	1.38

Contact Info:

John Keenan, PhD

Statistician II

Centers for Disease Control and Prevention

National Center for Emerging and Zoonotic Infectious
Disease Division of Healthcare Quality Promotion
Surveillance Branch

Healthcare-Associated Infections in Dialysis | A.R. &
Patient Safety Portal

<https://arpsp.cdc.gov/profile/dialysis/all-123?>

TNY5@cdc.gov



ATSDR

Thank you.

For more information, contact CDC

1-800-CDC-INFO (232-4636)

TTY: 1-888-232-6348 <https://www.cdc.gov/> | <https://www.atsdr.cdc.gov/>

Follow us on social **@CDCgov**

The findings and conclusions in this report are those of the authors and do not necessarily represent the official position of the U. S. Centers for Disease Control and Prevention or the Agency for Toxic Substances and Disease Registry.



ATSDR