



Changes in Births by Month: United States, 2021

Brady E. Hamilton, Ph.D., Michelle J.K. Osterman, M.H.S., and Joyce A. Martin, M.P.H.,
Division of Vital Statistics, National Center for Health Statistics

Abstract

Objectives—This report presents provisional 2021 data and final 2020 and 2019 data on changes in the number of U.S. births by race and Hispanic origin of mother, month of birth, and state.

Methods—Data are based on all birth certificates registered to U.S. residents in the 50 states and the District of Columbia (D.C.); data for 2021 are provisional, and data for 2019 and 2020 are final. Changes in the number of births by month from 2020 to 2021 by race and Hispanic origin of the mother are compared with changes occurring from 2019 to 2020. Changes for the first and second 6 months of the year by race and Hispanic origin and by state are also compared for the periods 2020 to 2021 and 2019 to 2020.

Results—From 2020 to 2021, the number of births declined for January and February and rose for April and each month for June through December. This resulted in a decline of 2% in the number of births for the first 6 months of 2021 and a 4% increase for the second 6 months of 2021. In the second 6 months of 2021, the number of births rose 3%–6% for non-Hispanic Asian, non-Hispanic White, and Hispanic women, and were not significantly changed for women in the other race and Hispanic-origin groups compared with declines of 2%–8% for women in nearly all groups for the first 6 months of 2021. In the second 6 months of 2021, births increased for 39 states, did not change significantly in 9 states and D.C., and declined in 2 states. In contrast to

changes in births for 2020–2021, births declined for each month and for most race and Hispanic-origin groups and states for 2019–2020.

Keywords: births • change • month • state • National Vital Statistics System

Introduction

From 2019 to 2020, the number of births declined for each month and most race and Hispanic-origin groups and states in the United States (1). A more recent report that analyzed trends in births in the United States for the first 6 months of 2021 found some continuation, although more modest, of a downward trend in births (2). This report describes changes occurring in the number of U.S. births overall and by race and Hispanic origin, month, and state of maternal residence for January through June and July through December 2021 compared with the same periods for 2020.

Methods

Data for 2021 are based on 99.94% of all birth records received and processed by the National Center for Health Statistics as of February 10, 2022 (3–6). The number of provisional 2021 births are compared with final 2020 counts. Changes in final birth counts from 2019 to 2020 are also described.

Hispanic origin and race are reported separately on the birth certificate. Data shown by Hispanic origin include all people of Hispanic origin of any race. Data for non-Hispanic people are

shown separately for each single-race group. Data by race are based on the revised standards issued by the Office of Management and Budget in 1997 (7). The race and Hispanic-origin groups shown are non-Hispanic, single-race White; non-Hispanic, single-race Black; non-Hispanic, single-race American Indian or Alaska Native (AIAN); non-Hispanic, single-race Asian; non-Hispanic, single-race Native Hawaiian or Other Pacific Islander (NHOPI); and Hispanic. For brevity, text references to race omit the term “single-race.”

The number of births for February 2020 was adjusted to account for the additional day in February 2020, compared with February 2021 and 2019 (that is, for the leap day, February 29). Both observed and adjusted numbers are shown for February 2020 in [Table 1](#); text comparisons by month are based on the adjusted February 2020 number of births. The number of births for the total year and for the first halves of 2021 and 2020 were not adjusted for leap day because of the relatively small impact of the additional births for February 29.

Births by state by month are not analyzed because of the small number of births by month for some states.

All changes in the number of births and differences in the changes mentioned in this report are statistically significant at the 0.05 level based on a chi-squared test, unless noted otherwise.

Findings shown in this report may differ from previously published findings because of the provisional nature of the data.

Results

Changes in the number of births by month

- From 2020 to 2021, the number of births declined for January (9%) and February (2%), were essentially unchanged for March and May, and then rose for April (1%) and for each month from June through December (1% to 7%). The largest increases were observed in November (6%) and December (7%) (Table 1 and Figure 1).
- In comparison, from 2019 to 2020, the number of births declined each month of the year by 1%–8% (Table 1).
- Compared with the first 6 months of 2020, the number of births declined for the first 6 months (January–June) of 2021 by 2%; the decline was largely driven by the 9% drop in births for January.
- The number of births increased a total of 4% in the second 6 months (July–December) of 2021.
- In comparison, for 2019–2020, births declined in both the first (2%) and second (5%) halves of the year (Table 1).

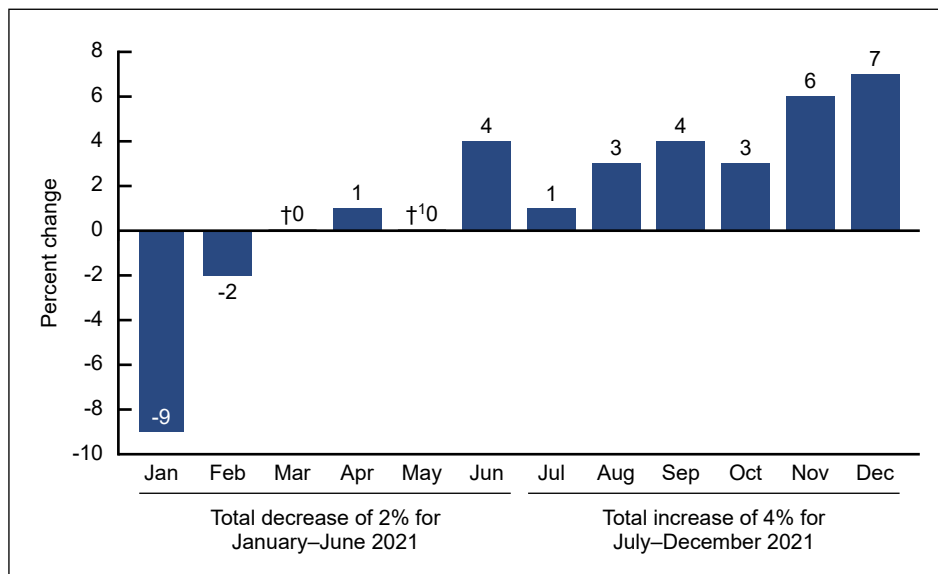
Changes in the number of births by maternal race and Hispanic origin

- The decline in births between 2020 and 2021 for the first half of the year was 2% for Hispanic women, 4% for non-Hispanic AIAN women, 5% each for non-Hispanic Black and non-Hispanic NHOPI women, and 8% for non-Hispanic Asian women. Births among non-Hispanic White women remained unchanged (Figure 2).
- For the second 6 months of 2021, births rose for non-Hispanic Asian (3%), non-Hispanic White (4%), and Hispanic (6%) women. The number of births did not change significantly for non-Hispanic Black (increase of less than 1%), non-Hispanic AIAN (decline of 2%), and non-Hispanic NHOPI (increase of 2%) women.
- In comparison, for the period 2019–2020, births declined for most groups in both the first and second 6 months of the year.

Changes in the number of births by state

- Comparing the first 6 months of 2020 and 2021, 16 states and the District of Columbia (D.C.) reported declines in the number of births, 4 states (Connecticut, Idaho, New Hampshire, and Tennessee) reported increases, and 30 states reported no significant changes (Table 2 and Figure 3).
- Comparing the second 6 months of 2020 and 2021, births increased for 39 states, did not change significantly for 9 states and D.C., and declined for 2 states.
- The largest increases occurred in Connecticut (10%), New Hampshire (9%), and Florida, Massachusetts, Rhode Island, and Vermont (8% each) (Table 2).
- In comparison, for the first 6 months of 2019 and 2020, the number of births declined for 20 states and did not change significantly for 30 states and D.C.; during the second 6 months, births declined for all states and D.C. (declines in 8 states were not significant) compared with the second 6 months of 2019.

Figure 1. Percent change in number of births, by month: United States, 2020 final and 2021 provisional



† No significant change ($p < 0.05$).

¹Number of births declined but was essentially unchanged from 2020 to 2021.

NOTE: Number of births for February 2020 was adjusted for leap day, February 29.

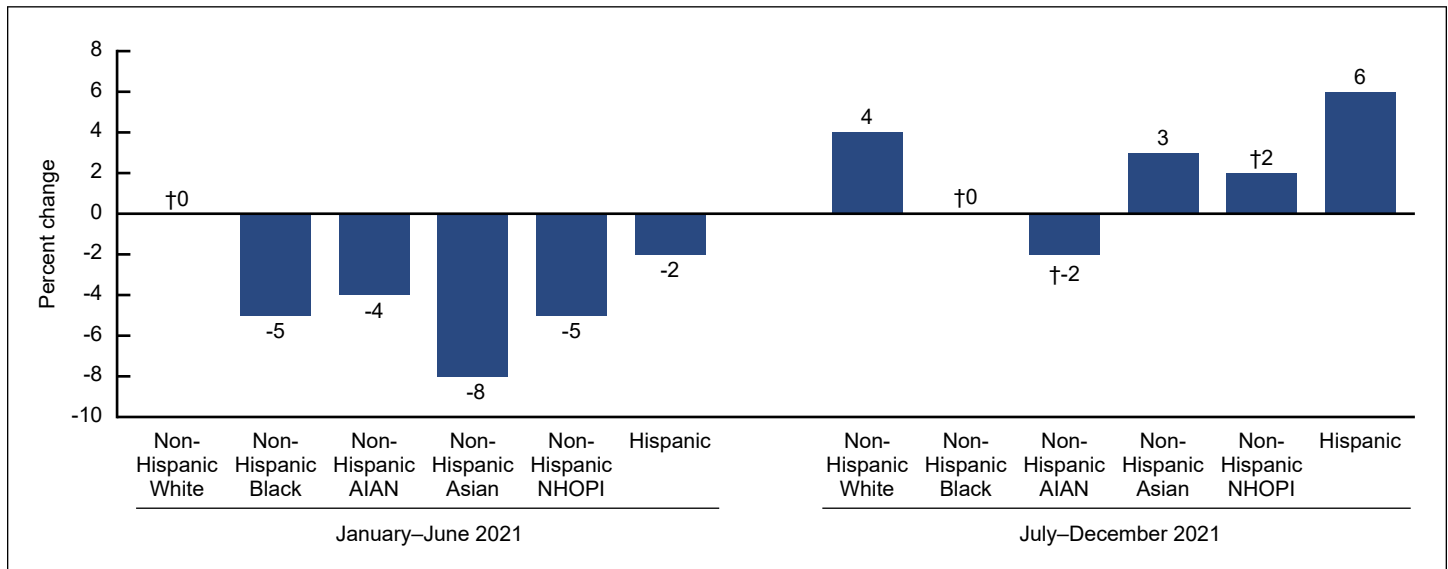
SOURCE: National Center for Health Statistics, National Vital Statistics System, Natality.

Summary

From 2020 to 2021, the number of births declined for January and February and rose for April and each month from June through December, resulting in an overall increase in the number of births for the second 6 months of 2021 (4%) compared with a decline in births for the first 6 months of the year (2%). For the second 6 months of 2021, births increased for non-Hispanic Asian (3%), non-Hispanic White (4%), and Hispanic (6%) women, in contrast to declines in births for most race and Hispanic-origin groups for the first 6 months of the year. The number of births increased for 39 states in the second 6 months of 2021, did not change significantly in 9 states and D.C., and declined in 2 states, whereas in the first 6 months of 2021, births increased in only 4 states, declined in 16 states and D.C., and did not change significantly in 30 states. In contrast, the

Vital Statistics Surveillance Report

Figure 2. Percent change in number of births, by race and Hispanic origin of mother: United States, January–June and July–December 2020 final and 2021 provisional



† No significant change ($p < 0.05$).
 NOTE: AIAN is American Indian or Alaska Native; NHOPI is Native Hawaiian or Other Pacific Islander.
 SOURCE: National Center for Health Statistics, National Vital Statistics System, Natality.

number of births declined from 2019 to 2020 in all months and for most race and Hispanic-origin groups and states.

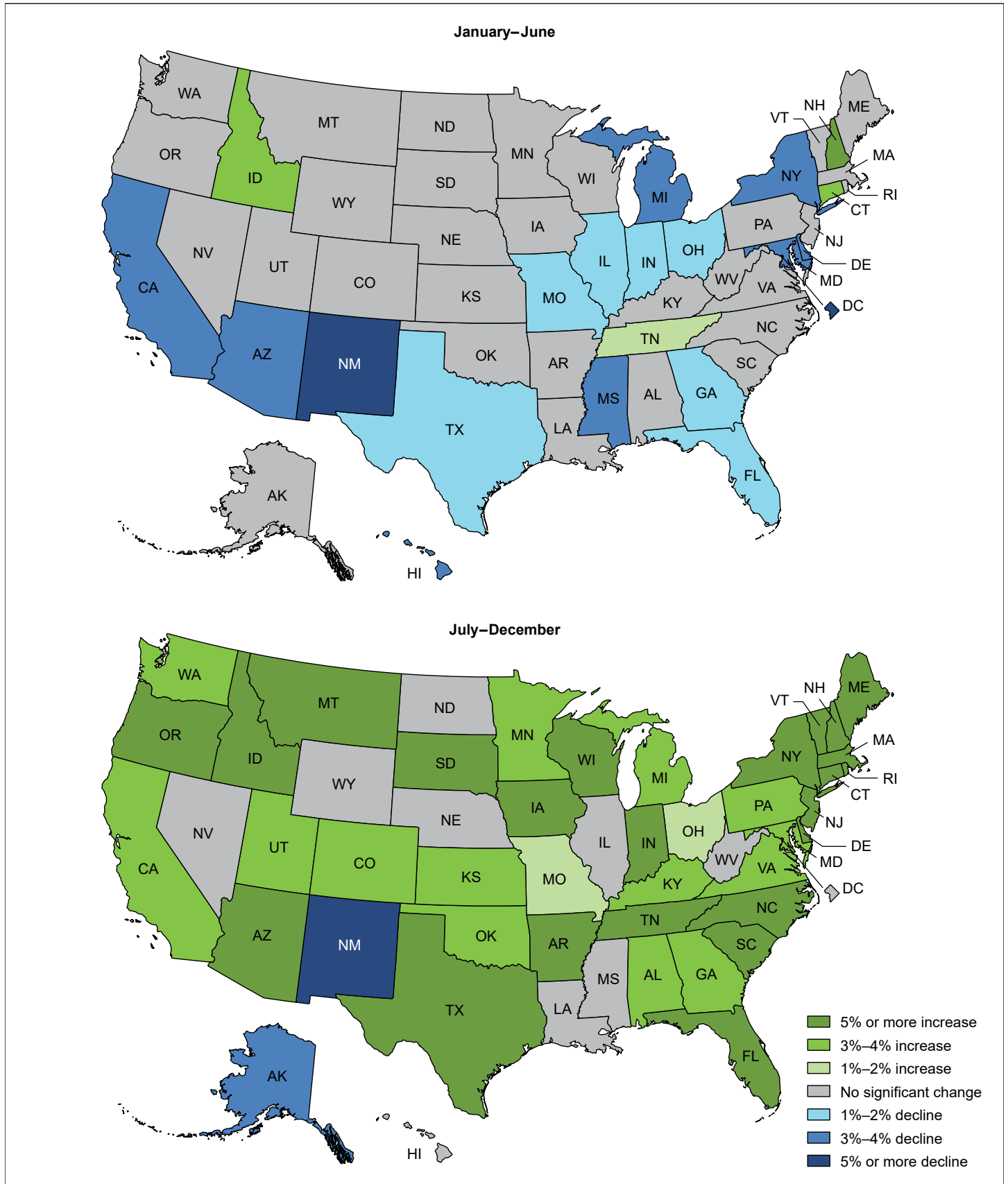
The 1% increase in the number of births in 2021 was the first increase in births since 2014 (3,8) but follows the large decline in births in 2020; despite the 1% increase, the number of births in 2021 was 2% lower than the number of births in 2019. While the overall decline in births for the first 6 months of 2021 (2%) was consistent with the annual decline for the previous 5 years, the decline was largely limited to the first 2 months of the year. The difference in trends observed between the first 2 months of the year and the last 7 months suggests that the downward trend seen in 2020 through the beginning of 2021 may have abated. Ongoing evaluation of trends in births by month will monitor whether the changes observed for the second 6 months of 2021 will continue into the next year.

References

- Hamilton BE, Osterman MJK, Martin JA. Declines in births by month: United States, 2020. Vital Statistics Rapid Release; no 14. Hyattsville, MD: National Center for Health Statistics. June 2021. DOI: <https://dx.doi.org/10.15620/cdc:106116>.
- Hamilton BE, Osterman MJK, Martin JA. Changes in births by month: United States, January 2019–June 2021. Vital Statistics Rapid Release; no 19. Hyattsville, MD: National Center for Health Statistics. March 2022. DOI: <https://dx.doi.org/10.15620/cdc:113283>.
- Hamilton BE, Martin JA, Osterman MJK. Births: Provisional data for 2021. Vital Statistics Rapid Release; no 20. Hyattsville, MD: National Center for Health Statistics. May 2022. DOI: <https://dx.doi.org/10.15620/cdc:116027>.
- Driscoll AK, Osterman MJK, Hamilton BE, Valenzuela CP, Martin JA. Quarterly provisional estimates for selected birth indicators, Quarter 1, 2019–Quarter 4, 2021. National Center for Health Statistics. National Vital Statistics System, Vital Statistics Rapid Release Program. 2022. Available from: <https://www.cdc.gov/nchs/nvss/vsrr/nativity-dashboard.htm>.
- National Center for Health Statistics. Quarterly provisional estimates–technical notes–natality, Quarter 4, 2021. 2022. Available from: <https://www.cdc.gov/nchs/nvss/vsrr/nativity-technical-notes.htm>.
- Osterman MJK, Valenzuela CP, Martin JA. Provisional estimates for selected maternal and infant outcomes by month, 2019–2021. National Center for Health Statistics. 2022. Available from: <https://www.cdc.gov/nchs/covid19/technical-notes-outcomes.htm>.
- Office of Management and Budget. Revisions to the standards for the classification of federal data on race and ethnicity. Fed Regist 62(210):58782–90. 1997. Available from: <https://www.govinfo.gov/content/pkg/FR-1997-10-30/pdf/97-28653.pdf>.
- Osterman MJK, Hamilton BE, Martin JA, Driscoll AK, Valenzuela CP. Births: Final data for 2020. National Vital Statistics Reports; vol 70 no 17. Hyattsville, MD: National Center for Health Statistics. 2022. DOI: <https://dx.doi.org/10.15620/cdc:112078>.

Vital Statistics Surveillance Report

Figure 3. Percent change in number of births, by state of residence: United States, January–June and July–December 2020 final and 2021 provisional



SOURCE: National Center for Health Statistics, National Vital Statistics System, Natality.

List of Detailed Tables

Report tables

1. Births, by race and Hispanic origin of the mother and month of birth: United States, January–December, final 2019 and 2020, and provisional 2021, and percent change in births from 2019–2020 and 2020–2021. 6
2. Births: United States and each state, January–June and July–December, final 2019 and 2020, and provisional 2021, and percent change in births from January–June and July–December 2019–2020 and 2020–2021. 9

Vital Statistics Surveillance Report

Table 1. Births, by race and Hispanic origin of the mother and month of birth: United States, January–December, final 2019 and 2020, and provisional 2021, and percent change in births from 2019–2020 and 2020–2021

Race and Hispanic origin of mother and year	Total	January–June	July–December	January	February (observed)	February (adjusted) ¹	March	April	May	June	July	August	September	October	November	December
All races and origins ²																
Number																
2021 ³	3,659,289	1,753,336	1,905,953	277,161	266,308	266,308	302,586	293,069	300,771	313,441	325,905	329,978	325,372	314,956	300,953	308,789
2020	3,613,647	1,783,124	1,830,523	304,722	282,654	272,907	301,625	290,478	301,481	302,164	321,637	319,621	311,705	305,085	282,597	289,878
2019	3,747,540	1,814,497	1,933,043	310,872	279,963	279,963	304,237	298,947	316,386	304,092	333,646	341,685	325,781	325,043	298,086	308,802
Non-Hispanic, single race ⁴																
White:																
2021 ³	1,884,554	917,436	967,118	142,206	138,965	138,965	159,338	154,304	157,828	164,795	168,163	169,635	165,325	159,746	151,323	152,926
2020	1,843,432	916,986	926,446	152,519	143,712	138,756	155,981	150,953	156,888	156,933	165,205	162,598	158,153	154,397	140,435	145,658
2019	1,915,912	937,741	978,171	156,819	142,992	142,992	157,502	156,516	165,587	158,325	172,130	174,284	165,366	165,035	148,646	152,710
Black:																
2021 ³	517,027	246,395	270,632	41,341	38,671	38,671	42,041	39,922	41,085	43,335	46,010	46,463	46,050	44,201	42,712	45,196
2020	529,811	259,759	270,052	46,356	42,037	40,587	43,591	41,395	42,999	43,381	46,434	46,792	45,250	44,217	42,605	44,754
2019	548,075	262,114	285,961	47,486	41,497	41,497	43,583	42,151	44,584	42,813	48,129	50,076	47,649	47,115	45,305	47,687
American Indian or Alaska Native:																
2021 ³	25,935	12,673	13,262	2,136	1,932	1,932	2,185	2,121	2,046	2,253	2,343	2,306	2,330	2,212	2,019	2,052
2020	26,813	13,234	13,579	2,292	2,048	1,977	2,213	2,195	2,240	2,246	2,417	2,420	2,331	2,233	2,005	2,173
2019	28,450	14,013	14,437	2,525	2,182	2,182	2,332	2,293	2,382	2,299	2,518	2,521	2,462	2,377	2,170	2,389
Asian:																
2021 ³	213,556	102,468	111,088	15,660	15,414	15,414	18,029	17,520	17,604	18,241	18,699	19,051	18,368	18,609	18,143	18,218
2020	219,068	110,811	108,257	19,303	17,678	17,068	19,268	17,986	18,696	17,880	18,996	18,770	18,139	18,561	17,302	16,489
2019	238,769	116,289	122,480	19,628	17,975	17,975	19,910	19,261	20,168	19,347	20,473	21,021	19,777	21,159	19,832	20,218
Native Hawaiian or Other Pacific Islander:																
2021 ³	9,517	4,452	5,065	799	617	617	753	733	818	732	842	863	849	849	796	866
2020	9,626	4,665	4,961	803	786	759	794	705	820	757	838	851	798	824	820	830
2019	9,770	4,695	5,075	790	762	762	814	738	847	744	843	888	815	852	792	885
Hispanic ⁵																
2021 ³	884,726	410,733	473,993	65,715	61,993	61,993	70,126	68,319	70,974	73,606	78,586	80,482	81,482	78,671	75,736	79,036
2020	866,713	420,563	446,150	73,601	67,466	65,140	70,361	68,000	70,085	71,050	77,005	77,448	76,819	74,719	69,853	70,306
2019	886,467	421,991	464,476	73,742	65,667	65,667	70,442	68,517	72,747	70,876	78,805	81,983	79,240	78,074	71,532	74,842

See footnotes at end of table.

Vital Statistics Surveillance Report

Table 1. Births, by race and Hispanic origin of the mother and month of birth: United States, January–December, final 2019 and 2020, and provisional 2021, and percent change in births from 2019–2020 and 2020–2021—Con.

Race and Hispanic origin of mother and year	Total	January–June	July–December	January	February (observed)	February (adjusted) ¹	March	April	May	June	July	August	September	October	November	December	
All races and origins ²																	
2020–2021	1	-2	4	-9	-6	-2	†0	1	†0	4	1	3	4	3	6	7	
2019–2020	-4	-2	-5	-2	1	-3	-1	-3	-5	-1	-4	-6	-4	-6	-5	-6	
Non-Hispanic, single race ⁴																	
White:																	
2020–								Percent change									
2021	2	†0	4	-7	-3	†0	2	2	†1	5	2	4	5	3	8	5	
2019–																	
2020	-4	-2	-5	-3	†1	-3	-1	-4	-5	-1	-4	-7	-4	-6	-6	-5	
Black:																	
2020–																	
2021	-2	-5	†0	-11	-8	-5	-4	-4	-4	†0	†-1	†-1	2	†0	†0	†1	
2019–																	
2020	-3	-1	-6	-2	†1	-2	†0	-2	-4	†1	-4	-7	-5	-6	-6	-6	
American Indian or Alaska Native:																	
2020–																	
2021	-3	-4	†-2	-7	†-6	†-2	†-1	†-3	-9	†0	†-3	†-5	†0	†-1	†1	†-6	
2019–																	
2020	-6	-6	-6	-9	-6	-9	†-5	†-4	-6	†-2	†-4	†-4	†-5	-6	-8	-9	
Asian:																	
2020–																	
2021	-3	-8	3	-19	-13	-10	-6	-3	-6	†2	†-2	†1	†1	†0	5	10	
2019–																	
2020	-8	-5	-12	†-2	†-2	-5	-3	-7	-7	-8	-7	-11	-8	-12	-13	-18	

See footnotes at end of table.

Vital Statistics Surveillance Report

Table 1. Births, by race and Hispanic origin of the mother and month of birth: United States, January–December, final 2019 and 2020, and provisional 2021, and percent change in births from 2019–2020 and 2020–2021—Con.

Race and Hispanic origin of mother and year	Total	January–June	July–December	January	February (observed)	February (adjusted) ¹	March	April	May	June	July	August	September	October	November	December
Native Hawaiian or Other Pacific Islander:																
					Percent change											
2020–2021	†-1	-5	†2	†0	-22	-19	†-5	†4	†0	†-3	†0	†1	†6	†3	†-3	†4
2019–2020	†-1	†-1	†-2	†2	†3	†0	†-2	†-4	†-3	†2	†-1	†-4	†-2	†-3	†4	†-6
Hispanic ⁵																
2020–2021	2	-2	6	-11	-8	-5	†0	†0	1	4	2	4	6	5	8	12
2019–2020	-2	†0	-4	†0	3	†-1	†0	†-1	-4	†0	-2	-6	-3	-4	-2	-6

† No significant change ($p < 0.05$).

0 Quantity more than zero but less than 0.5 or less than zero but more than -0.5.

¹Number of births for February 2020 adjusted for leap day, February 29.

²Includes births to race and origin groups not shown separately, such as Hispanic, single-race White; Hispanic, single-race Black; and non-Hispanic, multiple-race women, and births with origin not stated.

³Provisional 2021 data; based on 99.94% of births.

⁴Race and Hispanic origin are reported separately on birth certificates; people of Hispanic origin may be of any race. In this table, non-Hispanic women are classified by race. Race categories are consistent with the 1997 Office of Management and Budget standards. Single race is defined as only one race reported on the birth certificate.

⁵Includes all people of Hispanic origin of any race.

SOURCE: National Center for Health Statistics, National Vital Statistics System, Natality.

Vital Statistics Surveillance Report

Table 2. Births: United States and each state, January–June and July–December, final 2019 and 2020, and provisional 2021, and percent change in births from January–June and July–December 2019–2020 and 2020–2021

Reporting area	2019			2020			2021 ¹		
	Total	January–June	July–December	Total	January–June	July–December	Total	January–June	July–December
	Number								
Total	3,747,540	1,814,497	1,933,043	3,613,647	1,783,124	1,830,523	3,659,289	1,753,336	1,905,953
Alabama	58,615	27,778	30,837	57,647	28,055	29,592	58,032	27,648	30,384
Alaska	9,822	4,881	4,941	9,469	4,712	4,757	9,258	4,692	4,566
Arizona	79,375	38,168	41,207	76,947	37,441	39,506	77,891	36,111	41,780
Arkansas	36,564	17,439	19,125	35,251	17,194	18,057	35,902	16,909	18,993
California	446,479	216,456	230,023	420,259	207,163	213,096	420,031	199,173	220,858
Colorado	62,869	30,590	32,279	61,494	30,524	30,970	62,900	31,010	31,890
Connecticut	34,258	16,752	17,506	33,460	16,617	16,843	35,646	17,115	18,531
Delaware	10,562	4,963	5,599	10,392	5,061	5,331	10,477	4,864	5,613
District of Columbia	9,079	4,364	4,715	8,874	4,470	4,404	8,644	4,104	4,540
Florida	220,002	105,184	114,818	209,671	102,493	107,178	216,236	101,001	115,235
Georgia	126,371	60,855	65,516	122,473	60,051	62,422	123,939	58,894	65,045
Hawaii	16,797	8,191	8,606	15,785	7,837	7,948	15,565	7,554	8,011
Idaho	22,063	10,896	11,167	21,533	10,645	10,888	22,426	10,999	11,427
Illinois	140,128	68,353	71,775	133,298	66,113	67,185	132,117	64,679	67,438
Indiana	80,859	38,992	41,867	78,616	38,864	39,752	79,760	37,967	41,793
Iowa	37,649	18,518	19,131	36,114	18,025	18,089	36,783	17,819	18,964
Kansas	35,395	17,130	18,265	34,376	16,926	17,450	34,690	16,719	17,971
Kentucky	53,069	25,520	27,549	51,668	25,227	26,441	52,144	25,025	27,119
Louisiana	58,941	27,849	31,092	57,328	27,634	29,694	57,218	27,309	29,909
Maine	11,779	5,772	6,007	11,539	5,683	5,856	12,003	5,782	6,221
Maryland	70,178	34,035	36,143	68,554	34,014	34,540	68,262	32,797	35,465
Massachusetts	69,117	33,601	35,516	66,428	33,366	33,062	69,142	33,406	35,736
Michigan	107,886	53,014	54,872	104,074	52,286	51,788	104,830	50,921	53,909
Minnesota	66,027	32,474	33,553	63,443	31,800	31,643	64,398	31,392	33,006
Mississippi	36,636	17,233	19,403	35,473	17,193	18,280	35,146	16,679	18,467
Missouri	72,127	35,046	37,081	69,285	34,234	35,051	69,375	33,711	35,664
Montana	11,079	5,546	5,533	10,791	5,499	5,292	11,222	5,555	5,667
Nebraska	24,755	12,152	12,603	24,291	12,091	12,200	24,555	12,171	12,384
Nevada	35,072	16,798	18,274	33,653	16,356	17,297	33,655	16,033	17,622
New Hampshire	11,839	5,732	6,107	11,791	5,788	6,003	12,615	6,092	6,523

See footnotes at end of table.

Vital Statistics Surveillance Report

Table 2. Births: United States and each state, January–June and July–December, final 2019 and 2020, and provisional 2021, and percent change in births from January–June and July–December 2019–2020 and 2020–2021—Con.

Reporting area	2019			2020			2021 ¹		
	Total	January–June	July–December	Total	January–June	July–December	Total	January–June	July–December
					Number				
New Jersey	99,585	48,245	51,340	97,954	48,583	49,371	101,457	48,572	52,885
New Mexico	22,960	11,048	11,912	21,903	10,756	11,147	20,910	10,266	10,644
New York	221,539	107,791	113,748	209,338	105,532	103,806	210,359	101,774	108,585
North Carolina	118,725	57,371	61,354	116,730	57,417	59,313	119,792	57,235	62,557
North Dakota	10,454	5,275	5,179	10,059	5,017	5,042	10,108	5,009	5,099
Ohio	134,461	65,303	69,158	129,191	63,879	65,312	129,717	63,003	66,714
Oklahoma	49,143	23,607	25,536	47,623	23,371	24,252	48,350	23,241	25,109
Oregon	41,858	20,937	20,921	39,820	19,999	19,821	40,868	19,823	21,045
Pennsylvania	134,230	65,204	69,026	130,693	64,667	66,026	132,401	64,195	68,206
Rhode Island	10,175	4,993	5,182	10,101	5,064	5,037	10,458	4,999	5,459
South Carolina	57,038	27,515	29,523	55,704	27,152	28,552	57,129	27,232	29,897
South Dakota	11,449	5,686	5,763	10,960	5,520	5,440	11,368	5,642	5,726
Tennessee	80,450	38,715	41,735	78,689	38,248	40,441	81,675	38,991	42,684
Texas	377,599	179,973	197,626	368,190	178,420	189,770	373,340	174,630	198,710
Utah	46,826	23,175	23,651	45,702	23,084	22,618	46,701	23,094	23,607
Vermont	5,361	2,689	2,672	5,133	2,580	2,553	5,383	2,621	2,762
Virginia	97,429	47,295	50,134	94,749	46,863	47,886	95,544	46,396	49,148
Washington	84,895	42,165	42,730	83,086	41,484	41,602	83,838	40,927	42,911
West Virginia	18,136	8,767	9,369	17,323	8,530	8,793	17,080	8,308	8,772
Wisconsin	63,270	31,144	32,126	60,594	30,568	30,026	61,719	30,181	31,538
Wyoming	6,565	3,317	3,248	6,128	3,028	3,100	6,230	3,066	3,164

See footnotes at end of table.

Vital Statistics Surveillance Report

Table 2. Births: United States and each state, January–June and July–December, final 2019 and 2020, and provisional 2021, and percent change in births from January–June and July–December 2019–2020 and 2020–2021—Con.

Reporting area	2019–2020			2020–2021		
	Total	January–June	July–December	Total	January–June	July–December
	Percent change					
Total	-4	-2	-5	1	-2	4
Alabama	-2	†1	-4	†1	†-1	3
Alaska	-4	†-3	†-4	†-2	†0	-4
Arizona	-3	-2	-4	1	-4	6
Arkansas	-4	†-1	-6	2	†-2	5
California	-6	-4	-7	†0	-4	4
Colorado	-2	†0	-4	2	†2	3
Connecticut	-2	†-1	-4	7	3	10
Delaware	†-2	†2	-5	†1	-4	5
District of Columbia	†-2	†2	-7	†-3	-8	†3
Florida	-5	-3	-7	3	-1	8
Georgia	-3	-1	-5	1	-2	4
Hawaii	-6	-4	-8	†-1	-4	†1
Idaho	-2	†-2	†-2	4	3	5
Illinois	-5	-3	-6	-1	-2	†0
Indiana	-3	†0	-5	1	-2	5
Iowa	-4	-3	-5	2	†-1	5
Kansas	-3	†-1	-4	†1	†-1	3
Kentucky	-3	†-1	-4	†1	†-1	3
Louisiana	-3	†-1	-4	†0	†-1	†1
Maine	†-2	†-2	†-3	4	†2	6
Maryland	-2	†0	-4	†0	-4	3
Massachusetts	-4	†-1	-7	4	†0	8
Michigan	-4	-1	-6	†1	-3	4
Minnesota	-4	-2	-6	2	†-1	4
Mississippi	-3	†0	-6	†-1	-3	†1
Missouri	-4	-2	-5	†0	-2	2
Montana	†-3	†-1	-4	4	†1	7
Nebraska	-2	†-1	-3	†1	†1	†2
Nevada	-4	-3	-5	†0	†-2	†2
New Hampshire	†0	†1	†-2	7	5	9
New Jersey	-2	†1	-4	4	†0	7
New Mexico	-5	-3	-6	-5	-5	-5
New York	-6	-2	-9	†0	-4	5
North Carolina	-2	†0	-3	3	†0	5
North Dakota	-4	-5	†-3	†0	†0	†1
Ohio	-4	-2	-6	†0	-1	2
Oklahoma	-3	†-1	-5	2	†-1	4
Oregon	-5	-4	-5	3	†-1	6
Pennsylvania	-3	†-1	-4	1	†-1	3
Rhode Island	†-1	†1	†-3	4	†-1	8
South Carolina	-2	†-1	-3	3	†0	5
South Dakota	-4	†-3	-6	4	†2	5
Tennessee	-2	†-1	-3	4	2	6
Texas	-2	-1	-4	1	-2	5
Utah	-2	†0	-4	2	†0	4
Vermont	-4	†-4	†-4	5	†2	8
Virginia	-3	†-1	-4	†1	†-1	3
Washington	-2	-2	-3	†1	†-1	3
West Virginia	-4	†-3	-6	†-1	†-3	†0
Wisconsin	-4	-2	-7	2	†-1	5
Wyoming	-7	-9	†-5	†2	†1	†2

† No significant change ($p < 0.05$).

0 Quantity more than zero but less than 0.5 or less than zero but more than -0.5.

¹Provisional 2021 data; based on 99.94% of births.

SOURCE: National Center for Health Statistics, National Vital Statistics System, Natality.

Acknowledgments

This report was prepared in the Division of Vital Statistics (DVS) under the general direction of Steven Schwartz, Director; Isabelle Horon, Chief, Reproductive Statistics Branch (RSB); and Joyce Martin, Team Leader, RSB Birth Team. Rajesh Virkar, Chief, Information Technology Branch (ITB), and Jasmine N. Mickens, Steve J. Steimel, Annie S. Liu, and Legesse Alemu of ITB provided computer programming support and statistical tables. Jasmine N. Mickens, Steve J. Steimel, and Annie S. Liu also prepared the natality file. The Registration Methods and Data Acquisition, Classification and Evaluation Branch staff of DVS evaluated the quality of and acceptance procedures for the state data files on which this report is based.

Suggested citation

Hamilton BE, Osterman MJK, Martin JA. Changes in births by month: United States, 2021. Vital Statistics Rapid Release; no 22. Hyattsville, MD: National Center for Health Statistics. July 2022. DOI: <https://dx.doi.org/10.15620/cdc:117899>.

Copyright information

All material appearing in this report is in the public domain and may be reproduced or copied without permission; citation as to source, however, is appreciated.

National Center for Health Statistics

Brian C. Moyer, Ph.D., *Director*

Amy M. Branum, Ph.D., *Associate Director for Science*

Division of Vital Statistics

Steven Schwartz, Ph.D., *Director*

Andrés A. Berruti, Ph.D. M.A., *Associate Director for Science*