

National Center for Health Statistics  
1997 Joint Meeting of the  
Public Health Conference on Records and Statistics  
and the Data Users Conference



## Partnerships, Technologies & Communities: Evolving Roles for Health Data

# Program

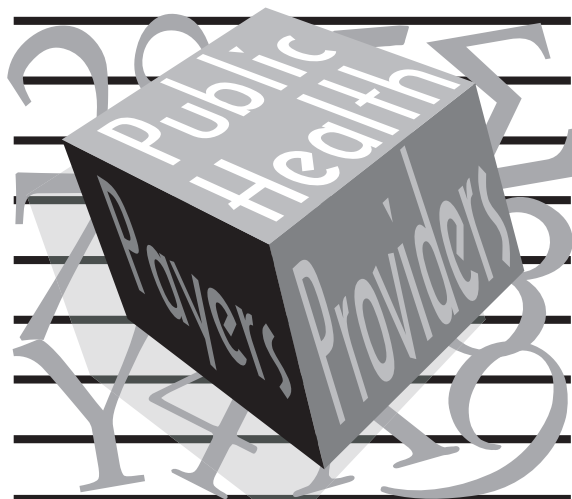
July 28-31, 1997 - Omni Shoreham Hotel - Washington, D.C.



U.S. DEPARTMENT OF HEALTH AND HUMAN SERVICES  
Centers for Disease Control and Prevention  
National Center for Health Statistics



National Center for Health Statistics  
1997 Joint Meeting of the  
Public Health Conference on Records and Statistics  
and the Data Users Conference



Partnerships, Technologies  
& Communities: Evolving  
Roles for Health Data

# Program

July 28-31, 1997 - Omni Shoreham Hotel - Washington, D.C.

U.S. DEPARTMENT OF HEALTH AND HUMAN SERVICES  
Centers for Disease Control and Prevention  
National Center for Health Statistics

# Program Committee

---

## Co-chairpersons

Robert J. Weinzimer  
P. Douglas Williams

## Members

Robert J. Armstrong  
Anjani Chandra, Ph.D.  
Mary Ann Guadagno, Ph.D.  
Gerry E. Hendershot, Ph.D.  
Clifford L. Johnson, M.S.P.H.  
Michael J. Kremer  
Jeffrey H. Lancashire  
Manoo K. Nozary  
P. Ellen Parsons, Ph.D.  
Christine M. Plepys, M.S.  
Stephen L. Sloan

## Staff

Barbara P. Butler  
Barbara W. Hetzler  
Sabra F. Lloyd  
Tammy M. Stewart-Prather  
Linda R. Washington

# Staff

---

## **Conference Staff**

Jacquelyn L. Adler  
Barbara P. Butler  
Elizabeth T. Darling  
Barbara W. Hetzler  
Gracie V. White  
P. Douglas Williams  
Mary O. Young

## **Exhibits and Publications Support Staff**

Joan D. Burton  
Sarah M. Hinkle  
Zung T. N. Le  
Sabra F. Lloyd  
Demarius V. Miller  
Tommy C. Seibert  
Stephen L. Sloan  
Tammy M. Stewart-Prather  
Linda R. Washington  
Patty L. Wilson

# Contents

---

Program Committee .....	iii
Staff and Exhibits and Publications Support Staff .....	iv
For Your Information .....	1
Hotel Floor Plan .....	4
Conference Week at a Glance .....	6
Conference Sessions .....	8
Where to Find It .....	11
Conference headquarters, registration, exhibit area, message board and lost and found, Business Center, and conference proceedings	
Exhibit Area .....	12
First Plenary Session .....	13
Health Information Partnerships—National, State, and Local	
Concurrent Session A .....	14
Using the 1995 National Survey of Family Growth: Why and How	
Concurrent Session B .....	15
Essential Elements of an Assessment Process in a State Health Department	
Concurrent Session C .....	16
National Health Care Survey	
Concurrent Session D .....	17
Partnerships between Public Health and Managed Care for Improved Information	
Concurrent Session E .....	18
1993 National Mortality Followback Survey	
Concurrent Session F .....	19
Community Health Assessment	

---

Concurrent Session G . . . . .	20
Getting Ready for the Next Millennium: Health Promotion and Disease Prevention Objectives for the Year 2010	
Concurrent Session H . . . . .	21
Public/Private Health Information Partnerships	
Poster Presentations . . . . .	22
Second Plenary Session . . . . .	24
Information Technology and Informatics	
Concurrent Session I . . . . .	25
Methodological Approaches to Confidentiality Problems Associated with Contextual Data Files	
Concurrent Session J . . . . .	26
Technology for PC Access to Large Datasets	
Concurrent Session K . . . . .	27
Accelerating Production of Vital Statistics: Building the Current Flow System	
Concurrent Session L . . . . .	28
Survey Integration: Vertical and Horizontal	
Concurrent Session M . . . . .	29
Role of the Office of Research and Methodology in NCHS Programs	
Concurrent Session N . . . . .	30
Modeling Data for Small Areas	
Concurrent Session O . . . . .	31
Use of the Internet for Information Dissemination	
Concurrent Session P . . . . .	32
Ethical Issues: Incorporating Genetics into Public Health Data	
Concurrent Session Q . . . . .	33
Geographic Information Systems: An Exploratory Tool for Disease Surveillance and Analysis	

---

Concurrent Session R . . . . .	34
Opportunities for Data Linkage: Technology Solutions for Confidentiality Issues in the Use of Survey and Administrative Data	
Concurrent Session S . . . . .	35
Data Standards and Integrated Data Systems	
Concurrent Session T . . . . .	36
The Interactive Internet: Moving Beyond Fixed Products	
Poster Presentations . . . . .	37
Third Plenary Session . . . . .	39
Communities at Risk	
Concurrent Session U . . . . .	40
New Features of the National Health Interview Survey	
Concurrent Session V . . . . .	41
African American Health	
Concurrent Session W . . . . .	42
Access to Mental Health Services	
Concurrent Session X . . . . .	43
HIV/AIDS Data Needs and Uses for Prevention and Health Care	
Concurrent Session Y . . . . .	44
New Disability Data from the National Health Interview Survey	
Concurrent Session Z . . . . .	45
Implications of Managed Care for Hispanic Health	
Concurrent Session AA . . . . .	46
Race, Ethnicity, and Socioeconomic Status: A Research Perspective	
Concurrent Session BB . . . . .	47
Women’s Health	
Concurrent Session CC . . . . .	48
National Health and Nutrition Examination Survey—What’s Available from NHANES III and Plans for NHANES IV	

---

Concurrent Session DD .....	49
Asian American Health: Data Findings and Data Needs	
Concurrent Session EE .....	50
Physical Disability	
Concurrent Session FF .....	51
Health in the Context of Communities	
Poster Presentations.....	52
Concurrent Session GG .....	54
Survey Data: Analytical Limitations and Practical Solutions— the NHANES III Experience	
Concurrent Session HH .....	55
Native American Health	
Concurrent Session II .....	56
Children and Families	
Concurrent Session JJ .....	57
The Challenges of Managed Care for Older Persons	
Concurrent Session KK .....	58
1994 National Employer Health Insurance Survey	
Concurrent Session LL .....	59
The Health and Health Care of Immigrants to the United States	
Concurrent Session MM.....	60
Violence, Neglect, and Abuse	
Concurrent Session NN .....	61
Monitoring the Health and Health Care of the Poor and Underserved	
Program Session Organizers .....	62
Program Session Chairpersons.....	65
Program Session Presenters .....	69
Poster Presenters .....	84



## For Your Information

---

### **About the Conference . . .**

Since 1958 the National Center for Health Statistics (NCHS) has sponsored the Public Health Conference on Records and Statistics (PHCRS) as a biennial national meeting. This 26th PHCRS, with the theme "Partnerships, Technologies, and Communities: Evolving Roles for Health Data" provides a forum for representatives from Federal, State, and local government as well as universities and professional associations to share their statistical knowledge and experience. This diverse gathering lends a rich variety of perspectives on current issues concerning health information in the United States. Technical and philosophical issues are brought to light during each Conference session, and the proceedings serve as a valuable reference in addressing current issues.

NCHS has presented information about its data systems since 1982 via the Data Users Conference (DUC) held biennially. In-depth information about the design, content, access, and analysis of each data system is presented that leads to enhanced user capabilities. This is the first joint PHCRS/DUC effort produced by NCHS. It is hoped that presenting data systems information along with explicit applications in public health practice settings will enhance the utility of all elements of this joint Conference.

### **About the National Center for Health Statistics . . .**

The mission of NCHS is to provide statistical information that will guide actions and policies to improve the health of the American people. As the Nation's principal health statistics agency, NCHS designs, develops, and maintains more than a dozen data systems that cover the full spectrum of health concerns. These data systems provide essential information to policy makers, to researchers, and to others in the health community.

The NCHS data systems can be used to profile the health of Americans, to track demographic shifts and trends, to monitor change in health and health care, to show relationships between risk factors and health outcomes, and to provide information for prevention, evaluation, research, planning, and policy. They respond to changes in health care and in social and economic policies that impact health and health care. Most recently, emerging diseases, changes in health care delivery, and new directions in health policy have meant new data systems, new topics, and new methods of collecting and disseminating data.

To fulfill its mission, NCHS works closely with other researchers, Federal and State agencies, and academic institutions to determine and prioritize data needs for public health. In

---

partnership with others, NCHS works to improve statistical methodology, establish statistical policy, coordinate statistical systems, and advance health statistics through research. Throughout these activities, NCHS continues to lead the way in providing accurate, relevant, and timely data.

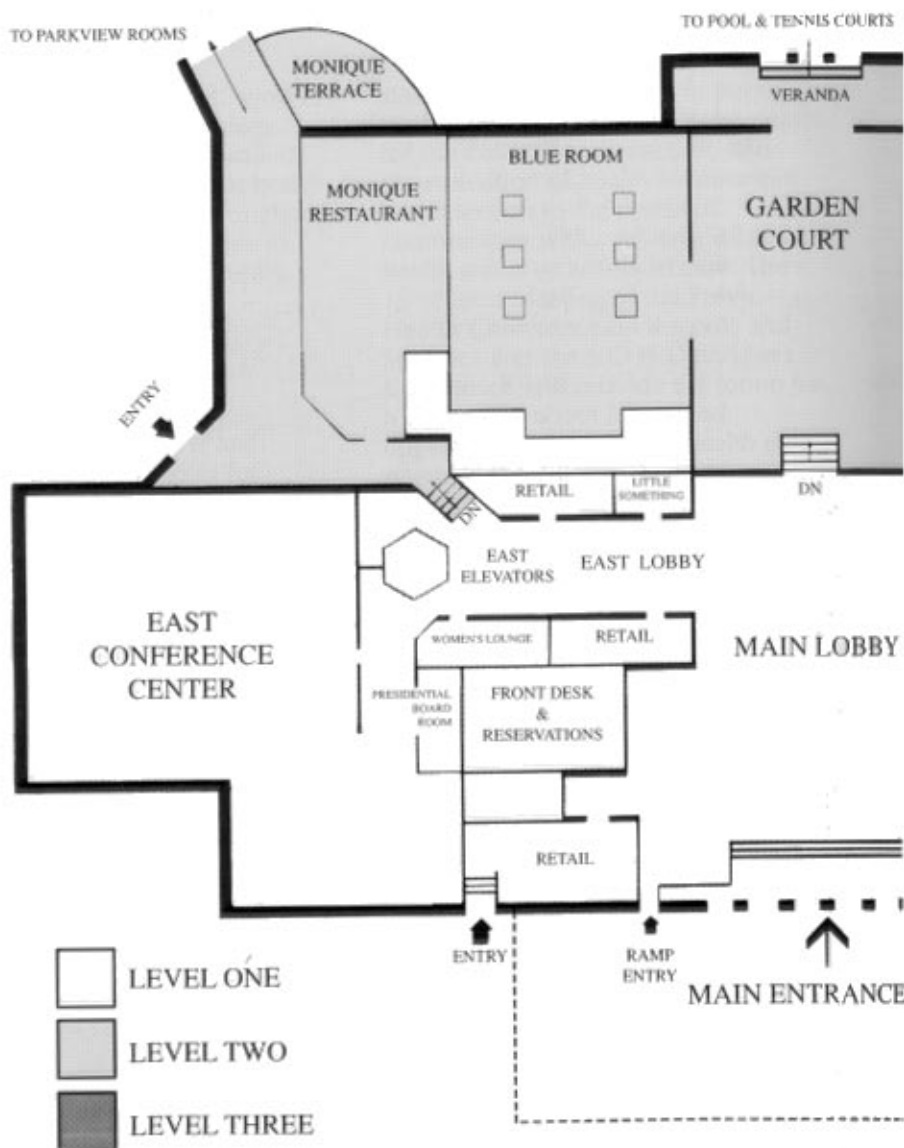
### **About the Topic . . .**

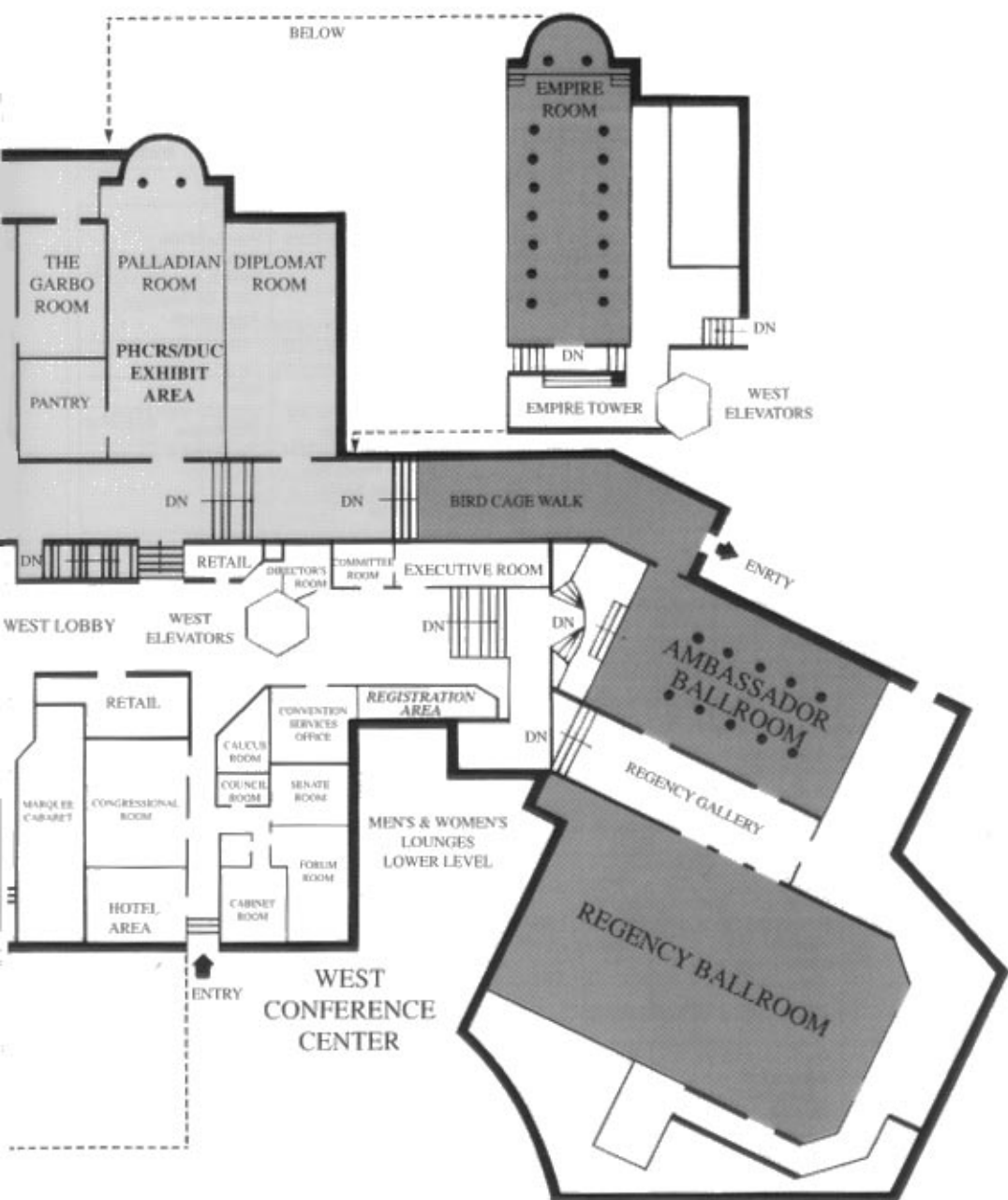
“Partnerships, Technologies, and Communities: Evolving Roles for Health Data” is the theme of the 1997 Conference. Rapid, extensive changes in information technology and in the health care system are providing public health with new opportunities to influence the provision of preventive services and to monitor the health of populations. Making the most of these opportunities requires collaboration and health information sharing among the various

stakeholders and partners in public health; utilization of new technologies for the collection, protection, and dissemination of health information; and attention to the needs of communities with problems related to health status or access to care. The 1997 Joint Meeting of the Public Health Conference on Records and Statistics and the NCHS Data Users Conference will provide the forum for a discussion about issues and opportunities for meeting health data needs in the current changing environment.



# Hotel Floor Plan





## Conference Week at a Glance

<b>Monday, July 28</b>				
<b>9:00-10:00</b>	<b>Opening Ceremony</b>			
<b>10:00-10:30</b>	<b>Break</b>			
<b>10:30-12:00</b>	<b>First Plenary Session</b> Health Information Partnerships—National, State, and Local			
<b>12:00 -1:30</b>	Lunch			
<b>Concurrent Sessions</b>				
<b>1:30-3:00</b>	<b>A</b> Using the 1995 National Survey of Family Growth: Why and How	<b>B</b> Essential Elements of an Assessment Process in a State Health Department	<b>C</b> National Health Care Survey	<b>D</b> Partnerships between Public Health and Managed Care for Improved Information
<b>3:00-3:30</b>	<b>Break</b>			
<b>3:30-5:00</b>	<b>E</b> 1993 National Mortality Followback Survey	<b>F</b> Community Health Assessment	<b>G</b> Getting Ready for the Next Millennium: Health Promotion and Disease Prevention Objectives for the Year 2010	<b>H</b> Public/Private Health Information Partnerships
<b>Tuesday, July 29</b>				
<b>9:00-10:00</b>	<b>Second Plenary Session</b> Information Technology and Informatics			
<b>10:00-10:30</b>	<b>Break</b>			
<b>Concurrent Sessions</b>				
<b>10:30-12:00</b>	<b>I</b> Methodological Approaches to Confidentiality Problems Associated with Contextual Data Files	<b>J</b> Technology for PC Access to Large Datasets	<b>K</b> Accelerating Production of Vital Statistics: Building the Current Flow System	<b>L</b> Survey Integration: Vertical and Horizontal
<b>12:00-1:30</b>	<b>Lunch</b>			
<b>1:30-3:00</b>	<b>M</b> Role of the Office of Research and Methodology in NCHS Programs	<b>N</b> Modeling Data for Small Areas	<b>O</b> Use of the Internet for Information Dissemination	<b>P</b> Ethical Issues: Incorporating Genetics into Public Health Data
<b>3:00-3:30</b>	<b>Break</b>			
<b>3:30-5:00</b>	<b>Q</b> Geographic Information Systems: An Exploratory Tool for Disease Surveillance and Analysis	<b>R</b> Opportunities for Data Linkage: Technology Solutions for Confidentiality Issues in the Use of Survey and Administrative Data	<b>S</b> Data Standards and Integrated Data Systems	<b>T</b> The Interactive Internet: Moving Beyond Fixed Products

<b>Wednesday, July 30</b>				
<b>9:00-10:00</b>	<b>Third Plenary Session</b> Communities at Risk			
<b>10:00-10:30</b>	<b>Break</b>			
<b>Concurrent Sessions</b>				
<b>10:30-12:00</b>	<b>U</b> New Features of the National Health Interview Survey	<b>V</b> African American Health	<b>W</b> Access to Mental Health Services	<b>X</b> HIV/AIDS Data Needs and Uses for Prevention and Health Care
<b>12:00-1:30</b>	<b>Lunch</b>			
<b>1:30-3:00</b>	<b>Y</b> New Disability Data from the National Health Interview Survey	<b>Z</b> Implications of Managed Care for Hispanic Health	<b>AA</b> Race, Ethnicity, and Socioeconomic Status: A Research Perspective	<b>BB</b> Women's Health
<b>3:00-3:30</b>	<b>Break</b>			
<b>3:30-5:00</b>	<b>CC</b> National Health and Nutrition Examination Survey—What's available from NHANES III and Plans for NHANES IV	<b>DD</b> Asian American Health: Data Findings and Data Needs	<b>EE</b> Physical Disability	<b>FF</b> Health in the Context of Communities
<b>Thursday, July 31</b>				
<b>Concurrent Sessions</b>				
<b>9:00-10:30</b>	<b>GG</b> Survey Data: Analytical Limitations and Practical Solutions—the NHANES III Experience	<b>HH</b> Native American Health	<b>II</b> Children and Families	<b>JJ</b> The Challenges of Managed Care for Older Persons
<b>10:30-11:00</b>	<b>Break</b>			
<b>11:00-12:30</b>	<b>KK</b> 1994 National Employer Health Insurance Survey	<b>LL</b> The Health and Health Care of Immigrants to the United States	<b>MM</b> Violence, Neglect, and Abuse	<b>NN</b> Monitoring the Health and Health Care of the Poor and Underserved
<b>12:30</b>	<b>Adjourn</b>			

**Exhibits and Posters**  
**9 a.m.–4:30 p.m. Monday - Wednesday only**

## Conference Sessions

---

### Monday, July 28

---

#### Opening Ceremony

9 to 10 a.m.

*Break 10 to 10:30 a.m.*

#### First Plenary Session

10:30 a.m. to 12 noon

Health Information Partnerships—  
National, State, and Local

*Lunch Break 12 noon to 1:30 p.m.*

#### Concurrent Afternoon Sessions

1:30 to 3 p.m.

**(A) Using the 1995 National Survey of  
Family Growth: Why and How**

**(B) Essential Elements of an  
Assessment Process in a State Health  
Department**

**(C) National Health Care Survey**

**(D) Partnerships between Public  
Health and Managed Care for  
Improved Information**

*Break 3 to 3:30 p.m.*

#### Concurrent Afternoon Sessions

3:30 to 5 p.m.

**(E) 1993 National Mortality  
Followback Survey**

**(F) Community Health Assessment**

**(G) Getting Ready for the Next  
Millennium: Health Promotion and  
Disease Prevention Objectives for the  
Year 2010**

**(H) Public/Private Health Information  
Partnerships**

### Tuesday, July 29

---

#### Second Plenary Session

9 to 10 a.m.

Information Technology and  
Informatics

*Break 10 to 10:30 a.m.*

#### Concurrent Morning Sessions

10:30 a.m. to 12 noon

**(I) Methodological Approaches to  
Confidentiality Problems Associated  
with Contextual Data Files**

**(J) Technology for PC Access to Large  
Datasets**

**(K) Accelerating Production of Vital  
Statistics: Building the Current Flow  
System**

**(L) Survey Integration: Vertical and  
Horizontal**

*Lunch Break 12 noon to 1:30 p.m.*



---

### **Concurrent Afternoon Sessions**

1:30 to 3 p.m.

**(M) Role of the Office of Research and Methodology in NCHS Programs**

**(N) Modeling Data for Small Areas**

**(O) Use of the Internet for Information Dissemination**

**(P) Ethical Issues: Incorporating Genetics into Public Health Data**

*Break 3 to 3:30 p.m.*

### **Concurrent Afternoon Sessions**

3:30 to 5 p.m.

**(Q) Geographic Information Systems: An Exploratory Tool for Disease Surveillance and Analysis**

**(R) Opportunities for Data Linkage: Technology Solutions for Confidentiality Issues in the Use of Survey and Administrative Data**

**(S) Data Standards and Integrated Data Systems**

**(T) The Interactive Internet: Moving Beyond Fixed Products**

---

### **Wednesday, July 30**

---

#### **Third Plenary Session**

9 to 10 a.m.

Communities at Risk

*Break 10 to 10:30 a.m.*

#### **Concurrent Morning Sessions**

10:30 a.m. to 12 noon

**(U) New Features of the National Health Interview Survey**

**(V) African American Health**

**(W) Access to Mental Health Services**

**(X) HIV/AIDS Data Needs and Uses for Prevention and Health Care**

*Lunch Break 12 noon to 1:30 p.m.*

#### **Concurrent Afternoon Sessions**

1:30 to 3 p.m.

**(Y) New Disability Data from the National Health Interview Survey**

**(Z) Implications of Managed Care for Hispanic Health**

**(AA) Race, Ethnicity, and Socioeconomic Status: A Research Perspective**

**(BB) Women's Health**

*Break 3 to 3:30 p.m.*

---

**Concurrent Afternoon Sessions**

3:30 to 5 p.m.

**(CC) National Health and Nutrition Examination Survey—What’s available from NHANES III and Plans for NHANES IV**

**(DD) Asian American Health: Data Findings and Data Needs**

**(EE) Physical Disability**

**(FF) Health in the Context of Communities**

---

**Thursday, July 31**

---

**Concurrent Morning Sessions**

9 to 10:30 a.m.

**(GG) Survey Data: Analytical Limitations and Practical Solutions—the NHANES III Experience**

**(HH) Native American Health**

**(II) Children and Families**

**(JJ) The Challenges of Managed Care for Older Persons**

*Break 10:30 to 11 a.m.*

**Concurrent Morning Sessions**

11 a.m. to 12:30 p.m.

**(KK) 1994 National Employer Health Insurance Survey**

**(LL) The Health and Health Care of Immigrants to the United States**

**(MM) Violence, Neglect, and Abuse**

**(NN) Monitoring the Health and Health Care of the Poor and Underserved**

Adjourn 12:30 p.m.

## Where to Find It

---

### **Conference Headquarters**

All Conference sessions will be held at the Omni Shoreham Hotel, located at 2500 Calvert Street, NW, Washington, DC 20008. Metro RED Line, Woodley Park-Zoo Stop. Telephone: 202-234-0700.

### **Registration**

The registration desk is located in the West Lobby on the main floor and will be open the following hours:

Sunday, July 27  
1 to 6 p.m.

Monday, July 28 through  
Wednesday, July 30  
8 a.m. to 5 p.m.

Thursday, July 31  
8 a.m. to 12:30 p.m.

### **Exhibit Area**

Conference exhibits are located in the Palladian Room. They can be viewed on Monday, Tuesday, and Wednesday from 9 a.m. to 4:30 p.m.

### **Message Board and Lost and Found**

Messages for conference participants will be placed on a bulletin board near the PHCRS/DUC registration desk. Participants can also inquire about lost and found items at the registration desk.

### **Business Center**

Located in the West Conference Center, open from 7:30 a.m. to 5:30 p.m. Photocopying and faxing services are available at your cost.

### **Conference Proceedings**

The proceedings will be provided on CD-ROM this year. These will be mailed to all who register, without charge, approximately 3 months after the Conference. The proceedings will also be available on the NCHS home page at:

<http://www.cdc.gov/nchswww/nchshome.htm>

# Exhibit Area

---

## Exhibitors as of May 15

---

### NCHS' Main Exhibit

#### Other NCHS Exhibits

- Analytic Programming Services
- National Health Care Survey
- Data Processing and Services
- National Survey of Family Growth
- National Death Index
- Health Promotion Statistics

#### Other CDC/ATSDR Exhibits:

- National Institute for Occupational Safety and Health
- CDC Wonder
- CDC National AIDS Clearinghouse

### Other Exhibits:

- CDC Information Systems Support Services Contract (CISSS)
- Agency for Health Care Policy and Research
- U.S. Census Bureau
- Indian Health Service
- Environmental Systems Research Institute
- Capital PC User Group, Inc.

In addition to our exhibitors, you will note that the poster and video presentations are also located in the exhibit area.

### EXHIBIT HOURS

**Monday, July 28, 1997**

9 a.m. – 4:30 p.m.

**Tuesday, July 29, 1997**

9 a.m. – 4:30 p.m.

**Wednesday, July 30, 1997**

9 a.m. – 4:30 p.m.

# Monday, July 28

---

## Opening Ceremony

### 9 a.m.

Welcome and Introductions  
Edward J. Sondik, Ph.D.  
Director  
National Center for Health Statistics  
Keynote Address

Don E. Detmer, M.D.  
Senior Vice President  
University of Virginia

*Break 10 to 10:30 a.m.*

## First Plenary Session

### 10:30 a.m. to 12 noon

#### Health Information Partnerships— National, State, and Local

Healthy People 2000 seeks to improve the data systems infrastructure to ensure the availability of data for informed decisionmaking at the national, State, and local levels. Health information partnerships are needed to facilitate the development of systems that meet the needs of public health, community assessment, and health care. These partnerships should support the existing health statistics and surveillance systems and encourage the development of needed enhancements to ensure that national, State, and local information needs are met.

### Chairperson:

Dorothy P. Rice, B.A., Sc.D.(Hon.)  
Professor  
Institute for Health and Aging  
University of California at San  
Francisco

### 10:40 a.m.

Katherine K. Wallman, B.A.  
Chief Statistician  
U.S. Office of Management and  
Budget

### 11 a.m.

M. Elizabeth Ward  
Assistant Secretary  
Washington State Department of Health

### 11:20 a.m.

Lloyd F. Novick, M.D., M.P.H.  
Commissioner  
Onondaga County (NY)  
Department of Health

### 11:40 a.m.

TBA

### Session Organizer:

Mary Anne Freedman

## Monday, July 28

---

### **Concurrent Session A**

**1:30 to 3 p.m.**

#### **Using the 1995 National Survey of Family Growth: Why and How**

The public-use tape for the 1995 National Survey of Family Growth (NSFG) is now available. In this session, you will learn what is in the file, what is in the codebook, and how to produce analyses.

#### **Chairperson:**

William D. Mosher, Ph.D.  
Statistician  
Reproductive Statistics Branch  
Division of Vital Statistics  
National Center for Health Statistics

**1:30 p.m.**

#### *NSFG Design, Content, and Published Reports*

William D. Mosher, Ph.D.

**1:50 p.m.**

#### *How the NSFG Data are Organized and How to Get the Data*

Joyce C. Abma, Ph.D.  
Statistician  
Division of Vital Statistics  
National Center for Health Statistics

**2:10 p.m.**

#### *How to Use NSFG Data to Produce Analyses*

Anjani Chandra, Ph.D.  
Statistician  
Division of Vital Statistics  
National Center for Health Statistics

**2:30 p.m.**

Discussion

#### **Session Organizer:**

William D. Mosher, Ph.D.

---

## Concurrent Session B

**1:30 to 3 p.m.**

### **Essential Elements of an Assessment Process in a State Health Department**

This session deals with the human resources and the technical resources needed by State health departments to perform the core public health function of assessment.

#### **Chairperson:**

Kenneth G. Keppel, Ph.D.  
Acting Chief  
Reproductive Statistics Branch  
Division of Vital Statistics  
National Center for Health Statistics

**1:30 p.m.**

*Assessment: Vision and Commitment*  
Catherine Schumacher, M.D., M.S.P.H.  
Chronic Disease Epidemiologist and  
Program Manager  
Section of Epidemiology  
Alaska Division of Public Health

**1:45 p.m.**

*Promoting the Effective Use of Data:  
The Role of Training and Technical  
Expertise*  
Robert Rolfs, M.D.\*  
Director  
Office of Public Health Data  
Utah Department of Health

**2 p.m.**

*Access to and Use of Information for  
Assessment: A Systems Approach*

Robert Rolfs, M.D.\*

**2:15 p.m.**

*Using State Assessment Capacity to  
Support Local Public Health Needs*

Stephen Pickard, M.D.\*  
Medical Epidemiologist  
Office of Chronic Disease and Health  
Promotion  
Kansas Department of Health and  
Environment

**2:30 p.m.**

*Inventory of Public Health Data Bases:  
Where are the Data?*

Carol Friedman, D.O.\*  
Medical Epidemiologist  
Bureau of State  
Health Data and Policy Analysis  
Texas Department of Health

**2:40 p.m.**

*Evaluating Public Health Data  
Systems: How Good are the Data?*

Phyllis V. Blood, M.P.A.  
Coordinator  
State Center for Health Statistics  
Iowa Department of Public Health

#### **Session Organizer:**

Kenneth G. Keppel, Ph.D.

\*Presenter of coauthored paper.

## Monday, July 28

---

### Concurrent Session C

**1:30 to 3 p.m.**

#### **National Health Care Survey**

The National Health Care Survey, which provides information on the use of health care services in the major settings where they are provided, will be described in two components, the National Survey of Ambulatory Surgery and the National Nursing Home Survey will be highlighted.

#### **Chairperson:**

Thomas McLemore  
Deputy Director  
Division of Health Care Statistics  
National Center for Health Statistics

**1:30 p.m.**

*Overview of the National Health Care Survey*

Catharine W. Burt, Ed.D.  
Chief  
Ambulatory Care Statistics Branch  
Division of Health Care Statistics  
National Center for Health Statistics

**2 p.m.**

*The National Nursing Home Survey*

Genevieve Strahan  
Acting Chief  
Long-Term Care Statistics Branch  
Division of Health Care Statistics  
National Center for Health Statistics

**2:30 p.m.**

*The National Survey of Ambulatory Surgery*

Robert Pokras  
Chief  
Hospital Care Statistics Branch  
Division of Health Care Statistics  
National Center for Health Statistics

#### **Session Organizer:**

W. Edward Bacon, Ph.D., M.P.H.



---

## Concurrent Session D

**1:30 to 3 p.m.**

### **Partnerships between Public Health and Managed Care for Improved Information**

Speakers will compare the data collection and evaluation process employed by public and private health agencies and examine data collaborations between public health and managed care organizations.

#### **Chairperson:**

Kathryn L. Coltin, M.P.H.  
Director  
Clinical Measurement Systems and  
External Affairs  
Harvard Pilgrim Health Care

**1:30 p.m.**

*KITS-Kaiser Permanente Immunization Tracking System; an HMO Approach to Improved Community Immunization Rates*

Marlene M. Lugg, Dr.P.H.\*  
Senior Research Associate  
Kaiser Permanente

**2 p.m.**

*Public Health Surveillance Using Automated Managed Care Data Systems*

Michael J. Goodman, Ph.D.\*  
Research Investigator  
Health Partners Research  
Group Health Foundation

**2:30 p.m.**

*Assessing Health Status at the Population Level: Comparing the Approaches of Managed Care Plans, Hospitals, and Public Health Agencies*

Paul K. Halverson, Dr.P.H.\*  
Assistant Professor  
Department of Health Policy and  
Administration  
School of Public Health  
University of North Carolina

#### **Session Organizers:**

Marjorie S. Greenberg, M.A., and  
Jane L. Harman, D.V.M., M.S., Ph.D.

\*Presenter of coauthored paper.

# Monday, July 28

---

## Concurrent Session E

**3:30 to 5 p.m.**

### **1993 National Mortality Followback Survey**

A discussion of the design, implementation, and response characteristics of the 1993 National Mortality Followback Survey.

#### **Chairperson:**

Teresa J. Jennings  
State Registrar and Director  
Center for Health Statistics  
Washington State Department of Health

**3:35 p.m.**

### *Introduction and Survey Background*

James F. Spitler, M.S.  
Project Team Leader  
Mortality Statistics Branch  
Division of Vital Statistics  
National Center for Health Statistics

**3:40 p.m.**

### *Survey Design—Proxy Respondent Component*

David W. Keer, M.A.  
Survey Statistician  
Mortality Statistics Branch  
Division of Vital Statistics  
National Center for Health Statistics

**3:55 p.m.**

### *Survey Design—Medical Examiner/Coroner Component*

Hsiang-Ching Kung, Ph.D.  
Survey Statistician  
Mortality Statistics Branch  
Division of Vital Statistics  
National Center for Health Statistics

**4:10 p.m.**

### *Sampling Error and Using SUDAAN*

Joe Fred Gonzalez, M.S.  
Mathematical Statistician  
Office of Research and Methodology  
National Center for Health Statistics

**4:25 p.m.**

### *Non-Sampling Error*

Chester Scott, B.A.  
Survey Statistician  
Mortality Statistics Branch  
Division of Vital Statistics  
National Center for Health Statistics

#### **Session Organizer:**

James F. Spitler, M.S.

---

## Concurrent Session F

**3:30 to 5 p.m.**

### Community Health Assessment

Including community members is valuable, perhaps necessary, to do successful local health assessment; presenters will discuss their experiences forming contacts and coalitions with local residents, gathering data, setting priorities, and working with the community to act on the results.

#### Chairperson:

Katherine E. Heck  
Fellow, Office of Analysis  
Epidemiology, and Health Promotion  
National Center for Health Statistics

**3:30 p.m.**

*Putting the Community Back in  
Community Health Assessment: A  
Process and Outcome Approach with  
a Review of Some Major Issues*

Ravi K. Sharma, Ph.D.  
Professor, Health Services Administration  
Graduate School of Public Health  
University of Pittsburgh

**3:45 p.m.**

*Healthy Summit 2000: The Recent  
Summit County Ohio Experience in  
Community Health Assessment*

Neil M. Casey, M.S.\*, Director  
Health Data Management Division  
Akron City Health Department

**4 p.m.**

*Developing Community Collaboration  
Through Qualitative Health  
Assessment and Program Evaluation:  
Perspectives from the Seattle Public  
Health Evaluation Center*

Kirsten D. Senturia, Ph.D.\*  
Program Analyst, EPE Unit  
Seattle/King County Department of  
Public Health

**4:15 p.m.**

*Beyond Assessment: Achieving  
Community Health Improvement  
Through Local Partnerships*

Paul K. Halverson, Dr.P.H., M.H.S.A.\*  
Assistant Professor  
Department of Health Policy and  
Administration  
School of Public Health  
University of North Carolina

**4:30 p.m.**

*A CDC/NCHS Recommended and  
Standardized Approach for Health and  
Risk Factor Status Surveys in Local  
Health Jurisdictions*

Bruce M. Brock, Ph.D., M.P.H.\*  
President  
Information Transfer Systems, Inc.

#### Session Organizer:

Katherine E. Heck

\*Presenter of coauthored paper.

## Monday, July 28

---

### Concurrent Session G

**3:30 to 5 p.m.**

#### **Getting Ready for the Next Millennium: Health Promotion and Disease Prevention Objectives for the Year 2010**

Plans for the development of year 2010 objectives will be considered using lessons learned from Healthy People 2000, with special focus on data, minority populations, and the objective setting process.

#### **Chairperson:**

Richard J. Klein, M.P.H.  
Chief  
Data Monitoring and Analysis Branch  
Division of Health Promotion Statistics  
National Center for Health Statistics

**3:30 p.m.**

#### *Healthy People 2010 Data Considerations*

Diane K. Wagener, Ph.D.\*  
Acting Director  
Division of Health Promotion Statistics  
National Center for Health Statistics

**3:50 p.m.**

#### *Minority Cross-Cutting Reviews*

Olivia Carter-Pokras, Ph.D.\*  
Epidemiologist  
Office of Minority Health  
Office of Public Health and Science

**4:10 p.m.**

#### *Healthy People 2010: Building the Prevention Agenda for the Next Decade*

Deborah R. Maiese, M.P.A.  
Senior Prevention Policy Advisor  
Office of Disease Prevention and Health Promotion

**4:30 p.m.**

Discussant:

Richard J. Klein, M.P.H.

#### **Session Organizers:**

Richard J. Klein, M.P.H. and  
Christine M. Plepys, M.S.

\*Presenter of coauthored paper.

---

## **Concurrent Session H**

**3:30 to 5 p.m.**

### **Public/Private Health Information Partnerships**

The realities faced in building partnerships between public and private organizations at the State level to collect, share, use, and disseminate health data/information will be discussed.

#### **Chairperson:**

Leonard Kirschner, M.D., M.P.H.  
Vice President  
Health Care Initiatives  
State Health Care  
Electronic Data Systems

**3:30 p.m.**

#### *The Power of Partnerships*

Debbie McCune Davis  
Project Director  
The Arizona Partnership for Infant  
Immunizations

**3:45 p.m.**

#### *Paradigm Shift for Public-Private Partnerships*

Katherine Ganz, M.D., M.S.H.A.  
Director  
New Mexico Health Policy  
Commission

**4 p.m.**

#### *Including Consumers in the Development and Dissemination of Health Data*

Lisa McGiffert, B.A.  
Senior Policy Analyst  
Southwest Regional Office  
Consumers Union

**4:15 p.m.**

Panel Discussion

#### **Session Organizers:**

W. Edward Bacon, Ph.D., M.P.H. and  
Mark H. Epstein, Sc.D.

# Monday, July 28

---

## Poster Presentations

Posters will be on display throughout the day. Authors will be available to describe their work and answer your questions on Monday from 3 to 4 p.m.

### Poster 1

Informing the Public About Managed Care Practice and Performance

Jay S. Buechner, Ph.D.\*  
Chief  
Office of Health Statistics  
Rhode Island Department of Health

### Poster 2

Community Assessment in Washington State: Overview of Local Efforts

Katryne Lukens Bull, M.P.H.  
Community Assessment Liaison  
Office of the Secretary  
Washington State Department of Health

### Poster 3

Community Health Nursing Assessment

Ann Marie Collins, M.S.N., R.N., C.S.\*  
Clinical Instructor  
College of Nursing  
Wayne State University

### Poster 4

Collaboration of Federal and Private Organizations in the Evaluation of Discrepant Measures of Visual Impairment

Wendy L. Davis, M.S.\*  
Research Psychologist  
Center for Survey Methods Research  
U.S. Bureau of the Census

### Poster 5

State and Local Capacity to Measure Year 2000 Objectives

Thomas P. Doremus, M.S.  
Health Policy Analyst  
Public Health Foundation

### Poster 6

Opportunities of Public/Private Collaborative Research in Prehospital Care

Lynne Fullerton, M.A.\*  
Research Specialist  
Department of Emergency Medicine  
University of New Mexico

---

**Poster 7**

Pennsylvania Healthcare Information  
Resource Sharing Task  
Force (PHIRST) — A Collaborative  
Effort in Healthcare Information  
Sharing and Dissemination

Donald E. Harrop, M.D.\*  
President  
KePRO

**Poster 8**

The Massachusetts Hedis/Low Birth  
Weight Project: Combining Managed  
Care Claims Data with Public  
Databases to Generate Valid Reliable  
Performance Measures

Gail R. Janes, Ph.D., M.S.\*  
Epidemiologist  
Division of Adult and Community  
Health  
National Center for Chronic Disease  
Prevention and Health Promotion  
Centers for Disease Control and  
Prevention

**Poster 9**

Bergen County New Jersey Community  
Health Initiative—Partnerships for  
Community Health

Donna P. Szot, R.N., B.S.N.\*  
Executive Assistant  
Bergen County Department of Health  
Services

\*Presenter of coauthored poster

## Tuesday, July 29

---

### Second Plenary Session

9 to 10 a.m.

#### Information Technology and Informatics

Information technology's impact on our society has been immense during this decade, whether one considers the manner in which industries and government now deliver goods and services or in the expectations of the public in dealing with technology at home, work, or school, or while acquiring goods and services. Information technology has changed what we can do and how we organize to do it, and in the public sector no group will be more affected than those involved in collecting and delivering government's information to the public. The sessions throughout the day are targeted to explore how these technologies can be successfully employed in improving the collection, protection, and dissemination of health information.

#### Chairperson:

Edward J. Sondik, Ph.D.  
Director  
National Center for Health Statistics

9 a.m.

Edward L. Baker, M.D., M.P.H.  
Assistant Surgeon General and  
Director  
Public Health Practice Program Office  
Centers for Disease Control and  
Prevention

9:20 a.m.

William Braithwaite, M.D., Ph.D.  
Senior Advisor  
Health Information Policy  
Office of the Assistant Secretary for  
Planning and Evaluation  
Department of Health and Human  
Services

9:40 a.m.

TBA

#### Session Organizer:

Charles J. Rothwell



---

## Concurrent Session I

**10:30 a.m. to 12 noon**

### **Methodological Approaches to Confidentiality Problems Associated with Contextual Data Files**

This session will present methods for providing researchers with detailed microdata from Federal surveys without compromising confidentiality.

#### **Chairperson:**

Alvan O. Zarate, Ph.D.  
Confidentiality Officer  
Office of Planning, Budget, and  
Legislation  
National Center for Health Statistics

**10:40 a.m.**

*National Health Interview Survey State Data Files: Compromises, Tradeoffs, and Concessions*

John W. Horm\*  
Special Assistant to the Director  
National Center for Health Statistics

**10:55 a.m.**

*Protecting Respondent Confidentiality on Microdata Files: NCES Policies and Practices*

Bob Burton  
Mathematical Statistician  
Statistical Standards and Methodology  
Group  
National Center for Education Statistics

**11:10 a.m.**

*Disclosure Limitation for the 2000 Census of Housing and Population*

Laura V. Zayatz, M.S.  
Mathematical Statistician  
Confidentiality Staff  
U.S. Bureau of the Census

**11:25 a.m.**

*A Synthesis on Disclosure Limitation*

George T. Duncan, Ph.D.  
Professor of Statistics  
Heinz School  
Carnegie Mellon University

**11:40 a.m.**

Discussion

#### **Session Organizer:**

Alvan O. Zarate, Ph.D.

\*Presenter of coauthored paper.

## Tuesday, July 29

---

### Concurrent Session J

10:30 a.m. to 12 noon

#### Technology for PC Access to Large Datasets

Demonstrations of data applications by Federal and State government using the Statistical Export and Tabulation System (SETS), including the new Windows 95 interface. A Beta version of the software built to run under Windows will be demonstrated following the presentation.

#### Chairperson:

Linda L. Bean  
CD-ROM Project Coordinator  
Data Dissemination Branch  
Division of Data Services  
National Center for Health Statistics

10:30 a.m.

#### *CSFII/DHKS 1995 CD-ROM—Survey Access Facilitated by SETS*

John W. Wilson, M.S.\*  
Nutritionist  
Food Surveys Research Group  
Agricultural Research Service  
U.S. Department of Agriculture

11 a.m.

#### *Using SETS to Disseminate Public Health Data in Michigan*

Timothy Reardon  
Program Scientist  
Vector Research, Inc.

11:30 a.m.

Discussion

Linda L. Bean

#### Session Organizer:

Linda L. Bean

\*Presenter of coauthored paper.

---

## **Concurrent Session K**

**10:30 a.m. to 12 noon**

### **Accelerating Production of Vital Statistics: Building the Current Flow System**

This session will focus on the experiences of States and NCHS in efforts to accelerate the production of vital statistics through the use of computerized systems.

#### **Chairperson:**

Daniel J. Friedman, Ph.D.  
Assistant Commissioner  
Bureau of Health Statistics, Research,  
and Evaluation  
Massachusetts Department of Public  
Health

**10:35 a.m.**

### *Birth and Death Registration as Intranet Applications*

Philip Quickenton\*  
Assistant Director  
Bureau of Production Systems  
Management  
New York State Department of Health

**10:50 a.m.**

### *Iowa's Integrated Approach to Vital Statistics Re-engineering and Dynamic Processing*

Jill L. France\*  
Chief  
Bureau of Vital Records  
Iowa Department of Public Health

**11:05 a.m.**

### *Modeling for Re-engineering: A Structured Method of Improving Practices*

Susan Katz, M.P.H.\*  
Public Health Practice Program Office  
Centers for Disease Control and  
Prevention

**11:20 a.m.**

### *The Current Flow System from the Federal Perspective*

David P. Johnson  
Survey Statistician  
Systems Programming and Statistical  
Resources Branch  
Division of Vital Statistics  
National Center for Health Statistics

#### **Session Organizer:**

Nicholas F. Pace

\*Presenter of coauthored paper.

## Tuesday, July 29

---

### Concurrent Session L

**10:30 a.m. to 12 noon**

#### **Survey Integration: Vertical and Horizontal**

A review and discussion of how survey integration has affected the design and conduct of data systems at NCHS and collaborating agencies.

#### **Chairperson:**

Edward L. Hunter, M.A.  
Associate Director  
Office of Planning, Budget, and  
Legislation  
National Center for Health Statistics

**10:30 a.m.**

#### *The Medical Expenditure Panel Survey*

Ross H. Arnett, III  
Director  
Center for Cost and Financing Studies  
Agency for Health Care Policy and  
Research

**10:50 a.m.**

#### *NHANES IV*

Clifford L. Johnson, M.S.P.H.\*  
Deputy Director  
Division of Health Examination  
Statistics  
National Center for Health Statistics

**11:10 a.m.**

#### *The State and Local Area Integrated Telephone Survey*

Marcie L. Cynamon, M.A.\*  
Special Assistant to the Director  
Division of Health Interview Statistics  
National Center for Health Statistics

**11:30 a.m.**

#### *Data Linkage*

Jennifer H. Madans, Ph.D.  
Acting Associate Director for Vital and  
Health Statistics Systems  
National Center for Health Statistics

#### **Session Organizer:**

Jennifer H. Madans, Ph.D.

\*Presenter of coauthored paper.

---

## **Concurrent Session M**

**1:30 to 3 p.m.**

### **Role of the Office of Research and Methodology in NCHS Programs**

Selected basic and applied research activities at NCHS relating to survey design, questionnaire design, statistical technology, and statistical methods will be described.

#### **Chairperson:**

Kenneth W. Harris, M.S.  
Special Assistant for Program  
Coordination and Statistical  
Standards  
Office of Research and Methodology  
National Center for Health Statistics

**1:30 p.m.**

*Survey Design Research at NCHS*

Trena M. Ezzati-Rice, M.A.  
Mathematical Statistician  
Office of Research and Methodology  
National Center for Health Statistics

**1:50 p.m.**

*Questionnaire Design Research at NCHS*

Gordon B. Willis, Ph.D.  
Survey Statistician  
Office of Research and Methodology  
National Center for Health Statistics

**2:10 p.m.**

*Statistical Technology Research at NCHS*

Jimmie D. Givens, M.P.H.  
Acting Chief  
Statistical Technology Staff  
Office of Research and Methodology  
National Center for Health Statistics

**2:30 p.m.**

*Statistical Methods Research at NCHS*

Lester R. Curtin, Ph.D.  
Acting Associate Director  
Office of Research and Methodology  
National Center for Health Statistics

#### **Session Organizer:**

Kenneth W. Harris, M.S.

## Tuesday, July 29

---

### Concurrent Session N

**1:30 to 3 p.m.**

#### **Modeling Data for Small Areas**

Estimates for States and local areas that utilize “borrowed strength” statistical models are presented.

#### **Chairperson:**

P. Douglas Williams  
Chief  
Program Development Staff  
Office of Data Standards, Program  
Development, and Extramural  
Programs  
National Center for Health Statistics

**1:30 p.m.**

#### *Model Based Estimates of Small Area Prevalence Rates Using NHANES III*

William Davis, Ph.D.\*  
Senior Statistician  
Klemm Analysis Group, Inc.

**1:55 p.m.**

#### *Modeling County Estimates of Infants and Children Income Eligible for the New York State WIC Program, 1996*

Victoria Lazariu, M.Sc.\*, Ph.D.  
Student Intern  
Division of Nutrition  
New York State Department of Health

**2:20 p.m.**

#### *State Level Estimates Based on the National Household Survey on Drug Abuse*

Joseph C. Gfroerer\*  
Supervisory Mathematical Statistician  
Office of Applied Studies  
Substance Abuse and Mental Health  
Services Administration

#### **Session Organizer:**

Donald J. Malec, Ph.D.

\*Presenter of coauthored paper.

---

## **Concurrent Session O**

**1:30 to 3 p.m.**

### **Use of the Internet for Information Dissemination**

Speakers from State, academic, and private sectors will demonstrate their Web sites, focusing on audience, message, and customer need and satisfaction.

#### **Chairperson:**

Margot A. Palmer, M.G.A.  
Deputy Director  
Division of Data Services  
National Center for Health Statistics

**1:35 p.m.**

*Using the Internet and Electronic Conferences for Disseminating Provisional and Preliminary Vital Statistics Data*

Edward J. Johnson, II, M.S.\*  
State Registrar  
Center for Health Statistics  
Oregon Health Division

**2 p.m.**

*Using the Internet for Targeted Applied Health Research Collaboration: Experience with the CODES Peer-to-Peer Web Site*

Harold B. Weiss, M.S., M.P.H.  
Epidemiologist  
Center for Injury Research and Control  
Department of Emergency Medicine  
University of Pittsburgh

**2:25 p.m.**

*Internet Registry of State-Level Efforts to Integrate Health Information Systems*

Daniel Mendelson, M.P.P.\*  
Vice President  
The Lewin Group

#### **Session Organizer:**

Margot A. Palmer

\*Presenter of coauthored paper.

## Tuesday, July 29

---

### Concurrent Session P

1:30 to 3 p.m.

#### **Ethical Issues: Incorporating Genetics into Public Health Data**

Discussion will focus on some of the legal and ethical considerations necessary to obtain informed consent to use patients' medical record information and stored tissue samples to conduct epidemiological research.

#### **Chairperson:**

Gail F. Fisher, Ph.D.  
Associate Director  
Office of Data Standards, Program  
Development, and Extramural  
Programs  
National Center for Health Statistics

1:30 p.m.

#### *Legal and Ethical Considerations in Securing Consent to Epidemiologic Research in the United States*

Marjorie M. Shultz, J.D.  
Professor of Law  
Boalt Hall School of Law  
University of California at Berkeley

1:50 p.m.

#### *Individual Privacy and the Use of Archival Patient Materials and Data in Research*

David Korn, M.D.  
Distinguished Scholar in Residence  
Division of Biomedical Research  
Association of American Medical  
Colleges

2:10 p.m.

#### *Who Provides and Who Denies Authorization for Medical Record Review for Medical Research*

Barbara P. Yawn, M.D., M.Sc.\*  
Director  
Department of Research and Education  
Olmsted Medical Center

2:30 p.m.

Discussant:

Patrick F. Sullivan, Ph.D.  
Executive Director  
Computer Ethics Institute

#### **Session Organizer:**

Lynnette S. Araki, M.P.H.

\*Presenter of coauthored paper.



---

## Concurrent Session Q

**3:30 to 5 p.m.**

### **Geographic Information Systems (GIS): An Exploratory Tool for Disease Surveillance and Analysis**

Innovative uses of GIS to build a survey sampling frame of local health jurisdictions, explore community epidemiology of teenage births, and investigate breast cancer screening measures, and environmental correlates of association are presented.

#### **Chairperson:**

Charles M. Croner, Ph.D.  
Statistical Geographer  
Office of Research and Methodology  
National Center for Health Statistics

**3:35 p.m.**

*Pilot Project to Develop a Geographic Information Systems-Based Sampling Frame for National Surveys of Local Health Departments and Local Boards of Health*

Thomas B. Richards, M.D.\*  
Medical Officer  
Public Health Practice Program Office  
Centers for Disease Control and Prevention

**3:55 p.m.**

*A Geographic Information Systems (GIS) Approach to Community Epidemiology in a North Carolina Industrial County*

Gerald F. Pyle, Ph.D.\*  
Professor of Health Promotion  
College of Nursing and Health Professions  
University of North Carolina at Charlotte

**4:15 p.m.**

*GIS and Breast Cancer Screening: Integrating Cancer Registry, Census, and Mammography Site Data to Monitor Breast Cancer Control*

T. Joseph Sheehan, Ph.D.\*  
Professor  
Department of Community Medicine and Health Care  
University of Connecticut School of Medicine

**4:35 p.m.**

*Investigating Breast Cancer and the Environment Using a Geographic Information System*

Steven J. Melly, M.S.\*  
Staff Scientist  
Silent Spring Institute

#### **Session Organizer:**

Charles M. Croner, Ph.D.

\*Presenter of coauthored paper.

## Tuesday, July 29

---

### Concurrent Session R

3:30 to 5 p.m.

**Opportunities for Data Linkage:  
Technology Solutions for  
Confidentiality Issues in the Use of  
Survey and Administrative Data**

The linkage of survey data with administrative data provides exciting new potentials for data users but also presents new potentials for compromising confidentiality. The speakers in this session employ new technology to enhance access and protect confidentiality.

**Chairperson:**

John W. Horm  
Special Assistant to the Director  
Office of the Center Director  
National Center for Health Statistics

3:30 p.m.

*Developing Guidelines for Release of  
Aggregate Data: A State Health  
Department Perspective*

Bruce B. Cohen, Ph.D.\*  
Director  
Division of Research and  
Epidemiology  
Bureau of Health Statistics, Research,  
and Evaluation  
Massachusetts Department of Public  
Health

3:50 p.m.

*Access to Contextual Data from the  
NSFG*

Linda J. Piccinino, M.P.S.\*  
Statistician  
Reproductive Statistics Branch  
Division of Vital Statistics  
National Center for Health Statistics

4:10 p.m.

*Technical Possibilities for Remote  
Analysis of Confidential Data*

Cavin P. Capps\*  
Chief  
Survey Modernization Programming  
Branch  
Demographic Surveys Division  
U.S. Bureau of the Census

4:30 p.m.

Discussant:

Sally Keller-McNulty, Ph.D.  
Professor  
Department of Statistics  
Kansas State University

**Session Organizer:**

John W. Horm

\*Presenter of coauthored paper.

---

## **Concurrent Session S**

**3:30 to 5 p.m.**

### **Data Standards and Integrated Data Systems**

Development of core data sets, integrated data systems, and uniform assessment standards will be highlighted in this session.

#### **Chairperson:**

Judith Miller Jones  
Director  
National Health Policy Forum

**3:30 p.m.**

### *Patient Core Data Set: Standard for a Longitudinal Health/Medical Record*

Jane C. Swart, Ph.D., R.N., F.A.A.N.\*  
Dean and Professor  
College of Nursing and Health  
Wright State University

**4 p.m.**

### *Phase I of the California Interagency Data Collaboration: Development of Uniform Standards for Interagency Data Sharing, Case Management Information Systems, and Data Confidentiality*

Norm Constantine, Ph.D.\*  
Director  
School and Community Health  
Research  
WestEd Regional Education Laboratory

**4:30 p.m.**

### *Prospective Health Risk Assessment with a Computer-Assisted Telephone Interview*

Inge M. Okkes, M.A., Ph.D.\*  
Research Coordinator  
Transition Project  
Department of Family Medicine  
Academic Medical Centre  
University of Amsterdam

#### **Session Organizer:**

Marjorie S. Greenberg, M.A.

\*Presenter of coauthored paper.

## Tuesday, July 29

---

### Concurrent Session T

**3:30 to 5 p.m.**

#### **The Interactive Internet: Moving Beyond Fixed Products**

The initial use of the Internet by public health agencies is to make existing information more accessible to their customers by providing electronic access to existing publications and reports. This session will emphasize dynamic interactive tools for Internet and Intranet services such as advanced text and data retrieval systems, GIS and analytic systems that will allow users to customize their information requests.

#### **Chairperson:**

Charles J. Rothwell  
Associate Director  
Office of Data Processing and Services  
National Center for Health Statistics

**3:35 p.m.**

*MASSCHIP: A Flexible, User Friendly, Internet-Based Information Service for Use by the Public, Communities, and Public Health Providers in Massachusetts*

Daniel J. Friedman, Ph.D.\*  
Assistant Commissioner  
Bureau of Health Statistics, Research,  
and Evaluation  
Massachusetts Department of Public  
Health

**3:55 p.m.**

*Dynamics of Georgia Public Health on the Web*

Sharon McKenna, M.H.A.  
Project Manager  
Center for Health Information  
Georgia Division of Public Health

**4:15 p.m.**

*Use of the Internet for Information Dissemination*

James C. Reading, Ph.D.\*  
Professor  
University of Utah School of Medicine

**4:35 p.m.**

Discussion

#### **Session Organizer:**

Charles J. Rothwell

\*Presenter of coauthored paper.

---

## Poster Presentations

Posters will be on display throughout the day. Authors will be available to describe their work and answer your questions on Tuesday from 11 a.m. to 12 noon and from 3 to 4 p.m.

### Poster 1

Use of NCHS Data in Worldwide  
Epidemiology at Glaxo Welcome, Inc.

Suzanne F. Cook, Ph.D.\*  
Principal Epidemiologist  
Worldwide Epidemiology Department  
Glaxo Welcome, Inc.

### Poster 2

Evaluating Geographic Units for  
Spatio-Temporal Analysis of  
Cardiovascular Disease in Appalachia  
Using a Geographic Information  
System

Gregory A. Elmes, Ph.D.\*  
Professor of Geography  
Department of Geology and  
Geography  
West Virginia GIS Technical Center

### Poster 3

Methods for Estimating the Number of  
Income Eligible WIC Program  
Participants at the State Level in  
Postcensal Years

Ralph L. Franklin, B.A.\*  
Policy Analyst and Information  
Systems Manager  
Sigma One Corporation

### Poster 4

Advanced Communications  
Technology for Biomedical Data  
Dissemination via Client/Server  
Architectures Using Asynchronous  
Transfer Mode (Note: Presentation will  
be given in exhibit booth)

Michael J. Gill, B.S.E.E.\*  
Electronics Engineer  
Communications Engineering Branch  
National Library of Medicine

### Poster 5

The High Risk Populations Findings  
Bank: A Key to Identifying Effective  
Substance Abuse Prevention Programs

Anna B. Hamilton, M.S.\*  
Project Director  
The CDM Group, Inc.

## Tuesday, July 29

---

### Poster 6

The Use of Geographic Information Systems To Determine Access to Nonprofit, Community-Based Environmental Health Information for Minority Populations

William D. Henriques, Ph.D.,  
M.S.P.H.\*  
Environmental Toxicologist  
Division of Health Assessment and Consultation  
Agency for Toxic Substances and Disease Registry  
Centers for Disease Control and Prevention

### Poster 7

Methodological Issues in Small Area Analysis of Public Health Data: Applying Theory to Practice  
Russell S. Kirby, Ph.D., M.S., F.A.C.E.  
Associate Professor and Coordinator of Research  
Department of Obstetrics and Gynecology  
Milwaukee Clinical Campus  
University of Wisconsin Medical School

### Poster 8

Building a State Health Data Base Inventory on the Internet  
William D. Spears, Ph.D.\*  
Director  
Community Health Information System  
University of Texas School of Public Health

### Poster 9

Will Your Public Health and Surveillance Systems be Ready for Year 2000?

Daphne Bien Walters, M.S.\*  
Chief  
Information Resources Branch  
Information Resources Management Office  
Agency for Toxic Substances and Disease Registry  
Centers for Disease Control and Prevention

### Poster 10

Computerized Recording of Occupations Made Easy (CROME) and Cancer

Jason Tung, M.Eng., B.Sc.  
Occupational Hygienist  
Occupational Disease Panel

\*Presenter of coauthored poster.

## Wednesday, July 30

---

### **Third Plenary Session**

**9 to 10 a.m.**

#### **Communities at Risk**

Although change in health care delivery and financing is generally expected to reduce costs and improve service in the long run, it is also widely recognized that some population subgroups are at risk of reduced access, especially during the transition period. Generally these communities are those who already have problems of accessing health care or whose health care is now very expensive. During this day of the Conference, special attention is focused on these communities at risk with respect to health status, access to health care, special health data needs, and other aspects of the changing health care system.

#### **Chairperson:**

Gerry E. Hendershot, Ph.D.  
Assistant for Data Analysis and  
Dissemination  
Division of Health Interview Statistics  
National Center for Health Statistics

**9:05 a.m.**

Thomas A. LaVeist, Ph.D.  
Associate Professor of Health and  
Public Policy  
Department of Health Policy and  
Management  
School of Hygiene and Public Health  
Johns Hopkins University

**9:30 a.m.**

TBA

#### **Session Organizers:**

Gerry E. Hendershot, Ph.D. and  
P. Ellen Parsons, Ph.D., M.P.H.

## Wednesday, July 30

---

### Concurrent Session U

**10:30 a.m. to 12 noon**

#### **New Features of the National Health Interview Survey (NHIS)**

The NHIS has recently undergone a redesign of the sample, the content, and the mode of administration; an overview of these changes and initial data from the new survey will be presented.

#### **Chairperson:**

James M. Lepkowski, Ph.D.  
Associate Research Scientist  
Institute for Survey Research  
University of Michigan

**10:35 a.m.**

*An Overview of the NHIS Redesign*

Jennifer H. Madans, Ph.D.  
Acting Associate Director for Vital and  
Health Statistics Systems  
National Center for Health Statistics

**10:50 a.m.**

*Structure and Content of the New NHIS*

Ann M. Hardy, Dr.P.H.  
Acting Director  
Division of Health Interview Statistics  
National Center for Health Statistics

**11:05 a.m.**

*Health Measures from the New NHIS*

Kathryn A. Silbersiepe, M.D., M.S.  
Acting Chief  
Illness and Disability Statistics Branch  
Division of Health Interview Statistics  
National Center for Health Statistics

**11:20 a.m.**

*Implementation of a Computer Assisted Personal Interview (CAPI) System for the NHIS*

Anne K. Stratton, M.S.  
Health Statistician  
Division of Health Interview Statistics  
National Center for Health Statistics

**11:35 a.m.**

Discussion

#### **Session Organizer:**

Ann M. Hardy, Dr.P.H.



---

## **Concurrent Session V**

**10:30 a.m. to 12 noon**

### **African American Health**

Adequate and appropriate health care remains an elusive goal for many African Americans in the United States, and this session will examine how various social and psychological factors impact the health status of African Americans.

#### **Chairperson:**

Jacqueline B. Wilson, B.A., M.P.H.  
Health Statistician  
Division of Health Interview Statistics  
National Center for Health Statistics

**10:30 a.m.**

### *Racial Discrimination and Health Outcomes in African Americans*

Vickie M. Mays, Ph.D.\*  
Professor  
Department of Psychology  
University of California at Los Angeles

**10:50 a.m.**

### *Discrimination, Race, and Health*

David R. Williams, Ph.D., M.P.H.\*  
Associate Professor of Sociology  
Institute for Social Research  
University of Michigan

**11:10 a.m.**

### *Residential Segregation, Poverty, and Mortality*

Chiquita A. Collins, Ph.D.  
Assistant Professor  
Department of Sociology  
College of Liberal Arts and Sciences  
University of Illinois at Chicago

**11:30 a.m.**

Discussion

#### **Session Organizer:**

Jacqueline B. Wilson

\*Presenter of coauthored paper.

## Wednesday, July 30

---

### Concurrent Session W

**10:30 a.m. to 12 noon**

#### Access to Mental Health Services

Availability, utilization, organizational structure, cost, consumer participation, and insurance parity legislation of mental health services are selectively examined for adolescents being discharged from hospitals, for people disabled by mental disorders, and for elderly persons in managed care.

#### Chairperson:

Cille Kennedy, Ph.D.  
Assistant Director for Disability  
Research  
Division of Epidemiology and Services  
Research  
National Institute of Mental Health

**10:30 a.m.**

*Using Hospital Discharge Data to Assess the Mental Health of California's Adolescents*

Anand Chabra, M.D., M.P.H.\*  
Medical Epidemiologist  
Maternal and Child Health Branch  
California Department of Health  
Services

**10:50 a.m.**

*Mental Health, Managed Care, and the Elderly*

Carroll L. Estes, Ph.D.\*  
Director  
Institute for Health and Aging  
University of California at San  
Francisco

**11:10 a.m.**

*Insurance Parity Legislation for Mental Health and Managed Behavioral Health Care: The Combined Impact on Access to Care for Persons with Mental Disabilities*

Agnes Rupp, Ph.D.  
Chief  
Mental Health Economics Research  
Program  
Division of Epidemiology and Services  
Research  
National Institute of Mental Health

**11:30 a.m.**

Discussant:

Jean Campbell, Ph.D.  
Research Assistant Professor  
Missouri Institute of Mental Health  
University of Missouri School of  
Medicine

#### Session Organizer:

Cille Kennedy

\*Presenter of coauthored paper.

---

## Concurrent Session X

**10:30 a.m. to 12 noon**

### **HIV/AIDS Data Needs and Uses for Prevention and Health Care**

The collection and use of local area HIV data and innovative HIV community planning activities will be presented and discussed.

#### **Chairperson:**

Ronald W. Wilson, M.A.  
NCHS AIDS Liaison  
National Center for Health Statistics

**10:30 a.m.**

*Doing More with Less: Uses of HIV Counseling and Testing Clinic Record Data*

Helene Cross, M.A.\*  
Research Scientist I  
Division of AIDS Prevention and Control  
New Jersey Department of Health and Senior Services

**10:50 a.m.**

*Use of a Telephone Interview Survey to Assess HIV-Related Behaviors and Identify High Risk Individuals Among African American and Hispanic Los Angeles County Residents*

Susan D. Cochran, Ph.D., M.S.\*  
Professor  
Department of Epidemiology  
School of Public Health  
University of California at Los Angeles

**11:10 a.m.**

*HIV Prevention: Applying "Stages of Change" Theory to Harness, Assess and Accelerate Bottom-up and Top-down Prevention Knowledge Production and Technology Transfer*

Debbie S. Indyk, Ph.D., M.S.\*  
Director  
Education and Prevention, AIDS Center  
Mount Sinai Medical Center

**11:30 a.m.**

*Meeting Data Needs of the New York State HIV Prevention Planning Group (PPG): Unexpected Benefits*

P. Clay Stephens, P.A., M.Phil.\*  
Research Scientist  
Division of Epidemiology  
Bureau of HIV/AIDS Epidemiology  
New York State Department of Health

#### **Session Organizer:**

Ronald W. Wilson, M.A.

\*Presenter of coauthored paper.

## Wednesday, July 30

---

### Concurrent Session Y

**1:30 to 3 p.m.**

#### **New Disability Data from the National Health Interview Survey**

Staff from the National Health Interview Survey will give an update on data releases and preliminary analyses of the National Health Interview Survey on Disability, and users will describe their experience analyzing this new and unusual data set.

#### **Chairperson:**

Lisa I. Iezzoni, M.D., M.Sc.  
Associate Professor  
Beth Israel Deaconess Medical Center  
Harvard Medical School

**1:40 p.m.**

*Users, User Support Services, and Frequently Asked Questions About the National Health Interview Survey on Disability*

Senda Benaissa, M.P.H.\*  
Fellow  
Division of Health Interview Statistics  
National Center for Health Statistics

**1:55 p.m.**

*Injury-related Disability Among Adolescents and Young Adults*

Shanthi N. Ameratunga, M.D., M.P.H.\*  
Post-doctoral Fellow  
Center for Adolescent Health Promotion and Disease Prevention  
Johns Hopkins School of Hygiene and Public Health

**2:10 p.m.**

*Children and Working-age Adults with Mobility in North Carolina*

Karin Behe, M.A.\*  
Social Research Associate  
Frank Porter Graham Child Development Center  
University of North Carolina at Chapel Hill

**2:25 p.m.**

Discussant:

Michele Adler, M.P.H.  
Disability Policy Analyst  
Office of Disability, Aging, and Long Term Care Policy  
Office of the Assistant Secretary for Planning and Evaluation

#### **Session Organizer:**

Gerry E. Hendershot, Ph.D.

\*Presenter of coauthored paper.

---

## Concurrent Session Z

**1:30 to 3 p.m.**

### **Implications of Managed Care for Hispanic Health**

This session will cover Hispanic health insurance coverage and participation in managed care; disparities in health care access and quality within similarly insured populations; and barriers that Hispanics may encounter when accessing quality health care.

#### **Chairperson:**

Olivia Carter-Pokras, Ph.D.  
Epidemiologist  
Office of Minority Health  
Department of Health and Human Services

**1:40 p.m.**

### *Health Insurance Coverage for Hispanics—Is it Worsening?*

Robert Valdez, Ph.D.  
Professor  
Health Policy and Management  
School of Public Health  
University of California at Los Angeles

**2 p.m.**

### *Ensuring Successful Access to Medicaid Managed Care for Medically Underserved, Latino Populations in New York City*

Maria delCarmen Collado\*  
Vice President of Marketing and Member Services  
Center Care

**2:20 p.m.**

### *Arizona Women's Health Survey*

Cheri I. Levenson, M.P.A.  
Program Evaluation Consultant  
Office of Women's and Children's Health  
Arizona Department of Health Services

**2:40 p.m.**

### *Lessons Learned in Medicaid Populations from Arizona*

Diane Greeneich, D.N.Sc.  
Consultant  
Health Care Systems Management, Inc.

#### **Session Organizer:**

Olivia Carter-Pokras, Ph.D.

\*Presenter of coauthored paper.

## Wednesday, July 30

---

### Concurrent Session AA

**1:30 to 3 p.m.**

#### **Race, Ethnicity, and Socioeconomic Status: A Research Perspective**

The impact of race, ethnicity, and socioeconomic status upon the health of minority populations and how these data are reported in the scientific literature will be examined.

#### **Chairperson:**

Audrey L. Burwell, M.S.  
Grants Coordinator, Office of Data Standards, Program Development, and Extramural Programs  
National Center for Health Statistics

**1:35 p.m.**

#### *Editors' Opinions and Policies on Research in Race, Ethnicity, and Health*

Trude Bennett, Dr.P.H.\*  
Assistant Professor, Department of Maternal and Child Health  
School of Public Health  
University of North Carolina at Chapel Hill

**1:50 p.m.**

#### *Childhood Poverty and Adult Health*

Thomas A. LaVeist, Ph.D.\*  
Associate Professor of Health and Public Policy, Department of Health Policy and Management  
School of Hygiene and Public Health  
Johns Hopkins University

**2:05 p.m.**

#### *Race, Socioeconomic Group, and Weathering*

Arline T. Geronimus, Sc.D.\*  
Associate Professor  
Department of Health Behavior and Health Education  
University of Michigan School of Public Health

**2:20 p.m.**

#### *Ethnicity, Mortality, and Self-Perceived Health in the Pooled 1986–1990 NHIS Cohorts*

Daniel L. McGee, Ph.D.\*  
Professor and Head, Biostatistics Section  
Department of Preventive Medicine and Epidemiology  
Loyola University Medical Center

**2:35 p.m.**

#### *Race/Ethnicity, Social Class, and Incidence of Cancer*

Nancy Krieger, Ph.D.\*  
Assistant Professor  
Department of Health and Social Behavior  
Harvard School of Public Health

#### **Session Organizer:**

Audrey L. Burwell, M.S.

\*Presenter of coauthored paper.

---

## **Concurrent Session BB**

**1:30 to 3 p.m.**

### **Women's Health**

Several papers will be presented and discussed regarding differences in the health of women and men, during which details of the potential sex (biological) and gender (psychosocial) sources, as well as policy implications, of these differences will be highlighted.

#### **Chairperson:**

Kate M. Brett, Ph.D.  
Epidemiologist  
Division of Epidemiology  
National Center for Health Statistics

**1:35 p.m.**

*Beyond Disaggregation: Gender as a Health Determinant*

Brian Pearl, M.A.  
Policy Analyst  
Policy and Consultation Branch  
Women's Health Bureau  
Health Canada

**1:55 p.m.**

*Gender Difference in Ambulatory Care Sensitive Conditions*

David S. Rubin, M.P.A.  
Program Research Specialist III  
Division of Planning, Policy, and  
Resource Development  
New York Department of Health

**2:15 p.m.**

*Gender Differences in the Decision to Operate for Abdominal Aortic Aneurysm Repair, Canada, 1983-1994*

Greg F. Parsons, B.Sc.\*  
Health Research Analyst  
Health Statistics Division  
Statistics Canada

**2:35 p.m.**

*Musculoskeletal Health and Function in Women*

Lois M. Verbrugge, Ph.D., M.P.H.\*  
Senior Scientist  
Westat, Inc.  
Distinguished Research Scientist  
Institute of Gerontology  
University of Michigan

#### **Session Organizer:**

Kate M. Brett, Ph.D.

\*Presenter of coauthored paper.

## Wednesday, July 30

---

### Concurrent Session CC

**3:30 to 5 p.m.**

#### **National Health and Nutrition Examination Survey—What's Available from NHANES III and Plans for NHANES IV**

An overview of the content, structure, and availability of public use files and other products from NHANES III; and a description of the survey design, topical content, and field schedule for NHANES IV.

#### **Chairperson:**

Clifford L. Johnson, M.S.P.H.  
Deputy Director  
Division of Health Examination  
Statistics  
National Center for Health Statistics

**3:30 p.m.**

#### *Overview of Data Analysis Issues*

Kurt R. Maurer, Ph.D.<sup>†</sup>  
Chief  
Analysis Branch

**3:40 p.m.**

#### *Issues related to the Use of the Questionnaires*

Debra J. Brody<sup>†</sup>  
Health Statistician

**3:50 p.m.**

#### *Issues Related to the Use of the Exam Data*

Jean S. Findlay<sup>†</sup>  
Chief, Survey Operations Branch

**4 p.m.**

#### *Issues Related to the Use of the Lab Data*

Geraldine M. McQuillan, Ph.D.<sup>†</sup>  
Senior Infectious Disease  
Epidemiologist

**4:10 p.m.**

#### *Issues Related to the Use of the Dietary Data*

Margaret A. McDowell<sup>†</sup>  
Health Statistician

**4:20 p.m.**

#### *Preliminary Plans for the NHANES IV*

Natalie E. Dupree<sup>†</sup>  
Health Statistician

**4:30 p.m.**

Audience Questions

#### **Session Organizer:**

Clifford L. Johnson, M.S.P.H.

<sup>†</sup>Division of Health Examination  
Statistics  
National Center for Health Statistics



---

## **Concurrent Session DD**

**3:30 to 5 p.m.**

### **Asian American Health: Data Findings and Data Needs**

Recent data and progress made in Asian American health data systems will be discussed.

#### **Chairperson:**

Stella M. Yu, Sc.D., M.P.H.  
Statistician  
Maternal and Child Health Bureau  
Health Resources and Services  
Administration

**3:35 p.m.**

*Using Vital Record Data to Explore Perinatal Health Issues of Asian Americans*

Greg R. Alexander, Sc.D., M.P.H.\*  
Professor  
Department of Maternal and Child  
Health  
School of Public Health  
University of Alabama at Birmingham

**4 p.m.**

*Liver Cancer Incidence and Mortality Rates Increasing Asian/Other Women in California, 1988-1993*

Sandy L. Kwong, M.P.H.\*  
Senior Research Associate  
California Cancer Registry  
Department of Health Services

**4:20 p.m.**

*Health Care Service Utilization Model of Asian Americans*

Chang Gi Park, Ph.D.\*  
Research Specialist  
Women's Health Exchange  
Department of Public Health, Mental  
Health, and Administrative Nursing  
University of Illinois College of  
Nursing

**4:40 p.m.**

Discussion

#### **Session Organizer:**

Stella M. Yu, Sc.D., M.P.H.

\*Presenter of coauthored paper.

## Wednesday, July 30

---

### Concurrent Session EE

**3:30 to 5 p.m.**

#### Physical Disability

New data on impairments and barriers to social participation are the focus of the physical disability session.

#### Chairperson:

Katherine D. Seelman, Ph.D.  
Director  
National Institute on Disability and  
Rehabilitation Research

**3:40 p.m.**

*Research Archive on Disability in the U.S. (Radius): Using ICDH Codes to Facilitate Data Analysis*

Eric L. Lang, Ph.D.  
Director  
Research Support Group  
Sociometrics Corporation

**3:55 p.m.**

*Classifying the Consequences of Disabilities: Using National Health Interview Survey Disability Supplement Data in Conjunction with the Proposed ICDH Revision*

Donald J. Lollar, Ed.D.\*  
Visiting Scientist  
Disabilities Prevention Program  
National Center for Environmental Health  
Centers for Disease Control and  
Prevention

**4:10 p.m.**

*Physical Disabilities in the United States and Canada*

William F. Forbes, Ph.D., D.Sc.  
Research Associate  
Clinical Epidemiology Unit  
Elizabeth Bruyere Hospital

**4:25 p.m.**

*The Relationship Between Limitation of Activity and Mortality Among Community-Living Elderly: Application of the NHIS-NDI Linked Data File*

Kristine A. Mulhorn, M.H.S.A., Ph.D.  
Faculty Member  
Health Care Department  
University of Michigan at Flint

**4:40 p.m.**

Discussant:

Speed Davis  
Executive Assistant to the Chairperson  
National Council on Disability

#### Session Organizer:

Paul J. Placek, Ph.D.

\*Presenter of coauthored paper.

---

## Concurrent Session FF

**3:30 to 5 p.m.**

### Health in the Context of Communities

The quality of communities and the character of health care systems are part of processes defining and determining health.

#### Chairperson:

Wilbur C. Hadden, M.A.  
Statistician  
Office of Data Standards,  
Program Development, and Extramural  
Programs  
National Center for Health Statistics

**3:30 p.m.**

*Geographic Variation in the  
Administrative Prevalence of Mild  
Mental Retardation*

Clancy Blair, Ph.D., M.P.H.\*  
NIH Postdoctoral Fellow  
Department of Psychology  
University of Miami

**3:45 p.m.**

*The Index of Effective Prenatal Health  
Care Delivery*

Thomas E. Lengyel, Ph.D.  
Director of Research  
Family Service America

**4 p.m.**

*The Growth of Ambulatory Surgery:  
Variation by Community and Hospital  
Characteristics*

Claudia Steiner, M.D., M.P.H.\*  
Research Physician  
Center for Delivery System Research  
Agency for Health Care Policy and  
Research

**4:15 p.m.**

*The Human Ecological Mesoscale and  
its Importance to Public Health: Urban  
Neighborhood to Metro Region*

Rodrick Wallace, Ph.D.\*  
Research Scientist  
Department of Mental Health  
Epidemiology Research  
New York State Psychiatric Institute

**4:30 p.m.**

Discussion

#### Session Organizer:

Wilbur C. Hadden, M.A.

\*Presenter of coauthored paper.

## Wednesday, July 30

---

### Poster Presentations

Posters will be on display throughout the day. Authors will be available to describe their work and answer your questions on Wednesday from 11 a.m. to 12 noon and from 3 to 4 p.m.

#### Poster 1

Health Services Restructuring in  
Central West Ontario: Monitoring the  
Impact on Population Health

Thomas J. Abernathy, Ph.D.\*  
Director  
Central West Health Planning  
Information Network

#### Poster 2

Healthcare Utilization by Prelingually  
and Postlingually Deafened Adults: A  
New Look at the 1990–1991 National  
Health Interview Survey Data

Steven Barnett, M.D.\*  
Clinical Senior Instructor  
Department of Family Medicine  
University of Rochester

#### Poster 3

Community Health Profiling by  
Lifestyle Cluster: A Marketing  
Approach

Wilma Barshaw, M.S., M.P.H.\*  
Statistical Analyst  
Center for Health Information  
Division of Public Health  
Georgia Department of Human  
Resources

#### Poster 4

Gender, Ethnic, and Socioeconomic  
Differences in Lifetime Risk of  
Intra-abdominal Surgery—Use and  
Interpretation of Autopsy Data

Linda S. Chan, Ph.D.\*  
Professor  
School of Medicine  
University of Southern California

---

**Poster 5**

Core Indicators Assessing the Quality of Care for Native American In-Center Hemodialysis Patients in the U.S.: Results From the 1996 End Stage Renal Disease Core Indicators Project

Diane L. Frankenfield, B.S.Pharm.,  
Dr.P.H.  
Epidemiologist  
Center for Clinical  
Measurement and Improvement  
Health Care Financing Administration

**Poster 6**

The Use of Assistive Devices by the Disabled Population in Canada

Greg F. Parsons, B.Sc.  
Health Research Analyst  
Health Statistics Division  
Statistics Canada

**Poster 7**

Cultural Factors and Health Services for American Indians and Alaska Natives: An Epidemiologic Perspective

Dorothy A. Rhoades, M.D.\*  
Senior Fellow Indian Health  
Native American Center of Excellence  
University of Washington School of  
Medicine

**Poster 8**

Testing New Ways to Ask Race Questions on Birth Certificates

Susan Schechter, M.A.\*  
Survey Statistician  
Office of Research and Methodology  
National Center for Health Statistics

**Poster 9**

Access to Health Services for Poor and Underserved People in France

Mary-Jo Sourty\*  
Senior Researcher  
Health Care System of France  
CREDES

\*Presenter of coauthored poster.

## Thursday, July 31

---

### **Communities at Risk (continued)**

### **Concurrent Session GG**

**9 to 10:30 a.m.**

#### **Survey Data: Analytical Limitations and Practical Solutions—The NHANES III Experience**

The NHANES III data files are complex and present many problems for analysts. This session discusses some of those problems and the solutions found by some researchers using the NHANES III data.

#### **Chairperson:**

Kurt R. Maurer, Ph.D.  
Chief  
Analysis Branch  
Division of Health Examination  
Statistics  
National Center for Health Statistics

**9:05 a.m.**

#### *NHANES III: Design, Estimation, and Analytic Limitations*

Clifford L. Johnson, M.S.P.H.  
Deputy Director  
Division of Health Examination  
Statistics  
National Center for Health Statistics

**9:30 a.m.**

#### *Variance Estimation and Inference for Special Subpopulations in NHANES III*

John L. Eltinge, Ph.D.\*  
Professor  
Department of Statistics  
Texas A&M University

**9:55 a.m.**

#### *Analytic Guidelines for Survey Data: A Practical Approach*

Lester R. Curtin, Ph.D.\*  
Acting Associate Director  
Office of Research and Methodology  
National Center for Health Statistics

**10:20 a.m.**

Discussion

#### **Session Organizer:**

Clifford L. Johnson, M.S.P.H.

\*Presenter of coauthored paper.

---

## Concurrent Session HH

**9 to 10:30 a.m.**

### Native American Health

Issues will be discussed related to Indian health in general and the data challenges due to recent changes in American Indians or Alaskan Natives and Indian Health Programs.

#### Chairperson:

Edward Fox, Ph.D.  
Policy Analyst, Northwest Portland  
Area Indian Health Board

**9:10 a.m.**

*Motor Vehicle Crash Injuries Among  
American Indians in Washington*

Marianne Sullivan, B.A., M.P.H.\*  
Epidemiologist, EPE Unit  
Seattle-King County  
Department of Public Health

**9:20 a.m.**

*Responding to Accountability and  
Reporting Requirements through the  
Use of Baseline Measures*

Martha M. Holliday, M.P.H.\*  
Tribal Service Program Project Director  
Northwest Portland Area Indian Health  
Board

**9:30 a.m.**

*Indian Health Data Bureau*

Dave Baldrige\*  
Executive Director, National Indian  
Council on Aging

**9:40 a.m.**

*National Monitoring of American  
Indian and Alaska Natives Health  
Issues: Status of and Methodological  
Concerns Related to Monitoring  
Healthy People 2000 Objectives*

Fred Seitz, Ph.D.  
Statistician  
Division of Health Promotion Statistics  
National Center for Health Statistics

**9:50 a.m.**

*Heart Disease Risk Factors and  
Prevention Strategies Among  
Chippewa and Menominee  
Indians—The Inter-Tribal Heart*

Michele L. Casper, Ph.D.\*  
Epidemiologist, Division of Adult and  
Community Health  
National Center for Chronic Disease  
Prevention and Health Promotion  
Centers for Disease Control and  
Prevention

**10 a.m.**

Discussant:

Doni Wilder, M.A.  
Executive Director  
Northwest Portland Area Indian Health  
Board

#### Session Organizer:

Hsiang-Ching Kung, Ph.D.

\*Presenter of coauthored paper.

## Thursday, July 31

---

### Concurrent Session II

**9 to 10:30 a.m.**

#### Children and Families

Speakers will discuss the effect of the family on childhood health, development, and disability.

#### Chairperson:

John L. Kiely, Ph.D.  
Chief  
Infant and Child Health Studies Branch  
Office of Analysis, Epidemiology, and  
Health Promotion  
National Center for Health Statistics

**9:05 a.m.**

*Children's Disabilities and Their  
Impact on Families: New Data from  
the 1994 National Health Interview  
Survey Disability Supplement*

John F. Hough, Dr.P.H.\*  
Prevention Effectiveness Fellow  
Disabilities Prevention Program  
National Center for Environmental  
Health  
Centers for Disease Control and  
Prevention

**9:25 a.m.**

*Disability, Family Environment, and  
Program Participation: Factors  
Influencing the Well-Being of Children*

Robert C. Ficke, M.A.\*  
Senior Study Director  
Westat, Inc.

Scott C. Brown, Ph.D.  
Associate Division Director  
Early Childhood Team  
Office of Special Education Programs  
U.S. Department of Education

**9:45 a.m.**

*Community-Based Organizations as  
Strategic Sites for Developing  
Programs, Data, and Models to  
Understand and Serve the Needs of  
Inner City Families*

Leonard Indyk, Ph.D.\*  
President  
BRADLI Associates

**10:05 a.m.**

Discussant:

Edward L. Schor, M.D.  
Medical Director, Division of Family  
and Community Health  
Iowa Department of Public Health

#### Session Organizer:

John L. Kiely, Ph.D.

\*Presenter of coauthored paper.



---

## **Concurrent Session JJ**

**9 to 10:30 a.m.**

### **The Challenges of Managed Care for Older Persons**

Delivering managed care to the elderly raises challenges about the needs of those with chronic conditions and Alzheimer's Disease, access to and quality of care, and information for assessment.

#### **Chairperson:**

Joan F. Van Nostrand, D.P.A.  
Project Director  
International Collaborative Effort on Aging  
Office of Data Standards, Program Development, and Extramural Programs  
National Center for Health Statistics

**9:05 a.m.**

#### *Managed Care and the Elderly: Opportunities and Problems*

Robert L. Kane, M.D.  
Endowed Chair in Long Term Care and Aging  
University of Minnesota School of Public Health

**9:25 a.m.**

#### *Access in Medicare Managed Care*

Marsha R. Gold, Sc.D.  
Senior Fellow  
Mathematica Policy Research, Inc.

**9:45 a.m.**

#### *Challenges of Alzheimer's Disease for Managed Care*

Katie Maslow, M.S.W.  
Director  
Initiative on Alzheimer's Disease and Managed Care  
National Alzheimer's Association

**10 a.m.**

#### *End-of-Life Care in Managed Care*

Deborah E. Sellers, Ph.D.  
Project Director  
Education Development Center

**10:15 a.m.**

#### *Information Needs*

William J. Scanlon, Ph.D.  
Director  
Health Financing and Systems Issues  
U.S. General Accounting Office

#### **Session Organizer:**

Joan F. Van Nostrand, D.P.A.

## Thursday, July 31

---

### Concurrent Session KK

11 a.m. to 12:30 p.m.

#### 1994 National Employer Health Insurance Survey (NEHIS)

The 1994 NEHIS was designed to produce both State and national level estimates on employer-sponsored health insurance, the major source of private health care coverage. Topics covered included employee eligibility and enrollment and characteristics of offered plans such as premiums and covered services. The purpose of this session is to assist data users in accessing and using the data.

#### Chairperson:

Gail S. Poe, M.P.H.  
Special Assistant  
Division of Health Care Statistics  
National Center for Health Statistics

#### Panelists:

Karen F. Allen, M.B.A.<sup>‡</sup>  
Survey Statistician

Esther Hing, M.P.H.<sup>‡</sup>  
Survey Statistician

Christopher L. Moriarity, M.A.  
Mathematical Statistician  
Office of Research and Methodology

Abigail J. Moss<sup>‡</sup>  
Survey Statistician

Christina H. Park, Ph.D.<sup>‡</sup>  
Survey Statistician

Arlene B. Siller<sup>‡</sup>  
Systems Analyst

#### Session Organizer:

Gail S. Poe, M.P.H.

<sup>‡</sup>Division of Health Care Statistics  
National Center for Health Statistics

---

## Concurrent Session LL

**11 a.m. to 12:30 p.m.**

### **The Health and Health Care of Immigrants to the United States**

The health status and health care of immigrants will be described by researchers using data from the cross-sectional National Health Interview Survey, a longitudinal Australian survey, and the pilot study for a new longitudinal study in the United States.

#### **Chairperson:**

Gerry E. Hendershot, Ph.D.  
Assistant for Data Analysis and  
Dissemination  
Division of Health Interview Statistics  
National Center for Health Statistics

**11:05 a.m.**

*Pap Smear History Among  
Foreign-Born U.S. Resident Women*

Diane Marie St. George  
Doctoral Student  
Department of Epidemiology  
University of North Carolina

**11:20 a.m.**

*Public and Private Health Insurance of  
U.S. Foreign-Born Residents*

Cheryl Rinehart, B.A.\*  
Research Analyst  
Medical Technology and Practice  
Patterns Institute

**11:45 a.m.**

*The Health of Australia's Recent  
Immigrants: The Longitudinal Survey  
of Immigrants to Australia*

Erich V. Kliewer, Ph.D.\*  
Director  
Department of Preventive Oncology  
and Epidemiology  
Manitoba Cancer Treatment and  
Research Foundation

**12 noon**

*The New Immigrant Survey Pilot  
Study: Preliminary Results*

Mark Rosenzweig, Ph.D.\*  
Professor  
Department of Economics  
University of Pennsylvania

#### **Session Organizer:**

Gerry E. Hendershot, Ph.D.

\*Presenter of coauthored paper.

## Thursday, July 31

---

### Concurrent Session MM

**11 a.m. to 12:30 p.m.**

#### **Violence, Neglect, and Abuse**

This session will address the problems of collecting and using data on violence, neglect, and abuse, such as legal issues, dealing with administrative data, and current survey methodologies.

#### **Chairperson:**

Barbara D. Bates  
Research Coordinator  
National Center on Child Abuse and Neglect

**11 a.m.**

*Collecting Data on Child Abuse and Neglect*

Desmond K. Runyan, M.D., Dr.P.H.  
Professor of Social Medicine and Pediatrics  
Department of Social Medicine and Pediatrics  
University of North Carolina at Chapel Hill

**11:20 a.m.**

*Surveillance of Intentional Injuries Using Hospital Discharge Data*

Jay S. Buechner, Ph.D.  
Chief  
Office of Health Statistics  
Rhode Island Department of Health

**11:40 a.m.**

*Issues in Linking Pediatric Firearm-Related Deaths*

Barbara Pearce, M.P.H.\*  
Data and Policy Coordinator  
Children's Memorial Medical Center

#### **Session Organizer:**

Gloria A. Simpson, M.A.

\*Presenter of coauthored paper.

---

## Concurrent Session NN

**11 a.m. to 12:30 p.m.**

### **Monitoring the Health and Health Care of the Poor and Underserved**

This session will consider efforts to monitor the effects of changes in the health care delivery and financing systems on the health and health care of poor and underserved populations.

#### **Chairperson:**

Nancy Breen, Ph.D.  
Economist  
Applied Research Branch  
National Cancer Institute, NIH

**11 a.m.**

*Using the National Health Interview Survey to Monitor Access to Care for Vulnerable Populations*

Robin A. Cohen, Ph.D.\*  
Statistician  
Division of Health  
Interview Statistics  
National Center for Health Statistics

**11:20 a.m.**

*Monitoring the Impact of Managed Care on Medicaid and Uninsured Populations*

Betsy L. Thompson, M.D., M.S.P.H.\*  
Medical Epidemiologist  
Health Care and Aging Studies Branch  
National Center for Chronic Disease and Health Promotion  
Centers for Disease Control and Prevention

**11:40 a.m.**

*Monitoring Los Angeles County's Initiatives to Improve Access to Care for the Poor*

Michael Cousineau, Dr.P.H.  
Associate Professor  
School of Public Administration  
University of Southern California

**12 noon**

*Measuring the Health Impact of Social Policy: An Urban Perspective*

Seth Foldy, M.D.  
Medical Director  
City of Milwaukee Health Department

#### **Session Organizer:**

P. Ellen Parsons, Ph.D.

\*Presenter of coauthored paper.

## Program Session Organizers

---

Jack R. Anderson\*\*  
(Opening Ceremony)  
Deputy Director  
Office of the Center Director

Lynnette S. Araki, M.P.H.\*\* (P)  
Program Analyst  
Data Policy & Standards Staff  
Office of Data Standards, Program  
Development, and Extramural  
Programs

W. Edward Bacon, Ph.D., M.P.H.\*\*  
(C and H)  
Director  
Division of Health Care Statistics

Linda L. Bean\*\* (J)  
CD-ROM Project Coordinator  
Data Dissemination Branch  
Division of Data Services  
Office of Data Processing and Services

Kate M. Brett, Ph.D.\*\* (BB)  
Epidemiologist  
Division of Epidemiology

Audrey L. Burwell\*\* (AA)  
Grants Coordinator  
Office of Data Standards, Program  
Development, and Extramural  
Programs

Olivia Carter-Pokras, Ph.D. (Z)  
Public Health Analyst  
Office of Minority Health, PHS  
5515 Security Lane, Room 1000  
Rockville, Maryland 20852

Charles M. Croner, Ph.D.\*\* (Q)  
Statistical Geographer  
Office of Research and Methodology

Mark H. Epstein, Sc.D. (H)  
Executive Director  
National Association of Health Data  
Organizations  
254-B North Washington Street  
Falls Church, Virginia 22046-4517

Mary Anne Freedman\*\* (First Plenary)  
Director  
Division of Vital Statistics

Marjorie S. Greenberg, M.A.\*\*  
(D and S)  
Chief  
Data Policy and Standards Staff  
Office of Data Standards, Program  
Development, and Extramural  
Programs

Wilbur C. Hadden, M.A.\*\* (FF)  
Statistician  
Office of Data Standards, Program  
Development, and Extramural  
Programs

Ann M. Hardy, Dr.P.H.\*\* (U)  
Acting Director  
Division of Health Interview Statistics

Jane L. Harman, D.V.M., M.S.,  
Ph.D.\*\* (D)  
Preventive Medicine Resident  
Office of Data Standards, Program  
Development, and Extramural  
Programs

---

Kenneth W. Harris, M.S.\*\* (M)  
Special Assistant for Program  
Coordination and Statistical  
Standards  
Office of Research and Methodology

Katherine E. Heck\*\* (F)  
Fellow  
Office of Analysis, Epidemiology, and  
Health Promotion

Gerry E. Hendershot, Ph.D.\*\*  
(Third Plenary, Y, and LL)  
Deputy Director for Science  
Division of Health Interview Statistics

John W. Horm\*\* (R)  
Special Assistant to the Director  
Office of the Center Director

Clifford L. Johnson, M.S.P.H.\*\*  
(CC and GG)  
Deputy Director  
Division of Health Examination  
Statistics

Cille Kennedy, Ph.D. (W)  
Assistant Director for Disability  
Research  
Division of Epidemiology and Services  
Research  
National Institute of Mental Health  
5600 Fishers Lane, Room 10-105  
Rockville, Maryland 20857

Kenneth G. Keppel, Ph.D.\*\* (B)  
Acting Chief  
Reproductive Statistics Branch  
Division of Vital Statistics

John L. Kiely, Ph.D.\*\* (II)  
Chief  
Infant and Child Health Studies  
Office of Analysis, Epidemiology, and  
Health Promotion

Richard J. Klein, M.P.H.\*\* (G)  
Chief  
Data Monitoring and Analysis Branch  
Division of Health Promotion

Hsiang-Ching Kung, Ph.D.\*\* (HH)  
Survey Statistician  
Mortality Statistics Branch  
Division of Vital Statistics

Jennifer H. Madans, Ph.D.\*\* (L)  
Acting Associate Director for Vital and  
Health Statistics Systems

Donald J. Malec, Ph.D.\*\* (N)  
Mathematical Statistician  
Office of Research and Methodology

William D. Mosher, Ph.D.\*\* (A)  
Statistician  
Division of Vital Statistics

Nicholas F. Pace\*\* (K)  
Chief  
Systems Programming and Statistical  
Resources, Division of Vital Statistics

Margot A. Palmer, M.G.A.\*\* (O)  
Deputy Director  
Division of Data Services

---

P. Ellen Parsons, Ph.D., M.P.H.\*\*  
(Third Plenary and NN)  
Survey Statistician  
Division of Health Interview Statistics

Paul J. Placek, Ph.D.\*\* (EE)  
Statistician  
Data Policy and Standards Staff  
Office of Data Standards, Program  
Development, and Extramural  
Programs

Christine M. Plepys, M.S.\*\* (G)  
Statistician  
Division of Health  
Promotion Statistics

Gail S. Poe, M.P.H.\*\* (KK)  
Special Assistant to the Director  
Division of Health Care Statistics

Charles J. Rothwell\*\*  
(Second Plenary and T)  
Associate Director  
Office of Data Processing and Services

Gloria A. Simpson, M.A.\*\* (MM)  
Survey Statistician  
Division of Health Interview Statistics

James F. Spitler, M.S.\*\* (E)  
Project Team Leader  
Mortality Statistics  
Division of Vital Statistics

Joan F. Van Nostrand, D.P.A.\*\* (JJ)  
Project Director  
International Collaborative Effort on  
Aging  
Office of Data Standards, Program  
Development, and Extramural  
Programs

Jacqueline B. Wilson, B.A., M.P.H.\*\* (V)  
Health Statistician  
Division of Health Interview Statistics

Ronald W. Wilson, M.A.\*\* (X)  
NCHS AIDS Liaison  
Office of Analysis, Epidemiology, and  
Health Promotion

Stella M. Yu, Sc.D., M.P.H. (DD)  
Statistician  
Maternal and Child Health Bureau  
Health Resources and Services  
Administration  
5600 Fishers Lane, Room 18A-55  
Rockville, Maryland 20857

Alvan O. Zarate, Ph.D.\*\* (I)  
Confidentiality Officer  
Office of Planning, Budget, and  
Legislation

( ) Indicates session.

\*\*National Center for Health Statistics  
6525 Belcrest Road  
Hyattsville, Maryland 20782



## Program Session Chairpersons

---

Barbara D. Bates (MM)  
Research Coordinator  
National Center on Child Abuse and  
Neglect  
330 C Street, SW, Room 2320  
P.O. Box 1182  
Washington, DC 20013

Linda L. Bean\*\* (J)  
CD-ROM Project Coordinator  
Data Dissemination Branch  
Division of Data Services

Nancy Breen, Ph.D. (NN)  
Economist  
Applied Research Branch  
National Cancer Institute, NIH  
6130 Executive Boulevard,  
EPN Room 313  
Bethesda, MD 20892-7344

Kate M. Brett, Ph.D.\*\* (BB)  
Epidemiologist  
Division of Epidemiology

Audrey L. Burwell\*\* (AA)  
Grants Coordinator  
Office of Data Standards, Program  
Development, and Extramural  
Programs

Olivia Carter-Pokras, Ph.D. (Z)  
Public Health Analyst  
Office of Minority Health, PHS  
5515 Security Lane, Room 1000  
Rockville, Maryland 20852

Kathryn L. Coltin, M.P.H. (D)  
Director  
Clinical Measurement Systems and  
External Affairs  
Harvard Pilgrim Health Care  
10 Brookline Place West  
Brookline, Massachusetts 02146

Charles M. Croner, Ph.D.\*\* (Q)  
Statistical Geographer  
Office of Research and Methodology

Gail F. Fisher, Ph.D.\*\* (P)  
Associate Director  
Office of Data Standards, Program  
Development and Extramural  
Programs

Edward Fox, Ph.D. (HH)  
Policy Analyst  
Northwest Portland Area Indian Health  
Board  
520 SW Harrison, Suite 335  
Portland, Oregon 97201-5296

Daniel J. Friedman, Ph.D. (K)  
Assistant Commissioner  
Bureau of Health Statistics, Research,  
and Evaluation  
Massachusetts Department of Public  
Health  
250 Washington Street, 6th Floor  
Boston, Massachusetts 02108-4619

Wilbur C. Hadden, M.A.\*\* (FF)  
Statistician  
Office of Data Standards, Program  
Development, and Extramural  
Programs

---

Kenneth W. Harris, M.S.\*\* (M)  
Special Assistant for Program  
Coordination and Statistical  
Standards  
Office of Research and Methodology

Katherine E. Heck\*\* (F)  
Fellow  
Office of Analysis, Epidemiology, and  
Health Promotion

Gerry E. Hendershot, Ph.D.\*\*  
(Third Plenary and LL)  
Deputy Director for Science  
Division of Health Interview Statistics

John W. Horm\*\* (R)  
Special Assistant to the Director  
Office of the Center Director

Edward L. Hunter, M.A.\*\* (L)  
Associate Director  
Office of Planning, Budget, and  
Legislation

Lisa I. Iezzoni, M.D., M.Sc. (Y)  
Associate Professor of Medicine  
Division of General Medicine  
Beth Israel Hospital, Harvard Medical  
School  
330 Brookline Avenue, Room LY326  
Boston, Massachusetts 02215-5491

Teresa J. Jennings (E)  
State Registrar and Director  
Center for Health Statistics  
Washington State Department of  
Health  
1112 SE Quince Street, MS 7814  
Olympia, Washington 98504-7814

Clifford L. Johnson, M.S.P.H.\*\* (CC)  
Deputy Director  
Division of Health Examination  
Statistics

Judith Miller Jones (S)  
Director  
The National Health Policy Forum  
2021 K Street, NW, Suite 800  
Washington, DC 20052

Cille Kennedy, Ph.D. (W)  
Assistant Director for Disability  
Research  
Division of Epidemiology and Services  
Research  
National Institute of Mental Health  
5600 Fishers Lane, Room 10-105  
Rockville, Maryland 20857

Kenneth G. Keppel, Ph.D.\*\* (B)  
Acting Chief  
Reproductive Statistics Branch  
Division of Vital Statistics

John L. Kiely, Ph.D.\*\* (II)  
Chief  
Infant and Child Health Studies  
Office of Analysis, Epidemiology, and  
Health Promotion

Leonard Kirschner, M.D., M.P.H. (H)  
Vice President  
Health Care Initiatives  
State Health Care  
Electronic Data Systems  
9201 North 25th Avenue, Suite 200  
Phoenix, Arizona 85021

---

Richard J. Klein, M.P.H.\*\* (G)  
Chief  
Data Monitoring and Analysis Branch  
Division of Health Promotion

James M. Lepkowski, Ph.D. (U)  
Associate Research Scientist  
Institute for Survey Research  
University of Michigan  
Ann Arbor, Michigan 48106

Kurt R. Maurer, Ph.D.\*\* (GG)  
Chief  
Analysis Branch  
Division of Health Examination  
Statistics

Tommy McLemore\*\* (C)  
Deputy Director  
Division of Health Care Statistics

William D. Mosher, Ph.D.\*\* (A)  
Statistician  
Division of Vital Statistics

Margot A. Palmer, M.G.A.\*\* (O)  
Deputy Director  
Division of Data Services

Gail S. Poe, M.P.H.\*\* (KK)  
Special Assistant to the Director  
Division of Health Care Statistics

Dorothy P. Rice, B.A., Sc.D. (Hon.)  
(First Plenary)  
Professor Emeritus  
Institute for Health and Aging  
University of California at San  
Francisco  
3333 California Street, Room 340  
San Francisco, CA 94118

Charles J. Rothwell\*\* (T)  
Associate Director  
Office of Data Processing and Services

Katherine D. Seelman, Ph.D. (EE)  
Director  
National Institute on Disability and  
Rehabilitation Research  
600 Independence Avenue, SW  
Washington, DC 20202–2572

Edward J. Sondik, Ph.D.\*\*  
(Second Plenary)  
Director  
Office of the Center Director

Joan F. Van Nostrand, D.P.A.\*\* (JJ)  
Project Director  
International Collaborative Effort on  
Aging  
Office of Data Standards, Program  
Development, and Extramural  
Programs

P. Douglas Williams, M.S.\*\* (N)  
Chief  
Program Development Staff  
Office of Data Standards, Program  
Development, and Extramural  
Programs

---

Ronald W. Wilson, M.A.\*\* (X)  
NCHS AIDS Liaison  
Office of Analysis, Epidemiology, and  
Health Promotion

Jacqueline B. Wilson, B.A., M.P.H.\*\* (V)  
Health Statistician  
Division of Health Interview Statistics

Stella M. Yu, Sc.D., M.P.H. (DD)  
Statistician  
Maternal and Child Health Bureau  
Health Resource and Services  
Administration  
5600 Fishers Lane, Room 18A-55  
Rockville, Maryland 20857

Alvan O. Zarate, Ph.D.\*\* (I)  
Confidentiality Officer  
Office of Planning, Budget, and  
Legislation

( ) Indicates session.

\*\*National Center for Health Statistics  
6525 Belcrest Road  
Hyattsville, Maryland 20782

## Program Session Presenters

---

Joyce C. Abma, Ph.D.\*\* (A)  
Statistician  
Division of Vital Statistics

Michele C. Adler, M.P.H. (Y)  
Disability Policy Analyst  
Office of Disability, Aging, and  
Longterm Care Policy  
Office of the Assistant Secretary for  
Planning and Evaluation, DHHS  
200 Independence Avenue, SW,  
Room 424-E  
Washington, DC 20201

Greg R. Alexander, Sc.D., M.P.H. (DD)  
Professor  
Department of Maternal and Child  
Health  
University of Alabama School of  
Public Health  
1825 University Boulevard  
112 Mortimer Jordan Hall  
Birmingham, Alabama 35294-2010

Karen F. Allen, B.A., M.B.A.\*\* (KK)  
Survey Statistician  
Division of Health  
Care Statistics

Shanthi N. Ameratunga, M.D., M.P.H. (Y)  
Post-doctoral Fellow  
Center for Adolescent Health  
Promotion and Disease Prevention  
Johns Hopkins School of Hygiene and  
Public Health  
2007 East Monument Street  
Baltimore, Maryland 21205

Ross H. Arnett, III (L)  
Director  
Center for Cost and Financing Studies  
Agency for Health Care Policy and  
Research  
2101 East Jefferson Boulevard,  
Suite 500  
Executive Office Center  
Rockville, Maryland 20852

Edward L. Baker, M.D., M.P.H.  
(Second Plenary)  
Assistant Surgeon General and  
Director  
Public Health Practice Program Office,  
CDC  
1600 Clifton Road, NE, MS K-36  
Atlanta, Georgia 30333

Dave Baldrige (HH)  
Executive Director  
National Indian Council on Aging, Inc.  
10501 Montgomery Boulevard, NE,  
Suite 210  
Albuquerque, New Mexico 87111-3846

Karin A. Behe, M.A. (Y)  
Social Research Associate  
Frank Porter Graham Child  
Development Center  
University of North Carolina at Chapel  
Hill  
521 South Greensboro Street, CB 8185  
Chapel Hill, North Carolina  
27599-8185

Senda Benaissa, M.P.H.\*\* (Y)  
Fellow  
Division of Health Interview Statistics

---

Trude Bennett, Dr.P.H., M.S.W. (AA)  
Assistant Professor  
Department of Maternal and Child  
Health  
School of Public Health  
University of North Carolina  
CB 7400, 401 Rosenau Hall  
Chapel Hill, North Carolina  
27599-7400

Clancy Blair, Ph.D., M.P.H. (FF)  
NIH Postdoctoral Fellow  
Department of Psychology  
University of Miami  
5665 Ponce De Leon Boulevard  
Miami, Florida 33146

Phyllis V. Blood, M.P.A. (B)  
Coordinator  
State Center for Health Statistics  
Iowa Department of Public Health  
Lucas State Office Building  
Des Moines, Iowa 50319-0075

William Braithwaite, M.D., Ph.D.  
(Second Plenary)  
Senior Advisor  
Health Information Policy  
Office of the Assistant Secretary for  
Planning and Evaluation, DHHS  
200 Independence Avenue, SW,  
Room 440-D  
Washington, DC 20201

Bruce M. Brock, Ph.D., M.P.H. (F)  
President  
Information Transfer Systems, Inc.  
209 East Washington Street, Suite 200  
Ann Arbor, Michigan 48104-2011

Debra J. Brody\*\* (CC)  
Health Statistician  
Division of Health Examination  
Statistics

Scott C. Brown, Ph.D. (II)  
Associate Division Director  
Early Childhood Team  
Office of Special Ed Programs  
U.S. Department of Education  
330 C Street, SW, Room 3522  
Washington, DC 20201

Jay S. Buechner, Ph.D. (MM)  
Chief  
Office of Health Statistics  
Rhode Island Department of Health  
3 Capitol Hill  
Providence, Rhode Island 02908

Catharine W. Burt, Ed.D.\*\* (C)  
Chief  
Ambulatory Statistics Branch  
Division of Health Care Statistics

Bob Burton (I)  
Mathematical Statistician  
Statistical Standards and Methodology  
Group  
National Center for Education Statistics  
555 New Jersey Avenue, NW, Room 419  
Washington, DC 20208

Jean Campbell, Ph.D. (W)  
Research Assistant Professor  
Missouri Institute of Mental Health  
University of Missouri School of  
Medicine  
5247 Fyler Avenue  
St. Louis, Missouri 63139

---

Cavin P. Capps (R)  
Chief  
Survey Modernization Programming  
Branch  
Demographic Surveys Division  
U.S. Bureau of the Census  
Room 3364  
Washington, DC 20233

Olivia Carter-Pokras, Ph.D. (G)  
Public Health Analyst  
Office of Minority Health, PHS  
5515 Security Lane, Room 1000  
Rockville, Maryland 20852

Neil M. Casey, B.A., M.S. (F)  
Director  
Health Data Management Division  
Akron City Health Department  
177 South Broadway  
Akron, Ohio 44308-1726

Michele L. Casper, Ph.D. (HH)  
Epidemiologist  
Division of Adult and Community  
Health  
National Center for Chronic Disease  
Prevention and Health Promotion,  
CDC  
4770 Buford Highway, NE, MS K-47  
Atlanta, Georgia 30341-3724

Anand Chabra, M.D., M.P.H. (W)  
Medical Epidemiologist  
Maternal and Child Health Branch  
California Department of Health  
Services  
2151 Berkeley Way, Annex 4,  
Room 200  
Berkeley, California 94704

Anjani Chandra, Ph.D.\*\* (A)  
Demographic Statistician  
National Survey of Family Growth  
Division of Vital Statistics

Susan D. Cochran, Ph.D., M.S. (X)  
Professor  
Department of Epidemiology  
School of Public Health  
University of California  
10833 Le Conte Boulevard,  
Box 951772  
Los Angeles, California 90095-1772

Bruce B. Cohen, Ph.D. (R)  
Director  
Research and Epidemiology  
Bureau of Health Statistics, Research,  
and Evaluation  
Massachusetts Department of Public  
Health  
250 Washington Street  
Boston, Massachusetts 02108-4619

Robin A. Cohen, Ph.D.\*\* (NN)  
Health Statistician  
Division of Health Interview Statistics

---

Maria delCarmen Collado (Z)  
Vice President of Marketing and  
Member Services Center Care  
555 West 57th Street, 18th Floor  
New York, New York 10019

Chiquita A. Collins, Ph.D. (V)  
Assistant Professor  
Department of Sociology  
The University of Illinois College of  
Liberal Arts and Sciences  
1007 West Harrison Street  
Chicago, Illinois 60607-7140

Norm Constantine, Ph.D. (S)  
Director  
School and Community Health  
Research  
WestEd Regional Education Laboratory  
1118 Garden Lane  
Lafayette, California 94549-3110

Michael Cousineau, Dr.P.H. (NN)  
Associate Professor  
School of Public Administration  
University of California  
Los Angeles, California 90089-0012

Helene Cross, M.A. (X)  
Research Scientist I  
Division of AIDS Prevention and  
Control  
New Jersey Department of Health and  
Senior Services  
50 East State Street, CN 363  
Trenton, New Jersey 08625-0363

Lester R. Curtin, Ph.D.\*\* (M and GG)  
Acting Associate Director  
Office of Research and Methodology

Marcie L. Cynamon, M.A.\*\* (L)  
Special Assistant to the Director  
Division of Health Interview Statistics

William Davis, Ph.D. (N)  
Senior Statistician  
Klemm Analysis Group, Inc.  
6525 Belcrest Road, Room 209  
Hyattsville, Maryland 20782

Speed Davis (EE)  
Executive Assistant to the Chairperson  
National Council on Disability  
1331 F Street, NW, Suite 1050  
Washington, DC 20004-1107

Debbie McCune Davis (H)  
Project Director  
The Arizona Partnership for Infant  
Immunizations  
320 E. McDowell Road  
Phoenix, Arizona 85004

Don Eugene Detmer, M.D.  
(First Plenary)  
Senior Vice President  
University of Virginia  
Rotunda NW Wing, P.O. Box 9016  
Charlottesville, Virginia 22906

George T. Duncan, Ph.D. (I)  
Professor of Statistics  
Heinz School  
Carnegie Mellon University  
5000 Forbes Avenue  
Pittsburgh, Pennsylvania 15213



---

Natalie E. Dupree\*\* (CC)  
Health Statistician  
Division of Health Examination  
Statistics

John L. Eltinge, Ph.D. (GG)  
Professor  
Department of Statistics  
Texas A&M University  
College Station, Texas 77843

Carroll L. Estes, Ph.D. (W)  
Director  
Institute for Health and Aging  
University of California at San  
Francisco  
Box 0646  
San Francisco, California 94143-0646

Trena M. Ezzati-Rice, M.S.\*\* (M)  
Mathematical Statistician  
Office of Research and Methodology

Robert C. Ficke, M.A. (II)  
Senior Study Director  
Westat, Inc.  
1650 Research Boulevard  
Rockville, Maryland 20850

Jean S. Findlay\*\* (CC)  
Chief  
Survey Operations Branch  
Division of Health Examination  
Statistics

Seth Foldy, M.D. (NN)  
Medical Director  
City of Milwaukee Health Department  
841 W. Broadway Avenue, Room 102  
Milwaukee, Wisconsin 53202

William F. Forbes, Ph.D., D.Sc. (EE)  
Research Associate  
Clinical Epidemiology Unit  
Elizabeth Bruyere Hospital  
43 Bruyere Street, Suite 3997  
Ottawa, Ontario K1N 5C8, Canada

Jill L. France (K)  
Chief  
Bureau of Vital Records  
Iowa Department of Public Health  
321 East 12th Street  
Des Moines, Iowa 50319-0075

Carol Friedman, D.O. (B)  
Medical Epidemiologist  
Bureau of State Health Data and  
Policy Analysis  
Texas Department of Health  
1100 West 49th Street  
Austin, Texas 78756-3199

Daniel J. Friedman, Ph.D. (T)  
Assistant Commissioner  
Bureau of Health Statistics, Research,  
and Evaluation  
Massachusetts Department of Public  
Health  
250 Washington Street, 6th Floor  
Boston, Massachusetts 02108-4619

Katherine Ganz, M.D., M.S.H.A. (H)  
Director  
New Mexico Health Policy Commission  
435 St. Michael's Drive, Suite A202  
Santa Fe, New Mexico 87505

---

Arline T. Geronimus, Sc.D. (AA)  
Associate Professor  
Department of Health Behavior and  
Health Education  
University of Michigan School of  
Public Health  
1420 Washington Heights  
Ann Arbor, Michigan 48109–2029

Joseph C. Gfroerer (N)  
Supervisory Mathematical Statistician  
Office of Applied Studies  
Substance Abuse and Mental Health  
Services Administration  
5600 Fishers Lane, Room 16C-06  
Rockville, Maryland 20857

Jimmie D. Givens, M.P.H.\*\* (M)  
Acting Chief  
Statistical Technology Staff  
Office of Research and Methodology

Marsha R. Gold, Sc.D. (JJ)  
Senior Fellow  
Mathematica Policy Research, Inc.  
600 Maryland Avenue, SW, Suite 550  
Washington, DC 20024–2512

Joe Fred Gonzalez, Jr., M.S.\*\* (E)  
Mathematical Statistician  
Office of Research and Methodology

Michael J. Goodman, Ph.D. (D)  
Research Investigator  
Health Partners Research  
Group Health Foundation  
8100 34th Avenue South  
P.O. Box 1309  
Minneapolis, Minnesota 55440

Diane Greeneich, D.N.Sc. (Z)  
Consultant  
Health Care Systems Management, Inc.  
6927 East Friess Drive  
Scottsdale, Arizona 85254

Paul K. Halverson, Dr.P.H., M.H.S.A.  
(D and F)  
Assistant Professor  
Department of Health Policy and  
Administration  
School of Public Health  
University of North Carolina  
1101 McGavran-Greenberg Building  
CB 7400  
Chapel Hill, North Carolina  
27599–7400

Ann M. Hardy, Dr.P.H.\*\* (U)  
Acting Director  
Division of Health Interview Statistics

Esther Hing, M.P.H.\*\* (KK)  
Survey Statistician  
Division of Health Care Statistics

Martha M. Holliday, M.P.H. (HH)  
Tribal Service Program Project Director  
Northwest Portland Area Indian Health  
Board  
520 SW Harrison Street, Suite 335  
Portland, Oregon 97201

John W. Horm\*\* (I)  
Special Assistant to the Director  
Office of the Center Director

---

John F. Hough, Dr.P.H. (II)  
Prevention Effectiveness Fellow  
Disabilities Prevention Program  
National Center for Environmental  
Health, CDC  
4770 Buford Highway, MS F-29  
Atlanta, Georgia 30341

Debbie S. Indyk, Ph.D., M.S. (X)  
Clinical Associate Professor  
Department of Community Medicine  
Mount Sinai Medical Center  
19 East 98th Street, Box 1045  
New York, New York 10029

Leonard Indyk, Ph.D. (II)  
President  
BRADLI Associates  
662 Queen Anne Road  
Teaneck, New Jersey 07666

Clifford L. Johnson, M.S.P.H.\*\*  
(L and GG)  
Deputy Director  
Division of Health Examination  
Statistics

David P. Johnson\*\* (K)  
Survey Statistician  
Systems Programming and Statistical  
Resources Branch  
Division of Vital Statistics

Edward J. Johnson II, M.S.(O)  
State Registrar  
Center for Health Statistics  
Oregon Health Division  
800 NE Oregon Street, Room 215  
Portland, Oregon 97232

Robert L. Kane, M.D. (JJ)  
Endowed Chair in Long Term Care and  
Aging  
University of Minnesota School of  
Public Health  
Mayo Box 197  
Minneapolis, Minnesota 55455

Susan Katz, M.P.H. (K)  
Public Health Practice Program Office  
Centers for Disease Control and  
Prevention  
4770 Buford Highway, NE, MS K-37  
Atlanta, GA 30341

David W. Keer, M.A.\*\* (E)  
Survey Statistician  
Mortality Statistics Branch  
Division of Vital Statistics

Sallie Keller-McNulty, Ph.D. (R)  
Professor, Department of Statistics  
Kansas State University  
Dickens Hall  
Manhattan, Kansas 66502

Richard J. Klein, M.P.H.\*\* (G)  
Chief  
Data Monitoring and Analysis Branch  
Division of Health Promotion

Erich V. Kliewer, Ph.D. (LL)  
Director  
Department of Preventive Oncology  
and Epidemiology  
Manitoba Cancer Treatment and  
Research Foundation  
100 Olivia Street  
Winnipeg, Manitoba R3E 0V9, Canada

---

David Korn, M.D. (P)  
Distinguished Scholar in Residence  
Division of Biomedical Research  
Association of American Medical  
Colleges  
2450 N Street, NW  
Washington, DC 20037-1127

Nancy Krieger, Ph.D. (AA)  
Assistant Professor  
Department of Health and Social  
Behavior  
Harvard School of Public Health  
677 Huntington Avenue  
Boston, Massachusetts 02115

Hsiang-Ching Kung, Ph.D.\*\* (E)  
Survey Statistician  
Mortality Statistics Branch  
Division of Vital Statistics

Sandy L. Kwong, M.P.H. (DD)  
Senior Research Associate  
California Cancer Registry  
California Department of Health  
Services  
Mail Station #592, P.O. Box 942732  
Sacramento, California 94234-7320

Eric L. Lang, Ph.D. (EE)  
Director  
Research Support Group  
Sociometrics Corporation  
170 State Street, Suite 260  
Los Altos, California 94022-2812

Thomas A. LaVeist, Ph.D.  
(Third Plenary and AA)  
Assistant Professor of Health Policy  
and Management  
Johns Hopkins University School of  
Hygiene and Public Health  
624 North Broadway, 4th Floor  
Baltimore, Maryland 21205

Victoria Lazariu, M.Sc. (N)  
Ph.D. Student Intern  
Division of Nutrition  
New York State Department of Health  
II University Place, 2nd Floor  
Albany, New York 12203-3399

Thomas Edward Lengyel, Ph.D. (FF)  
Director of Research  
Family Service America  
11700 West Lake Park Drive  
Milwaukee, Wisconsin 53224

Cheri I. Levenson, M.P.A. (Z)  
Program Evaluation Consultant  
Office of Women's and Children's  
Health  
Arizona Department of Health Services  
411 North 24th Street  
Phoenix, Arizona 85008-6013

Donald J. Lollar, Ed.D. (EE)  
Visiting Scientist  
Disabilities Prevention Program  
National Center for Environmental  
Health, CDC  
4770 Buford Highway, NE, MS F-29  
Atlanta, Georgia 30341

---

Marlene M. Lugg, Dr.P.H. (D)  
Senior Research Associate  
Kaiser Permanente  
393 East Walnut Street, Room 991  
Pasadena, California 91188

Jennifer H. Madans, Ph.D.\*\* (L and U)  
Acting Associate Director  
Office of Vital and Health Statistics  
Systems

Deborah R. Maiese, M.P.A. (G)  
Senior Prevention Policy Advisor  
Office of Disease Prevention and  
Health Promotion, DHHS  
200 Independence Avenue, SW,  
Room 738-G  
Washington, DC 20201

Katie Maslow, M.S.W. (JJ)  
Director  
Initiative on Alzheimer's Disease and  
Managed Care  
National Alzheimer's Association  
1319 F Street, NW, Suite 710  
Washington, DC 20004

Kurt R. Maurer, Ph.D.\*\* (CC)  
Chief  
Analysis Branch, Division of Health  
Examination Statistics

Vickie M. Mays, Ph.D. (V)  
Professor  
Department of Psychology  
University of California at Los Angeles  
405 Hilgard Avenue  
1285 Franz Hall, Box 951563  
Los Angeles, California 90095-1563

Margaret A. McDowell\*\* (CC)  
Health Statistician  
Division of Health  
Examination Statistics

Daniel L. McGee, Ph.D. (AA)  
Professor and Head  
Biostatistics Section  
Preventive Medicine and Epidemiology  
Loyola University Medical Center  
2160 South First Avenue  
Maywood, Illinois 60153

Lisa McGiffert, B.A. (H)  
Senior Policy Analyst  
Southwest Regional Office  
Consumers Union  
1300 Guadalupe Street, Suite 100  
Austin, Texas 78701

Sharon McKenna, M.H.A. (T)  
Project Manager  
Center for Health Information  
Georgia Division of Public Health  
2 Peachtree Street, Room 3-518  
Atlanta, Georgia 30303-3186

Geraldine M. McQuillan, Ph.D.\*\* (CC)  
Senior Infectious Disease  
Epidemiologist  
Division of Health Examination  
Statistics

Steven J. Melly, M.S. (Q)  
Staff Scientist  
Silent Spring Institute  
29 Crafts Street  
Newton, Massachusetts 02158

---

Daniel Mendelson, M.P.P. (O)  
Vice President  
The Lewin Group  
9302 Lee Highway, Suite 500  
Fairfax, Virginia 22031

Christopher Moriarity, M.A.\*\* (KK)  
Mathematical Statistician  
Office of Research and Methodology

William D. Mosher, Ph.D.\*\* (A)  
Statistician  
Division of Vital Statistics

Abigail Moss\*\* (KK)  
Survey Statistician  
Division of Health Care Statistics

Kristine A. Mulhorn, M.H.S.A., Ph.D.  
(EE)  
Full-time Faculty  
Health Care Department  
University of Michigan at Flint  
303 East Kearsley Street, 402 MSB  
Flint, Michigan 48502-2186

Lloyd F. Novick, M.D., M.P.H.  
(First Plenary)  
Commissioner  
Onondaga County Department of  
Health  
421 Montgomery Street  
9th Floor, Civic Center  
Syracuse, NY 13202

Inge M. Okkes, M.A., Ph.D. (S)  
Research Coordinator  
Transition Project  
Department of Family Medicine  
Academic Medical Centre  
University of Amsterdam  
Meibergdreef 15  
1105 AZ Amsterdam, The Netherlands

Chang Gi Park, Ph.D. (DD)  
Research Specialist  
Public Health, Mental Health, and  
Administrative Nursing  
The University of Illinois College of  
Nursing  
845 South Damen Avenue  
Chicago, Illinois 60612-7350

Christina Park, Ph.D.\*\* (KK)  
Survey Statistician  
Division of Health Care Statistics

Greg F. Parsons, B.Sc. (BB)  
Health Research Analyst  
Health Statistics Division  
Statistics Canada  
R.H. Coats Building, 16th Floor  
Tunney's Pasture  
Ottawa Ontario K1A 0T6, Canada

Barbara Pearce, M.P.H., M.U.P. (MM)  
Data and Policy Coordinator  
Children's Memorial Medical Center  
2300 Children's Plaza, #88  
Chicago, Illinois 60614

---

Brian Pearl, M.A. (BB)  
Policy Analyst  
Policy and Consultation Branch  
Women's Health Bureau  
Health Canada  
Tunneys Pasture, 0911A  
Ottawa Ontario K1A 0K9, Canada

Linda J. Piccinino, M.P.S. (R)  
Statistician  
Reproductive Statistics Branch  
Division of Vital Statistics  
National Center for Health Statistics  
6525 Belcrest Road, Room 840  
Hyattsville, MD 20782

Stephen P. Pickard, M.D. (B)  
Medical Epidemiologist  
Office of Chronic Disease and Health  
Promotion  
Kansas Department of Health and  
Environment  
900 SW Jackson, Room 901 North  
Topeka, Kansas 66612-1290

Robert Pokras\*\* (C)  
Chief  
Hospital Care Statistics Branch  
Division of Health Care Statistics

Gerald F. Pyle, Ph.D. (Q)  
Professor of Health Promotion  
College of Nursing and Health  
Professions  
University of North Carolina at  
Charlotte  
9201 University City Boulevard  
Charlotte, North Carolina 28223-0001

Phillip R. Quickenton (K)  
Assistant Director  
Bureau of Production  
Systems Management  
New York State Department of Health  
733 Broadway  
Albany, New York 12207

James C. Reading, Ph.D. (T)  
Professor  
University of Utah School of Medicine  
410 Chipeta Way, Suite 222  
Salt Lake City, Utah 84108

Timothy Reardon (J)  
Program Scientist  
Vector Research, Inc.  
2536 Packard Road, P.O. Box 1506  
Ann Arbor, Michigan 48106

Thomas B. Richards, M.D. (Q)  
Medical Officer  
Public Health Practice Program Office,  
CDC  
4770 Buford Highway, NE, MS K-39  
Atlanta, Georgia 30341-3724

Cheryl S. Rinehart, B.A. (LL)  
Research Analyst  
Medical Technology and Practice  
Patterns Institute  
2121 Wisconsin Avenue, NW,  
Suite 220  
Washington, DC 20007

---

Robert Rolfs, M.D. (B)  
Director  
Office of Public Health Data  
Utah Department of Health  
288 North 1460 West  
Salt Lake City, Utah 84114

Mark Rosenzweig, Ph.D. (LL)  
Professor  
Department of Economics  
University of Pennsylvania  
3718 Locust Walk  
Philadelphia, Pennsylvania  
19104-6297

David S. Rubin, M.P.A. (BB)  
Project Research Specialist III  
Division of Planning, Policy and  
Resource Development  
New York State Department of Health  
Corning Tower, Room 1642  
Empire State Plaza  
Albany, New York 12237

Desmond K. Runyan, M.D., Dr.P.H.  
(MM)  
Professor of Social Medicine and  
Pediatrics  
University of North Carolina at Chapel  
Hill  
Medical School CB 7240, Wing D  
Chapel Hill, North Carolina  
27599-7240

Agnes Rupp, Ph.D. (W)  
Chief  
Mental Health Economics Research  
Program  
Division of Epidemiology and Services  
Research  
National Institute of Mental Health  
5600 Fishers Lane, Room 10C-06  
Rockville, Maryland 20857

William J. Scanlon, Ph.D. (JJ)  
Director  
Health Financing and Systems Issues  
U.S. General Accounting Office  
441 G Street, NW, HEHS/HFS  
Washington, DC 20548

Edward L. Schor, M.D. (II)  
Medical Director  
Division of Family and Community  
Health  
Iowa Department of Public Health  
321 East 12th Street  
Des Moines, Iowa 50319

Catherine Schumacher, M.D.,  
M.S.P.H. (B)  
Chronic Disease Epidemiologist and  
Program Manager  
Section of Epidemiology  
Alaska Division of Public Health  
3601 C Street, Suite 540  
P.O. Box 240240  
Anchorage, Alaska 99524

Chester Scott, B.A.\*\* (E)  
Survey Statistician  
Mortality Statistics  
Branch, Division of Vital Statistics



---

Fred Seitz, Ph.D.\*\* (HH)  
Statistician  
Division of Health  
Promotion Statistics

Deborah E. Sellers, Ph.D. (JJ)  
Project Director  
Education Development Center  
55 Chapel Street  
Newton, Massachusetts 02158

Kirsten D. Senturia, Ph.D. (F)  
Program Analyst, EPE Unit  
Seattle/King County Department of  
Public Health  
First Interstate Center  
999 Third Avenue, Suite 1200  
Seattle, Washington 98104-4039

Ravi K. Sharma, Ph.D. (F)  
Professor  
Health Services Administration  
University of Pittsburgh Graduate  
School of Public Health  
Parran Hall, Room 228  
Pittsburgh, Pennsylvania 15261

T. Joseph Sheehan, Ph.D. (Q)  
Professor  
Department of Community Medicine  
and Health Care  
University of Connecticut School of  
Medicine  
Farmington, Connecticut 06030-6205

Marjorie M. Shultz, J.D. (P)  
Professor of Law  
Boalt Hall School of Law  
University of California at Berkeley  
Berkeley, California 94720

Kathryn A. Silbersiepe, M.D., M.S.\*\* (U)  
Acting Chief  
Illness and Disability Statistics Branch  
Division of Health Interview Statistics

Arlene B. Siller, B.S.\*\* (KK)  
Systems Analyst  
Division of Health  
Care Statistics

James F. Spitler, M.S.\*\* (E)  
Project Team Leader  
Mortality Statistics Branch, Division of  
Vital Statistics

Diane Marie St. George, M.A. (LL)  
Doctoral Student  
Department of Epidemiology  
School of Public Health  
University of North Carolina  
CB 7400  
Chapel Hill, North Carolina  
27599-7400

Claudia Steiner, M.D., M.P.H. (FF)  
Research Physician  
Center for Organization and Delivery  
Studies  
Agency for Health Care Policy and  
Research  
2101 East Jefferson Street, Suite 500  
Rockville, Maryland 20852

P. Clay Stephens, P.A., M.Phil. (X)  
Research Scientist  
Division of Epidemiology  
New York State Department of Health  
Corning Tower, Room 729, ESP  
Albany, New York 12237

---

Genevieve W. Strahan\*\* (C)  
Survey Statistician  
Long Term Care Statistics Branch  
Division of Health Care Statistics

Anne K. Stratton, M.S.\*\* (U)  
Health Statistician  
Division of Health Interview Statistics

Patrick F. Sullivan, Ph.D. (P)  
Executive Director  
Computer Ethics Institute  
P.O. Box 42672  
Washington, DC 20015

Marianne Sullivan, B.A., M.P.H. (HH)  
Epidemiologist, EPE Unit  
Seattle-King County Department of  
Public Health  
110 Prefontaine Place South, Suite 600  
Seattle, Washington 98104

Jane C. Swart, Ph.D., R.N., F.A.A.N. (S)  
Dean and Professor  
College of Nursing and Health  
Wright State University  
3640 Colonel Glenn Highway  
Dayton, Ohio 45435

Betsy L. Thompson, M.D., M.S.P.H.  
(NN)  
Medical Epidemiologist  
Health Care and Aging Studies Branch  
National Center for Chronic Disease  
and Health Promotion, CDC  
4770 Buford Highway, NE, MS K-30  
Atlanta, Georgia 30341-3724

Robert Valdez, Ph.D. (Z)  
Professor  
Health Policy and Management  
School of Public Health  
University of California at Los Angeles  
Los Angeles, California 90095-1772

Lois M. Verbrugge, Ph.D., M.P.H. (BB)  
Senior Scientist, Westat, Inc.  
Distinguished Research Scientist  
Institute of Gerontology  
University of Michigan  
300 North Ingalls  
Ann Arbor, Michigan 48109-2007

Diane K. Wagener, Ph.D.\*\* (G)  
Acting Director  
Division of Health  
Promotion Statistics  
Office of Analysis, Epidemiology, and  
Health Promotion

Rodrick Wallace, Ph.D. (FF)  
Research Scientist  
Department of Mental Health  
Epidemiology Research  
New York State Psychiatric Institute  
722 West 168th Street  
New York, New York 10032

Katherine K. Wallman, B.A.  
(First Plenary)  
Chief Statistician  
U.S. Office of Management and  
Budget  
New Executive Office Building, Rm  
10201  
Washington, DC 20503

---

M. Elizabeth Ward (First Plenary)  
Assistant Secretary  
Epidemiology Health Statistics Division  
Washington State Department of  
Health  
P.O. Box 47811  
Olympia, Washington 98504-7811

Harold B. Weiss, M.S., M.P.H. (O)  
Epidemiologist  
Emergency Medicine  
Center for Injury Research and Control  
University of Pittsburgh  
230 McKee Place, Suite 400  
Pittsburgh, Pennsylvania 15213

Doni L. Wilder, M.A. (HH)  
Executive Director  
Northwest Portland Area Indian Health  
Board  
520 SW Harrison Street, Suite 335  
Portland, Oregon 97201

David R. Williams, Ph.D., M.P.H. (V)  
Associate Research Scientist  
Institute for Social Research  
University of Michigan  
P.O. Box 1248  
Ann Arbor, Michigan 48106-1248

Gordon B. Willis, Ph.D.\*\* (M)  
Survey Statistician  
Office of Research and Methodology

John W. Wilson, M.S. (J)  
Nutritionist  
Food Surveys Research Group  
Agricultural Research Service  
U.S. Department of Agriculture  
4700 Riverdale Road, Unit 83  
Riverdale, Maryland 20737-1234

Barbara P. Yawn, M.D., M.Sc. (P)  
Director  
Department of Research and Education  
Olmsted Medical Center  
210 Ninth Street, SE  
Rochester, Minnesota 55904

Laura V. Zayatz, M.S. (I)  
Mathematical Statistician  
Confidentiality Staff  
U.S. Bureau of the Census  
SRD 3224-4  
Washington, DC 20233

( ) Indicates session.

\*\*National Center for Health Statistics  
6525 Belcrest Road  
Hyattsville, Maryland 20782

## Poster Presenters

---

Thomas J. Abernathy, Ph.D.  
Director  
Central West Health Planning  
Information Network  
10 George Street, Suite 301B  
Hamilton, Ontario L8P 1C8, Canada

Steven Barnett, M.D.  
Clinical Senior Instructor  
Department of Family Medicine  
University of Rochester  
885 South Avenue  
Rochester, New York 14620

Wilma Barshaw, M.S., M.P.H.  
Statistical Analyst  
Center for Health Information  
Georgia Department of Human  
Resources  
Two Peachtree Street, Room 3.560,  
3rd Floor  
Atlanta, Georgia 30303-3186

Jay S. Buechner, Ph.D.  
Chief  
Office of Health Statistics  
Rhode Island Department of Health  
3 Capitol Hill  
Providence, Rhode Island 02908

Katryne Lukens Bull, M.P.H., C.H.E.S.  
Community Assessment Liaison  
Office of the Secretary  
Washington State Department of  
Health  
1112 Southeast Quince  
Olympia, Washington 98504-7890

Linda S. Chan, Ph.D.  
Professor  
School of Medicine  
University of Southern California  
1200 North State Street  
General Hospital, Room 12-900  
Los Angeles, California 90033

Ann Marie Collins, M.S.N., R.N., C.S.  
Clinical Instructor  
College of Nursing  
Wayne State University  
6001 Cass Avenue  
Detroit, Michigan 48202

Suzanne F. Cook, Ph.D.  
Principal Epidemiologist  
Worldwide Epidemiology Department  
Glaxo Wellcome, Inc.  
5 Moore Drive  
Research Triangle Park, North Carolina  
27709

Wendy L. Davis, M.S.  
Research Psychologist  
Center for Survey Methods Research  
U.S. Bureau of the Census  
FB-4, Room 3125  
Washington, DC 20233

Thomas Patrick Doremus, M.S.  
Health Policy Analyst  
Public Health Foundation  
1220 L Street, NW, #350  
Washington, DC 20005

---

Gregory Arthur Elmes, Ph.D.  
Professor of Geography  
Department of Geology and  
Geography  
West Virginia GIS Technical Center  
425 White Hall, P.O. Box 6300  
Morgantown, West Virginia  
26506-6300

Diane L. Frankenfield, B.S.Pharm.,  
Dr.P.H.  
Epidemiologist  
Center for Clinical Measurement and  
Improvement  
Health Care Financing Administration  
7500 Security Boulevard  
Baltimore, Maryland 21244-1850

Ralph L. Franklin, B.A.  
Policy Analyst and Information  
Systems Manager  
Sigma One Corporation  
P.O. Box 12836  
Research Triangle Park, North Carolina  
27709

Lynne Fullerton, M.A.  
Research Specialist  
Department of Emergency Medicine  
University of New Mexico School of  
Medicine  
Ambulatory Care Center, 4-W  
Albuquerque, New Mexico  
87131-5246

Michael J. Gill, B.S.E.E.  
Electronics Engineer  
Communications Engineering Branch  
National Library of Medicine  
8600 Rockville Pike  
Bethesda, Maryland 20894

Anna B. Hamilton, M.S.  
Project Director  
The CDM Group, Inc.  
5530 Wisconsin Avenue  
Chevy Chase, Maryland 20815

Donald E. Harrop, M.D.  
President  
KePRO  
777 East Park Drive  
Harrisburg, Pennsylvania 17111

William D. Henriques, Ph.D., M.S.P.H.  
Environmental Toxicologist  
Division of Health Assessment and  
Consultation  
Agency for Toxic Substances and  
Disease Registry, CDC  
1600 Clifton Road, NE, MS E-56  
Atlanta, Georgia 30333

Gail R. Janes, Ph.D., M.S.  
Epidemiologist  
Division of Adult and Community  
Health  
National Center for Chronic Disease  
Prevention and Health Promotion,  
CDC  
4770 Buford Highway, NE, MS K-30  
Atlanta, Georgia 30341

---

Russell S. Kirby, Ph.D., M.S., F.A.C.E.  
Associate Professor and Coordinator of  
Research  
Department of Obstetrics and  
Gynecology  
University of Wisconsin Medical School  
2000 West Kilbourn, Room W327,  
Box 342  
Sinai Samaritan Medical Center  
Milwaukee, Wisconsin 53201-0342

Greg F. Parsons, B.Sc.  
Health Research Analyst  
Health Statistics Division  
Statistics Canada  
R.H. Coats Building, 16th Floor  
Tunney's Pasture  
Ottawa Ontario K1A 0T6, Canada

Dorothy A. Rhoades, M.D.  
Senior Fellow Indian Health  
Native American Center of Excellence  
University of Washington School of  
Medicine  
Campus Box 357430  
Seattle, Washington 98195-7430

Susan Schechter, M.A.  
Survey Statistician  
Office of Research and Methodology  
National Center for Health Statistics  
6525 Belcrest Road, Room 915  
Hyattsville, Maryland 20782

Marie-Jo Sourty  
Senior Researcher  
CREDES  
1 rue Paul Cezanne  
75008 Paris, France

William D. Spears, Ph.D.  
Director  
Community Health Information system  
University of Texas School of Public  
Health  
1200 Herman Pressler Boulevard  
Houston, Texas 77030

Donna P. Szot, R.N., B.S.N.  
Executive Assistant  
Bergen County Department of Health  
Services  
327 Ridgewood Avenue  
Paramus, New Jersey 07652-4895

Jason Tung, M.Eng., B.Sc.  
Occupational Hygienist  
Occupational Disease Panel  
69 Yonge Street, Suite 1004  
Toronto, Ontario M5E 1K3, Canada

Daphne Bien Walters, M.S.  
Chief  
Information Resources Branch  
Information Resources Management  
Office  
Agency for Toxic Substances and  
Disease Registry, CDC  
1600 Clifton Road, NE, MS D-45  
Atlanta, Georgia 30333

7-0417  
PHS 97-1016