

Infant Mortality in the United States, 2024: Data From the Period Linked Birth/Infant Death File

by Danielle M. Ely, Ph.D., and Anne K. Driscoll, Ph.D.

Abstract

Objectives—This report presents final 2024 infant mortality statistics by age at death, maternal race and Hispanic origin, maternal age, gestational age, leading causes of death, and maternal state of residence. Trends in infant mortality are also examined.

Methods—Descriptive tabulations of data are presented and interpreted for infant deaths and infant mortality rates using the 2024 period linked birth/infant death file. The linked birth/infant death file is based on birth and death certificates registered in all 50 states and the District of Columbia.

Results—A total of 20,048 infant deaths were reported in the United States in 2024, which was not significantly different from 2023 (20,162). The U.S. infant mortality rate was 5.52 infant deaths per 1,000 live births, which was not significantly different from the rate in 2023 (5.61). The change in the neonatal mortality rate from 3.65 in 2023 to 3.66 in 2024 was not significant. The postneonatal mortality rate declined 4.6% from 1.96 in 2023 to 1.87 in 2024. Changes in mortality rates for infants by maternal race and Hispanic origin and among Hispanic-origin subgroups were not significant. Infants of Black non-Hispanic women had the highest mortality rate (10.98) in 2024, followed by infants of American Indian and Alaska Native non-Hispanic (9.20) and Native Hawaiian or Other Pacific Islander non-Hispanic (7.90), Hispanic (4.88), White non-Hispanic (4.41), and Asian non-Hispanic (3.72) women. The mortality rate decreased from 2023 to 2024 for infants born at 39–40 weeks of gestation (1.64 to 1.55), but the rate change was not significantly different for other gestational age categories. Among the five leading causes of infant death in 2024, mortality rates for sudden infant death syndrome declined compared with 2023. Infant mortality rates by state for 2024 ranged from a low of 2.97 in New Hampshire to a high of 9.65 in Mississippi.

Keywords: maternal and infant characteristics • vital statistics • National Vital Statistics System (NVSS)

Introduction

This report presents infant mortality statistics based on data from the 2024 period linked birth/infant death file. Infant mortality and mortality rates are described by age at death, maternal race and Hispanic origin, maternal age, gestational age, leading causes of death, and maternal state of residence. Infant mortality trends are also presented by selected characteristics. In the linked file, information from the death certificate is linked to information from the birth certificate for each infant younger than age 1 year who died in the 50 states, the District of Columbia, Puerto Rico, or Guam during 2024 (1). The purpose of the linkage is to use variables available from the birth certificate to conduct more detailed analyses of infant mortality patterns (2,3). The linked birth/infant death data set is also the preferred source for examining infant mortality by race and Hispanic origin. Infant mortality rates by race and Hispanic origin, based on maternal race and Hispanic origin, are more accurately measured from the birth certificate than the death certificate.

For 2024, linked birth/infant death data are not available for American Samoa, Commonwealth of the Northern Mariana Islands, and U.S. Virgin Islands. Some rates calculated from the mortality file differ from those published using the linked file. More details can be found elsewhere (1).

Methods

Data shown in this report are based on birth and infant death certificates registered in all states, the District of Columbia, Puerto Rico, and Guam. As part of the Vital Statistics Cooperative Program, each state provides to the National Center for Health Statistics matching birth and death certificate numbers for each infant younger than age 1 year who died during 2024. Further discussion of the process of linking births and deaths occurring in different states and file production can be found in the Methodology section of the “User Guide to the

2024 Period/2023 Cohort Linked Birth/Infant Death Public Use File” (1).

The period linked file for 2017 marked the first data year for which the linked birth data for infant deaths for all 50 states and the District of Columbia were based on the 2003 revision of the U.S. Standard Certificate of Live Birth (4) and the first year for which national data on race and Hispanic-origin categories based on 1997 Office of Management and Budget standards became available (5).

In 2024, 98.8% of all infant death records were successfully linked to their corresponding birth records. These records were weighted to adjust for the 1.2% of infant death records that were not linked to their corresponding birth certificates (1) (Technical Notes).

Information for age and race of mother is imputed if it is not reported on the birth certificate. In 2024, race of mother was imputed for 8.4% of births (2,3). Mother’s age was imputed for 0.02% of births (2,3).

All race and Hispanic-origin data are based on single-race reporting and are consistent with the 1997 Office of Management and Budget standards and differ from the bridged-race categories shown in previous reports (5). Maternal race and Hispanic-origin categories presented are American Indian and Alaska Native non-Hispanic (subsequently, American Indian and Alaska Native), Asian non-Hispanic (subsequently, Asian), Black non-Hispanic (subsequently, Black), Native Hawaiian or Other Pacific Islander non-Hispanic (subsequently, Native Hawaiian or Other Pacific Islander), White non-Hispanic (subsequently, White), and Hispanic. Race and Hispanic origin are reported separately on the birth certificate. Data are shown in most cases for five specified Hispanic groups: Central and South American, Cuban, Dominican, Mexican, and Puerto Rican. Additional details on Hispanic origin are available elsewhere (3). Comparisons between 2024 and 2023 by race and Hispanic origin are made in this report. The 2003 revision of the U.S. Standard Certificate of Live Birth allows the reporting of five race categories for each parent (6)—either alone, as in single race, or in combination, as in more than one race or multiple races—in accordance with the 1997 revised Office of Management and Budget standards (5). Further details on race reporting are available elsewhere (3).

Cause-of-death statistics are classified in accordance with the *International Statistical Classification of Diseases and Related Health Problems, 10th Revision (ICD–10)* (1,7) (Technical Notes).

Data by maternal and infant characteristics

This report presents descriptive tabulations of infant mortality data by a variety of maternal and infant characteristics. These tabulations are useful for understanding the basic relationships between risk factors and infant mortality, unadjusted for the possible effects of other variables. This report also presents several key risk factors for infant mortality: age at death, maternal race and Hispanic origin, maternal age, gestational age, leading causes of infant death, and maternal state of residence. For brevity, additional selected risk factors (sex, birthweight, plurality, and nativity [mother’s place of

birth]) are presented in tables but are not discussed in this report.

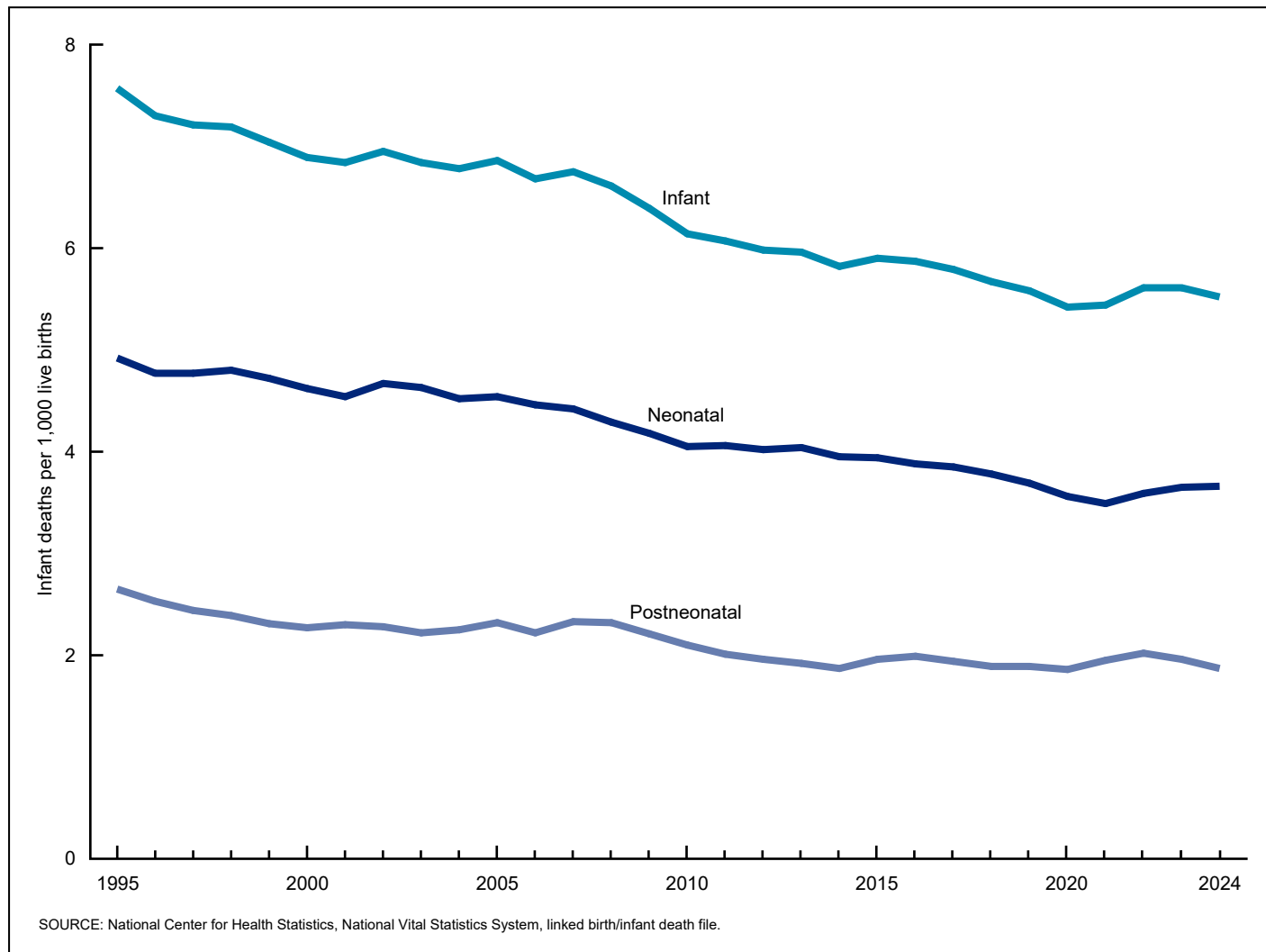
Race and Hispanic origin—Infant mortality rates are presented by race and Hispanic origin of the mother. The linked file is useful for computing accurate infant mortality rates by these characteristics because the race and Hispanic origin of the mother from the birth certificate are used in both the numerator and denominator of the infant mortality rate. In contrast, for rates based on the vital statistics mortality file, race information for the denominator is the race of the mother as reported on the birth certificate, while race information for the numerator is the race of the decedent as reported on the death certificate (2,3,8). More detail on the reliability of race and Hispanic-origin data from the linked file compared with the mortality file is available elsewhere (8).

Statistical significance—Statements in the text have been tested for statistical significance, and a statement that a given infant mortality rate is higher or lower than another rate indicates that the rates are significantly different using a two-tailed z test at the alpha level of 0.05. Comparisons between state rates and the U.S. rate take into account each state’s contribution to the U.S. rate. As a result, each state rate is compared with a unique U.S. rate independent of the state’s contribution to the total U.S. rate. Information on the methods used to test for statistical significance and suppression standards, as well as information on differences between period and cohort data, the weighting of the linked file, state linkages of infant deaths with their corresponding birth certificates, maternal age, period of gestation, birthweight, and cause-of-death classification is also available (1) (Technical Notes).

Results

Trends in infant mortality and infant age at death

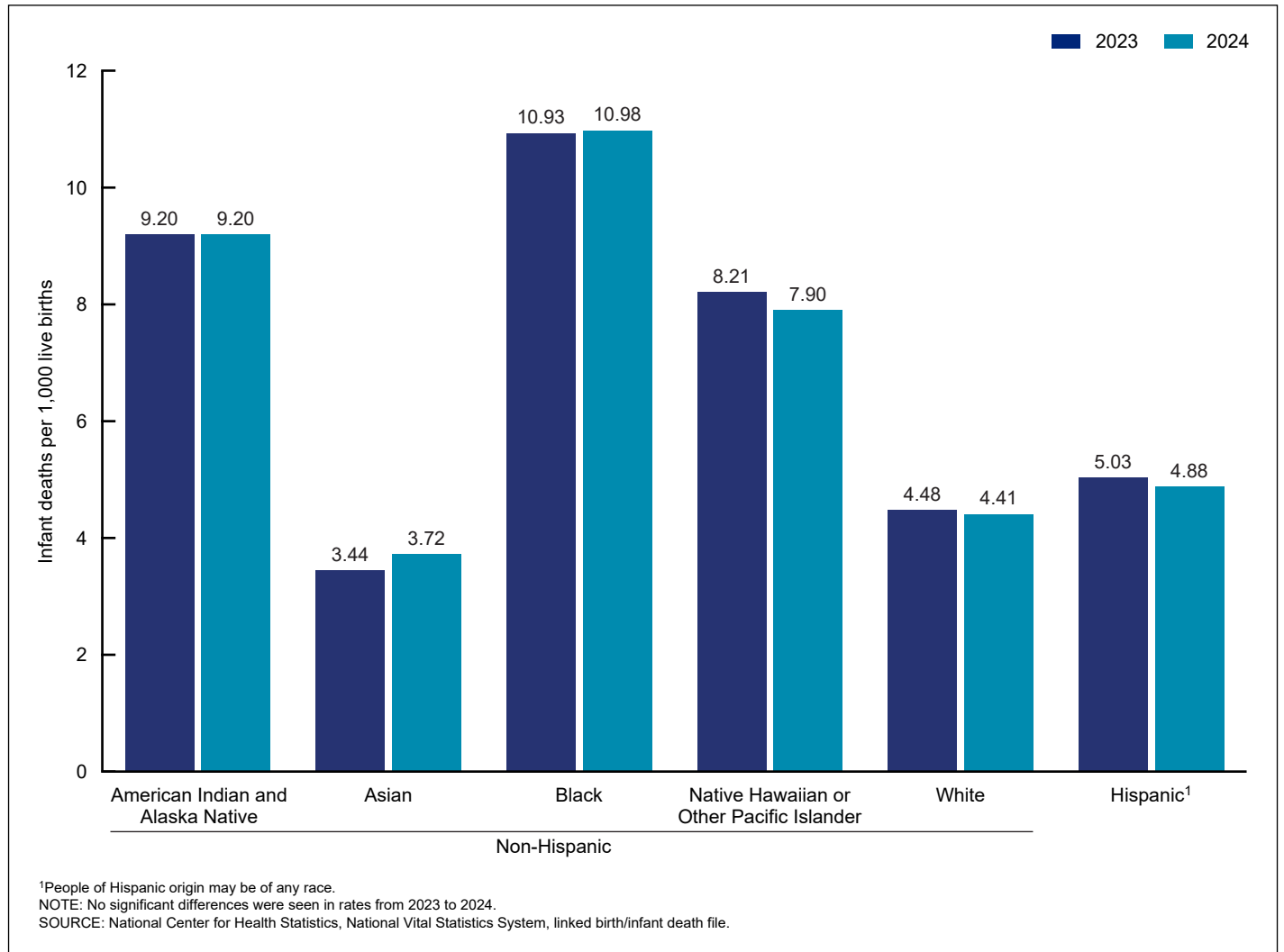
- In 2024, 20,048 infant deaths were reported in the United States, which was not significantly different from 2023 (20,162) (Figure 1, Table 1). The infant mortality rate was 5.52 deaths per 1,000 live births in 2024 and was not significantly different from the 2023 rate (5.61). The increase in the rate from 2021 (5.44) to 2022 (5.61) was the first increase since 2001 (6.84) to 2002 (6.95).
- The U.S. infant mortality rate has generally trended downward since 1995 (the first year that the period linked birth/infant death file was available) and is down 21% since 2002.
- The 2024 neonatal mortality rate (infant deaths at less than 28 days) of 3.66 was not significantly different from the rate in 2023 (3.65). The increase in the rate from 2021 (3.49) to 2022 (3.59) was the first since the increase from 2001 (4.54) to 2002 (4.67). The neonatal mortality rate has generally declined since 1995 and has decreased 22% since the last increase in 2002.
- The 2024 postneonatal mortality rate (infant deaths at 28 days or more) declined 4.6% to 1.87 from 1.96 in 2023.

Figure 1. Infant, neonatal, and postneonatal mortality rates: United States, 1995–2024

The rate increased from 2021 (1.95) to 2022 (2.02). The postneonatal mortality rate has also generally declined since 1995 and has decreased 18% since 2002 (2.28).

Race and Hispanic origin

- Mortality rates did not change significantly from 2023 to 2024 for infants of women of any of the race and Hispanic-origin groups: American Indian and Alaska Native (9.20 infant deaths per 1,000 live births in both 2023 and 2024), Asian (3.44 to 3.72), Black (10.93 to 10.98), Native Hawaiian or Other Pacific Islander (8.21 to 7.90), White (4.48 to 4.41), and Hispanic (5.03 to 4.88) (Tables 1 and 2, Figure 2).
- Mortality rates did not change significantly from 2023 to 2024 for infants of women in Hispanic-origin subgroups: Central and South American (4.59 to 4.48), Cuban (3.77 to 4.21), Dominican (4.59 to 4.94), Mexican (5.12 to 4.85), and Puerto Rican (6.43 to 6.24).
- In 2024, infant mortality continued to vary by race: Infants of Black women had the highest mortality rate (10.98), followed by infants of American Indian and Alaska Native and Native Hawaiian or Other Pacific Islander (9.20 and 7.90, respectively), Hispanic (4.88), White (4.41), and Asian (3.72) women.
- Infants of Black women had a higher neonatal mortality rate in 2024 (6.82) than infants of American Indian and Alaska Native (5.33), Native Hawaiian or Other Pacific Islander (3.76), Hispanic (3.43), White (2.90), and Asian (2.81) women (Table 2).
- In 2024, postneonatal mortality rates were higher for infants of Black (4.16), Native Hawaiian or Other Pacific Islander (4.05), and American Indian and Alaska Native (3.87) women than for infants of White (1.51), Hispanic (1.45), and Asian (0.91) women.
- Among Hispanic-origin subgroups in 2024, the mortality rate for infants of Puerto Rican women (6.24) was higher than rates for infants of Dominican (4.94), Mexican (4.85), Central and South American (4.48), and Cuban (4.21) women.

Figure 2. Infant mortality rate, by maternal race and Hispanic origin: United States, 2023 and 2024

Maternal age

- From 2023 to 2024, the mortality rate declined for infants of women ages 20–24, from 7.23 infant deaths per 1,000 live births to 6.89 (Figure 3, Table 2).
- Mortality rates did not change significantly from 2023 to 2024 for infants of females younger than 15 (20.95 to 18.53), 15–19 (10.44 to 9.78), 25–29 (5.24 to 5.22), 30–34 (4.59 to 4.65), 35–39 (4.94 to 4.90), and 40 and older (6.77 to 6.96).
- In 2024, mortality rates were highest for infants of females younger than 15 (18.53), decreased to a low of 4.65 for infants of women ages 30–34, and then increased to 6.96 for infants of women 40 and older.

Gestational age

- The mortality rate declined for infants born at 39–40 weeks (1.64 infant deaths per 1,000 live births to 1.55) but did not change significantly for the other gestational age categories from 2023 to 2024: preterm (less than 37 weeks of gestation) (34.74 to 34.49), early preterm (less than

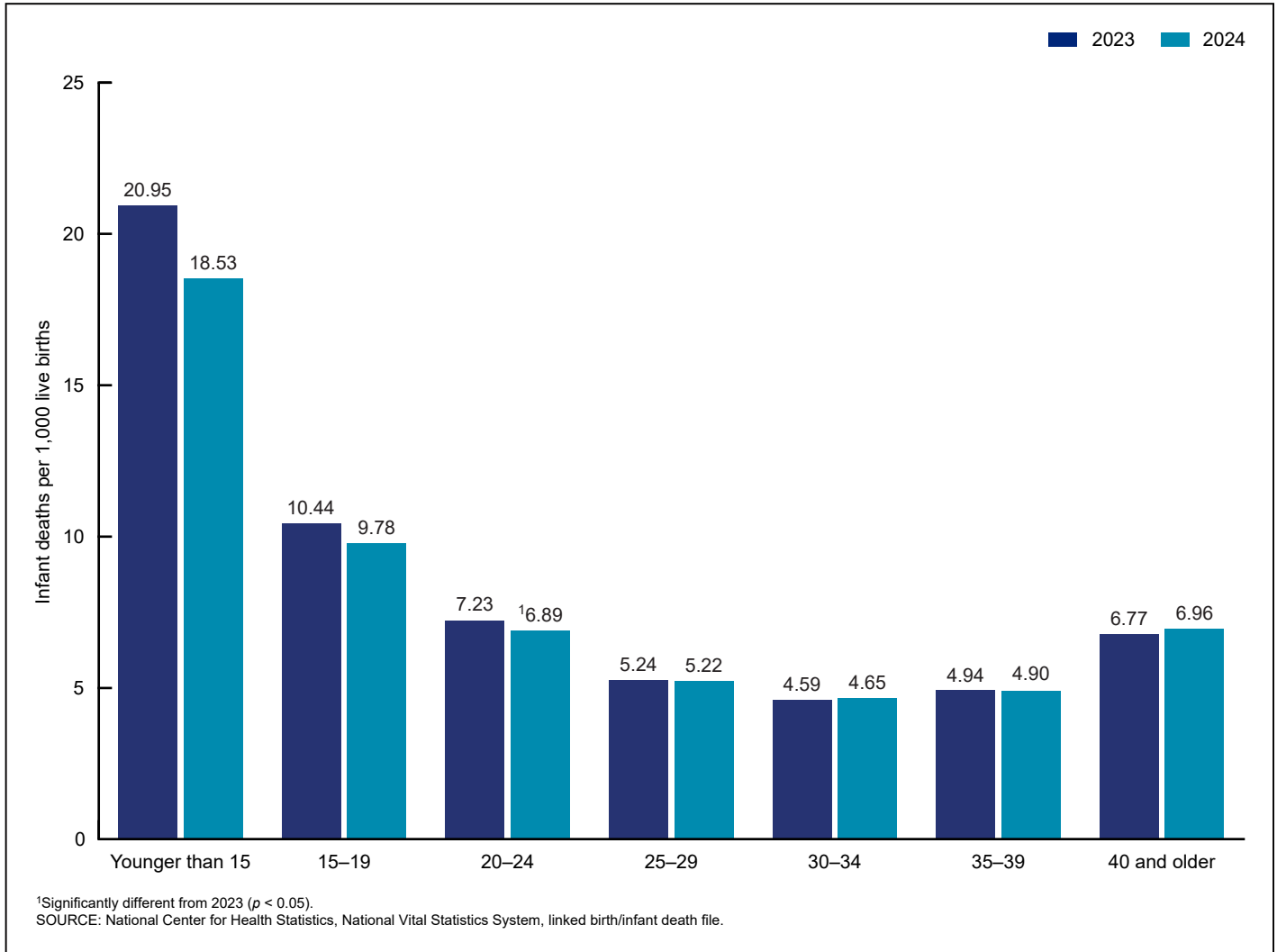
34 weeks of gestation) (107.87 to 108.14), late preterm (34–36 weeks) (8.31 to 8.41), term (37–41 weeks) (2.16 to 2.09), or post-term (42 weeks or more) (3.66 to 4.27) (Table, Table 2).

- In 2024, about two-thirds of all infant deaths (66%) occurred among infants born preterm (less than 37 weeks of gestation), which was essentially unchanged from 2023 (65%).

Leading causes of infant death

- In 2024, the five leading causes of all infant deaths were the same as those in 2023: congenital malformations (20.4% of infant deaths), disorders related to short gestation and low birth weight (14.6%), sudden infant death syndrome (SIDS) (6.7%), unintentional injuries (6.2%), and maternal complications (6.0%) (Table 3).
- From 2023 to 2024, the infant mortality rate for SIDS declined (from 40.2 infant deaths per 100,000 live births to 37.2). Infant mortality rates for congenital malformations (112.1 to 112.7), disorders related to short gestation and low birth weight (81.4 to 81.2), unintentional injuries (35.8

Figure 3. Infant mortality rate, by maternal age: United States, 2023 and 2024



to 34.0), and maternal complications (31.9 to 33.0) did not change significantly.

- Congenital malformations was the leading cause of death for infants of women in most race and Hispanic-origin groups: American Indian and Alaska Native (166.5), Asian (66.1), Native Hawaiian or Other Pacific Islander (154.2), White (100.7), and Hispanic (123.5) in 2024 (Table 4).
- In 2024, disorders related to short gestation and low birth weight was the leading cause of death for infants of Black women (202.4).

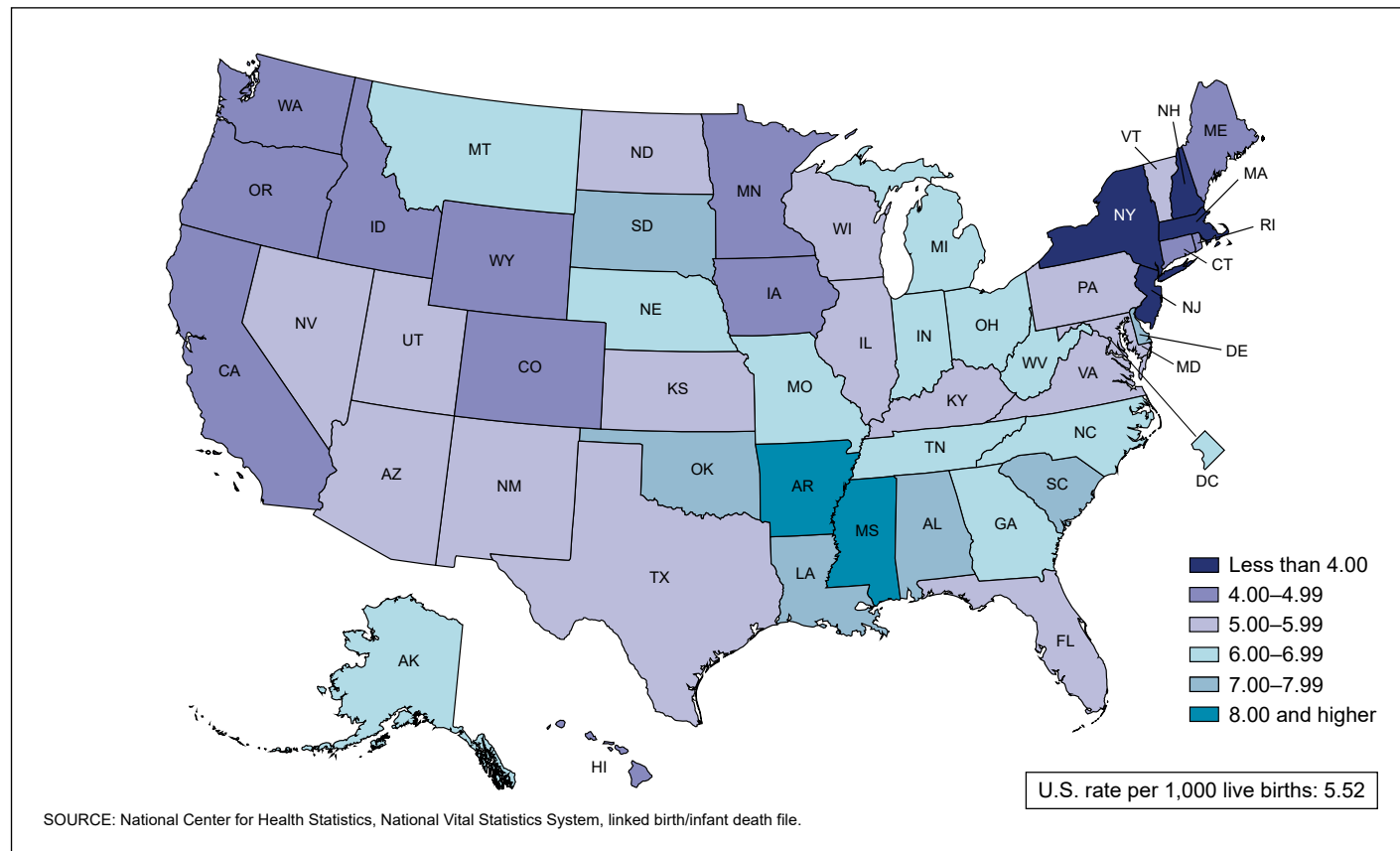
Infant mortality by state

- Infant mortality ranged from a low of 2.97 infant deaths per 1,000 births in New Hampshire to a high of 9.65 in Mississippi (Figure 4, Table 5).
- Ten states had infant mortality rates significantly lower than the U.S. infant mortality rate: California, Colorado, Connecticut, Iowa, Massachusetts, Minnesota, New Hampshire, New Jersey, New York, and Washington.

Table. Infant mortality rate, by gestational age: United States, 2015-2024

Year	Less than 32 weeks	32-33 weeks	34-36 weeks	37-41 weeks	42 weeks or more
Deaths per 1,000 live births					
2024.....	176.14	20.04	8.41	2.09	4.27
2023.....	174.28	21.04	8.31	2.16	3.66
2022.....	175.18	21.05	8.29	2.18	4.23
2021.....	167.39	19.35	8.11	2.08	3.79
2020.....	175.88	20.11	7.92	2.04	4.17
2019.....	180.40	19.21	8.21	2.03	5.72
2018.....	185.79	21.95	8.21	2.05	5.39
2017.....	187.56	20.50	8.50	2.10	3.98
2016.....	190.15	20.12	8.65	2.19	4.31
2015.....	193.54	20.79	8.76	2.17	4.20

SOURCE: National Center for Health Statistics, National Vital Statistics System, linked birth/infant death file.

Figure 4. Infant mortality rate, by state: United States, 2024

- Sixteen states had infant mortality rates significantly higher than the U.S. infant mortality rate: Alabama, Arkansas, Delaware, Georgia, Indiana, Louisiana, Michigan, Mississippi, Missouri, Nebraska, North Carolina, Ohio, Oklahoma, South Carolina, South Dakota, and Tennessee.

References

1. National Center for Health Statistics. User guide to the 2024 period/2023 cohort linked birth/infant death public use file. 2026. Available from: https://ftp.cdc.gov/pub/Health_Statistics/NCHS/Dataset_Documentation/DVS/period-cohort-linked/24PE23CO_linkedUG.pdf.
2. Osterman MJK, Hamilton BE, Martin JA, Driscoll AK, Valenzuela CP. Births: Final data for 2024. *Natl Vital Stat Rep*. 2026 Jun;75(2):1–48. DOI: <https://dx.doi.org/10.15620/cdc/252440>.
3. National Center for Health Statistics. User guide to the 2024 natality public use file. 2025. Available from: https://ftp.cdc.gov/pub/Health_Statistics/NCHS/Dataset_Documentation/DVS/natality/UserGuide2024.pdf.
4. Ely DM, Driscoll AK. Infant mortality in the United States, 2017: Data from the period linked birth/infant death file. *Natl Vital Stat Rep*. 2019 Aug;68(10):1–20. PMID: 32501205.
5. Office of Management and Budget. Revisions to the standards for the classification of federal data on race and ethnicity. *Fed Regist* 62(210):58782–90. 1997.
6. National Center for Health Statistics. 2003 revisions of the U.S. Standard Certificates and Reports. 2003. Available from: https://www.cdc.gov/nchs/nvss/vital_certificate_revisions.htm.
7. World Health Organization. International statistical classification of diseases and related health problems, 10th Revision. Volume 2, Instruction manual. 2010 ed. Geneva: World Health Organization; 2010.
8. Kochanek KD, Murphy SL, Xu J, Arias E. Deaths: Final data for 2017. *Natl Vital Stat Rep*. 2019 Jun;68(9):1–77. PMID: 32501199.
9. National Center for Health Statistics. U.S. Standard Certificate of Live Birth. 2003. Available from: <https://www.cdc.gov/nchs/data/dvs/birth11-03final-ACC.pdf>.
10. National Center for Health Statistics. Vital statistics online data portal. Mortality data files. Available from: https://www.cdc.gov/nchs/data_access/VitalStatsOnline.htm.
11. Martin JA, Osterman MJ, Kirmeyer SE, Gregory EC. Measuring gestational age in vital statistics data: Transitioning to the obstetric estimate. *Natl Vital Stat Rep*. 2015 Jun;64(5):1–20. PMID: 26047089.
12. National Center for Health Statistics. Instructions for classifying the underlying cause of death, 2025. NCHS Instruction Manual, part 2a. 2025.
13. National Center for Health Statistics. Vital statistics ICD–10 ACME decision tables for classifying underlying causes of death, 2024. NCHS Instruction Manual, part 2c. 2024.
14. National Center for Health Statistics. Mortality multiple cause-of-death public use data file documentation (published annually). 2024.
15. World Health Organization. Manual of the International Statistical Classification of Diseases, Injuries and Causes of Death: Based on the recommendations of the Ninth Revision Conference, 1975, and adopted by the Twenty-ninth World Health Assembly, 1975 revision. Geneva, Switzerland. 1977.

16. National Center for Health Statistics. ICD–10 cause-of-death lists for tabulating mortality statistics. Updated October 2020. NCHS Instruction Manual, part 9. 2020.
17. Parker JD, Talih M, Irimata KE, Zhang G, Branum AM, Davis D, et al. National Center for Health Statistics data presentation standards for rates and counts. *Vital Health Stat 2*. 2023 Mar;(200):1–26. DOI: <https://dx.doi.org/10.15620/cdc:124368>.
18. Parker JD, Talih M, Malec DJ, Beresovsky V, Carroll M, Gonzalez JF Jr, et al. National Center for Health Statistics data presentation standards for proportions. *Vital Health Stat 2*. 2017 Aug;(175):1–22. PMID: 30248016.

List of Detailed Tables

1. Live births; infant, neonatal, and postneonatal deaths; and mortality rate: United States, 1995–2024, and by maternal race and Hispanic origin, 2017–2024	8
2. Infant mortality rate, live births, and infant deaths, by selected characteristics and maternal race and Hispanic origin: United States, 2024	11
3. Infant deaths, percentage of deaths, and infant mortality rate, by five leading causes of infant death: United States, 2010–2024.	16
4. Infant deaths and mortality rate for the five leading causes of infant death, by maternal race and Hispanic origin: United States, 2024	17
5. Infant mortality rate: United States and each state, 2024.	18

Table 1. Live births; infant, neonatal, and postneonatal deaths; and mortality rate: United States, 1995–2024, and by maternal race and Hispanic origin, 2017–2024

Race and Hispanic origin and year	Number				Deaths per 1,000 live births		
	Live births	Infant deaths	Neonatal deaths	Postneonatal deaths	Infant	Neonatal	Postneonatal
All race and Hispanic-origin groups							
2024.....	3,628,934	20,048	13,272	6,776	5.52	3.66	1.87
2023.....	3,596,017	20,162	13,113	7,049	5.61	3.65	1.96
2022.....	3,667,758	20,577	13,158	7,419	5.61	3.59	2.02
2021.....	3,664,292	19,928	12,797	7,131	5.44	3.49	1.95
2020.....	3,613,647	19,578	12,866	6,712	5.42	3.56	1.86
2019.....	3,747,540	20,927	13,834	7,093	5.58	3.69	1.89
2018.....	3,791,712	21,498	14,329	7,169	5.67	3.78	1.89
2017.....	3,855,500	22,341	14,844	7,497	5.79	3.85	1.94
2016.....	3,945,875	23,157	15,303	7,854	5.87	3.88	1.99
2015.....	3,978,497	23,458	15,672	7,786	5.90	3.94	1.96
2014.....	3,988,076	23,211	15,737	7,474	5.82	3.95	1.87
2013.....	3,932,181	23,446	15,893	7,553	5.96	4.04	1.92
2012.....	3,952,841	23,654	15,887	7,767	5.98	4.02	1.96
2011.....	3,953,590	24,001	16,065	7,936	6.07	4.06	2.01
2010.....	3,999,386	24,572	16,193	8,379	6.14	4.05	2.10
2009.....	4,130,665	26,408	17,261	9,148	6.39	4.18	2.21
2008.....	4,247,726	28,075	18,238	9,837	6.61	4.29	2.32
2007.....	4,316,233	29,153	19,094	10,059	6.75	4.42	2.33
2006.....	4,265,593	28,509	19,041	9,468	6.68	4.46	2.22
2005.....	4,138,573	28,384	18,782	9,602	6.86	4.54	2.32
2004.....	4,112,055	27,860	18,602	9,258	6.78	4.52	2.25
2003.....	4,090,007	27,995	18,935	9,060	6.84	4.63	2.22
2002.....	4,021,825	27,970	18,791	9,179	6.95	4.67	2.28
2001.....	4,026,036	27,523	18,275	9,248	6.84	4.54	2.30
2000.....	4,058,882	27,961	18,733	9,227	6.89	4.62	2.27
1999.....	3,959,417	27,865	18,701	9,164	7.04	4.72	2.31
1998.....	3,941,553	28,325	18,915	9,410	7.19	4.80	2.39
1997.....	3,880,894	27,968	18,507	9,461	7.21	4.77	2.44
1996.....	3,891,494	28,419	18,556	9,863	7.30	4.77	2.53
1995.....	3,899,589	29,505	19,186	10,319	7.57	4.92	2.65
Non-Hispanic, single-race							
American Indian and Alaska Native:							
2024.....	24,021	221	128	93	9.20	5.33	3.87
2023.....	24,571	226	117	108	9.20	4.76	4.40
2022.....	25,721	233	135	98	9.06	5.25	3.81
2021.....	26,124	195	100	96	7.46	3.83	3.67
2020.....	26,813	206	102	104	7.68	3.80	3.88
2019.....	28,450	224	114	110	7.87	4.01	3.87
2018.....	29,092	237	120	117	8.15	4.12	4.02
2017.....	29,957	276	143	132	9.21	4.77	4.41
Asian:							
2024.....	226,860	843	637	206	3.72	2.81	0.91
2023.....	215,738	742	542	199	3.44	2.51	0.92
2022.....	218,994	768	542	225	3.51	2.47	1.03
2021.....	213,813	788	594	193	3.69	2.78	0.90
2020.....	219,068	688	503	185	3.14	2.30	0.84
2019.....	238,769	806	602	204	3.38	2.52	0.85
2018.....	240,798	874	643	231	3.63	2.67	0.96
2017.....	249,250	943	675	268	3.78	2.71	1.08
Black:							
2024.....	473,377	5,199	3,230	1,968	10.98	6.82	4.16
2023.....	491,494	5,374	3,260	2,114	10.93	6.63	4.30
2022.....	511,439	5,573	3,296	2,277	10.90	6.44	4.45
2021.....	517,889	5,463	3,291	2,172	10.55	6.35	4.19
2020.....	529,811	5,501	3,472	2,028	10.38	6.55	3.83
2019.....	548,075	5,821	3,754	2,067	10.62	6.85	3.77
2018.....	552,029	5,933	3,897	2,037	10.75	7.06	3.69
2017.....	560,715	6,152	4,012	2,140	10.97	7.16	3.82

Table 1. Live births; infant, neonatal, and postneonatal deaths; and mortality rate: United States, 1995–2024, and by maternal race and Hispanic origin, 2017–2024—Con.

Race and Hispanic origin and year	Number				Deaths per 1,000 live births		
	Live births	Infant deaths	Neonatal deaths	Postneonatal deaths	Infant	Neonatal	Postneonatal
Non-Hispanic, single race—Con.							
Native Hawaiian or Other Pacific Islander:							
2024.....	10,375	82	39	42	7.90	3.76	4.05
2023.....	10,115	83	50	33	8.21	4.94	3.26
2022.....	10,122	86	48	38	8.50	4.74	3.75
2021.....	9,531	74	41	32	7.76	4.30	3.36
2020.....	9,626	69	41	27	7.17	4.26	2.80
2019.....	9,770	80	49	31	8.19	5.02	3.17
2018.....	9,476	89	51	38	9.39	5.38	4.01
2017.....	9,426	72	36	36	7.64	3.82	3.82
White:							
2024.....	1,783,156	7,870	5,179	2,692	4.41	2.90	1.51
2023.....	1,787,051	8,008	5,127	2,881	4.48	2.87	1.61
2022.....	1,840,739	8,324	5,318	3,006	4.52	2.89	1.63
2021.....	1,887,656	8,236	5,251	2,984	4.36	2.78	1.58
2020.....	1,843,432	8,115	5,290	2,825	4.40	2.87	1.53
2019.....	1,915,912	8,603	5,589	3,014	4.49	2.92	1.57
2018.....	1,956,413	9,059	5,873	3,186	4.63	3.00	1.63
2017.....	1,992,461	9,306	6,061	3,246	4.67	3.04	1.63
Hispanic							
2024.....	984,092	4,804	3,376	1,428	4.88	3.43	1.45
2023.....	945,200	4,750	3,356	1,394	5.03	3.55	1.47
2022.....	937,421	4,581	3,138	1,442	4.89	3.35	1.54
2021.....	885,916	4,246	2,899	1,347	4.79	3.27	1.52
2020.....	866,713	4,063	2,828	1,235	4.69	3.26	1.42
2019.....	886,467	4,462	3,091	1,371	5.03	3.49	1.55
2018.....	886,210	4,303	3,036	1,267	4.86	3.43	1.43
2017.....	898,764	4,583	3,198	1,383	5.10	3.56	1.54
Central and South American:							
2024.....	231,723	1,038	739	299	4.48	3.19	1.29
2023.....	208,618	958	697	261	4.59	3.34	1.25
2022.....	207,843	907	652	255	4.36	3.14	1.23
2021.....	178,067	748	521	227	4.20	2.93	1.27
2020.....	169,811	659	470	189	3.88	2.77	1.11
2019.....	165,229	749	535	214	4.53	3.24	1.30
2018.....	147,430	592	438	154	4.02	2.97	1.04
2017.....	145,614	653	465	188	4.48	3.19	1.29
Cuban:							
2024.....	32,315	136	96	40	4.21	2.97	1.24
2023.....	30,001	113	86	27	3.77	2.87	0.90
2022.....	26,390	104	65	39	3.94	2.46	1.48
2021.....	24,437	87	68	19	3.56	2.78	*
2020.....	23,188	98	63	34	4.23	2.72	1.47
2019.....	23,668	98	65	33	4.14	2.75	1.39
2018.....	23,471	90	64	26	3.83	2.73	1.11
2017.....	23,362	93	69	24	3.98	2.95	1.03
Dominican:							
2024.....	34,221	169	111	57	4.94	3.24	1.67
2023.....	33,575	154	106	48	4.59	3.16	1.43
2022.....	33,531	159	112	46	4.74	3.34	1.37
2021.....	33,373	109	68	41	3.27	2.04	1.23
2020.....	31,596	143	101	42	4.53	3.20	1.33
2019.....	32,483	153	111	42	4.71	3.42	1.29

Table 1. Live births; infant, neonatal, and postneonatal deaths; and mortality rate: United States, 1995–2024, and by maternal race and Hispanic origin, 2017–2024—Con.

Race and Hispanic origin and year	Number				Deaths per 1,000 live births		
	Live births	Infant deaths	Neonatal deaths	Postneonatal deaths	Infant	Neonatal	Postneonatal
Hispanic—Con.							
Mexican:							
2024	521,149	2,529	1,795	734	4.85	3.44	1.41
2023	508,127	2,601	1,845	757	5.12	3.63	1.49
2022	510,194	2,442	1,688	754	4.79	3.31	1.48
2021	485,127	2,380	1,633	747	4.91	3.37	1.54
2020	480,531	2,264	1,586	678	4.71	3.30	1.41
2019	496,716	2,462	1,693	769	4.96	3.41	1.55
2018	495,831	2,426	1,690	736	4.89	3.41	1.48
2017	512,126	2,588	1,795	792	5.05	3.50	1.55
Puerto Rican:							
2024	65,515	409	266	144	6.24	4.06	2.20
2023	66,203	426	282	144	6.43	4.26	2.18
2022	69,266	438	267	171	6.32	3.85	2.47
2021	70,729	428	278	151	6.05	3.93	2.13
2020	69,763	437	308	129	6.26	4.41	1.85
2019	70,950	438	294	144	6.17	4.14	2.03
2018	71,614	402	290	112	5.61	4.05	1.56
2017	70,813	459	307	151	6.48	4.34	2.13

* Estimate does not meet National Center for Health Statistics standards of reliability.

NOTES: Infant deaths are weighted to adjust for the 1.2% of infant death records not linked to their corresponding birth certificates. The neonatal and postneonatal mortality rates combined may not exactly add to totals due to rounding. People of Hispanic origin may be of any race. Data for infants of Dominican women are available starting with the 2019 period linked birth/infant death data files.

SOURCE: National Center for Health Statistics, National Vital Statistics System, linked birth/infant death file.

Table 2. Infant mortality rate, live births, and infant deaths, by selected characteristics and maternal race and Hispanic origin: United States, 2024

Characteristic	Non-Hispanic						Hispanic					
	Total	American Indian and Alaska Native ¹	Asian	Black	Native Hawaiian or Other Pacific Islander	White	Total ²	Central and South American	Cuban	Dominican	Mexican	Puerto Rican
	Infant deaths per 1,000 live births in specified group											
Total	5.52	9.20	3.72	10.98	7.90	4.41	4.88	4.48	4.21	4.94	4.85	6.24
Age at death (days)												
Total neonatal	3.66	5.33	2.81	6.82	3.76	2.90	3.43	3.19	2.97	3.24	3.44	4.06
Early neonatal (less than 7)	2.87	3.79	2.22	5.31	2.80	2.27	2.72	2.48	2.17	2.60	2.72	3.30
Late neonatal (7–27)	0.79	1.50	0.59	1.51	0.96	0.64	0.71	0.72	0.80	0.64	0.72	0.75
Postneonatal (28–364)	1.87	3.87	0.91	4.16	4.05	1.51	1.45	1.29	1.24	1.67	1.41	2.20
Sex												
Male	5.88	11.05	3.85	11.78	9.23	4.73	5.10	4.64	4.48	4.77	5.02	6.98
Female	5.15	7.23	3.59	10.15	6.31	4.08	4.65	4.32	3.92	5.11	4.68	5.51
Period of gestation (weeks)												
Less than 37	34.49	41.58	28.70	50.68	37.72	28.22	32.83	31.46	30.42	34.01	33.01	35.76
Less than 34	108.14	114.53	96.88	131.67	103.06	93.28	107.37	105.12	97.04	98.69	109.58	113.41
Less than 28	368.75	383.72	357.26	366.01	376.62	371.48	355.88	350.88	306.60	322.58	359.45	385.66
28–31	42.78	62.99	28.68	43.55	*	43.87	41.15	48.17	44.44	*	40.68	32.56
32–33	20.04	28.50	14.60	24.38	*	18.01	19.70	16.74	*	*	22.01	11.53
34–36	8.41	14.43	5.79	11.48	12.77	7.86	7.39	7.42	5.35	8.97	7.26	7.39
37–41	2.09	4.45	1.15	3.94	3.54	1.86	1.72	1.61	1.38	1.53	1.69	2.34
37–38	3.13	6.53	1.68	5.15	4.50	2.90	2.56	2.27	2.81	2.52	2.49	3.54
39–40	1.55	3.07	0.85	3.13	3.05	1.36	1.26	1.26	0.70	0.89	1.27	1.65
41	1.67	*	*	3.08	*	1.55	1.45	1.39	*	*	1.33	*
42 or more	4.27	*	*	*	*	3.65	6.70	*	*	*	*	*
Birthweight (grams)												
Less than 2,500	42.40	54.13	28.50	50.95	45.69	38.18	42.70	42.52	42.54	38.40	43.33	42.77
Less than 1,500	200.13	220.67	173.05	206.82	195.27	191.23	202.29	195.95	188.26	171.70	207.13	211.34
1,500–2,499	12.74	21.41	7.39	13.93	14.71	12.63	12.56	13.71	11.84	10.33	12.56	11.56
2,500 or more	2.03	4.67	1.05	3.79	3.83	1.84	1.63	1.46	1.17	1.64	1.64	2.09
2,500–4,499	2.03	4.60	1.05	3.78	3.79	1.84	1.62	1.46	1.18	1.65	1.63	2.11
4,500 or more	2.34	*	*	4.75	*	2.01	2.10	*	*	*	2.99	*
Plurality												
Single births	5.04	8.73	3.36	9.87	7.41	4.05	4.51	4.13	3.85	4.70	4.50	5.79
Twin births	20.09	25.48	17.00	34.87	*	14.75	19.11	20.51	14.12	10.61	18.74	17.65
Triplet and higher-order births	56.03	*	*	68.97	*	44.48	70.10	*	*	*	48.58	*

See footnotes at end of table.

**Table 2. Infant mortality rate, live births, and infant deaths, by selected characteristics and maternal race and Hispanic origin: United States, 2024—
Con.**

Characteristic	Non-Hispanic						Hispanic					
	Total	American Indian and Alaska Native ¹	Asian	Black	Native Hawaiian or Other Pacific Islander	White	Total ²	Central and South American	Cuban	Dominican	Mexican	Puerto Rican
Infant deaths per 1,000 live births in specified group—Con.												
Age of mother												
Younger than 15.....	18.53	*	*	25.86	*	*	12.74	*	*	*	*	*
15–19.....	9.78	9.61	*	14.67	*	9.72	7.26	5.35	*	*	7.73	12.11
20–24.....	6.89	8.96	6.36	12.81	8.92	5.98	5.06	4.46	5.07	5.02	4.87	6.70
25–29.....	5.22	8.08	4.14	10.48	8.51	4.17	4.46	3.97	3.39	6.13	4.41	6.02
30–34.....	4.65	9.00	3.22	9.61	7.67	3.71	4.44	4.27	3.96	3.63	4.44	5.77
35–39.....	4.90	9.44	3.49	10.09	*	3.88	4.60	4.47	4.51	4.22	4.62	4.33
40–54.....	6.96	21.77	4.60	12.05	*	5.39	7.21	7.20	*	7.43	7.30	6.35
Mother's place of birth												
50 states or District of Columbia.....	5.71	9.28	3.87	11.62	8.93	4.43	5.17	4.82	5.27	5.19	4.95	6.15
Elsewhere.....	4.67	*	3.62	7.97	6.81	3.74	4.54	4.41	3.69	4.77	4.64	6.30
Live births												
Total.....	3,628,934	24,021	226,860	473,377	10,375	1,783,156	984,092	231,723	32,315	34,221	521,149	65,515
Sex												
Male.....	1,853,969	12,399	116,716	240,537	5,306	913,082	501,012	117,738	16,506	17,383	265,526	33,381
Female.....	1,774,965	11,622	110,144	232,840	5,069	870,074	483,080	113,985	15,809	16,838	255,623	32,134
Period of gestation (weeks)												
Less than 37.....	377,204	3,030	20,764	70,231	1,299	168,964	98,970	21,998	3,090	3,558	52,072	7,579
Less than 34.....	98,629	812	5,223	22,913	359	40,278	25,175	5,413	845	993	13,104	2,028
Less than 28.....	22,774	172	1,184	6,773	77	7,602	6,016	1,254	212	248	3,152	516
28–31.....	32,893	254	1,778	7,485	111	13,358	8,602	1,889	270	353	4,499	645
32–33.....	42,962	386	2,261	8,655	171	19,318	10,557	2,270	363	392	5,453	867
34–36.....	278,575	2,218	15,541	47,318	940	128,686	73,795	16,585	2,245	2,565	38,968	5,551
37–41.....	3,238,129	20,878	205,810	401,430	9,031	1,606,388	882,739	209,009	29,055	30,626	468,049	57,793
37–38.....	1,096,713	7,960	72,673	160,042	3,332	512,225	303,261	70,149	9,240	10,337	161,602	20,639
39–40.....	1,979,343	12,069	126,204	225,481	5,238	1,002,564	539,534	128,806	18,630	19,018	285,443	34,631
41.....	162,073	849	6,933	15,907	461	91,599	39,944	10,054	1,185	1,271	21,004	2,523
42 or more.....	9,144	61	139	995	26	6,021	1,492	377	40	28	812	86
Not stated.....	4,457	52	147	721	19	1,783	891	339	130	*	216	57
Birthweight (grams)												
Less than 2,500.....	310,080	2,180	21,717	71,339	985	124,490	77,447	16,886	2,351	3,047	39,927	6,663
Less than 1,500.....	49,074	358	2,768	13,693	169	17,811	12,304	2,664	409	530	6,315	1,041
1,500–2,499.....	261,006	1,822	18,949	57,646	816	106,679	65,143	14,222	1,942	2,517	33,612	5,622
2,500 or more.....	3,317,928	21,838	205,129	401,968	9,390	1,658,442	906,585	214,819	29,963	31,171	481,203	58,844
2,500–4,499.....	3,285,410	21,511	204,262	399,441	9,247	1,638,565	898,983	213,258	29,638	30,952	476,850	58,415
4,500 or more.....	32,518	327	867	2,527	143	19,877	7,602	1,561	325	219	4,353	429
Not stated.....	926	*	14	70	–	224	60	18	*	*	19	*

See footnotes at end of table.

**Table 2. Infant mortality rate, live births, and infant deaths, by selected characteristics and maternal race and Hispanic origin: United States, 2024—
Con.**

Characteristic	Non-Hispanic						Hispanic					
	Total	American Indian and Alaska Native ¹	Asian	Black	Native Hawaiian or Other Pacific Islander	White	Total ²	Central and South American	Cuban	Dominican	Mexican	Puerto Rican
Plurality												
Single births.....	3,517,151	23,373	221,449	452,981	10,118	1,726,015	960,531	227,036	31,439	33,158	508,894	63,416
Twin births.....	109,195	628	5,294	19,874	254	55,792	23,076	4,633	850	1,037	12,008	2,040
Triplet and higher-order births.....	2,588	20	117	522	*	1,349	485	54	26	26	247	59
Age of mother												
Younger than 15.....	1,727	30	11	464	*	341	785	286	—	14	385	39
15–19.....	137,273	1,769	888	26,450	453	43,508	57,700	14,755	687	1,129	31,581	3,632
20–24.....	611,800	6,029	9,126	96,149	2,467	257,486	216,365	48,431	5,327	6,377	120,247	14,777
25–29.....	990,817	6,807	41,742	124,237	3,055	497,706	283,198	63,951	9,154	9,462	153,597	19,104
30–34.....	1,112,409	5,776	93,782	128,145	2,607	593,646	253,011	58,786	10,105	9,931	131,226	17,144
35–39.....	622,517	2,967	64,989	75,600	1,391	320,734	136,132	35,103	5,760	5,692	66,436	8,772
40–54.....	152,391	643	16,322	22,332	398	69,735	36,901	10,411	1,282	1,616	17,677	2,047
Mother's place of birth												
50 states or District of Columbia.....	2,734,001	23,597	53,529	375,335	3,806	1,656,820	514,060	35,485	10,620	10,406	339,716	47,779
Elsewhere.....	887,378	378	172,744	96,280	6,463	123,815	468,825	195,987	21,676	23,702	181,014	17,619
Not stated.....	7,555	46	587	1,762	106	2,521	1,207	251	19	113	419	117
Total												
Total.....	20,048	221	843	5,199	82	7,870	4,804	1,038	136	169	2,529	409
Age at death (days)												
Total neonatal.....	13,272	128	637	3,230	39	5,179	3,376	739	96	111	1,795	266
Early neonatal (less than 7).....	10,410	91	503	2,515	29	4,040	2,679	574	70	89	1,419	216
Late neonatal (7–27).....	2,862	36	134	715	10	1,138	697	166	26	22	375	49
Postneonatal (28–364).....	6,776	93	206	1,968	42	2,692	1,428	299	40	57	734	144
Sex												
Male.....	10,909	137	449	2,834	49	4,317	2,557	546	74	83	1,333	233
Female.....	9,139	84	395	2,364	32	3,553	2,247	492	62	86	1,196	177

See footnotes at end of table.

**Table 2. Infant mortality rate, live births, and infant deaths, by selected characteristics and maternal race and Hispanic origin: United States, 2024—
Con.**

Characteristic	Non-Hispanic						Hispanic					
	Total	American Indian and Alaska Native ¹	Asian	Black	Native Hawaiian or Other Pacific Islander	White	Total ²	Central and South American	Cuban	Dominican	Mexican	Puerto Rican
Period of gestation (weeks)							Infant deaths—Con.					
Less than 37	13,009	126	596	3,559	49	4,768	3,249	692	94	121	1,719	271
Less than 34	10,666	93	506	3,017	37	3,757	2,703	569	82	98	1,436	230
Less than 28	8,398	66	423	2,479	29	2,824	2,141	440	65	80	1,133	199
28–31	1,407	16	51	326	*	586	354	91	12	*	183	21
32–33	861	11	33	211	*	348	208	38	*	*	120	10
34–36	2,344	32	90	543	12	1,011	545	123	12	23	283	41
37–41	6,779	93	237	1,580	32	2,993	1,514	336	40	47	792	135
37–38	3,435	52	122	825	15	1,485	776	159	26	26	402	73
39–40	3,073	37	107	706	16	1,367	680	162	13	17	362	57
41	271	*	*	49	*	142	58	14	*	*	28	*
42 or more	39	*	–	*	–	22	10	*	–	–	*	*
Not stated	220	*	10	56	–	87	32	*	*	–	11	*
Birthweight (grams)												
Less than 2,500	13,147	118	619	3,635	45	4,753	3,307	718	100	117	1,730	285
Less than 1,500	9,821	79	479	2,832	33	3,406	2,489	522	77	91	1,308	220
1,500–2,499	3,326	39	140	803	12	1,347	818	195	23	26	422	65
2,500 or more	6,741	102	216	1,523	36	3,057	1,474	313	35	51	791	123
2,500–4,499	6,665	99	214	1,511	35	3,017	1,457	312	35	51	778	123
4,500 or more	76	*	*	12	*	40	16	*	–	–	13	–
Not stated	161	*	*	40	–	61	23	*	*	–	*	*
Plurality												
Single births	17,709	204	745	4,469	75	6,987	4,329	938	121	156	2,292	367
Twin births	2,194	16	90	693	*	823	441	95	12	11	225	36
Triplet and higher-order births	145	–	*	36	–	60	34	*	*	*	12	*
Age of mother												
Younger than 15	32	*	*	12	–	*	10	*	–	–	*	*
15–19	1,343	17	*	388	–	423	419	79	*	*	244	44
20–24	4,216	54	58	1,232	22	1,539	1,095	216	27	32	586	99
25–29	5,174	55	173	1,302	26	2,077	1,263	254	31	58	678	115
30–34	5,172	52	302	1,231	20	2,204	1,124	251	40	36	583	99
35–39	3,050	28	227	763	*	1,246	626	157	26	24	307	38
40–54	1,061	14	75	269	*	376	266	75	*	12	129	13

See footnotes at end of table.

**Table 2. Infant mortality rate, live births, and infant deaths, by selected characteristics and maternal race and Hispanic origin: United States, 2024—
Con.**

Characteristic	Non-Hispanic						Hispanic					
	Total	American Indian and Alaska Native ¹	Asian	Black	Native Hawaiian or Other Pacific Islander	White	Total ²	Central and South American	Cuban	Dominican	Mexican	Puerto Rican
Mother's place of birth												
50 states or District of Columbia	15,622	219	207	4,361	34	7,342	2,657	171	56	54	1,683	294
Elsewhere	4,144	*	626	767	44	463	2,127	864	80	113	839	111
Not stated	282	*	10	71	*	66	20	*	—	*	*	*

* Estimate does not meet National Center for Health Statistics standards of reliability.

— Quantity zero.

¹Includes Aleut and Eskimo people.

²Includes other and unknown Hispanic origin not stated, not shown separately.

NOTES: Infant deaths are weighted so numbers may not exactly add to totals due to rounding. Not stated responses were included in totals but not distributed among groups for rate computations. Race and Hispanic origin are reported separately on birth certificates. Race categories are consistent with the 1997 Office of Management and Budget standards. People of Hispanic origin may be of any race.

SOURCE: National Center for Health Statistics, National Vital Statistics System, linked birth/infant death file.

Table 3. Infant deaths, percentage of deaths, and infant mortality rate, by five leading causes of infant death: United States, 2010–2024

Year	Congenital malformations (Q00–Q99)			Short gestation and low birth weight, not elsewhere classified (P07)			Sudden infant death syndrome (R95)			Accidents (unintentional injuries) (V01–X59)			Maternal complications of pregnancy (P01)		
	Number	Percent	Rate (deaths per 100,000 live births)	Number	Percent	Rate (deaths per 100,000 live births)	Number	Percent	Rate (deaths per 100,000 live births)	Number	Percent	Rate (deaths per 100,000 live births)	Number	Percent	Rate (deaths per 100,000 live births)
2024.....	4,091	20.4	112.7	2,945	14.6	81.2	1,350	6.7	37.2	1,235	6.2	34.0	1,199	6.0	33.0
2023.....	4,030	20.0	112.1	2,927	14.5	81.4	1,446	7.2	40.2	1,288	6.4	35.8	1,146	5.7	31.9
2022.....	4,004	19.5	109.2	2,884	14.0	78.6	1,531	7.4	41.7	1,351	6.6	36.8	1,213	5.9	33.1
2021.....	3,990	20.0	108.9	2,957	14.8	80.7	1,458	7.3	39.8	1,300	6.5	35.5	1,113	5.6	30.4
2020.....	4,047	20.7	112.0	3,152	16.1	87.2	1,386	7.1	38.4	1,192	6.1	33.0	1,115	5.7	30.9
2019.....	4,313	20.6	115.1	3,460	16.5	92.3	1,251	6.0	33.4	1,264	6.0	33.7	1,250	6.0	33.4
2018.....	4,501	20.9	118.7	3,683	17.1	97.1	1,331	6.2	35.1	1,169	5.4	30.8	1,371	6.4	36.2
2017.....	4,596	20.6	119.2	3,757	16.8	97.4	1,360	6.1	35.3	1,313	5.9	34.1	1,436	6.4	37.2
2016.....	4,823	20.8	122.2	3,926	17.0	99.5	1,498	6.5	38.0	1,217	5.3	30.8	1,407	6.1	35.7
2015.....	4,847	20.7	121.8	4,087	17.4	102.7	1,567	6.7	39.4	1,289	5.5	32.4	1,527	6.5	38.4
2014.....	4,754	20.5	119.2	4,172	18.0	104.6	1,541	6.6	38.6	1,163	5.0	29.2	1,580	6.8	39.6
2013.....	4,778	20.4	121.5	4,213	18.0	107.1	1,561	6.7	39.7	1,150	4.9	29.2	1,597	6.8	40.6
2012.....	4,967	21.0	125.7	4,214	17.8	106.6	1,676	7.1	42.4	1,163	4.9	29.4	1,518	6.4	38.4
2011.....	5,016	20.9	126.9	4,115	17.1	104.1	1,905	7.9	48.2	1,167	4.9	29.5	1,598	6.7	40.4
2010.....	5,115	20.8	127.9	4,151	16.9	103.8	2,058	8.4	51.5	1,107	4.5	27.7	1,563	6.4	39.1

NOTE: The five leading causes of death (based on *International Classification of Diseases, 10th Revision, 1992*) were the same from 2010–2024, but ranking changed in 2020 and later years compared with previous years.

SOURCE: National Center for Health Statistics, National Vital Statistics System, linked birth/infant death file.

Table 4. Infant deaths and mortality rate for the five leading causes of infant death, by maternal race and Hispanic origin: United States, 2024

[Rates are per 100,000 live births in specified group]

Cause of death (based on <i>International Classification of Diseases, 10th Revision, 1992</i>)	Non-Hispanic																	
	All races			American Indian and Alaska Native			Asian ¹			Black			Native Hawaiian or Other Pacific Islander			White		
	Rank	Number	Rate	Rank	Number	Rate	Rank	Number	Rate	Rank	Number	Rate	Rank	Number	Rate	Rank	Number	Rate
All causes.....	...	20,048	552.4	...	221	920.0	...	843	371.6	...	5,199	1,098.3	...	82	790.4	...	7,870	441.4
Congenital malformations, deformations, and chromosomal abnormalities..... (Q00–Q99)	1	4,091	112.7	1	40	166.5	1	150	66.1	2	676	142.8	1	16	154.2	1	1,795	100.7
Disorders related to short gestation and low birth weight, not elsewhere classified..... (P07)	2	2,945	81.2	2	30	124.9	2	143	63.0	1	958	202.4	2	10	96.4	2	929	52.1
Sudden infant death syndrome..... (R95)	3	1,350	37.2	4	21	87.4	6	28	12.3	3	400	84.5	...	*	*	3	562	31.5
Accidents (unintentional injuries)..... (V01–X59)	4	1,235	34.0	3	24	99.9	9	18	7.9	4	394	83.2	...	*	*	4	527	29.6
Newborn affected by maternal complications of pregnancy..... (P01)	5	1,199	33.0	5	12	50.0	3	61	26.9	5	323	68.2	...	*	*	5	392	22.0

Cause of death (based on <i>International Classification of Diseases, 10th Revision, 1992</i>)	Hispanic																	
	Total Hispanic			Central and South American ²			Cuban			Dominican			Mexican			Puerto Rican		
	Rank	Number	Rate	Rank	Number	Rate	Rank	Number	Rate	Rank	Number	Rate	Rank	Number	Rate	Rank	Number	Rate
All causes.....	...	4,804	488.2	...	1,038	447.9	...	136	420.9	...	169	493.8	...	2529	485.3	...	409	624.3
Congenital malformations, deformations, and chromosomal abnormalities..... (Q00–Q99)	1	1,215	123.5	1	303	130.8	1	29	89.7	1	32	93.5	1	649	124.5	2	69	105.3
Disorders related to short gestation and low birth weight, not elsewhere classified..... (P07)	2	709	72.0	2	146	63.0	2	20	61.9	2	29	84.7	2	367	70.4	1	75	114.5
Sudden infant death syndrome..... (R95)	4	252	25.6	5	45	19.4	...	*	*	4	10	29.2	4	119	22.8	3	36	54.9
Accidents (unintentional injuries)..... (V01–X59)	5	186	18.9	6	24	10.4	...	*	*	...	*	*	5	107	20.5	5	23	35.1
Newborn affected by maternal complications of pregnancy..... (P01)	3	331	33.6	3	61	26.3	...	*	*	3	15	43.8	3	179	34.3	4	31	47.3

... Category not applicable.

* Estimate does not meet National Center for Health Statistics standards of reliability.

¹For infants born to Asian non-Hispanic women, Bacterial sepsis (P36.9) was the fourth leading cause of death, with 35 deaths and a rate of 15.4. Complications of placenta, cord and membranes (P02) was the fifth leading cause of death, with 30 deaths and a rate of 13.2

²For infants born to Central and South American women, Bacterial sepsis (P36.9) was the fourth leading cause of death, with 49 deaths and a rate of 21.1.

NOTES: Certain cause-specific infant mortality rates and rankings cannot be shown for infants of Native Hawaiian or Other Pacific Islander non-Hispanic, Cuban, and Dominican women because of the small number of infant deaths. Race and Hispanic origin are reported separately on birth certificates. Race categories are consistent with the 1997 Office of Management and Budget standards. People of Hispanic origin may be of any race.

SOURCE: National Center for Health Statistics, National Vital Statistics System, linked birth/infant death file.

Table 5. Infant mortality rate: United States and each State, 2024

[By place of residence]

Area	Rate (deaths per 1,000 births)	Infant deaths	Live births
United States ¹	5.52	20,048	3,628,934
Alabama	7.06	409	57,934
Alaska	6.82	61	8,943
Arizona	5.40	425	78,711
Arkansas	8.28	293	35,395
California	4.18	1,682	402,075
Colorado	4.54	292	64,268
Connecticut	4.51	156	34,599
Delaware	7.77	82	10,550
District of Columbia	6.04	46	7,616
Florida	5.74	1,287	224,389
Georgia	6.40	809	126,437
Hawaii	4.36	65	14,917
Idaho	4.73	110	23,276
Illinois	5.73	720	125,731
Indiana	6.33	508	80,257
Iowa	4.50	164	36,436
Kansas	5.86	199	33,984
Kentucky	5.88	311	52,913
Louisiana	7.58	404	53,305
Maine	4.48	52	11,601
Maryland	5.53	364	65,797
Massachusetts	3.49	238	68,184
Michigan	6.33	630	99,525
Minnesota	4.60	286	62,110
Mississippi	9.65	323	33,473
Missouri	6.44	438	67,998
Montana	6.18	70	11,331
Nebraska	6.54	162	24,785
Nevada	5.34	173	32,381
New Hampshire	2.97	35	11,770
New Jersey	3.37	342	101,372
New Mexico	5.16	110	21,328
New York	3.95	811	205,489
North Carolina	6.24	767	122,856
North Dakota	5.92	57	9,634
Ohio	6.65	843	126,795
Oklahoma	7.42	356	47,962
Oregon	4.93	192	38,963
Pennsylvania	5.68	723	127,299
Rhode Island	4.20	42	10,009
South Carolina	7.49	440	58,768
South Dakota	7.34	84	11,451
Tennessee	6.41	537	83,833
Texas	5.70	2,226	390,828
Utah	5.16	241	46,664
Vermont	5.57	28	5,023
Virginia	5.95	560	94,054
Washington	4.79	398	83,118
West Virginia	6.64	113	17,022
Wisconsin	5.91	353	59,686
Wyoming	4.60	28	6,089
Puerto Rico	7.50	136	18,128
Guam	11.11	26	2,340

¹Does not include Puerto Rico or Guam.

SOURCE: National Center for Health Statistics, National Vital Statistics System, linked birth/infant death file.

Technical Notes

Data source and 2003 revision

Information on the data source for the linked birth/infant death file is available elsewhere (1). Additionally, further information on the 2003 revision of the birth certificate is available (3); see also the U.S. Standard Certificate of Live Birth (9).

Weighting

In 2024, a record weight was added to the U.S. linked file to compensate for the 1.2% of infant death records that could not be linked to their corresponding birth certificates. The percentage of records linked varied by registration area, ranging from 95.3% to 100.0% (1). The number of infant deaths in the linked file for the 50 states and the District of Columbia was weighted to equal the sum of the linked plus unlinked infant deaths by state of occurrence of birth and age at death (younger than 7 days, 7–27 days, and 28–364 days). The addition of the weight reduced the potential for bias in comparing infant mortality rates by maternal and infant characteristics.

The 2024 linked file initially included 20,086 infant death records. Of these records, 19,836 were linked; 250 were unlinked because corresponding birth certificates could not be identified. The 20,086 linked and unlinked records contained 32 records of infants whose mothers' usual place of residence was outside of the United States; these records were excluded from linked file analyses for a weighted total of 20,048 infant deaths by place of residence for 2024.

Comparison of infant mortality data between linked file and vital statistics mortality file

The overall infant mortality rate of 5.52 from the 2024 period linked file is statistically the same as that from the 2024 vital statistics mortality file (5.53) (10). The number of infant deaths in the linked file (19,836) differs slightly from the number in the mortality file (20,050) (10). Differences in numbers of infant deaths between the two data sources are primarily due to geographic coverage differences. For the vital statistics mortality file, all deaths occurring in the 50 states and the District of Columbia are included regardless of the place of birth of the infant. In contrast, to be included in the U.S. linked file, both the birth and death must occur in the 50 states or the District of Columbia (the territory linked file is a separate file). Weighting of the linked file also may contribute to small differences in numbers and rates by specific variables between these two data sets.

Period of gestation

Beginning with the 2014 data year, the National Center for Health Statistics (NCHS) transitioned to a new standard for estimating the gestational age of the newborn. The new measure—the obstetric estimate of gestation at delivery—replaces the measure based on the date of the last normal

menses (11). Accordingly, gestational age data shown in this report are based on the obstetric estimate of gestation at delivery. National data based on obstetric estimate of gestation at delivery data are available only from data year 2007 forward. Information on and discussion of the reasons for the change, as well as a detailed comparison of the two measures, are presented elsewhere (11).

Sex, birthweight, plurality, and nativity

Detailed definitions and more information on sex, birthweight, plurality, and nativity are available elsewhere (1,3).

Cause-of-death classification

The mortality statistics presented in this report were compiled in accordance with the current revision of the *International Statistical Classification of Diseases (ICD)*. ICD provides the basic guidance to code and classify causes of death, details disease classification, and supplies definitions, tabulation lists, the format of the death certificate, and the rules for coding cause of death. Cause-of-death data presented in this report were coded by procedures outlined in annual issues of the *NCHS Instruction Manual* (12,13).

In this report, tabulations of cause-of-death statistics are based solely on the underlying cause of death. Generally, more medical information is reported on death certificates than is directly reflected in the underlying cause of death. This is captured in NCHS multiple cause-of-death statistics (14,15).

Tabulation lists and cause-of-death ranking

The cause-of-death rankings for ICD–10 are based on the “List of 130 Selected Causes of Infant Death.” The tabulation lists and rules for ranking leading causes of death are published in the *NCHS Instruction Manual, Part 9: “ICD–10 Cause-of-death Lists for Tabulating Mortality Statistics”* (16).

Computation of rates

Information on and discussion of computation of rates (1) is also available from the “User Guide to the 2010 Natality Public Use File” at: https://ftp.cdc.gov/pub/Health_Statistics/NCHS/Dataset_Documentation/DVS/natality/UserGuide2010.pdf.

Presentation of counts, rates, and percentages

An asterisk (*) in the tables indicates that a count, rate, or percentage does not meet NCHS standards of reliability (17,18). Three separate criteria are used to determine if a count (number of events), rate, or proportion meets these suppression standards (3).

Presentation of counts and rates

New criteria for showing counts and rates were adopted by NCHS beginning with 2023 data (17). For counts, the number of deaths is shown depending on the count of deaths and on

the relative width of the confidence interval of the count, based on a gamma distribution. Before the 2023 data year, the number of deaths was shown regardless of the count. For rates, if a rate is shown depends on the count for the numerator and on the relative width of the confidence interval of the rate based on a Student's *t* confidence interval for the logarithm of the rate. Rates published for data years before 2023 were represented by an asterisk when the numerator was fewer than 20 deaths. For detailed information on the new criteria, see "National Center for Health Statistics Data Presentation Standards for Rates and Counts" (17).

Presentation of percentages

For proportions (or percentages) for linked birth/infant deaths, new criteria adopted by NCHS were implemented starting with the 2023 data year (18). For 2023 and later, a proportion (percentage) was shown based on the denominator size and on the absolute or relative widths of the confidence interval of the proportion or percentage calculated using the Clopper–Pearson method. For the presentation criterion used before the 2023 data year, see the 2023 Natality User Guide (3). Starting in 2023, proportions or percentages based on fewer than 10 infant deaths are represented with an asterisk. For detailed information on these criteria, see "National Center for Health Statistics Data Presentation Standards for Proportions" (18).

Random variation in infant mortality rates

For information and discussion on random variation and significance testing for linked data (1), see also the "User Guide to the 2010 Natality Public Use File" at: https://ftp.cdc.gov/pub/Health_Statistics/NCHS/Dataset_Documentation/DVS/natality/UserGuide2010.pdf.

Availability of linked file

Linked file data are available for download from the Vital Statistics Online Data Portal: https://www.cdc.gov/nchs/data_access/vitalstatsonline.htm. Linked period file data may also be accessed via the Centers for Disease Control and Prevention's WONDER database, available from: <https://wonder.cdc.gov/lbd.html>. Beginning with 2005, the public-use file no longer includes geographic detail; such files are available upon special request (see the NCHS Division of Vital Statistics data release policy at: <https://www.cdc.gov/nchs/nvss/nvss-restricted-data.htm>). Data are also available in issues of *Vital and Health Statistics, Series 20; National Vital Statistics Reports; and NCHS Data Briefs* from the NCHS website: <https://www.cdc.gov/nchs/products/index.htm>.

**U.S. DEPARTMENT OF
HEALTH & HUMAN SERVICES**

Centers for Disease Control and Prevention
National Center for Health Statistics
3311 Toledo Road, Room 4551, MS P08
Hyattsville, MD 20782–2064

FIRST CLASS MAIL
POSTAGE & FEES PAID
CDC/NCHS
PERMIT NO. G-284

OFFICIAL BUSINESS
PENALTY FOR PRIVATE USE, \$300

For more NCHS NVSRs, visit:
<https://www.cdc.gov/nchs/products/nvsr.htm>.



National Vital Statistics Reports, Vol. 75, No. 3, June 16, 2026

Contents

Abstract	1
Introduction	1
Methods	1
Data by maternal and infant characteristics	2
Results	2
Trends in infant mortality and infant age at death	2
Race and Hispanic origin	3
Maternal age	4
Gestational age	4
Leading causes of infant death	4
Infant mortality by state	5
References	6
List of Detailed Tables	7
Technical Notes	19

Acknowledgments

This report was prepared by the Division of Vital Statistics (DVS) under the general direction of DVS Director Paul Sutton; Robert Anderson, Chief, Statistical Analysis and Surveillance Branch; and Joyce Martin, Team Leader, Perinatal Research and Statistics Team, Statistical Analysis and Surveillance Branch. Rajesh Virkar, Chief of the Information Technology Branch (ITB), Annie S. Liu, and Prameela Sathunuru of ITB provided computer programming support. Annie S. Liu prepared the natality file. Annie S. Liu and Prameela Sathunuru prepared the linked birth/infant death data file. The Data Acquisition, Classification, and Evaluation Branch staff of DVS evaluated the quality of and acceptance procedures for the state data files on which this report is based. The National Center for Health Statistics Office of Information Services, Information Design and Publishing Staff, edited and produced this report: editor Jen Hurlburt and typesetter and graphic designer Jiale Feng.

Suggested citation

Ely DM, Driscoll AK. Infant mortality in the United States, 2024: Data from the period linked birth/infant death file. *Natl Vital Stat Rep.* 2026 Jun;75(3):1–21. DOI: <https://dx.doi.org/10.15620/cdc/252441>.

Copyright information

All material appearing in this report is in the public domain and may be reproduced or copied without permission; citation as to source, however, is appreciated.

National Center for Health Statistics

Carolyn M. Greene, M.D., *Acting Director*
Amy M. Branum, Ph.D., *Associate Director for Science*

Division of Vital Statistics

Paul D. Sutton, Ph.D., *Director*
Andrés A. Berruti, Ph.D., M.A., *Associate Director for Science*