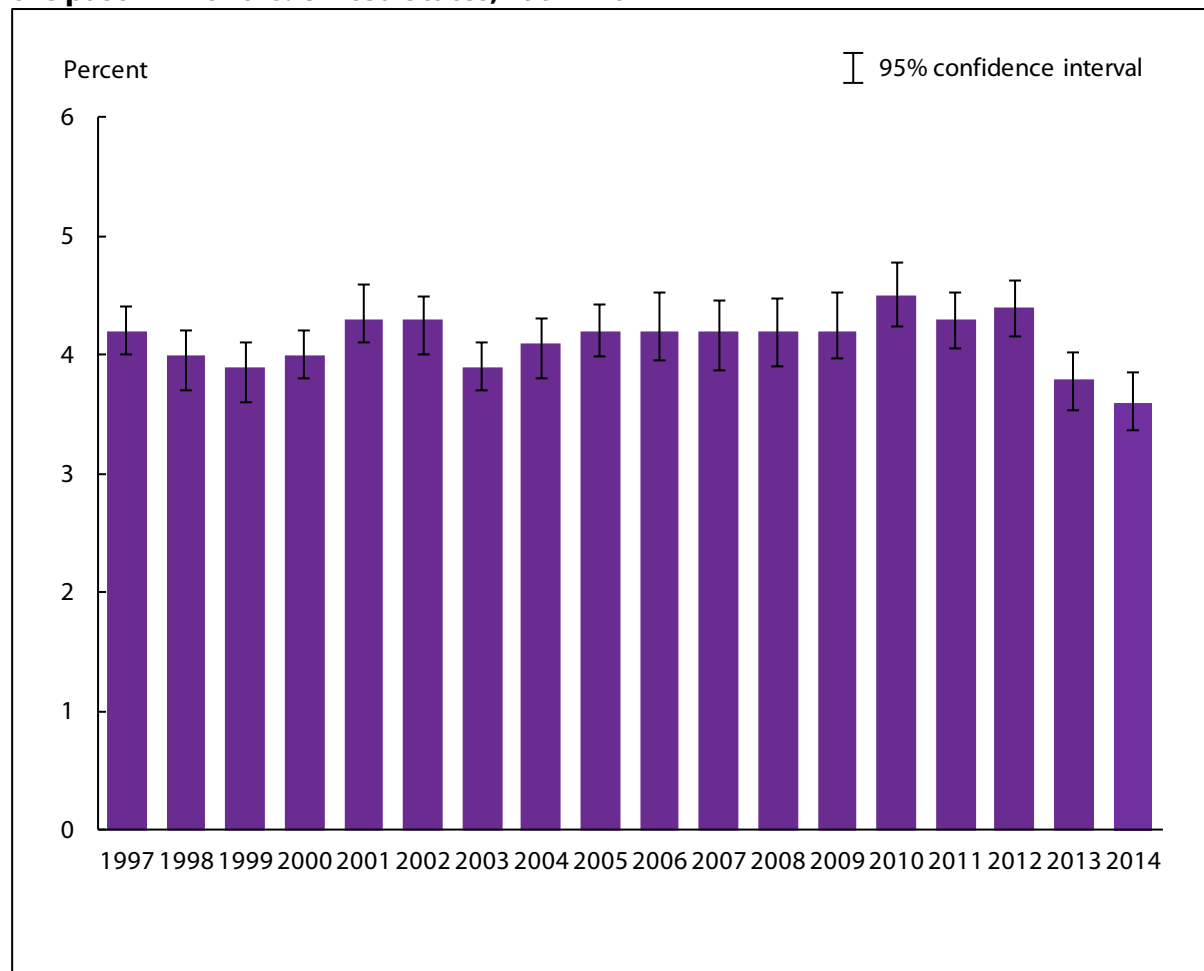


Asthma

Figure 15.1. Percentage of persons of all ages who experienced an asthma episode in the past 12 months: United States, 1997–2014

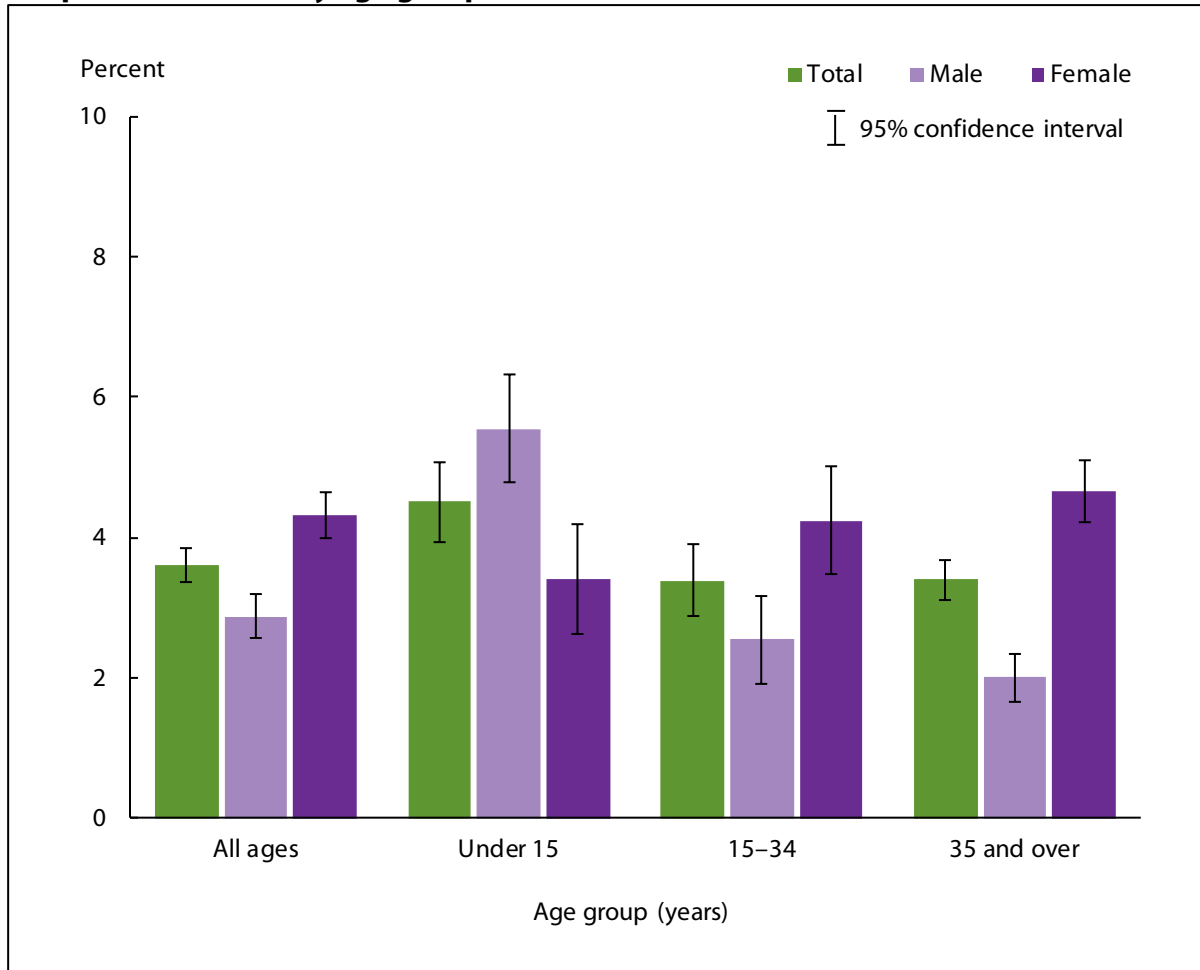


NOTES: Data are based on household interviews of a sample of the civilian noninstitutionalized population. Information on an episode of asthma or asthma attack during the past 12 months is self-reported by adults aged 18 and over. For children under age 18, the information is collected from an adult family member, usually a parent, who is knowledgeable about the child’s health. The analyses excluded people with unknown asthma episode status (about 0.1% of respondents each year). See [Technical Notes](#) for more details.

DATA SOURCE: CDC/NCHS, National Health Interview Survey, 1997–2014, combined Sample Adult and Sample Child Core components.

- For 2014, the percentage of persons of all ages who experienced an asthma episode in the past 12 months was 3.6% (95% confidence interval = 3.36%–3.85%), which was not significantly different than the 2013 estimate of 3.8%.
- The percentage of persons of all ages who experienced an asthma episode in the past 12 months was lowest in 2014 (3.6%) and highest in 2010 (4.5%), and decreased from 4.4% in 2012 to 3.6% in 2014.

Figure 15.2. Percentage of persons of all ages who experienced an asthma episode in the past 12 months, by age group and sex: United States, 2014

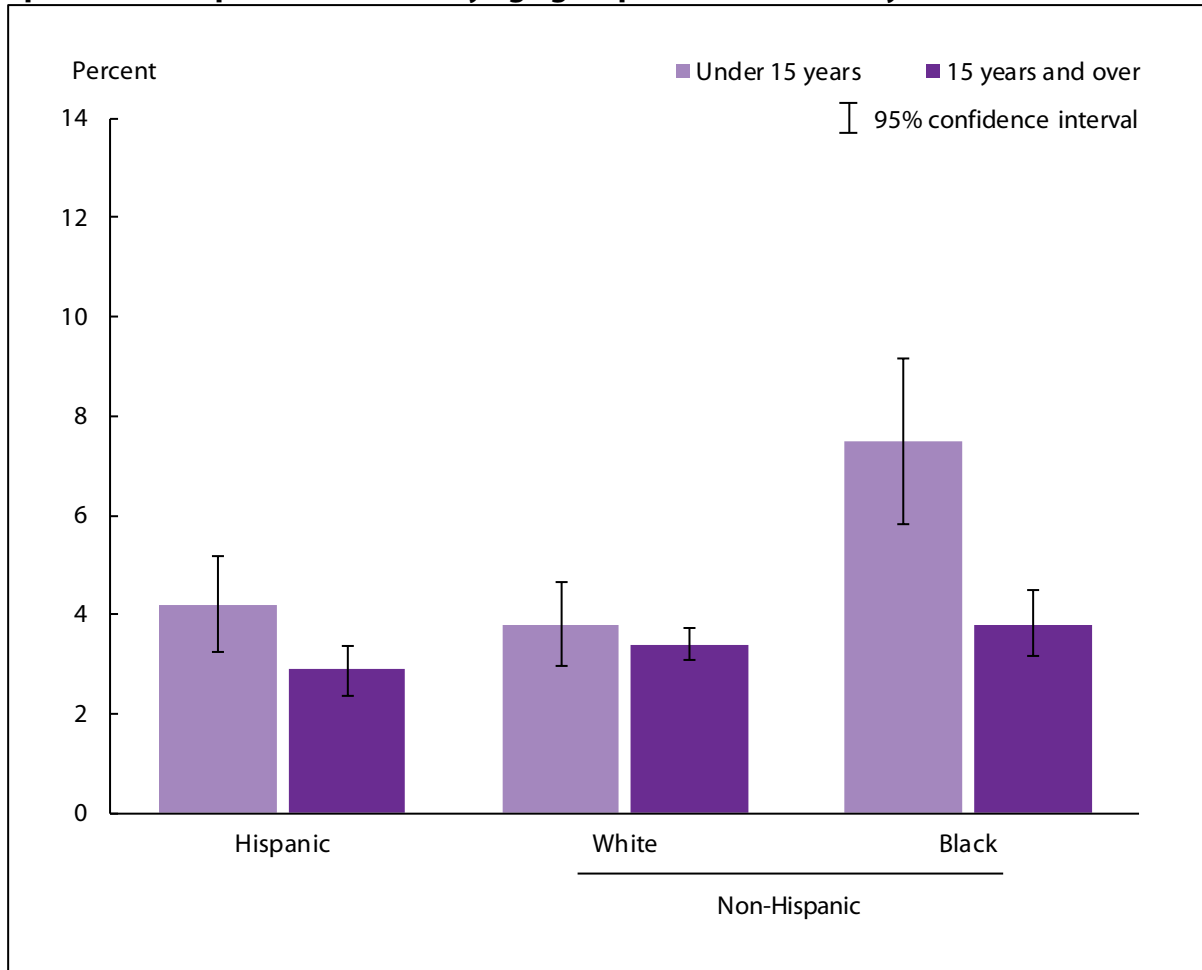


NOTES: Data are based on household interviews of a sample of the civilian noninstitutionalized population. Information on an episode of asthma or asthma attack during the past 12 months is self-reported by adults aged 18 and over. For children under age 18, the information is collected from an adult family member, usually a parent, who is knowledgeable about the child's health. The analyses excluded the 0.1% of persons with unknown asthma episode status. See [Technical Notes](#) for more details.

DATA SOURCE: CDC/NCHS, National Health Interview Survey, 2014, combined Sample Adult and Sample Child Core components.

- For both sexes combined and for males, the percentages of persons who had an asthma episode in the past 12 months were higher among children under age 15 than among persons aged 15-34 and 35 and over. For females, the percentage of persons who had an asthma episode in the past 12 months was lower among children under age 15 than among persons aged 35 and over.
- For persons of all ages and the age groups 15-34 and 35 and over, the percentage of persons who had an asthma episode in the past 12 months was higher among females than among males. For children under age 15, the percentage who had an asthma episode in the past 12 months was higher among boys than among girls.

Figure 15.3. Sex-adjusted percentage of persons of all ages who experienced an asthma episode in the past 12 months, by age group and race/ethnicity: United States, 2014

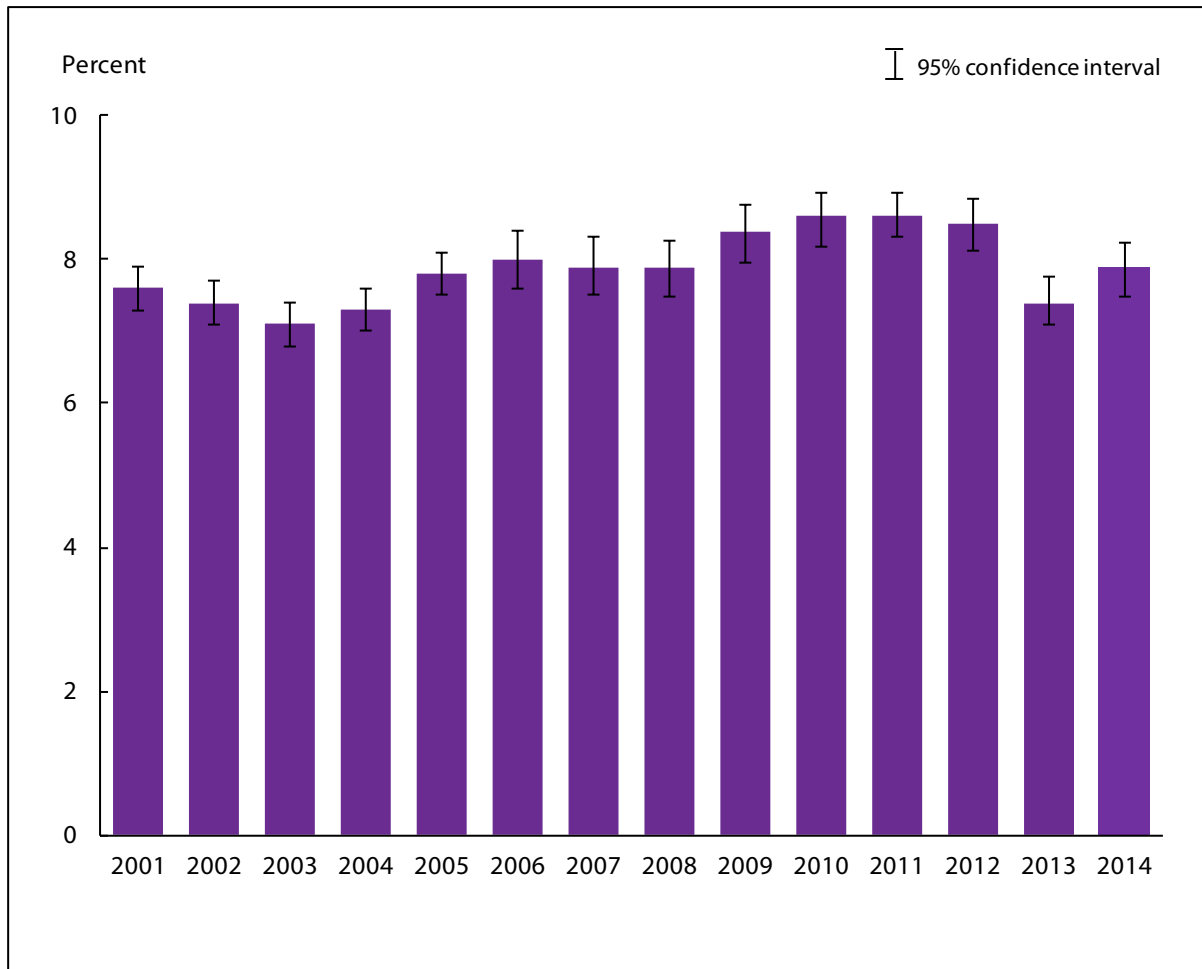


NOTES: Data are based on household interviews of a sample of the civilian noninstitutionalized population. Information on an episode of asthma or asthma attack during the past 12 months is self-reported by adults aged 18 years and over. For children under age 18, the information is collected from an adult family member, usually a parent, who is knowledgeable about the child's health. The analyses excluded the 0.1% of persons with unknown asthma episode status. Additional estimates of asthma episodes in the past 12 months among persons with current asthma are provided in the Data table for Figure 15.3. See [Technical Notes](#) for more details.

DATA SOURCE: CDC/NCHS, National Health Interview Survey, 2014, combined Sample Adult and Sample Child Core components.

- For children under age 15, the sex-adjusted percentages who had an asthma episode in the past 12 months were 4.2% for Hispanic children, 3.8% for non-Hispanic white children, and 7.5% for non-Hispanic black children.
- For persons aged 15 and over, the sex-adjusted percentages who had an asthma episode in the past 12 months were 2.9% for Hispanic persons, 3.4% for non-Hispanic white persons, and 3.8% for non-Hispanic black persons.
- After adjustment for sex, Hispanic and non-Hispanic white children under age 15 were less likely to have had an asthma episode in the past 12 months than were non-Hispanic black children under age 15.
- After adjustment for sex, Hispanic persons aged 15 and over were less likely to have had an asthma episode in the past 12 months than were non-Hispanic black persons aged 15 and over.

Figure 15.4. Prevalence of current asthma among persons of all ages: United States, 2001–2014

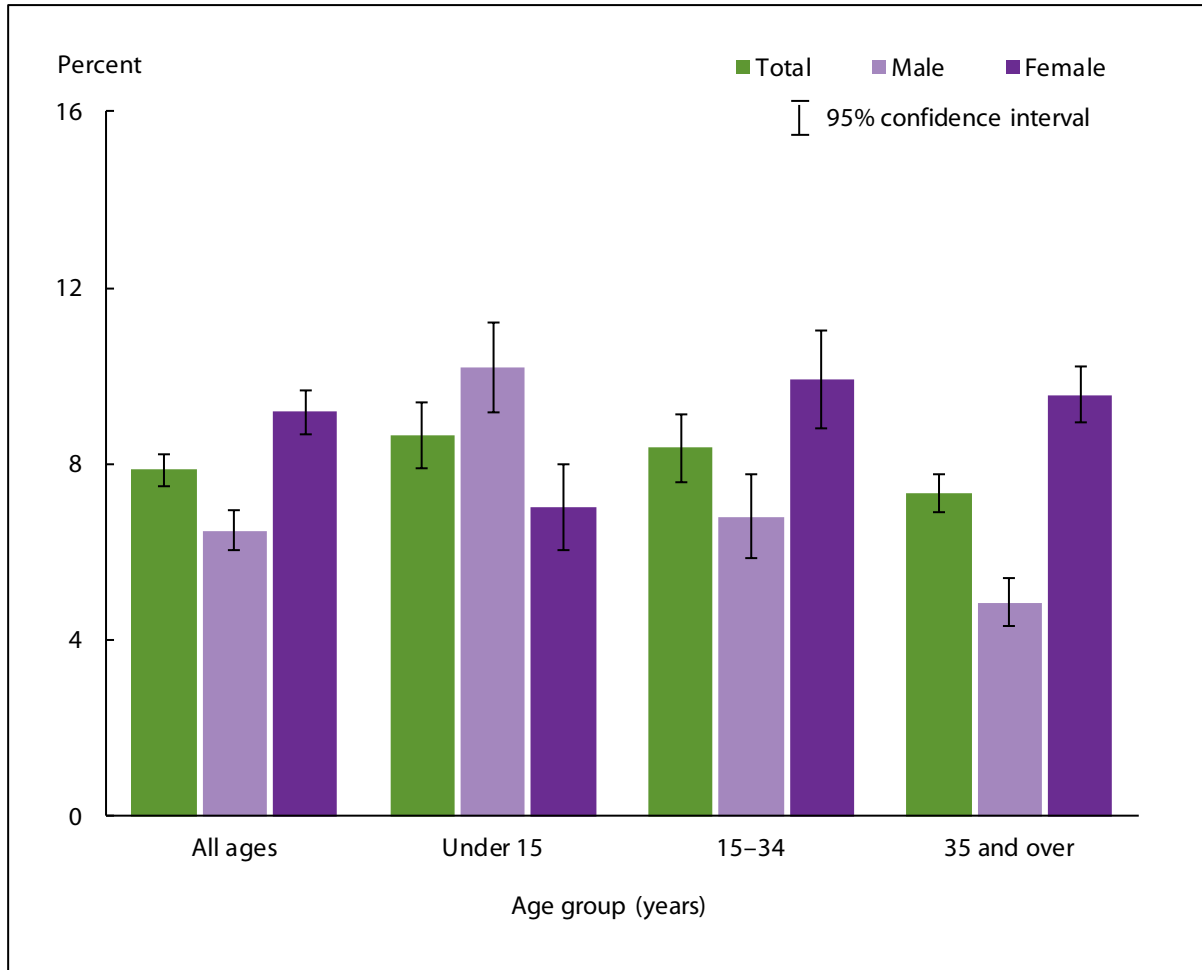


NOTES: Data are based on household interviews of a sample of the civilian noninstitutionalized population. Beginning in 2001, respondents were asked about current asthma in addition to the question regarding asthma episodes. Information on current asthma is self-reported by adults aged 18 and over. For children under age 18, the information is collected from an adult family member, usually a parent, who is knowledgeable about the child's health. The analyses excluded people with unknown current asthma status (about 0.2% of respondents each year). See [Technical Notes](#) for more details.

DATA SOURCE: CDC/NCHS, National Health Interview Survey, 2001–2014, combined Sample Adult and Sample Child Core components.

- For 2014, 7.9% (95% confidence interval = 7.49%–8.24%) of persons of all ages currently had asthma. This was higher than the 2013 estimate of 7.4%.
- The percentage of current asthma among persons of all ages was lowest in 2003 (7.1%) and highest in 2010 and 2011 (8.6%).

Figure 15.5. Prevalence of current asthma among persons of all ages, by age group and sex: United States, 2014

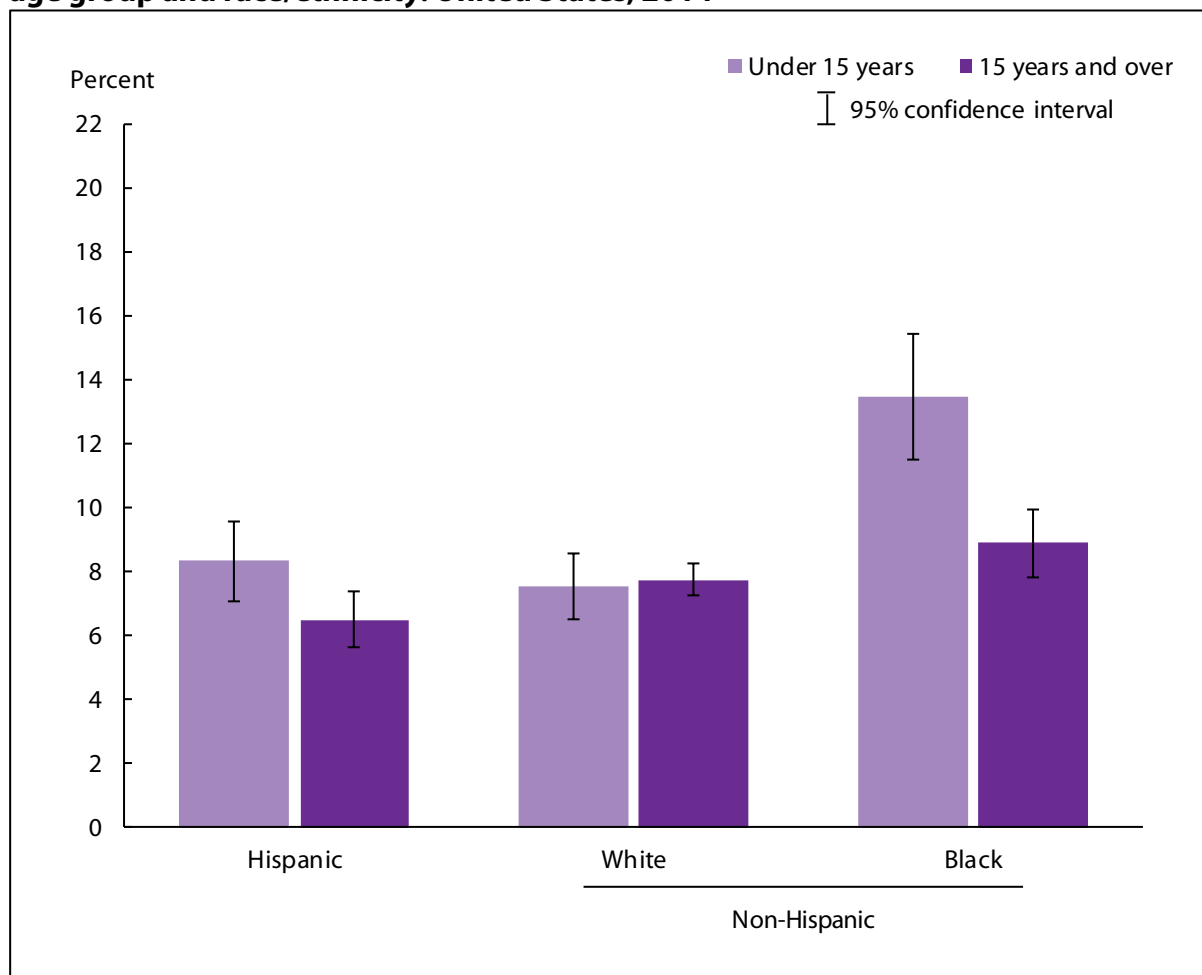


NOTES: Data are based on household interviews of a sample of the civilian noninstitutionalized population. Information on current asthma is self-reported by adults aged 18 and over. For children under age 18, the information is collected from an adult family member, usually a parent, who is knowledgeable about the child's health. The analyses excluded the 0.2% of persons with unknown current asthma status. See [Technical Notes](#) for more details.

DATA SOURCE: CDC/NCHS, National Health Interview Survey, 2014, combined Sample Adult and Sample Child Core components.

- For both sexes combined, persons aged 35 and over were less likely to currently have asthma than were persons under age 15 and aged 15-34.
- For persons of all ages and for persons aged 15-34 and 35 and over, the prevalence of current asthma was higher among females than males. For persons under age 15, the prevalence of current asthma was higher among boys than girls.

Figure 15.6. Sex-adjusted prevalence of current asthma among persons of all ages, by age group and race/ethnicity: United States, 2014



NOTES: Data are based on household interviews of a sample of the civilian noninstitutionalized population. Information on current asthma is self-reported by adults aged 18 and over. For children under age 18, the information is collected from an adult family member, usually a parent, who is knowledgeable about the child's health. The analyses excluded the 0.2% of persons with unknown current asthma status. See [Technical Notes](#) for more details.

DATA SOURCE: CDC/NCHS, National Health Interview Survey, 2014, combined Sample Adult and Sample Child Core components.

- For children under age 15, the sex-adjusted prevalence of current asthma was higher among non-Hispanic black children (13.5%) than among Hispanic children (8.3%) and non-Hispanic white children (7.5%).
- For persons aged 15 and over, the sex-adjusted prevalence of current asthma was 6.5% for Hispanic persons, 7.7% for non-Hispanic white persons, and 8.9% for non-Hispanic black persons.

Data tables for Figures 15.1–15.6:

Data table for Figure 15.1. Percentage of persons of all ages who experienced an asthma episode in the past 12 months: United States, 1997–2014

Year	Crude ¹ percent (95% confidence interval)	Age-adjusted ² percent (95% confidence interval)
1997	4.2 (4.0-4.4)	4.2 (3.9-4.4)
1998	4.0 (3.7-4.2)	3.9 (3.7-4.2)
1999	3.9 (3.6-4.1)	3.9 (3.6-4.1)
2000	4.0 (3.8-4.2)	4.0 (3.8-4.2)
2001	4.3 (4.1-4.6)	4.3 (4.1-4.5)
2002	4.3 (4.0-4.5)	4.3 (4.0-4.5)
2003	3.9 (3.7-4.1)	3.9 (3.7-4.1)
2004	4.1 (3.8-4.3)	4.1 (3.8-4.3)
2005	4.2 (3.99-4.43)	4.2 (4.00-4.44)
2006	4.2 (3.96-4.52)	4.3 (3.98-4.54)
2007	4.2 (3.87-4.46)	4.2 (3.88-4.47)
2008	4.2 (3.91-4.48)	4.2 (3.93-4.50)
2009	4.2 (3.97-4.52)	4.3 (3.99-4.54)
2010	4.5 (4.24-4.77)	4.5 (4.25-4.78)
2011	4.3 (4.06-4.52)	4.3 (4.08-4.54)
2012	4.4 (4.15-4.63)	4.4 (4.17-4.65)
2013	3.8 (3.53-4.02)	3.8 (3.55-4.04)
2014	3.6 (3.36-3.85)	3.6 (3.37-3.88)

¹Crude estimates are presented in the figure.

²Estimates are age-adjusted using the projected 2000 U.S. population as the standard population and using three age groups: 0–14, 15–34, and 35 and over.

NOTES: Data are based on household interviews of a sample of the civilian noninstitutionalized population. Beginning with 2012 data, the National Health Interview Survey transitioned to weights derived from the 2010 census. For 2003–2011 data, weights were derived from the 2000 census. In this Early Release, estimates for 2000–2002 were recalculated using weights derived from the 2000 census. For 1997–1999 data, weights were derived from the 1990 census. See [Technical Notes](#) for more details.

DATA SOURCE: CDC/NCHS, National Health Interview Survey, 1997–2014, combined Sample Adult and Sample Child Core components.

Data table for Figure 15.2. Percentage of persons of all ages who experienced an asthma episode in the past 12 months, by age group and sex: United States, 2014

Age (years) and sex	Percent	95% confidence interval
Under 15, total	4.5	3.92-5.08
Under 15, male	5.5	4.78-6.32
Under 15, female	3.4	2.63-4.18
15-34, total	3.4	2.88-3.90
15-34, male	2.5	1.91-3.16
15-34, female	4.2	3.46-5.02
35 and over, total	3.4	3.10-3.68
35 and over, male	2.0	1.66-2.33
35 and over, female	4.6	4.20-5.09
All ages (crude ¹), total	3.6	3.36-3.85
All ages (crude ¹), male	2.9	2.56-3.18
All ages (crude ¹), female	4.3	3.98-4.64
All ages (age-adjusted ²), total	3.6	3.37-3.88
All ages (age-adjusted ²), male	2.9	2.59-3.22
All ages (age-adjusted ²), female	4.3	3.93-4.61

¹Crude estimates are presented in the figure.

²Estimates are age-adjusted using the projected 2000 U.S. population as the standard population and using three age groups: 0-14, 15-34, and 35 and over.

NOTE: Data are based on household interviews of a sample of the civilian noninstitutionalized population.

DATA SOURCE: CDC/NCHS, National Health Interview Survey, 2014, combined Sample Adult and Sample Child Core components.

Data table for Figure 15.3. Sex-adjusted percentage of persons who experienced an asthma episode in the past 12 months, among all persons and among persons with current asthma, by age group and race/ethnicity: United States, 2014

Age (years) and race/ethnicity	All persons	All persons with current asthma
	Sex-adjusted percent ¹ (95% confidence interval)	
Under 15, Hispanic or Latino	4.2 (3.25-5.19)	50.2 (41.76-58.60)
Under 15, not Hispanic or Latino, single race, white	3.8 (2.97-4.65)	49.9 (42.12-57.63)
Under 15, not Hispanic or Latino, single race, black	7.5 (5.83-9.15)	55.0 (45.80-64.16)
15 and over, Hispanic or Latino	2.9 (2.36-3.36)	44.7 (37.54-51.77)
15 and over, not Hispanic or Latino, single race, white	3.4 (3.08-3.74)	42.9 (39.43-46.41)
15 and over, not Hispanic or Latino, single race, black	3.8 (3.17-4.50)	42.2 (35.35-49.01)

¹Estimates for all persons are presented in the figure. Estimates are sex-adjusted using the projected 2000 U.S. population as the standard population.

NOTE: Data are based on household interviews of a sample of the civilian noninstitutionalized population.

DATA SOURCE: CDC/NCHS, National Health Interview Survey, 2014, combined Sample Adult and Sample Child Core components.

Data table for Figure 15.4. Prevalence of current asthma among persons of all ages: United States, 2001–2014

Year	Crude ¹ percent (95% confidence interval)	Age-adjusted ² percent (95% confidence interval)
2001	7.6 (7.3-7.9)	7.6 (7.3-7.9)
2002	7.4 (7.1-7.7)	7.4 (7.1-7.7)
2003	7.1 (6.8-7.4)	7.1 (6.8-7.4)
2004	7.3 (7.0-7.6)	7.3 (7.1-7.7)
2005	7.8 (7.50-8.10)	7.8 (7.51-8.11)
2006	8.0 (7.61-8.41)	8.0 (7.62-8.43)
2007	7.9 (7.50-8.31)	7.9 (7.51-8.33)
2008	7.9 (7.48-8.27)	7.9 (7.51-8.30)
2009	8.4 (7.97-8.76)	8.4 (7.99-8.78)
2010	8.6 (8.19-8.94)	8.6 (8.20-8.95)
2011	8.6 (8.31-8.93)	8.6 (8.32-8.95)
2012	8.5 (8.12-8.86)	8.5 (8.15-8.88)
2013	7.4 (7.09-7.76)	7.4 (7.11-7.77)
2014	7.9 (7.49-8.24)	7.9 (7.52-8.27)

¹Crude estimates are presented in the figure.

²Estimates are age-adjusted using the projected 2000 U.S. population as the standard population and using three age groups: 0–14, 15–34, and 35 and over.

NOTES: Data are based on household interviews of a sample of the civilian noninstitutionalized population. Beginning with 2012 data, the National Health Interview Survey transitioned to weights derived from the 2010 census. For 2003–2011 data, weights were derived from the 2000 census. In this Early Release, estimates for 2000–2002 were recalculated using weights derived from the 2000 census. For 1997–1999 data, weights were derived from the 1990 census. See [Technical Notes](#) for more details.

DATA SOURCE: CDC/NCHS, National Health Interview Survey, 2001–2014, combined Sample Adult and Sample Child Core components.

Data table for Figure 15.5. Prevalence of current asthma among persons of all ages, by age group and sex: United States, 2014

Age (years) and sex	Percent	95% confidence interval
Under 15, total	8.6	7.89-9.38
Under 15, male	10.2	9.16-11.23
Under 15, female	7.0	6.03-7.99
15-34, total	8.4	7.60-9.12
15-34, male	6.8	5.88-7.75
15-34, female	9.9	8.82-11.02
35 and over, total	7.3	6.90-7.77
35 and over, male	4.9	4.32-5.41
35 and over, female	9.6	8.94-10.20
All ages (crude ¹), total	7.9	7.49-8.24
All ages (crude ¹), male	6.5	6.03-6.95
All ages (crude ¹), female	9.2	8.69-9.68
All ages (age-adjusted ²), total	7.9	7.52-8.27
All ages (age-adjusted ²), male	6.5	6.08-7.01
All ages (age-adjusted ²), female	9.1	8.63-9.61

¹Crude estimates are presented in the figure.

²Estimates are age-adjusted using the projected 2000 U.S. population as the standard population and using three age groups: 0-14, 15-34, and 35 and over.

NOTE: Data are based on household interviews of a sample of the civilian noninstitutionalized population.

DATA SOURCE: CDC/NCHS, National Health Interview Survey, 2014, combined Sample Adult and Sample Child Core components.

Data table for Figure 15.6. Sex-adjusted prevalence of current asthma among persons of all ages, by age group and race/ethnicity: United States, 2014

Age (years) and race/ethnicity	Percent ¹	95% confidence interval
Under 15, Hispanic or Latino	8.3	7.08-9.58
Under 15, not Hispanic or Latino, single race, white	7.5	6.48-8.57
Under 15, not Hispanic or Latino, single race, black	13.5	11.47-15.45
15 and over, Hispanic or Latino	6.5	5.61-7.37
15 and over, not Hispanic or Latino, single race, white	7.7	7.23-8.24
15 and over, not Hispanic or Latino, single race, black	8.9	7.82-9.93

¹Estimates are sex-adjusted using the projected 2000 U.S. population as the standard population.

NOTE: Data are based on household interviews of a sample of the civilian noninstitutionalized population.

DATA SOURCE: CDC/NCHS, National Health Interview Survey, 2014, combined Sample Adult and Sample Child Core components.