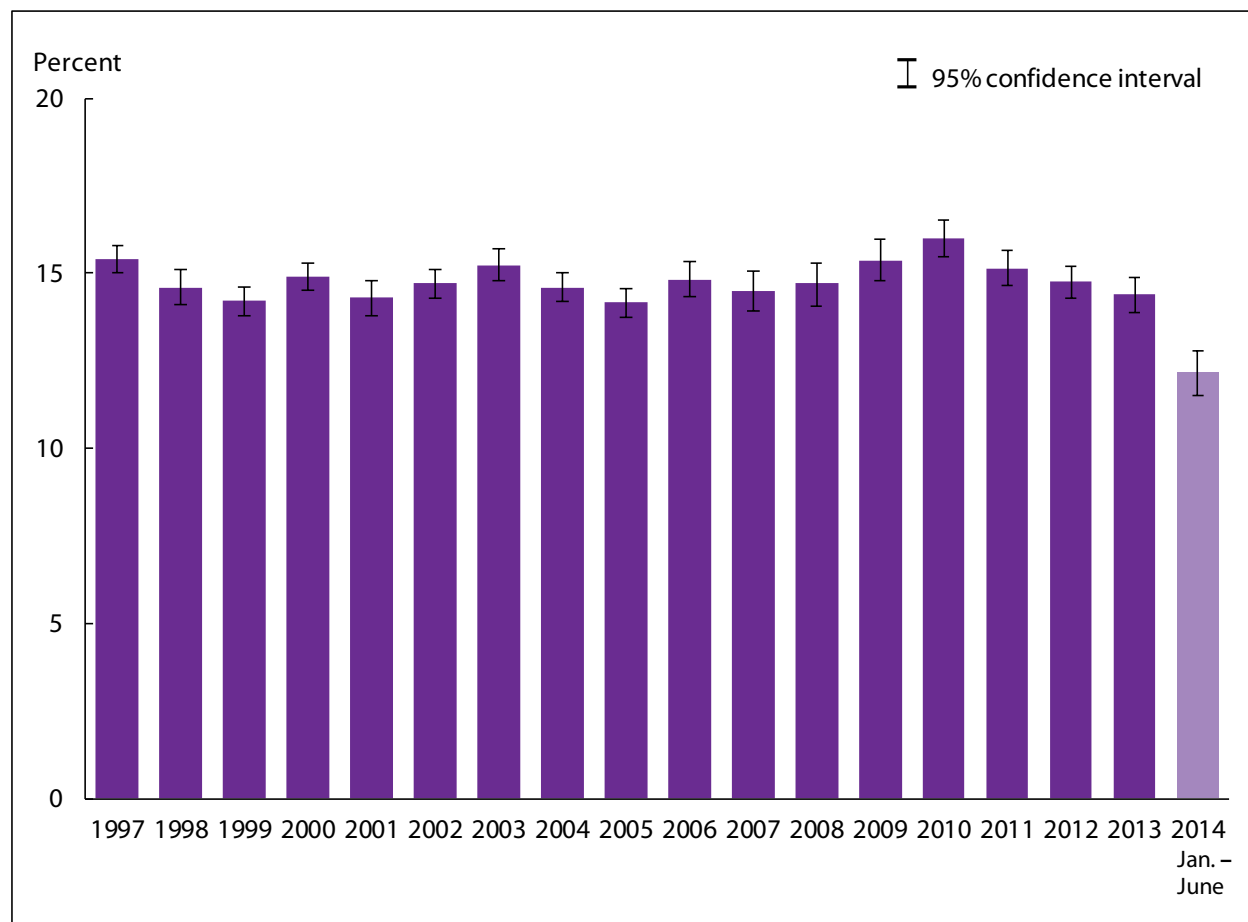


Lack of Health Insurance Coverage and Type of Coverage

Figure 1.1. Percentage of persons of all ages without health insurance coverage at the time of interview: United States, 1997–June 2014



NOTES: Data are based on household interviews of a sample of the civilian noninstitutionalized population. A person was defined as uninsured if he or she did not have any private health insurance, Medicare, Medicaid, Children’s Health Insurance Program (CHIP), state – sponsored or other government-sponsored health plan, or military plan at the time of interview. A person was also defined as uninsured if he or she had only Indian Health Service coverage or had only a private plan that paid for one type of service, such as accidents or dental care. The data on health insurance status were edited using an automated system based on logic checks and keyword searches. For comparability, the estimates for all years were created using these same procedures. The resulting estimates of persons without health insurance coverage are generally 0.1–0.3 percentage points lower than those based on the editing procedures used for the final data files. The analyses excluded persons with unknown health insurance status (about 1% of respondents each year). See [Technical Notes](#) for more details.

DATA SOURCE: CDC/NCHS, National Health Interview Survey, 1997–June 2014, Family Core component.

- For January–June 2014, the percentage uninsured at the time of interview was 12.2% (95% confidence interval = 11.52%–12.79%), which was lower than the 2013 estimate of 14.4%.
- The percentage uninsured at the time of interview decreased from 16.0% in 2010 to 12.2% in January–June 2014.

Table 1.1a. Number of persons without health insurance coverage at the time of interview, by age group: United States, 1997–June 2014

Year	All ages	Under 65 years	18–64 years	Under 18 years
	Number (millions)			
1997	41.0	40.7	30.8	9.9
1998	39.3	39.0	30.0	9.1
1999	38.7	38.3	29.8	8.5
2000	41.3	40.8	32.0	8.9
2001	40.2	39.8	31.9	7.9
2002	41.5	41.1	33.5	7.6
2003	43.6	43.2	35.9	7.3
2004 (Method 1 ¹)	42.5	42.0	35.0	7.0
2004 (Method 2 ¹)	42.1	41.7	34.9	6.8
2005	41.2	41.0	34.4	6.5
2006	43.6	43.3	36.5	6.8
2007	43.1	42.8	36.3	6.5
2008	43.8	43.6	37.1	6.6
2009	46.3	46.0	40.0	6.1
2010	48.6	48.2	42.5	5.8
2011	46.3	45.9	40.7	5.2
2012	45.5	45.2	40.3	4.9
2013	44.8	44.3	39.6	4.8
January–June 2014	38.0	37.6	33.1	4.5

See footnotes at end of table.

Table 1.1b. Percentage of persons without health insurance coverage at the time of the interview, by age group: United States, 1997–June 2014

Year	All ages	Under 65 years	Under 65 years	18–64 years	Under 18 years
	Percent (95% confidence interval)	Crude percent (95% confidence interval)	Age-adjusted percent (95% confidence interval)	Percent (95% confidence interval)	Percent (95% confidence interval)
1997	15.4 (15.0-15.8)	17.4 (16.9-17.9)	17.2 (16.8-17.7)	18.9 (18.4-19.4)	13.9 (13.2-14.6)
1998	14.6 (14.1-15.1)	16.5 (16.0-17.0)	16.4 (15.9-16.9)	18.2 (17.7-18.7)	12.7 (12.0-13.4)
1999	14.2 (13.8-14.6)	16.0 (15.5-16.5)	16.0 (15.5-16.5)	17.8 (17.3-18.3)	11.8 (11.2-12.4)
2000	14.9 (14.5-15.3)	16.8 (16.3-17.2)	16.8 (16.3-17.3)	18.7 (18.1-19.2)	12.3 (11.7-12.9)
2001	14.3 (13.8-14.8)	16.2 (15.7-16.7)	16.2 (15.7-16.7)	18.3 (17.8-18.8)	11.0 (10.3-11.7)
2002	14.7 (14.3-15.1)	16.5 (16.0-16.9)	16.6 (16.1-17.1)	19.1 (18.6-19.6)	10.5 (9.9-11.1)
2003	15.2 (14.8-15.7)	17.2 (16.6-17.7)	17.3 (16.8-17.8)	20.1 (19.5-20.6)	10.1 (9.4-10.7)
2004 (Method 1 ¹)	14.7 (14.3-15.2)	16.6 (16.1-17.0)	16.7 (16.3-17.2)	19.4 (18.9-19.9)	9.6 (9.0-10.2)
2004 (Method 2 ¹)	14.6 (14.2-15.0)	16.4 (16.0-16.9)	16.6 (16.2-17.1)	19.3 (18.8-19.8)	9.4 (8.8-10.0)
2005	14.2 (13.75-14.58)	16.0 (15.53-16.46)	16.2 (15.72-16.65)	18.9 (18.34-19.38)	8.9 (8.34-9.49)
2006	14.8 (14.34-15.34)	16.8 (16.21-17.33)	17.0 (16.44-17.57)	19.8 (19.12-20.42)	9.3 (8.60-9.92)
2007	14.5 (13.93-15.08)	16.4 (15.76-17.05)	16.6 (15.95-17.28)	19.4 (18.68-20.09)	8.9 (8.10-9.66)
2008	14.7 (14.04-15.27)	16.7 (15.96-17.36)	16.9 (16.24-17.63)	19.7 (18.95-20.51)	8.9 (8.04-9.73)
2009	15.4 (14.79-15.96)	17.5 (16.80-18.12)	17.7 (17.08-18.42)	21.1 (20.38-21.83)	8.2 (7.39-8.97)
2010	16.0 (15.46-16.52)	18.2 (17.58-18.77)	18.5 (17.87-19.07)	22.3 (21.57-22.95)	7.8 (7.12-8.39)
2011	15.1 (14.66-15.64)	17.3 (16.69-17.82)	17.5 (16.93-18.06)	21.3 (20.58-21.92)	7.0 (6.49-7.56)
2012	14.7 (14.29-15.21)	16.9 (16.41-17.46)	17.1 (16.59-17.62)	20.9 (20.28-21.51)	6.6 (6.07-7.13)
2013	14.4 (13.89-14.90)	16.6 (15.97-17.15)	16.7 (16.10-17.29)	20.4 (19.66-21.12)	6.5 (6.01-7.02)
January–June 2014	12.2 (11.52-12.79)	14.0 (13.29-14.75)	14.2 (13.42-14.92)	17.0 (16.17-17.85)	6.1 (5.29-6.96)

¹ In the third quarter of 2004, two additional questions were added to the National Health Interview Survey insurance section to reduce potential errors in reporting Medicare and Medicaid status. Persons aged 65 and over not reporting Medicare coverage were asked explicitly about Medicare coverage, and persons under age 65 with no reported coverage were asked explicitly about Medicaid coverage. Depending on responses to these two questions, respondents may have been reclassified. Estimates of uninsurance for 2004 are calculated both without the additional information from these new questions (noted as Method 1) and with the responses to these new questions (noted as Method 2). Beginning in 2005, all estimates are reported using Method 2. See [Technical Notes](#) for additional information.

NOTES: Data are based on household interviews of a sample of the civilian noninstitutionalized population. A person was defined as uninsured if he or she did not have any private health insurance, Medicare, Medicaid, Children’s Health Insurance Program (CHIP), state-sponsored or other government-sponsored health plan, or military plan at the time of interview. A person was also defined as uninsured if he or she had only Indian Health Service coverage or had only a private plan that paid for one type of service, such as accidents or dental care. The data on health insurance status were edited using an automated system based on logic checks and keyword searches. For comparability, the estimates for all years were created using these same procedures. The resulting estimates of persons without health insurance coverage are generally 0.1–0.3 percentage points lower than those based on the editing procedures used for the final data files. In Table 1.1a, the number of uninsured persons was calculated as the percentage of uninsured persons multiplied by the total weighted population, including

persons with unknown coverage. The age-specific numbers of uninsured may not add to their respective totals due to rounding. In Table 1.1b, age-adjusted estimates for persons under age 65 for this Healthy People 2020 Leading Health Indicator are adjusted using the projected 2000 U.S. population as the standard population and using three age groups: under 18, 18–44, and 45–64. The analyses excluded persons with unknown health insurance status (about 1% of respondents each year). • See [Technical Notes](#) for more details.

DATA SOURCE: CDC/NCHS, National Health Interview Survey, 1997–June 2014, Family Core component.

- For January–June 2014, the percentage uninsured at the time of interview was 14.2% (37.6 million) for persons under age 65, 17.0% (33.1 million) for persons aged 18–64, and 6.1% (4.5 million) for children under age 18 (Table 1.1a and 1.1b).
- For children under age 18, the percentage uninsured at the time of interview decreased from 13.9% in 1997 to 8.9% in 2005, then decreased again from 8.9% in 2008 to 6.1% in January–June 2014 (Table 1.1b).
- For adults aged 18–64, the percentage uninsured at the time of interview declined from 22.3% in 2010 to 17.0% in January–June 2014.

Table 1.2a. Percentage of persons under age 65 years with public health plan coverage, by age group: United States, 1997–June 2014

Year	Under 65 years	18–64 years	Under 18 years
	Percent (95% confidence interval)		
1997	13.6 (13.1-14.1)	10.2 (9.8-10.6)	21.4 (20.5-22.4)
1998	12.7 (12.2-13.2)	9.5 (9.1-9.9)	20.0 (19.0-20.9)
1999	12.4 (12.0-12.9)	9.0 (8.6-9.3)	20.4 (19.5-21.4)
2000	12.9 (12.4-13.4)	9.1 (8.7-9.4)	22.0 (21.0-23.0)
2001	13.6 (13.1-14.1)	9.4 (9.0-9.8)	23.6 (22.6-24.5)
2002	15.2 (14.6-15.8)	10.3 (9.9-10.7)	27.1 (26.0-28.2)
2003	16.0 (15.4-16.6)	10.9 (10.4-11.4)	28.6 (27.4-29.7)
2004 (Method 1 ¹)	16.1 (15.6-16.7)	11.1 (10.6-11.5)	28.5 (27.5-29.6)
2004 (Method 2 ¹)	16.2 (15.7-16.8)	11.1 (10.7-11.6)	28.7 (27.7-29.8)
2005	16.8 (16.26-17.38)	11.5 (11.12-11.98)	29.9 (28.80-30.99)
2006	18.1 (17.40-18.77)	12.4 (11.89-12.92)	32.3 (30.94-33.64)
2007	18.1 (17.35-18.90)	12.3 (11.72-12.95)	32.7 (31.22-34.25)
2008	19.3 (18.45-20.09)	13.4 (12.71-14.02)	34.2 (32.70-35.78)
2009	21.0 (20.22-21.76)	14.4 (13.84-15.05)	37.7 (36.23-39.19)
2010	22.0 (21.21-22.71)	15.0 (14.37-15.56)	39.8 (38.34-41.22)
2011	23.0 (22.23-23.68)	15.9 (15.34-16.47)	41.0 (39.56-42.48)
2012	23.5 (22.81-24.25)	16.4 (15.85-17.01)	42.1 (40.64-43.47)
2013	23.8 (23.06-24.45)	16.7 (16.14-17.32)	42.2 (40.81-43.56)
January–June 2014	24.5 (23.53-25.40)	17.6 (16.77-18.34)	42.7 (40.89-44.54)

See footnotes at end of table.

Table 1.2b. Percentage of persons under age 65 years with private health insurance coverage, by age group: United States, 1997–June 2014

Year	Under 65 years	18–64 years	Under 18 years
	Percent (95% confidence interval)		
1997	70.8 (70.1-71.5)	72.8 (72.2-73.4)	66.2 (65.1-67.3)
1998	72.0 (71.3-72.7)	73.5 (72.9-74.1)	68.5 (67.4-69.5)
1999	73.1 (72.3-73.8)	74.7 (74.1-75.4)	69.1 (68.0-70.2)
2000	71.8 (71.1-72.5)	73.8 (73.2-74.4)	67.1 (66.1-68.2)
2001	71.6 (70.9-72.3)	73.7 (73.1-74.4)	66.7 (65.6-67.8)
2002	69.8 (69.0-70.6)	72.3 (71.6-72.9)	63.9 (62.7-65.1)
2003	68.2 (67.5-69.0)	70.6 (69.9-71.3)	62.6 (61.4-63.8)
2004 (Method 1 ¹)	68.6 (67.9-69.4)	70.9 (70.2-71.6)	63.1 (61.9-64.3)
2004 (Method 2 ¹)
2005	68.4 (67.66-69.20)	70.9 (70.18-71.58)	62.4 (61.18-63.54)
2006	66.5 (65.54-67.41)	69.2 (68.33-70.02)	59.7 (58.32-61.14)
2007	66.8 (65.76-67.85)	69.6 (68.64-70.47)	59.9 (58.25-61.48)
2008	65.4 (64.21-66.49)	68.1 (67.10-69.20)	58.3 (56.61-59.91)
2009	62.9 (61.86-63.99)	65.8 (64.83-66.69)	55.7 (54.02-57.38)
2010	61.2 (60.20-62.17)	64.1 (63.19-64.98)	53.8 (52.31-55.26)
2011	61.2 (60.16-62.15)	64.2 (63.34-65.09)	53.3 (51.84-54.81)
2012	61.0 (60.04-61.87)	64.1 (63.26-64.89)	52.8 (51.40-54.25)
2013	61.0 (60.02-62.04)	64.2 (63.33-65.17)	52.6 (51.10-54.09)
January–June 2014	62.8 (61.60-64.04)	66.7 (65.59-67.75)	52.6 (50.73-54.57)

...Category not applicable. See Footnote 1 for more information.

¹In the third quarter of 2004, two additional questions were added to the National Health Interview Survey (NHIS) insurance section to reduce potential errors in reporting Medicare and Medicaid status. Persons aged 65 and over not reporting Medicare coverage were asked explicitly about Medicare coverage, and persons under age 65 with no reported coverage were asked explicitly about Medicaid coverage. Depending on responses to these two questions, respondents may have been reclassified. Estimates of uninsurance for 2004 are calculated both without the additional information from these new questions (noted as Method 1) and with the responses to these new questions (noted as Method 2). In Table 1.1b, estimates of private insurance are not affected by the two additional questions. Beginning in 2005, all estimates are reported using Method 2. See Technical Notes for additional information.

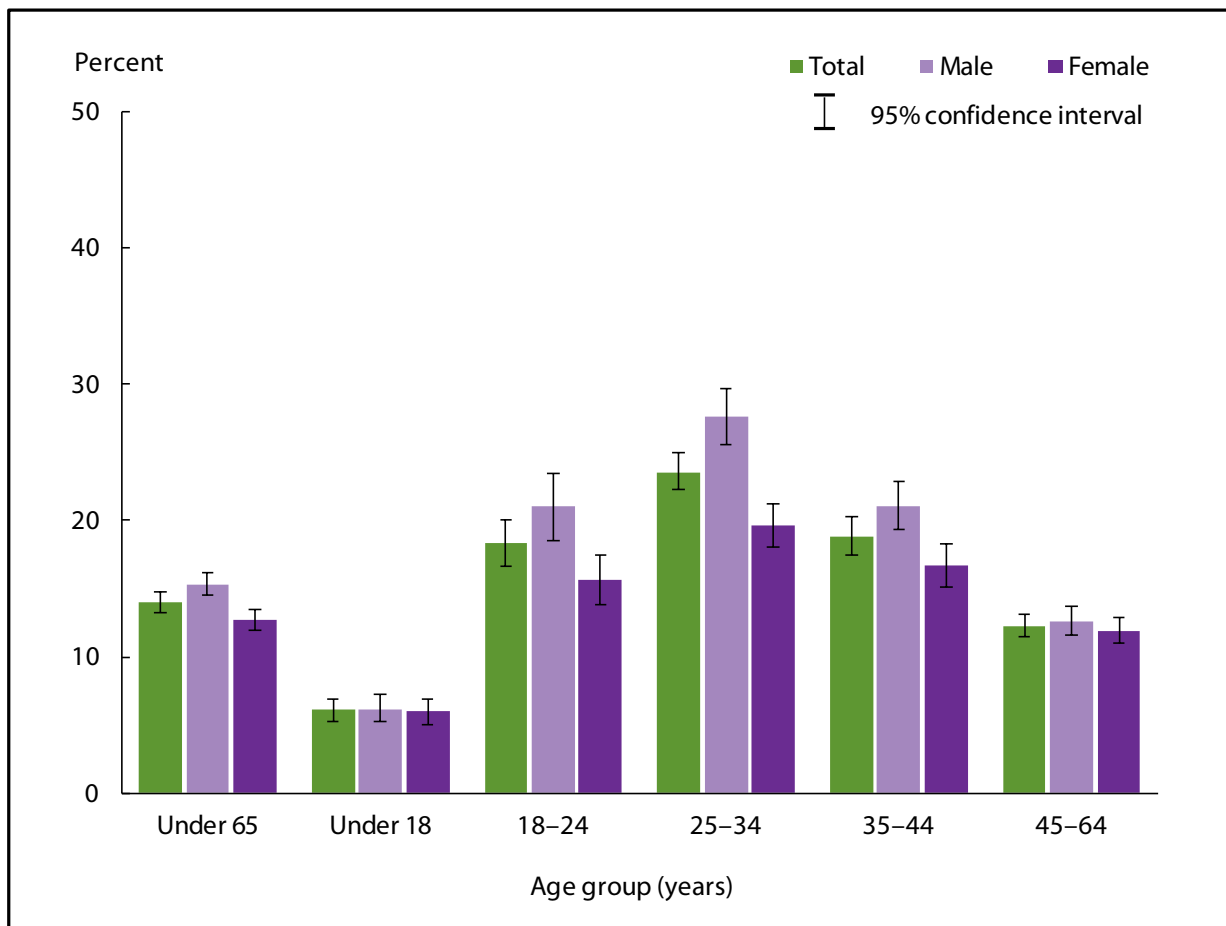
NOTES: Data are based on household interviews of a sample of the civilian noninstitutionalized population. In Table 1.2a, "Public health plan coverage" includes Medicare (disability), Medicaid, Children's Health Insurance Program (CHIP), state –sponsored or other government-sponsored health plan, and military plans. In Table 1.2b, "Private health insurance" includes persons who had any comprehensive private insurance plan (including health maintenance and preferred provider organizations). These plans include those obtained through an employer, purchased directly, or purchased through local or community programs. Private coverage excludes plans that pay for only one type of service such as accidents or dental care. The data on type of coverage were edited using an automated system based on logic checks

and keyword searches. For comparability, the estimates for all years were created using these same procedures. The resulting estimates of persons having public or private coverage are within 0.1–0.3 percentage points of those based on the editing procedures used for the final data files. The analyses excluded persons with unknown health insurance status (about 1% of respondents each year). See [Technical Notes](#) for more details.

DATA SOURCE: CDC/NCHS, National Health Interview Survey, 1997–June 2014, Family Core component.

- For January–June 2014, 24.5% of persons under age 65 were covered by public health plans (Table 1.2a) and 62.8% were covered by private health plans (Table 1.2b).
- Since 1997, public health insurance coverage rates were highest in January–June 2014 for adults aged 18–64 and for children aged 0–17 (Table 1.2a). However, the increase among adults was smaller than the increase among children.
- Since 1997, private health insurance coverage rates were lowest in 2013 and January–June 2014 for children aged 0–17; these rates were lowest in 2010 and in 2012 for adults aged 18–64 years (Table 1.2b).

Figure 1.2. Percentage of persons under age 65 without health insurance coverage at the time of interview, by age group and sex: United States, January–June 2014

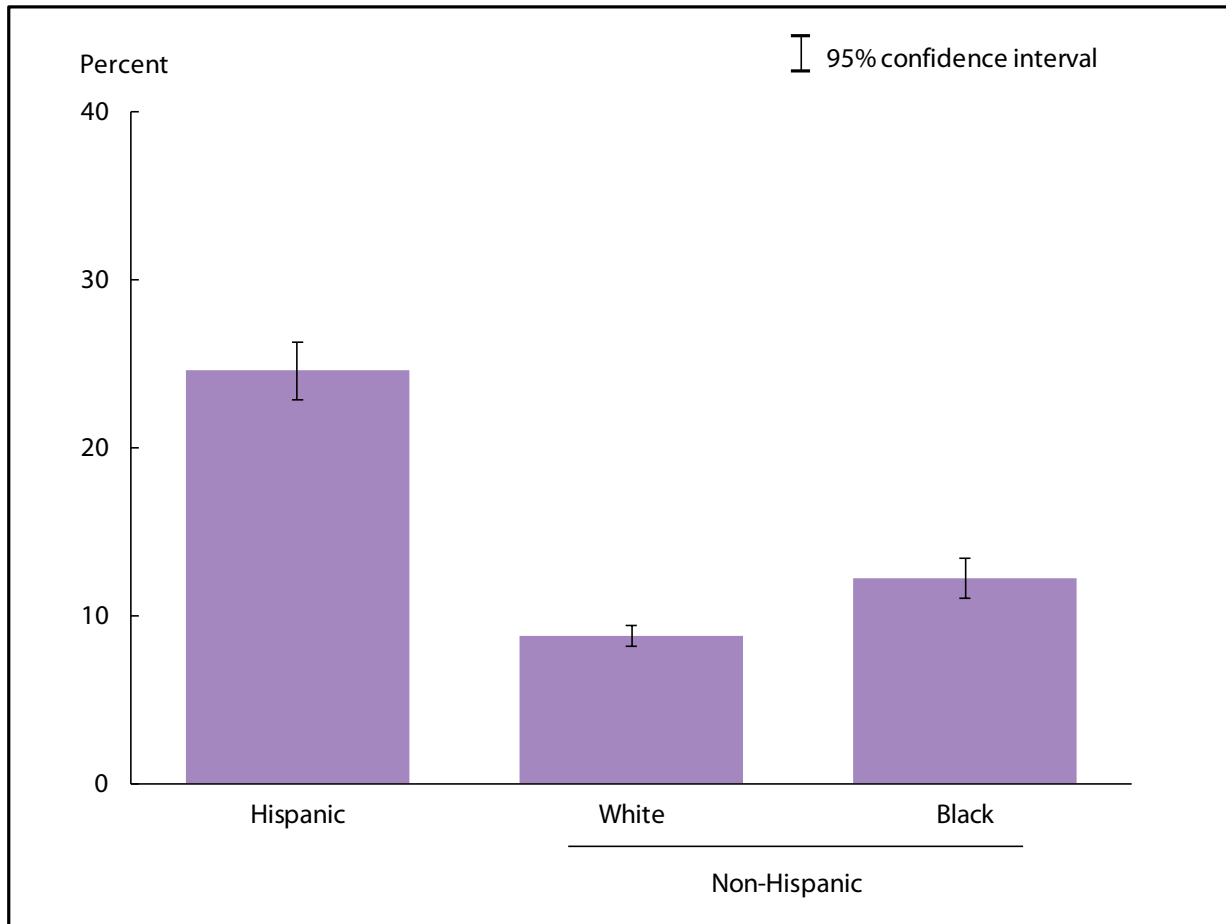


NOTES: Data are based on household interviews of a sample of the civilian noninstitutionalized population. A person was defined as uninsured if he or she did not have any private health insurance, Medicare, Medicaid, Children’s Health Insurance Program (CHIP), state-sponsored or other government-sponsored health plan, or military plan at the time of interview. A person was also defined as uninsured if he or she had only Indian Health Service coverage or had only a private plan that paid for one type of service, such as accidents or dental care. The data on health insurance status were edited using an automated system based on logic checks and keyword searches. The resulting estimates of persons not having health insurance coverage are generally 0.1–0.3 percentage points lower than those based on the editing procedures used for the final data files. The analyses excluded the 1.0% of persons with unknown health insurance status. See [Technical Notes](#) for more details.

DATA SOURCE: CDC/NCHS, National Health Interview Survey, January–June 2014, Family Core component.

- For both sexes combined under age 65, the percentage uninsured at the time of interview was highest among persons aged 25–34 (23.6%) and lowest among persons under age 18 (6.1%).
- Adults aged 25–34 were more likely than adults aged 18–24, 35–44, and 45–64 to lack health insurance coverage.
- For all persons under age 65 and for adults in age groups 18–24, 25–34, and 35–44, males were more likely than females to lack health insurance coverage at the time of interview.

Figure 1.3. Age–sex–adjusted percentage of persons of all ages without health insurance coverage at the time of interview, by race/ethnicity: United States, January–June 2014



NOTES: Data are based on household interviews of a sample of the civilian noninstitutionalized population. A person was defined as uninsured if he or she did not have any private health insurance, Medicare, Medicaid, Children’s Health Insurance Program (CHIP), state – sponsored or other government-sponsored health plan, or military plan at the time of interview. A person was also defined as uninsured if he or she had only Indian Health Service coverage or had only a private plan that paid for one type of service, such as accidents or dental care. The data on health insurance status were edited using an automated system based on logic checks and keyword searches. The resulting estimates of persons not having health insurance coverage are generally 0.1–0.3 percentage points lower than those based on the editing procedures used for the final data files. The analyses excluded the 1.0% of persons with unknown health insurance status. Estimates are age –sex adjusted using the projected 2000 U.S. population as the standard population and using three age groups: under 18, 18–64, and 65 and over. See [Technical Notes](#) for more details.

DATA SOURCE: CDC/NCHS, National Health Interview Survey, January–June 2014, Family Core component.

- After adjustment for age and sex, the percentage uninsured at the time of interview was 24.6% for Hispanic persons, 8.8% for non–Hispanic white persons, and 12.2% for non–Hispanic black persons.
- Hispanic persons were the most likely to be uninsured at the time of interview, followed by non–Hispanic black persons and non–Hispanic white persons.

Data tables for Figures 1.1–1.3:

Data table for Figure 1.1. Percentage of persons of all ages without health insurance coverage at the time of interview: United States, 1997–June 2014

Year	Percent	95% confidence interval
1997	15.4	15.0–15.8
1998	14.6	14.1–15.1
1999	14.2	13.8–14.6
2000	14.9	14.5–15.3
2001	14.3	13.8–14.8
2002	14.7	14.3–15.1
2003	15.2	14.8–15.7
2004 (Method 1 ¹)	14.7	14.3–15.2
2004 (Method 2 ¹)	14.6	14.2–15.0
2005	14.2	13.75–14.58
2006	14.8	14.34–15.34
2007	14.5	13.93–15.08
2008	14.7	14.04–15.27
2009	15.4	14.79–15.96
2010	16.0	15.46–16.52
2011	15.1	14.66–15.64
2012	14.7	14.29–15.21
2013	14.4	13.89–14.90
January–June 2014	12.2	11.52–12.79

¹In the third quarter of 2004, two additional questions were added to the National Health Interview Survey (NHIS) insurance section to reduce potential errors in reporting Medicare and Medicaid status. Persons aged 65 and over not reporting Medicare coverage were asked explicitly about Medicare coverage, and persons under age 65 with no reported coverage were asked explicitly about Medicaid coverage. Depending on responses to these two questions, respondents may have been reclassified. Estimates of uninsurance for 2004 are calculated both without the additional information from these new questions (noted as Method 1) and with the responses to these new questions (noted as Method 2). Beginning in 2005, all estimates are reported using Method 2. See [Technical Notes](#) for additional information.

NOTES: Data are based on household interviews of a sample of the civilian noninstitutionalized population. Beginning with the 2012 data, the National Health Interview Survey transitioned to weights derived from the 2010 census. For 2003–2011 data, weights were derived from the 2000 census. In this Early Release, estimates for 2000–2002 were recalculated using weights derived from the 2000 census. For 1997–1999 data, weights were derived from the 1990 census. See [Technical Notes](#) for more details.

DATA SOURCE: CDC/NCHS, National Health Interview Survey, 1997–June 2014, Family Core component.

Data table for Figure 1.2. Percentage of persons under age 65 without health insurance coverage at the time of interview, by age group and sex: United States, January–June 2014

Age (years) and sex	Percent	95% confidence interval
Under 18, total	6.1	5.29-6.96
Under 18, male	6.2	5.27-7.23
Under 18, female	6.0	5.07-6.93
18–24, total	18.3	16.62-20.05
18–24, male	21.0	18.54-23.47
18–24, female	15.7	13.89-17.46
25–34, total	23.6	22.23-24.92
25–34, male	27.6	25.55-29.67
25–34, female	19.6	18.11-21.17
35–44, total	18.9	17.45-20.28
35–44, male	21.1	19.30-22.84
35–44, female	16.8	15.16-18.35
45–64, total	12.3	11.50-13.12
45–64, male	12.6	11.59-13.70
45–64, female	12.0	11.07-12.92
Under 65 (crude ¹), total	14.0	13.29-14.75
Under 65 (crude ¹), male	15.3	14.50-16.19
Under 65 (crude ¹), female	12.7	11.95-13.49
Under 65 (age-adjusted ²), total	14.2	13.42-14.92
Under 65 (age-adjusted ²), male	15.6	14.79-16.51
Under 65 (age-adjusted ²), female	12.7	11.94-13.52

¹Crude estimates are presented in the figure and are similar to those used to monitor the related Healthy People 2020 Leading Health Indicator—proportion of persons with health insurance.

²Estimates are age adjusted using the projected 2000 U.S. population as the standard population and using three age groups: under 18, 18–44, and 45–64.

NOTE: Data are based on household interviews of a sample of the civilian noninstitutionalized population.

DATA SOURCE: CDC/NCHS, National Health Interview Survey, January–June 2014, Family Core component.

Data table for Figure 1.3. Age-sex-adjusted percentage of persons of all ages without health insurance coverage at the time of interview, by race/ethnicity: United States, January–June 2014

Race/ethnicity	Age-sex-adjusted ¹ percent (95% confidence interval)	Age-adjusted ² percent (95% confidence interval)
Hispanic or Latino	24.6 (22.82-26.30)	24.4 (22.67-26.05)
Not Hispanic or Latino, single race, white	8.8 (8.18-9.39)	9.2 (8.55-9.81)
Not Hispanic or Latino, single race, black	12.2 (11.07-13.39)	12.4 (11.22-13.55)

¹Age-sex-adjusted estimates are presented in the figure. Estimates are age-sex adjusted using the projected 2000 U.S. population as the standard population and using three age groups: under 18, 18–64, and 65 and over.

²Estimates for this Healthy People 2020 Leading Health Indicator are age adjusted using the projected 2000 U.S. population as the standard population and using four age groups: under 18, 18–44, 45–64, and 65 and over.

NOTE: Data are based on household interviews of a sample of the civilian noninstitutionalized population.

DATA SOURCE: CDC/NCHS, National Health Interview Survey, January–June 2014, Family Core component.