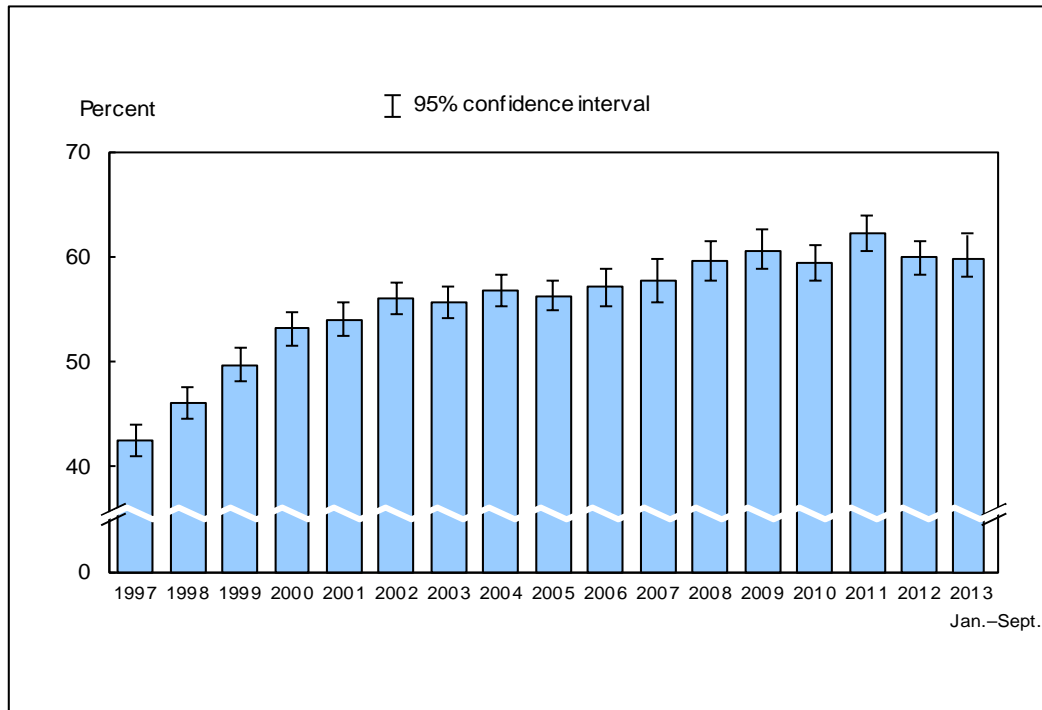


**Figure 5.1. Percentage of adults aged 65 and over who had ever received a pneumococcal vaccination: United States, 1997–September 2013**

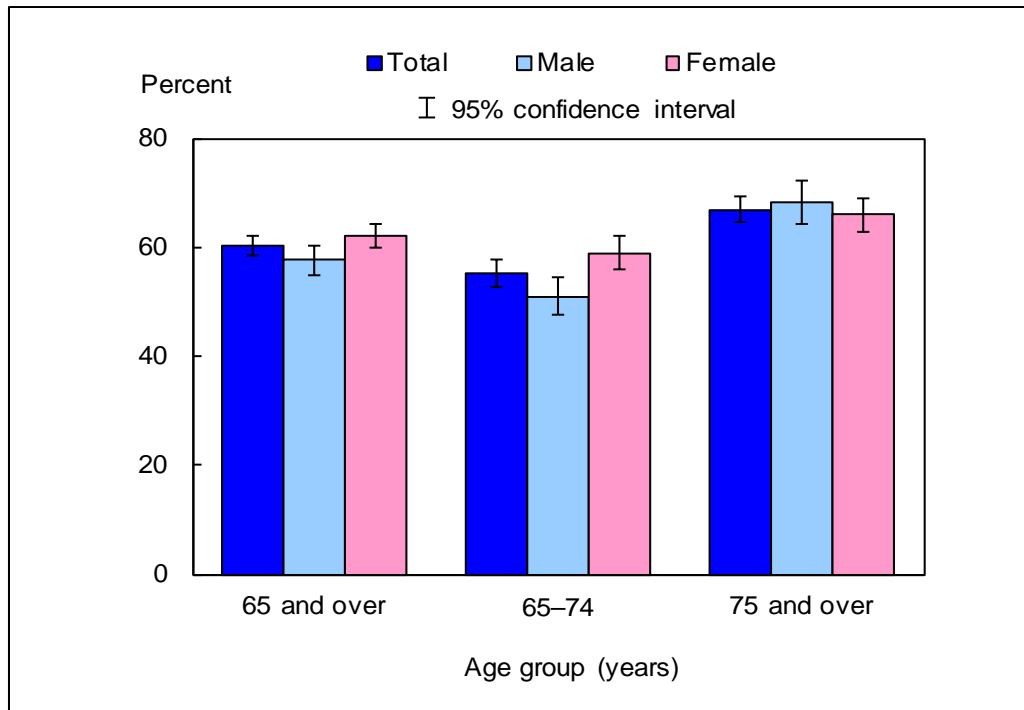


DATA SOURCE: CDC/NCHS, National Health Interview Survey, 1997–September 2013, Sample Adult Core component.

- For January–September 2013, the percentage of adults aged 65 and over who had ever received a pneumococcal vaccination was 60.2% (95% confidence interval = 58.35%–61.95%), which was not significantly different from the 2012 estimate of 59.9%.
- The percentage of adults aged 65 and over who had ever received a pneumococcal vaccination increased rapidly from 42.4% in 1997 to 53.1% in 2000, then increased more slowly to 62.3% in 2011.

NOTES: Data are based on household interviews of a sample of the civilian noninstitutionalized population. • The analyses excluded those with unknown pneumococcal vaccination status (about 5% of respondents each year). • See [Technical Notes](#) for more details.

**Figure 5.2. Percentage of adults aged 65 and over who had ever received a pneumococcal vaccination, by age group and sex: United States, January–September 2013**

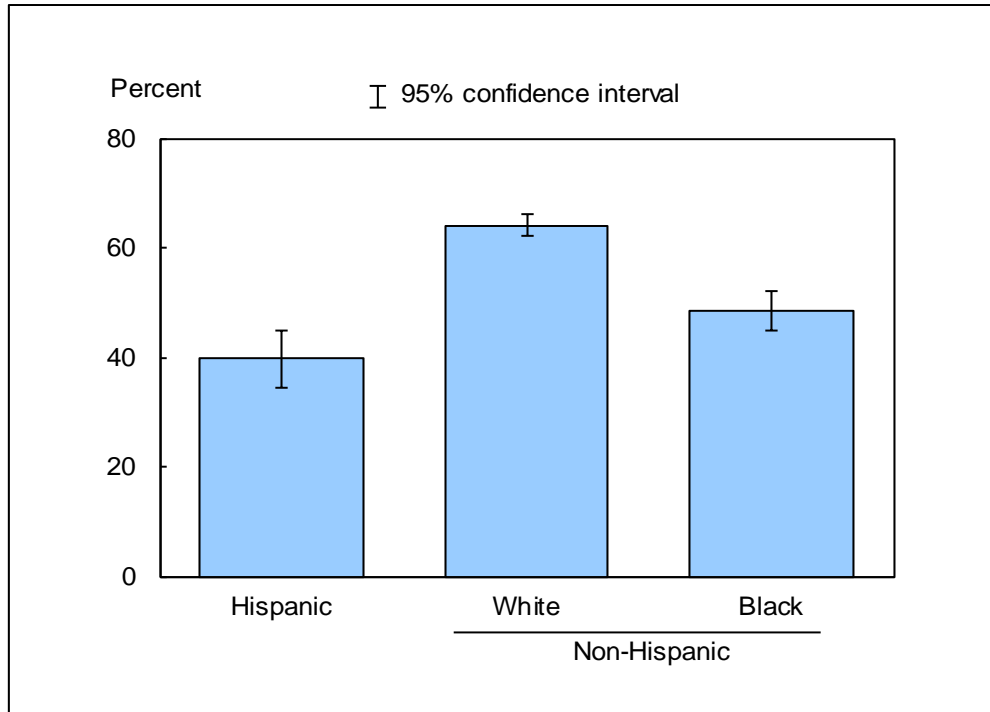


DATA SOURCE: CDC/NCHS, National Health Interview Survey, January–September 2013, Sample Adult Core component.

- For both sexes combined, the percentage of adults who had ever received a pneumococcal vaccination was 55.2% for persons aged 65–74 and 66.9% for persons aged 75 and over.
- For both sexes combined, adults aged 75 and over were more likely than those aged 65–74 to have ever received a pneumococcal vaccination. This pattern was seen in both men and women.
- For adults aged 65–74, women were more likely than men to have ever received a pneumococcal vaccination.

NOTES: Data are based on household interviews of a sample of the civilian noninstitutionalized population. • The analyses excluded the 3.9% of adults aged 65 and over with unknown pneumococcal vaccination status. • See [Technical Notes](#) for more details.

**Figure 5.3. Percentage of adults aged 65 and over who had ever received a pneumococcal vaccination, by race/ethnicity: United States, January–September 2013**



DATA SOURCE: CDC/NCHS, National Health Interview Survey, January–September 2013, Sample Adult Core component.

- The percentage of adults aged 65 and over who had ever received a pneumococcal vaccination was 39.7% for Hispanic persons, 64.1% for non-Hispanic white persons, and 48.3% for non-Hispanic black persons.
- Of the three race/ethnicity groups, non-Hispanic white adults were the most likely to have ever received a pneumococcal vaccination, followed by non-Hispanic black adults and then Hispanic adults.

NOTES: Data are based on household interviews of a sample of the civilian noninstitutionalized population. • The analyses excluded the 3.9% of adults aged 65 and over with unknown pneumococcal vaccination status. • See [Technical Notes](#) for more details.

## Data tables for Figures 5.1–5.3:

### Data table for Figure 5.1. Percentage of adults aged 65 and over who had ever received a pneumococcal vaccination: United States, 1997–September 2013

| Year                   | Crude <sup>1</sup> percent<br>(95% confidence interval) | Age-adjusted <sup>2</sup> percent<br>(95% confidence interval) |
|------------------------|---|--|
| 1997                   | 42.4 (40.9–43.9)  | 42.6 (41.1–44.1)   |
| 1998                   | 46.0 (44.5–47.5)  | 46.3 (44.8–47.8)   |
| 1999                   | 49.7 (48.1–51.3)  | 49.9 (48.3–51.5)   |
| 2000                   | 53.1 (51.5–54.7)  | 53.4 (51.8–55.0)   |
| 2001                   | 54.0 (52.4–55.6)  | 54.2 (52.6–55.7)   |
| 2002                   | 56.0 (54.5–57.5)  | 56.2 (54.8–57.7)   |
| 2003                   | 55.6 (54.1–57.1)  | 55.7 (54.2–57.1)   |
| 2004                   | 56.8 (55.3–58.3)  | 57.0 (55.5–58.5)   |
| 2005                   | 56.2 (54.82–57.64)                                      | 56.3 (54.95–57.72)   |
| 2006                   | 57.1 (55.25–58.88)                                      | 57.2 (55.43–59.04)   |
| 2007                   | 57.7 (55.68–59.69)                                      | 57.8 (55.78–59.80)   |
| 2008                   | 59.6 (57.68–61.48)                                      | 59.8 (57.98–61.64)   |
| 2009                   | 60.6 (58.74–62.51)                                      | 61.0 (59.15–62.79)   |
| 2010                   | 59.4 (57.61–61.17)                                      | 59.8 (58.02–61.51)   |
| 2011                   | 62.3 (60.55–63.95)                                      | 62.7 (61.04–64.31)   |
| 2012                   | 59.9 (58.29–61.49)                                      | 60.4 (58.86–62.01)   |
| January–September 2013 | 60.2 (58.35–61.95)                                      | 60.8 (59.04–62.58)   |

<sup>1</sup>Crude estimates are presented in the figure.

<sup>2</sup>Estimates are age adjusted using the projected 2000 U.S. population as the standard population and using two age groups: 65–74 and 75 and over.

NOTES: Data are based on household interviews of a sample of the civilian noninstitutionalized population. Beginning with the 2012 data, the National Health Interview Survey transitioned to weights derived from the 2010 census. For 2003–2011 data, weights were derived from the 2000 census. In this Early Release, estimates for 2000–2002 were recalculated using weights derived from the 2000 census. For 1997–1999 data, weights were derived from the 1990 census. See [Technical Notes](#) for more details.

DATA SOURCE: CDC/NCHS, National Health Interview Survey, 1997–September 2013, Sample Adult Core component.

**Data table for Figure 5.2. Percentage of adults aged 65 and over who had ever received a pneumococcal vaccination, by age group and sex: United States, January–September 2013**

| Age (years) and sex                              | Percent | 95% confidence interval |
|--|---------|-------------------------|
| 65–74, total                                     | 55.2    | 52.82–57.67             |
| 65–74, male                                      | 51.0    | 47.43–54.49             |
| 65–74, female                                    | 59.0    | 56.09–61.92             |
| 75 and over, total                               | 66.9    | 64.50–69.30             |
| 75 and over, male                                | 68.3    | 64.42–72.20             |
| 75 and over, female                              | 65.9    | 62.88–69.00             |
| 65 and over (crude <sup>1</sup> ), total         | 60.2    | 58.35–61.95             |
| 65 and over (crude <sup>1</sup> ), male          | 57.7    | 54.94–60.40             |
| 65 and over (crude <sup>1</sup> ), female        | 62.1    | 59.92–64.30             |
| 65 and over (age-adjusted <sup>2</sup> ), total  | 60.8    | 59.04–62.58             |
| 65 and over (age-adjusted <sup>2</sup> ), male   | 59.2    | 56.57–61.91             |
| 65 and over (age-adjusted <sup>2</sup> ), female | 62.3    | 60.13–64.50             |

<sup>1</sup>Crude estimates are presented in the figure.

<sup>2</sup>Estimates are age adjusted using the projected 2000 U.S. population as the standard population and using two age groups: 65–74 and 75 and over.

NOTE: Data are based on household interviews of a sample of the civilian noninstitutionalized population.

DATA SOURCE: CDC/NCHS, National Health Interview Survey, January–September 2013, Sample Adult Core component.

**Data table for Figure 5.3. Percentage of adults aged 65 and over who had ever received a pneumococcal vaccination, by race/ethnicity: United States, January–September 2013**

| Race/ethnicity                                | Crude <sup>1</sup> percent<br>(95% confidence interval) | Age-adjusted <sup>2</sup> percent<br>(95% confidence interval) |
|---|---|--|
| Hispanic or Latino                            | 39.7 (34.39–44.98)                                      | 40.5 (34.98–46.09)   |
| Not Hispanic or Latino,<br>single race, white | 64.1 (62.08–66.14)                                      | 64.7 (62.70–66.71)   |
| Not Hispanic or Latino,<br>single race, black | 48.3 (44.72–51.97)                                      | 48.1 (44.43–51.78)   |

<sup>1</sup>Crude estimates are presented in the figure.

<sup>2</sup>Estimates are age adjusted using the projected 2000 U.S. population as the standard population and using two age groups: 65–74 and 75 and over.

NOTE: Data are based on household interviews of a sample of the civilian noninstitutionalized population.

DATA SOURCE: CDC/NCHS, National Health Interview Survey, January–September 2013, Sample Adult Core component.