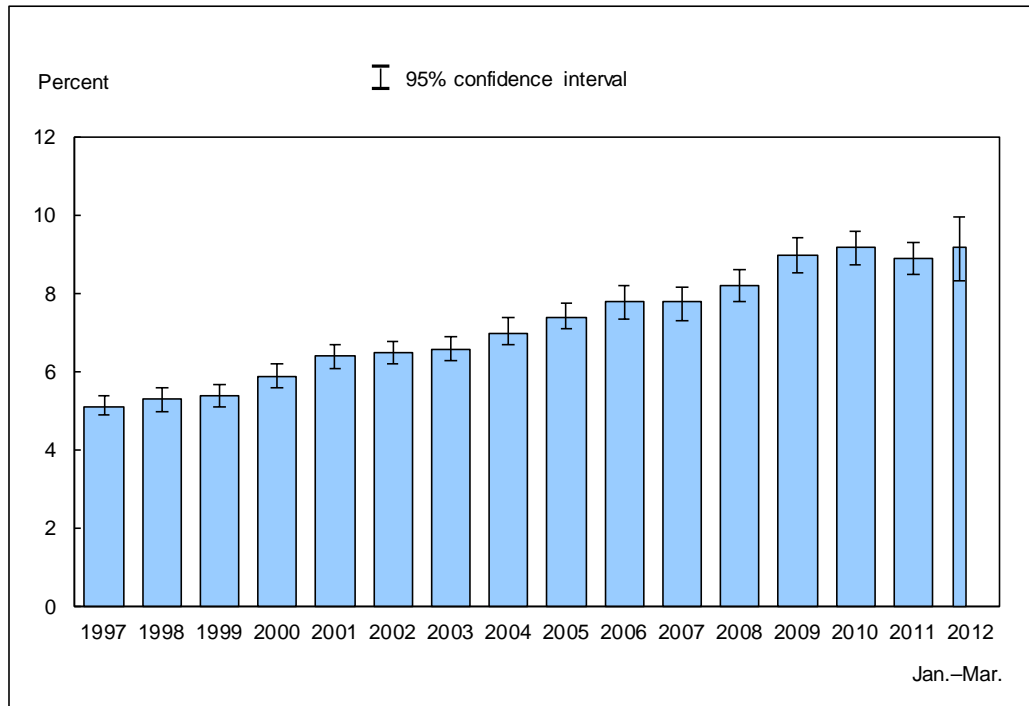


Figure 14.1. Prevalence of diagnosed diabetes among adults aged 18 and over: United States, 1997–March 2012

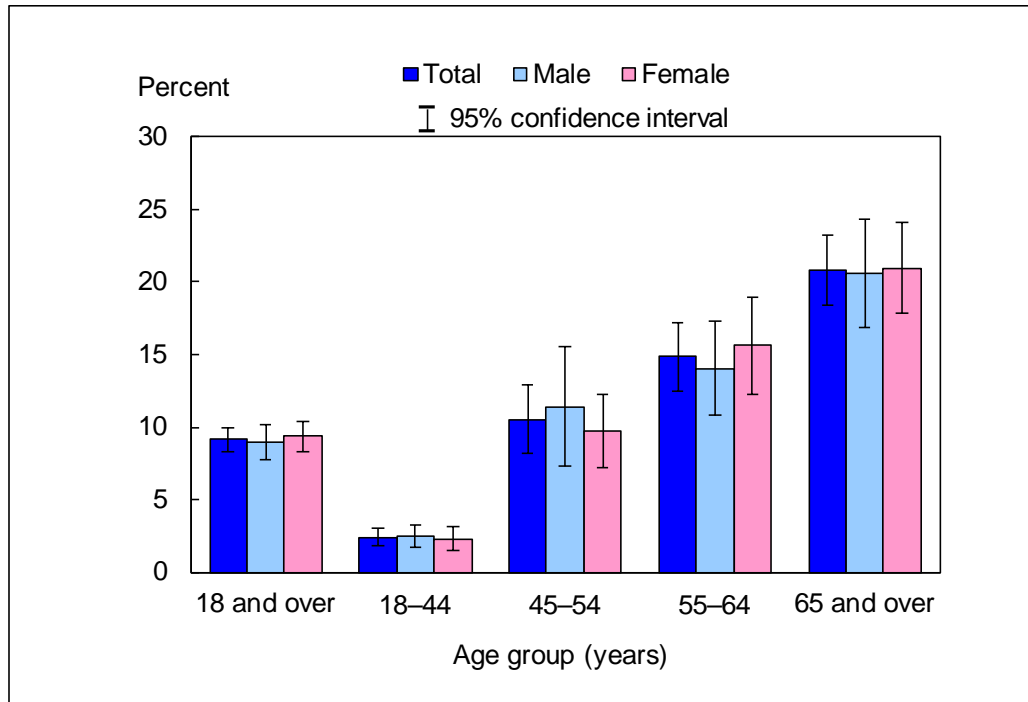


DATA SOURCE: CDC/NCHS, National Health Interview Survey, 1997–March 2012, Sample Adult Core component.

- In early 2012, 9.2% (95% confidence interval = 8.35%–10.04%) of adults aged 18 and over had ever been diagnosed as having diabetes, which was not significantly different from the 2011 estimate of 8.9%.
- The prevalence of diagnosed diabetes among adults aged 18 and over increased from 5.1% in 1997 to 9.2% in 2010 and early 2012.

NOTES: Data are based on household interviews of a sample of the civilian noninstitutionalized population. • Prevalence of diagnosed diabetes is based on self-report of ever having been diagnosed with diabetes by a doctor or other health professional. Persons reporting “borderline” diabetes status and women reporting diabetes only during pregnancy were not coded as having diabetes in the analyses. • The analyses excluded persons with unknown diabetes status (about 0.1% of respondents each year). • See [Technical Notes](#) for more details.

Figure 14.2. Prevalence of diagnosed diabetes among adults aged 18 and over, by age group and sex: United States, January–March 2012

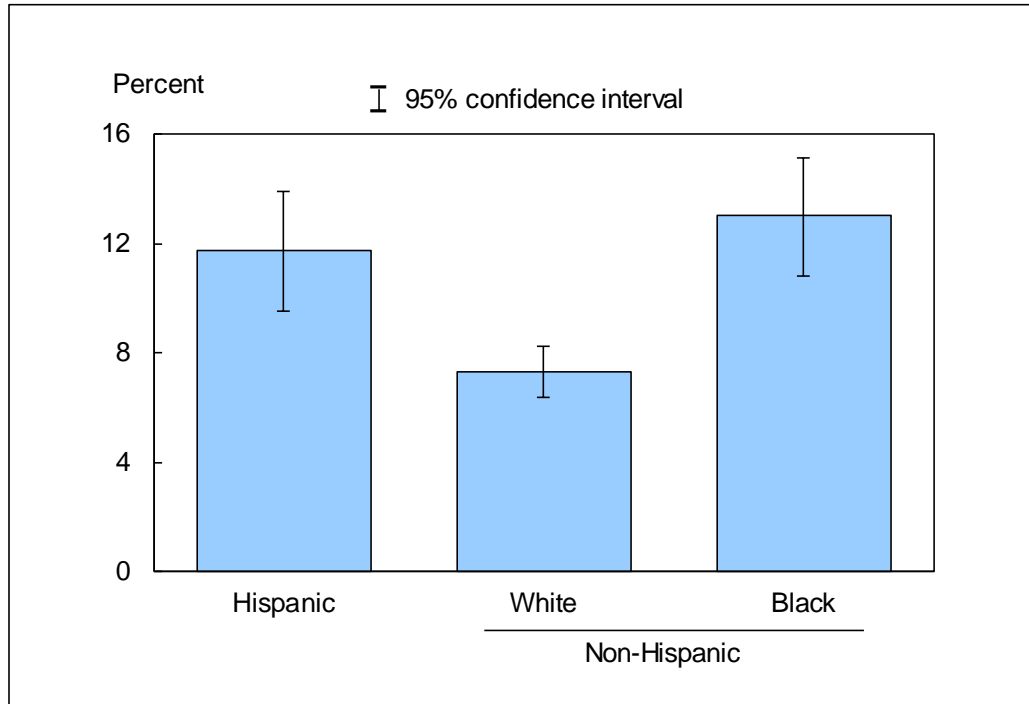


DATA SOURCE: CDC/NCHS, National Health Interview Survey, January–March 2012, Sample Adult Core component.

- For both sexes combined, the prevalence of diagnosed diabetes increased with age. Adults aged 65 and over (20.8%) were more than eight times as likely as adults aged 18–44 (2.4%) to have been diagnosed with diabetes.
- For all four age groups, there was no significant difference in the prevalence of diagnosed diabetes between men and women.

NOTES: Data are based on household interviews of a sample of the civilian noninstitutionalized population. • Prevalence of diagnosed diabetes is based on self-report of ever having been diagnosed with diabetes by a doctor or other health professional. Persons reporting “borderline” diabetes status and women reporting diabetes only during pregnancy were not coded as having diabetes in the analyses. • The analyses excluded 0.1% of persons with unknown diabetes status. • See [Technical Notes](#) for more details.

Figure 14.3. Age-sex-adjusted prevalence of diagnosed diabetes among adults aged 18 and over, by race/ethnicity: United States, January–March 2012



DATA SOURCE: CDC/NCHS, National Health Interview Survey, January–March 2012, Sample Adult Core component.

- The age-sex-adjusted prevalence of diagnosed diabetes was 11.7% for Hispanic persons, 7.3% for non-Hispanic white persons, and 13.0% for non-Hispanic black persons.
- The prevalence of diagnosed diabetes was lower among non-Hispanic white persons than among Hispanic persons and non-Hispanic black persons.

NOTES: Data are based on household interviews of a sample of the civilian noninstitutionalized population. • Prevalence of diagnosed diabetes is based on self-report of ever having been diagnosed with diabetes by a doctor or other health professional. Persons reporting “borderline” diabetes status and women reporting diabetes only during pregnancy were not coded as having diabetes in the analyses. • The analyses excluded 0.1% of persons with unknown diabetes status. • Estimates are age-sex adjusted using the projected 2000 U.S. population as the standard population and using four age groups: 18–44, 45–54, 55–64, and 65 and over. • See [Technical Notes](#) for more details.

Data tables for Figures 14.1–14.3:

Data table for Figure 14.1. Prevalence of diagnosed diabetes among adults aged 18 and over: United States, 1997–March 2012

Year	Crude ¹ percent (95% confidence interval)	Age-adjusted ² percent (95% confidence interval)
1997	5.1 (4.9-5.4)	5.3 (5.1-5.6)
1998	5.3 (5.0-5.6)	5.4 (5.1-5.7)
1999	5.4 (5.1-5.7)	5.5 (5.2-5.8)
2000	5.9 (5.6-6.2)	6.0 (5.7-6.3)
2001	6.4 (6.1-6.7)	6.4 (6.1-6.7)
2002	6.5 (6.2-6.8)	6.5 (6.2-6.8)
2003	6.6 (6.3-6.9)	6.5 (6.2-6.9)
2004	7.0 (6.7-7.4)	6.9 (6.6-7.3)
2005	7.4 (7.10-7.78)	7.3 (6.95-7.57)
2006	7.8 (7.35-8.20)	7.6 (7.15-7.96)
2007	7.8 (7.33-8.18)	7.5 (7.08-7.87)
2008	8.2 (7.81-8.64)	7.8 (7.43-8.19)
2009	9.0 (8.54-9.45)	8.5 (8.09-8.93)
2010	9.2 (8.73-9.59)	8.6 (8.21-8.97)
2011	8.9 (8.51-9.30)	8.3 (7.90-8.61)
January–March 2012	9.2 (8.35-10.04)	8.5 (7.73-9.22)

¹Crude estimates are presented in the figure.

²Estimates are age adjusted using the projected 2000 U.S. population as the standard population and using four age groups: 18–44, 45–54, 55–64, and 65 and over.

NOTES: Data are based on household interviews of a sample of the civilian noninstitutionalized population. Beginning with the 2003 data, the National Health Interview Survey transitioned to weights derived from the 2000 census. In this Early Release, estimates for 2000–2002 were recalculated using weights derived from the 2000 census. See [Technical Notes](#) for more details.

DATA SOURCE: CDC/NCHS, National Health Interview Survey, 1997–March 2012, Sample Adult Core component.

Data table for Figure 14.2. Prevalence of diagnosed diabetes among adults aged 18 and over, by age group and sex: United States, January–March 2012

Age (years) and sex	Percent	95% confidence interval
18-44, total	2.4	1.81-3.00
18-44, male	2.5	1.72-3.30
18-44, female	2.3	1.47-3.14
45-54, total	10.5	8.21-12.87
45-54, male	11.4	7.30-15.51
45-54, female	9.7	7.18-12.27
55-64, total	14.9	12.52-17.19
55-64, male	14.0	10.80-17.27
55-64, female	15.6	12.31-18.93
65 and over, total	20.8	18.35-23.26
65 and over, male	20.6	16.86-24.34
65 and over, female	21.0	17.84-24.10
18 and over (crude ¹), total	9.2	8.35-10.04
18 and over (crude ¹), male	9.0	7.75-10.21
18 and over (crude ¹), female	9.4	8.33-10.45
18 and over (age-adjusted ²), total	8.5	7.73-9.22
18 and over (age-adjusted ²), male	8.6	7.43-9.69
18 and over (age-adjusted ²), female	8.4	7.48-9.31

¹Crude estimates are presented in the figure.

²Estimates are age adjusted using the projected 2000 U.S. population as the standard population and using four age groups: 18–44, 45–54, 55–64, and 65 and over.

NOTE: Data are based on household interviews of a sample of the civilian noninstitutionalized population.

DATA SOURCE: CDC/NCHS, National Health Interview Survey, January–March 2012, Sample Adult Core component.

Data table for Figure 14.3. Age-sex-adjusted prevalence of diagnosed diabetes among adults aged 18 and over, by race/ethnicity: United States, January–March 2012

Race/ethnicity	Percent ¹	95% confidence interval
Hispanic or Latino	11.7	9.55-13.91
Not Hispanic or Latino, single race, white	7.3	6.39-8.24
Not Hispanic or Latino, single race, black	13.0	10.87-15.13

¹Estimates are age-sex adjusted using the projected 2000 U.S. population as the standard population and using four age groups: 18–44, 45–54, 55–64, and 65 and over.

NOTE: Data are based on household interviews of a sample of the civilian noninstitutionalized population.

DATA SOURCE: CDC/NCHS, National Health Interview Survey, January–March 2012, Sample Adult Core component.