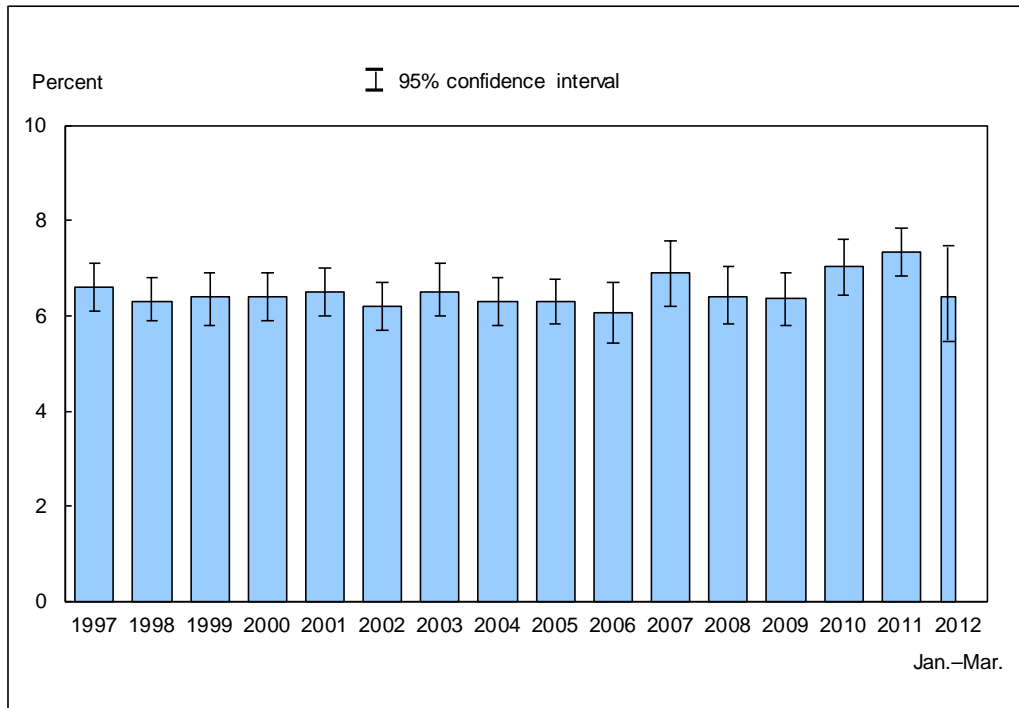


Figure 12.1. Percentage of adults aged 65 and over who need help with personal care from other persons: United States, 1997–March 2012

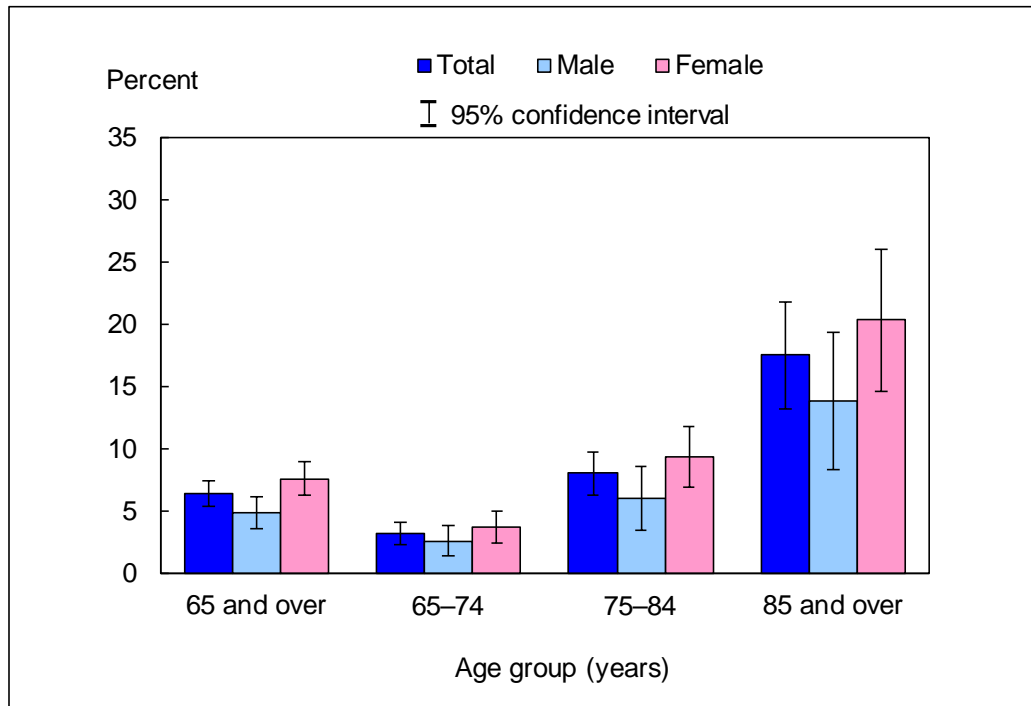


DATA SOURCE: CDC/NCHS, National Health Interview Survey, 1997–March 2012, Family Core component.

- In early 2012, 6.5% (95% confidence interval = 5.47%–7.44%) of adults aged 65 and over needed help with personal care from other persons. This estimate was lower than, but not significantly different from, the 2011 estimate of 7.3%.
- The percentage of older adults who needed help with personal care from other persons was lowest in 2006 (6.1%) and highest in 2011 (7.3%).

NOTES: Data are based on household interviews of a sample of the civilian noninstitutionalized population. • Personal care needs, or activities of daily living (ADLs), include eating, bathing, dressing, and getting around inside the person's home. • The analyses excluded persons with unknown information on personal care needs (about <0.1% of respondents each year). • See [Technical Notes](#) for more details.

Figure 12.2. Percentage of adults aged 65 and over who need help with personal care from other persons, by age group and sex: United States, January–March 2012

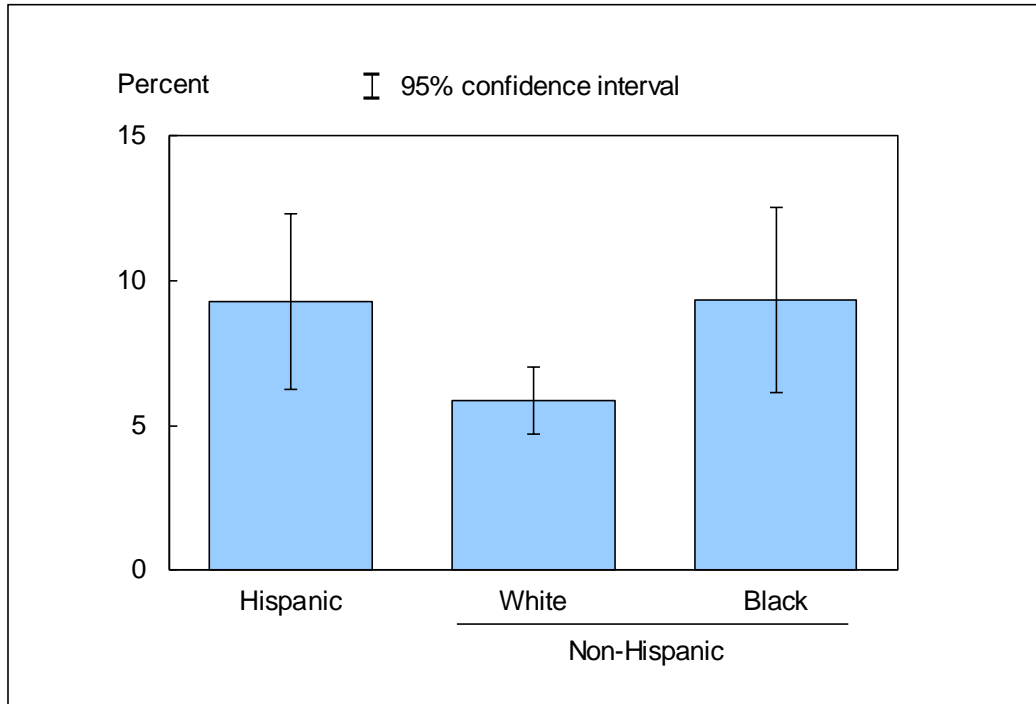


DATA SOURCE: CDC/NCHS, National Health Interview Survey, January–March 2012, Family Core component.

- For both sexes combined, adults aged 85 and over (17.5%) were more than five times as likely as adults aged 65–74 (3.2%) to need help with personal care from other persons.
- For all three age groups, there was no significant difference between men and women in needing help with personal care from other persons.

NOTES: Data are based on household interviews of a sample of the civilian noninstitutionalized population. • Personal care needs, or activities of daily living (ADLs), include eating, bathing, dressing, and getting around inside the person’s home. • See [Technical Notes](#) for more details.

Figure 12.3. Age-sex-adjusted percentage of adults aged 65 and over who need help with personal care from other persons, by race/ethnicity: United States, January–March 2012



DATA SOURCE: CDC/NCHS, National Health Interview Survey, January–March 2012, Family Core component.

- The age-sex-adjusted percentage of persons who needed help with personal care from other persons was 9.3% for Hispanic persons, 5.8% for non-Hispanic white persons, and 9.3% for non-Hispanic black persons.
- Non-Hispanic white persons were less likely to need help with personal care from other persons than were Hispanic persons and non-Hispanic black persons.

NOTES: Data are based on household interviews of a sample of the civilian noninstitutionalized population. • Personal care needs, or activities of daily living (ADLs), include eating, bathing, dressing, and getting around inside the person’s home. • Estimates are age-sex adjusted using the projected 2000 U.S. population as the standard population and using three age groups: 65–74, 75–84, and 85 and over. • See [Technical Notes](#) for more details.

Data tables for Figures 12.1–12.3:

Data table for Figure 12.1. Percentage of adults aged 65 and over who need help with personal care from other persons: United States, 1997–March 2012

Year	Percent	95% confidence interval
1997	6.6	6.1-7.1
1998	6.3	5.9-6.8
1999	6.4	5.8-6.9
2000	6.4	5.9-6.9
2001	6.5	6.0-7.0
2002	6.2	5.7-6.7
2003	6.5	6.0-7.1
2004	6.3	5.8-6.8
2005	6.3	5.83-6.76
2006	6.1	5.44-6.69
2007	6.9	6.21-7.58
2008	6.4	5.84-7.03
2009	6.4	5.80-6.92
2010	7.0	6.43-7.62
2011	7.3	6.83-7.84
January–March 2012	6.5	5.47-7.44

NOTES: Data are based on household interviews of a sample of the civilian noninstitutionalized population. Beginning with the 2003 data, the National Health Interview Survey transitioned to weights derived from the 2000 census. In this Early Release, estimates for 2000–2002 were recalculated using weights derived from the 2000 census. See [Technical Notes](#) for more details.

DATA SOURCE: CDC/NCHS, National Health Interview Survey, 1997–March 2012, Family Core component.

Data table for Figure 12.2. Percentage of adults aged 65 and over who need help with personal care from other persons, by age group and sex: United States, January–March 2012

Age (years) and sex	Percent	95% confidence interval
65-74, total	3.2	2.37-4.09
65-74, male	2.6	1.42-3.85
65-74, female	3.7	2.51-4.98
75-84, total	8.1	6.35-9.83
75-84, male	6.1	3.54-8.64
75-84, female	9.4	6.93-11.78
85 and over, total	17.5	13.21-21.88
85 and over, male	13.9	8.41-19.34
85 and over, female	20.4	14.70-26.09
65 and over (crude ¹), total	6.5	5.47-7.44
65 and over (crude ¹), male	4.9	3.66-6.18
65 and over (crude ¹), female	7.7	6.28-9.02
65 and over (age-adjusted ²), total	6.7	5.73-7.68
65 and over (age-adjusted ²), male	5.2	3.92-6.56
65 and over (age-adjusted ²), female	7.8	6.46-9.10

¹Crude estimates are presented in the figure.

²Estimates are age adjusted using the projected 2000 U.S. population as the standard population and using three age groups: 65–74, 75–84, and 85 and over.

NOTE: Data are based on household interviews of a sample of the civilian noninstitutionalized population.

DATA SOURCE: CDC/NCHS, National Health Interview Survey, January–March 2012, Family Core component.

Data table for Figure 12.3. Age-sex-adjusted percentage of adults aged 65 and over who need help with personal care from other persons, by race/ethnicity: United States, January–March 2012

Race/ethnicity	Percent ¹	95% confidence interval
Hispanic or Latino	9.3	6.27-12.34
Not Hispanic or Latino, single race, white	5.8	4.68-7.00
Not Hispanic or Latino, single race, black	9.3	6.12-12.52

¹Estimates are age-sex adjusted using the projected 2000 U.S. population as the standard population and using three age groups: 65–74, 75–84, and 85 and over.

NOTE: Data are based on household interviews of a sample of the civilian noninstitutionalized population.

DATA SOURCE: CDC/NCHS, National Health Interview Survey, January–March 2012, Family Core component.