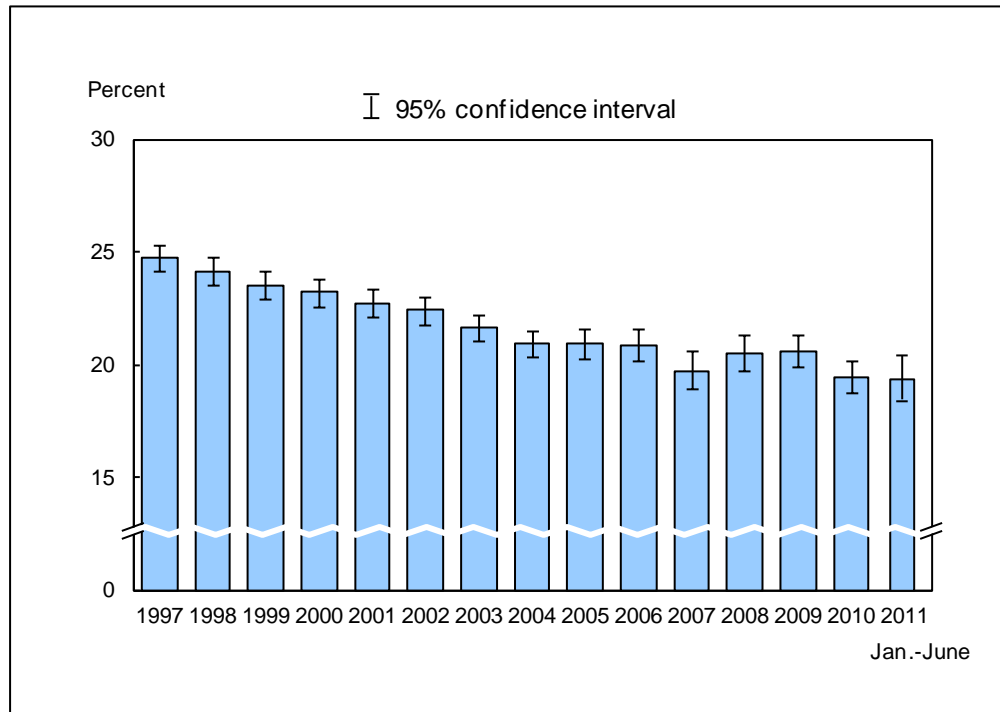


Figure 8.1. Prevalence of current smoking among adults aged 18 years and over: United States, 1997–June 2011

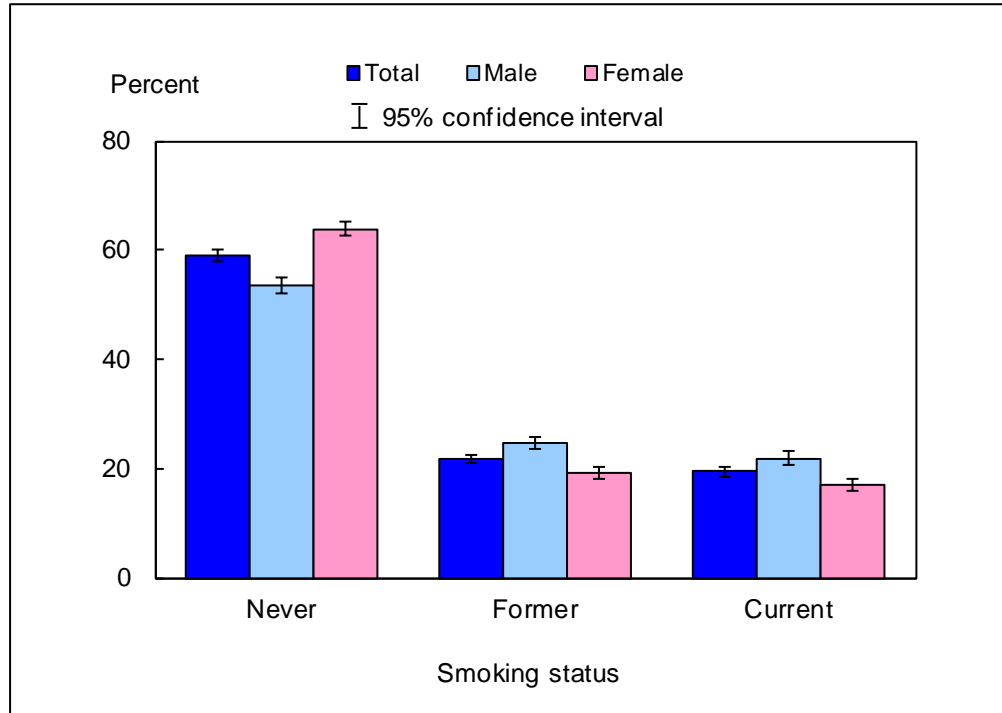


DATA SOURCE: CDC/NCHS, National Health Interview Survey, 1997–June 2011, Sample Adult Core component.

- For January–June 2011, the percentage of adults aged 18 and over who were current smokers was 19.4% (95% confidence interval = 18.43%–20.31%), which was the same as the 2010 estimate.
- The prevalence of current smoking among U.S. adults generally declined from 24.7% in 1997 to 19.4% for 2011.

NOTES: Data are based on household interviews of a sample of the civilian noninstitutionalized population. • Current smokers were defined as those who had smoked more than 100 cigarettes in their lifetime and now smoke every day or some days. • The analyses excluded persons with unknown smoking status (about 2% of respondents each year). • See "[Technical Notes](#)" for more details.

Figure 8.2. Percent distribution of smoking status among adults aged 18 years and over, by sex: United States, January–June 2011

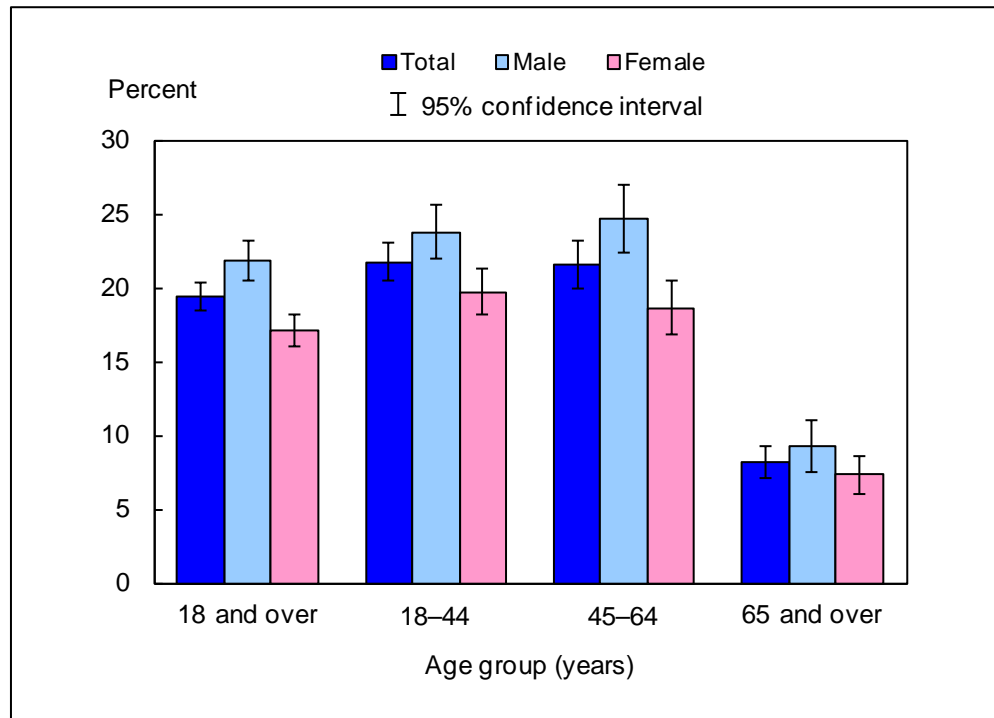


DATA SOURCE: CDC/NCHS, National Health Interview Survey, January–June 2011, Sample Adult Core component.

- The percentage of current smokers was higher for men (21.8%) than for women (17.1%).
- The percentage of former smokers was higher for men than for women; the percentage of those who had never smoked was higher for women than for men.

NOTES: Data are based on household interviews of a sample of the civilian noninstitutionalized population. • Current smokers were defined as those who had smoked more than 100 cigarettes in their lifetime and now smoke every day or some days. • The analyses excluded 0.3% of persons with unknown smoking status. • See "[Technical Notes](#)" for more details.

Figure 8.3. Prevalence of current smoking among adults aged 18 years and over, by age group and sex: United States, January–June 2011

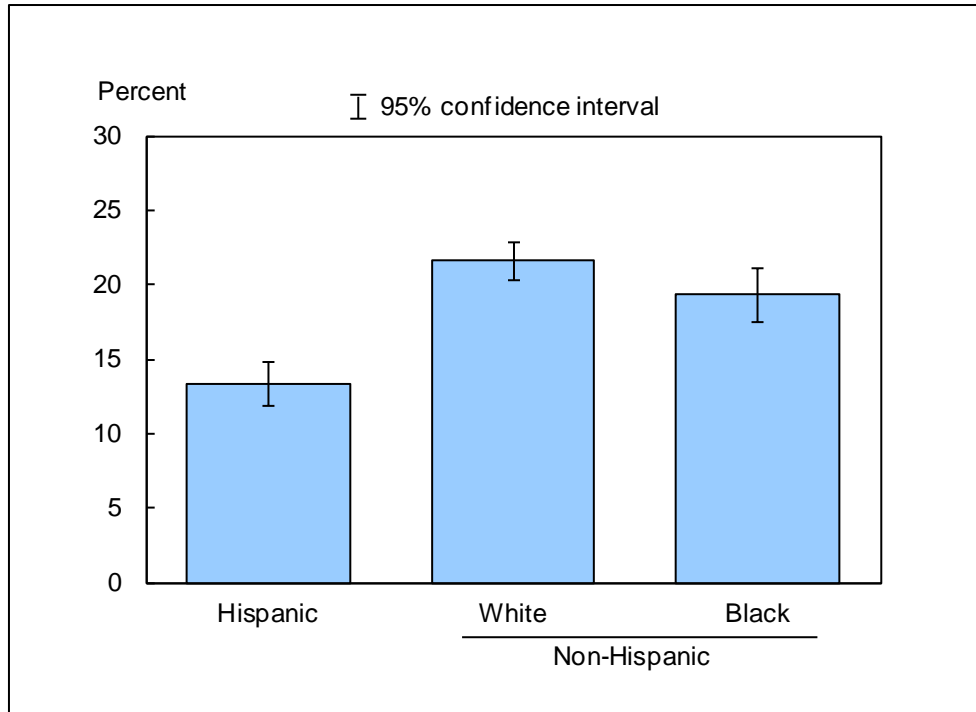


DATA SOURCE: CDC/NCHS, National Health Interview Survey, January–June 2011, Sample Adult Core component.

- For both sexes combined, the percentage of adults who were current smokers was lower among adults aged 65 and over (8.2%) than among adults aged 18–44 (21.7%) and 45–64 (21.6%). This pattern in current smoking by age group was seen in both men and women.
- For the age groups 18–44 and 45–64, men were more likely than women to be current smokers.

NOTES: Data are based on household interviews of a sample of the civilian noninstitutionalized population. • Current smokers were defined as those who had smoked more than 100 cigarettes in their lifetime and now smoke every day or some days. • The analyses excluded 0.3% of persons with unknown smoking status. • See "[Technical Notes](#)" for more details.

Figure 8.4. Age-sex-adjusted prevalence of current smoking among adults aged 18 years and over, by race/ethnicity: United States, January–June 2011



DATA SOURCE: CDC/NCHS, National Health Interview Survey, January–June 2011, Sample Adult Core component.

- The age-sex-adjusted prevalence of current smoking was 13.3% for Hispanic persons, 21.6% for non-Hispanic white persons, and 19.3% for non-Hispanic black persons.
- Non-Hispanic white adults were the most likely to be current smokers, followed by non-Hispanic black adults and Hispanic adults.

NOTES: Data are based on household interviews of a sample of the civilian noninstitutionalized population. • Current smokers were defined as those who had smoked more than 100 cigarettes in their lifetime and now smoke every day or some days. • The analyses excluded 0.3% of persons with unknown smoking status. • Estimates are age-sex-adjusted using the projected 2000 U.S. population as the standard population and using five age groups: 18–24, 25–34, 35–44, 45–64, and 65 and over. • See "[Technical Notes](#)" for more details.

Data tables for Figures 8.1–8.4:

Data table for Figure 8.1. Prevalence of current smoking among adults aged 18 years and over: United States, 1997–June 2011

| Year | Crude ¹ percent (95% confidence interval) | Age-adjusted ² percent (95% confidence interval) |
|----------------|---|--|
| 1997 | 24.7 (24.1-25.3) | 24.6 (24.0-25.1) |
| 1998 | 24.1 (23.5-24.7) | 24.0 (23.4-24.6) |
| 1999 | 23.5 (22.9-24.1) | 23.3 (22.7-24.0) |
| 2000 | 23.2 (22.5-23.8) | 23.1 (22.5-23.7) |
| 2001 | 22.7 (22.1-23.3) | 22.6 (22.0-23.2) |
| 2002 | 22.4 (21.7-23.0) | 22.3 (21.7-22.9) |
| 2003 | 21.6 (21.0-22.2) | 21.5 (20.9-22.1) |
| 2004 | 20.9 (20.3-21.5) | 20.8 (20.2-21.4) |
| 2005 | 20.9 (20.28-21.52) | 20.8 (20.20-21.44) |
| 2006 | 20.8 (20.14-21.51) | 20.8 (20.09-21.43) |
| 2007 | 19.7 (18.91-20.59) | 19.7 (18.83-20.48) |
| 2008 | 20.5 (19.65-21.30) | 20.4 (19.59-21.21) |
| 2009 | 20.6 (19.83-21.27) | 20.6 (19.86-21.28) |
| 2010 | 19.4 (18.76-20.10) | 19.4 (18.71-20.07) |
| Jan.–June 2011 | 19.4 (18.43-20.31) | 19.4 (18.45-20.30) |

¹Crude estimates are presented in the figure.

²Estimates for this Healthy People 2020 Leading Health Indicator are age adjusted using the projected 2000 U.S. population as the standard population and using five age groups: 18–24, 25–34, 35–44, 45–64, and 65 and over.

NOTES: Data are based on household interviews of a sample of the civilian noninstitutionalized population. Beginning with the 2003 data, the National Health Interview Survey transitioned to weights derived from the 2000 census. In this Early Release, estimates for 2000–2002 were recalculated using weights derived from the 2000 census. See "[Technical Notes](#)" for more details.

DATA SOURCE: CDC/NCHS, National Health Interview Survey, 1997–June 2011, Sample Adult Core component.

Data table for Figure 8.2. Percent distribution of smoking status among adults aged 18 years and over, by sex: United States, January–June 2011

| Smoking status and sex | Percent | 95% confidence interval |
|------------------------|---------|-------------------------|
| Never, total | 58.9 | 57.80-59.91 |
| Never, male | 53.5 | 51.96-55.01 |
| Never, female | 63.9 | 62.50-65.28 |
| Former, total | 21.8 | 20.96-22.60 |
| Former, male | 24.7 | 23.48-25.87 |
| Former, female | 19.1 | 17.96-20.16 |
| Current, total | 19.4 | 18.43-20.31 |
| Current, male | 21.8 | 20.52-23.16 |
| Current, female | 17.1 | 15.95-18.15 |

NOTE: Data are based on household interviews of a sample of the civilian noninstitutionalized population.

DATA SOURCE: CDC/NCHS, National Health Interview Survey, January–June 2011, Sample Adult Core component.

Data table for Figure 8.3. Prevalence of current smoking among adults aged 18 years and over, by age group and sex: United States, January–June 2011

| Age (years) and sex | Percent | 95% confidence interval |
|--|---------|-------------------------|
| 18-44, total | 21.7 | 20.44-23.05 |
| 18-44, male | 23.8 | 21.90-25.65 |
| 18-44, female | 19.7 | 18.12-21.31 |
| 45-64, total | 21.6 | 19.97-23.14 |
| 45-64, male | 24.6 | 22.36-26.91 |
| 45-64, female | 18.6 | 16.77-20.51 |
| 65 and over, total | 8.2 | 7.12-9.28 |
| 65 and over, male | 9.3 | 7.56-11.05 |
| 65 and over, female | 7.3 | 6.03-8.64 |
| 18 and over (crude ¹), total | 19.4 | 18.43-20.31 |
| 18 and over (crude ¹), male | 21.8 | 20.52-23.16 |
| 18 and over (crude ¹), female | 17.1 | 15.95-18.15 |
| 18 and over (age-adjusted ²), total | 19.4 | 18.45-20.30 |
| 18 and over (age-adjusted ²), male | 21.5 | 20.18-22.77 |
| 18 and over (age-adjusted ²), female | 17.4 | 16.25-18.48 |

¹Crude estimates are presented in the figure.

²Estimates for this Healthy People 2020 Leading Health Indicator are age adjusted using the projected 2000 U.S. population as the standard population and using five age groups: 18–24, 25–34, 35–44, 45–64, and 65 and over.

NOTE: Data are based on household interviews of a sample of the civilian noninstitutionalized population.

DATA SOURCE: CDC/NCHS, National Health Interview Survey, January–June 2011, Sample Adult Core component.

Data table for Figure 8.4. Age-sex-adjusted prevalence of current smoking among adults aged 18 years and over, by race/ethnicity: United States, January–June 2011

| Race/ethnicity | Age-sex-adjusted ¹ percent (95% confidence interval) | Age-adjusted ² percent (95% confidence interval) |
|---|--|--|
| Hispanic or Latino | 13.3 (11.89-14.77) | 13.5 (12.01-15.03) |
| Not Hispanic or Latino, single race, white | 21.6 (20.29-22.87) | 21.6 (20.30-22.89) |
| Not Hispanic or Latino, single race, black | 19.3 (17.53-21.16) | 19.1 (17.32-20.97) |

¹Age-sex-adjusted estimates are presented in the figure. Estimates are age-sex-adjusted using the projected 2000 U.S. population as the standard population and using five age groups: 18–24, 25–34, 35–44, 45–64, and 65 and over.

²Estimates for this Healthy People 2020 Leading Health Indicator are age adjusted using the projected 2000 U.S. population as the standard population and using five age groups: 18–24, 25–34, 35–44, 45–64, and 65 and over.

NOTE: Data are based on household interviews of a sample of the civilian noninstitutionalized population.

DATA SOURCE: CDC/NCHS, National Health Interview Survey, January–June 2011, Sample Adult Core component.