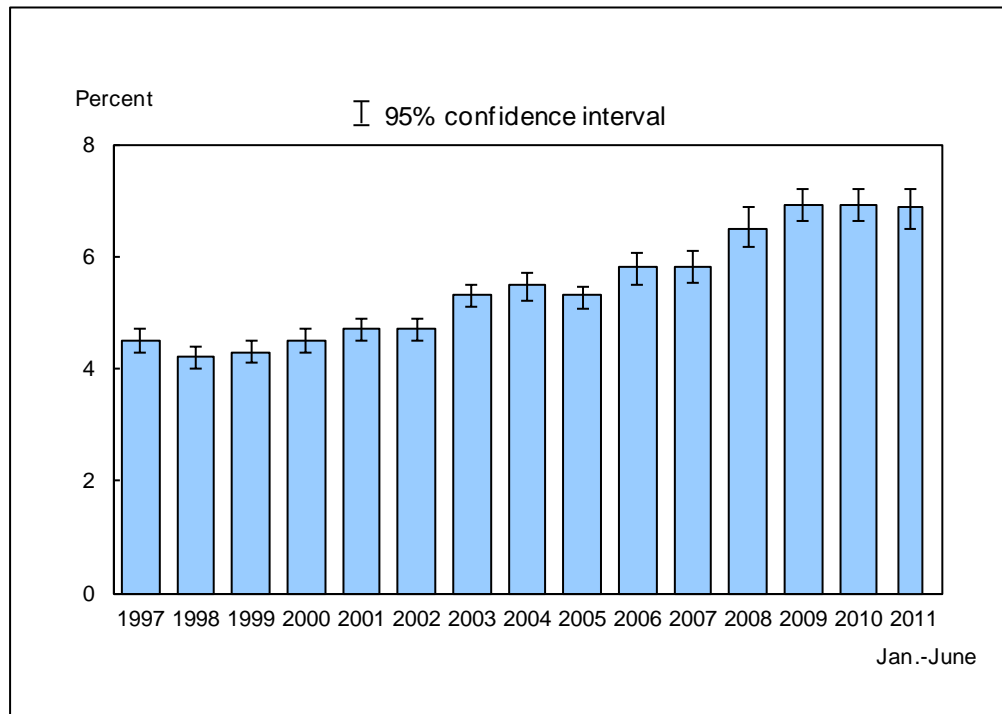


Figure 3.1. Percentage of persons of all ages who failed to obtain needed medical care due to cost at some time during the past 12 months: United States, 1997–June 2011

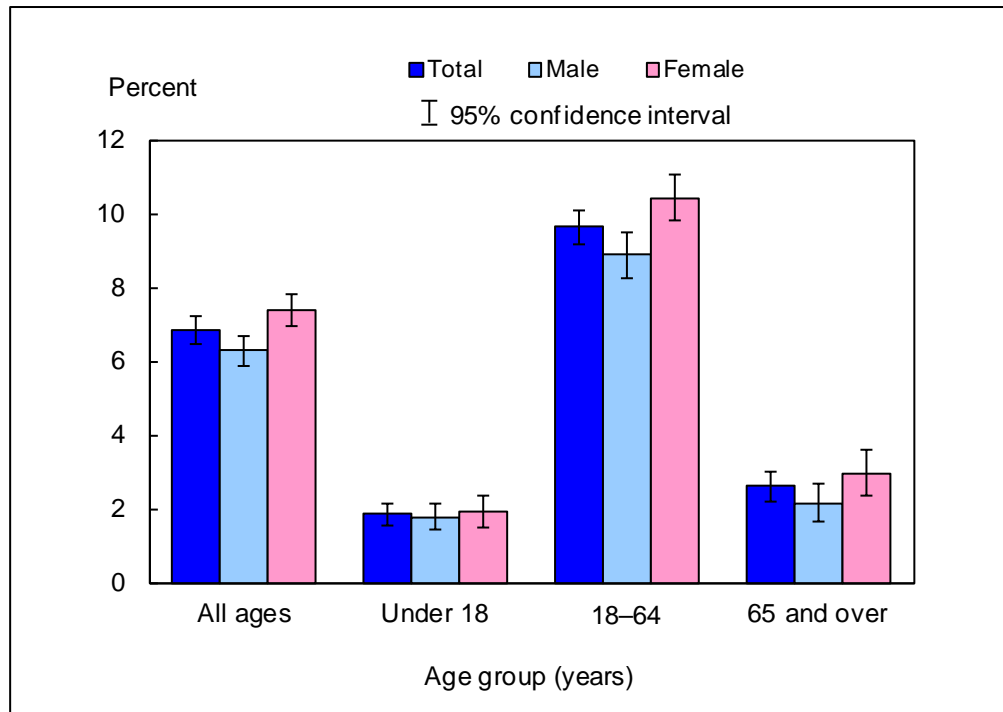


DATA SOURCE: CDC/NCHS, National Health Interview Survey, 1997–June 2011, Family Core component.

- For January–June 2011, 6.8% (95% confidence interval = 6.48%–7.20%) of the population failed to obtain needed medical care due to cost at some time during the past 12 months, which was not significantly different from the 2010 estimate of 6.9%.
- There was a generally increasing trend in the percentage of persons who failed to obtain needed medical care due to cost, from 4.3% in 1999 to 6.8% in January–June 2011.

NOTES: Data are based on household interviews of a sample of the civilian noninstitutionalized population. • The analyses excluded persons with unknown responses to the question on failure to obtain needed medical care due to cost (about 0.2% of respondents each year). • See "[Technical Notes](#)" for more details.

Figure 3.2. Percentage of persons of all ages who failed to obtain needed medical care due to cost at some time during the past 12 months, by age group and sex: United States, January–June 2011

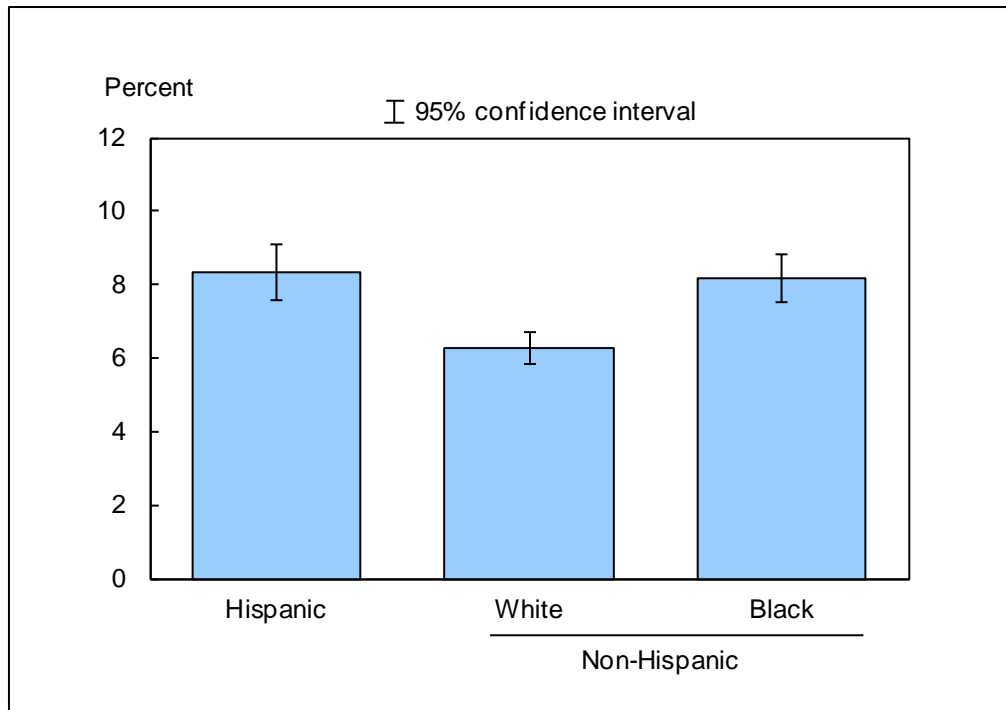


DATA SOURCE: CDC/NCHS, National Health Interview Survey, January–June 2011, Family Core component.

- For both sexes combined, the percentage of persons who failed to obtain needed medical care due to cost at some time during the past 12 months was 1.8% for those under age 18, 9.7% for those aged 18–64, and 2.6% for those aged 65 and over.
- For adults aged 18–64 and 65 and over, women were more likely than men to have failed to obtain needed medical care due to cost during the past 12 months.

NOTES: Data are based on household interviews of a sample of the civilian noninstitutionalized population. • The analyses excluded 0.1% persons with unknown responses to the question on failure to obtain needed medical care due to cost. • See "[Technical Notes](#)" for more details.

Figure 3.3. Age-sex-adjusted percentage of persons of all ages who failed to obtain needed medical care due to cost at some time during the past 12 months, by race/ethnicity: United States, January–June 2011



DATA SOURCE: CDC/NCHS, National Health Interview Survey, January–June 2011, Family Core component.

- After adjustment for age and sex, 8.3% of Hispanic persons, 6.3% of non-Hispanic white persons, and 8.2% of non-Hispanic black persons failed to obtain needed medical care due to cost at some time during the year preceding the interview.
- Hispanic persons and non-Hispanic black persons were more likely than non-Hispanic white persons to have failed to obtain needed medical care due to cost.

NOTES: Data are based on household interviews of a sample of the civilian noninstitutionalized population. • The analyses excluded 0.1% of persons with unknown responses to the question on failure to obtain needed medical care due to cost. • Estimates are age-sex-adjusted using the projected 2000 U.S. population as the standard population and using three age groups: under 18, 18–64, and 65 and over. • See "[Technical Notes](#)" for more details.

Data tables for Figures 3.1–3.3:

Data table for Figure 3.1. Percentage of persons of all ages who failed to obtain needed medical care due to cost at some time during the past 12 months: United States, 1997–June 2011

Year	Crude ¹ percent (95% confidence interval)	Age-adjusted ² percent (95% confidence interval)
1997	4.5 (4.3-4.7)	4.5 (4.4-4.7)
1998	4.2 (4.0-4.4)	4.2 (4.0-4.4)
1999	4.3 (4.1-4.5)	4.3 (4.1-4.5)
2000	4.5 (4.3-4.7)	4.5 (4.2-4.7)
2001	4.7 (4.5-4.9)	4.7 (4.5-4.9)
2002	4.7 (4.5-4.9)	4.7 (4.5-4.9)
2003	5.3 (5.1-5.5)	5.2 (5.0-5.5)
2004	5.5 (5.2-5.7)	5.4 (5.2-5.6)
2005	5.3 (5.05-5.45)	5.2 (4.99-5.40)
2006	5.8 (5.49-6.07)	5.7 (5.42-6.00)
2007	5.8 (5.54-6.11)	5.8 (5.47-6.03)
2008	6.5 (6.17-6.87)	6.4 (6.09-6.78)
2009	6.9 (6.62-7.21)	6.8 (6.54-7.12)
2010	6.9 (6.64-7.20)	6.8 (6.56-7.10)
Jan.–June 2011	6.8 (6.48-7.20)	6.8 (6.40-7.11)

¹Crude estimates are presented in the figure.

²Estimates are age adjusted using the projected 2000 U.S. population as the standard population and using three age groups: under 18, 18–64, and 65 and over.

NOTES: Data are based on household interviews of a sample of the civilian noninstitutionalized population. Beginning with the 2003 data, the National Health Interview Survey transitioned to weights derived from the 2000 census. In this Early Release, estimates for 2000–2002 were recalculated using weights derived from the 2000 census. See "[Technical Notes](#)" for more details.

DATA SOURCE: CDC/NCHS, National Health Interview Survey, 1997–June 2011, Family Core component.

Data table for Figure 3.2. Percentage of persons of all ages who failed to obtain needed medical care due to cost at some time during the past 12 months, by age group and sex: United States, January–June 2011

Age (years) and sex	Percent	95% confidence interval
Under 18, total	1.8	1.52-2.16
Under 18, male	1.8	1.41-2.13
Under 18, female	1.9	1.47-2.36
18-64, total	9.7	9.15-10.17
18-64, male	8.9	8.27-9.47
18-64, female	10.4	9.82-11.03
65 and over, total	2.6	2.20-3.02
65 and over, male	2.1	1.64-2.66
65 and over, female	3.0	2.35-3.59
All ages (crude ¹), total	6.8	6.48-7.20
All ages (crude ¹), male	6.3	5.88-6.70
All ages (crude ¹), female	7.4	6.95-7.79
All ages (age-adjusted ²), total	6.8	6.40-7.11
All ages (age-adjusted ²), male	6.2	5.79-6.60
All ages (age-adjusted ²), female	7.3	6.87-7.70

¹Crude estimates are presented in the figure.

²Estimates are age adjusted using the projected 2000 U.S. population as the standard population and using three age groups: under 18, 18–64, and 65 and over.

NOTE: Data are based on household interviews of a sample of the civilian noninstitutionalized population.

DATA SOURCE: CDC/NCHS, National Health Interview Survey, January–June 2011, Family Core component.

Data table for Figure 3.3. Age-sex-adjusted percentage of persons of all ages who failed to obtain needed medical care due to cost at some time during the past 12 months, by race/ethnicity: United States, January–June 2011

Race/ethnicity	Percent ¹	95% confidence interval
Hispanic or Latino	8.3	7.60-9.09
Not Hispanic or Latino, single race, white	6.3	5.81-6.71
Not Hispanic or Latino, single race, black	8.2	7.53-8.84

¹Estimates are age-sex-adjusted using the projected 2000 U.S. population as the standard population and using three age groups: under 18, 18–64, and 65 and over.

NOTE: Data are based on household interviews of a sample of the civilian noninstitutionalized population.

DATA SOURCE: CDC/NCHS, National Health Interview Survey, January–June 2011, Family Core component.