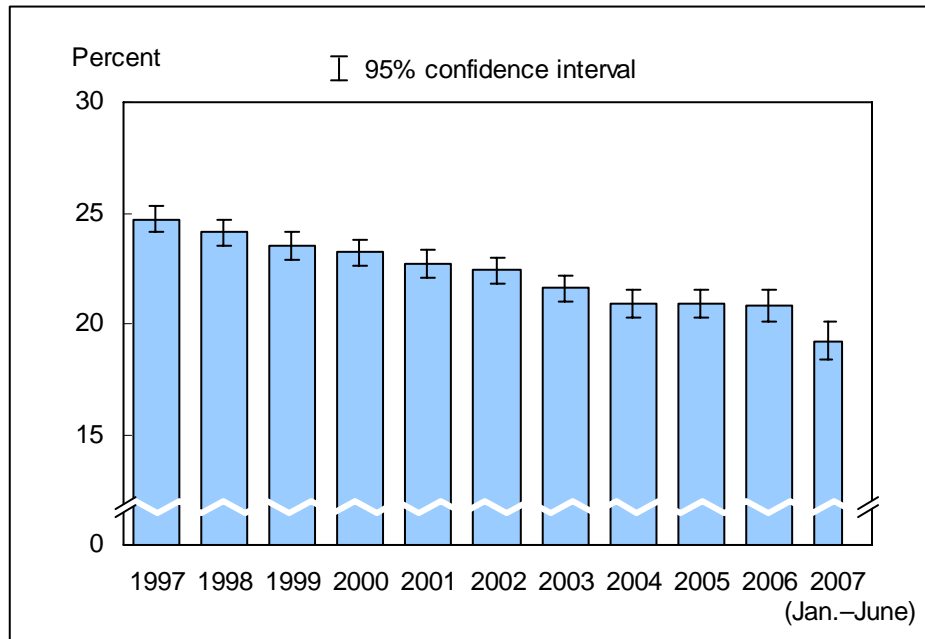


**Figure 8.1. Prevalence of current smoking among adults aged 18 years and over: United States, 1997–June 2007**

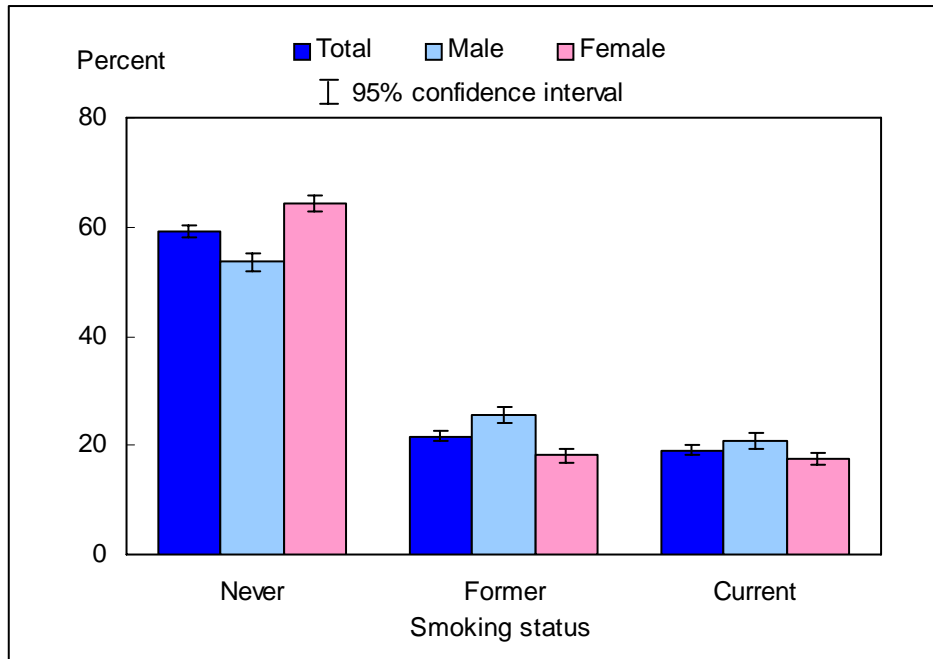


NOTES: Current smokers were defined as those who smoked more than 100 cigarettes in their lifetime and now smoke every day or some days. The analyses excluded persons with unknown smoking status (about 1% of respondents each year). Beginning with the 2003 data, the National Health Interview Survey (NHIS) transitioned to weights derived from the 2000 census. In this Early Release, estimates for 2000–2002 were recalculated using weights derived from the 2000 census. See “About This Early Release” and Table III in the Appendix for more details.

DATA SOURCE: Sample Adult Core component of the 1997–2007 NHIS. The estimate for 2007 was based on data collected from January through June. Data are based on household interviews of a sample of the civilian noninstitutionalized population.

- For the period January through June 2007, 19.2% (95% confidence interval = 18.21–20.10%) of adults aged 18 years and over were current smokers, which was lower than the 2006 estimate of 20.8%.
- The prevalence of current smoking among U.S. adults declined from 24.7% in 1997 to 19.2% for the period January through June 2007.

**Figure 8.2. Percent distribution of smoking status among adults aged 18 years and over, by sex: United States, January–June 2007**



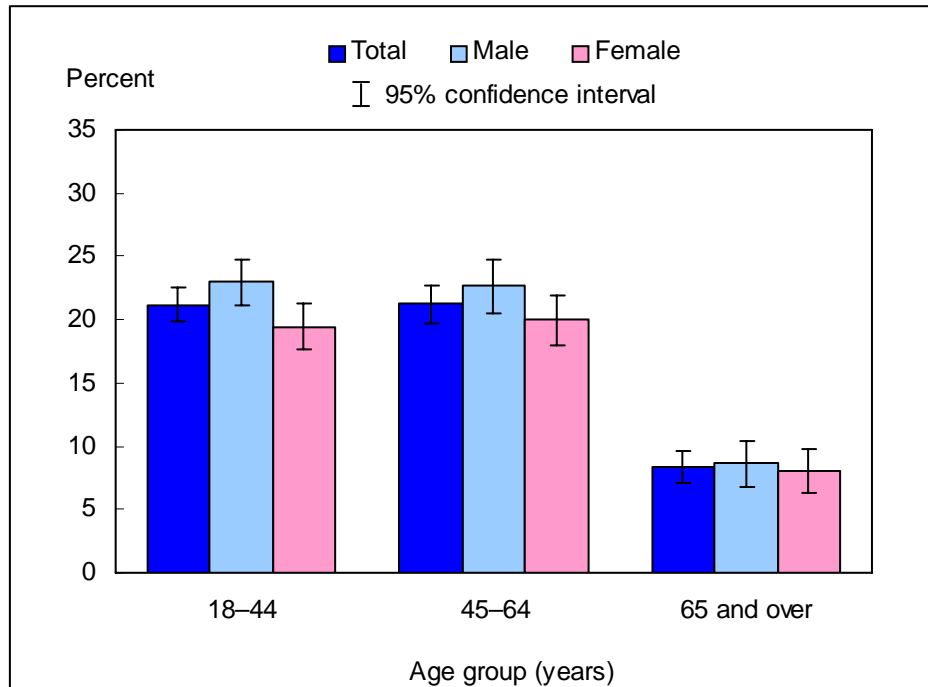
NOTES: Current smokers were defined as those who smoked more than 100 cigarettes in their lifetime and now smoke every day or some days. The analyses excluded 220 persons (1.7%) with unknown smoking status.

DATA SOURCE: Based on data collected from January through June in the Sample Adult Core component of the 2007 National Health Interview Survey. Data are based on household interviews of a sample of the civilian noninstitutionalized population.

■ The percentage of current smokers was higher for men (20.8%) than for women (17.6%).

■ The percentage of former smokers was higher for men than for women, and the percentage of those who had never smoked was higher for women than for men.

**Figure 8.3. Prevalence of current smoking among adults aged 18 years and over, by age group and sex: United States, January–June 2007**

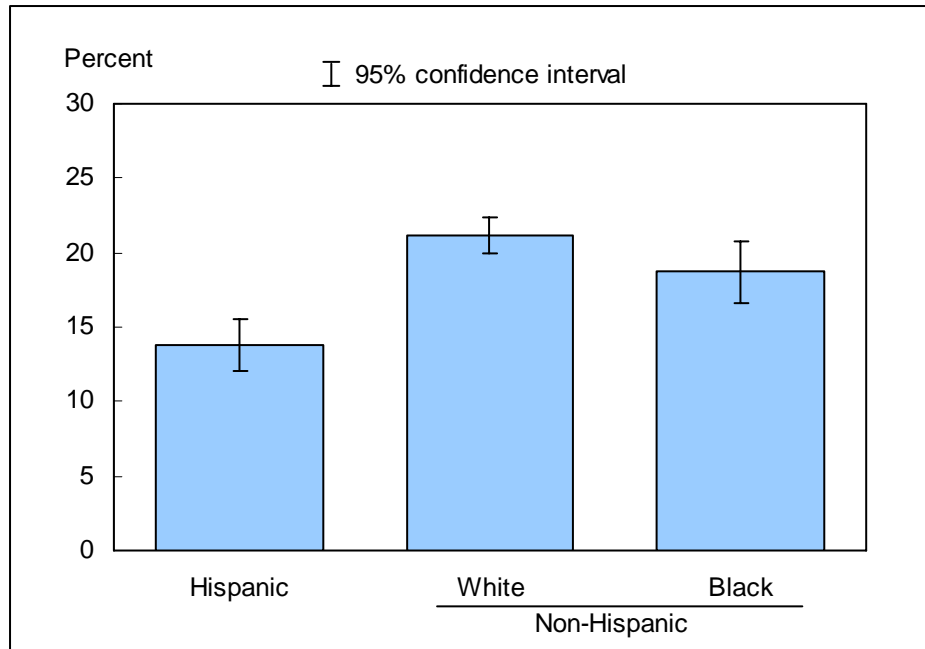


NOTES: Current smokers were defined as those who smoked more than 100 cigarettes in their lifetime and now smoke every day or some days. The analyses excluded 220 persons (1.7%) with unknown smoking status.

DATA SOURCE: Based on data collected from January through June in the Sample Adult Core component of the 2007 National Health Interview Survey. Data are based on household interviews of a sample of the civilian noninstitutionalized population.

- For both sexes combined, the percentage of adults who were current smokers was lower among adults aged 65 years and over (8.3%) than among adults aged 18–44 years (21.2%) and 45–64 years (21.3%). This pattern in current smoking by age group was seen in both men and women.
- For the age group 18–44 years, men were more likely than women to be current smokers.

**Figure 8.4. Age-sex-adjusted prevalence of current smoking among adults aged 18 years and over, by race/ethnicity: United States, January–June 2007**



NOTES: Current smokers were defined as those who smoked more than 100 cigarettes in their lifetime and now smoke every day or some days. The analyses excluded 107 persons (1.8%) with unknown smoking status. Estimates are age-sex adjusted using the projected 2000 U.S. population as the standard population and using five age groups: 18–24 years, 25–34 years, 35–44 years, 45–64 years, and 65 years and over.

DATA SOURCE: Based on data collected from January through June in the Sample Adult Core component of the 2007 National Health Interview Survey. Data are based on household interviews of a sample of the civilian noninstitutionalized population.

- The age-sex-adjusted prevalence of current smoking was 13.8% for Hispanic persons, 21.2% for non-Hispanic white persons, and 18.7% for non-Hispanic black persons.
- Non-Hispanic white adults and non-Hispanic black adults were more likely than Hispanic adults to be current smokers.

## Data tables for Figures 8.1–8.4:

**Data table for Figure 8.1. Prevalence of current smoking among adults aged 18 years and over: United States, 1997–June 2007**

Year	Percent (95% confidence interval)	
	Crude <sup>1</sup>	Age-adjusted <sup>2</sup>
1997	24.7 (24.1-25.3)	24.6 (24.0-25.1)
1998	24.1 (23.5-24.7)	24.0 (23.4-24.6)
1999	23.5 (22.9-24.1)	23.3 (22.7-24.0)
2000	23.2 (22.5-23.8)	23.1 (22.5-23.7)
2001	22.7 (22.1-23.3)	22.6 (22.0-23.2)
2002	22.4 (21.7-23.0)	22.3 (21.7-22.9)
2003	21.6 (21.0-22.2)	21.5 (20.9-22.1)
2004	20.9 (20.3-21.5)	20.8 (20.2-21.4)
2005	20.9 (20.28-21.52)	20.8 (20.20-21.44)
2006	20.8 (20.14-21.51)	20.8 (20.09-21.43)
<b>January–June 2007</b>	<b>19.2 (18.21-20.10)</b>	<b>19.0 (18.08-19.92)</b>

<sup>1</sup>Crude estimates are presented in the figure.

<sup>2</sup>Estimates for this Healthy People 2010 Leading Health Indicator are age adjusted using the projected 2000 U.S. population as the standard population and using five age groups: 18–24 years, 25–34 years, 35–44 years, 45–64 years, and 65 years and over.

NOTES: Beginning with the 2003 data, the National Health Interview Survey (NHIS) transitioned to weights derived from the 2000 census. In this Early Release, estimates for 2000–2002 were recalculated using weights derived from the 2000 census. See “About This Early Release” and Table III in the Appendix for more details.

DATA SOURCE: NHIS, 1997–June 2007. Data are based on household interviews of a sample of the civilian noninstitutionalized population.

**Data table for Figure 8.2. Percent distribution of smoking status among adults aged 18 years and over, by sex: United States, January–June 2007**

Smoking status and sex	Percent	95% confidence interval
<b>Never</b>		
Total	59.2	57.92-60.39
Male	53.6	51.96-55.31
Female	64.3	62.65-65.93
<b>Former</b>		
Total	21.7	20.69-22.69
Male	25.6	24.09-27.02
Female	18.1	16.84-19.36
<b>Current</b>		
Total	19.2	18.21-20.10
Male	20.8	19.50-22.12
Female	17.6	16.41-18.81

DATA SOURCE: National Health Interview Survey, January–June 2007. Data are based on household interviews of a sample of the civilian noninstitutionalized population.

**Data table for Figure 8.3. Prevalence of current smoking among adults aged 18 years and over, by age group and sex: United States, January–June 2007**

Age and sex	Percent	95% confidence interval
<b>18–44 years</b>		
Total	21.2	19.84-22.56
Male	23.0	21.13-24.83
Female	19.4	17.63-21.26
<b>45–64 years</b>		
Total	21.3	19.76-22.78
Male	22.6	20.49-24.76
Female	20.0	18.01-21.96
<b>65 years and over</b>		
Total	8.3	7.06-9.57
Male	8.6	6.82-10.42
Female	8.1	6.35-9.84
<b>18 years and over: crude<sup>1</sup></b>		
Total	19.2	18.21-20.10
Male	20.8	19.50-22.12
Female	17.6	16.41-18.81
<b>18 years and over: age-adjusted<sup>2</sup></b>		
Total	19.0	18.08-19.92
Male	20.4	19.11-21.62
Female	17.7	16.47-18.88

<sup>1</sup>Crude estimates are presented in the figure.

<sup>2</sup>Estimates for this Healthy People 2010 Leading Health Indicator are age adjusted using the projected 2000 U.S. population as the standard population and using five age groups: 18–24 years, 25–34 years, 35–44 years, 45–64 years, and 65 years and over.

DATA SOURCE: National Health Interview Survey, January–June 2007. Data are based on household interviews of a sample of the civilian noninstitutionalized population.

**Data table for Figure 8.4. Age-sex-adjusted prevalence of current smoking among adults aged 18 years and over, by race/ethnicity: United States, January–June 2007**

Race/ethnicity	Percent (95% confidence interval)	
	Age-sex-adjusted <sup>1</sup>	Age-adjusted <sup>2</sup>
<b>Hispanic or Latino</b>	13.8 (12.03-15.50)	14.0 (12.28-15.74)
<b>Not Hispanic or Latino:</b>		
<b>White, single race</b>	21.2 (19.91-22.39)	21.2 (19.91-22.40)
<b>Black, single race</b>	18.7 (16.67-20.77)	18.3 (16.31-20.37)

<sup>1</sup>Age-sex-adjusted estimates are presented in the figure. Estimates are age-sex adjusted using the projected 2000 U.S. population as the standard population and using five age groups: 18–24 years, 25–34 years, 35–44 years, 45–64 years, and 65 years and over.

<sup>2</sup>Estimates for this Healthy People 2010 Leading Health Indicator are age adjusted using the projected 2000 U.S. population as the standard population and using five age groups: 18–24 years, 25–34 years, 35–44 years, 45–64 years, and 65 years and over.

DATA SOURCE: National Health Interview Survey, January–June 2007. Data are based on household interviews of a sample of the civilian noninstitutionalized population.