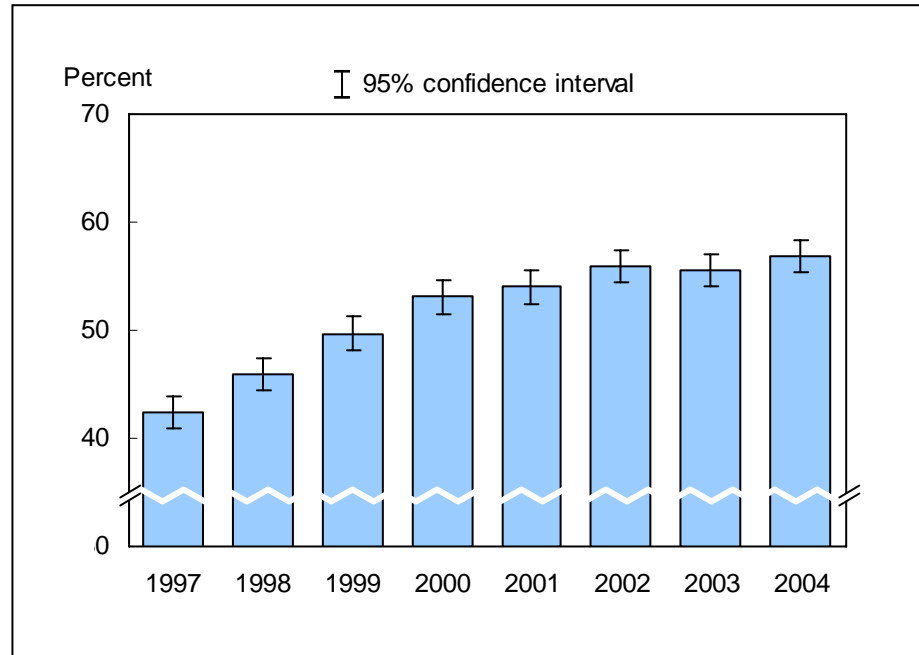


Figure 5.1. Percent of adults aged 65 years and over who had ever received a pneumococcal vaccination: United States, 1997-2004



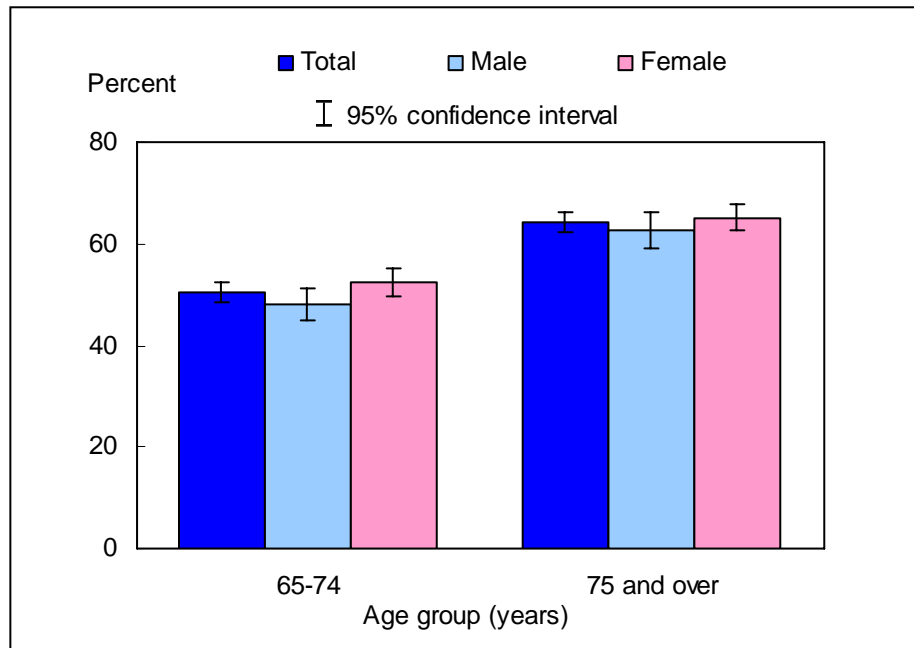
NOTES: The analyses excluded those with unknown pneumococcal vaccination status (about 3% of respondents each year). Beginning with the 2003 data, the National Health Interview Survey transitioned to weights derived from the 2000 census. In this Early Release, estimates for 2000-02 were recalculated using weights derived from the 2000 census. See "About This Release" and table III in the Appendix for more details.

DATA SOURCE: Sample Adult Core component of the 1997-2004 National Health Interview Surveys.

■ In 2004, the percentage of adults aged 65 years and over who had ever received a pneumococcal vaccination was 56.8% (95% confidence interval = 55.3%-58.3%), which was similar to the 2003 estimate of 55.6%.

■ For adults aged 65 years and over, there was an increasing trend in the percentage of those who had ever received a pneumococcal vaccination from 1997 to 2004.

Figure 5.2. Percent of adults aged 65 years and over who had ever received a pneumococcal vaccination, by age group and sex: United States, 2004



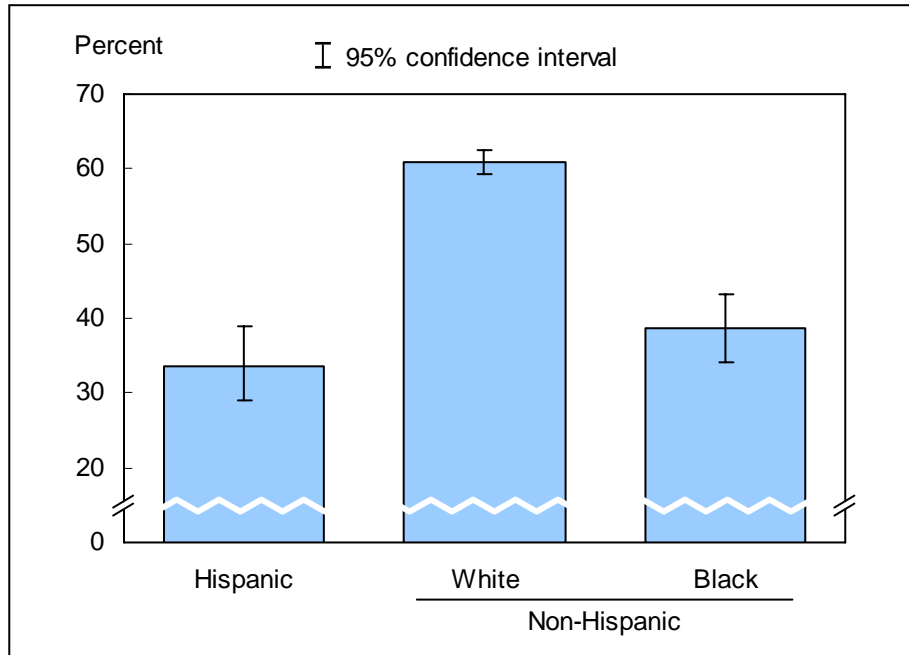
NOTES: The analyses excluded 234 adults (3.9%) aged 65 years and over with unknown pneumococcal vaccination status.

DATA SOURCE: Sample Adult Core component of the 2004 National Health Interview Survey.

■ The percentage of adults who had ever received a pneumococcal vaccination was 50.4% for persons aged 65-74 years and 64.2% for persons aged 75 years and over.

■ For adults aged 65-74 years, women were more likely than men to have ever received a pneumococcal vaccination.

Figure 5.3. Percent of adults aged 65 years and over who had ever received a pneumococcal vaccination, by race/ethnicity: United States, 2004



NOTE: The analyses excluded 234 adults (3.9%) aged 65 years and over with unknown pneumococcal vaccination status.

DATA SOURCE: Sample Adult Core component of the 2004 National Health Interview Survey.

■ The percentage of adults aged 65 years and over who had ever received a pneumococcal vaccination was 33.7% for Hispanic persons, 60.9% for non-Hispanic white persons, and 38.6% for non-Hispanic black persons.

■ Hispanic persons and non-Hispanic black persons were less likely than non-Hispanic white persons to have ever received a pneumococcal vaccination.

Data tables for figures 5.1-5.3:

Data table for figure 5.1. Percent of adults aged 65 years and over who had ever received a pneumococcal vaccination: United States, 1997-2004

Year	Percent (95% confidence interval)	
	Crude ¹	Age-adjusted ²
1997	42.4 (40.9-43.9)	42.6 (41.1-44.1)
1998	46.0 (44.5-47.5)	46.3 (44.8-47.8)
1999	49.7 (48.1-51.3)	49.9 (48.3-51.5)
2000	53.1 (51.5-54.7)	53.4 (51.8-55.0)
2001	54.0 (52.4-55.6)	54.2 (52.6-55.7)
2002	56.0 (54.5-57.5)	56.2 (54.8-57.7)
2003	55.6 (54.1-57.1)	55.7 (54.2-57.1)
2004	56.8 (55.3-58.3)	57.0 (55.5-58.5)

Crude estimates are presented in the figure.

²Estimates for this Healthy People 2010 Leading Health Indicator are age-adjusted to the 2000 projected U.S. standard population using two age groups: 65-74 years and 75 years and over.

Data table for figure 5.2. Percent of adults aged 65 years and over who had ever received a pneumococcal vaccination, by age group and sex: United States, 2004

Age and sex	Percent	95% confidence interval
65-74 years		
Total	50.4	48.3-52.5
Male	48.0	44.8-51.2
Female	52.4	49.6-55.2
75 years and over		
Total	64.2	62.1-66.3
Male	62.7	59.1-66.2
Female	65.2	62.7-67.6
65 years and over: crude¹		
Total	56.8	55.3-58.3
Male	54.3	51.7-56.8
Female	58.8	56.9-60.6
65 years and over: age-adjusted²		
Total	57.0	55.5-58.5
Male	55.0	52.5-57.5
Female	58.5	56.6-60.4

¹Crude estimates are presented in the figure.

²Estimates for this Healthy People 2010 Leading Health Indicator are age-adjusted to the 2000 projected U.S. standard population using two age groups: 65-74 years and 75 years and over.

Data table for figure 5.3. Percent of adults aged 65 years and over who had ever received a pneumococcal vaccination, by race/ethnicity: United States, 2004

Race/ethnicity	Percent (95% confidence interval)	
	Crude ¹	Age-adjusted ²
Hispanic or Latino	33.7 (29.0-38.9)	34.1 (29.1-39.4)
Not Hispanic or Latino:		
White, single race	60.9 (59.3-62.6)	60.9 (59.3-62.5)
Black, single race	38.6 (34.1-43.3)	39.2 (34.8-43.9)

Crude estimates are presented in the figure.

²Estimates for this Healthy People 2010 Leading Health Indicator are age-adjusted to the 2000 projected U.S. standard population using two age groups: 65-74 years and 75 years and over.