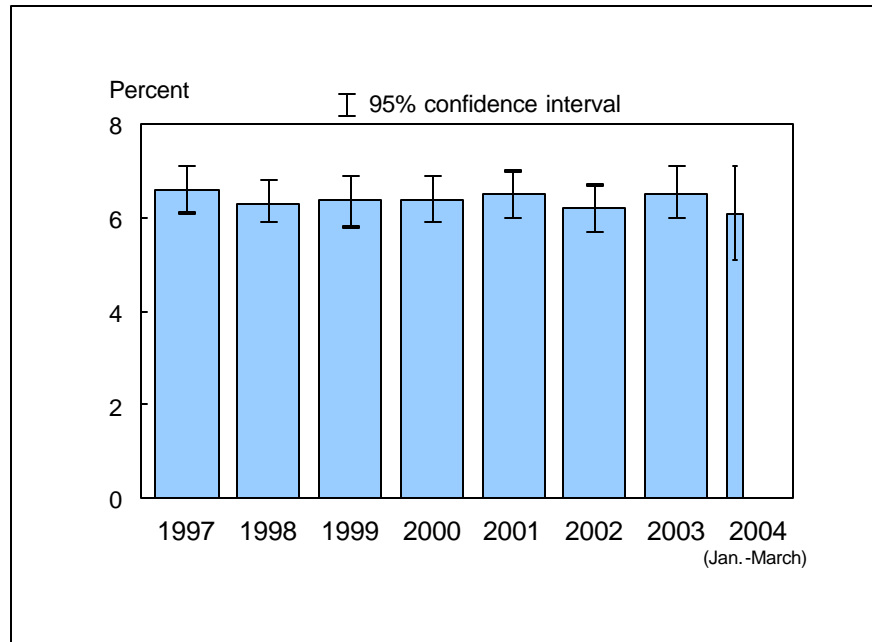


Figure 12.1. Percent of adults aged 65 years and over who need help with personal care from other persons: United States, 1997-2004



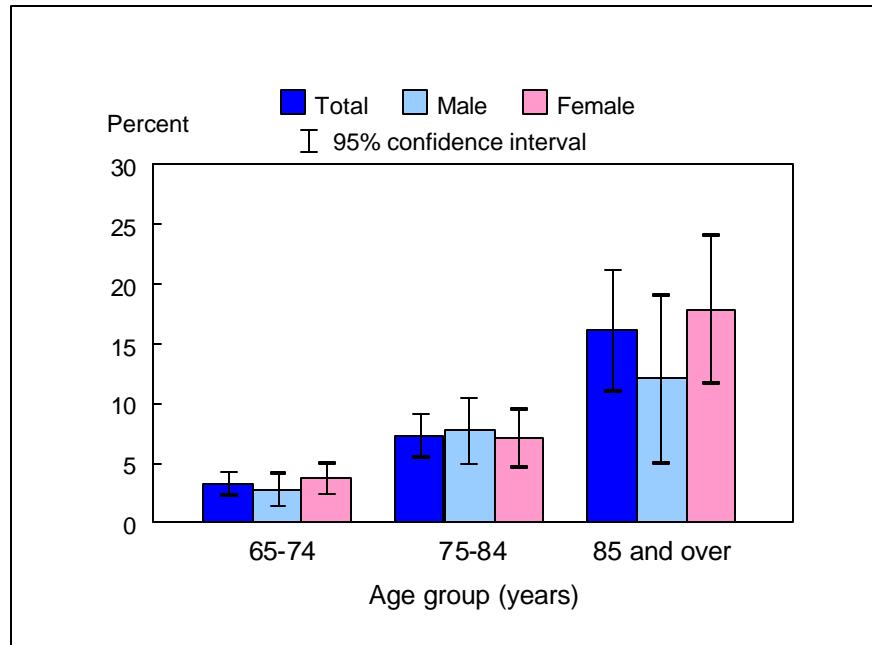
NOTES: Personal care needs, or activities of daily living (ADL), include eating, bathing, dressing, or getting around inside the person's home. The analyses excluded persons with unknown information on personal care needs (about 0.01% of respondents each year). CI is confidence interval. Beginning with the 2003 data, the National Health Interview Survey transitioned to weights derived from the 2000 census. In this Early Release, estimates for 2000-02 were recalculated using weights derived from the 2000 census. See "About This Release" and appendix tables in this release for more details.

DATA SOURCE: Family Core component of the 1997-2004 National Health Interview Surveys. The estimate for 2004 was based on data collected from January through March.

■ In early 2004, 6.1% (95% CI = 5.1%-7.1%) of adults aged 65 years and over needed help with personal care from other persons. This estimate was not significantly different from the 2003 estimate of 6.5%.

■ The annual percent of adults who needed help with personal care from other persons was 6.6% in 1997, 6.3% in 1998, 6.4% in 1999, 6.4% in 2000, 6.5% in 2001, 6.2% in 2002, and 6.5% in 2003.

Figure 12.2. Percent of adults aged 65 years and over who need help with personal care from other persons, by age group and sex: United States, January-March 2004



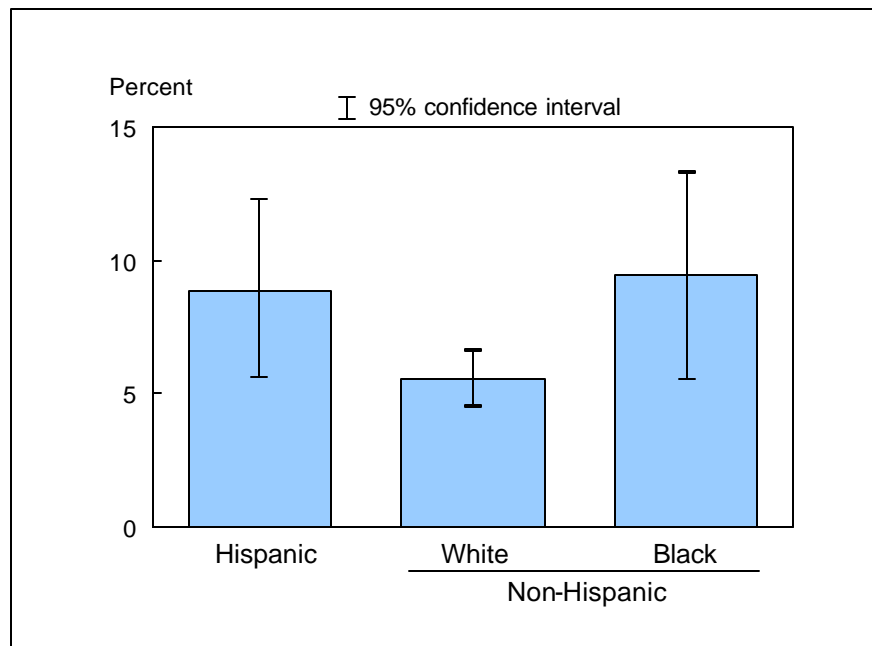
NOTE: Personal care needs, or activities of daily living (ADL), include eating, bathing, dressing, or getting around inside the person's home.

DATA SOURCE: Based on data collected from January through March in the Family Core component of the 2004 National Health Interview Survey.

■ For both sexes combined, adults aged 85 years and over were nearly five times as likely as adults aged 65-74 years old to need help with personal care from other persons (16.1% vs. 3.3%).

■ For adults aged 85 years and over, the percent of women who needed help with personal care from other persons was higher than that of men, but the difference was not statistically significant.

Figure 12.3. Age-sex-adjusted percent of adults aged 65 years and over who need help with personal care from other persons, by race/ethnicity: United States, January-March 2004



NOTES: Personal care needs, or activities of daily living (ADL), include eating, bathing, dressing, or getting around inside the person's home. Estimates are age-sex-adjusted to the 2000 projected U.S. standard population using three age groups: 65-74 years, 75-84 years, and 85 years and over.

DATA SOURCE: Based on data collected from January through March in the Family Core component of the 2004 National Health Interview Survey.

■ The age-sex-adjusted percent of persons who needed help with personal care from other persons was 8.9% for Hispanic persons, 5.5% for non-Hispanic white persons, and 9.4% for non-Hispanic black persons.

■ The percent of those who needed help with personal care from other persons was higher for Hispanic persons and non-Hispanic black persons than for non-Hispanic white persons, but the differences were not statistically significant.

Data tables for figures 12.1-12.3:

Data table for figure 12.1. Percent of adults aged 65 years and over who need help with personal care from other persons: United States, 1997–2004

Year	Percent	95% confidence interval
1997	6.6	6.1-7.1
1998	6.3	5.9-6.8
1999	6.4	5.8-6.9
2000	6.4	5.9-6.9
2001	6.5	6.0-7.0
2002	6.2	5.7-6.7
2003	6.5	6.0-7.1
January-March 2004	6.1	5.1-7.1

Data table for figure 12.2. Percent of adults aged 65 years and over who need help with personal care from other persons, by age group and sex: United States, January-March 2004

Age and sex	Percent	95% confidence interval
65-74 years		
Total	3.3	2.3-4.2
Men	2.7	1.4-4.1
Women	3.7	2.4-5.0
75-84 years		
Total	7.3	5.5-9.1
Men	7.7	4.9-10.4
Women	7.1	4.6-9.5
85 years and over		
Total	16.1	11.0-21.1
Men	12.1	5.0-19.1
Women	17.9	11.7-24.1
65 years and over: Crude¹		
Total	6.1	5.1-7.1
Men	5.2	4.0-6.4
Women	6.7	5.2-8.2
65 years and over: Age-adjusted²		
Total	6.3	5.3-7.3
Men	5.6	4.3-6.9
Women	6.6	5.2-8.0

¹Crude estimates are presented in the graph.

²Estimates are age-adjusted to the 2000 projected U.S. standard population using three age groups: 65-74 years, 75-84 years, and 85 years and over.

Data table for figure 12.3. Age-sex-adjusted percent of adults aged 65 years and over who need help with personal care from other persons, by race/ethnicity: United States, January-March 2004

Race/ethnicity	Percent ¹	95% confidence interval
Hispanic or Latino	8.9	5.6-12.3
Not Hispanic or Latino		
White, single race	5.5	4.5-6.6
Black, single race	9.4	5.5-13.3

¹Estimates are age-sex-adjusted to the 2000 projected U.S. standard population using three age groups: 65-74 years, 75-84 years, and 85 years and over.