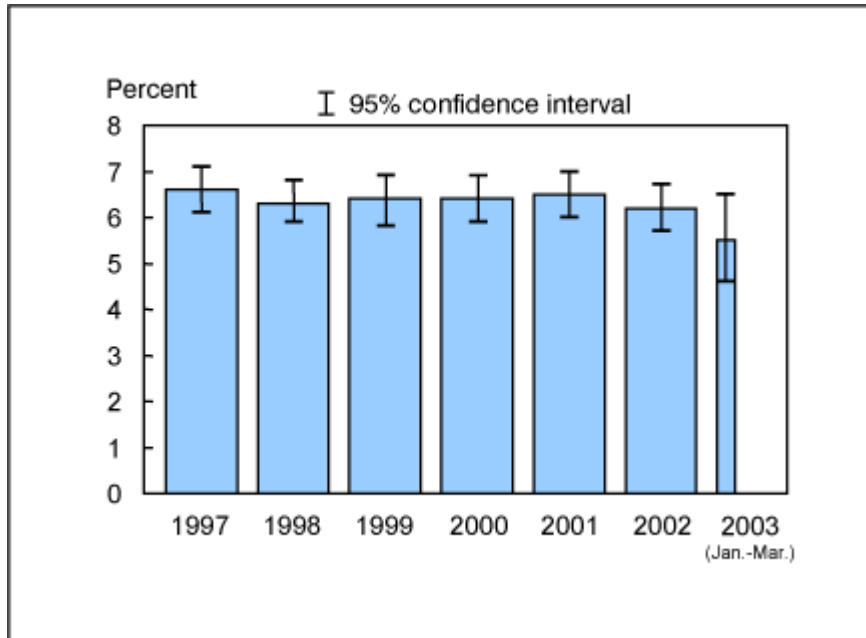


Figure 12.1. Percent of adults aged 65 years and over who need help with personal care from other persons: United States, 1997-2003

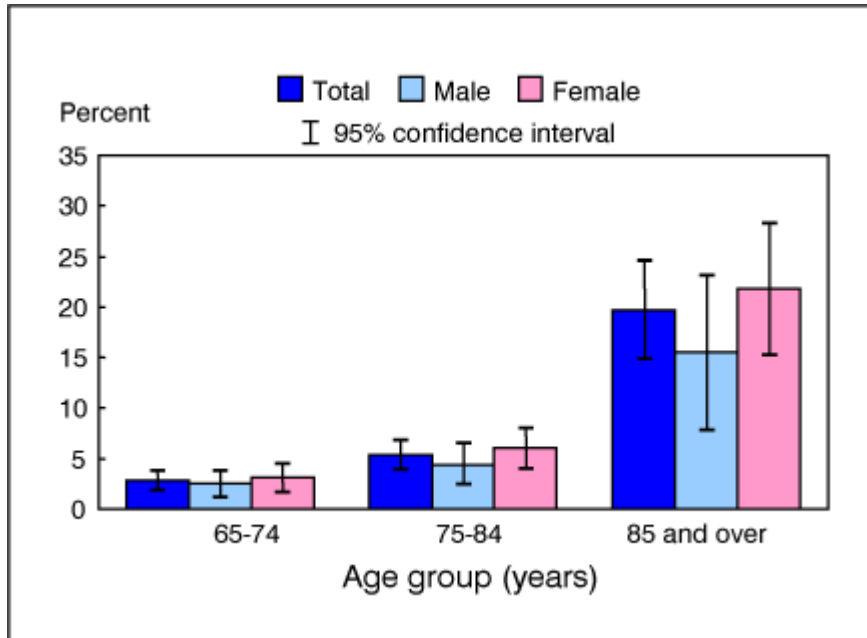


NOTES: Personal care needs or activities of daily living (ADL) include such things as eating, bathing, dressing, or getting around inside the person's home. The analysis excluded persons with unknown information on personal care needs (about 0.1% of respondents each year). CI is confidence interval. Beginning with the 2003 data, the National Health Interview Survey transitioned to weights derived from the 2000 census. This Early Release also recalculated the estimates using weights derived from the 2000 census for the 2000-2002 National Health Interview Surveys. See appendix tables in this release for more details.

DATA SOURCE: Family Core component of the 1997-2003 National Health Interview Surveys. The estimate for 2003 was based on data collected from January through March.

- In early 2003, 5.5% (95% CI = 4.6%-6.5%) of adults aged 65 years and over needed help with personal care from other persons. The estimate was lower than but not significantly different from the 2002 estimate of 6.2%.
- There was no significant time trend in the percent of adults who needed help with personal care from other persons (6.6% in 1997, 6.3% in 1998, 6.4% in 1999, 6.4% in 2000, 6.5% in 2001, and 6.2% in 2002).

Figure 12.2. Percent of adults aged 65 years and over who need help with personal care from other persons, by age group and sex: United States, January-March 2003

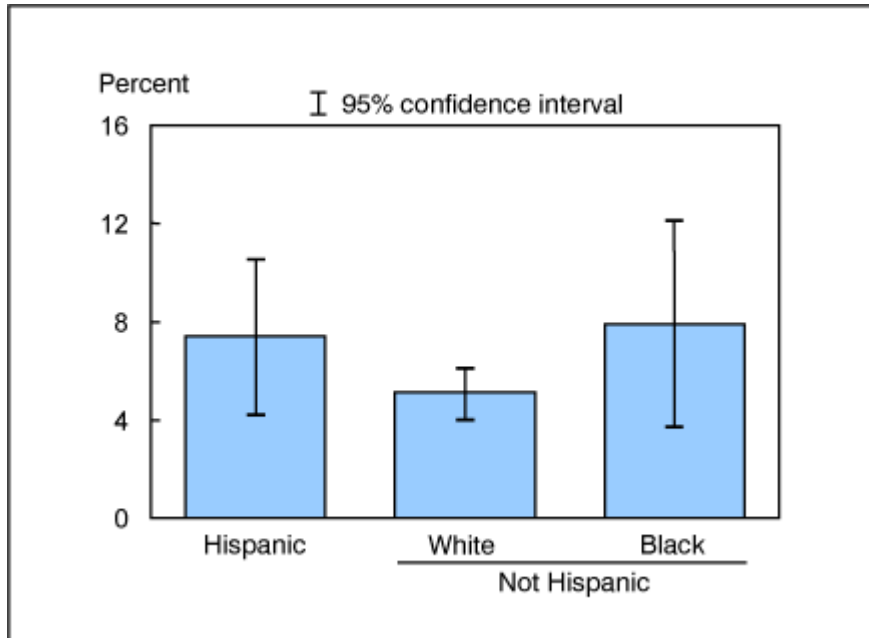


NOTE: Personal care needs or activities of daily living (ADL) include such things as eating, bathing, dressing, or getting around inside the person's home.

DATA SOURCE: Based on data collected from January-March in the Family Core component of the 2003 National Health Interview Survey.

- For both sexes combined, adults aged 85 years and over were more than six times as likely as adults aged 65-74 years old to need help with personal care from other persons (19.7% vs. 2.8%).
- For adults aged 85 years and over, the percent of women who needed help with personal care from other persons was higher than that for men, but the difference was not statistically significant due to small numbers.

Figure 12.3. Age- sex-adjusted percent of adults aged 65 years and over who need help with personal care from other persons by race/ethnicity: United States, January-March 2003



NOTES: Personal care needs or activities of daily living (ADL) include such things as eating, bathing, dressing, or getting around inside the person's home. Estimates are age- sex-adjusted to the year 2000 projected U.S. standard population using three age groups: 65-74 years, 75-84 years, and 85 years and over.

DATA SOURCE: Based on data collected from January-March in the Family Core component of the 2003 National Health Interview Survey.

- The age- sex-adjusted percent of persons who needed help with personal care from other persons was 7.4% for Hispanic persons, 5.1% for non-Hispanic white persons, and 7.9% for non-Hispanic black persons.
- The percents of Hispanic persons and non-Hispanic black persons who needed help with personal care from other persons were higher than that for non-Hispanic white persons, but the differences were not statistically significant due to small numbers.

Data tables for figures 12.1-12.3:

Data table for figure 12.1. Percent of adults aged 65 years and over who need help with personal care from other persons: United States, 1997–2003

Year	Percent	95% confidence interval
1997	6.6	6.1-7.1
1998	6.3	5.9-6.8
1999	6.4	5.8-6.9
2000	6.4	5.9-6.9
2001	6.5	6.0-7.0
2002	6.2	5.7-6.7
2003 (January-March)	5.5	4.6-6.5

Data table for figure 12.2. Percent of adults aged 65 years and over who need help with personal care from other persons, by age group and sex: United States, January-March 2003

Age and sex	Percent	95% confidence interval
65-74 years		
Total	2.8	1.9-3.8
Men	2.5	1.2-3.8
Women	3.1	1.7-4.5
75-84 years		
Total	5.4	3.9-6.8
Men	4.4	2.4-6.5
Women	6.0	4.0-8.0
85 years and over		
Total	19.7	14.8-24.6
Men	15.5	7.8-23.1
Women	21.8	15.2-28.3

Data table for figure 12.3. Age- sex-adjusted percent of adults aged 65 years and over who need help with personal care from other persons, by race/ethnicity: United States, January-March 2003

Race/ethnicity	Percent ¹	95% confidence interval
Hispanic or Latino	7.4	4.2-10.5
Not Hispanic or Latino		
White, single race	5.1	4.0-6.1
Black, single race	7.9	3.7-12.1

¹Estimates are age- sex-adjusted to the projected 2000 U.S. standard population using three age groups: 65-74 years, 75-84 years, and 85 years and over.