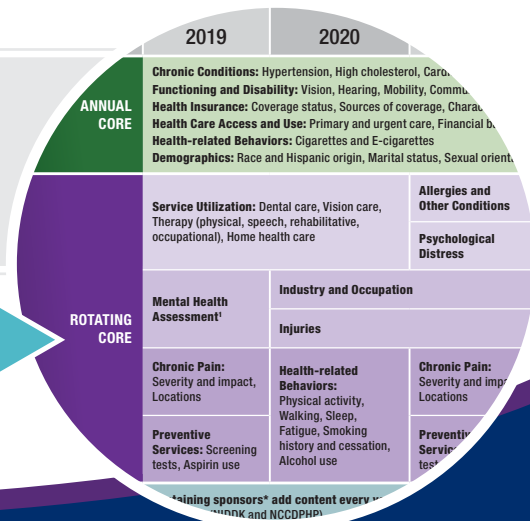




NATIONAL CENTER FOR HEALTH STATISTICS

National Health Interview Survey

NHIS Sample Adult and Child Questionnaires



SAMPLE ADULT QUESTIONNAIRE

Administered to one randomly selected adult in each household

	2019	2020	2021	2022	2023	2024	2025	2026	2027
ANNUAL CORE	<p>Chronic Conditions: Hypertension, High cholesterol, Cardiovascular conditions, Asthma, Cancer, Diabetes, Other chronic conditions, Height and weight</p> <p>Functioning and Disability: Vision, Hearing, Mobility, Communication, Cognition, Self-care and upper-body limitations, Anxiety, Depression, Social functioning</p> <p>Health Insurance: Coverage status, Sources of coverage, Characteristics of coverage, Continuity of coverage, Reasons for no health insurance</p> <p>Health Care Access and Use: Primary and urgent care, Financial barriers to care, Prescription medication, Flu and pneumonia immunization, Mental health care</p> <p>Health-related Behaviors: Cigarettes and E-cigarettes</p> <p>Demographics: Race and Hispanic origin, Marital status, Sexual orientation, Veterans status, Nativity, Schooling, Employment, Family income, Food-related program participation, Housing, Telephone use</p>								
ROTATING CORE	Service Utilization: Dental care, Vision care, Therapy (physical, speech, rehabilitative, occupational), Home health care		Allergies and Other Conditions	Service Utilization: Dental care, Vision care, Therapy (physical, speech, rehabilitative, occupational), Home health care		Allergies and Other Conditions	Service Utilization: Dental care, Vision care, Therapy (physical, speech, rehabilitative, occupational), Home health care		Allergies and Other Conditions
			Psychological Distress			Psychological Distress			Psychological Distress
	Mental Health Assessment¹	Industry and Occupation		Mental Health Assessment¹	Industry and Occupation		Mental Health Assessment¹	Industry and Occupation	
		Injuries			Injuries			Injuries	
Chronic Pain: Severity and impact, Locations	Health-related Behaviors: Physical activity, Walking, Sleep, Fatigue, Smoking history and cessation, Alcohol use	Chronic Pain: Severity and impact, Locations	Health-related Behaviors: Physical activity, Walking, Sleep, Fatigue, Smoking history and cessation, Alcohol use	Chronic Pain: Severity and impact, Locations	Health-related Behaviors: Physical activity, Walking, Sleep, Fatigue, Smoking history and cessation, Alcohol use	Chronic Pain: Severity and impact, Locations	Health-related Behaviors: Physical activity, Walking, Sleep, Fatigue, Smoking history and cessation, Alcohol use	Chronic Pain: Severity and impact, Locations	Chronic Pain: Severity and impact, Locations
Preventive Services: Screening tests, Aspirin use		Preventive Services: Screening tests, Aspirin use		Preventive Services: Screening tests, Aspirin use		Preventive Services: Screening tests, Aspirin use		Preventive Services: Screening tests, Aspirin use	
SPONSORED CONTENT	<p>Sustaining sponsors* add content every year. Annual sponsored content includes cancer control and prevention (NCI and NCCDPHP), immunizations (NCIRD), noncigarette tobacco product use (FDA), food security (USDA), disorders of sensory systems and communication (NIDCD), and insulin use (NIDDK and NCCDPHP).</p>								
	<p>Other sponsors* add content for selected years. Sponsorships include expanded content on arthritis in 2019 (NCCDPHP and NIAMS), asthma in 2020 (NCEH, NIOSH, and NHLBI), diabetes in 2019–2021 (NCCDPHP), insulin affordability in 2021 (NCCDPHP and NIDDK), prescription opioid use and pain management in 2020 (NCIPC), age of onset of disability in 2020–2022 (ACL), chronic fatigue syndrome in 2021–2022 (NCEZID), epilepsy in 2021–2022 (NCCDPHP), occupational health in 2021 (NIOSH), life satisfaction in 2021–2022 (NCCDPHP and NIH/ODP), and complementary and integrative health in 2022 (NCCIH).</p>								
EMERGING TOPICS	<p>New topics of growing interest may be added by the National Center for Health Statistics, generally for one year.</p> <p>Emerging topics include prescription opioid use and pain management in 2019, coronavirus-related content in 2020 (July)–2022, telehealth in 2020 (July)–2022, and health care access barriers in 2022.</p>								

* As of February 2022, sponsors include the National Cancer Institute (NCI), National Center for Chronic Disease Prevention and Health Promotion (NCCDPHP), National Center for Immunization and Respiratory Diseases (NCIRD), Food and Drug Administration (FDA), United States Department of Agriculture (USDA), National Institute on Deafness and Other Communication Disorders (NIDCD), National Institute of Diabetes and Digestive and Kidney Diseases (NIDDK), National Institute of Arthritis and Musculoskeletal and Skin Diseases (NIAMS), National Center for Environmental Health (NCEH), National Institute for Occupational Safety and Health (NIOSH), National Heart, Lung, and Blood Institute (NHLBI), National Center for Injury Prevention and Control (NCIPC), Administration for Community Living (ACL), National Center for Emerging and Zoonotic Infectious Diseases (NCEZID), National Institutes of Health Office of Disease Prevention (NIH/ODP), and National Center for Complementary and Integrative Health (NCCIH). NCCDPHP, NCIRD, NCEH, NIOSH, NCIPC, and NCEZID are part of the Centers for Disease Control and Prevention. NCI, NIDCD, NIDDK, NIAMS, NHLBI, ODP, and NCCIH are part of the National Institutes of Health.

¹ Questions come from the Patient Health Questionnaire and the Generalized Anxiety Disorder scale.

SAMPLE CHILD QUESTIONNAIRE

Administered to a parent or guardian of one randomly selected child in each household

	2019	2020	2021	2022	2023	2024	2025	2026	2027
ANNUAL CORE	<p>Health Status: Asthma, Diabetes, Developmental and learning disabilities, Social and emotional screening for very young children Functioning and Disability: Vision, Hearing, Mobility, Self-care, Communication and comprehension, Learning, Emotions, Behaviors Health Insurance: Coverage status, Sources of coverage, Characteristics of coverage, Continuity of coverage, Reasons for no health insurance Health Care Access and Use: Primary and urgent care, Financial barriers to care, Prescription medication, Flu immunization Demographics: Race and Hispanic origin of child, Marital status of parent(s), Nativity, Schooling, Employment of family members, Family income, Food-related program participation, Housing, Telephone use</p>								
ROTATING CORE	Service Utilization: Dental care, Mental health care, Other services		Allergies and Other Conditions	Service Utilization: Dental care, Mental health care, Other services		Allergies and Other Conditions	Service Utilization: Dental care, Mental health care, Other services		Allergies and Other Conditions
	Mental Health Assessment¹	Injuries		Mental Health Assessment¹	Injuries		Mental Health Assessment¹	Injuries	
	Stressful Life Events	Health-related Behaviors: Physical activity, Neighborhood characteristics, Sleep, Height and weight, Screen time	Stressful Life Events	Health-related Behaviors	Stressful Life Events	Health-related Behaviors: Physical activity, Neighborhood characteristics, Sleep, Height and weight, Screen time	Stressful Life Events	Health-related Behaviors: Physical activity, Neighborhood characteristics, Sleep, Height and weight, Screen time	Stressful Life Events
SPONSORED CONTENT	Sustaining sponsors* add content every year. Annual sponsored content includes household food security (USDA) and disorders of sensory systems and communication (NIDCD).								
	Other sponsors* add content for selected years. Sponsorships include asthma in 2020 (NCEH, NHLBI), additional stressful life events in 2021–2022 (NCIPC), life satisfaction in 2021–2022 (NCCDPHP and NIH/ODP), voice, swallowing, speech and language in 2022 (NIDCD), and complementary and integrative health in 2022 (NCCIH).								
EMERGING TOPICS	New topics of growing interest may be added by the National Center for Health Statistics, generally for one year. Emerging topics include coronavirus-related content in 2020 (July)–2022, telehealth in 2020 (July)–2022, concussions in 2020–2022, bullying in 2021–2022, and interaction with health care providers in 2021.								

* As of February 2022, sponsors include the United States Department of Agriculture (USDA), National Institute on Deafness and Other Communication Disorders (NIDCD), National Center for Environmental Health (NCEH), National Heart, Lung, and Blood Institute (NHLBI), National Center for Injury Prevention and Control (NCIPC), National Center for Chronic Disease Prevention and Health Promotion (NCCDPHP), National Institutes of Health Office of Disease Prevention (NIH/ODP), and National Center for Complementary and Integrative Health (NCCIH). NCEH, NCIPC, and NCCDPHP are part of the Centers for Disease Control and Prevention. NIDCD, NHLBI, ODP, and NCCIH are part of the National Institutes of Health.

¹Questions come from the Strengths and Difficulties Questionnaire.

For more information on the National Health Interview Survey, visit <https://www.cdc.gov/nchs/nhis/>.
 To view full-length questionnaires, visit <https://www.cdc.gov/nchs/nhis/data-questionnaires-documentation.htm>.



Special Thanks to Our Sustaining Sponsors

Sponsored content is used to collect data on new topics or to explore in more depth those subjects already tracked in the National Health Interview Survey (NHIS). Sustaining sponsors are agencies that sponsor content every year or over multiple years.



The **National Cancer Institute's** Division of Cancer Control and Population Sciences, and the **National Center for Chronic Disease Prevention and Health Promotion's** (NCCDPHP) Division of Cancer Prevention and Control, are the sustaining sponsors for content on cancer control and prevention. Thanks to their support, NHIS will collect additional information on the following topics in the years shown:

- Colorectal cancer screening (2019, 2021, 2023, 2025, 2027)
- Prostate cancer screening (2019, 2021, 2023, 2025, 2027)
- Breast cancer screening (2019, 2021, 2023, 2025)
- Cervical cancer screening (2019, 2021, 2025, 2027)
- Lung cancer screening (2024)
- Sun protection (2020, 2024)
- Physical activity and walkable communities (2020, 2024)
- Diet and nutrition (2022, 2026)
- Tobacco use and control (2022, 2026)
- Cancer risk assessment (2023, 2027)



The **National Institute of Diabetes and Digestive and Kidney Diseases** and NCCDPHP also sponsor annual data collection on insulin use for diabetes.



The **National Center for Immunization and Respiratory Diseases** sponsors additional annual questions on immunization.



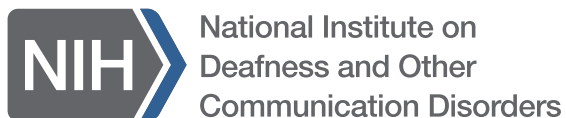
The **U.S. Department of Agriculture** sponsors annual questions on household food security.



The **U.S. Food and Drug Administration** sponsors annual questions on noncigarette tobacco product use.



The **National Institute on Deafness and Other Communication Disorders** sponsors questions on hearing and balance (2023, 2026); taste and smell (2021, 2024, 2027); and voice, swallowing, speech, and language disorders (2022, 2025).





NHIS

National Center for Health Statistics



United States[®]
Census
Bureau

<https://www.cdc.gov/nchs/nhis/> • Inquiries or suggestions: 301-458-4901, nhislist@cdc.gov