

# Collecting an Eschar Swab

NCEZID - National Center for Emerging and Zoonotic Infectious Diseases

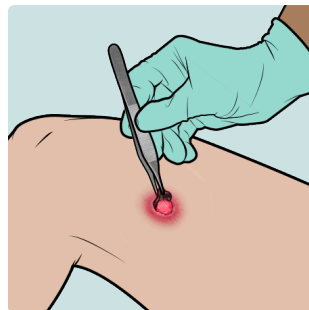
1



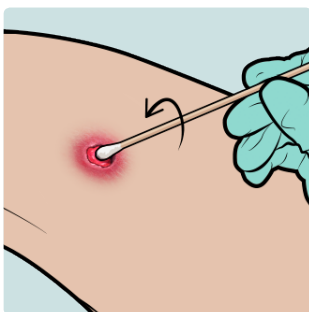
**Cleanse the eschar with a standard disinfectant solution.**  
Use sterile saline to remove remaining disinfectant.

2

**Use sterile tweezers to lift the scab partially or completely.**  
It is not necessary to remove the scab entirely if it is firmly attached. If removed, place the scab into an empty, sterile specimen container.



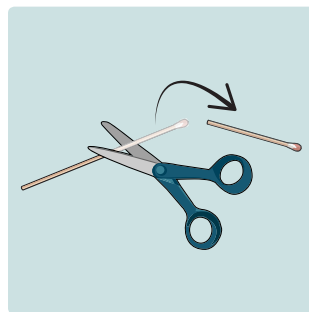
3



**Use a dry, sterile cotton swab to sample the ulcerated area.** Rotate the swab vigorously on ulcerated area while applying steady, gentle pressure.

4

**Place the swab in a sterile specimen container.** Swab can be placed in the same sterile specimen container as the scab.



5

**Ship specimen immediately overnight on cold packs or freeze and ship on dry ice.**



**U.S. Department of Health and Human Services**  
Centers for Disease Control and Prevention

**For more information on eschar-associated rickettsioses, visit**  
<https://www.cdc.gov/otherspottedfever/healthcare-providers/index.html>.

**For questions, please call the Rickettsial Zoonoses Branch at**  
(404) 639-1075 or email [rzbepidiag@cdc.gov](mailto:rzbepidiag@cdc.gov).