

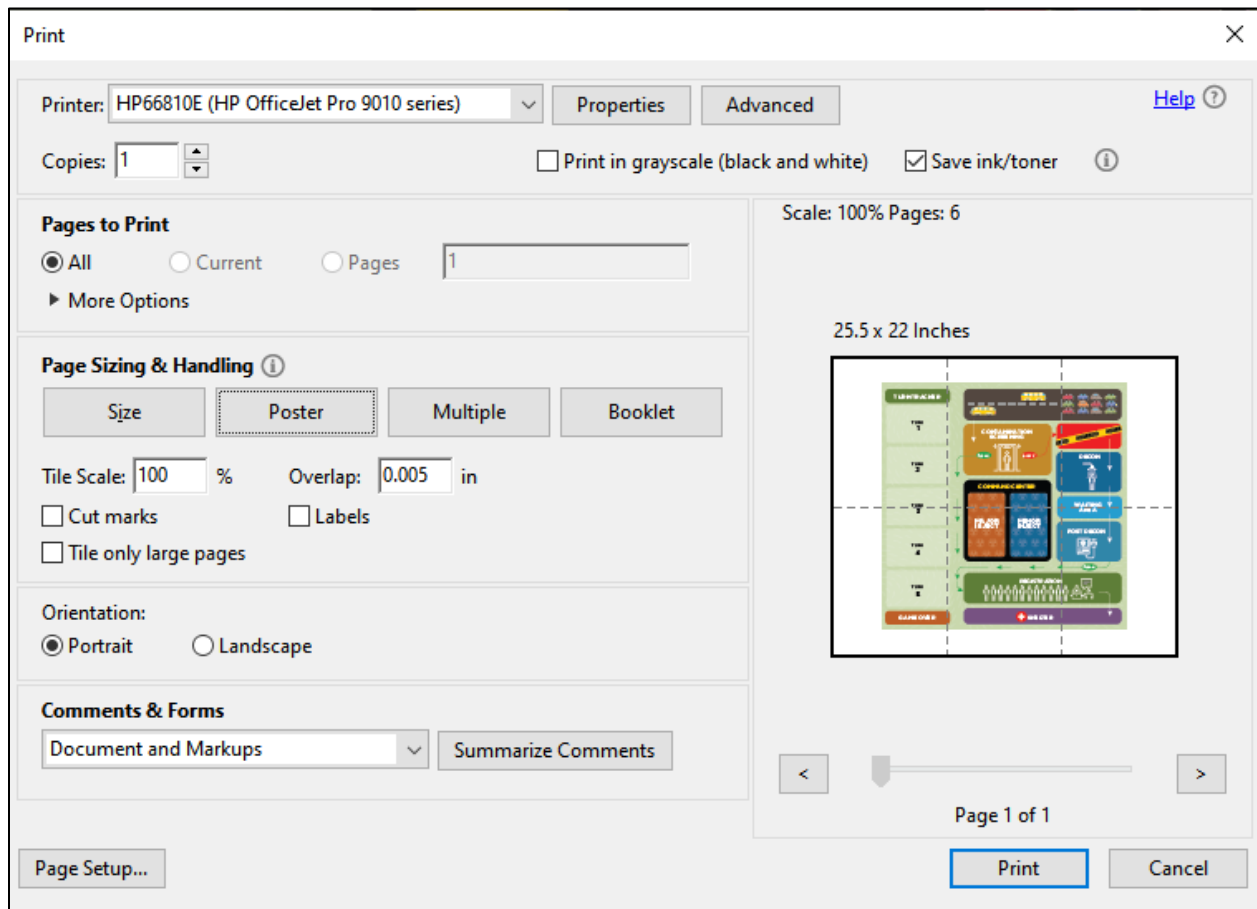
# Print Instructions

There are two ways to print components of This is a T.E.S.T.: **Print in Office** or **Professional Printing**.

## Print in Office

Each file has been formatted so that you can print in office and is to scale. The game board will be divided over multiple pages that will need to be assembled. Cards, resource tokens and other small components will require cutting.

For best printing, select the Poster option for Page Size and Handling.



## Professional Printing

There are small batch board game printers where you can also print game components. PNGs are provided in appropriate size and format to allow for uploading and printing. Listed are the components and the corresponding game component/sizing. You may still choose to print some components in office (such as the Rulebook).

- Game Board
  - Quad-Fold Game Board

- Dimensions: 18x18 inches
  - Image Size: 5475x5475 pixels
- Status Tracker and Player Mats
  - Square Mat
  - Dimensions: 8x8 inches
  - Image Size: 2475x2475 pixels
- Inject Card
  - Tarot Deck
  - Dimensions: 2.75x4.75 inches
  - Image Size: 900x1500 pixels
  - Each inject is a separate PNG. This means you can choose to not print all injects- just the ones you would like to exercise.
- Game Box
  - Large Box
  - Dimensions: 11x11 inches
  - Image Size: 3450x3450 pixels

Below are the additional stock pieces that can be ordered for small pieces and the number of pieces needed.

- Yellow Meeple (35)
- Green Meeple (20)
- Plastic Cubes (15)
- Chip Board Tokens (Funds) (20)
- Wooden Round Tokens (Status Trackers) (3)
- Plastic Busts (Player tokens) (7 of different colors)

Some components are not included for professional printing and are noted below. These can be printed on any regular printer.

- Resource Tokens
- Staging Area
- Incident Command Token