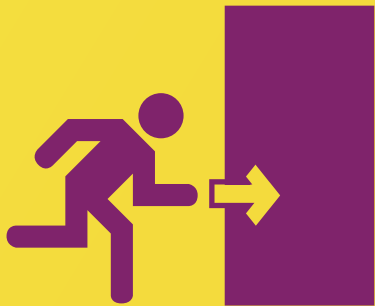


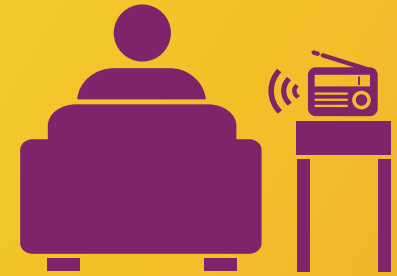
Do you know what to do in a radiation emergency?



GET INSIDE



STAY INSIDE



STAY TUNED

For more information, visit <http://emergency.cdc.gov/radiation>

Radiation Emergencies - What should I do?

If a radiation emergency occurs, people can take actions to protect themselves, their loved ones, and their pets.



In a radiation emergency you may be asked to get inside a building and take shelter for a period of time.

- This action is called “sheltering in place.”
- Get to the middle of the building or a basement, away from doors and windows.
- Bring pets inside.



Staying inside can reduce your exposure to radiation.

- Close and lock windows and doors.
- Take a shower or wipe exposed parts of your body with a damp cloth.
- Drink bottled water and eat food out of sealed containers.



Emergency officials are trained to respond to disaster situations and will provide specific actions to help keep you out of harm’s way.

- Use radios, televisions, computers, mobile devices, and other tools to get the latest information.
- Emergency officials will provide information about available services and assistance.

For more information, visit
<http://emergency.cdc.gov/radiation>



U.S. Department of
Health and Human Services
Centers for Disease
Control and Prevention