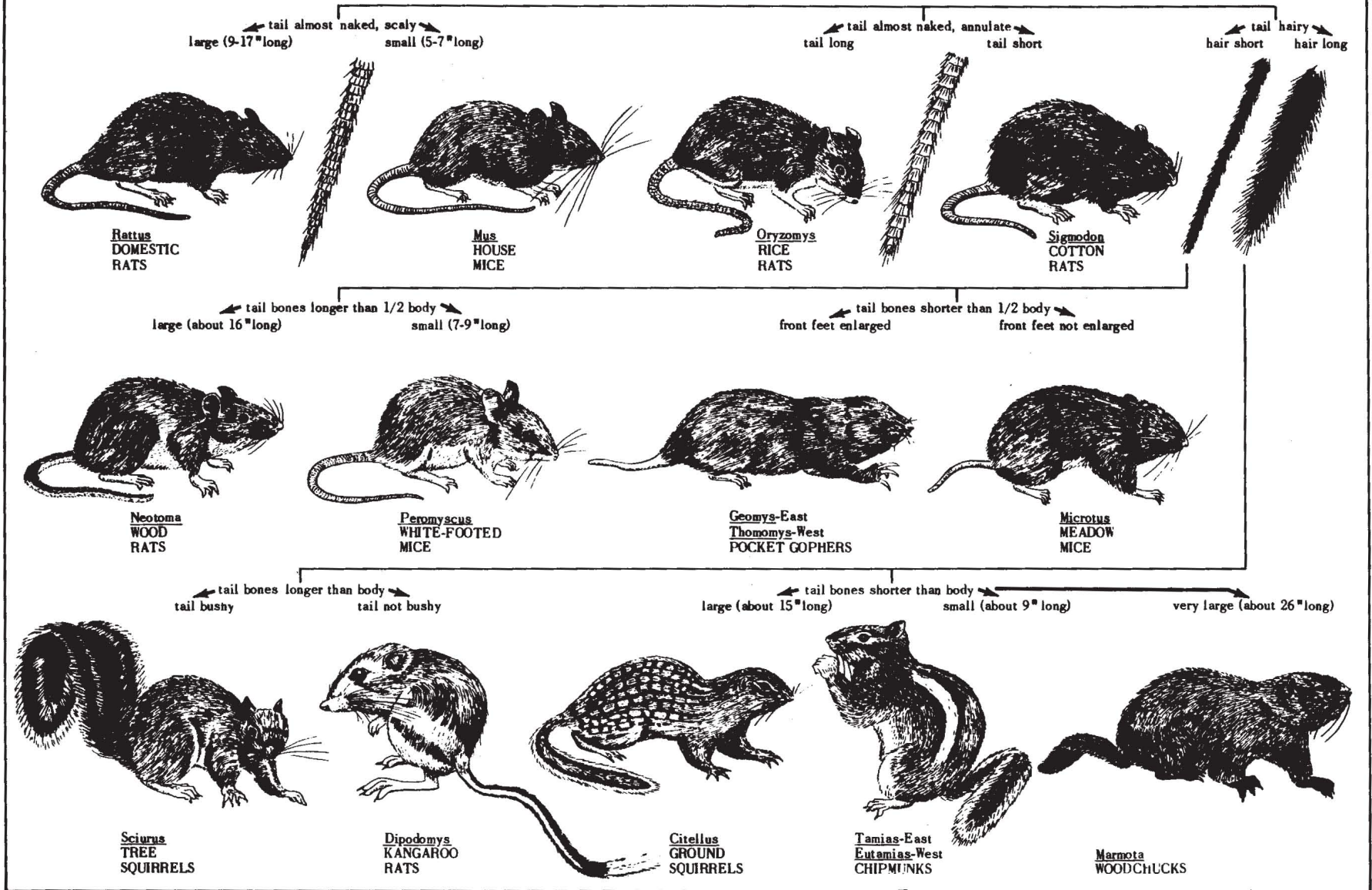


RODENTS: PICTORIAL KEY TO SOME COMMON UNITED STATES GENERA

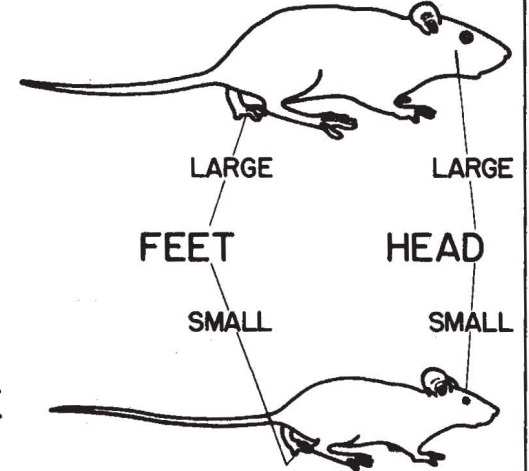
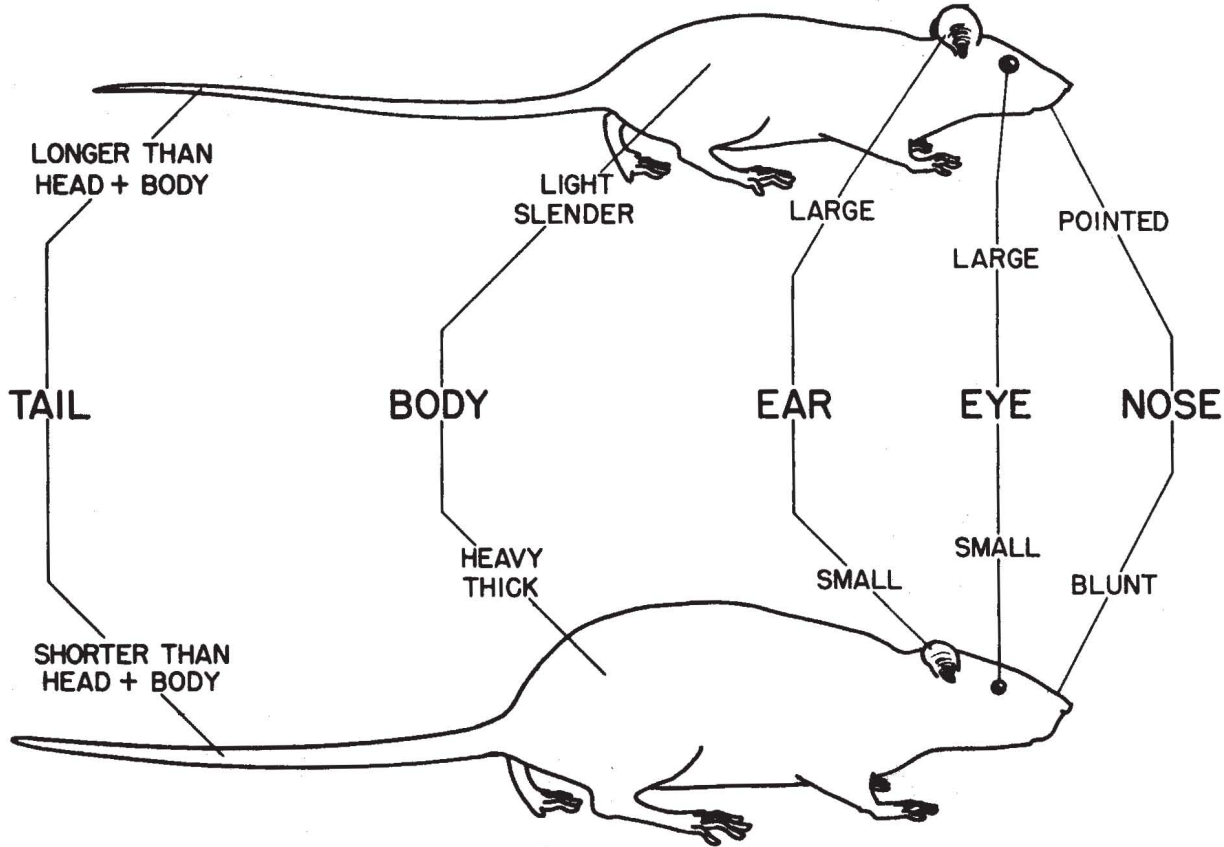
Harold George Scott and Margery R. Borom



DOMESTIC RODENT FIELD IDENTIFICATION
Robert Z. Brown

ROOF RAT *Rattus rattus*

YOUNG RAT

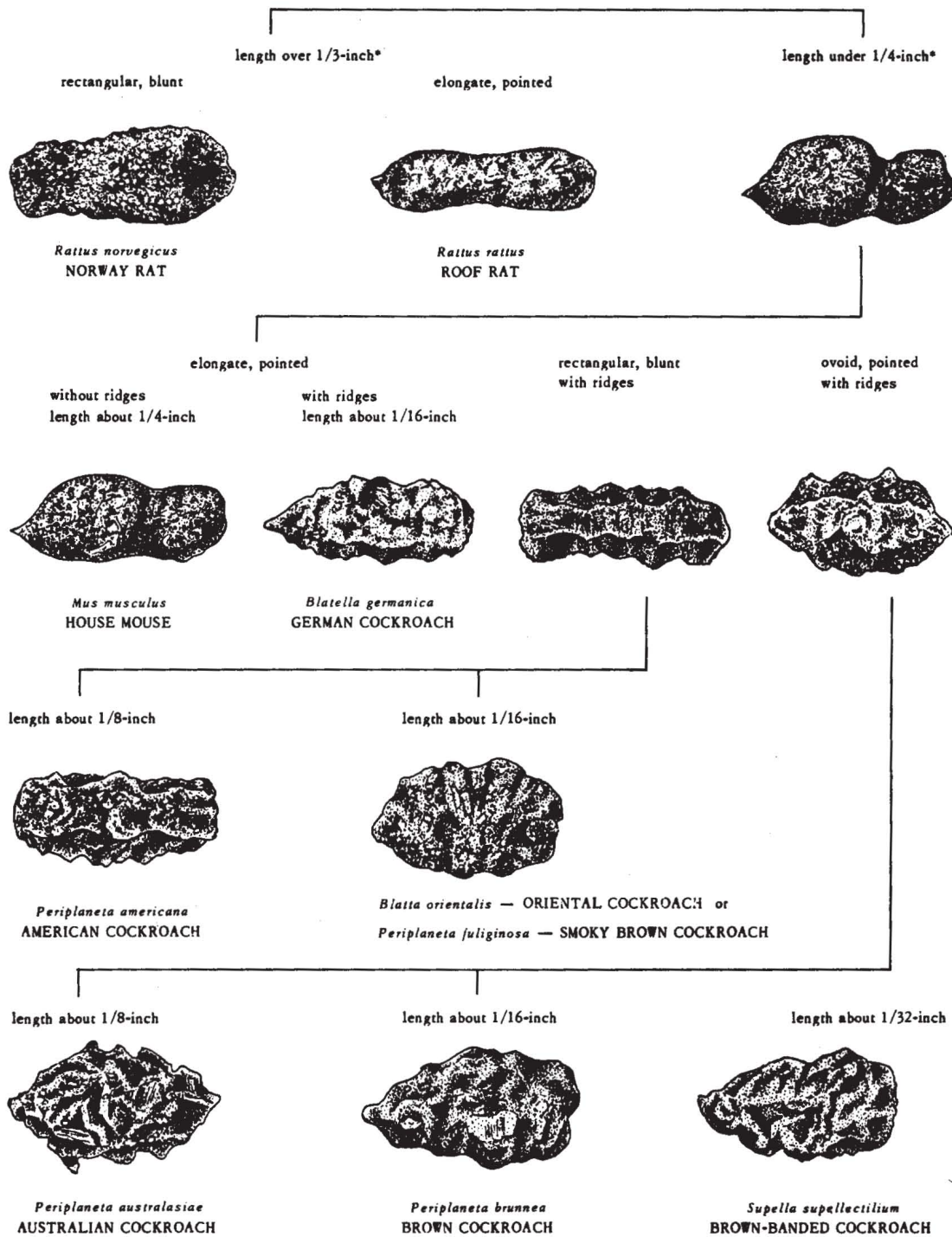


HOUSE MOUSE
Mus musculus

NORWAY RAT *Rattus norvegicus*



DOMESTIC RODENTS AND COCKROACHES: PICTORIAL KEY TO DROPPINGS
 Harold George Scott and Margery R. Borom



*All characteristics for average, dry, adult droppings. Study groups, not individual droppings.

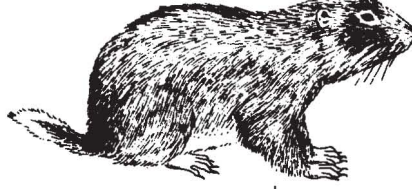
PRAIRIE DOGS: PICTORIAL KEY TO COMMON NORTH AMERICAN SPECIES (Cynomys)

Harry Weinburgh and Margery R. Borom

Tail black-tipped, long, more than
1/5 total length (72-115 mm.)



Tail white-tipped, short, less than
1/5 total length (40-68 mm.)

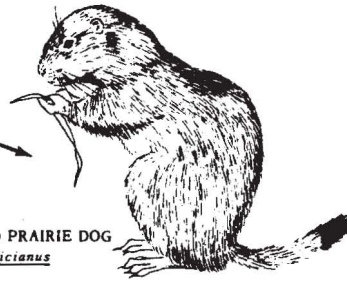


Black on tail covering most of distal half
MEXICO ONLY



MEXICAN PRAIRIE DOG
C. mexicanus

Black on tail confined to distal third
TEXAS TO SASKATCHEWAN



BLACK-TAILED PRAIRIE DOG
C. ludovicianus

Terminal half tail white without dark center



Terminal half tail with dark center (gray)



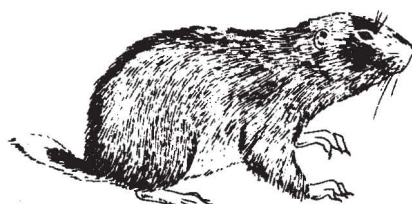
GUNNISON PRAIRIE DOG
C. gunnisoni

Summer color reddish (cinnamon or clay
color mixed with buff); darker on rump
CENTRAL VALLEYS OF UTAH



UTAH PRAIRIE DOG
C. parvidens

Summer color grayish (pinkish buff mixed with black);
dark patch on cheek and above eye
WYOMING, COLORADO, AND EASTERN UTAH



WHITE-TAILED PRAIRIE DOG
C. leucurus