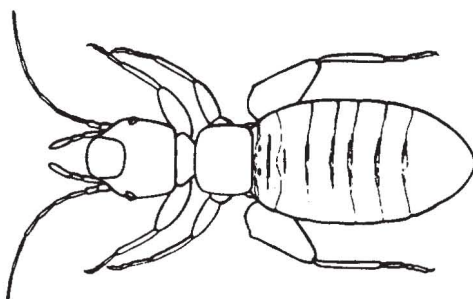


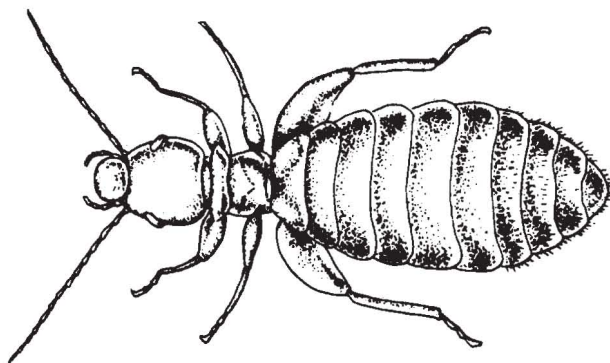
**PSOCIDS: KEY TO SOME SPECIES COMMONLY INFESTING STORED FOOD**  
**Harold George Scott and Chester J. Stojanovich**

1. Two distinct thoracic segments ..... 2  
 Three distinct thoracic segments (*Trogium pulsatorium*) ..... **DEATH WATCH**
2. Without large pronotal bristles ..... 3  
 With large pronotal bristles ..... 4
3. Eye with 7 facets; head and body brown (*Liposcelis bostrychophilus*) ..... **BANDED PSOCID**  
 Eye with 2-4 facets; head brown, body yellow (*Liposcelis paetus*) ..... **WAREHOUSE PSOCID**



Warehouse Psocid

4. Two to 5 large pronotal bristles (*Liposcelis entomophilus*) ..... **GRAIN PSOCID**  
 One large pronotal bristle (*Liposcelis terricolus*) ..... **BOOK LOUSE**



Book Louse