

SPIDERS: KEY TO SOME IMPORTANT UNITED STATES SPECIES

Harold George Scott & Chester J. Stojanovich

- 1. Fangs projecting horizontally (Fig. 1 A). (abdomen without tergites; tarsus with claw tufts and 2 claws) Dugesiella hentzi and others, TARANTULAS
- Fangs projecting vertically (Fig. 1 B)..... 2



Fig. 1 A

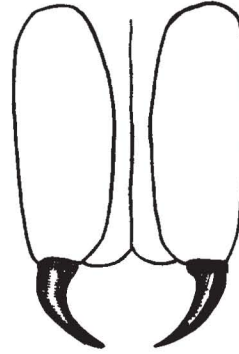
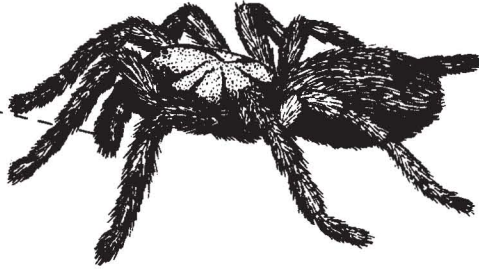


Fig. 1 B

- 2. Six eyes in 3 pairs; fiddle-shaped marking on cephalothorax (Fig. 2 A)..... Loxosceles reclusa..... BROWN RECLUSE SPIDERS

Eight eyes (shiny black with red spots; usually with red hourglass on underside of abdomen) (Fig. 2 B).
Latrodectus mactans..... BLACK WIDOW SPIDER

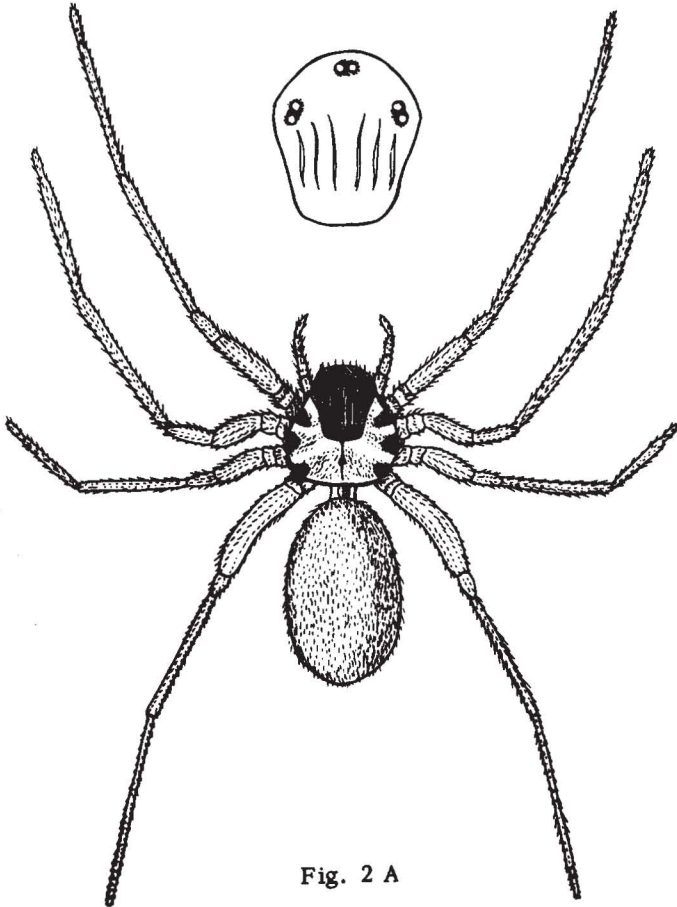


Fig. 2 A

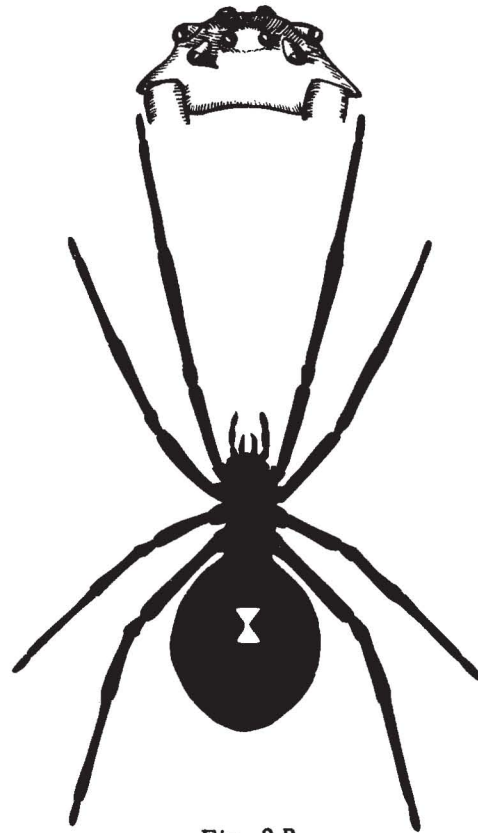


Fig. 2 B