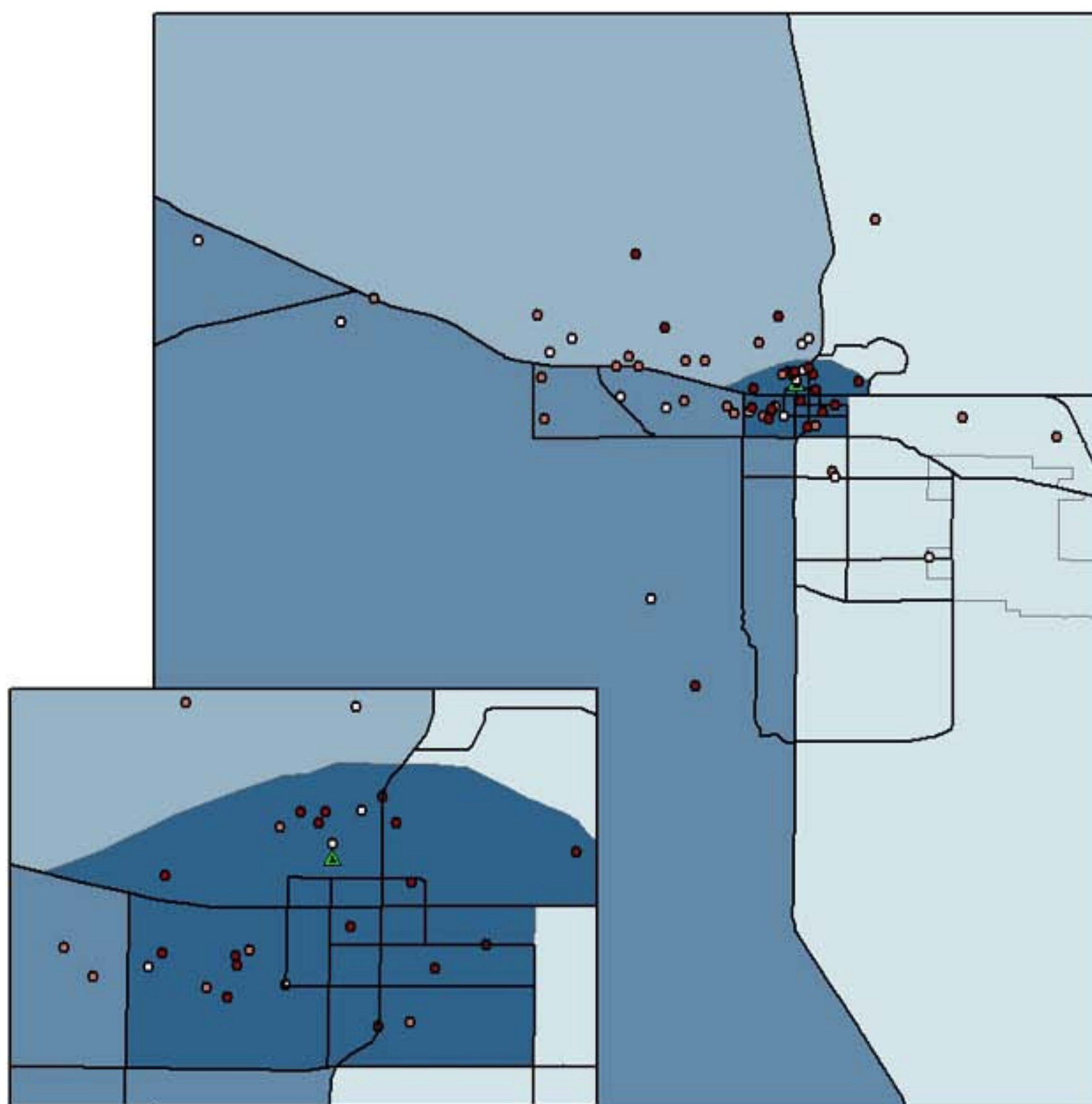


Map 3. Distribution of Tungsten Measured in Drinking Water Samples Collected at Current Residence of Study Participant, August 2001- October 2002.



Level of Tungsten Measured in Drinking Water (ppb)^{1,2}

- 0.00 - 0.80
- 0.81 - 7.07
- 7.08 - 217.30

2001 Population Size (number of people per census tract)

- 0 - 2500
- 2501 - 5000
- 5001 - 7500
- 7501 - 10000

— Roads

▲ Tungsten facility

¹ Data is displayed as tertiles.

² Health effects from exposure to any level of tungsten in drinking water has not been studied.