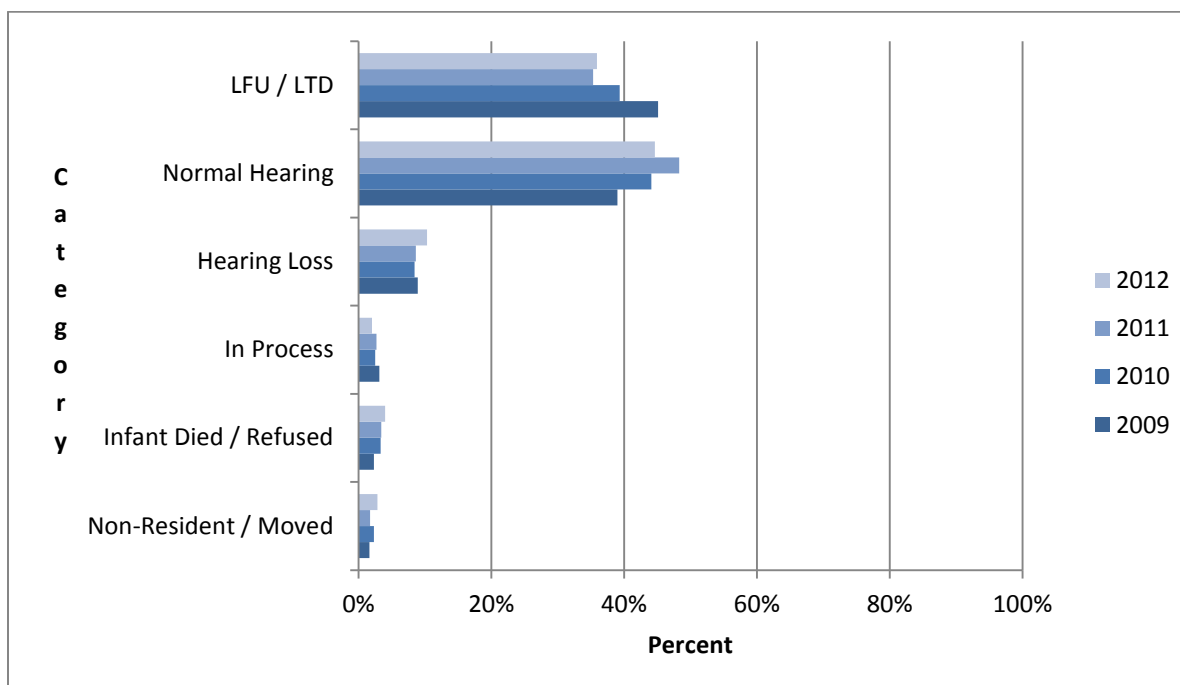


Documented Status of Infants Not Passing Hearing Screening United States, 2009–2012*



*The number of states and territories reporting screening data varied in each year

Data Summary

Year	Not Passing Hearing Screening	Non-Resident / Moved	Infant Died / Refused	In Process	Hearing Loss	Normal Hearing	LFU / LTD
2009	56,794	1.6%	2.3%	3.1%	8.9%	39.0%	45.1%
	(n=48)	(894)	(1,315)	(1,753)	(5,073)	(22,124)	(25,635)
2010	59,719	2.3%	3.3%	2.5%	8.4%	44.1%	39.3%
	(n=52)	(1,385)	(1,985)	(1,505)	(5,046)	(26,324)	(23,474)
2011	59,161	1.7%	3.4%	2.7%	8.6%	48.3%	35.3%
	(n=50)	(1,020)	(2,020)	(1,601)	(5,088)	(28,575)	(20,857)
2012	52,961	2.8%	4.0%	2.0%	10.3%	44.6%	35.9%
	(n=54)	(1,505)	(2,141)	(1,037)	(5,475)	(23,603)	(19,006)

Data Source: 2009 – 2012 CDC Early Hearing Detection and Intervention (EHDI) Hearing Screening and Follow-up Survey (HSFS).

Data Notes

- Hearing screening refers to the results of the final or most recent hearing screening an infant was documented to have received.
- In Process: Refers to infants that did not pass a hearing screening where a diagnosis had not yet been made because audiological diagnostic evaluation was still ongoing. Infants reported in this category must have been seen by an audiologist for diagnostic testing at least one time.

- LFU/LTD: Loss to follow-up / loss to documentation. Based on infants not passing the final or most hearing screening that were reported as not having a diagnosis for the reasons “Unable to contact / Unresponsive / Unknown.”
- n: Number of responding states and territories.