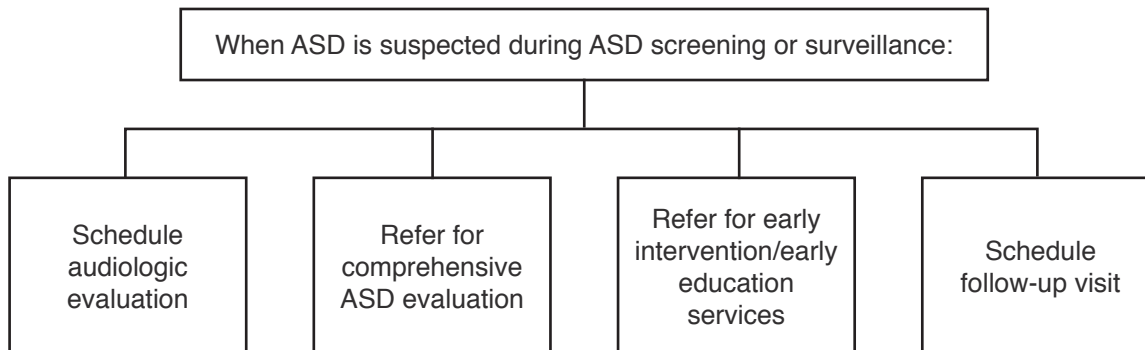


Handout I: Components of a Comprehensive Evaluation for ASD



- Detailed history from primary caregiver
- Medical history
 - Developmental history
 - Behavioral history
 - Family history
- Physical examination
 - Growth parameters, head circumference
 - General examination with special attention to skin and neurological findings
 - Inspection for any dysmorphic features
- Observation of child
 - Social interaction, response to name, joint attention
 - Play skills
 - Use of language
 - Presence of atypical behaviors or stereotypies
- Developmental/psychometric testing
- Speech/language testing
- Determination of categorical ASD diagnosis using DSM criteria and a standardized tool
 - Autism Observation Diagnostic Schedule, Second Edition (ADOS-2)
 - Autism Diagnostic Interview–Revised (ADI-R)
- Assessment of family’s knowledge regarding ASD, coping skills, resources, and supports
- Medical/genetic workup as indicated by clinical picture
 - High-resolution chromosomes
 - Array CGH
 - Fragile X testing
 - Rett syndrome/MECP2 testing in girls
 - Additional tests to consider include: PTEN gene analysis, EEG, metabolic studies, neuroimaging

Macferran K, Major N, Fussell J, High P. Components of a Comprehensive Evaluation for ASD. Developed for the *Autism Case Training: A Developmental Behavioral Pediatrics Curriculum*. 2011.