

## Notifiable Diseases and Mortality Tables

TABLE I. Provisional cases of selected\* infrequently reported notifiable diseases (<1,000 cases reported during the preceding year) — United States, week ending February 25, 2017 (8th week)<sup>†</sup> (Export data)

Disease	Current week	Cum 2017	5-year weekly average <sup>§</sup>	Total cases reported for previous years					States reporting cases during current week (No.)
				2016	2015	2014	2013	2012	
Anthrax	—	—	—	—	—	—	—	—	
Arboviral diseases neuroinvasive and nonneuroinvasive <sup>¶,**,†</sup> :									
Chikungunya virus disease	—	3	2	201	896	NN	NN	NN	
Eastern equine encephalitis virus disease	—	—	0	6	6	8	8	15	
Jamestown Canyon virus disease	—	—	—	6	11	11	22	2	
La Crosse virus disease	—	—	—	34	55	80	85	78	
Powassan virus disease	—	—	—	15	7	8	12	7	
St. Louis encephalitis virus disease	—	—	—	8	23	10	1	3	
Western equine encephalitis virus disease	—	—	—	—	—	—	—	—	
Botulism, total	—	9	3	190	195	161	152	168	
foodborne	—	—	0	33	37	15	4	27	
infant	—	8	2	132	138	127	136	123	
other (wound and unspecified)	—	1	0	25	20	19	12	18	
Brucellosis	—	6	1	120	126	92	99	114	
Chancroid	1	1	0	10	11	—	—	15	WA (1)
Cholera	—	—	0	4	5	5	14	17	
Cyclosporiasis**	—	2	1	505	645	388	784	123	
Diphtheria	—	—	0	—	—	1	—	1	
<i>Haemophilus influenzae</i> invasive disease (age <5 yrs) <sup>††</sup> :									
serotype b	—	1	1	21	29	40	31	30	
nontypeable	—	10	5	149	175	128	141	115	
non-b serotype	1	14	2	130	135	266	233	263	NY (1)
unknown serotype	2	32	5	236	167	39	34	37	FL (2)
Hansen's disease**	—	5	1	55	89	88	81	82	
Hantavirus**:									
Hantavirus infection (non-HPS)	—	—	0	3	3	NN	NN	NN	
Hantavirus Pulmonary Syndrome (HPS)	—	1	0	15	21	32	21	30	
Hemolytic uremic syndrome, postdiarrheal**	—	19	3	276	274	250	329	274	
Hepatitis B, perinatal virus infection <sup>§§</sup>	—	—	1	26	37	47	48	40	
Influenza-associated pediatric mortality <sup>**,¶¶</sup>	6	40	5	83	130	141	160	52	NY (1), OH (1), IN (1), NC (1), TX (2)
Leptospirosis**	—	6	0	70	40	38	NN	NN	
Listeriosis	5	63	8	712	768	769	735	727	RI (1), NY (1), OH (2), FL (1)
Measles***	—	20	4	78	188	667	187	55	
Meningococcal disease ( <i>Neisseria meningitidis</i> ) <sup>†††</sup> :									
serogroup ACWY	—	7	3	102	120	123	142	161	
serogroup B	—	9	3	76	111	89	99	110	
other serogroup	—	1	0	17	21	25	17	20	
unknown serogroup	5	37	5	169	120	196	298	260	NY (1), PA (1), MS (1), OR (2)
Novel influenza A virus infections <sup>§§§</sup>	—	—	—	23	7	3	21	313	
Plague	—	—	—	—	16	10	4	4	
Poliomyelitis, paralytic	—	—	—	—	—	—	1	—	
Polio virus infection, nonparalytic**	—	—	—	—	—	—	—	—	
Psittacosis**	—	—	0	9	4	8	6	2	
Q fever, total**	1	9	2	145	156	168	170	135	
acute	—	5	2	114	122	132	137	113	
chronic	1	4	1	31	34	36	33	22	TX (1)
Rabies, human	—	—	—	—	2	1	2	1	
SARS-CoV	—	—	—	—	—	—	—	—	
Smallpox	—	—	—	—	—	—	—	—	
Streptococcal toxic shock syndrome**	1	18	7	261	335	259	224	194	VA (1)
Syphilis, congenital <sup>¶¶¶</sup>	—	36	9	483	493	458	348	322	
Toxic shock syndrome (other than streptococcal)**	—	—	2	41	64	59	71	65	
Trichinellosis**	—	3	1	26	14	14	22	18	
Tularemia	—	2	0	202	314	180	203	149	
Typhoid fever (casued by <i>Salmonella typhi</i> )	2	35	7	340	367	349	338	354	OH (1), WA (1)
Vancomycin-intermediate <i>Staphylococcus aureus</i> **	—	6	3	101	183	212	248	134	
Vancomycin-resistant <i>Staphylococcus aureus</i> **	—	—	0	—	3	—	—	2	

See Table I footnotes on next page.

TABLE I. (Continued) Provisional cases of selected\* infrequently reported notifiable diseases (<1,000 cases reported during the preceding year) — United States, week ending February 25, 2017 (8th week)<sup>†</sup> (Export data)

Disease	Current week	Cum 2017	5-year weekly average <sup>§</sup>	Total cases reported for previous years					States reporting cases during current week (No.)
				2016	2015	2014	2013	2012	
Viral hemorrhagic fevers****.									
Crimean-Congo hemorrhagic fever	—	—	—	—	—	NP	NP	NP	
Ebola hemorrhagic fever	—	—	—	—	—	4	NP	NP	
Guanarito hemorrhagic fever	—	—	—	—	—	NP	NP	NP	
Junin hemorrhagic fever	—	—	—	—	—	NP	NP	NP	
Lassa fever	—	—	—	—	1	1	NP	NP	
Lujo virus	—	—	—	—	—	NP	NP	NP	
Machupo hemorrhagic fever	—	—	—	—	—	NP	NP	NP	
Marburg fever	—	—	—	—	—	NP	NP	NP	
Sabia-associated hemorrhagic fever	—	—	—	—	—	NP	NP	NP	
Yellow fever	—	—	—	—	—	—	—	—	
Zika virus disease, non-congenital†††	—	69	14	4,919	NN	NN	NN	NN	

—: No reported cases. N: Not reportable. NA: Not available. NN: Not Nationally Notifiable. NP: Nationally notifiable but not published. Cum: Cumulative year-to-date counts.

\* Case counts for reporting years 2016 and 2017 are provisional and subject to change. Data for years 2012 through 2015 are finalized. For further information on interpretation of these data, see <http://www.cdc.gov/nndss/document/ProvisionalNationalNotifiableDiseasesSurveillanceData20100927.pdf>.

<sup>†</sup> This table does not include cases from the U.S. territories. Three low incidence conditions, rubella, rubella congenital, and tetanus, are in Table II to facilitate case count verification with reporting jurisdictions.

<sup>§</sup> Calculated by summing the incidence counts for the current week, the 2 weeks preceding the current week, and the 2 weeks following the current week, for a total of 5 preceding years. Additional information is available at <http://www.cdc.gov/nndss/document/5yearweeklyaverage.pdf>.

<sup>¶</sup> Updated weekly reports from the Division of Vector-Borne Diseases, National Center for Emerging and Zoonotic Infectious Diseases (ArboNET Surveillance). Data for West Nile virus are available in Table II.

\*\* Not reportable in all jurisdictions. Data from states where the condition is not reportable are excluded from this table, except for the arboviral diseases and influenza-associated pediatric mortality. Reporting exceptions are available at <http://www.cdc.gov/nndss/downloads.html>.

†† Data for Haemophilus influenzae (all ages, all serotypes) are available in Table II.

<sup>§§</sup> In 2016, the nationally notifiable condition 'Hepatitis B Perinatal Infection' was renamed to 'Perinatal Hepatitis B Virus Infection' and reflects updates in the 2016 CSTE position statement for Perinatal Hepatitis B Virus Infection.

<sup>¶¶</sup> Updated weekly from reports to the Influenza Division, National Center for Immunization and Respiratory Diseases. Since October 2, 2016, 40 influenza-associated pediatric deaths occurring during the 2016-17 season have been reported.

\*\*\* No measles cases were reported for the current week.

††† Data for meningococcal disease (all serogroups) are available in Table II.

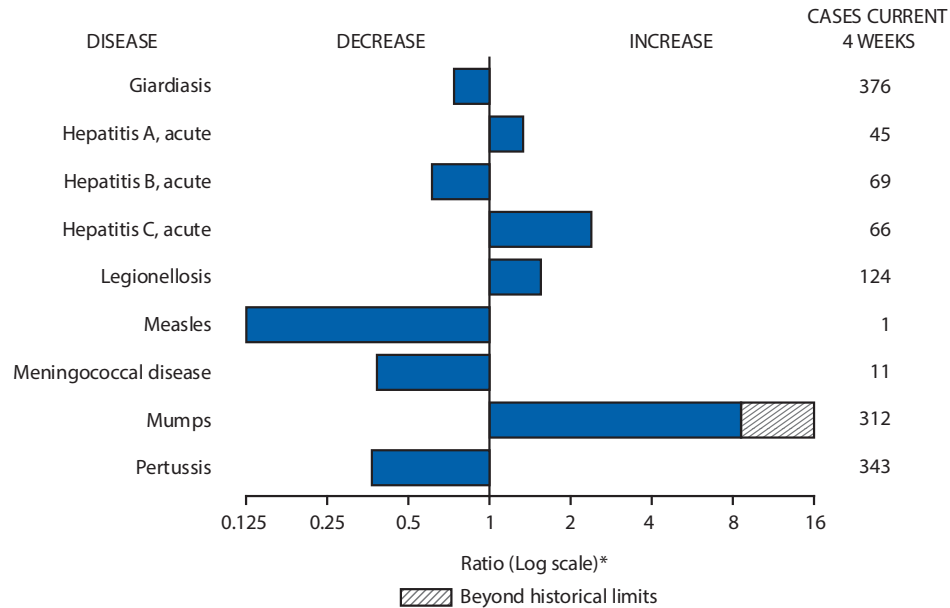
<sup>§§§</sup> Novel influenza A virus infections are human infections with influenza A viruses that are different from currently circulating human seasonal influenza viruses. With the exception of one avian lineage influenza A (H7N2) virus, all novel influenza A virus infections reported to CDC since 2011 have been variant influenza viruses. Total case counts are provided by the Influenza Division, National Center for Immunization and Respiratory Diseases (NCIRD).

<sup>¶¶¶</sup> Updated weekly from reports to the Division of STD Prevention, National Center for HIV/AIDS, Viral Hepatitis, STD, and TB Prevention.

\*\*\*\* Prior to 2015, CDC's National Notifiable Diseases Surveillance System (NNDSS) did not receive electronic data about incident cases of specific viral hemorrhagic fevers; instead data were collected in aggregate as "viral hemorrhagic fevers". Beginning in 2015, NNDSS has been updated to receive data for each of the viral hemorrhagic fevers listed below. In addition to the four cases of Ebola diagnosed in the United States to date in 2014, six residents of the United States have been medically evacuated to the United States for care after developing Ebola in West Africa. Ten of the 11 VHF cases reported for 2014 are confirmed as Ebola and one as Lassa fever.

†††† The Council of State and Territorial Epidemiologists approved position statement 16-ID-01 in June 2016, which modifies the previous case definition and naming convention from "Zika virus congenital infection" to "Zika virus disease, non-congenital".

**FIGURE I. Selected notifiable disease reports, United States, comparison of provisional 4-week totals February 25, 2017, with historical data**



\* Ratio of current 4-week total to mean of 15 4-week totals (from previous, comparable, and subsequent 4-week periods for the past 5 years). The point where the hatched area begins is based on the mean and two standard deviations of these 4-week totals.

**National Notifiable Diseases Data Team**  
 Yvette D. Dominique  
 Deborah A. Adams      Willie J. Anderson  
 Diana Harris Onweh      Alan W. Schley  
 Pearl C. Sharp

Data presented by the National Notifiable Diseases Data Team in the weekly MMWR are provisional, based on weekly reports to CDC by state health departments. Readers who have difficulty accessing this PDF file may access the HTML file at <http://www.cdc.gov/mmwr/volumes/66/wr/mm6608md.htm>. Address all inquiries about the MMWR Series, including material to be considered for publication, to Editor, MMWR Series, Mailstop E-90, CDC, 1600 Clifton Rd., N.E., Atlanta, GA 30329-4027 or to [mmwrq@cdc.gov](mailto:mmwrq@cdc.gov).

Morbidity and Mortality Weekly Report

TABLE II. Provisional cases of selected notifiable diseases (≥1,000 cases reported during the preceding year), and selected\* low frequency diseases, United States and U.S. territories, weeks ending February 25, 2017, and February 27, 2016 (8th week)<sup>†</sup> (Export data)

Reporting area	Babesiosis					Campylobacteriosis				
	Current week	Previous 52 weeks		Cum 2017	Cum 2016	Current week	Previous 52 weeks		Cum 2017	Cum 2016
		Med	Max				Med	Max		
<b>United States</b>	—	14	146	23	25	348	1,001	1,555	5,005	5,820
<b>New England</b>	—	5	108	4	17	4	51	98	240	330
Connecticut	—	2	32	—	5	—	10	34	50	71
Maine	—	0	10	3	1	3	4	12	28	20
Massachusetts	—	3	50	1	9	—	26	44	104	171
New Hampshire	—	0	2	—	—	—	4	10	31	24
Rhode Island	—	1	24	—	2	—	4	13	17	22
Vermont	—	0	5	—	—	1	4	10	10	22
<b>Mid. Atlantic</b>	—	6	41	15	5	66	134	229	781	878
New Jersey	—	1	20	5	1	—	30	65	136	215
New York (Upstate)	—	3	26	6	4	22	33	60	137	143
New York City	—	1	9	4	—	26	34	54	296	232
Pennsylvania	N	0	0	N	N	18	39	82	212	288
<b>E.N. Central</b>	—	1	7	2	—	43	149	242	611	920
Illinois	—	0	1	—	—	—	37	64	96	214
Indiana	—	0	0	—	—	—	17	31	51	98
Michigan	—	0	2	—	—	—	29	51	115	149
Ohio	—	0	0	—	—	40	35	63	208	288
Wisconsin	—	1	7	2	—	3	29	59	141	171
<b>W.N. Central</b>	—	0	1	—	1	26	72	155	286	413
Iowa	—	0	1	—	—	11	18	44	85	107
Kansas	N	0	0	N	N	—	12	31	35	64
Minnesota	—	0	0	—	—	—	0	1	—	—
Missouri	N	0	0	N	N	10	22	57	107	128
Nebraska	—	0	1	—	—	5	10	26	41	45
North Dakota	—	0	0	—	1	—	0	9	—	21
South Dakota	—	0	0	—	—	—	8	24	18	48
<b>S. Atlantic</b>	—	0	4	2	1	50	137	215	718	953
Delaware	—	0	1	—	—	—	3	9	6	17
District of Columbia	N	0	0	N	N	—	0	0	—	—
Florida	N	0	0	N	N	31	39	59	299	296
Georgia	N	0	0	N	N	8	17	34	97	125
Maryland	—	0	3	2	—	7	15	32	96	115
North Carolina	N	0	0	N	N	—	26	49	77	149
South Carolina	—	0	1	—	1	—	6	15	37	51
Virginia	N	0	0	N	N	4	26	64	95	181
West Virginia	—	0	0	—	—	—	4	14	11	19
<b>E.S. Central</b>	—	0	1	—	—	11	43	74	265	309
Alabama	—	0	0	—	—	—	13	25	52	93
Kentucky	—	0	0	—	—	4	13	26	85	99
Mississippi	N	0	0	N	N	5	5	13	52	28
Tennessee	—	0	1	—	—	2	13	30	76	89
<b>W.S. Central</b>	—	0	1	—	—	38	110	234	439	243
Arkansas	—	0	0	—	—	3	9	29	44	40
Louisiana	—	0	1	—	—	8	5	21	57	35
Oklahoma	N	0	0	N	N	—	20	45	37	95
Texas	—	0	1	—	—	27	78	204	301	73
<b>Mountain</b>	—	0	1	—	—	35	79	143	396	479
Arizona	—	0	0	—	—	8	22	51	120	142
Colorado	N	0	0	N	N	20	18	45	117	106
Idaho	N	0	0	N	N	4	8	20	42	49
Montana	—	0	1	—	—	2	6	14	32	40
Nevada	N	0	0	N	N	1	3	12	19	25
New Mexico	N	0	0	N	N	—	9	25	38	49
Utah	—	0	1	—	—	—	8	27	15	56
Wyoming	—	0	0	—	—	—	3	9	13	12
<b>Pacific</b>	—	0	1	—	1	75	235	341	1,269	1,295
Alaska	N	0	0	N	N	2	2	7	9	9
California	—	0	1	—	—	56	165	239	1,047	1,028
Hawaii	N	0	0	N	N	5	8	25	49	48
Oregon	—	0	1	—	1	12	19	39	107	94
Washington	—	0	0	—	—	—	28	151	57	116
<b>Territories</b>										
American Samoa	U	0	0	U	U	—	0	0	—	—
C.N.M.I.	—	—	—	—	—	—	—	—	—	—
Guam	—	0	0	—	—	—	0	0	—	—
Puerto Rico	N	0	0	N	N	—	1	2	4	7
U.S. Virgin Islands	N	0	0	N	N	—	0	0	—	—

C.N.M.I.: Commonwealth of Northern Mariana Islands.

U: Unavailable. —: No reported cases. N: Not reportable. NN: Not Nationally Notifiable. NP: Nationally notifiable but not published. Cum: Cumulative year-to-date counts. Med: Median. Max: Maximum.

\* Three low incidence conditions, rubella, rubella congenital, and tetanus, are in Table II to facilitate case count verification with reporting jurisdictions.

<sup>†</sup> Case counts for reporting years 2016 and 2017 are provisional and subject to change. For further information on interpretation of these data, see <http://www.cdc.gov/nndss/document/ProvisionalNationalNotifiableDiseasesSurveillanceData20100927.pdf>. Data for tuberculosis are displayed in Table IV, which appears quarterly.

Morbidity and Mortality Weekly Report

TABLE II. (Continued) Provisional cases of selected notifiable diseases (≥1,000 cases reported during the preceding year), and selected\* low frequency diseases, United States and U.S. territories, weeks ending February 25, 2017, and February 27, 2016 (8th week)<sup>†</sup> (Export data)

Reporting area	<i>Chlamydia trachomatis</i> infection					Coccidioidomycosis				
	Current week	Previous 52 weeks		Cum 2017	Cum 2016	Current week	Previous 52 weeks		Cum 2017	Cum 2016
		Med	Max				Med	Max		
<b>United States</b>	13,450	29,491	32,212	178,763	239,825	110	207	335	1,228	1,635
<b>New England</b>	294	1,059	1,198	5,723	8,555	—	0	1	—	—
Connecticut	2	237	374	347	1,888	N	0	0	N	N
Maine	67	81	157	760	584	N	0	0	N	N
Massachusetts	—	513	597	2,982	4,286	N	0	0	N	N
New Hampshire	153	104	218	1,245	950	—	0	1	—	—
Rhode Island	72	74	484	275	514	—	0	1	—	—
Vermont	—	21	95	114	333	N	0	0	N	N
<b>Mid. Atlantic</b>	2,244	3,916	4,272	29,433	31,694	—	0	0	—	—
New Jersey	251	648	727	4,722	6,227	N	0	0	N	N
New York (Upstate)	726	815	1,936	5,767	5,782	N	0	0	N	N
New York City	561	1,306	1,557	10,262	10,414	N	0	0	N	N
Pennsylvania	706	1,122	1,264	8,682	9,271	N	0	0	N	N
<b>E.N. Central</b>	1,174	4,302	5,008	24,546	37,449	2	1	7	8	9
Illinois	57	1,172	1,316	4,553	11,054	N	0	0	N	N
Indiana	292	592	764	4,545	5,107	N	0	0	N	N
Michigan	259	844	1,127	4,403	7,068	—	0	3	3	6
Ohio	189	1,161	1,274	6,957	10,042	2	0	4	5	2
Wisconsin	377	499	627	4,088	4,178	—	0	2	—	1
<b>W.N. Central</b>	455	1,821	2,062	9,183	14,850	—	2	8	1	6
Iowa	130	249	302	1,884	2,089	N	0	0	N	N
Kansas	69	239	283	1,756	1,944	N	0	0	N	N
Minnesota	—	435	527	—	3,588	—	1	4	—	5
Missouri	172	590	707	3,752	4,744	—	0	2	—	1
Nebraska	75	150	274	1,024	1,172	—	0	1	1	—
North Dakota	9	59	93	309	595	—	0	1	—	—
South Dakota	—	79	107	458	718	N	0	0	N	N
<b>S. Atlantic</b>	2,139	5,625	7,095	24,677	46,415	—	0	2	—	2
Delaware	131	100	199	875	768	—	0	1	—	1
District of Columbia	—	153	294	673	1,183	—	0	0	—	—
Florida	1,111	1,811	2,790	12,953	13,416	N	0	0	N	N
Georgia	—	892	1,159	—	7,033	N	0	0	N	N
Maryland	260	591	1,261	2,811	3,186	—	0	2	—	1
North Carolina	1	1,019	1,184	2,052	9,283	N	0	0	N	N
South Carolina	558	565	789	4,622	4,698	N	0	0	N	N
Virginia	—	551	1,319	—	6,107	N	0	0	N	N
West Virginia	78	91	182	691	741	N	0	0	N	N
<b>E.S. Central</b>	416	1,806	2,419	8,954	12,821	—	0	0	—	—
Alabama	—	508	735	2,154	4,024	N	0	0	N	N
Kentucky	80	389	687	2,210	652	—	0	0	—	—
Mississippi	158	312	674	1,173	2,973	N	0	0	N	N
Tennessee	178	616	818	3,417	5,172	N	0	0	N	N
<b>W.S. Central</b>	3,223	3,967	5,433	31,297	31,569	—	0	1	—	4
Arkansas	104	268	508	829	2,341	—	0	1	—	—
Louisiana	80	648	1,983	5,295	3,799	—	0	1	—	4
Oklahoma	30	282	340	1,680	2,669	N	0	0	N	N
Texas	3,009	2,784	4,025	23,493	22,760	N	0	0	N	N
<b>Mountain</b>	1,062	1,997	2,636	12,755	15,849	97	121	161	953	1,034
Arizona	363	648	1,075	3,753	4,780	97	118	157	940	1,008
Colorado	391	492	1,192	4,099	3,457	N	0	0	N	N
Idaho	—	104	213	458	1,215	N	0	0	N	N
Montana	—	81	108	—	743	—	0	2	2	3
Nevada	173	210	291	1,477	1,597	—	1	5	11	17
New Mexico	34	236	399	1,276	2,102	—	0	3	—	3
Utah	66	182	218	1,451	1,596	—	1	3	—	3
Wyoming	35	35	55	241	359	—	0	1	—	—
<b>Pacific</b>	2,443	4,989	5,506	32,195	40,623	11	78	193	266	580
Alaska	—	109	152	—	799	N	0	0	N	N
California	1,611	3,809	4,294	24,948	31,611	11	77	193	262	579
Hawaii	2	133	174	673	1,000	N	0	0	N	N
Oregon	363	331	440	2,719	2,362	—	0	3	4	1
Washington	467	573	1,078	3,855	4,851	N	0	0	N	N
<b>Territories</b>										
American Samoa	—	0	0	—	—	N	0	0	N	N
C.N.M.I.	—	—	—	—	—	—	—	—	—	—
Guam	—	0	0	—	—	—	0	0	—	—
Puerto Rico	—	126	481	1,214	846	N	0	0	N	N
U.S. Virgin Islands	—	8	28	—	113	—	0	0	—	—

C.N.M.I.: Commonwealth of Northern Mariana Islands.

U: Unavailable. —: No reported cases. N: Not reportable. NN: Not Nationally Notifiable. NP: Nationally notifiable but not published. Cum: Cumulative year-to-date counts. Med: Median. Max: Maximum.

\* Three low incidence conditions, rubella, rubella congenital, and tetanus, are in Table II to facilitate case count verification with reporting jurisdictions.

<sup>†</sup> Case counts for reporting years 2016 and 2017 are provisional and subject to change. For further information on interpretation of these data, see <http://www.cdc.gov/nndss/document/ProvisionalNationalNotifiableDiseasesSurveillanceData20100927.pdf>. Data for tuberculosis are displayed in Table IV, which appears quarterly.

Morbidity and Mortality Weekly Report

TABLE II. (Continued) Provisional cases of selected notifiable diseases (≥1,000 cases reported during the preceding year), and selected\* low frequency diseases, United States and U.S. territories, weeks ending February 25, 2017, and February 27, 2016 (8th week)<sup>†</sup> (Export data)

Reporting area	Cryptosporidiosis					Dengue Virus Infections									
	Current week	Previous 52 weeks		Cum 2017	Cum 2016	Dengue <sup>§</sup>					Severe Dengue				
		Med	Max			Current week	Previous 52 weeks Med	Previous 52 weeks Max	Cum 2017	Cum 2016	Current week	Previous 52 weeks Med	Previous 52 weeks Max	Cum 2017	Cum 2016
<b>United States</b>	37	158	734	635	1,006	—	11	33	11	231	—	0	1	—	—
<b>New England</b>	—	7	23	26	31	—	0	1	—	9	—	0	0	—	—
Connecticut	—	1	5	4	6	—	0	1	—	4	—	0	0	—	—
Maine	—	1	4	4	2	—	0	1	—	—	—	0	0	—	—
Massachusetts	—	3	14	13	17	—	0	1	—	3	—	0	0	—	—
New Hampshire	—	1	7	—	3	—	0	0	—	—	—	0	0	—	—
Rhode Island	—	0	2	2	2	—	0	1	—	2	—	0	0	—	—
Vermont	—	1	10	3	1	—	0	1	—	—	—	0	0	—	—
<b>Mid. Atlantic</b>	3	14	64	65	103	—	3	10	—	51	—	0	0	—	—
New Jersey	—	1	18	—	13	—	0	6	—	13	—	0	0	—	—
New York (Upstate)	—	5	25	13	27	—	1	3	—	3	—	0	0	—	—
New York City	1	4	12	25	18	—	1	7	—	28	—	0	0	—	—
Pennsylvania	2	7	27	27	45	—	0	2	—	7	—	0	0	—	—
<b>E.N. Central</b>	6	36	294	130	226	—	1	7	3	16	—	0	1	—	—
Illinois	—	5	50	13	30	—	0	3	—	10	—	0	0	—	—
Indiana	—	2	9	11	29	—	0	2	—	1	—	0	1	—	—
Michigan	—	7	19	25	39	—	0	2	1	2	—	0	0	—	—
Ohio	4	9	207	34	61	—	0	2	2	2	—	0	0	—	—
Wisconsin	2	11	62	47	67	—	0	2	—	1	—	0	0	—	—
<b>W.N. Central</b>	4	26	107	66	112	—	0	4	—	6	—	0	0	—	—
Iowa	1	9	65	21	33	—	0	1	—	—	—	0	0	—	—
Kansas	—	2	7	4	6	—	0	1	—	—	—	0	0	—	—
Minnesota	—	0	0	—	—	—	0	1	—	3	—	0	0	—	—
Missouri	2	6	22	19	27	—	0	2	—	3	—	0	0	—	—
Nebraska	1	3	16	16	21	—	0	1	—	—	—	0	0	—	—
North Dakota	—	0	5	—	2	—	0	1	—	—	—	0	0	—	—
South Dakota	—	3	7	6	23	—	0	1	—	—	—	0	0	—	—
<b>S. Atlantic</b>	8	25	79	112	203	—	2	7	—	36	—	0	1	—	—
Delaware	—	0	2	—	4	—	0	1	—	1	—	0	0	—	—
District of Columbia	—	0	1	—	—	—	0	1	—	1	—	0	0	—	—
Florida	3	11	31	44	81	—	0	2	—	16	—	0	0	—	—
Georgia	4	5	26	33	48	—	0	2	—	3	—	0	0	—	—
Maryland	1	2	10	7	12	—	0	1	—	6	—	0	0	—	—
North Carolina	—	3	17	9	21	—	0	3	—	1	—	0	0	—	—
South Carolina	—	1	8	8	14	—	0	2	—	—	—	0	1	—	—
Virginia	—	4	12	9	20	—	0	3	—	8	—	0	0	—	—
West Virginia	—	0	5	2	3	—	0	0	—	—	—	0	0	—	—
<b>E.S. Central</b>	5	10	43	38	57	—	0	2	4	—	—	0	0	—	—
Alabama	1	5	27	14	18	—	0	1	—	—	—	0	0	—	—
Kentucky	1	2	7	6	16	—	0	1	—	—	—	0	0	—	—
Mississippi	1	1	3	4	4	—	0	2	2	—	—	0	0	—	—
Tennessee	2	3	9	14	19	—	0	1	2	—	—	0	0	—	—
<b>W.S. Central</b>	2	17	39	63	94	—	1	4	—	4	—	0	1	—	—
Arkansas	—	1	4	6	10	—	0	1	—	—	—	0	0	—	—
Louisiana	—	1	4	12	15	—	0	1	—	—	—	0	0	—	—
Oklahoma	1	3	9	7	15	—	0	1	—	2	—	0	0	—	—
Texas	1	12	33	38	54	—	1	4	—	2	—	0	1	—	—
<b>Mountain</b>	7	15	122	72	80	—	0	4	—	5	—	0	1	—	—
Arizona	3	3	82	18	8	—	0	2	—	2	—	0	0	—	—
Colorado	3	4	14	25	14	—	0	2	—	—	—	0	0	—	—
Idaho	—	2	10	9	17	—	0	1	—	1	—	0	0	—	—
Montana	—	1	5	2	5	—	0	1	—	—	—	0	0	—	—
Nevada	—	0	2	1	4	—	0	2	—	1	—	0	1	—	—
New Mexico	—	1	7	7	7	—	0	1	—	—	—	0	0	—	—
Utah	1	2	24	10	23	—	0	1	—	1	—	0	0	—	—
Wyoming	—	0	3	—	2	—	0	0	—	—	—	0	0	—	—
<b>Pacific</b>	2	15	53	63	100	—	3	14	4	102	—	0	1	—	—
Alaska	—	0	1	3	4	—	0	1	—	—	—	0	0	—	—
California	1	8	17	40	58	—	3	14	3	46	—	0	0	—	—
Hawaii	—	0	3	—	—	—	0	2	1	47	—	0	0	—	—
Oregon	1	6	26	16	38	—	0	2	—	3	—	0	0	—	—
Washington	—	0	34	4	—	—	0	2	—	6	—	0	1	—	—
<b>Territories</b>															
American Samoa	N	0	0	N	N	—	0	0	—	—	—	0	0	—	—
C.N.M.I.	—	—	—	—	—	—	—	—	—	—	—	—	—	—	—
Guam	—	0	0	—	—	—	1	1	—	—	—	0	0	—	—
Puerto Rico	—	0	1	—	—	—	2	13	2	77	—	0	0	—	—
U.S. Virgin Islands	—	0	0	—	—	—	1	3	1	12	—	0	0	—	—

C.N.M.I.: Commonwealth of Northern Mariana Islands.

U: Unavailable. —: No reported cases. N: Not reportable. NN: Not Nationally Notifiable. NP: Nationally notifiable but not published. Cum: Cumulative year-to-date counts. Med: Median. Max: Maximum.

\* Three low incidence conditions, rubella, rubella congenital, and tetanus, are in Table II to facilitate case count verification with reporting jurisdictions.

<sup>†</sup> Case counts for reporting years 2016 and 2017 are provisional and subject to change. For further information on interpretation of these data, see <http://www.cdc.gov/nndss/document/ProvisionalNationalNotifiableDiseasesSurveillanceData20100927.pdf>. Data for tuberculosis are displayed in Table IV, which appears quarterly.

<sup>§</sup> Includes data for dengue and dengue-like illness.

Morbidity and Mortality Weekly Report

TABLE II. (Continued) Provisional cases of selected notifiable diseases (≥1,000 cases reported during the preceding year), and selected\* low frequency diseases, United States and U.S. territories, weeks ending February 25, 2017, and February 27, 2016 (8th week)<sup>†</sup> (Export data)

Reporting area	Ehrlichiosis and Anaplasmosis <sup>§</sup>														
	<i>Ehrlichia chaffeensis</i>					<i>Anaplasma phagocytophilum</i>					Undetermined				
	Current week	Previous 52 weeks		Cum 2017	Cum 2016	Current week	Previous 52 weeks		Cum 2017	Cum 2016	Current week	Previous 52 weeks		Cum 2017	Cum 2016
	Med	Max				Med	Max				Med	Max			
<b>United States</b>	1	13	91	16	22	5	44	200	22	44	—	2	10	3	3
<b>New England</b>	—	1	8	2	3	1	19	100	5	23	—	0	1	—	1
Connecticut	—	0	0	—	—	—	0	4	—	—	N	0	0	N	N
Maine	—	0	1	1	—	1	3	31	4	3	—	0	1	—	1
Massachusetts	—	0	2	—	—	—	11	69	1	14	—	0	0	—	—
New Hampshire	—	0	1	—	1	—	0	6	—	—	—	0	0	—	—
Rhode Island	—	0	6	—	1	—	0	18	—	4	—	0	0	—	—
Vermont	—	0	1	1	1	—	2	26	—	2	—	0	1	—	—
<b>Mid. Atlantic</b>	1	3	17	5	8	3	14	61	13	14	—	0	3	2	2
New Jersey	—	0	7	1	1	—	1	13	1	2	—	0	2	—	—
New York (Upstate)	1	2	13	1	7	3	12	55	6	9	—	0	2	1	—
New York City	—	0	3	3	—	—	1	5	6	3	—	0	1	1	2
Pennsylvania	—	0	0	—	—	—	0	1	—	—	—	0	1	—	—
<b>E.N. Central</b>	—	1	8	2	—	—	6	42	2	1	—	1	6	—	—
Illinois	—	0	5	1	—	—	0	2	—	—	—	0	0	—	—
Indiana	—	0	0	—	—	—	0	0	—	—	—	0	2	—	—
Michigan	—	0	2	1	—	—	0	1	—	1	—	0	0	—	—
Ohio	—	0	1	—	—	—	0	2	—	—	—	0	0	—	—
Wisconsin	—	0	3	—	—	—	6	41	2	—	—	0	4	—	—
<b>W.N. Central</b>	—	2	25	1	3	—	0	4	1	1	—	0	2	—	—
Iowa	—	0	1	—	—	—	0	1	—	—	—	0	1	—	—
Kansas	—	0	5	—	2	—	0	1	—	—	—	0	1	—	—
Minnesota	—	0	0	—	—	—	0	0	—	—	—	0	0	—	—
Missouri	—	2	20	1	1	—	0	2	1	1	—	0	1	—	—
Nebraska	—	0	2	—	—	—	0	1	—	—	—	0	0	—	—
North Dakota	—	0	1	—	—	—	0	2	—	—	—	0	1	—	—
South Dakota	—	0	0	—	—	—	0	1	—	—	—	0	0	—	—
<b>S. Atlantic</b>	—	3	18	2	4	1	0	4	1	5	—	0	2	—	—
Delaware	—	0	3	—	—	—	0	1	—	1	—	0	1	—	—
District of Columbia	—	0	1	—	—	N	0	0	N	N	—	0	0	—	—
Florida	—	0	6	1	—	—	0	1	—	2	—	0	0	—	—
Georgia	—	0	2	—	—	—	0	0	—	1	—	0	1	—	—
Maryland	—	0	7	1	1	—	0	2	—	—	—	0	1	—	—
North Carolina	—	0	5	—	2	—	0	2	—	1	—	0	0	—	—
South Carolina	—	0	0	—	—	—	0	0	—	—	—	0	0	—	—
Virginia	—	1	10	—	1	1	0	2	1	—	—	0	2	—	—
West Virginia	—	0	1	—	—	—	0	0	—	—	—	0	0	—	—
<b>E.S. Central</b>	—	1	12	1	1	—	0	3	—	—	—	0	2	—	—
Alabama	—	0	2	—	—	—	0	1	—	—	—	0	1	—	—
Kentucky	—	0	4	1	1	—	0	1	—	—	—	0	1	—	—
Mississippi	—	0	2	—	—	—	0	0	—	—	—	0	0	—	—
Tennessee	—	1	10	—	—	—	0	2	—	—	—	0	2	—	—
<b>W.S. Central</b>	—	2	18	3	3	—	0	5	—	—	—	0	1	—	—
Arkansas	—	2	16	3	1	—	0	5	—	—	—	0	0	—	—
Louisiana	—	0	0	—	1	—	0	0	—	—	—	0	0	—	—
Oklahoma	—	0	1	—	—	—	0	0	—	—	—	0	0	—	—
Texas	—	0	2	—	1	—	0	1	—	—	—	0	1	—	—
<b>Mountain</b>	—	0	1	—	—	—	0	1	—	—	—	0	1	1	—
Arizona	—	0	0	—	—	—	0	0	—	—	—	0	1	1	—
Colorado	N	0	0	N	N	N	0	0	N	N	N	0	0	N	N
Idaho	N	0	0	N	N	N	0	0	N	N	N	0	0	N	N
Montana	—	0	1	—	—	—	0	0	—	—	—	0	0	—	—
Nevada	—	0	0	—	—	—	0	0	—	—	—	0	0	—	—
New Mexico	N	0	0	N	N	N	0	0	N	N	N	0	0	N	N
Utah	—	0	0	—	—	—	0	0	—	—	—	0	0	—	—
Wyoming	—	0	0	—	—	—	0	1	—	—	—	0	0	—	—
<b>Pacific</b>	—	0	1	—	—	—	0	1	—	—	—	0	2	—	—
Alaska	N	0	0	N	N	N	0	0	N	N	N	0	0	N	N
California	—	0	0	—	—	—	0	0	—	—	—	0	2	—	—
Hawaii	N	0	0	N	N	N	0	0	N	N	N	0	0	N	N
Oregon	—	0	1	—	—	—	0	1	—	—	—	0	0	—	—
Washington	—	0	0	—	—	—	0	0	—	—	—	0	0	—	—
<b>Territories</b>															
American Samoa	N	0	0	N	N	N	0	0	N	N	N	0	0	N	N
C.N.M.I.	—	—	—	—	—	—	—	—	—	—	—	—	—	—	—
Guam	N	0	0	N	N	N	0	0	N	N	N	0	0	N	N
Puerto Rico	N	0	0	N	N	N	0	0	N	N	N	0	0	N	N
U.S. Virgin Islands	—	0	0	—	—	—	0	0	—	—	—	0	0	—	—

C.N.M.I.: Commonwealth of Northern Mariana Islands.

U: Unavailable. —: No reported cases. N: Not reportable. NN: Not Nationally Notifiable. NP: Nationally notifiable but not published. Cum: Cumulative year-to-date counts. Med: Median. Max: Maximum.

\* Three low incidence conditions, rubella, rubella congenital, and tetanus, are in Table II to facilitate case count verification with reporting jurisdictions.

† Case counts for reporting years 2016 and 2017 are provisional and subject to change. For further information on interpretation of these data, see

<http://wwwn.cdc.gov/nndss/document/ProvisionalNationallyNotifiableDiseasesSurveillanceData20100927.pdf>. Data for tuberculosis are displayed in Table IV, which appears quarterly.

§ Cumulative total *E. ewingii* cases reported for year 2017 = 1, and 17 cases reported for 2016.

Morbidity and Mortality Weekly Report

TABLE II. (Continued) Provisional cases of selected notifiable diseases (≥1,000 cases reported during the preceding year), and selected\* low frequency diseases, United States and U.S. territories, weeks ending February 25, 2017, and February 27, 2016 (8th week)<sup>†</sup> (Export data)

Reporting area	Giardiasis					Gonorrhea					Haemophilus influenzae, invasive <sup>§</sup> (all ages, all serotypes)				
	Current week	Previous 52 weeks		Cum 2017	Cum 2016	Current week	Previous 52 weeks		Cum 2017	Cum 2016	Current week	Previous 52 weeks		Cum 2017	Cum 2016
		Med	Max				Med	Max				Med	Max		
<b>United States</b>	90	272	439	1,286	1,974	3,913	8,526	10,067	55,600	65,065	30	81	160	628	845
<b>New England</b>	1	21	36	86	166	20	164	403	864	1,329	—	5	16	27	41
Connecticut	—	5	11	21	38	4	49	130	46	290	—	1	4	—	11
Maine	—	2	7	7	16	—	8	16	59	85	—	0	3	4	4
Massachusetts	—	11	22	47	87	—	96	142	633	696	—	2	8	20	22
New Hampshire	—	2	6	7	15	1	8	51	66	139	—	0	3	1	2
Rhode Island	1	1	8	4	10	15	8	205	50	95	—	0	11	—	—
Vermont	N	0	0	N	N	—	2	6	10	24	—	0	2	2	2
<b>Mid. Atlantic</b>	30	48	87	280	369	622	1,037	1,204	8,013	7,668	8	12	22	90	130
New Jersey	—	2	13	2	69	59	150	197	1,133	1,433	—	2	8	13	28
New York (Upstate)	13	17	42	83	119	186	186	451	1,414	1,211	4	4	15	25	29
New York City	16	17	27	144	112	213	396	506	3,145	2,744	2	2	7	17	21
Pennsylvania	1	12	35	51	69	164	289	353	2,321	2,280	2	4	10	35	52
<b>E.N. Central</b>	6	26	152	139	212	285	1,226	1,450	7,045	10,030	3	14	31	84	153
Illinois	N	0	0	N	N	21	311	421	1,199	2,793	—	4	11	20	39
Indiana	—	3	9	8	22	88	181	263	1,464	1,479	—	2	9	10	19
Michigan	—	9	24	44	66	45	227	299	1,012	1,711	—	3	8	17	32
Ohio	3	5	135	51	64	—	389	475	2,317	3,009	3	3	8	33	34
Wisconsin	3	9	86	36	60	131	125	149	1,053	1,038	—	1	6	4	29
<b>W.N. Central</b>	2	15	41	68	121	230	506	627	3,239	3,881	3	5	11	37	43
Iowa	—	4	13	18	25	20	51	70	413	355	—	0	0	—	—
Kansas	—	2	6	6	15	36	68	90	565	417	—	1	5	1	5
Minnesota	—	0	0	—	—	—	97	123	—	746	—	0	1	—	—
Missouri	—	5	16	16	38	137	222	286	1,780	1,690	1	2	9	21	27
Nebraska	2	2	9	18	19	35	43	78	325	314	1	1	4	12	3
North Dakota	—	0	4	—	9	2	17	32	55	139	1	0	4	3	5
South Dakota	—	2	6	10	15	—	20	33	101	220	—	0	2	—	3
<b>S. Atlantic</b>	21	51	77	223	366	629	1,755	2,420	7,070	13,479	8	18	89	166	212
Delaware	—	0	3	—	—	41	32	59	291	251	—	0	3	6	4
District of Columbia	—	0	2	—	3	—	65	146	307	432	—	0	1	1	6
Florida	18	21	53	154	146	309	529	906	3,950	3,799	5	4	65	41	51
Georgia	—	14	28	—	124	—	276	371	—	2,012	2	3	8	18	41
Maryland	1	4	11	25	33	61	167	338	737	1,031	1	2	10	24	25
North Carolina	—	0	0	—	—	—	361	421	10	2,911	—	3	9	23	36
South Carolina	—	2	7	17	18	188	178	300	1,574	1,496	—	2	10	32	16
Virginia	2	5	17	16	30	—	120	776	—	1,443	—	2	13	15	23
West Virginia	—	1	5	11	12	30	19	31	201	104	—	1	3	6	10
<b>E.S. Central</b>	1	4	13	25	47	206	574	785	3,228	3,905	—	7	12	56	68
Alabama	1	4	13	25	47	—	157	268	735	1,173	—	1	4	8	15
Kentucky	N	0	0	N	N	32	114	227	775	236	—	1	3	7	9
Mississippi	N	0	0	N	N	113	115	208	660	925	—	1	6	12	7
Tennessee	N	0	0	N	N	61	185	269	1,058	1,571	—	3	7	29	37
<b>W.S. Central</b>	3	4	20	24	39	938	1,252	2,918	11,531	9,497	4	10	30	61	64
Arkansas	3	3	9	15	15	40	96	190	309	696	—	1	4	7	7
Louisiana	—	1	11	9	24	20	221	2,020	3,471	1,311	—	1	3	11	17
Oklahoma	N	0	0	N	N	12	107	157	732	895	1	1	8	23	11
Texas	N	0	0	N	N	866	831	1,211	7,019	6,595	3	6	28	20	29
<b>Mountain</b>	17	25	52	146	166	256	510	732	3,501	3,774	4	7	14	72	91
Arizona	2	2	7	23	27	90	199	310	1,222	1,349	3	2	5	29	39
Colorado	10	11	21	69	64	114	123	253	1,107	839	—	1	6	15	14
Idaho	2	3	13	18	23	—	9	39	7	119	1	0	3	4	7
Montana	2	2	8	8	12	—	14	26	1	178	—	0	2	4	3
Nevada	—	1	4	3	12	32	65	99	456	459	—	1	3	6	9
New Mexico	—	1	9	9	8	7	63	129	369	487	—	1	3	9	14
Utah	1	3	9	16	17	13	40	59	314	316	—	1	3	5	5
Wyoming	—	1	2	—	3	—	5	16	25	27	—	0	2	—	—
<b>Pacific</b>	9	73	135	295	488	727	1,510	1,943	11,109	11,502	—	4	9	35	43
Alaska	—	1	5	5	11	—	26	54	—	175	—	0	2	1	4
California	6	54	83	262	381	527	1,237	1,589	9,262	9,408	—	1	2	8	6
Hawaii	—	1	4	5	7	5	27	50	153	170	—	0	3	7	12
Oregon	3	6	17	15	49	73	85	129	698	565	—	2	7	19	21
Washington	—	10	48	8	40	122	153	290	996	1,184	—	0	2	—	—
<b>Territories</b>															
American Samoa	—	0	0	—	—	—	0	0	—	—	—	0	0	—	—
C.N.M.I.	—	—	—	—	—	—	—	—	—	—	—	—	—	—	—
Guam	—	0	0	—	—	—	0	0	—	—	—	0	0	—	—
Puerto Rico	—	0	3	—	4	—	12	28	42	109	—	0	2	—	—
U.S. Virgin Islands	—	0	0	—	—	—	0	3	—	6	—	0	0	—	—

C.N.M.I.: Commonwealth of Northern Mariana Islands.

U: Unavailable. —: No reported cases. N: Not reportable. NN: Not Nationally Notifiable. NP: Nationally notifiable but not published. Cum: Cumulative year-to-date counts. Med: Median. Max: Maximum.

\* Three low incidence conditions, rubella, rubella congenital, and tetanus, are in Table II to facilitate case count verification with reporting jurisdictions.

<sup>†</sup> Case counts for reporting years 2016 and 2017 are provisional and subject to change. For further information on interpretation of these data, see

<http://www.cdc.gov/nndss/document/ProvisionalNationalNotifiableDiseasesSurveillanceData20100927.pdf>. Data for tuberculosis are displayed in Table IV, which appears quarterly.

<sup>§</sup> Data for Haemophilus influenzae (age <5 for serotype b, non typeable, non-b serotype, and unknown serotype) are available in Table I.



Morbidity and Mortality Weekly Report

TABLE II. (Continued) Provisional cases of selected notifiable diseases (≥1,000 cases reported during the preceding year), and selected\* low frequency diseases, United States and U.S. territories, weeks ending February 25, 2017, and February 27, 2016 (8th week)<sup>†</sup> (Export data)

Reporting area	Hepatitis (viral, acute, by type)									
	A					B				
	Current week	Previous 52 weeks		Cum 2017	Cum 2016	Current week	Previous 52 weeks		Cum 2017	Cum 2016
	Med	Max				Med	Max			
<b>United States</b>	11	31	104	159	235	16	58	80	296	468
<b>New England</b>	—	2	5	5	13	—	1	4	10	17
Connecticut	—	0	3	1	2	—	0	1	—	1
Maine	—	0	1	—	2	—	1	3	6	6
Massachusetts	—	1	4	4	8	—	0	2	4	9
New Hampshire	—	0	1	—	—	—	0	0	—	—
Rhode Island	—	0	2	—	—	U	0	0	U	U
Vermont	—	0	1	—	1	—	0	1	—	1
<b>Mid. Atlantic</b>	4	4	10	25	33	2	4	7	18	23
New Jersey	—	1	4	—	13	—	0	3	2	9
New York (Upstate)	1	1	3	7	8	1	1	4	2	4
New York City	1	1	4	14	6	1	1	3	5	7
Pennsylvania	2	1	3	4	6	—	1	3	9	3
<b>E.N. Central</b>	1	4	11	35	27	2	11	20	54	90
Illinois	—	1	5	5	12	—	0	3	1	9
Indiana	—	0	1	2	7	—	4	10	17	21
Michigan	—	2	8	24	8	—	1	4	10	4
Ohio	1	0	7	3	—	2	5	13	23	53
Wisconsin	—	0	2	1	—	—	0	1	3	3
<b>W.N. Central</b>	—	1	5	4	11	1	1	7	8	20
Iowa	—	0	2	1	2	—	0	2	2	2
Kansas	—	0	1	1	—	—	0	3	2	6
Minnesota	—	0	2	—	1	—	0	2	—	2
Missouri	—	0	2	1	5	1	1	3	3	7
Nebraska	—	0	4	1	3	—	0	2	1	1
North Dakota	—	0	1	—	—	—	0	1	—	1
South Dakota	—	0	1	—	—	—	0	1	—	1
<b>S. Atlantic</b>	5	7	55	46	56	6	20	34	110	170
Delaware	—	0	1	—	—	—	0	1	1	—
District of Columbia	U	0	0	U	U	U	0	0	U	U
Florida	4	2	7	24	16	6	11	17	68	77
Georgia	—	1	4	3	14	—	2	7	12	15
Maryland	—	0	5	1	2	—	0	3	4	7
North Carolina	—	1	5	1	11	—	3	8	3	24
South Carolina	—	0	3	7	2	—	0	4	3	8
Virginia	1	2	40	7	10	—	1	5	6	12
West Virginia	—	0	4	3	1	—	4	12	13	27
<b>E.S. Central</b>	—	0	4	2	7	2	8	18	48	85
Alabama	—	0	2	1	6	—	1	3	8	17
Kentucky	—	0	2	1	—	1	3	11	15	29
Mississippi	—	0	1	—	1	—	1	2	6	4
Tennessee	—	0	2	—	—	1	4	7	19	35
<b>W.S. Central</b>	—	3	8	6	29	—	4	16	27	24
Arkansas	—	0	3	1	—	—	1	5	7	7
Louisiana	—	0	1	1	4	—	1	5	12	5
Oklahoma	—	0	4	—	1	—	0	8	—	—
Texas	—	2	6	4	24	—	2	12	8	12
<b>Mountain</b>	—	2	5	10	19	1	1	4	6	10
Arizona	—	0	2	5	7	—	0	2	2	4
Colorado	—	0	2	2	4	1	0	2	3	1
Idaho	—	0	1	2	1	—	0	1	1	3
Montana	—	0	1	1	1	—	0	1	—	—
Nevada	—	0	2	—	4	—	0	2	—	2
New Mexico	—	0	1	—	—	—	0	1	—	—
Utah	—	0	2	—	2	—	0	1	—	—
Wyoming	—	0	0	—	—	U	0	0	U	U
<b>Pacific</b>	1	6	47	26	40	2	3	8	15	29
Alaska	—	0	1	1	—	—	0	2	1	—
California	1	4	9	18	38	—	2	6	7	23
Hawaii	—	0	39	2	—	—	0	0	—	—
Oregon	—	0	2	4	2	1	0	3	2	2
Washington	—	0	3	1	—	1	1	5	5	4
<b>Territories</b>										
American Samoa	—	0	0	—	—	—	0	0	—	—
C.N.M.I.	—	—	—	—	—	—	—	—	—	—
Guam	—	0	0	—	—	—	0	0	—	—
Puerto Rico	—	0	1	—	—	—	0	2	—	4
U.S. Virgin Islands	—	0	0	—	—	—	0	0	—	—

C.N.M.I.: Commonwealth of Northern Mariana Islands.

U: Unavailable. —: No reported cases. N: Not reportable. NN: Not Nationally Notifiable. NP: Nationally notifiable but not published. Cum: Cumulative year-to-date counts. Med: Median. Max: Maximum.

\* Three low incidence conditions, rubella, rubella congenital, and tetanus, are in Table II to facilitate case count verification with reporting jurisdictions.

<sup>†</sup> Case counts for reporting years 2016 and 2017 are provisional and subject to change. For further information on interpretation of these data, see <http://www.cdc.gov/nndss/document/ProvisionalNationallyNotifiableDiseasesSurveillanceData20100927.pdf>. Data for tuberculosis are displayed in Table IV, which appears quarterly.

Morbidity and Mortality Weekly Report

TABLE II. (Continued) Provisional cases of selected notifiable diseases (≥1,000 cases reported during the preceding year), and selected\* low frequency diseases, United States and U.S. territories, weeks ending February 25, 2017, and February 27, 2016 (8th week)<sup>†</sup> (Export data)

Reporting area	Hepatitis (viral, acute, by type) <sup>§</sup> (Continued)									
	C (confirmed)					C (probable)				
	Current week	Previous 52 weeks		Cum 2017	Cum 2016	Current week	Previous 52 weeks		Cum 2017	Cum 2016
	Med	Max				Med	Max			
<b>United States</b>	17	47	73	167	490	7	19	28	81	144
<b>New England</b>	1	6	13	11	104	1	2	8	2	21
Connecticut	—	0	2	—	6	—	0	0	—	—
Maine	—	0	3	4	3	1	0	2	1	1
Massachusetts	—	5	11	6	93	—	2	8	1	20
New Hampshire	—	0	0	—	—	—	0	0	—	—
Rhode Island	—	0	0	—	—	—	0	0	—	—
Vermont	1	0	1	1	2	—	0	0	—	—
<b>Mid. Atlantic</b>	5	7	18	20	78	—	0	3	—	—
New Jersey	—	0	3	—	14	—	0	0	—	—
New York (Upstate)	3	3	11	10	28	—	0	0	—	—
New York City	—	0	1	—	2	—	0	0	—	—
Pennsylvania	2	3	11	10	34	—	0	3	—	—
<b>E.N. Central</b>	3	8	17	29	94	1	3	7	21	28
Illinois	—	0	3	1	6	—	0	1	—	—
Indiana	—	2	7	9	25	—	0	3	4	9
Michigan	—	1	4	6	19	—	0	5	7	7
Ohio	3	3	10	12	34	1	2	4	10	12
Wisconsin	—	1	3	1	10	—	0	0	—	—
<b>W.N. Central</b>	1	2	7	10	20	—	0	1	1	1
Iowa	—	0	0	—	—	—	0	0	—	—
Kansas	—	0	2	1	3	—	0	0	—	—
Minnesota	—	1	4	—	7	—	0	0	—	1
Missouri	1	0	3	7	3	—	0	0	—	—
Nebraska	—	0	2	—	2	—	0	1	1	—
North Dakota	—	0	1	1	—	—	0	0	—	—
South Dakota	—	0	1	1	5	—	0	1	—	—
<b>S. Atlantic</b>	3	10	20	53	96	3	5	9	26	31
Delaware	—	0	0	—	—	—	0	0	—	—
District of Columbia	—	0	0	—	—	—	0	0	—	—
Florida	3	4	9	37	40	2	1	4	11	9
Georgia	—	1	4	2	13	—	0	0	—	—
Maryland	—	0	3	1	3	1	0	2	2	—
North Carolina	—	1	4	2	16	—	2	6	4	12
South Carolina	—	0	2	1	3	—	0	1	—	—
Virginia	—	1	4	4	7	—	0	4	1	3
West Virginia	—	1	6	6	14	—	1	3	8	7
<b>E.S. Central</b>	2	4	17	15	53	2	5	14	19	41
Alabama	—	0	4	1	6	—	1	4	3	8
Kentucky	1	1	8	4	15	2	3	9	10	24
Mississippi	—	0	0	—	—	—	0	0	—	—
Tennessee	1	2	11	10	32	—	2	6	6	9
<b>W.S. Central</b>	—	1	5	6	4	—	0	3	—	7
Arkansas	—	0	0	—	—	—	0	0	—	—
Louisiana	—	0	1	1	1	—	0	2	—	7
Oklahoma	—	0	4	1	1	—	0	3	—	—
Texas	—	0	4	4	2	—	0	0	—	—
<b>Mountain</b>	2	2	9	14	27	—	1	4	6	10
Arizona	—	0	0	—	—	—	0	0	—	—
Colorado	2	0	3	5	3	—	0	2	1	1
Idaho	—	0	1	1	1	—	0	1	—	—
Montana	—	0	2	2	5	—	0	1	—	—
Nevada	—	0	3	2	1	—	0	2	—	2
New Mexico	—	0	2	—	11	—	0	2	—	2
Utah	—	1	4	4	6	—	0	2	5	5
Wyoming	—	0	0	—	—	—	0	0	—	—
<b>Pacific</b>	—	2	9	9	14	—	1	4	6	5
Alaska	—	0	0	—	—	—	0	0	—	—
California	—	1	4	7	7	—	0	3	2	3
Hawaii	—	0	0	—	—	—	0	0	—	—
Oregon	—	0	2	1	4	—	0	2	4	1
Washington	—	1	6	1	3	—	0	3	—	1
<b>Territories</b>										
American Samoa	—	0	0	—	—	—	0	0	—	—
C.N.M.I.	—	—	—	—	—	—	—	—	—	—
Guam	—	0	0	—	—	—	0	0	—	—
Puerto Rico	—	0	0	—	—	—	0	0	—	—
U.S. Virgin Islands	—	0	0	—	—	—	0	0	—	—

C.N.M.I.: Commonwealth of Northern Mariana Islands.

U: Unavailable. —: No reported cases. N: Not reportable. NN: Not Nationally Notifiable. NP: Nationally notifiable but not published. Cum: Cumulative year-to-date counts. Med: Median. Max: Maximum.

\* Three low incidence conditions, rubella, rubella congenital, and tetanus, are in Table II to facilitate case count verification with reporting jurisdictions.

<sup>†</sup> Case counts for reporting years 2016 and 2017 are provisional and subject to change. For further information on interpretation of these data, see <http://www.cdc.gov/nndss/document/ProvisionalNationalNotifiableDiseasesSurveillanceData20100927.pdf>. Data for tuberculosis are displayed in Table IV, which appears quarterly.

<sup>§</sup> Based on the CSTE Position Statement 15-ID-03: Revision of the Case Definition of Hepatitis C for National Notification, acute hepatitis C is now reported by case classification status.

Morbidity and Mortality Weekly Report

TABLE II. (Continued) Provisional cases of selected notifiable diseases (≥1,000 cases reported during the preceding year), and selected\* low frequency diseases, United States and U.S. territories, weeks ending February 25, 2017, and February 27, 2016 (8th week)<sup>†</sup> (Export data)

Reporting area	Invasive Pneumococcal Disease <sup>§</sup> (all ages)									
	Confirmed					Probable				
	Current week	Previous 52 weeks		Cum 2017	Cum 2016	Current week	Previous 52 weeks		Cum 2017	Cum 2016
	Med	Max				Med	Max			
<b>United States</b>	266	298	568	3,000	3,300	1	0	6	17	8
<b>New England</b>	2	21	45	190	214	—	0	0	—	—
Connecticut	—	4	9	21	43	—	0	0	—	—
Maine	1	2	9	19	23	—	0	0	—	—
Massachusetts	—	11	27	109	100	—	0	0	—	—
New Hampshire	1	2	6	26	21	—	0	0	—	—
Rhode Island	—	1	10	8	4	—	0	0	—	—
Vermont	—	1	5	7	23	—	0	0	—	—
<b>Mid. Atlantic</b>	47	41	80	432	396	—	0	4	6	3
New Jersey	3	0	8	26	2	—	0	2	2	—
New York (Upstate)	24	18	51	157	151	—	0	0	—	—
New York City	14	13	29	163	130	—	0	0	—	—
Pennsylvania	6	9	23	86	113	—	0	2	4	3
<b>E.N. Central</b>	43	48	103	494	629	—	0	1	2	2
Illinois	N	0	0	N	N	N	0	0	N	N
Indiana	—	9	27	57	135	—	0	0	—	—
Michigan	2	12	28	94	179	—	0	1	2	2
Ohio	33	17	53	229	228	—	0	0	—	—
Wisconsin	8	7	22	114	87	—	0	0	—	—
<b>W.N. Central</b>	18	16	43	216	141	—	0	3	5	1
Iowa	N	0	0	N	N	N	0	0	N	N
Kansas	—	4	10	43	44	—	0	0	—	—
Minnesota	—	0	0	—	—	—	0	0	—	—
Missouri	11	5	18	99	33	—	0	3	5	—
Nebraska	6	3	8	39	39	—	0	1	—	1
North Dakota	1	1	5	15	6	—	0	0	—	—
South Dakota	—	2	9	20	19	—	0	0	—	—
<b>S. Atlantic</b>	48	51	123	560	609	—	0	1	1	1
Delaware	—	1	6	16	13	—	0	0	—	—
District of Columbia	—	1	4	2	11	—	0	0	—	—
Florida	21	10	59	132	157	—	0	1	1	—
Georgia	6	17	38	118	207	—	0	0	—	—
Maryland	15	9	22	102	95	—	0	0	—	1
North Carolina	N	0	0	N	N	N	0	0	N	N
South Carolina	3	8	39	153	75	—	0	0	—	—
Virginia	—	0	2	1	4	—	0	0	—	—
West Virginia	3	4	17	36	47	—	0	1	—	—
<b>E.S. Central</b>	36	34	69	345	338	—	0	1	—	—
Alabama	3	7	25	65	63	—	0	0	—	—
Kentucky	12	4	13	48	47	—	0	1	—	—
Mississippi	—	4	11	31	67	—	0	0	—	—
Tennessee	21	17	38	201	161	—	0	1	—	—
<b>W.S. Central</b>	27	37	162	307	415	—	0	1	1	—
Arkansas	1	4	24	45	46	—	0	1	—	—
Louisiana	3	5	16	54	76	—	0	1	—	—
Oklahoma	N	0	0	N	N	N	0	0	N	N
Texas	23	27	128	208	293	—	0	1	1	—
<b>Mountain</b>	43	35	78	424	523	1	0	1	2	1
Arizona	20	11	33	175	218	—	0	0	—	—
Colorado	15	9	19	99	101	—	0	0	—	—
Idaho	N	0	0	N	N	N	0	0	N	N
Montana	3	1	7	11	16	1	0	1	2	1
Nevada	—	3	12	38	63	—	0	0	—	—
New Mexico	3	5	15	64	64	—	0	0	—	—
Utah	2	4	10	34	52	—	0	0	—	—
Wyoming	—	0	3	3	9	—	0	0	—	—
<b>Pacific</b>	2	4	10	32	35	—	0	0	—	—
Alaska	1	2	8	13	19	—	0	0	—	—
California	N	0	0	N	N	N	0	0	N	N
Hawaii	1	1	6	19	16	—	0	0	—	—
Oregon	N	0	0	N	N	N	0	0	N	N
Washington	N	0	0	N	N	N	0	0	N	N
<b>Territories</b>										
American Samoa	N	0	0	N	N	N	0	0	N	N
C.N.M.I.	—	—	—	—	—	—	—	—	—	—
Guam	—	0	0	—	—	—	0	0	—	—
Puerto Rico	—	0	0	—	—	—	0	0	—	—
U.S. Virgin Islands	—	0	0	—	—	—	0	0	—	—

C.N.M.I.: Commonwealth of Northern Mariana Islands.

U: Unavailable. —: No reported cases. N: Not reportable. NN: Not Nationally Notifiable. NP: Nationally notifiable but not published. Cum: Cumulative year-to-date counts. Med: Median. Max: Maximum.

\* Three low incidence conditions, rubella, rubella congenital, and tetanus, are in Table II to facilitate case count verification with reporting jurisdictions.

<sup>†</sup> Case counts for reporting years 2016 and 2017 are provisional and subject to change. For further information on interpretation of these data, see <http://www.cdc.gov/nndss/document/ProvisionalNationalNotifiableDiseasesSurveillanceData20100927.pdf>. Data for tuberculosis are displayed in Table IV, which appears quarterly.

<sup>§</sup> Includes drug resistant and susceptible cases of Invasive Pneumococcal Disease. This condition was previously named *Streptococcus pneumoniae* invasive disease and cases were reported to CDC using different event codes to specify whether the cases were drug resistant or in a defined age group, such as <5 years.

Morbidity and Mortality Weekly Report

TABLE II. (Continued) Provisional cases of selected notifiable diseases (≥1,000 cases reported during the preceding year), and selected\* low frequency diseases, United States and U.S. territories, weeks ending February 25, 2017, and February 27, 2016 (8th week)<sup>†</sup> (Export data)

Reporting area	Invasive Pneumococcal Disease <sup>§</sup> (age <5)									
	Confirmed					Probable				
	Current week	Previous 52 weeks		Cum 2017	Cum 2016	Current week	Previous 52 weeks		Cum 2017	Cum 2016
	Med	Max				Med	Max			
<b>United States</b>	14	19	34	139	195	—	0	2	—	—
<b>New England</b>	—	1	4	5	11	—	0	0	—	—
Connecticut	—	0	2	—	2	—	0	0	—	—
Maine	—	0	2	—	1	—	0	0	—	—
Massachusetts	—	0	2	3	6	—	0	0	—	—
New Hampshire	—	0	1	2	—	—	0	0	—	—
Rhode Island	—	0	1	—	—	—	0	0	—	—
Vermont	—	0	1	—	2	—	0	0	—	—
<b>Mid. Atlantic</b>	2	1	8	13	18	—	0	0	—	—
New Jersey	—	0	0	—	—	—	0	0	—	—
New York (Upstate)	1	1	7	6	9	—	0	0	—	—
New York City	—	0	2	5	5	—	0	0	—	—
Pennsylvania	1	0	3	2	4	—	0	0	—	—
<b>E.N. Central</b>	3	2	6	22	33	—	0	1	—	—
Illinois	—	0	0	—	—	—	0	0	—	—
Indiana	—	0	3	1	2	—	0	0	—	—
Michigan	1	0	4	2	7	—	0	1	—	—
Ohio	2	1	5	14	20	—	0	0	—	—
Wisconsin	—	0	2	5	4	—	0	0	—	—
<b>W.N. Central</b>	—	1	4	10	8	—	0	1	—	—
Iowa	N	0	0	N	N	N	0	0	N	N
Kansas	—	0	2	5	2	—	0	0	—	—
Minnesota	—	0	0	—	—	—	0	0	—	—
Missouri	—	0	2	1	3	—	0	1	—	—
Nebraska	—	0	2	1	3	—	0	0	—	—
North Dakota	—	0	2	3	—	—	0	0	—	—
South Dakota	N	0	0	N	N	N	0	0	N	N
<b>S. Atlantic</b>	4	4	9	29	41	—	0	0	—	—
Delaware	—	0	0	—	—	—	0	0	—	—
District of Columbia	—	0	0	—	—	—	0	0	—	—
Florida	3	1	5	15	16	—	0	0	—	—
Georgia	—	1	5	5	9	—	0	0	—	—
Maryland	1	0	3	4	8	—	0	0	—	—
North Carolina	N	0	0	N	N	N	0	0	N	N
South Carolina	—	0	3	3	2	—	0	0	—	—
Virginia	—	0	2	1	4	—	0	0	—	—
West Virginia	—	0	1	1	2	—	0	0	—	—
<b>E.S. Central</b>	1	2	8	15	17	—	0	1	—	—
Alabama	—	0	5	4	3	—	0	0	—	—
Kentucky	1	0	2	2	—	—	0	1	—	—
Mississippi	—	0	2	1	7	—	0	0	—	—
Tennessee	—	1	7	8	7	—	0	0	—	—
<b>W.S. Central</b>	2	4	13	21	34	—	0	0	—	—
Arkansas	—	0	2	1	7	—	0	0	—	—
Louisiana	—	0	3	4	5	—	0	0	—	—
Oklahoma	—	0	3	1	2	—	0	0	—	—
Texas	2	3	9	15	20	—	0	0	—	—
<b>Mountain</b>	2	2	6	23	30	—	0	1	—	—
Arizona	1	1	3	5	17	—	0	0	—	—
Colorado	1	0	3	5	1	—	0	0	—	—
Idaho	—	0	1	3	2	—	0	1	—	—
Montana	—	0	1	1	1	—	0	0	—	—
Nevada	—	0	1	2	3	—	0	0	—	—
New Mexico	—	0	2	2	3	—	0	0	—	—
Utah	—	0	3	5	3	—	0	0	—	—
Wyoming	—	0	1	—	—	—	0	0	—	—
<b>Pacific</b>	—	0	1	1	3	—	0	0	—	—
Alaska	—	0	1	—	3	—	0	0	—	—
California	N	0	0	N	N	N	0	0	N	N
Hawaii	—	0	1	1	—	—	0	0	—	—
Oregon	N	0	0	N	N	N	0	0	N	N
Washington	N	0	0	N	N	N	0	0	N	N
<b>Territories</b>										
American Samoa	—	0	0	—	—	—	0	0	—	—
C.N.M.I.	—	—	—	—	—	—	—	—	—	—
Guam	—	0	0	—	—	—	0	0	—	—
Puerto Rico	—	0	0	—	—	—	0	0	—	—
U.S. Virgin Islands	—	0	0	—	—	—	0	0	—	—

C.N.M.I.: Commonwealth of Northern Mariana Islands.

U: Unavailable. —: No reported cases. N: Not reportable. NN: Not Nationally Notifiable. NP: Nationally notifiable but not published. Cum: Cumulative year-to-date counts. Med: Median. Max: Maximum.

\* Three low incidence conditions, rubella, rubella congenital, and tetanus, are in Table II to facilitate case count verification with reporting jurisdictions.

<sup>†</sup> Case counts for reporting years 2016 and 2017 are provisional and subject to change. For further information on interpretation of these data, see <http://www.cdc.gov/nndss/document/ProvisionalNationalNotifiableDiseasesSurveillanceData20100927.pdf>. Data for tuberculosis are displayed in Table IV, which appears quarterly.

<sup>§</sup> Includes drug resistant and susceptible cases of Invasive Pneumococcal Disease. This condition was previously named *Streptococcus pneumoniae* invasive disease and cases were reported to CDC using different event codes to specify whether the cases were drug resistant or in a defined age group, such as <5 years.

Morbidity and Mortality Weekly Report

TABLE II. (Continued) Provisional cases of selected notifiable diseases ( $\geq 1,000$  cases reported during the preceding year), and selected\* low frequency diseases, United States and U.S. territories, weeks ending February 25, 2017, and February 27, 2016 (8th week)<sup>†</sup> (Export data)

Reporting area	Legionellosis					Malaria				
	Current week	Previous 52 weeks		Cum 2017	Cum 2016	Current week	Previous 52 weeks		Cum 2017	Cum 2016
		Med	Max				Med	Max		
<b>United States</b>	24	110	208	460	514	8	34	85	162	170
<b>New England</b>	—	4	21	19	15	—	2	7	10	16
Connecticut	—	1	6	6	2	—	0	0	—	1
Maine	—	0	2	—	4	—	0	1	—	2
Massachusetts	—	2	11	9	8	—	2	6	9	10
New Hampshire	—	0	3	2	—	—	0	2	—	3
Rhode Island	—	0	7	2	—	—	0	3	—	—
Vermont	—	0	2	—	1	—	0	2	1	—
<b>Mid. Atlantic</b>	10	20	64	113	115	5	8	24	48	36
New Jersey	—	2	7	6	12	—	1	7	7	7
New York (Upstate)	7	8	26	37	33	—	1	8	7	5
New York City	2	4	31	38	47	5	4	17	26	16
Pennsylvania	1	7	19	32	23	—	1	6	8	8
<b>E.N. Central</b>	2	21	69	80	107	—	3	25	10	19
Illinois	—	4	17	7	28	—	1	5	—	7
Indiana	—	2	12	7	8	—	0	2	—	—
Michigan	—	4	26	13	18	—	0	4	3	4
Ohio	2	8	32	53	46	—	1	13	6	6
Wisconsin	—	0	3	—	7	—	0	3	1	2
<b>W.N. Central</b>	1	5	25	19	23	—	1	5	6	5
Iowa	—	1	2	5	3	—	0	3	2	1
Kansas	—	0	4	—	1	—	0	2	1	—
Minnesota	—	1	11	—	4	—	0	0	—	—
Missouri	1	2	13	10	15	—	0	3	2	1
Nebraska	—	0	3	3	—	—	0	1	—	1
North Dakota	—	0	2	1	—	—	0	1	1	—
South Dakota	—	0	1	—	—	—	0	1	—	2
<b>S. Atlantic</b>	5	19	36	98	112	3	9	26	61	54
Delaware	—	0	2	1	5	—	0	3	1	4
District of Columbia	—	0	0	—	—	—	0	3	2	3
Florida	4	6	13	54	38	1	1	4	7	6
Georgia	—	2	6	14	18	—	1	5	4	10
Maryland	1	3	7	16	15	2	3	12	34	14
North Carolina	—	4	11	7	19	—	1	4	1	7
South Carolina	—	1	4	3	4	—	0	3	1	1
Virginia	—	2	9	3	12	—	1	4	11	8
West Virginia	—	0	3	—	1	—	0	0	—	1
<b>E.S. Central</b>	—	5	13	37	25	—	1	3	3	6
Alabama	—	1	4	7	5	—	0	1	—	2
Kentucky	—	2	6	15	6	—	0	2	1	—
Mississippi	—	0	3	1	2	—	0	1	—	2
Tennessee	—	2	7	14	12	—	0	2	2	2
<b>W.S. Central</b>	2	6	27	29	20	—	2	17	8	14
Arkansas	—	0	6	5	2	—	0	1	—	—
Louisiana	—	0	2	4	4	—	0	1	—	2
Oklahoma	—	0	20	1	1	—	0	1	—	—
Texas	2	4	16	19	13	—	2	17	8	12
<b>Mountain</b>	4	3	10	30	25	—	2	5	9	4
Arizona	3	1	6	18	11	—	1	4	4	1
Colorado	—	0	4	5	—	—	0	2	1	2
Idaho	—	0	1	—	4	—	0	1	2	—
Montana	—	0	1	4	1	—	0	1	1	—
Nevada	1	0	4	1	3	—	0	1	—	1
New Mexico	—	0	3	1	2	—	0	1	—	—
Utah	—	0	3	—	4	—	0	3	1	—
Wyoming	—	0	1	1	—	—	0	1	—	—
<b>Pacific</b>	—	10	34	35	72	—	3	9	7	16
Alaska	—	0	1	—	—	—	0	1	—	1
California	—	9	29	29	66	—	2	7	5	10
Hawaii	—	0	1	1	—	—	0	0	—	—
Oregon	—	1	3	3	4	—	0	3	2	2
Washington	—	1	9	2	2	—	1	4	—	3
<b>Territories</b>										
American Samoa	N	0	0	N	N	—	0	0	—	—
C.N.M.I.	—	—	—	—	—	—	—	—	—	—
Guam	—	0	0	—	—	—	0	0	—	—
Puerto Rico	—	0	1	—	1	—	0	1	—	—
U.S. Virgin Islands	—	0	0	—	—	—	0	0	—	—

C.N.M.I.: Commonwealth of Northern Mariana Islands.

U: Unavailable. —: No reported cases. N: Not reportable. NN: Not Nationally Notifiable. NP: Nationally notifiable but not published. Cum: Cumulative year-to-date counts. Med: Median. Max: Maximum.

\* Three low incidence conditions, rubella, rubella congenital, and tetanus, are in Table II to facilitate case count verification with reporting jurisdictions.

<sup>†</sup> Case counts for reporting years 2016 and 2017 are provisional and subject to change. For further information on interpretation of these data, see <http://www.cdc.gov/nndss/document/ProvisionalNationalNotifiableDiseasesSurveillanceData20100927.pdf>. Data for tuberculosis are displayed in Table IV, which appears quarterly.

Morbidity and Mortality Weekly Report

TABLE II. (Continued) Provisional cases of selected notifiable diseases (≥1,000 cases reported during the preceding year), and selected\* low frequency diseases, United States and U.S. territories, weeks ending February 25, 2017, and February 27, 2016 (8th week)<sup>†</sup> (Export data)

Reporting area	Meningococcal disease ( <i>Neisseria meningitidis</i> ) <sup>§</sup> (all serogroups)					Mumps					Pertussis				
	Current week	Previous 52 weeks		Cum 2017	Cum 2016	Current week	Previous 52 weeks		Cum 2017	Cum 2016	Current week	Previous 52 weeks		Cum 2017	Cum 2016
		Med	Max				Med	Max				Med	Max		
<b>United States</b>	5	6	20	54	59	77	101	401	1,077	455	102	313	496	1,395	2,578
<b>New England</b>	—	0	2	—	5	—	3	38	10	23	—	16	69	110	108
Connecticut	—	0	0	—	1	—	0	12	1	2	—	1	6	5	9
Maine	—	0	1	—	—	—	0	4	1	1	—	4	14	49	47
Massachusetts	—	0	1	—	4	—	2	28	7	14	—	4	9	8	22
New Hampshire	—	0	0	—	—	—	0	5	1	6	—	1	4	2	6
Rhode Island	—	0	0	—	—	—	0	1	—	—	—	0	16	4	1
Vermont	—	0	0	—	—	—	0	0	—	—	—	3	45	42	23
<b>Mid. Atlantic</b>	2	0	4	4	2	4	7	32	66	8	19	53	91	195	526
New Jersey	—	0	2	—	—	—	0	3	2	1	—	7	17	7	127
New York (Upstate)	1	0	1	2	—	2	2	23	25	1	8	12	33	50	104
New York City	—	0	1	—	2	—	3	19	30	6	—	5	14	7	55
Pennsylvania	1	0	2	2	—	2	0	2	9	—	11	22	78	131	240
<b>E.N. Central</b>	—	0	6	6	10	6	8	55	80	133	4	69	156	326	575
Illinois	—	0	2	—	3	—	3	25	27	91	—	18	41	56	140
Indiana	—	0	2	—	1	—	2	23	10	29	—	3	9	11	29
Michigan	—	0	2	2	2	—	0	2	1	3	—	7	29	54	55
Ohio	—	0	3	4	2	6	1	20	18	6	4	18	38	125	184
Wisconsin	—	0	1	—	2	—	0	15	24	4	—	23	99	80	167
<b>W.N. Central</b>	—	0	1	—	3	23	15	45	206	232	10	28	58	79	213
Iowa	—	0	1	—	1	2	8	40	33	210	—	2	11	3	16
Kansas	—	0	1	—	—	4	0	9	29	6	—	2	8	2	11
Minnesota	—	0	1	—	—	—	0	3	—	14	—	16	38	—	87
Missouri	—	0	1	—	1	16	0	29	142	—	9	3	27	45	41
Nebraska	—	0	1	—	—	1	0	10	1	1	1	2	6	16	52
North Dakota	—	0	0	—	—	—	0	3	1	1	—	0	5	13	1
South Dakota	—	0	0	—	1	—	0	2	—	—	—	0	2	—	5
<b>S. Atlantic</b>	—	1	5	13	8	—	2	6	16	18	15	25	38	125	254
Delaware	—	0	0	—	—	—	0	0	—	—	—	0	2	—	4
District of Columbia	—	0	0	—	—	—	0	2	1	—	—	0	2	5	2
Florida	—	0	3	7	2	—	0	2	2	—	9	6	16	38	68
Georgia	—	0	3	1	2	—	0	3	5	—	—	2	7	6	50
Maryland	—	0	1	1	—	—	0	3	—	—	2	2	9	14	13
North Carolina	—	0	1	—	2	—	0	3	2	15	—	4	11	17	58
South Carolina	—	0	2	2	2	—	0	2	—	2	4	3	15	38	20
Virginia	—	0	2	2	—	—	0	4	6	1	—	3	12	4	31
West Virginia	—	0	2	—	—	—	0	1	—	—	—	0	3	3	8
<b>E.S. Central</b>	1	0	2	3	2	—	1	15	4	18	3	13	33	69	179
Alabama	—	0	1	—	1	—	0	1	—	1	1	3	7	6	36
Kentucky	—	0	1	—	—	—	0	15	1	17	2	6	27	31	126
Mississippi	1	0	0	1	—	—	0	1	1	—	—	0	2	5	1
Tennessee	—	0	1	2	1	—	0	1	2	—	—	3	10	27	16
<b>W.S. Central</b>	—	0	3	2	4	32	3	331	562	7	13	27	133	124	118
Arkansas	—	0	1	—	1	17	1	247	416	—	2	1	6	22	8
Louisiana	—	0	1	1	1	—	0	0	—	—	—	1	5	5	8
Oklahoma	—	0	1	—	1	8	0	81	60	—	—	0	54	—	—
Texas	—	0	3	1	1	7	1	55	86	7	11	21	124	97	102
<b>Mountain</b>	—	0	3	5	3	4	1	10	45	9	24	30	48	232	349
Arizona	—	0	1	2	1	1	0	2	1	3	4	4	13	60	110
Colorado	—	0	2	2	—	2	0	10	38	6	20	15	28	129	150
Idaho	—	0	1	1	—	1	0	1	3	—	—	1	8	8	10
Montana	—	0	1	—	—	—	0	6	1	—	—	0	3	—	2
Nevada	—	0	2	—	1	—	0	1	2	—	—	0	3	1	7
New Mexico	—	0	1	—	—	—	0	1	—	—	—	3	9	28	22
Utah	—	0	1	—	1	—	0	1	—	—	—	4	9	6	42
Wyoming	—	0	0	—	—	—	0	0	—	—	—	0	3	—	6
<b>Pacific</b>	2	2	7	21	22	8	3	126	88	7	14	43	105	135	256
Alaska	—	0	1	—	2	—	0	2	1	—	—	3	10	8	15
California	—	1	6	13	15	1	1	9	15	7	—	24	42	89	168
Hawaii	—	0	1	—	—	—	0	3	1	—	—	1	5	3	9
Oregon	2	0	3	8	4	—	0	5	18	—	1	3	13	9	26
Washington	—	0	1	—	1	7	0	118	53	—	13	9	76	26	38
<b>Territories</b>															
American Samoa	—	0	0	—	—	—	0	0	—	—	—	0	0	—	—
C.N.M.I.	—	—	—	—	—	—	—	—	—	—	—	—	—	—	—
Guam	—	0	0	—	—	—	0	0	—	—	—	0	0	—	—
Puerto Rico	—	0	0	—	—	—	0	1	1	—	—	0	4	—	1
U.S. Virgin Islands	—	0	0	—	—	—	0	0	—	—	—	0	0	—	—

C.N.M.I.: Commonwealth of Northern Mariana Islands.

U: Unavailable. —: No reported cases. N: Not reportable. NN: Not Nationally Notifiable. NP: Nationally notifiable but not published. Cum: Cumulative year-to-date counts. Med: Median. Max: Maximum.

\* Three low incidence conditions, rubella, rubella congenital, and tetanus, are in Table II to facilitate case count verification with reporting jurisdictions.

<sup>†</sup> Case counts for reporting years 2016 and 2017 are provisional and subject to change. For further information on interpretation of these data, see <http://www.cdc.gov/nndss/document/ProvisionalNationalNotifiableDiseasesSurveillanceData20100927.pdf>. Data for tuberculosis are displayed in Table IV, which appears quarterly.

<sup>§</sup> Data for meningococcal disease, invasive caused by serogroups ACWY, serogroup B, other serogroups, and unknown serogroups are available in Table I.

Morbidity and Mortality Weekly Report

TABLE II. (Continued) Provisional cases of selected notifiable diseases (≥1,000 cases reported during the preceding year), and selected\* low frequency diseases, United States and U.S. territories, weeks ending February 25, 2017, and February 27, 2016 (8th week)<sup>†</sup> (Export data)

Reporting area	Rabies, animal					Rubella					Rubella, congenital syndrome				
	Current week	Previous 52 weeks		Cum 2017	Cum 2016	Current week	Previous 52 weeks		Cum 2017	Cum 2016	Current week	Previous 52 weeks		Cum 2017	Cum 2016
		Med	Max				Med	Max				Med	Max		
<b>United States</b>	13	52	114	137	318	—	0	2	—	2	—	0	1	1	—
<b>New England</b>	—	3	13	4	32	—	0	0	—	—	—	0	0	—	—
Connecticut	—	1	6	2	18	—	0	0	—	—	—	0	0	—	—
Maine	—	1	6	2	6	—	0	0	—	—	—	0	0	—	—
Massachusetts	—	0	0	—	—	—	0	0	—	—	—	0	0	—	—
New Hampshire	—	0	2	—	2	—	0	0	—	—	—	0	0	—	—
Rhode Island	—	0	4	—	2	—	0	0	—	—	—	0	0	—	—
Vermont	—	1	3	—	4	—	0	0	—	—	—	0	0	—	—
<b>Mid. Atlantic</b>	5	8	33	39	52	—	0	0	—	—	—	0	0	—	—
New Jersey	—	0	0	—	—	—	0	0	—	—	—	0	0	—	—
New York (Upstate)	5	8	33	39	52	—	0	0	—	—	—	0	0	—	—
New York City	—	0	0	—	—	—	0	0	—	—	—	0	0	—	—
Pennsylvania	—	0	0	—	—	—	0	0	—	—	—	0	0	—	—
<b>E.N. Central</b>	—	2	11	1	1	—	0	0	—	—	—	0	1	—	—
Illinois	—	0	7	—	—	—	0	0	—	—	—	0	1	—	—
Indiana	—	0	0	—	—	—	0	0	—	—	—	0	0	—	—
Michigan	—	0	3	—	—	—	0	0	—	—	—	0	0	—	—
Ohio	—	0	8	1	1	—	0	0	—	—	—	0	0	—	—
Wisconsin	N	0	0	N	N	—	0	0	—	—	—	0	0	—	—
<b>W.N. Central</b>	—	2	8	4	11	—	0	0	—	—	—	0	0	—	—
Iowa	—	0	0	—	—	—	0	0	—	—	—	0	0	—	—
Kansas	—	0	8	1	5	—	0	0	—	—	—	0	0	—	—
Minnesota	—	0	0	—	—	—	0	0	—	—	—	0	0	—	—
Missouri	—	0	4	—	2	—	0	0	—	—	—	0	0	—	—
Nebraska	—	0	2	1	1	—	0	0	—	—	—	0	0	—	—
North Dakota	—	0	0	—	—	—	0	0	—	—	—	0	0	—	—
South Dakota	—	0	3	2	3	—	0	0	—	—	—	0	0	—	—
<b>S. Atlantic</b>	5	11	24	49	138	—	0	2	—	2	—	0	1	—	—
Delaware	—	0	0	—	—	—	0	0	—	—	—	0	0	—	—
District of Columbia	—	0	0	—	—	—	0	0	—	—	—	0	0	—	—
Florida	1	0	9	19	81	—	0	2	—	1	—	0	0	—	—
Georgia	—	0	0	—	—	—	0	0	—	—	—	0	0	—	—
Maryland	—	5	21	8	31	—	0	0	—	1	—	0	1	—	—
North Carolina	4	5	10	21	23	—	0	0	—	—	—	0	0	—	—
South Carolina	N	0	0	N	N	—	0	0	—	—	—	0	0	—	—
Virginia	—	0	0	—	—	—	0	0	—	—	—	0	0	—	—
West Virginia	—	0	3	1	3	—	0	0	—	—	—	0	0	—	—
<b>E.S. Central</b>	1	1	7	6	13	—	0	0	—	—	—	0	0	—	—
Alabama	1	1	7	6	13	—	0	0	—	—	—	0	0	—	—
Kentucky	—	0	5	—	—	—	0	0	—	—	—	0	0	—	—
Mississippi	—	0	1	—	—	—	0	0	—	—	—	0	0	—	—
Tennessee	—	0	0	—	—	—	0	0	—	—	—	0	0	—	—
<b>W.S. Central</b>	2	13	42	32	52	—	0	0	—	—	—	0	1	1	—
Arkansas	—	0	4	3	—	—	0	0	—	—	—	0	0	—	—
Louisiana	—	0	0	—	—	—	0	0	—	—	—	0	0	—	—
Oklahoma	—	0	23	3	3	—	0	0	—	—	—	0	0	—	—
Texas	2	12	42	26	49	—	0	0	—	—	—	0	1	1	—
<b>Mountain</b>	—	1	8	—	4	—	0	0	—	—	—	0	0	—	—
Arizona	N	0	0	N	N	—	0	0	—	—	—	0	0	—	—
Colorado	—	0	0	—	—	—	0	0	—	—	—	0	0	—	—
Idaho	—	0	5	—	—	—	0	0	—	—	—	0	0	—	—
Montana	—	0	0	—	—	—	0	0	—	—	—	0	0	—	—
Nevada	—	0	2	—	—	—	0	0	—	—	—	0	0	—	—
New Mexico	—	0	1	—	1	—	0	0	—	—	—	0	0	—	—
Utah	—	0	3	—	—	—	0	0	—	—	—	0	0	—	—
Wyoming	—	0	5	—	3	—	0	0	—	—	—	0	0	—	—
<b>Pacific</b>	—	0	8	2	15	—	0	0	—	—	—	0	0	—	—
Alaska	—	0	3	2	6	—	0	0	—	—	—	0	0	—	—
California	—	0	5	—	9	—	0	0	—	—	—	0	0	—	—
Hawaii	—	0	0	—	—	—	0	0	—	—	—	0	0	—	—
Oregon	—	0	2	—	—	—	0	0	—	—	—	0	0	—	—
Washington	—	0	0	—	—	—	0	0	—	—	—	0	0	—	—
<b>Territories</b>															
American Samoa	U	0	0	U	U	—	0	0	—	—	—	0	0	—	—
C.N.M.I.	—	—	—	—	—	—	—	—	—	—	—	—	—	—	—
Guam	—	0	0	—	—	—	0	0	—	—	—	0	0	—	—
Puerto Rico	—	0	0	—	—	—	0	0	—	—	—	0	0	—	—
U.S. Virgin Islands	—	0	0	—	—	—	0	0	—	—	—	0	0	—	—

C.N.M.I.: Commonwealth of Northern Mariana Islands.

U: Unavailable. —: No reported cases. N: Not reportable. NN: Not Nationally Notifiable. NP: Nationally notifiable but not published. Cum: Cumulative year-to-date counts. Med: Median. Max: Maximum.

\* Three low incidence conditions, rubella, rubella congenital, and tetanus, are in Table II to facilitate case count verification with reporting jurisdictions.

<sup>†</sup> Case counts for reporting years 2016 and 2017 are provisional and subject to change. For further information on interpretation of these data, see <http://www.cdc.gov/nndss/document/ProvisionalNationalNotifiableDiseasesSurveillanceData20100927.pdf>. Data for tuberculosis are displayed in Table IV, which appears quarterly.

Morbidity and Mortality Weekly Report

TABLE II. (Continued) Provisional cases of selected notifiable diseases (≥1,000 cases reported during the preceding year), and selected\* low frequency diseases, United States and U.S. territories, weeks ending February 25, 2017, and February 27, 2016 (8th week)<sup>†</sup> (Export data)

Reporting area	Salmonellosis					Shiga toxin-producing <i>E. coli</i> (STEC) <sup>§</sup>					Shigellosis				
	Current week	Previous 52 weeks		Cum 2017	Cum 2016	Current week	Previous 52 weeks		Cum 2017	Cum 2016	Current week	Previous 52 weeks		Cum 2017	Cum 2016
		Med	Max				Med	Max				Med	Max		
<b>United States</b>	216	862	1,633	3,037	4,533	13	133	262	344	566	98	374	477	1,372	3,280
<b>New England</b>	—	39	80	137	189	—	5	38	13	26	—	5	13	30	30
Connecticut	—	8	22	30	46	—	1	34	1	4	—	1	4	4	3
Maine	—	2	7	4	10	—	0	3	—	2	—	0	1	1	—
Massachusetts	—	21	55	89	101	—	2	7	10	16	—	3	8	17	22
New Hampshire	—	3	9	6	14	—	0	3	1	2	—	0	3	4	1
Rhode Island	—	2	6	6	6	—	0	2	—	—	—	0	4	1	4
Vermont	—	1	10	2	12	—	0	2	1	2	—	0	1	3	—
<b>Mid. Atlantic</b>	27	83	198	320	383	4	13	30	59	63	7	26	52	118	222
New Jersey	—	15	55	20	97	—	2	7	4	18	—	4	10	14	44
New York (Upstate)	11	26	65	97	100	2	4	16	15	12	—	4	12	18	26
New York City	11	19	42	107	80	1	2	9	15	9	6	8	17	57	69
Pennsylvania	5	25	66	96	106	1	4	13	25	24	1	10	30	29	83
<b>E.N. Central</b>	13	103	191	222	563	—	15	88	32	78	26	60	102	251	631
Illinois	—	32	63	28	179	—	3	63	3	21	—	9	22	10	102
Indiana	—	10	28	12	63	—	1	8	2	5	—	4	14	8	58
Michigan	—	18	35	67	91	—	3	12	10	19	1	11	31	33	56
Ohio	13	26	68	111	141	—	4	14	16	13	25	20	30	144	249
Wisconsin	—	15	30	4	89	—	4	13	1	20	—	10	39	56	166
<b>W.N. Central</b>	16	47	202	212	266	2	17	41	44	60	5	25	70	95	423
Iowa	1	13	58	65	79	—	4	21	10	12	—	6	31	13	91
Kansas	1	8	25	31	36	—	2	7	5	8	—	4	15	37	63
Minnesota	—	0	0	—	—	—	0	0	—	—	—	0	0	—	—
Missouri	7	18	42	69	85	1	5	19	11	17	5	10	47	40	243
Nebraska	7	5	14	33	26	1	2	9	11	15	—	2	14	5	22
North Dakota	—	2	10	9	14	—	1	3	6	2	—	0	2	—	1
South Dakota	—	3	107	5	26	—	1	9	1	6	—	0	2	—	3
<b>S. Atlantic</b>	76	215	499	883	1,183	2	12	29	54	67	17	48	83	231	421
Delaware	—	2	17	3	5	—	0	2	—	—	—	1	6	7	4
District of Columbia	—	0	3	—	2	—	0	1	—	2	—	0	2	—	2
Florida	55	107	213	476	594	1	3	8	18	31	11	13	32	79	120
Georgia	7	42	159	142	162	—	2	9	13	6	4	12	29	59	128
Maryland	10	14	38	85	81	1	1	5	9	10	1	3	9	31	22
North Carolina	—	28	93	40	145	—	1	4	1	6	—	8	28	15	56
South Carolina	1	17	68	76	104	—	0	2	3	4	—	3	10	24	47
Virginia	3	22	44	49	77	—	2	8	10	4	—	7	15	15	41
West Virginia	—	3	10	12	13	—	0	3	—	4	1	0	2	1	1
<b>E.S. Central</b>	13	71	205	254	427	—	5	13	24	40	10	15	28	129	130
Alabama	4	23	48	86	156	—	0	3	4	4	2	4	10	33	55
Kentucky	—	10	77	37	117	—	1	5	3	9	1	5	14	41	39
Mississippi	7	19	57	66	69	—	0	2	1	2	2	2	5	22	7
Tennessee	2	19	105	65	85	—	3	8	16	25	5	4	13	33	29
<b>W.S. Central</b>	24	146	324	369	545	—	23	46	18	60	21	95	162	215	773
Arkansas	3	13	45	39	35	—	2	7	3	4	2	2	13	30	26
Louisiana	10	10	41	90	113	—	0	2	2	1	5	4	16	34	33
Oklahoma	2	14	52	38	45	—	2	14	2	5	1	7	68	12	109
Texas	9	103	298	202	352	—	17	43	11	50	13	74	130	139	605
<b>Mountain</b>	22	53	97	274	299	3	16	32	41	65	10	31	56	105	312
Arizona	9	17	34	106	88	2	3	8	14	15	5	20	49	56	261
Colorado	9	12	33	74	70	1	4	11	9	19	5	3	16	35	14
Idaho	1	3	10	22	18	—	3	12	11	16	—	0	4	2	10
Montana	1	3	8	9	13	—	2	15	2	7	—	0	2	—	1
Nevada	—	3	9	5	19	—	1	4	1	5	—	0	10	1	7
New Mexico	—	6	17	23	36	—	1	5	1	1	—	3	22	11	8
Utah	2	6	11	32	49	—	2	5	3	1	—	1	5	—	9
Wyoming	—	1	5	3	6	—	0	2	—	1	—	0	1	—	2
<b>Pacific</b>	25	118	188	366	678	2	23	66	59	107	2	43	77	198	338
Alaska	—	1	5	5	10	—	0	2	1	2	—	0	1	1	—
California	3	88	151	258	541	—	15	38	37	85	2	38	69	177	257
Hawaii	1	5	16	25	39	—	0	3	5	3	—	0	5	1	9
Oregon	2	8	23	33	40	1	3	16	14	17	—	1	5	11	48
Washington	19	13	47	45	48	1	2	37	2	—	—	3	14	8	24
<b>Territories</b>															
American Samoa	—	0	0	—	—	—	0	0	—	—	—	0	0	—	—
C.N.M.I.	—	—	—	—	—	—	—	—	—	—	—	—	—	—	—
Guam	—	0	0	—	—	—	0	0	—	—	—	0	0	—	—
Puerto Rico	—	10	25	23	88	—	0	0	—	—	—	0	4	—	5
U.S. Virgin Islands	—	0	0	—	—	—	0	0	—	—	—	0	0	—	—

C.N.M.I.: Commonwealth of Northern Mariana Islands.

U: Unavailable. —: No reported cases. N: Not reportable. NN: Not Nationally Notifiable. NP: Nationally notifiable but not published. Cum: Cumulative year-to-date counts. Med: Median. Max: Maximum.

\* Three low incidence conditions, rubella, rubella congenital, and tetanus, are in Table II to facilitate case count verification with reporting jurisdictions.

<sup>†</sup> Case counts for reporting years 2016 and 2017 are provisional and subject to change. For further information on interpretation of these data, see <http://www.cdc.gov/nndss/document/ProvisionalNationalNotifiableDiseasesSurveillanceData20100927.pdf>. Data for tuberculosis are displayed in Table IV, which appears quarterly.

<sup>§</sup> Includes *E. coli* O157:H7, Shiga toxin-positive, serogroup non-O157, and Shiga toxin-positive, not serogrouped.



Morbidity and Mortality Weekly Report

TABLE II. (Continued) Provisional cases of selected notifiable diseases (≥1,000 cases reported during the preceding year), and selected\* low frequency diseases, United States and U.S. territories, weeks ending February 25, 2017, and February 27, 2016 (8th week)<sup>†</sup> (Export data)

Reporting area	Spotted Fever Rickettsiosis <sup>§</sup>										Syphilis, primary and secondary				
	Confirmed					Probable					Current week	Previous 52 weeks		Cum 2017	Cum 2016
	Current week	Previous 52 weeks		Cum 2017	Cum 2016	Current week	Previous 52 weeks		Cum 2017	Cum 2016		Med	Max		
United States	1	3	11	4	8	1	59	216	53	82	84	515	610	2,172	4,193
New England	—	0	0	—	—	—	0	2	1	—	2	14	29	49	146
Connecticut	—	0	0	—	—	—	0	0	—	—	—	1	7	3	23
Maine	—	0	0	—	—	—	0	1	1	—	—	1	4	3	8
Massachusetts	—	0	0	—	—	—	0	2	—	—	—	8	19	32	84
New Hampshire	—	0	0	—	—	—	0	1	—	—	2	1	11	10	11
Rhode Island	—	0	0	—	—	—	0	1	—	—	—	1	15	—	15
Vermont	—	0	0	—	—	—	0	1	—	—	—	0	3	1	5
Mid. Atlantic	—	0	1	—	—	1	2	13	5	7	13	66	91	308	512
New Jersey	—	0	1	—	—	—	1	8	3	2	—	7	16	10	75
New York (Upstate)	—	0	1	—	—	1	0	2	1	1	6	10	21	63	47
New York City	—	0	0	—	—	—	0	3	—	2	4	35	49	150	279
Pennsylvania	—	0	1	—	—	—	0	3	1	2	3	15	24	85	111
E.N. Central	—	0	2	—	—	—	2	15	—	2	2	50	67	132	435
Illinois	—	0	1	—	—	—	1	7	—	—	—	22	38	3	178
Indiana	—	0	0	—	—	—	0	6	—	—	2	6	12	34	56
Michigan	—	0	1	—	—	—	0	2	—	1	—	6	12	11	56
Ohio	—	0	1	—	—	—	0	4	—	—	—	13	22	64	122
Wisconsin	—	0	0	—	—	—	0	2	—	1	—	2	6	20	23
W.N. Central	—	0	2	—	—	—	7	28	2	5	3	18	29	64	170
Iowa	—	0	0	—	—	—	0	2	—	—	1	1	4	8	14
Kansas	—	0	1	—	—	—	1	10	—	1	—	2	6	15	15
Minnesota	—	0	0	—	—	—	0	0	—	—	—	5	11	—	62
Missouri	—	0	1	—	—	—	5	22	2	4	2	7	14	37	70
Nebraska	—	0	0	—	—	—	0	4	—	—	—	1	6	2	2
North Dakota	—	0	0	—	—	—	0	1	—	—	—	0	3	2	4
South Dakota	—	0	1	—	—	—	0	2	—	—	—	0	2	—	3
S. Atlantic	—	1	10	2	6	—	17	44	8	23	6	111	162	372	1,016
Delaware	—	0	0	—	—	—	0	3	—	3	1	0	7	2	15
District of Columbia	—	0	1	—	—	—	0	1	—	—	—	2	7	2	17
Florida	—	0	1	1	—	—	0	2	2	—	4	47	66	266	316
Georgia	—	1	8	1	6	—	0	0	—	—	—	21	41	—	292
Maryland	—	0	2	—	—	—	1	6	2	—	1	8	15	30	86
North Carolina	—	0	2	—	—	—	7	29	—	11	—	19	28	37	172
South Carolina	—	0	1	—	—	—	0	2	2	2	—	5	13	33	63
Virginia	—	0	1	—	—	—	4	19	2	7	—	1	41	—	46
West Virginia	—	0	0	—	—	—	0	2	—	—	—	0	4	2	9
E.S. Central	—	0	4	—	2	—	21	65	22	33	4	22	38	82	176
Alabama	—	0	1	—	—	—	7	24	5	14	—	6	14	24	43
Kentucky	—	0	2	—	1	—	2	11	8	8	3	3	12	18	28
Mississippi	—	0	0	—	—	—	1	7	2	2	—	5	13	26	37
Tennessee	—	0	1	—	1	—	10	40	7	9	1	6	13	14	68
W.S. Central	—	0	1	—	—	—	10	80	14	9	23	57	77	373	470
Arkansas	—	0	1	—	—	—	8	75	10	9	—	2	11	14	27
Louisiana	—	0	0	—	—	—	0	1	1	—	2	12	30	52	95
Oklahoma	—	0	1	—	—	—	0	2	—	—	—	2	9	3	50
Texas	—	0	1	—	—	—	1	7	3	—	21	38	55	304	298
Mountain	1	0	2	2	—	—	0	2	1	—	3	31	55	134	252
Arizona	1	0	2	2	—	—	0	1	1	—	—	13	23	47	98
Colorado	—	0	0	—	—	—	0	0	—	—	3	4	14	31	38
Idaho	—	0	1	—	—	—	0	1	—	—	—	1	3	1	13
Montana	—	0	1	—	—	—	0	1	—	—	—	0	2	—	3
Nevada	—	0	0	—	—	—	0	1	—	—	—	8	25	41	48
New Mexico	—	0	0	—	—	—	0	0	—	—	—	3	11	11	35
Utah	—	0	0	—	—	—	0	1	—	—	—	1	6	2	17
Wyoming	—	0	0	—	—	—	0	1	—	—	—	0	1	1	—
Pacific	—	0	1	—	—	—	0	2	—	3	28	127	157	658	1,016
Alaska	N	0	0	N	N	N	0	0	N	N	—	0	1	—	—
California	—	0	0	—	—	—	0	2	—	3	14	109	144	559	876
Hawaii	N	0	0	N	N	N	0	0	N	N	2	1	6	7	14
Oregon	—	0	1	—	—	—	0	1	—	—	5	6	15	35	53
Washington	—	0	0	—	—	—	0	0	—	—	7	9	21	57	73
Territories															
American Samoa	N	0	0	N	N	N	0	0	N	N	—	0	0	—	—
C.N.M.I.	—	—	—	—	—	—	—	—	—	—	—	—	—	—	—
Guam	N	0	0	N	N	N	0	0	N	N	—	0	0	—	—
Puerto Rico	N	0	0	N	N	N	0	0	N	N	—	8	26	37	86
U.S. Virgin Islands	—	0	0	—	—	—	0	0	—	—	—	0	0	—	—

C.N.M.I.: Commonwealth of Northern Mariana Islands.

U: Unavailable. —: No reported cases. N: Not reportable. NN: Not Nationally Notifiable. NP: Nationally notifiable but not published. Cum: Cumulative year-to-date counts. Med: Median. Max: Maximum.

\* Three low incidence conditions, rubella, rubella congenital, and tetanus, are in Table II to facilitate case count verification with reporting jurisdictions.

<sup>†</sup> Case counts for reporting years 2016 and 2017 are provisional and subject to change. For further information on interpretation of these data, see <http://www.cdc.gov/nndss/document/ProvisionalNationalNotifiableDiseasesSurveillanceData20100927.pdf>. Data for tuberculosis are displayed in Table IV, which appears quarterly.

<sup>§</sup> Illnesses with similar clinical presentation that result from Spotted Fever Group Rickettsia infections are reported as Spotted Fever Rickettsioses. Rocky Mountain Spotted Fever (RMSF), caused by *Rickettsia rickettsii*, is the most common and well-known Spotted Fever.

Morbidity and Mortality Weekly Report

TABLE II. (Continued) Provisional cases of selected notifiable diseases (≥1,000 cases reported during the preceding year), and selected\* low frequency diseases, United States and U.S. territories, weeks ending February 25, 2017, and February 27, 2016 (8th week)<sup>†</sup> (Export data)

Reporting area	Tetanus					Varicella (chickenpox)				
	Current week	Previous 52 weeks		Cum 2017	Cum 2016	Current week	Previous 52 weeks		Cum 2017	Cum 2016
		Med	Max				Med	Max		
<b>United States</b>	—	1	3	5	2	81	139	206	873	1,330
<b>New England</b>	—	0	1	—	—	7	12	27	75	129
Connecticut	—	0	0	—	—	—	2	6	14	28
Maine	—	0	1	—	—	6	4	9	28	26
Massachusetts	—	0	0	—	—	—	4	16	17	50
New Hampshire	—	0	0	—	—	—	0	4	—	7
Rhode Island	—	0	0	—	—	1	1	6	10	3
Vermont	—	0	0	—	—	—	0	4	6	15
<b>Mid. Atlantic</b>	—	0	2	—	—	5	16	39	88	150
New Jersey	—	0	0	—	—	—	5	15	16	57
New York (Upstate)	—	0	1	—	—	N	0	0	N	N
New York City	—	0	1	—	—	—	0	0	—	—
Pennsylvania	—	0	1	—	—	5	12	29	72	93
<b>E.N. Central</b>	—	0	1	—	1	16	33	56	204	338
Illinois	—	0	0	—	1	2	7	20	29	78
Indiana	—	0	1	—	—	—	3	9	19	38
Michigan	—	0	1	—	—	2	9	21	56	138
Ohio	—	0	1	—	—	11	8	23	74	80
Wisconsin	—	0	0	—	—	1	3	21	26	4
<b>W.N. Central</b>	—	0	1	1	—	2	11	29	72	93
Iowa	—	0	1	—	—	N	0	0	N	N
Kansas	—	0	0	—	—	—	0	0	—	—
Minnesota	—	0	0	—	—	—	6	16	39	42
Missouri	—	0	0	—	—	1	3	8	27	25
Nebraska	—	0	1	1	—	1	0	2	2	7
North Dakota	—	0	0	—	—	—	0	21	2	10
South Dakota	—	0	0	—	—	—	0	4	2	9
<b>S. Atlantic</b>	—	0	1	2	—	17	22	40	140	257
Delaware	—	0	0	—	—	—	0	3	2	3
District of Columbia	—	0	0	—	—	—	0	1	—	—
Florida	—	0	1	1	—	17	12	29	109	179
Georgia	—	0	0	—	—	—	3	7	11	20
Maryland	—	0	1	1	—	N	0	0	N	N
North Carolina	—	0	0	—	—	N	0	0	N	N
South Carolina	—	0	0	—	—	—	1	9	17	16
Virginia	—	0	1	—	—	—	4	12	1	35
West Virginia	—	0	0	—	—	—	0	1	—	4
<b>E.S. Central</b>	—	0	1	—	—	—	2	6	16	24
Alabama	—	0	1	—	—	—	1	5	15	23
Kentucky	—	0	1	—	—	N	0	0	N	N
Mississippi	—	0	1	—	—	—	0	2	1	1
Tennessee	—	0	1	—	—	N	0	0	N	N
<b>W.S. Central</b>	—	0	1	—	—	25	24	65	165	188
Arkansas	—	0	0	—	—	3	2	10	11	31
Louisiana	—	0	0	—	—	—	0	4	1	11
Oklahoma	—	0	1	—	—	N	0	0	N	N
Texas	—	0	1	—	—	22	23	62	153	146
<b>Mountain</b>	—	0	1	2	1	9	11	34	97	138
Arizona	—	0	0	—	1	2	4	13	33	52
Colorado	—	0	0	—	—	6	0	18	32	—
Idaho	—	0	1	1	—	N	0	0	N	N
Montana	—	0	0	—	—	—	1	6	3	16
Nevada	—	0	1	1	—	N	0	0	N	N
New Mexico	—	0	0	—	—	—	1	5	7	6
Utah	—	0	0	—	—	1	3	10	22	63
Wyoming	—	0	0	—	—	—	0	2	—	1
<b>Pacific</b>	—	0	1	—	—	—	2	6	16	13
Alaska	—	0	1	—	—	—	0	2	5	2
California	—	0	1	—	—	—	0	4	4	4
Hawaii	—	0	0	—	—	—	0	5	7	7
Oregon	—	0	0	—	—	N	0	0	N	N
Washington	—	0	0	—	—	N	0	0	N	N
<b>Territories</b>										
American Samoa	—	0	0	—	—	N	0	0	N	N
C.N.M.I.	—	—	—	—	—	—	—	—	—	—
Guam	—	0	0	—	—	—	0	0	—	—
Puerto Rico	—	0	0	—	—	—	1	6	2	9
U.S. Virgin Islands	—	0	0	—	—	—	0	0	—	—

C.N.M.I.: Commonwealth of Northern Mariana Islands.

U: Unavailable. —: No reported cases. N: Not reportable. NN: Not Nationally Notifiable. NP: Nationally notifiable but not published. Cum: Cumulative year-to-date counts. Med: Median. Max: Maximum.

\* Three low incidence conditions, rubella, rubella congenital, and tetanus, are in Table II to facilitate case count verification with reporting jurisdictions.

<sup>†</sup> Case counts for reporting years 2016 and 2017 are provisional and subject to change. For further information on interpretation of these data, see <http://www.cdc.gov/nndss/document/ProvisionalNationalNotifiableDiseasesSurveillanceData20100927.pdf>. Data for tuberculosis are displayed in Table IV, which appears quarterly.

Morbidity and Mortality Weekly Report

TABLE II. (Continued) Provisional cases of selected notifiable diseases (≥1,000 cases reported during the preceding year), and selected\* low frequency diseases, United States and U.S. territories, weeks ending February 25, 2017, and February 27, 2016 (8th week)<sup>†</sup> (Export data)

Reporting area	Vibriosis (Any species of the family <i>Vibrionaceae</i> , other than toxigenic <i>Vibrio cholerae</i> O1 or O139) <sup>§</sup>									
	Confirmed				Probable					
	Current week	Previous 52 weeks		Cum 2017	Cum 2016	Current week	Previous 52 weeks		Cum 2017	Cum 2016
	Med	Max				Med	Max			
<b>United States</b>	7	16	72	56	69	3	0	3	15	5
<b>New England</b>	2	1	14	3	4	—	0	1	—	—
Connecticut	—	0	3	—	—	—	0	0	—	—
Maine	2	0	2	2	—	—	0	0	—	—
Massachusetts	—	0	7	1	2	—	0	0	—	—
New Hampshire	—	0	1	—	1	—	0	1	—	—
Rhode Island	—	0	3	—	1	—	0	0	—	—
Vermont	—	0	0	—	—	—	0	0	—	—
<b>Mid. Atlantic</b>	1	1	10	7	2	1	0	1	1	4
New Jersey	—	0	4	—	—	—	0	1	—	—
New York (Upstate)	—	0	5	4	1	—	0	0	—	4
New York City	1	0	3	2	1	—	0	1	—	—
Pennsylvania	—	0	3	1	—	1	0	0	1	—
<b>E.N. Central</b>	1	1	5	2	5	1	0	1	3	—
Illinois	—	0	3	—	2	—	0	0	—	—
Indiana	—	0	2	—	2	—	0	0	—	—
Michigan	—	0	1	—	1	—	0	1	1	—
Ohio	1	0	2	2	—	1	0	0	1	—
Wisconsin	—	0	1	—	—	—	0	1	1	—
<b>W.N. Central</b>	—	0	2	—	2	1	0	1	1	—
Iowa	—	0	0	—	—	—	0	0	—	—
Kansas	—	0	2	—	—	—	0	0	—	—
Minnesota	—	0	0	—	—	—	0	0	—	—
Missouri	—	0	1	—	1	1	0	0	1	—
Nebraska	—	0	0	—	—	—	0	1	—	—
North Dakota	—	0	1	—	1	—	0	0	—	—
South Dakota	—	0	1	—	—	—	0	0	—	—
<b>S. Atlantic</b>	2	7	21	25	20	—	0	2	4	1
Delaware	—	0	3	—	—	—	0	0	—	—
District of Columbia	—	0	0	—	—	—	0	0	—	—
Florida	1	3	10	21	13	—	0	1	1	—
Georgia	—	0	3	—	4	—	0	0	—	—
Maryland	1	1	7	3	—	—	0	1	1	1
North Carolina	—	0	3	—	1	—	0	2	2	—
South Carolina	—	0	3	—	2	—	0	0	—	—
Virginia	—	0	6	1	—	—	0	0	—	—
West Virginia	—	0	1	—	—	—	0	0	—	—
<b>E.S. Central</b>	—	1	5	1	9	—	0	1	—	—
Alabama	—	0	4	1	3	—	0	0	—	—
Kentucky	—	0	1	—	3	—	0	0	—	—
Mississippi	—	0	1	—	—	—	0	0	—	—
Tennessee	—	0	1	—	3	—	0	1	—	—
<b>W.S. Central</b>	—	2	11	4	7	—	0	1	1	—
Arkansas	—	0	1	—	—	—	0	0	—	—
Louisiana	—	0	3	3	4	—	0	1	1	—
Oklahoma	—	0	1	—	—	—	0	0	—	—
Texas	—	1	9	1	3	—	0	0	—	—
<b>Mountain</b>	—	1	4	3	2	—	0	2	5	—
Arizona	—	0	3	—	—	—	0	1	1	—
Colorado	—	0	2	1	1	—	0	1	3	—
Idaho	—	0	0	—	—	—	0	0	—	—
Montana	—	0	1	1	—	—	0	0	—	—
Nevada	—	0	1	—	—	—	0	1	—	—
New Mexico	—	0	0	—	—	—	0	0	—	—
Utah	—	0	1	1	1	—	0	1	1	—
Wyoming	—	0	1	—	—	—	0	0	—	—
<b>Pacific</b>	1	3	22	11	18	—	0	1	—	—
Alaska	—	0	2	—	—	—	0	0	—	—
California	—	1	10	6	11	—	0	0	—	—
Hawaii	1	0	3	2	4	—	0	1	—	—
Oregon	—	0	3	3	3	—	0	1	—	—
Washington	—	0	16	—	—	—	0	1	—	—
<b>Territories</b>										
American Samoa	—	0	0	—	—	—	0	0	—	—
C.N.M.I.	—	—	—	—	—	—	—	—	—	—
Guam	—	0	0	—	—	—	0	0	—	—
Puerto Rico	—	0	0	—	—	—	0	0	—	—
U.S. Virgin Islands	—	0	0	—	—	—	0	0	—	—

C.N.M.I.: Commonwealth of Northern Mariana Islands.

U: Unavailable. —: No reported cases. N: Not reportable. NN: Not Nationally Notifiable. NP: Nationally notifiable but not published. Cum: Cumulative year-to-date counts. Med: Median.

Max: Maximum.

\* Three low incidence conditions, rubella, rubella congenital, and tetanus, are in Table II to facilitate case count verification with reporting jurisdictions.

<sup>†</sup> Case counts for reporting years 2016 and 2017 are provisional and subject to change. For further information on interpretation of these data, see <http://www.cdc.gov/nndss/document/ProvisionalNationalNotifiableDiseasesSurveillanceData20100927.pdf>. Data for tuberculosis are displayed in Table IV, which appears quarterly.

<sup>§</sup> The national surveillance case definition was revised in 2017 to include infections confirmed by culture-independent diagnostic tests as probable cases.

Morbidity and Mortality Weekly Report

TABLE II. (Continued) Provisional cases of selected notifiable diseases (≥1,000 cases reported during the preceding year), and selected\* low frequency diseases, United States and U.S. territories, weeks ending February 25, 2017, and February 27, 2016 (8th week)<sup>†</sup> (Export data)

Reporting area	West Nile virus disease <sup>§</sup>									
	Neuroinvasive				Nonneuroinvasive <sup>¶</sup>					
	Current week	Previous 52 weeks		Cum 2017	Cum 2016	Current week	Previous 52 weeks		Cum 2017	Cum 2016
	Med	Max	Med			Max				
<b>United States</b>	—	9	105	—	—	—	5	112	1	1
<b>New England</b>	—	0	3	—	—	—	0	3	—	—
Connecticut	—	0	1	—	—	—	0	0	—	—
Maine	—	0	0	—	—	—	0	0	—	—
Massachusetts	—	0	2	—	—	—	0	2	—	—
New Hampshire	—	0	0	—	—	—	0	0	—	—
Rhode Island	—	0	1	—	—	—	0	0	—	—
Vermont	—	0	1	—	—	—	0	1	—	—
<b>Mid. Atlantic</b>	—	0	6	—	—	—	0	4	—	—
New Jersey	—	0	1	—	—	—	0	0	—	—
New York (Upstate)	—	0	0	—	—	—	0	4	—	—
New York City	—	0	3	—	—	—	0	0	—	—
Pennsylvania	—	0	2	—	—	—	0	1	—	—
<b>E.N. Central</b>	—	0	17	—	—	—	0	29	1	—
Illinois	—	0	0	—	—	—	0	27	1	—
Indiana	—	0	4	—	—	—	0	1	—	—
Michigan	—	0	10	—	—	—	0	1	—	—
Ohio	—	0	3	—	—	—	0	2	—	—
Wisconsin	—	0	2	—	—	—	0	2	—	—
<b>W.N. Central</b>	—	0	17	—	—	—	0	48	—	—
Iowa	—	0	3	—	—	—	0	5	—	—
Kansas	—	0	3	—	—	—	0	2	—	—
Minnesota	—	0	3	—	—	—	0	13	—	—
Missouri	—	0	3	—	—	—	0	1	—	—
Nebraska	—	0	7	—	—	—	0	7	—	—
North Dakota	—	0	6	—	—	—	0	11	—	—
South Dakota	—	0	8	—	—	—	0	16	—	—
<b>S. Atlantic</b>	—	0	6	—	—	—	0	2	—	—
Delaware	—	0	0	—	—	—	0	0	—	—
District of Columbia	—	0	1	—	—	—	0	0	—	—
Florida	—	0	3	—	—	—	0	1	—	—
Georgia	—	0	2	—	—	—	0	1	—	—
Maryland	—	0	1	—	—	—	0	0	—	—
North Carolina	—	0	1	—	—	—	0	0	—	—
South Carolina	—	0	2	—	—	—	0	2	—	—
Virginia	—	0	2	—	—	—	0	1	—	—
West Virginia	—	0	0	—	—	—	0	1	—	—
<b>E.S. Central</b>	—	0	4	—	—	—	0	4	—	—
Alabama	—	0	1	—	—	—	0	2	—	—
Kentucky	—	0	1	—	—	—	0	1	—	—
Mississippi	—	0	4	—	—	—	0	2	—	—
Tennessee	—	0	1	—	—	—	0	1	—	—
<b>W.S. Central</b>	—	2	20	—	—	—	1	12	—	—
Arkansas	—	0	2	—	—	—	0	1	—	—
Louisiana	—	0	6	—	—	—	0	3	—	—
Oklahoma	—	0	3	—	—	—	0	3	—	—
Texas	—	1	18	—	—	—	0	10	—	—
<b>Mountain</b>	—	0	17	—	—	—	0	23	—	1
Arizona	—	0	6	—	—	—	0	3	—	1
Colorado	—	0	9	—	—	—	0	16	—	—
Idaho	—	0	1	—	—	—	0	2	—	—
Montana	—	0	1	—	—	—	0	1	—	—
Nevada	—	0	2	—	—	—	0	1	—	—
New Mexico	—	0	2	—	—	—	0	0	—	—
Utah	—	0	3	—	—	—	0	2	—	—
Wyoming	—	0	2	—	—	—	0	2	—	—
<b>Pacific</b>	—	1	43	—	—	—	0	24	—	—
Alaska	—	0	0	—	—	—	0	0	—	—
California	—	1	42	—	—	—	0	23	—	—
Hawaii	—	0	0	—	—	—	0	0	—	—
Oregon	—	0	1	—	—	—	0	1	—	—
Washington	—	0	3	—	—	—	0	1	—	—
<b>Territories</b>										
American Samoa	—	0	0	—	—	—	0	0	—	—
C.N.M.I.	—	—	—	—	—	—	—	—	—	—
Guam	—	0	0	—	—	—	0	0	—	—
Puerto Rico	—	0	0	—	—	—	0	0	—	—
U.S. Virgin Islands	—	0	0	—	—	—	0	0	—	—

C.N.M.I.: Commonwealth of Northern Mariana Islands.

U: Unavailable. —: No reported cases. N: Not reportable. NN: Not Nationally Notifiable. NP: Nationally notifiable but not published. Cum: Cumulative year-to-date counts. Med: Median.

Max: Maximum.

\* Three low incidence conditions, rubella, rubella congenital, and tetanus, are in Table II to facilitate case count verification with reporting jurisdictions.

<sup>†</sup> Case counts for reporting years 2016 and 2017 are provisional and subject to change. For further information on interpretation of these data, see <http://www.cdc.gov/nndss/document/ProvisionalNationalNotifiableDiseasesSurveillanceData20100927.pdf>. Data for tuberculosis are displayed in Table IV, which appears quarterly.

<sup>§</sup> Updated weekly from the Division of Vector-Borne Diseases, National Center for Emerging and Zoonotic Infectious Diseases (ArboNET Surveillance). Data for Jamestown Canyon virus, La Crosse virus, Chikungunya virus, Eastern equine encephalitis virus, Powassan virus, St. Louis virus, and Western equine encephalitis virus diseases are available in Table I.

<sup>¶</sup> Not reportable in all states. Reporting exceptions are available at <http://www.cdc.gov/nndss/downloads.html>.