



MMWR™

Morbidity and Mortality Weekly Report

www.cdc.gov/mmwr

Weekly

November 14, 2008 / Vol. 57 / No. 45

Great American Smokeout – November 20, 2008

Approximately 43.4 million (or one in five) U.S. adults are current smokers (1), and smoking and exposure to tobacco smoke result in approximately 443,000 premature deaths in the United States annually (2). November 20, 2008, marks the American Cancer Society's 32nd annual Great American Smokeout, an event that encourages smokers to quit for at least 1 day (in the hope that this might challenge them to stop using tobacco permanently) and that raises awareness of the many effective ways to quit for good.

Smoking cessation has substantial and immediate health benefits, and smokers who use proven interventions (e.g., assistance from a health-care provider, pharmacotherapies approved by the Food and Drug Administration, and behavioral counseling) greatly increase their likelihood of quitting permanently (3). Smokers in all 50 states, the District of Columbia, and certain U.S. territories who want help in quitting can telephone 800-QUIT-NOW (800-784-8669) for free telephone counseling or referrals.

Information about the Great American Smokeout is available at http://www.cancer.org/docroot/ped/ped_10_4.asp or by telephone at 800-227-2345. Advice on how to quit smoking is available at <http://www.smokefree.gov>.

References

1. CDC. Cigarette smoking among adults—United States, 2007. *MMWR* 2008;57:1221–6.
2. CDC. Smoking-attributable mortality, years of potential life lost, and productivity losses—United States, 2000–2004. *MMWR* 2008; 57:1226–8.
3. Fiore MC, Jaen CR, Baker TB, et al. Treating tobacco use and dependence: 2008 update. Clinical practice guideline. Rockville, MD: US Department of Health and Human Services, Public Health Service; 2008. Available at <http://www.ncbi.nlm.nih.gov/books/bv.fcgi?rid=hstat2.chapter.28163>.

Cigarette Smoking Among Adults – United States, 2007

One of the national health objectives for 2010 is to reduce the prevalence of cigarette smoking among adults to $\leq 12\%$ (objective 27.1a) (1). To assess progress toward this objective, each year CDC analyzes self-reported data from the National Health Interview Survey (NHIS). This report summarizes findings for 2007, which indicated that approximately 19.8% of adults were current smokers in 2007, a decrease of 1.0 percentage point from 2006 (20.8%) (2). Cigarette smoking has declined during the past 40 years among all sociodemographic subpopulations of adults; however, the declines during the past decade have been smaller than in previous decades. The proportion of current everyday smokers who made a quit attempt during the preceding year decreased 7.2 percentage points from 1993 (47.0%) to 2007 (39.8%). During 1993–2007, young adults (aged 18–24 years) consistently had the highest prevalence of quitting for >1 day during the preceding year (59.3% in 1993 and 53.1% in 2007). Prevention of initiation and smoking cessation at all ages is beneficial in reducing morbidity and mortality. Clinicians should strongly advise smokers to quit and recommend they use effective cessation treatments (3). Health insurers, health insurance purchasers, and health systems should assist clinicians in making effective treatments available by including counseling and medications for smoking cessation as covered benefits and should support effective community interventions for cessation, including increased excise taxes, mass media campaigns, and smoke-free laws (3,4).

INSIDE

- 1226 Smoking-Attributable Mortality, Years of Potential Life Lost, and Productivity Losses — United States, 2000–2004
- 1229 Deaths from Chronic Obstructive Pulmonary Disease — United States, 2000–2005
- 1232 Notices to Readers
- 1234 QuickStats

The *MMWR* series of publications is published by the Coordinating Center for Health Information and Service, Centers for Disease Control and Prevention (CDC), U.S. Department of Health and Human Services, Atlanta, GA 30333.

Suggested Citation: Centers for Disease Control and Prevention. [Article title]. *MMWR* 2008;57:[inclusive page numbers].

Centers for Disease Control and Prevention

Julie L. Gerberding, MD, MPH
Director

Tanja Popovic, MD, PhD
Chief Science Officer

James W. Stephens, PhD
Associate Director for Science

Steven L. Solomon, MD
Director, Coordinating Center for Health Information and Service

Jay M. Bernhardt, PhD, MPH
Director, National Center for Health Marketing

Katherine L. Daniel, PhD
Deputy Director, National Center for Health Marketing

Editorial and Production Staff

Frederic E. Shaw, MD, JD
Editor, MMWR Series

Susan F. Davis, MD
(Acting) Assistant Editor, MMWR Series

Teresa F. Rutledge
Managing Editor, MMWR Series

Douglas W. Weatherwax
Lead Technical Writer-Editor

Donald G. Meadows, MA
Jude C. Rutledge
Writers-Editors

Martha F. Boyd
Lead Visual Information Specialist

Malbea A. LaPete
Stephen R. Spriggs
Visual Information Specialists

Kim L. Bright, MBA
Quang M. Doan, MBA
Phyllis H. King
Information Technology Specialists

Editorial Board

William L. Roper, MD, MPH, Chapel Hill, NC, Chairman

Virginia A. Caine, MD, Indianapolis, IN

David W. Fleming, MD, Seattle, WA

William E. Halperin, MD, DrPH, MPH, Newark, NJ

Margaret A. Hamburg, MD, Washington, DC

King K. Holmes, MD, PhD, Seattle, WA

Deborah Holtzman, PhD, Atlanta, GA

John K. Iglehart, Bethesda, MD

Dennis G. Maki, MD, Madison, WI

Sue Mallonee, MPH, Oklahoma City, OK

Patricia Quinlisk, MD, MPH, Des Moines, IA

Patrick L. Remington, MD, MPH, Madison, WI

Barbara K. Rimer, DrPH, Chapel Hill, NC

John V. Rullan, MD, MPH, San Juan, PR

William Schaffner, MD, Nashville, TN

Anne Schuchat, MD, Atlanta, GA

Dixie E. Snider, MD, MPH, Atlanta, GA

John W. Ward, MD, Atlanta, GA

The 2007 NHIS adult core questionnaire, which contained questions on cigarette smoking and cessation attempts, was administered by in-person interview to a nationally representative sample of the noninstitutionalized, U.S. civilian population aged ≥ 18 years ($N = 23,393$). One adult per selected household was chosen randomly to participate in the survey. NHIS oversampled for blacks, Hispanics, and Asians aged ≥ 65 years, who were selected at twice the probability of other adults in the household.* The total household response rate was 87.1%, and the overall survey response rate for the sample adult component of the survey was 67.8%. Smoking status was classified based on the respondent's answers to the following questions: "Have you smoked at least 100 cigarettes in your entire life?" and "Do you now smoke cigarettes every day, some days, or not at all?" Current smokers reported they had smoked 100 cigarettes or more during their lifetime and currently smoke every day or some days. Former smokers reported smoking at least 100 cigarettes during their lifetime and currently do not smoke. The prevalence of one or more cessation attempts during the preceding year was assessed among current everyday smokers and included those who responded "yes" to the question, "During the past 12 months, have you stopped smoking for more than one day because you were trying to quit smoking?" Data were adjusted for nonresponse and weighted to provide national estimates of cigarette smoking prevalence and quit attempts; 95% confidence intervals were calculated using statistical software to account for the multi-stage probability sample design. For all comparisons, statistical significance was determined using a two-sided z test; differences were considered statistically significant at $p \leq 0.05$.

In 2007, an estimated 19.8% (43.4 million) of U.S. adults were current cigarette smokers; of these, 77.8% (33.8 million) smoked every day, and 22.2% (9.6 million) smoked some days. In 2007, 39.8% (13.4 million) of adult current everyday smokers had stopped smoking for > 1 day during the preceding 12 months because they were trying to quit. Among the estimated 86.8 million adults who had smoked at least 100 cigarettes in their lifetime (defined as ever smokers), 52.1% (47.3 million) were no longer smoking at the time of the interview.

Smoking prevalence was higher among men (22.3%) than women (17.4%) ($p < 0.01$) (Table). Among the different racial/ethnic populations, Asians (9.6%) had the lowest smoking prevalence, whereas American Indians/Alaska Natives (36.4%) had significantly higher prevalence than the other racial/ethnic populations ($p < 0.05$ for all comparisons). Smoking prevalence among whites (21.4%) and blacks (19.8%) was

* For this report, persons identified as white, black, Asian, and American Indian/Alaska Native are all non-Hispanic. Persons identified as Hispanic might be of any race.

TABLE. Estimated percentage of adults aged ≥18 years who were current smokers,* by sex and selected characteristics — National Health Interview Survey, United States, 2006 and 2007

Characteristic	Men		Women		Total	
	2006 (n = 10,715)	2007 (n = 10,173)	2006 (n = 13,560)	2007 (n = 12,817)	2006 (N = 24,275)	2007 (N = 22,990)
	% (95% CI) [†]	% (95% CI)	% (95% CI)	% (95% CI)	% (95% CI)	% (95% CI)
Race/Ethnicity[§]						
White, non-Hispanic	24.3 (23.0–25.6)	23.1 (21.6–24.6)	19.7 (18.6–20.8)	19.8 (18.7–20.9)	21.9 (21.0–22.8)	21.4 (20.4–22.4)
Black, non-Hispanic	27.6 (24.2–31.0)	24.8 (22.0–27.6)	19.2 (17.3–21.1)	15.8 (13.7–17.9)	23.0 (21.1–24.9)	19.8 (18.2–21.4)
Hispanic	20.1 (17.8–22.4)	18.0 (15.5–20.5)	10.1 (8.5–11.7)	8.3 (6.7–9.9)	15.2 (13.7–16.7)	13.3 (11.7–14.9)
Asian, non-Hispanic [¶]	16.8 (13.1–20.5)	15.9 (12.8–19.0)	4.6 (3.0–6.2)	4.0 (2.4–5.6)	10.4 (8.4–12.4)	9.6 (8.0–11.2)
American Indian/Alaska Native, non-Hispanic**	35.6 (18.7–52.5)	36.7 (18.9–54.5)	29.0 (15.7–42.3)	36.0 (20.2–51.8)	32.4 (19.7–45.1)	36.4 (22.9–49.9)
Education^{††}						
0–12 yrs (no diploma)	30.6 (27.9–33.3)	29.5 (26.9–32.1)	23.0 (20.7–25.3)	20.2 (18.0–22.4)	26.7 (25.0–28.4)	24.8 (23.1–26.5)
<8 yrs	22.3 (18.5–26.1)	20.4 (17.0–23.8)	12.3 (9.7–14.9)	10.0 (7.7–12.3)	17.4 (15.1–19.7)	15.4 (13.2–17.6)
9–11 yrs	40.1 (35.7–44.5)	36.9 (32.4–41.4)	31.4 (27.7–35.1)	30.0 (26.1–33.9)	35.4 (32.5–38.3)	33.3 (30.4–36.2)
12 yrs (no diploma)	27.9 (21.5–34.3)	33.1 (25.2–41.4)	23.3 (17.5–29.1)	14.8 (10.3–19.3)	25.6 (21.2–30.0)	22.7 (18.1–27.3)
High school diploma	27.6 (25.3–29.9)	27.4 (24.9–29.9)	20.4 (18.7–22.1)	20.4 (18.3–22.5)	23.8 (22.3–25.3)	23.7 (22.0–25.4)
GED ^{§§} diploma	51.3 (43.4–59.2)	49.6 (42.0–57.2)	40.2 (33.2–47.2)	38.9 (31.8–46.0)	46.0 (40.5–51.5)	44.0 (39.0–49.0)
Associate degree	25.4 (22.1–28.7)	21.2 (18.1–24.3)	17.8 (15.2–20.4)	18.9 (16.4–21.4)	21.2 (19.1–23.3)	19.9 (17.8–22.0)
Some college (includes associate degree)	26.1 (24.2–28.0)	22.5 (20.2–24.8)	20.0 (18.3–21.7)	19.5 (18.0–21.0)	22.7 (21.4–24.0)	20.9 (19.5–22.3)
Undergraduate degree	10.8 (9.0–12.6)	13.4 (10.7–16.1)	8.4 (7.0–9.8)	9.4 (8.0–10.8)	9.6 (8.5–10.7)	11.4 (9.9–12.9)
Graduate degree	7.3 (5.4–9.2)	6.4 (4.7–8.1)	5.8 (4.1–7.5)	6.0 (4.5–7.5)	6.6 (5.3–7.9)	6.2 (5.1–7.3)
Age group (yrs)						
18–24	28.5 (24.7–32.3)	25.4 (22.1–28.7)	19.3 (16.7–21.9)	19.1 (16.2–22.0)	23.9 (21.7–26.1)	22.2 (19.9–24.5)
25–44	26.0 (24.3–27.7)	26.0 (24.1–27.9)	21.0 (19.7–22.3)	19.6 (18.1–21.1)	23.5 (22.4–24.6)	22.8 (21.5–24.1)
45–64	24.5 (22.7–26.3)	22.6 (20.8–24.4)	19.3 (17.9–20.7)	19.5 (18.0–21.0)	21.8 (20.6–23.0)	21.0 (19.7–22.3)
≥65	12.6 (10.6–14.6)	9.3 (7.8–10.8)	8.3 (7.0–9.6)	7.6 (6.3–8.9)	10.2 (9.2–11.2)	8.3 (7.3–9.3)
Poverty status^{¶¶}						
At or above federal poverty level	22.9 (21.6–24.2)	22.8 (21.4–24.2)	17.8 (16.8–18.8)	17.8 (16.6–19.0)	20.4 (19.6–21.2)	20.3 (19.3–21.3)
Below federal poverty level	34.0 (30.0–38.0)	32.4 (28.3–36.5)	28.0 (25.2–30.8)	26.3 (23.3–29.3)	30.6 (28.0–33.2)	28.8 (26.2–31.4)
Unknown	23.3 (21.0–25.6)	17.6 (15.1–20.1)	14.2 (12.6–15.8)	13.4 (11.2–15.6)	18.3 (16.9–19.7)	15.2 (13.6–16.8)
Total	23.9 (22.8–25.0)	22.3 (21.1–23.5)	18.0 (17.2–18.8)	17.4 (16.5–18.3)	20.8 (20.1–21.5)	19.8 (19.0–20.6)

* Persons who reported smoking at least 100 cigarettes during their lifetimes and who, at the time of interview, reported smoking every day or some days. 2006 estimates exclude 315 respondents whose smoking status was unknown, and 2007 estimates exclude 403 respondents whose smoking status was unknown.

† Confidence interval.

§ 2006 estimates exclude 266 respondents of unknown race or multiple races, and 2007 estimates exclude 317 respondents of unknown race or multiple races.

¶ Does not include Native Hawaiians or Other Pacific Islanders.

** Wide variances reflect small sample sizes.

†† Among persons aged >25 years. 2006 estimates exclude 305 persons whose education level was unknown, and 2007 estimates exclude 1,770 persons whose education level was unknown.

§§ General Educational Development.

¶¶ 2006 estimates are based on family income reported by respondents and 2005 poverty thresholds (published by the U.S. Census Bureau), and 2007 estimates are based on family income reported by respondents and 2006 poverty thresholds.

significantly higher than among Hispanics (13.3%) ($p < 0.01$ for both comparisons).

Smoking prevalence also varied by education level among adults aged >25 years. Adults who had a General Education Development (GED) diploma (44.0%) and those with 9–11 years of education (33.3%) had the highest prevalence of current smoking. Those who had an undergraduate or graduate degree had the lowest smoking prevalence (11.4% and 6.2%, respectively). By age group, the prevalence of smoking was lowest among those aged ≥ 65 years (8.3%), compared with those aged <65 years (persons aged 18–24 years [22.2%], aged 25–44 years [22.8%], and aged 45–64 years [21.0%]). Smoking among adults whose incomes were below the federal poverty level (28.8%) was significantly higher than those whose incomes were at or above this level (20.3%) ($p < 0.02$).[†]

The prevalence of cigarette smoking among adults was significantly lower in 2007 (19.8%) than in 2006 (20.8%) ($p = 0.05$). Subgroups with significant decreases in smoking prevalence from 2006 to 2007 included blacks (from 23.0% in 2006 to 19.8% in 2007 [$p = 0.01$]) and adults aged ≥ 65 years (from 10.2% in 2006 to 8.3% in 2007 [$p = 0.01$]).

From 1993 (the first year that quit attempt data were collected in NHIS with everyday smokers identified separately) to 2007, the prevalence of a quit attempt during the preceding 12 months among everyday smokers decreased ($p < 0.01$); these decreases were significant among those aged 25–44 years ($p < 0.01$) and ≥ 65 years ($p = 0.02$) (Figure). In each year, the proportion of current everyday smokers who tried to quit during the preceding 12 months decreased with increasing age, and young adults aged 18–24 years were significantly more likely to have made a quit attempt than older adults ($p < 0.05$ for all comparisons). In 2007, the proportion of current everyday smokers who tried to quit was 53.1% among persons aged 18–24 years, 39.9% among those aged 25–44 years, 38.1% among those aged 45–64 years, and 25.3% among those aged ≥ 65 years.

Reported by: *SL Thorne, MPH, A Malarcher, PhD, E Maurice, MSPH, R Caraballo, PhD, Office on Smoking and Health, National Center for Chronic Disease Prevention and Health Promotion, CDC.*

Editorial Note: After 3 years during which prevalence in current cigarette smoking among adults remained virtually unchanged (20.9% in 2004, 20.9% in 2005, and 20.8% in 2006), the prevalence in 2007 (19.8%) was significantly lower than in 2006 (2). For 5 consecutive years, the prevalence of smoking among women remained below 20% (19.2% in 2003, 18.5% in 2004, 18.2% in 2005, 18.0% in 2006, and 17.4% in 2007); however, variability existed among the subgroups of women. Also, for 6 consecutive years, former

smokers outnumbered current smokers. During the past 40 years, smoking prevalence has declined overall and among each sociodemographic subpopulation.[§] However, large disparities in smoking prevalence continue to exist by race/ethnicity and education level. The continuing higher prevalence among several populations, such as American Indians/Alaska Natives (36.4%), persons with GED diplomas (44.0%), and persons reporting family incomes below the federal poverty level (28.8%), emphasizes the need for more effective policy and environmental and individual-level interventions to reach and assist these subpopulations.

The trends in smoking prevalence from NHIS data showing a slow decrease from the 1990s through the early- and mid-2000s are similar to trends in other national surveys (e.g., the National Household Survey on Drug Use and Health and the Tobacco Control Supplement to the Current Population Survey[¶]). NHIS data on smoking prevalence is the primary measure used to assess progress in meeting the *Healthy People 2010* objective of reducing smoking among adults to $\leq 12\%$, and these data indicate that the objective likely will not be met. Before 2007, several population subgroups had met the *Healthy People 2010* smoking prevalence objective of $\leq 12\%$ and, in 2007, these same subpopulations continued to meet this goal. Subpopulations who continued to meet this goal in 2007 include Hispanic (8.3%) and Asian (4.0%) women, women with 0–8 years of education (10.0%) or undergraduate (9.4%) or graduate degrees (6.0%), and women aged ≥ 65 years (7.6%). Men with graduate degrees (6.4%) and men aged ≥ 65 years (9.3%) also met this goal.

The percentage of everyday smokers who attempted to quit for >1 day during the preceding 12 months decreased during 1993–2007. The lack of funding for comprehensive state tobacco-control programs likely has remained a barrier to achieving progress in increasing smokers' quit attempts. In fiscal year 2005, investments by states in tobacco control varied; the mean per capita expenditure was \$2.76, with some states investing approximately \$11.00, whereas others invested nothing (4). CDC recommends a per capita annual expenditure of \$9.23 to \$18.03 by state comprehensive tobacco-control programs to implement effective programs (5).

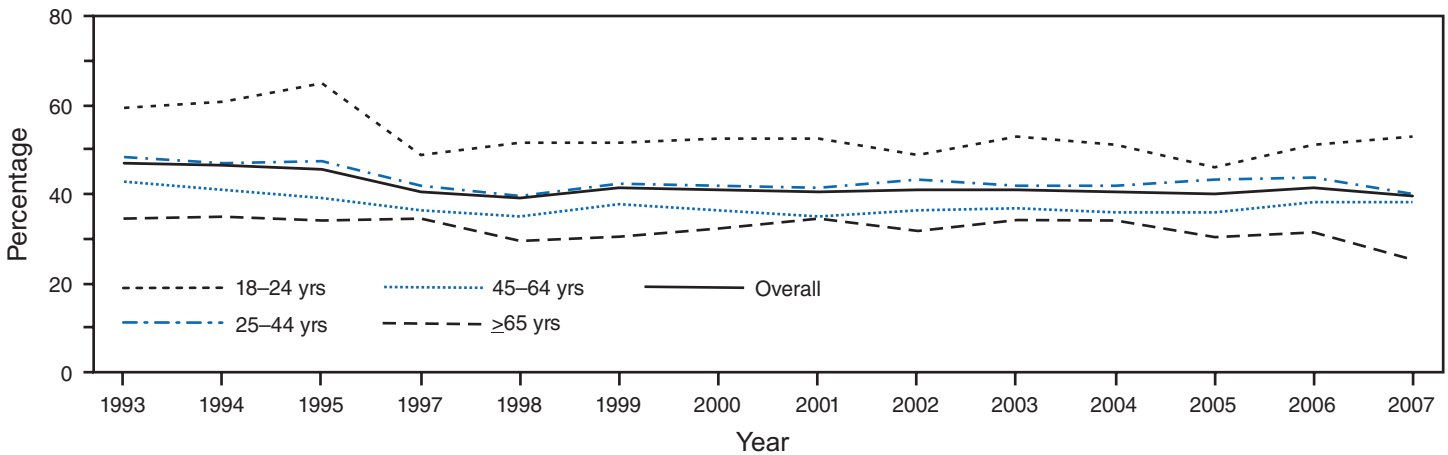
The majority of smokers who attempt to quit do not use recommended cessation methods (3), and most of these untreated smokers relapse within the first 8 days after quitting; an estimated 24%–51% are abstinent at 1 week, 15%–28% are abstinent at 1 month, and 10%–20% are abstinent at 3 months (6). Of untreated adult smokers who try to quit smoking each

[§] Additional information available at http://www.cdc.gov/tobacco/data_statistics/tables/adult/table_2.htm.

[¶] Available at <http://www.oas.samhsa.gov/nsduhlatest.htm> and <http://riskfactor.cancer.gov/studies/tus-cps>, respectively.

[†] 2007 estimates are based on family income reported by respondents and 2006 poverty thresholds (published by the U.S. Census Bureau).

FIGURE. Estimated percentage of adult current everyday smokers* who quit for >1 day† during the preceding year, by age group — National Health Interview Survey, United States, 1993–2007



* Persons who reported smoking at least 100 cigarettes during their lifetimes and who, at the time of the interview, reported smoking every day.

† Persons who reported that, during the preceding 12 months, they had stopped smoking for >1 day because they were trying to quit smoking.

year, only 4%–7% are likely to be successful (3). Among daily smokers, younger adults (aged 18–24 years) were more likely to try to quit smoking during the preceding year than older adults. This finding is consistent with other national studies (7). Young adults have lower levels of addiction, are less likely to be heavy smokers, and are more likely to have smoke-free homes than older adults; lower levels of dependence and having a smoke-free home are associated with increases in trying to quit during the preceding year (7). Smoking cessation is beneficial at any age; however, quitting at younger ages is associated with greater decreases in premature mortality (8).

The findings in this report are subject to at least three limitations. First, estimates of cigarette smoking were based on self-report and were not validated with biochemical tests. However, self-reported smoking status has validity when compared with measured serum cotinine levels and yields similar population prevalence estimates (9). Second, the NHIS questionnaire is administered in English and Spanish only, which might affect estimates for racial/ethnic populations who do not speak English or Spanish primarily. Finally, single-year estimates with large confidence intervals for certain population groups (e.g., American Indians/Alaska Natives) primarily resulted from small sample sizes.

Tobacco use screening with a brief cessation intervention is one of the top three clinical preventive services that have been found to be cost-saving (10). Effective clinical cessation interventions include brief interventions by clinicians; individual, group, or telephone counseling; and the following pharmacologic therapies: Bupropion SR, Varenicline, and nicotine gum, inhaler, lozenge, nasal spray, or patch (3). Clinicians and health-care delivery systems need to consistently identify and document tobacco use status, treat every tobacco user seen in

the health-care setting, and promote patients' use of quitlines (available countrywide through the toll-free access number 1-800 QUIT-NOW) (3). These effective clinical approaches should be part of a comprehensive tobacco-control program that includes increasing the real price of tobacco products, implementing smoke-free policies, and increasing health insurance coverage for effective cessation interventions; with wider implementation of these policies and programs, greater progress in reducing smoking prevalence among adults could be attained (4,5).

References

1. US Department of Health and Human Services. Tobacco use in population groups: reduce tobacco use in adults. Cigarette smoking (27-1a). In: Healthy people 2010 (conference ed, in 2 vols). Washington, DC: US Department of Health and Human Services; 2000. Available at http://www.healthypeople.gov/document/html/volume2/27/tobacco.htm#_toc489766222.
2. CDC. Cigarette smoking among adults—United States, 2006. *MMWR* 2007;56:1157–61.
3. Fiore MC, Jaen CR, Baker TB, et al. Treating tobacco use and dependence: 2008 update. Clinical practice guideline. Rockville, MD: US Department of Health and Human Services, Public Health Service; 2008. Available at http://www.surgeongeneral.gov/tobacco/treating_tobacco_use08.pdf.
4. Institute of Medicine. Ending the tobacco problem: a blueprint for the nation. Washington, DC: National Academies Press; 2007.
5. CDC. Best practices for comprehensive tobacco control programs—2007. Atlanta, GA, US Department of Health and Human Services, CDC; 2007. Available at http://www.cdc.gov/tobacco/tobacco_control_programs/state_and_community/best_practices/index.htm.
6. Hughes JR, Keely J, Naud S. Shape of the relapse curve and long-term abstinence among untreated smokers. *Addiction* 2004;99:29–38.
7. Messer K, Trinidad DR, Al-Delaimy WK, Pierce JP. Smoking cessation rates in the United States: a comparison of young adults and older smokers. *Am J Public Health* 2008;98:317–22.
8. Doll R, Peto R, Boreham J, Sutherland I. Mortality in relation to smoking: 50 years' observations on male British doctors. *BMJ* 2004;328:1519.

9. Caraballo RS, Giovino GA, Pechacek TF, Mowery PD. Factors associated with discrepancies between self-reports on cigarette smoking and measured serum cotinine levels among person aged 17 years or older: third National Health and Nutrition Examination Survey, 1988–1994. *Am J Epidemiol* 2001;153:807–14.
10. Maciosek MV, Coffield AB, Edwards NM, et al. Priorities among effective clinical preventive services. *Am J Prev Med* 2006;31:51–1.

Smoking-Attributable Mortality, Years of Potential Life Lost, and Productivity Losses – United States, 2000–2004

Cigarette smoking and exposure to tobacco smoke are associated with premature death from chronic diseases, economic losses to society, and a substantial burden on the United States health-care system. Smoking is the primary causal factor for at least 30% of all cancer deaths, for nearly 80% of deaths from chronic obstructive pulmonary disease, and for early cardiovascular disease and deaths (1). In 2005, to assess the economic and public health burden from smoking, CDC published results of an analysis of smoking-attributable mortality (SAM), years of potential life lost (YPLL), and productivity losses in the United States from smoking during 1997–2001 (2). The analysis was based on data from CDC's Smoking-Attributable Mortality, Morbidity, and Economic Costs (SAMMEC) system,* which estimates SAM, YPLL, and productivity losses based on data from the National Health Interview Survey and death certificate data from the National Center for Health Statistics. This report presents an update of that analysis for 2000–2004, the most recent years for which source data are available. The updated analysis indicated that, during 2000–2004, cigarette smoking and exposure to tobacco smoke resulted in at least 443,000 premature deaths, approximately 5.1 million YPLL, and \$96.8 billion in productivity losses annually in the United States. Comprehensive, national tobacco-control recommendations have been provided to the public health community with the goal of reducing smoking so substantially that it is no longer a significant public health problem in the United States (3,4).

The adult and the maternal and child health SAMMEC software modules were used to estimate SAM, YPLL, and productivity losses attributed to diseases caused by smoking. Sex- and age-specific smoking-attributable deaths were calculated by multiplying the total number of deaths for 19 adult and four infant disease categories (Table) by estimates of the

smoking-attributable fraction (SAF)[†] of preventable deaths. The attributable fractions provide estimates of the public health burden of each risk factor and the relative importance of risk factors for multifactorial diseases. Because of the effect of interactions between various risk factors, attributable fractions for a given disease can total more than 100%. For adults, SAFs were derived using sex-specific relative risk (RR) estimates from the American Cancer Society's Cancer Prevention Study-II (CPS-II) for current and former smokers for each cause of death for the period 1982–1988. For ischemic heart disease and cerebrovascular disease deaths, RR estimates also were stratified by age (35–64 years and ≥65 years). Sex- and age-specific (35–64 years and ≥65 years) current and former cigarette smoking prevalence estimates from the National Health Interview Survey also were used to calculate SAFs. For infants, SAFs were calculated by using pediatric RR estimates and maternal smoking prevalence estimates from birth certificates. Smoking-attributable YPLL and productivity losses were estimated by multiplying sex- and age-specific SAM by remaining life expectancy (5) and lifetime earnings data (6). In addition, smoking-attributable residential fire-related deaths (7) and lung cancer and heart disease deaths attributable to exposure to secondhand smoke (8,9) were included in the SAM, but not in YPLL and productivity loss estimates.

During 2000–2004, smoking resulted in an estimated annual average of 269,655 deaths among males and 173,940 deaths among females in the United States (Table). The three leading specific causes of smoking-attributable death were lung cancer (128,922), ischemic heart disease (126,005), and chronic obstructive pulmonary disease (COPD)[§] (92,915). Among adults aged ≥35 years, 160,848 (41.0%) smoking-attributable deaths were caused by cancer, 128,497 (32.7%) by cardiovascular diseases, and 103,338 (26.3%) by respiratory diseases (excluding deaths from secondhand smoking and from residential fires). Smoking during pregnancy resulted in an estimated 776 infant deaths annually during 2000–2004. An estimated 49,400 lung cancer and heart disease deaths annually were attributable to exposure to secondhand smoke. The average annual SAM estimates also included 736 deaths from smoking-attributable residential fires.

During 2000–2004, on average, smoking accounted for an estimated 3.1 million YPLL for males and approximately 2.0

[†] SAFs for each disease are calculated using the following equation: $SAF = [(p_1(RR_1 - 1) + p_2(RR_2 - 1)) / (p_1(RR_1 - 1) + p_2(RR_2 - 1) + 1)]$ where p_1 = percentage of current smokers (persons who have smoked ≥100 cigarettes and now smoke every day or some days), p_2 = percentage of former smokers (persons who have smoked ≥100 cigarettes and do not currently smoke), RR_1 = relative risk for current smokers relative to never smokers, and RR_2 = relative risk for former smokers relative to never smokers.

[§] COPD includes bronchitis/emphysema (*International Classification of Diseases, Tenth Revision* [ICD-10] codes J40–J42 and J43) and chronic airway obstruction (ICD-10 J44) (1).

* The computations also use other data elements; available at <http://apps.nccd.cdc.gov/sammec>.

TABLE. Annual deaths and estimates* of smoking-attributable mortality (SAM), years of potential life lost (YPLL), and productivity losses, by sex and cause of death — United States, 2000–2004

Causes of death (ICD-10 code†)	Male				Female			
	Deaths	SAM	YPLL	Productivity losses (in thousands) (\$)	Deaths	SAM	YPLL	Productivity losses (in thousands) (\$)
Malignant neoplasm								
Lip, oral cavity, pharynx (C00–C14)	5,126	3,749	65,336	1,613,319	2,494	1,144	19,047	354,635
Esophagus (C15)	9,707	6,961	108,847	2,464,063	2,926	1,631	25,382	433,273
Stomach (C16)	7,056	1,900	27,602	600,702	5,024	584	8,971	157,891
Pancreas (C25)	14,845	3,147	50,201	1,162,577	15,481	3,536	53,334	884,761
Larynx (C32)	2,984	2,446	38,012	853,914	778	563	9,914	186,317
Trachea/lung/bronchus (C33–C34)	90,025	78,680	1,118,359	23,189,096	66,874	46,842	770,655	13,597,333
Cervix uteri (C53)	0	0	0	0	3,774	447	11,918	307,412
Kidney and renal pelvis (C64–65)	7,469	2,827	43,898	997,062	4,527	216	3,722	70,680
Urinary bladder (C67)	8,508	3,907	44,166	742,898	3,951	1,076	13,245	174,529
Acute myeloid leukemia (C92.0)	3,889	855	12,527	272,429	3,189	337	5,496	99,772
Subtotal	149,609	104,472	1,508,948	31,896,060	109,018	56,376	921,684	16,266,603
Cardiovascular diseases								
Ischemic heart disease (I20–I25)	248,506	50,884	804,551	19,019,062	238,845	29,121	389,974	6,068,242
Other heart disease (I00–I09, I26–I51)	72,312	12,944	55,621	1,134,588	95,304	8,060	31,745	428,084
Cerebrovascular disease (I60–I69)	61,616	7,896	127,280	3,075,304	97,681	8,026	140,894	2,878,017
Atherosclerosis (I70–I71)	5,000	1,282	11,814	155,198	8,430	611	5,475	40,423
Aortic aneurysm (I71)	8,861	5,628	70,512	1,339,220	5,862	2,791	34,192	445,625
Other circulatory diseases (I72–I79)	4,238	505	6,636	134,357	5,715	749	9,386	133,702
Subtotal	400,533	79,139	1,076,414	24,857,729	451,837	49,358	611,666	9,994,093
Respiratory diseases								
Pneumonia, influenza (J10–J18)	27,517	6,042	29,828	448,507	35,008	4,381	23,438	273,061
Bronchitis, emphysema (J40–J42, J43)	8,321	7,536	42,842	708,007	7,941	6,391	40,844	532,162
Chronic airways obstruction (J44)	49,774	40,217	421,721	6,306,543	52,328	38,771	462,973	5,545,304
Subtotal	85,612	53,795	494,391	7,463,057	95,277	49,543	527,255	6,350,527
Perinatal conditions								
Short gestation/low birth weight (P07)	2,557	219	16,315	—	2,030	174	13,898	—
Respiratory distress syndrome (P22)	550	18	1,358	—	382	13	1,007	—
Other respiratory (newborn) (P23–28)	786	35	2,611	—	556	25	1,983	—
Sudden infant death syndrome (R95)	1,357	173	12,878	—	935	119	9,531	—
Subtotal	5,250	445	33,161	—	3,903	331	26,419	—
Residential fire	1,600	416	—	—	1,270	320	—	—
Secondhand smoke								
Lung cancer	—	2,131	—	—	—	1,269	—	—
Ischemic heart disease	—	29,256	—	—	—	16,744	—	—
Subtotal	—	31,388	—	—	—	18,012	—	—
Total	269,655	3,112,914	3,112,914	64,216,846	173,940	2,087,024	2,087,024	32,611,223

* CDC estimates from 2000–2004 National Health Interview Survey responses and 2000–2004 National Center for Health Statistics death certificate data; smoking-attributable residential fire-related death estimates from 2002–2005 data; productivity losses in 2004 dollars.

† *International Classification of Diseases and Health Conditions, 10th Revision*; available at <http://www.who.int/classifications/apps/icd/icd10online>.

million YPLL for females annually, excluding deaths from smoking-attributable residential fires and adult deaths from secondhand smoke. Estimates for average annual smoking-attributable productivity losses were approximately \$96.8 billion (\$64.2 billion for males and \$32.6 billion for females) during this period (Table).

Reported by: B Adhikari, PhD, J Kabende, PhD, A Malarcher, PhD, T Pechacek, PhD, V Tong, National Center for Chronic Disease Prevention and Health Promotion, CDC.

Editorial Note: During 2000–2004, an estimated 443,000 persons in the United States died prematurely each year as

a result of smoking or exposure to secondhand smoke. This figure is higher than the average annual estimate of approximately 438,000 deaths during 1997–2001 (2). The number of smoking-attributable deaths varies according to trends in smoking prevalence and the number of deaths from diseases caused by smoking. SAM estimates also change when a causal relationship is established between smoking and a disease not previously included in SAMMEC (1). Although smoking prevalence has declined dramatically since its peak in the 1960s, the number of smoking-attributable deaths has remained relatively unchanged, primarily because of increases in population

size (particularly among older age groups). Even with declines in the rates of various smoking-related diseases (e.g., coronary heart disease), the absolute number of deaths is increasing as the total population increases. In addition, cohorts of smokers with the highest peak prevalence have now reached the ages with the highest incidence of smoking-attributable diseases.

The relative risk estimates used in the calculation of SAM have remained the same. In general, the magnitude of the relationship between smoking and the diseases it causes has remained stable over time (1). However, CDC is continuing to monitor whether the RRs for smoking are changing over time. Future SAMMEC estimates might contain updated RRs, particularly for females, because their adoption of smoking (and hence their duration of smoking) lagged that of males during the early to mid-1900s. Prevalence of smoking among females peaked in the 1960s and in recent cohorts of smokers more closely follows the trend for male smokers. Smoking-attributable fractions are higher for cancers and COPD than for cardiovascular diseases; however, because the absolute number of deaths is highest for coronary heart disease, it contributes a large number of smoking-attributable deaths.

Preventing smoking and increasing cessation rates need to remain priorities of public health professionals who are working to prevent heart disease and stroke. Dramatic declines in smoking-attributable deaths can be achieved by further reducing smoking prevalence rates. Leading causes of death, such as lung cancer and COPD, could become relatively uncommon in future generations if the prevalence of smoking was substantially reduced (1,3).

The findings in this report are subject to at least six limitations. First, the estimates understate deaths attributable to tobacco use because estimates of deaths attributable to cigar smoking, pipe smoking, and smokeless tobacco use were excluded. Although the overall prevalence rates of cigar and pipe smoking and use of smokeless tobacco have remained relatively stable, increased public health concerns about these products might warrant including estimates of deaths attributable to these tobacco products in the future. Second, RRs were based on deaths during 1982–1988 among birth cohorts who might have had different smoking histories than current or former smokers (e.g., age of initiation and duration of smoking before quitting). Third, this report used a death-certificate-based definition of COPD, including codes for bronchitis/emphysema and chronic airway obstruction (ICD-10 J44) (1). Therefore, the COPD SAM estimate used for this report might differ from other estimates that use other definitions of COPD (1). Fourth, RRs were adjusted for the effects of age but not for other potential confounders. However, research suggests that education, alcohol, and other confounders had negligible additional effects on SAM estimates for lung cancer, COPD,

ischemic heart disease, and cerebrovascular disease in CPS-II. Fifth, productivity losses understate the total costs of smoking because costs associated with smoking-attributable health-care expenditures, smoking-related disability, employee absenteeism, and secondhand-smoke-attributable disease morbidity and mortality were not included. Finally, the estimates do not account for the sampling variability in smoking prevalence estimates or RRs.

Cigarette smoking continues to impose substantial health and financial costs on society. During 2001–2004, average annual smoking-attributable health-care expenditures were approximately \$96 billion. Accounting for direct health-care expenditures and productivity losses (approximately \$97 billion), the total economic burden of smoking is approximately \$193 billion per year. By comparison, investments in comprehensive, state-based tobacco prevention and control programs in fiscal year 2007 totaled \$595 million, approximately 325-times less than the smoking-attributable costs (10). Comprehensive statewide tobacco-control programs significantly accelerate declines in consumption and smoking prevalence (4). By increasing their investment in such programs to the levels recommended by CDC, states can further hasten the reduction in cigarette use and reduce the health and economic burden of smoking (3).

References

1. CDC. The health consequences of smoking: a report of the Surgeon General. Atlanta, GA: US Department of Health and Human Services, CDC; 2004. Available at http://www.cdc.gov/tobacco/data_statistics/sgr/sgr_2004/index.htm.
2. CDC. Annual smoking-attributable mortality, years of potential life lost, and economic costs—United States, 1997–2001. *MMWR* 2005;54:625–8.
3. Institute of Medicine. Ending the tobacco problem: a blueprint for the nation. Washington, DC: National Academies Press; 2007.
4. CDC. Best practices for comprehensive tobacco control programs—2007. Atlanta, GA, US Department of Health and Human Services, CDC; 2007. Available at http://www.cdc.gov/tobacco/tobacco_control_programs/stateandcommunity/best_practices/index.htm.
5. Arias E. United States life tables, 2004. *Nat Vital Stat Rep* 2006;56:1–39.
6. Haddix AC, Teutsch SM, Corso PS. Prevention effectiveness: a guide to decision analysis and economic evaluation. 2nd ed. New York, NY: Oxford University Press; 2003.
7. Hall JR Jr. The smoking-material fire problem. Quincy, MA: National Fire Protection Association, Fire Analysis and Research Division; 2007.
8. CDC. The health consequences of involuntary exposure to tobacco smoke: a report of the Surgeon General. Atlanta, GA: US Department of Health and Human Services, CDC; 2006.
9. California Environmental Protection Agency. Proposed identification of environmental tobacco smoke as a toxic air contaminant. Sacramento, CA: Environmental Protection Agency, Office of Environmental Health Hazard Assessment; 2005. Available at http://www.oehha.org/air/environmental_tobacco/2005etsfinal.html.
10. Campaign for Tobacco-Free Kids. A broken promise to our children: the 1998 state tobacco settlement eight years later. Washington, DC: Campaign for Tobacco-Free Kids; 2006. Available at <http://www.tobaccofreekids.org/reports/settlements/2007/fullreport.pdf>.

Deaths from Chronic Obstructive Pulmonary Disease – United States, 2000–2005

Chronic obstructive pulmonary disease (COPD) is a heterogeneous group of slowly progressive diseases characterized by airflow obstruction that interferes with normal breathing (1). In 2005, approximately one in 20 deaths in the United States had COPD as the underlying cause. Smoking is estimated to be responsible for at least 75% of COPD deaths (2). Excess health-care expenditures are estimated at nearly \$6,000 annually for every COPD patient in the United States (3). To update national estimates of deaths from COPD for the period 2000–2005 (the most recent years for which data are available), CDC analyzed data from the National Vital Statistics System (NVSS). Results of that analysis indicated that an estimated 126,005 deaths of persons aged ≥ 25 years occurred in 2005 with COPD as the underlying cause, an increase of 8% from 116,494 deaths in 2000. Age-standardized COPD mortality rates remained fairly stable during the period overall but decreased among men and increased among women. To decrease the number and rate of COPD deaths, public health programs should continue efforts to reduce all personal exposure to 1) tobacco smoke, including passive smoke exposure; 2) occupational dusts and chemicals; and 3) other indoor and outdoor air pollutants linked to COPD (3). Once COPD is diagnosed, chronic disease management programs should work to prevent further deterioration in lung function and reduce COPD mortality (4).

The numbers of deaths for which COPD was the underlying cause* and population estimates for calculation of rates were obtained from the CDC Wonder compressed mortality database† of the National Vital Statistics System. *International Classification of Diseases, Tenth Revision* (ICD-10) codes were used to identify cases of COPD.§ Annual age-, sex-, and race-specific rates (per 100,000 population) of death from COPD during 2000–2005 were computed by dividing the number of COPD deaths by midyear population estimates, using the

* Underlying cause is defined by the World Health Organization as the disease or injury that initiated the train of morbid events leading directly to death or the circumstances of the accident or violence that produced the fatal injury. The underlying cause is selected from the conditions entered by the physician in the cause-of-death section of the death certificate. When more than one cause or condition is entered by the physician, the underlying cause is determined by the sequence of conditions on the certificate, provisions of the *International Classification of Diseases*, and associated selection rules and modifications. Additional information is available at http://www.cdc.gov/nchs/data/nvsr/nvsr49/nvsr49_08.pdf.

† Available at <http://wonder.cdc.gov/mortssql.html>.

§ ICD-10 codes used were J40 (bronchitis not specified as acute or chronic), J41 (simple and mucopurulent chronic bronchitis), J42 (unspecified chronic bronchitis), J43 (emphysema), and J44 (other chronic obstructive pulmonary disease)(2). Available at <http://www.cdc.gov/nchs/about/major/dvs/icd10des.htm>.

2000 U.S. standard population aged ≥ 25 years for direct age standardization. Rate calculations were restricted to adults aged ≥ 25 years because this group accounted for 99.9% of all COPD deaths.

During 2000–2005, COPD was the underlying cause of death for 718,077 persons overall aged ≥ 25 years in the United States. The number of deaths from COPD increased from 116,494 in 2000 to 121,267 in 2003, decreased to 117,134 in 2004, and increased to 126,005 in 2005 (Table 1). Age-standardized death rates per 100,000 population decreased during 2000–2004; the rate in 2005 was similar to that for 2003.

From 2000 to 2005, the annual number of deaths from COPD increased 5% among men (Table 1), and the number of deaths was higher in 2005 than in 2004. The death rate for men declined during 2000–2005 and was lower in 2004 than in 2005 (Figure 1). Among women, the annual number of deaths increased 11% from 2000 to 2005 and was lower in 2005 than in 2004. The death rate for women increased from 2000 to 2003, decreased in 2004, and increased in 2005 (Figure 1). The death rate was higher for men compared with the rate for women in each year, but the number of deaths was greater for women.

For each year during 2000–2005, COPD mortality rates were higher among whites than among blacks or persons of all other races. During this period, the rate for blacks remained stable, except for 2004, when the rate was lower. In 2005, the death rate among white men was 80.2 (95% confidence interval [CI] = 79.5–80.9) compared with 63.8 (CI = 61.8–65.8) among black men, 60.3 (CI = 59.8–60.8) among white women, and 29.9 (CI = 28.9–30.9) among black women.

By state, in 2005, age-standardized death rates from COPD for adults aged ≥ 25 years ranged from 27.1 per 100,000 in Hawaii to 93.6 per 100,000 population in Oklahoma. States with COPD death rates in the highest quartile were as follows: Idaho, Indiana, Kansas, Kentucky, Maine, Montana, Nevada, Ohio, Oklahoma, Vermont, West Virginia, and Wyoming (Figure 2). Among adults aged 25–64 years, rates ranged from 6.2 (Massachusetts and New Jersey) to 19.2 (Oklahoma) per 100,000 population for men and from 3.8 (New Jersey) to 16.5 (West Virginia) in women (Table 2). Among adults aged ≥ 65 years, rates ranged from 169.0 (Hawaii) to 540.4 (Vermont) per 100,000 population in men and from 94.7 (Hawaii) to 394.9 (Nevada) in women.

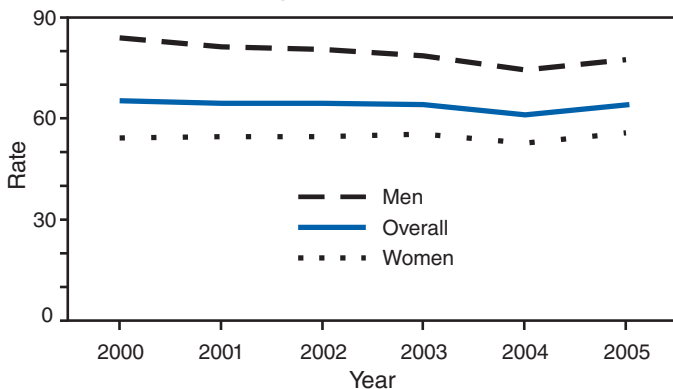
Reported by: DW Brown, PhD, JB Croft, PhD, KJ Greenlund, PhD, WH Giles, MD, Div of Adult and Community Health, National Center for Chronic Disease Prevention and Health Promotion, CDC.

Editorial Note: From 1980 to 2000, the COPD death rate in the United States among women aged ≥ 25 years increased from 20.1 to 56.7 per 100,000 population, while the rate for men aged ≥ 25 years increased from 73.0 to 82.6 per 100,000 population (5). The findings in this report indicate that, during

TABLE 1. Annual number of deaths and rate* of death with chronic obstructive pulmonary disease as the underlying cause among adults aged ≥ 25 years, by age group, sex, and race — National Vital Statistics System, United States, 2000–2005

Characteristic	2000		2001		2002		2003		2004		2005	
	No. of deaths	Rate	No. of deaths	Rate	No. of deaths	Rate	No. of deaths	Rate	No. of deaths	Rate	No. of deaths	Rate
Overall†	116,494	65.2	117,697	64.7	119,480	64.4	121,267	64.3	117,134	61.1	126,005	64.3
Age group (yrs)												
25–44	500	0.6	554	0.7	586	0.7	573	0.7	554	0.7	558	0.7
45–54	2,618	6.9	2,695	6.9	2,842	7.1	2,883	7.1	2,920	7.0	3,356	7.9
55–64	10,130	41.7	10,545	41.7	10,670	40.1	11,451	41.0	11,183	38.5	12,173	40.1
65–74	30,249	164.5	29,942	163.5	29,040	158.9	29,241	159.5	27,740	150.2	29,296	157.2
≥ 75	72,997	439.7	73,961	435.6	76,342	440.6	77,119	438.6	74,737	419.2	80,622	444.2
Sex†												
Men	58,058	83.8	57,908	81.3	58,807	80.4	58,904	78.7	56,940	74.5	60,812	77.3
Women	58,436	54.4	59,789	54.7	60,673	54.6	62,363	55.4	60,194	52.8	65,193	56.0
Race†												
White	68,979	68.5	69,823	68.0	71,947	67.8	72,748	67.9	70,517	64.7	75,883	68.1
Black	3,173	42.6	3,269	41.9	3,508	42.7	3,388	41.4	3,242	38.6	3,657	42.4
All other	845	28.4	869	26.8	887	25.0	983	25.5	978	23.5	1,082	24.0

* Per 100,000 population.

† Age standardized to the 2000 U.S. standard population, aged ≥ 25 years.**FIGURE 1. Age-standardized death rate* from chronic obstructive pulmonary disease among adults aged ≥ 25 years, by sex — National Vital Statistics System, United States, 2000–2005**

* Per 100,000 population.

2000–2005, the overall age-standardized mortality rate from COPD in the United States was fairly stable, but the absolute number of COPD deaths increased 8% from 2000 to 2005. During the period, more women than men died from COPD, and death rates from COPD increased among women while rates decreased among men. The difference in mortality rates between men and women might reflect a delay in mortality related to smoking exposure among women relative to men in the United States in the second half of the 20th century (6). In addition, women might be more susceptible to COPD as a result of sex differences in xenobiotic metabolism, hormones that modify detoxifying enzymes, airway inflammation and responsiveness, and particle deposition (7). The changes in death rates observed in 2004 and 2005 for men, women, and overall suggest a need for continued monitoring to assess whether changes are trending in a more favorable or less favorable pattern.

State-specific variations in COPD mortality might reflect differences in smoking histories and/or differences in other exposures such as occupational exposure across states. Occupational exposure to dust, fumes, and gases accounts for approximately 15% of COPD cases (8).

The findings in this report are subject to at least two limitations. First, data are subject to misclassification of race both in the population census and on death certificates, which might result in overreporting or underreporting of deaths or rates for certain racial groups. Second, data on underlying cause of death might be subject to errors in diagnosis and reporting on the death certificate.

Public health programs that focus on reducing total personal exposure to tobacco smoke, occupational dusts and chemicals, and other indoor and outdoor air pollutants are critically important (4). Although current evidence does not support population screening using office spirometry to detect COPD (9), patients should be identified and treated as early as possible in the course of the disease. Disease prevention is the ultimate goal, but once COPD has been diagnosed, effective management should be aimed at relieving symptoms; preventing disease progression; improving exercise tolerance, daily activity, and health status; preventing and treating complications and exacerbations; and reducing mortality (4,9). No treatment has been shown to effectively modify the rate of decline in lung function; however, evidence supports the use of bronchodilators as the primary pharmacologic therapy to prevent and control symptoms, reduce the frequency and severity of acute exacerbations, and improve quality of life (9). Physicians should be aware of the availability of clinical practice guidelines for the diagnosis and management of COPD and guidelines on smoking cessation among COPD patients.

TABLE 2. Number of deaths and rate* of death with chronic obstructive pulmonary disease as the underlying cause, among adults aged ≥ 25 years, by state, sex, and age group — National Vital Statistics System, United States, 2005

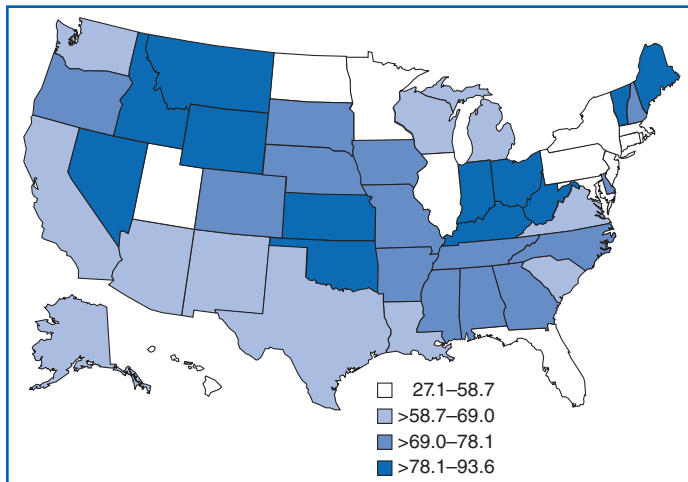
State	Men				Women			
	No. of deaths	Rate†			No. of deaths	Rate†		
		25–64 yrs	≥ 65 yrs	All ages ≥ 25 yrs		25–64 yrs	≥ 65 yrs	All ages ≥ 25 yrs
Alabama	1,212	14.6	442.8	98.3	1,106	10.8	254.6	58.4
Alaska	73	—§	349.5	73.9	72	—	242.0	54.7
Arizona	1,281	10.9	334.5	74.1	1,442	9.2	290.1	64.1
Arkansas	794	16.4	423.2	95.9	714	13.2	254.4	60.3
California	5,944	8.2	326.7	70.5	6,664	6.9	250.2	54.4
Colorado	961	10.6	445.5	95.6	903	6.0	297.8	63.0
Connecticut	626	6.6	291.7	62.3	795	5.4	230.3	49.3
Delaware	184	—	368.4	77.3	214	7.4	290.0	62.6
District of Columbia	58	—	189.8	41.4	65	—	125.5	26.4
Florida	4,436	11.0	294.3	66.3	4,737	8.7	230.5	52.0
Georgia	1,595	12.7	395.3	87.5	1,667	9.5	261.3	58.7
Hawaii	150	—	169.0	36.6	110	—	94.7	20.3
Idaho	365	10.5	458.5	98.1	326	10.0	304.3	67.5
Illinois	2,209	8.1	321.6	69.4	2,608	7.5	237.4	52.4
Indiana	1,621	13.8	452.8	99.6	1,744	12.5	311.0	70.8
Iowa	844	11.4	415.5	90.3	806	9.4	258.5	58.1
Kansas	772	12.1	459.5	99.6	757	9.2	300.9	66.2
Kentucky	1,239	17.5	508.6	113.4	1,268	16.2	328.6	77.2
Louisiana	949	11.3	398.4	87.0	881	8.5	234.6	52.7
Maine	394	11.2	445.8	96.1	419	8.3	325.1	70.2
Maryland	760	6.6	263.4	56.8	1,063	6.0	238.3	51.4
Massachusetts	1,102	6.2	290.4	61.8	1,427	6.7	224.0	49.2
Michigan	2,017	9.0	352.3	76.1	2,287	8.9	258.4	57.7
Minnesota	923	6.7	322.8	68.5	960	6.4	218.7	47.9
Mississippi	763	16.9	461.6	103.8	653	11.7	245.7	57.4
Missouri	1,508	12.6	422.4	92.7	1,494	10.0	272.5	61.3
Montana	287	11.5	454.4	98.1	282	12.3	320.8	72.6
Nebraska	459	9.0	430.5	91.4	438	6.4	272.8	58.5
Nevada	577	10.7	443.2	95.2	632	10.5	394.9	85.6
New Hampshire	265	10.1	347.2	75.9	346	7.3	318.5	68.1
New Jersey	1,330	6.2	265.7	56.9	1,679	3.8	215.6	45.2
New Mexico	425	8.9	382.9	82.0	399	7.0	261.4	56.8
New York	2,907	6.8	258.3	56.0	3,565	6.0	196.4	43.2
North Carolina	2,033	12.2	430.7	94.0	1,972	9.4	265.8	59.5
North Dakota	144	—	325.0	68.8	116	—	179.7	40.1
Ohio	3,062	12.8	440.7	96.4	3,344	11.0	305.3	68.5
Oklahoma	1,159	19.2	514.9	116.1	1,137	15.9	341.8	79.6
Oregon	822	9.7	356.6	77.5	945	9.8	293.9	65.3
Pennsylvania	2,813	8.5	330.3	71.4	3,122	6.5	227.4	49.6
Rhode Island	219	9.2	316.7	69.3	283	9.6	241.2	54.8
South Carolina	965	13.3	387.0	86.4	914	11.0	235.7	54.9
South Dakota	242	12.9	447.7	97.9	182	—	242.5	52.3
Tennessee	1,510	15.8	427.3	96.2	1,566	14.3	284.3	67.0
Texas	3,816	9.6	362.6	78.6	3,850	8.0	246.4	54.6
Utah	322	8.7	294.1	64.5	237	6.2	161.3	36.5
Vermont	192	—	540.4	111.7	178	—	314.0	68.1
Virginia	1,295	7.1	346.9	73.5	1,475	8.0	243.5	54.1
Washington	1,194	8.7	340.8	73.6	1,397	8.3	282.4	61.9
West Virginia	657	15.8	516.1	113.6	658	16.5	329.6	77.7
Wisconsin	1,191	8.3	358.7	76.8	1,161	5.9	234.1	50.5
Wyoming	145	12.7	477.9	103.6	132	14.0	310.7	72.0
Total	60,812	10.0	355.1	77.3	65,193	8.4	252.0	56.0

* Per 100,000 population.

† Age standardized to the 2000 U.S. standard population aged ≥ 25 years.

§ Rate not calculated because of small number of deaths.

FIGURE 2. Rate* of death with chronic obstructive pulmonary disease as the underlying cause, among adults aged ≥ 25 years, by quartile — National Vital Statistics System, 2005



* Per 100,000 population, age standardized to the 2000 U.S. standard population aged ≥ 25 years.

COPD represents an important public health challenge that is both preventable and treatable. Globally, the COPD burden is projected to increase in coming decades because of continued exposure to COPD risk factors and aging of the population (10). Further efforts to improve public recognition of COPD as a public health problem and to increase awareness of COPD symptoms are needed.

References

1. Rennard SI. COPD: overview of definitions, epidemiology, and factors influencing its development. *Chest* 1998;113(Suppl 4):235–41s.
2. CDC. Annual smoking-attributable mortality, years of potential life lost, and productivity losses—United States, 1997–2001. *MMWR* 2005;54:625–8.
3. Miller JD, Foster T, Boulanger L, et al. Direct costs of COPD in the U.S.: an analysis of Medical Expenditure Panel Survey (MEPS) data. *COPD* 2005;2:311–8.
4. Celli BR. Update on the management of COPD. *Chest* 2008;133:1451–62.
5. Mannino DM, Homa DM, Akinbami LJ, Ford ES, Redd SC. Chronic obstructive pulmonary disease surveillance—United States, 1971–2000. *Respir Care* 2002;47:1184–99.
6. Shopland DR. Tobacco use and its contribution to early cancer mortality with a special emphasis on cigarette smoking. *Environ Health Perspect* 1995;103(Suppl 8):131–42.
7. Sin DD, Cohen SB, Day A, Coxson H, Pare PD. Understanding the biological differences in susceptibility to chronic obstructive pulmonary disease between men and women. *Proc Am Thorac Soc* 2007;4:671–4.
8. Balmes J, Becklake M, Blanc P, et al. American Thoracic Society Statement: occupational contribution to the burden of airway disease. *Am J Respir Crit Care Med* 2003;167:787–97.
9. O'Donnell DE, Aaron S, Bourbeau J, et al. Canadian Thoracic Society recommendations for management of chronic obstructive pulmonary disease—2007 update. *Can Respir J* 2007;14(Suppl B):5–32B.
10. Lopez AD, Shibuya K, Rao C, et al. Chronic obstructive pulmonary disease: current burden and future projections. *Eur Respir J* 2006;27:397–412.

Notice to Readers

World COPD Day — November 19, 2008

Chronic obstructive pulmonary disease (COPD) is a growing global public health problem. According to new projections, COPD is predicted to become the third leading cause of death worldwide by 2030 (1). In 2005, COPD was the fourth leading cause of death in the United States. To increase global awareness of COPD, the Global Initiative for Chronic Obstructive Lung Disease (<http://www.goldcopd.com>) is sponsoring World COPD Day on November 19, 2008.

The World Health Organization recently published *Global Surveillance, Prevention and Control of Chronic Respiratory Diseases: a Comprehensive Approach* to raise awareness of the substantial impact of chronic respiratory diseases worldwide and to highlight the risk factors and ways to prevent and treat these diseases. Improving global awareness of COPD will require basic epidemiologic data on COPD risk factors, burden, and surveillance. These data currently are lacking for much of the world's population, particularly persons in low- and middle-income countries.

Smoking is the most important recognized cause of COPD. Other causes include exposure to occupational hazards, air pollution, alpha 1-antitrypsin deficiency (2), and secondhand smoke. All smokers should stop smoking, and all persons should be protected from exposure to secondhand smoke. Many resources are available to help smokers quit. Additional information is available at <http://www.smokefree.gov>, http://www.cdc.gov/tobacco/quit_smoking, or by telephone, 1-800-QUIT-NOW.

COPD is treatable, and early diagnosis is important. Persons at risk for COPD who have cough, sputum production, or shortness of breath should talk with their physicians and be tested for the disease using spirometry, a simple breathing test for assessing lung function (3). Additional information on COPD is available at <http://www.nhlbi.nih.gov/health/public/lung/copd/lmbb-campaign>.

References

1. World Health Organization. World health statistics 2008. Geneva, Switzerland: World Health Organization; 2008. Available at <http://www.who.int/whosis/whostat/2008/en/index.html>.
2. Pauwels RA, Buist AS, Calverley PM, Jenkins CR, Hurd SS, GOLD Scientific Committee. Global strategy for the diagnosis, management, and prevention of chronic obstructive pulmonary disease. NHLBI/WHO Global Initiative for Chronic Obstructive Lung Disease (GOLD) Workshop summary. *Am J Respir Crit Care Med* 2001;163:1256–76.
3. National Heart, Lung, and Blood Institute. COPD Learn More, Breathe Better Campaign. Available at <http://www.nhlbi.nih.gov/health/public/lung/copd/lmbb-campaign/index.htm>.

*Notice to Readers***Twelfth Annual Conference
on Vaccine Research**

CDC and 11 other national and international agencies and organizations will collaborate with the National Foundation for Infectious Diseases in sponsoring the Twelfth Annual Conference on Vaccine Research, April 27–29, 2009, at the Marriott Waterfront Hotel, Baltimore, Maryland. The conference is the largest scientific forum devoted exclusively to the research and development of all vaccines and related technologies for prevention and treatment of disease through immunization. The conference brings together the diverse fields of human and veterinary vaccinology to encourage cross-fertilization of ideas and approaches among researchers otherwise focused on specific diseases or methods.

Twenty invited speakers at five symposia will discuss vaccine safety, immunization programs for global health, synergy between veterinary and human vaccine development, and

tuberculosis and malaria vaccines. Six oral sessions and posters will include presentations selected through peer review from among submitted abstracts.

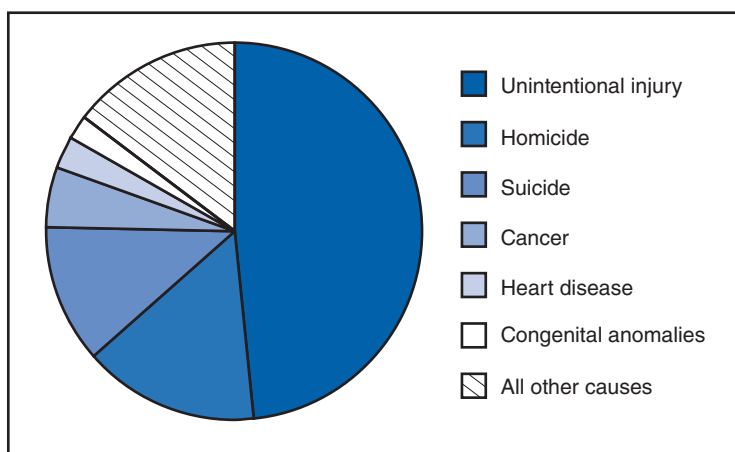
A travel grant program to subsidize attendees from countries with limited resources has an application deadline of December 7, 2008. Deadline for online submission of general abstracts is January 26, 2009. Abstracts from eligible authors may be designated for consideration for the Maurice R. Hilleman Early-Stage Career Investigator Award, which provides \$10,000 for research expenses and a travel stipend and registration for the 2010 conference.

Additional information about the preliminary program, travel grants, abstract submission, registration, hotel accommodation, and exhibition space is available at <http://www.nfid.org/conferences/vaccine09>, by e-mail (vaccine@nfid.org), fax (301-907-0878), by telephone (301-656-0003, ext 19), and by mail (NFID, Suite 750, 4733 Bethesda Avenue, Bethesda, MD 20814-5278).

QuickStats

FROM THE NATIONAL CENTER FOR HEALTH STATISTICS

Percentage of Deaths from Leading Causes Among Teens Aged 15–19 Years — National Vital Statistics System, United States, 2005



In 2005, a total of 13,073 deaths occurred among teens aged 15–19 years. The leading cause of death in this age group was unintentional injury, accounting for 48.3% of the deaths. Homicide accounted for 15.1% of the deaths and suicide for 11.8%, followed by cancer (5.3%), heart disease (2.8%), and congenital anomalies (1.8%).

SOURCE: National Vital Statistics System mortality data available at <http://www.cdc.gov/ncipc/wisqars>. Additional information available at <http://www.cdc.gov/nchs/deaths.htm>.

TABLE 1. Provisional cases of infrequently reported notifiable diseases (<1,000 cases reported during the preceding year) — United States, week ending November 8, 2008 (45th week)*

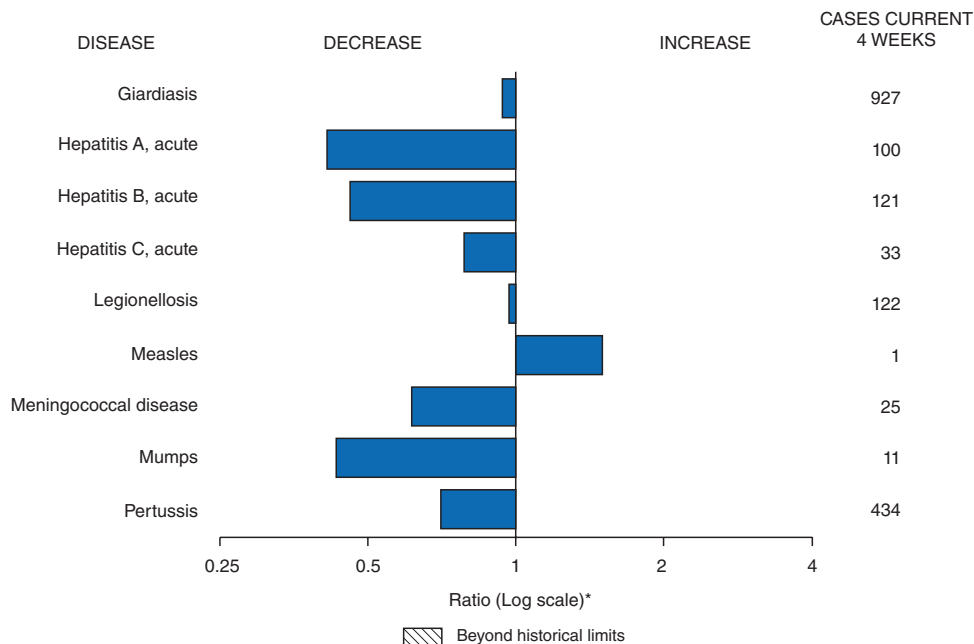
Disease	Current week	Cum 2008	5-year weekly average†	Total cases reported for previous years					States reporting cases during current week (No.)
				2007	2006	2005	2004	2003	
Anthrax	—	—	—	1	1	—	—	—	
Botulism:									
foodborne	—	11	0	32	20	19	16	20	
infant	—	79	1	85	97	85	87	76	
other (wound & unspecified)	—	16	0	27	48	31	30	33	
Brucellosis	1	78	3	131	121	120	114	104	CA (1)
Chancroid	—	29	1	23	33	17	30	54	
Cholera	—	1	0	7	9	8	6	2	
Cyclosporiasis§	1	115	1	93	137	543	160	75	VA (1)
Diphtheria	—	—	0	—	—	—	—	1	
Domestic arboviral diseases§,¶:									
California serogroup	—	35	0	55	67	80	112	108	
eastern equine	—	2	0	4	8	21	6	14	
Powassan	—	1	0	7	1	1	1	—	
St. Louis	—	8	0	9	10	13	12	41	
western equine	—	—	—	—	—	—	—	—	
Ehrlichiosis/Anaplasmosis§,¶,¶:									
<i>Ehrlichia chaffeensis</i>	9	732	8	828	578	506	338	321	OH (1), MN (1), MD (1), VA (1), NC (1), KY (1), TN (1), OK (2)
<i>Ehrlichia ewingii</i>	—	7	—	—	—	—	—	—	
<i>Anaplasma phagocytophilum</i>	7	358	10	834	646	786	537	362	NY (4), MN (2), MD (1)
undetermined	1	64	2	337	231	112	59	44	NY (1)
<i>Haemophilus influenzae</i> ,††									
invasive disease (age <5 yrs):									
serotype b	1	23	0	22	29	9	19	32	NC (1)
nonserotype b	1	139	2	199	175	135	135	117	NY (1)
unknown serotype	2	162	3	180	179	217	177	227	MO (1), GA (1)
Hansen disease§	1	65	2	101	66	87	105	95	OH (1)
Hantavirus pulmonary syndrome§	—	14	1	32	40	26	24	26	
Hemolytic uremic syndrome, postdiarrheal§	—	180	4	292	288	221	200	178	
Hepatitis C viral, acute	7	694	17	849	766	652	720	1,102	IN (1), MD (1), KY (1), NV (1), CA (3)
HIV infection, pediatric (age <13 years)§§	—	—	5	—	—	380	436	504	
Influenza-associated pediatric mortality§,¶¶	1	90	0	77	43	45	—	N	WA (1)
Listeriosis	7	549	16	808	884	896	753	696	PA (1), OH (1), NC (1), FL (1), AZ (1), WA (1), CA (1)
Measles***	1	132	0	43	55	66	37	56	NY (1)
Meningococcal disease, invasive†††:									
A, C, Y, & W-135	2	235	4	325	318	297	—	—	OH (1), OK (1)
serogroup B	2	130	2	167	193	156	—	—	OH (1), TX (1)
other serogroup	—	30	1	35	32	27	—	—	
unknown serogroup	7	522	10	550	651	765	—	—	NY (1), OH (1), MI (1), MO (1), TN (1), OR (1), CA (1)
Mumps	1	349	13	800	6,584	314	258	231	AK (1)
Novel influenza A virus infections	—	—	—	4	N	N	N	N	
Plague	—	1	0	7	17	8	3	1	
Poliomyelitis, paralytic	—	—	—	—	—	1	—	—	
Polio virus infection, nonparalytic§	—	—	—	—	N	N	N	N	
Psittacosis§	—	9	0	12	21	16	12	12	
Qfever§,§§§ total:	2	103	2	171	169	136	70	71	
acute	2	92	—	—	—	—	—	—	NY (2)
chronic	—	11	—	—	—	—	—	—	
Rabies, human	—	—	0	1	3	2	7	2	
Rubella¶¶¶	—	13	—	12	11	11	10	7	
Rubella, congenital syndrome	—	—	—	—	1	1	—	1	
SARS-CoV§,****	—	—	—	—	—	—	—	8	
Smallpox§	—	—	—	—	—	—	—	—	
Streptococcal toxic-shock syndrome§	—	111	1	132	125	129	132	161	
Syphilis, congenital (age <1 yr)	—	187	8	430	349	329	353	413	
Tetanus	—	9	0	28	41	27	34	20	
Toxic-shock syndrome (staphylococcal)§	3	54	1	92	101	90	95	133	KY (1), TN (1), NV (1)
Trichinellosis	—	5	0	5	15	16	5	6	
Tularemia	—	86	1	137	95	154	134	129	
Typhoid fever	4	341	5	434	353	324	322	356	MO (1), CA (3)
Vancomycin-intermediate <i>Staphylococcus aureus</i> §	—	6	0	37	6	2	—	N	
Vancomycin-resistant <i>Staphylococcus aureus</i> §	—	—	0	2	1	3	1	N	
Vibriosis (noncholera <i>Vibrio</i> species infections)§	6	385	5	447	N	N	N	N	MN (1), MD (1), AL (1), AZ (1), CA (2)
Yellow fever	—	—	—	—	—	—	—	—	

See Table 1 footnotes on next page.

TABLE 1. (Continued) Provisional cases of infrequently reported notifiable diseases (<1,000 cases reported during the preceding year) — United States, week ending November 8, 2008 (45th week)*

—: No reported cases. N: Not notifiable. Cum: Cumulative year-to-date counts.
 * Incidence data for reporting year 2008 are provisional, whereas data for 2003, 2004, 2005, 2006, and 2007 are finalized.
 † Calculated by summing the incidence counts for the current week, the 2 weeks preceding the current week, and the 2 weeks following the current week, for a total of 5 preceding years. Additional information is available at <http://www.cdc.gov/epo/dphsi/phs/files/5yearweeklyaverage.pdf>.
 § Not notifiable in all states. Data from states where the condition is not notifiable are excluded from this table, except in 2007 and 2008 for the domestic arboviral diseases and influenza-associated pediatric mortality, and in 2003 for SARS-CoV. Reporting exceptions are available at <http://www.cdc.gov/epo/dphsi/phs/infdis.htm>.
 ¶ Includes both neuroinvasive and nonneuroinvasive. Updated weekly from reports to the Division of Vector-Borne Infectious Diseases, National Center for Zoonotic, Vector-Borne, and Enteric Diseases (ArboNET Surveillance). Data for West Nile virus are available in Table II.
 ** The names of the reporting categories changed in 2008 as a result of revisions to the case definitions. Cases reported prior to 2008 were reported in the categories: Ehrlichiosis, human monocytic (analogous to *E. chaffeensis*); Ehrlichiosis, human granulocytic (analogous to *Anaplasma phagocytophilum*), and Ehrlichiosis, unspecified, or other agent (which included cases unable to be clearly placed in other categories, as well as possible cases of *E. ewingii*).
 †† Data for *H. influenzae* (all ages, all serotypes) are available in Table II.
 §§ Updated monthly from reports to the Division of HIV/AIDS Prevention, National Center for HIV/AIDS, Viral Hepatitis, STD, and TB Prevention. Implementation of HIV reporting influences the number of cases reported. Updates of pediatric HIV data have been temporarily suspended until upgrading of the national HIV/AIDS surveillance data management system is completed. Data for HIV/AIDS, when available, are displayed in Table IV, which appears quarterly.
 ¶¶ Updated weekly from reports to the Influenza Division, National Center for Immunization and Respiratory Diseases. There are no reports of confirmed influenza-associated pediatric deaths for the current 2008-09 season.
 *** The one measles case reported for the current week was indigenous.
 ††† Data for meningococcal disease (all serogroups) are available in Table II.
 §§§ In 2008, Q fever acute and chronic reporting categories were recognized as a result of revisions to the Q fever case definition. Prior to that time, case counts were not differentiated with respect to acute and chronic Q fever cases.
 ¶¶¶ No rubella cases were reported for the current week.
 **** Updated weekly from reports to the Division of Viral and Rickettsial Diseases, National Center for Zoonotic, Vector-Borne, and Enteric Diseases.

FIGURE I. Selected notifiable disease reports, United States, comparison of provisional 4-week totals November 8, 2008, with historical data



* Ratio of current 4-week total to mean of 15 4-week totals (from previous, comparable, and subsequent 4-week periods for the past 5 years). The point where the hatched area begins is based on the mean and two standard deviations of these 4-week totals.

Notifiable Disease Data Team and 122 Cities Mortality Data Team
 Patsy A. Hall
 Deborah A. Adams Rosaline Dhara
 Willie J. Anderson Michael S. Wodajo
 Lenee Blanton Pearl C. Sharp

TABLE II. Provisional cases of selected notifiable diseases, United States, weeks ending November 8, 2008, and November 10, 2007 (45th week)*

Reporting area	Chlamydia†					Coccidioidomycosis					Cryptosporidiosis				
	Current week	Previous 52 weeks		Cum 2008	Cum 2007	Current week	Previous 52 weeks		Cum 2008	Cum 2007	Current week	Previous 52 week		Cum 2008	Cum 2007
		Med	Max				Med	Max				Med	Max		
United States	8,748	21,172	28,892	923,486	950,910	240	121	341	5,635	6,577	57	102	426	6,356	10,272
New England	688	706	1,516	31,808	30,311	—	0	1	1	2	1	5	39	281	306
Connecticut	—	221	1,093	9,786	9,064	N	0	0	N	N	—	0	37	37	42
Maine§	47	50	72	2,230	2,208	N	0	0	N	N	—	1	6	41	46
Massachusetts	485	325	660	14,997	13,578	N	0	0	N	N	—	1	9	91	123
New Hampshire	37	40	64	1,838	1,805	—	0	1	1	2	1	1	4	52	46
Rhode Island§	88	54	102	2,298	2,738	—	0	0	—	—	—	0	2	7	10
Vermont§	31	15	52	659	918	N	0	0	N	N	—	1	7	53	39
Mid. Atlantic	1,403	2,717	4,921	122,875	124,220	—	0	0	—	—	2	13	34	636	1,289
New Jersey	—	413	520	15,469	18,671	N	0	0	N	N	—	1	2	25	63
New York (Upstate)	493	561	2,177	23,469	23,482	N	0	0	N	N	1	4	17	239	224
New York City	620	975	3,001	47,787	44,842	N	0	0	N	N	—	2	6	94	90
Pennsylvania	290	823	1,025	36,150	37,225	N	0	0	N	N	1	5	15	278	912
E.N. Central	664	3,487	4,373	150,437	155,331	—	1	3	38	31	11	25	122	1,774	1,737
Illinois	5	1,065	1,711	43,250	46,122	N	0	0	N	N	—	2	7	101	187
Indiana	246	377	656	17,665	18,352	N	0	0	N	N	2	3	41	170	89
Michigan	397	827	1,226	38,215	32,326	—	0	3	29	21	—	5	13	228	178
Ohio	16	846	1,261	36,958	41,309	—	0	1	9	10	9	6	59	644	532
Wisconsin	—	334	612	14,349	17,222	N	0	0	N	N	—	8	46	631	751
W.N. Central	644	1,258	1,700	56,043	54,936	—	0	77	2	7	12	16	71	868	1,495
Iowa	—	166	240	7,598	7,615	N	0	0	N	N	2	4	30	259	593
Kansas	236	178	529	8,031	7,003	N	0	0	N	N	—	1	8	72	135
Minnesota	—	264	373	11,447	11,776	—	0	77	—	—	6	5	15	206	256
Missouri	408	477	566	21,211	20,314	—	0	1	2	7	1	3	13	151	165
Nebraska§	—	92	252	3,914	4,499	N	0	0	N	N	3	2	8	105	158
North Dakota	—	33	65	1,441	1,495	N	0	0	N	N	—	0	51	7	23
South Dakota	—	54	85	2,401	2,234	N	0	0	N	N	—	1	9	68	165
S. Atlantic	1,588	3,719	7,609	162,305	186,623	—	0	1	4	5	18	18	46	849	1,133
Delaware	58	69	150	3,218	2,984	—	0	1	1	—	—	0	2	10	20
District of Columbia	—	131	216	5,804	5,186	—	0	1	—	2	—	0	2	8	3
Florida	1,161	1,359	1,569	60,302	49,962	N	0	0	N	N	9	8	35	413	598
Georgia	1	330	1,338	15,557	37,305	N	0	0	N	N	5	4	13	197	210
Maryland§	342	451	699	19,841	19,359	—	0	1	3	3	1	0	4	32	33
North Carolina	—	5	4,783	5,901	24,299	N	0	0	N	N	1	0	16	61	101
South Carolina§	26	465	3,047	22,920	23,084	N	0	0	N	N	—	1	4	42	81
Virginia§	—	612	1,059	26,255	21,662	N	0	0	N	N	2	1	4	67	76
West Virginia	—	57	96	2,507	2,782	N	0	0	N	N	—	0	3	19	11
E.S. Central	587	1,565	2,394	70,060	72,281	—	0	0	—	—	—	3	9	144	580
Alabama§	—	461	589	18,558	22,091	N	0	0	N	N	—	1	6	60	110
Kentucky	—	234	370	10,252	7,245	N	0	0	N	N	—	0	4	30	244
Mississippi	—	364	1,048	16,976	19,004	N	0	0	N	N	—	0	2	16	98
Tennessee§	587	528	791	24,274	23,941	N	0	0	N	N	—	1	6	38	128
W.S. Central	512	2,732	4,426	120,332	108,353	—	0	1	3	2	2	5	130	969	405
Arkansas§	348	274	455	12,502	8,702	N	0	0	N	N	1	0	6	37	56
Louisiana	164	354	774	16,601	17,274	—	0	1	3	2	—	1	5	48	56
Oklahoma	—	195	392	7,668	11,108	N	0	0	N	N	1	1	16	120	112
Texas§	—	1,900	3,923	83,561	71,269	N	0	0	N	N	—	2	117	764	181
Mountain	430	1,183	1,811	50,831	64,133	94	87	170	3,731	4,071	1	9	37	476	2,842
Arizona	292	430	650	16,967	21,711	94	86	168	3,658	3,930	—	1	9	83	46
Colorado	—	185	488	8,136	14,977	N	0	0	N	N	—	1	12	102	202
Idaho§	3	61	314	3,185	3,203	N	0	0	N	N	1	1	14	60	440
Montana§	—	58	363	2,414	2,248	N	0	0	N	N	—	1	6	39	61
Nevada§	135	181	416	8,177	8,406	—	1	6	41	60	—	0	2	1	36
New Mexico§	—	137	561	5,859	7,880	—	0	3	26	20	—	1	23	143	116
Utah	—	118	253	4,803	4,665	—	0	3	4	58	—	0	6	31	1,888
Wyoming§	—	30	58	1,290	1,043	—	0	1	2	3	—	0	4	17	53
Pacific	2,232	3,692	4,676	158,795	154,722	146	31	217	1,856	2,459	10	9	29	359	485
Alaska	96	88	129	3,865	4,241	N	0	0	N	N	—	0	1	3	3
California	1,869	2,873	4,115	125,324	120,816	146	31	217	1,856	2,459	6	5	14	217	255
Hawaii	—	103	152	4,389	4,940	N	0	0	N	N	—	0	1	2	6
Oregon§	—	188	402	8,392	8,374	N	0	0	N	N	2	1	4	49	121
Washington	267	372	634	16,825	16,351	N	0	0	N	N	2	2	16	88	100
American Samoa	—	0	20	73	95	N	0	0	N	N	N	0	0	N	N
C.N.M.I.	—	—	—	—	—	—	—	—	—	—	—	—	—	—	—
Guam	—	5	24	115	735	—	0	0	—	—	—	0	0	—	—
Puerto Rico	76	121	612	6,138	6,460	N	0	0	N	N	N	0	0	N	N
U.S. Virgin Islands	—	12	23	502	146	—	0	0	—	—	—	0	0	—	—

C.N.M.I.: Commonwealth of Northern Mariana Islands.

U: Unavailable. —: No reported cases. N: Not notifiable. Cum: Cumulative year-to-date counts. Med: Median. Max: Maximum.

* Incidence data for reporting year 2008 are provisional. Data for HIV/AIDS, AIDS, and TB, when available, are displayed in Table IV, which appears quarterly.

† Chlamydia refers to genital infections caused by *Chlamydia trachomatis*.

§ Contains data reported through the National Electronic Disease Surveillance System (NEDSS).

TABLE II. (Continued) Provisional cases of selected notifiable diseases, United States, weeks ending November 8, 2008, and November 10, 2007 (45th week)*

Reporting area	Giardiasis					Gonorrhea					Haemophilus influenzae, invasive All ages, all serotypes†				
	Current week	Previous 52 weeks		Cum 2008	Cum 2007	Current week	Previous 52 weeks		Cum 2008	Cum 2007	Current week	Previous 52 weeks		Cum 2008	Cum 2007
		Med	Max				Med	Max				Med	Max		
United States	252	309	1,158	14,696	15,947	1,961	5,878	8,913	256,099	306,441	21	48	173	2,180	2,075
New England	5	24	49	1,132	1,308	63	103	227	4,543	4,757	—	3	12	127	159
Connecticut	1	6	11	278	324	—	53	199	2,232	1,836	—	0	9	34	43
Maine§	3	3	12	158	174	1	2	6	81	109	—	0	1	13	12
Massachusetts	—	9	17	343	547	56	38	127	1,841	2,268	—	1	5	57	77
New Hampshire	—	2	11	132	31	2	2	6	88	131	—	0	1	9	16
Rhode Island§	—	1	8	76	77	4	6	13	277	359	—	0	1	6	8
Vermont§	1	2	13	145	155	—	0	5	24	54	—	0	3	8	3
Mid. Atlantic	43	60	131	2,740	2,787	297	625	1,028	27,674	31,639	3	10	31	418	396
New Jersey	—	8	14	300	359	—	105	168	3,971	5,260	—	1	7	61	61
New York (Upstate)	23	23	111	1,022	1,013	119	124	545	5,233	5,891	2	3	22	128	113
New York City	4	16	27	692	752	136	175	518	8,877	9,286	—	1	6	73	87
Pennsylvania	16	15	45	726	663	42	220	394	9,593	11,202	1	4	8	156	135
E.N. Central	25	46	78	2,134	2,532	228	1,241	1,647	53,610	63,259	3	8	28	325	320
Illinois	—	10	22	469	795	2	370	589	15,034	17,356	—	2	7	101	99
Indiana	N	0	0	N	N	85	150	284	7,110	7,907	—	1	20	65	53
Michigan	3	11	21	489	543	138	329	657	14,426	13,395	—	0	3	17	26
Ohio	21	16	31	780	713	3	305	531	13,159	18,615	3	2	6	118	91
Wisconsin	1	9	23	396	481	—	98	175	3,881	5,986	—	1	2	24	51
W.N. Central	9	27	621	1,707	1,168	171	320	425	14,230	17,089	3	3	24	169	124
Iowa	2	6	17	282	270	—	28	48	1,289	1,700	—	0	1	2	1
Kansas	—	3	11	140	166	71	41	130	1,998	1,999	—	0	3	11	11
Minnesota	—	0	575	590	7	—	58	92	2,517	3,027	—	0	21	54	56
Missouri	6	8	22	400	471	100	149	203	6,938	8,757	3	1	6	65	37
Nebraska§	1	4	10	179	143	—	25	47	1,121	1,274	—	0	2	25	15
North Dakota	—	0	36	19	19	—	2	6	87	108	—	0	3	12	4
South Dakota	—	1	10	97	92	—	6	15	280	224	—	0	0	—	—
S. Atlantic	62	55	87	2,411	2,674	492	1,201	3,072	54,667	71,865	10	11	29	584	523
Delaware	—	1	3	34	39	10	20	44	908	1,128	—	0	2	6	8
District of Columbia	—	1	5	51	68	—	48	104	2,197	2,060	—	0	1	9	3
Florida	28	22	52	1,106	1,118	383	451	549	20,046	20,323	3	3	10	156	140
Georgia	18	10	27	511	596	—	105	560	5,983	15,357	4	2	9	132	106
Maryland§	2	5	12	214	242	86	118	206	5,346	5,763	—	2	6	81	76
North Carolina	N	0	0	N	N	—	3	1,949	2,638	12,026	2	1	9	65	51
South Carolina§	3	2	6	106	105	13	189	832	8,250	8,924	—	1	7	44	44
Virginia§	11	8	39	338	460	—	173	486	8,708	5,451	1	1	6	73	70
West Virginia	—	1	5	51	46	—	14	26	591	833	—	0	3	18	25
E.S. Central	12	9	21	414	496	154	559	945	25,096	28,107	1	3	8	111	119
Alabama§	2	5	12	231	232	—	181	287	7,345	9,450	—	0	2	17	25
Kentucky	N	0	0	N	N	—	90	153	3,917	2,859	—	0	1	2	8
Mississippi	N	0	0	N	N	—	131	401	6,098	7,254	—	0	2	13	9
Tennessee§	10	4	13	183	264	154	164	296	7,736	8,544	1	2	6	79	77
W.S. Central	6	7	41	365	385	197	952	1,355	41,058	44,999	—	2	29	94	89
Arkansas§	1	3	8	123	141	135	86	167	4,062	3,708	—	0	3	8	9
Louisiana	—	2	9	106	125	62	159	317	7,156	9,883	—	0	2	7	8
Oklahoma	5	3	35	136	119	—	67	124	2,903	4,304	—	1	21	71	62
Texas§	N	0	0	N	N	—	636	1,102	26,937	27,104	—	0	3	8	10
Mountain	9	28	60	1,259	1,590	66	206	337	8,788	12,076	1	5	14	241	219
Arizona	1	3	7	117	177	44	63	111	2,442	4,454	1	2	11	100	78
Colorado	—	11	27	483	507	—	58	100	2,602	2,933	—	1	4	47	53
Idaho§	3	4	19	173	161	1	3	13	137	238	—	0	4	12	6
Montana§	—	1	9	74	99	—	2	48	95	61	—	0	1	2	2
Nevada§	5	1	6	79	124	21	42	130	1,892	2,079	—	0	2	14	10
New Mexico§	—	2	7	76	106	—	24	104	1,094	1,565	—	0	4	31	37
Utah	—	5	22	235	376	—	11	36	418	679	—	0	6	32	28
Wyoming§	—	0	3	22	40	—	2	9	108	67	—	0	2	3	5
Pacific	81	54	185	2,534	3,007	293	612	746	26,433	32,650	—	2	7	111	126
Alaska	2	1	10	89	68	9	10	24	441	490	—	0	2	16	14
California	51	35	91	1,643	2,017	257	514	657	21,941	27,251	—	0	3	25	45
Hawaii	—	0	5	36	70	—	11	22	479	574	—	0	2	17	11
Oregon§	5	8	18	399	409	—	23	53	1,045	1,072	—	1	4	50	54
Washington	23	8	87	367	443	27	56	90	2,527	3,263	—	0	3	3	2
American Samoa	—	0	0	—	—	—	0	1	3	3	—	0	0	—	—
C.N.M.I.	—	—	—	—	—	—	—	—	—	—	—	—	—	—	—
Guam	—	0	0	—	2	—	1	15	72	114	—	0	1	—	—
Puerto Rico	—	2	10	111	354	8	5	25	245	281	—	0	0	—	2
U.S. Virgin Islands	—	0	0	—	—	—	2	6	93	37	N	0	0	N	N

C.N.M.I.: Commonwealth of Northern Mariana Islands.

U: Unavailable. —: No reported cases. N: Not notifiable. Cum: Cumulative year-to-date counts. Med: Median. Max: Maximum.

* Incidence data for reporting year 2008 are provisional.

† Data for *H. influenzae* (age <5 yrs for serotype b, nonserotype b, and unknown serotype) are available in Table I.

§ Contains data reported through the National Electronic Disease Surveillance System (NEDSS).

TABLE II. (Continued) Provisional cases of selected notifiable diseases, United States, weeks ending November 8, 2008, and November 10, 2007 (45th week)*

Reporting area	Hepatitis (viral, acute), by type†										Legionellosis				
	A				B										
	Current week	Previous 52 weeks		Cum 2008	Cum 2007	Current week	Previous 52 weeks		Cum 2008	Cum 2007	Current week	Previous 52 weeks		Cum 2008	Cum 2007
	Med	Max				Med	Max				Med	Max			
United States	20	47	171	2,113	2,513	33	68	259	2,939	3,763	22	50	138	2,374	2,276
New England	—	2	7	96	121	—	1	7	50	108	—	2	16	117	135
Connecticut	—	0	4	26	25	—	0	7	19	35	—	0	5	37	36
Maine§	—	0	2	6	3	—	0	2	10	12	—	0	2	8	6
Massachusetts	—	1	5	38	61	—	0	1	9	40	—	0	3	13	38
New Hampshire	—	0	2	12	12	—	0	1	6	4	—	0	5	24	8
Rhode Island§	—	0	2	12	12	—	0	2	4	13	—	0	14	30	38
Vermont§	—	0	1	2	8	—	0	1	2	4	—	0	1	5	9
Mid. Atlantic	2	6	12	248	407	4	9	15	364	488	9	15	58	807	732
New Jersey	—	1	4	42	116	—	3	7	102	137	—	1	8	62	104
New York (Upstate)	—	1	6	57	66	2	1	4	57	80	6	5	19	294	198
New York City	—	2	6	91	144	—	2	6	77	107	—	2	12	98	167
Pennsylvania	2	1	6	58	81	2	3	7	128	164	3	6	33	353	263
E.N. Central	4	6	16	279	301	3	7	12	336	399	4	10	38	513	522
Illinois	—	1	10	85	107	—	1	5	78	122	—	1	7	66	104
Indiana	—	0	4	21	27	2	0	6	40	47	1	1	7	43	51
Michigan	1	2	7	102	81	—	2	6	109	100	—	2	16	140	151
Ohio	3	1	4	45	57	1	2	8	103	110	3	5	18	247	185
Wisconsin	—	0	2	26	29	—	0	1	6	20	—	0	3	17	31
W.N. Central	1	5	29	233	152	—	2	9	83	100	1	2	9	108	103
Iowa	—	1	7	104	43	—	0	2	13	23	—	0	2	13	11
Kansas	—	0	3	12	7	—	0	3	6	8	—	0	1	2	9
Minnesota	—	0	23	36	62	—	0	5	10	17	1	0	4	19	23
Missouri	1	1	3	38	19	—	1	4	48	34	—	1	5	53	43
Nebraska§	—	0	5	39	15	—	0	1	5	11	—	0	4	19	13
North Dakota	—	0	2	—	—	—	0	1	1	—	—	0	2	—	—
South Dakota	—	0	1	4	6	—	0	0	—	7	—	0	1	2	4
S. Atlantic	4	7	15	340	429	9	16	60	750	876	7	9	28	397	374
Delaware	—	0	1	7	7	—	0	3	7	14	—	0	2	11	11
District of Columbia	U	0	0	U	U	U	0	0	U	U	—	0	1	13	14
Florida	1	3	8	136	134	2	6	12	291	299	3	3	7	129	130
Georgia	1	1	4	43	61	3	3	6	123	134	1	0	4	27	35
Maryland§	1	1	3	34	69	—	2	4	70	102	1	2	10	104	70
North Carolina	—	0	9	57	56	—	0	17	73	120	1	0	7	33	39
South Carolina§	—	0	3	15	15	—	1	6	52	55	—	0	2	11	17
Virginia§	1	1	5	43	78	4	2	16	88	113	1	1	6	49	46
West Virginia	—	0	2	5	9	—	1	30	46	39	—	0	3	20	12
E.S. Central	—	1	9	72	94	2	7	13	313	336	—	2	10	97	88
Alabama§	—	0	4	12	18	—	2	6	89	117	—	0	2	13	9
Kentucky	—	0	3	27	19	1	2	5	76	67	—	1	4	48	44
Mississippi	—	0	2	4	8	—	0	3	36	36	—	0	1	1	—
Tennessee§	—	0	6	29	49	1	3	8	112	116	—	1	5	35	35
W.S. Central	—	5	55	183	228	9	14	131	544	814	—	1	23	69	113
Arkansas§	—	0	1	5	12	—	0	4	30	66	—	0	2	11	14
Louisiana	—	0	1	10	27	—	2	4	70	87	—	0	2	8	4
Oklahoma	—	0	3	7	10	4	2	22	96	119	—	0	6	10	5
Texas§	—	4	53	161	179	5	8	107	348	542	—	1	18	40	90
Mountain	3	4	9	168	205	—	4	10	172	185	—	2	4	65	98
Arizona	3	2	8	76	137	—	1	5	59	73	—	0	2	16	36
Colorado	—	1	3	35	24	—	0	3	30	33	—	0	2	10	21
Idaho§	—	0	3	18	4	—	0	2	9	12	—	0	1	3	5
Montana§	—	0	1	1	9	—	0	1	2	—	—	0	1	4	3
Nevada§	—	0	3	8	11	—	1	3	32	42	—	0	1	8	8
New Mexico§	—	0	3	16	11	—	0	2	9	12	—	0	1	6	9
Utah	—	0	2	11	6	—	0	5	27	9	—	0	2	18	13
Wyoming§	—	0	1	3	3	—	0	1	4	4	—	0	0	—	3
Pacific	6	11	51	494	576	6	8	30	327	457	1	4	18	201	111
Alaska	—	0	1	3	4	—	0	2	9	7	—	0	1	1	—
California	5	9	42	404	496	5	5	19	230	338	1	3	14	160	82
Hawaii	—	0	2	16	6	—	0	2	6	14	—	0	1	8	2
Oregon§	—	0	3	25	26	—	1	3	40	51	—	0	2	15	10
Washington	1	1	7	46	44	1	1	9	42	47	—	0	3	17	17
American Samoa	—	0	0	—	—	—	0	0	—	14	N	0	0	N	N
C.N.M.I.	—	—	—	—	—	—	—	—	—	—	—	—	—	—	—
Guam	—	0	0	—	—	—	0	1	—	2	—	0	0	—	—
Puerto Rico	—	0	4	16	56	—	1	5	37	79	—	0	1	1	4
U.S. Virgin Islands	—	0	0	—	—	—	0	0	—	—	—	0	0	—	—

C.N.M.I.: Commonwealth of Northern Mariana Islands.

U: Unavailable. —: No reported cases. N: Not notifiable. Cum: Cumulative year-to-date counts. Med: Median. Max: Maximum.

* Incidence data for reporting year 2008 are provisional.

† Data for acute hepatitis C, viral are available in Table I.

§ Contains data reported through the National Electronic Disease Surveillance System (NEDSS).

TABLE II. (Continued) Provisional cases of selected notifiable diseases, United States, weeks ending November 8, 2008, and November 10, 2007 (45th week)*

Reporting area	Lyme disease					Malaria					Meningococcal disease, invasive† All serotypes				
	Current week	Previous 52 weeks		Cum 2008	Cum 2007	Current week	Previous 52 weeks		Cum 2008	Cum 2007	Current week	Previous 52 weeks		Cum 2008	Cum 2007
		Med	Max				Med	Max				Med	Max		
United States	236	376	1,414	22,362	24,396	10	22	136	917	1,125	11	18	53	917	933
New England	37	52	252	3,308	7,436	—	1	35	33	53	—	0	3	21	41
Connecticut	—	0	35	—	2,932	—	0	27	11	2	—	0	1	1	6
Maine§	34	2	75	770	447	—	0	1	—	7	—	0	1	5	7
Massachusetts	—	13	114	1,039	2,906	—	0	2	14	31	—	0	3	15	19
New Hampshire	—	8	133	1,194	860	—	0	1	4	9	—	0	0	—	3
Rhode Island§	—	0	12	—	163	—	0	8	—	—	—	0	1	—	3
Vermont§	3	2	39	305	128	—	0	1	4	4	—	0	1	—	3
Mid. Atlantic	141	168	1,000	12,974	10,025	—	4	14	210	344	1	2	6	105	118
New Jersey	—	32	188	2,301	2,919	—	0	2	—	64	—	0	2	10	17
New York (Upstate)	109	53	453	4,408	2,961	—	1	8	28	57	1	0	3	26	34
New York City	—	0	7	26	394	—	3	10	148	184	—	0	2	25	20
Pennsylvania	32	55	528	6,239	3,751	—	1	3	34	39	—	1	5	44	47
E.N. Central	1	9	122	1,030	2,042	—	2	7	112	119	4	3	9	153	146
Illinois	—	0	9	75	149	—	1	6	48	53	—	1	4	53	55
Indiana	—	0	8	35	44	—	0	2	5	9	—	0	4	23	24
Michigan	—	1	12	90	51	—	0	2	14	18	1	0	3	27	24
Ohio	1	0	5	42	31	—	0	3	28	22	3	1	4	36	32
Wisconsin	—	7	108	788	1,767	—	0	3	17	17	—	0	2	14	11
W.N. Central	7	8	740	1,133	517	1	1	9	59	38	1	2	8	84	61
Iowa	—	1	8	82	119	—	0	1	5	3	—	0	3	16	14
Kansas	—	0	1	5	8	—	0	2	9	3	—	0	1	4	4
Minnesota	7	2	731	989	372	1	0	8	24	16	—	0	7	22	18
Missouri	—	0	4	41	9	—	0	4	13	7	1	0	3	25	15
Nebraska§	—	0	2	12	6	—	0	2	8	7	—	0	1	12	5
North Dakota	—	0	9	1	3	—	0	2	—	1	—	0	1	3	2
South Dakota	—	0	1	3	—	—	0	0	—	1	—	0	1	2	3
S. Atlantic	38	66	177	3,505	4,131	4	4	15	237	233	—	3	10	139	154
Delaware	—	12	37	671	654	—	0	1	2	4	—	0	1	2	1
District of Columbia	—	3	11	147	115	—	0	2	4	2	—	0	0	—	—
Florida	6	1	10	96	24	—	1	7	49	50	—	1	3	48	59
Georgia	—	0	3	21	10	—	1	5	47	37	—	0	2	16	22
Maryland§	16	30	136	1,739	2,386	2	1	6	60	62	—	0	4	16	19
North Carolina	3	0	7	39	42	2	0	7	26	20	—	0	4	12	18
South Carolina§	—	0	3	21	28	—	0	1	9	6	—	0	3	19	16
Virginia§	13	12	68	709	805	—	1	7	40	51	—	0	2	21	17
West Virginia	—	0	11	62	67	—	0	0	—	1	—	0	1	5	2
E.S. Central	—	1	3	41	50	1	0	2	17	33	1	1	6	47	45
Alabama§	—	0	3	10	13	—	0	1	4	6	—	0	2	8	8
Kentucky	—	0	1	3	5	—	0	1	4	8	—	0	2	8	10
Mississippi	—	0	1	1	1	—	0	1	1	2	—	0	2	11	10
Tennessee§	—	0	3	27	31	1	0	2	8	17	1	0	3	20	17
W.S. Central	3	2	11	95	70	—	1	64	72	83	2	2	13	96	93
Arkansas§	—	0	0	—	1	—	0	0	—	2	—	0	2	7	9
Louisiana	—	0	1	3	2	—	0	1	3	14	—	0	3	21	25
Oklahoma	—	0	1	—	—	—	0	4	2	5	1	0	5	14	16
Texas§	3	2	10	92	67	—	1	60	67	62	1	1	7	54	43
Mountain	—	0	4	40	42	—	1	3	29	61	—	1	4	49	58
Arizona	—	0	2	7	2	—	0	2	14	12	—	0	2	10	12
Colorado	—	0	2	7	—	—	0	1	4	23	—	0	1	12	21
Idaho§	—	0	2	10	9	—	0	1	3	4	—	0	2	4	4
Montana§	—	0	1	4	4	—	0	0	—	3	—	0	1	5	2
Nevada§	—	0	2	4	12	—	0	3	3	3	—	0	1	4	4
New Mexico§	—	0	2	6	5	—	0	1	2	5	—	0	1	7	2
Utah	—	0	0	—	7	—	0	1	3	11	—	0	1	5	11
Wyoming§	—	0	1	2	3	—	0	0	—	—	—	0	1	2	2
Pacific	9	5	10	236	83	4	3	10	148	161	2	4	18	223	217
Alaska	—	0	2	5	8	1	0	2	6	2	—	0	2	4	1
California	8	3	10	178	66	3	2	8	110	116	1	3	18	158	159
Hawaii	N	0	0	N	N	—	0	1	3	2	—	0	2	4	8
Oregon§	1	0	5	43	6	—	0	2	4	16	1	1	3	33	28
Washington	—	0	7	10	3	—	0	3	25	25	—	0	5	24	21
American Samoa	N	0	0	N	N	—	0	0	—	—	—	0	0	—	—
C.N.M.I.	—	—	—	—	—	—	—	—	—	—	—	—	—	—	—
Guam	—	0	0	—	—	—	0	2	3	1	—	0	0	—	—
Puerto Rico	N	0	0	N	N	—	0	1	3	1	—	0	1	3	7
U.S. Virgin Islands	N	0	0	N	N	—	0	0	—	—	—	0	0	—	—

C.N.M.I.: Commonwealth of Northern Mariana Islands.

U: Unavailable. —: No reported cases. N: Not notifiable. Cum: Cumulative year-to-date counts. Med: Median. Max: Maximum.

* Incidence data for reporting year 2008 are provisional.

† Data for meningococcal disease, invasive caused by serogroups A, C, Y, & W-135; serogroup B; other serogroup; and unknown serogroup are available in Table I.

§ Contains data reported through the National Electronic Disease Surveillance System (NEDSS).

TABLE II. (Continued) Provisional cases of selected notifiable diseases, United States, weeks ending November 8, 2008, and November 10, 2007 (45th week)*

Reporting area	Pertussis					Rabies, animal					Rocky Mountain spotted fever				
	Current week	Previous 52 weeks		Cum 2008	Cum 2007	Current week	Previous 52 weeks		Cum 2008	Cum 2007	Current week	Previous 52 weeks		Cum 2008	Cum 2007
		Med	Max				Med	Max				Med	Max		
United States	150	155	849	7,265	8,442	45	94	147	4,148	5,453	47	33	195	2,028	1,849
New England	—	14	49	559	1,320	11	7	20	328	485	—	0	1	2	8
Connecticut	—	0	4	34	78	8	3	17	183	205	—	0	0	—	—
Maine†	—	1	5	33	74	1	1	5	50	79	N	0	0	N	N
Massachusetts	—	11	33	420	1,024	N	0	0	N	N	—	0	1	1	7
New Hampshire	—	0	4	31	73	—	1	3	35	49	—	0	1	1	1
Rhode Island†	—	0	25	29	22	N	0	0	N	N	—	0	0	—	—
Vermont†	—	0	6	12	49	2	1	6	60	152	—	0	0	—	—
Mid. Atlantic	27	19	43	811	1,111	12	22	50	1,173	905	2	1	5	65	72
New Jersey	—	0	9	4	198	—	0	0	—	—	—	0	2	2	27
New York (Upstate)	8	7	24	382	490	12	9	20	455	474	—	0	2	16	6
New York City	—	1	6	46	126	—	0	2	13	42	—	0	2	23	24
Pennsylvania	19	8	23	379	297	—	14	35	705	389	2	0	2	24	15
E.N. Central	29	22	189	1,215	1,387	2	3	28	240	399	1	1	13	126	57
Illinois	—	4	18	211	169	—	1	21	103	112	—	1	10	84	37
Indiana	—	1	15	87	53	—	0	2	10	12	—	0	3	7	5
Michigan	3	5	14	222	266	2	1	8	70	199	—	0	1	3	4
Ohio	26	8	176	631	588	—	1	7	57	76	1	0	4	31	10
Wisconsin	—	1	7	64	311	N	0	0	N	N	—	0	1	1	1
W.N. Central	43	14	142	759	595	8	3	12	172	243	1	5	36	482	354
Iowa	—	1	9	68	135	—	0	5	27	30	—	0	2	6	15
Kansas	—	1	10	44	95	—	0	7	—	99	—	0	0	—	12
Minnesota	—	2	131	200	157	7	0	10	61	32	—	0	4	—	1
Missouri	19	4	20	274	82	1	0	9	48	38	—	4	35	453	307
Nebraska†	24	2	21	157	62	—	0	0	—	—	1	0	4	20	14
North Dakota	—	0	5	1	7	—	0	8	24	21	—	0	0	—	—
South Dakota	—	0	3	15	57	—	0	2	12	23	—	0	1	3	5
S. Atlantic	8	15	50	737	843	8	37	101	1,806	1,992	30	12	70	785	867
Delaware	—	0	3	15	11	—	0	0	—	—	—	0	4	26	16
District of Columbia	—	0	1	5	9	—	0	0	—	—	—	0	2	7	3
Florida	4	4	20	248	194	—	0	77	124	128	1	0	3	17	15
Georgia	—	1	6	59	33	—	6	42	288	268	—	1	8	67	56
Maryland†	3	2	9	102	105	—	8	17	382	387	—	1	7	60	59
North Carolina	—	0	38	79	282	8	9	16	412	442	28	1	55	414	545
South Carolina†	1	2	22	96	69	—	0	0	—	46	—	1	8	49	61
Virginia†	—	3	10	127	111	—	12	24	527	646	1	2	15	139	107
West Virginia	—	0	2	6	29	—	1	11	73	75	—	0	1	6	5
E.S. Central	3	6	13	270	428	—	2	7	93	144	—	3	22	280	268
Alabama†	1	1	5	42	85	—	0	0	—	—	—	1	8	83	92
Kentucky	—	1	8	79	27	—	0	4	43	18	—	0	1	1	5
Mississippi	—	2	7	82	241	—	0	1	2	2	—	0	3	6	20
Tennessee†	2	1	6	67	75	—	0	6	48	124	—	2	18	190	151
W.S. Central	15	24	198	1,238	937	—	1	40	85	974	12	2	153	252	186
Arkansas†	—	1	11	48	157	—	1	6	47	28	—	0	14	50	99
Louisiana	—	1	7	67	20	—	0	0	—	6	—	0	1	5	4
Oklahoma	—	0	26	32	6	—	0	32	36	45	12	0	132	158	47
Texas†	15	20	179	1,091	754	—	0	20	2	895	—	1	8	39	36
Mountain	1	15	37	661	967	—	1	8	71	88	1	0	3	32	34
Arizona	—	3	10	172	194	N	0	0	N	N	1	0	2	13	9
Colorado	—	3	13	131	261	—	0	0	—	—	—	0	1	1	3
Idaho†	1	0	5	28	37	—	0	1	—	11	—	0	1	1	4
Montana†	—	1	11	77	41	—	0	2	8	19	—	0	1	3	1
Nevada†	—	0	7	18	37	—	0	4	5	13	—	0	2	2	—
New Mexico†	—	0	5	31	70	—	0	3	24	11	—	0	1	2	5
Utah	—	5	27	188	304	—	0	6	13	16	—	0	0	—	—
Wyoming†	—	0	2	16	23	—	0	3	21	18	—	0	2	10	12
Pacific	24	21	303	1,015	854	4	4	13	180	223	—	0	1	4	3
Alaska	10	2	19	185	86	—	0	4	13	41	N	0	0	N	N
California	—	7	129	299	399	4	3	12	154	171	—	0	1	1	1
Hawaii	—	0	2	11	18	—	0	0	—	—	N	0	0	N	N
Oregon†	2	3	9	154	111	—	0	4	13	11	—	0	1	3	2
Washington	12	5	169	366	240	—	0	0	—	—	N	0	0	N	N
American Samoa	—	0	0	—	—	N	0	0	N	N	N	0	0	N	N
C.N.M.I.	—	—	—	—	—	—	—	—	—	—	—	—	—	—	—
Guam	—	0	0	—	—	—	0	0	—	—	N	0	0	N	N
Puerto Rico	—	0	0	—	—	—	1	5	56	47	N	0	0	N	N
U.S. Virgin Islands	—	0	0	—	—	N	0	0	N	N	N	0	0	N	N

C.N.M.I.: Commonwealth of Northern Mariana Islands.

U: Unavailable. —: No reported cases. N: Not notifiable. Cum: Cumulative year-to-date counts. Med: Median. Max: Maximum.

* Incidence data for reporting year 2008 are provisional.

† Contains data reported through the National Electronic Disease Surveillance System (NEDSS).

TABLE II. (Continued) Provisional cases of selected notifiable diseases, United States, weeks ending November 8, 2008, and November 10, 2007 (45th week)*

Reporting area	Salmonellosis					Shiga toxin-producing <i>E. coli</i> (STEC)†					Shigellosis				
	Current week	Previous 52 weeks		Cum 2008	Cum 2007	Current week	Previous 52 weeks		Cum 2008	Cum 2007	Current week	Previous 52 weeks		Cum 2008	Cum 2007
		Med	Max				Med	Max				Med	Max		
United States	645	796	2,110	37,991	40,993	51	84	248	4,368	4,306	350	402	1,227	16,579	15,756
New England	—	19	456	1,581	2,112	—	3	46	205	298	—	2	35	149	231
Connecticut	—	0	426	426	431	—	0	43	43	71	—	0	34	34	44
Maine§	—	2	8	129	125	—	0	3	21	39	—	0	6	21	14
Massachusetts	—	14	52	741	1,227	—	1	11	80	134	—	2	5	78	145
New Hampshire	—	2	10	121	155	—	0	3	30	34	—	0	1	3	5
Rhode Island§	—	1	8	92	100	—	0	3	8	7	—	0	1	10	20
Vermont§	—	1	7	72	74	—	0	3	23	13	—	0	1	3	3
Mid. Atlantic	45	87	164	4,372	5,418	1	7	192	554	473	8	37	95	1,868	693
New Jersey	—	13	30	488	1,130	—	1	4	25	106	—	8	37	568	155
New York (Upstate)	30	25	73	1,233	1,292	1	3	188	389	185	5	9	35	521	141
New York City	1	21	52	1,134	1,198	—	1	5	50	46	—	11	35	617	239
Pennsylvania	14	27	78	1,517	1,798	—	1	8	90	136	3	3	65	162	158
E.N. Central	34	87	178	4,143	5,358	4	10	58	715	673	59	70	145	3,154	2,507
Illinois	—	22	67	963	1,805	—	1	7	70	126	—	16	29	676	614
Indiana	10	9	53	543	609	—	1	14	82	91	6	11	83	555	123
Michigan	—	17	38	785	861	—	2	34	190	106	—	2	7	121	76
Ohio	24	25	65	1,151	1,190	3	3	17	180	149	53	24	76	1,427	1,086
Wisconsin	—	15	49	701	893	1	3	18	193	201	—	9	39	375	608
W.N. Central	21	48	126	2,439	2,544	8	12	57	731	715	7	17	39	775	1,690
Iowa	—	8	15	365	432	—	2	20	190	170	—	3	11	135	90
Kansas	—	6	25	384	372	—	0	7	43	50	—	0	5	47	24
Minnesota	7	13	70	648	607	5	3	21	185	210	1	5	25	276	219
Missouri	10	14	51	669	699	1	2	9	131	145	5	4	29	193	1,210
Nebraska§	4	4	13	207	244	2	1	28	139	86	1	0	3	10	24
North Dakota	—	0	35	42	41	—	0	20	3	8	—	0	15	37	3
South Dakota	—	2	11	124	149	—	1	4	40	46	—	0	9	77	120
S. Atlantic	288	263	456	10,464	10,569	11	13	50	702	608	55	57	149	2,638	4,021
Delaware	—	3	9	136	131	—	0	1	10	14	—	0	1	7	10
District of Columbia	—	1	4	46	52	—	0	1	11	—	—	0	3	13	17
Florida	143	102	174	4,460	4,171	6	2	18	136	129	8	16	75	717	2,018
Georgia	56	37	85	1,980	1,796	1	1	7	81	88	20	22	48	955	1,405
Maryland§	10	13	35	660	819	2	2	9	111	76	2	1	5	68	98
North Carolina	55	21	228	1,218	1,370	—	1	12	92	122	13	3	27	199	84
South Carolina§	11	21	55	946	1,006	—	0	4	37	12	7	9	32	483	167
Virginia§	13	20	49	876	1,049	2	3	25	195	149	5	4	13	180	162
West Virginia	—	3	25	142	175	—	0	3	29	18	—	0	61	16	60
E.S. Central	25	56	135	2,996	3,076	3	5	21	252	296	25	39	170	1,663	2,481
Alabama§	9	15	47	819	848	—	1	17	56	62	1	8	27	350	645
Kentucky	8	9	18	418	514	3	1	7	91	113	2	5	24	244	441
Mississippi	—	13	57	961	967	—	0	2	5	6	—	6	102	287	1,135
Tennessee§	8	17	54	798	747	—	2	7	100	115	22	16	41	782	260
W.S. Central	69	89	894	4,464	4,486	—	5	25	215	231	124	86	748	3,828	1,920
Arkansas§	5	12	40	697	750	—	1	3	40	42	4	9	27	497	78
Louisiana	—	17	49	865	887	—	0	1	2	10	—	10	25	523	460
Oklahoma	11	17	72	729	565	—	0	19	45	16	4	3	32	154	118
Texas§	53	35	794	2,173	2,284	—	3	11	128	163	116	58	702	2,654	1,264
Mountain	22	56	109	2,723	2,414	5	9	36	513	544	26	18	52	969	846
Arizona	13	19	45	952	871	1	1	5	63	101	20	9	34	507	481
Colorado	—	11	43	607	512	—	3	17	182	149	—	2	9	110	106
Idaho§	5	3	14	162	126	4	2	15	130	123	—	0	2	13	12
Montana§	—	2	10	100	92	—	0	3	30	—	—	0	1	6	23
Nevada§	3	3	10	156	236	—	0	3	9	28	4	4	13	208	61
New Mexico§	—	6	32	446	258	—	1	6	46	38	2	1	9	90	97
Utah	—	5	17	260	256	—	1	6	49	89	—	1	4	30	34
Wyoming§	1	1	5	40	63	—	0	2	4	16	—	0	1	5	32
Pacific	141	111	399	4,809	5,016	19	8	50	481	468	46	30	83	1,535	1,367
Alaska	3	1	4	48	82	—	0	1	7	4	1	0	1	2	8
California	104	78	286	3,491	3,811	8	5	39	251	237	42	27	74	1,316	1,093
Hawaii	1	5	15	228	259	—	0	5	13	29	—	1	3	39	65
Oregon§	1	6	20	370	289	—	1	8	61	72	—	2	10	86	71
Washington	32	13	103	672	575	11	2	16	149	126	3	2	13	92	130
American Samoa	—	0	1	2	—	—	0	0	—	—	—	0	1	1	5
C.N.M.I.	—	—	—	—	—	—	—	—	—	—	—	—	—	—	—
Guam	—	0	2	13	15	—	0	0	—	—	—	0	3	14	16
Puerto Rico	3	10	41	426	819	—	0	1	2	1	—	0	4	16	24
U.S. Virgin Islands	—	0	0	—	—	—	0	0	—	—	—	0	0	—	—

C.N.M.I.: Commonwealth of Northern Mariana Islands.

U: Unavailable. —: No reported cases. N: Not notifiable. Cum: Cumulative year-to-date counts. Med: Median. Max: Maximum.

* Incidence data for reporting year 2008 are provisional.

† Includes *E. coli* O157:H7; Shiga toxin-positive, serogroup non-O157; and Shiga toxin-positive, not serogrouped.

§ Contains data reported through the National Electronic Disease Surveillance System (NEDSS).

TABLE II. (Continued) Provisional cases of selected notifiable diseases, United States, weeks ending November 8, 2008, and November 10, 2007 (45th week)*

Reporting area	Streptococcal diseases, invasive, group A					<i>Streptococcus pneumoniae</i> , invasive disease, nondrug resistant†				
	Current week	Previous 52 weeks		Cum 2008	Cum 2007	Current week	Previous 52 weeks		Cum 2008	Cum 2007
		Med	Max				Med	Max		
United States	44	96	259	4,525	4,534	32	35	166	1,353	1,516
New England	—	6	31	315	346	1	1	14	60	112
Connecticut	—	0	26	95	107	—	0	11	—	13
Maine§	—	0	3	26	24	1	0	1	2	2
Massachusetts	—	3	8	138	165	—	0	5	39	76
New Hampshire	—	0	2	26	26	—	0	1	11	11
Rhode Island§	—	0	9	18	8	—	0	2	7	8
Vermont§	—	0	2	12	16	—	0	1	1	2
Mid. Atlantic	6	18	43	885	836	2	3	19	158	270
New Jersey	—	3	11	133	154	—	1	6	30	52
New York (Upstate)	1	6	17	290	256	2	2	14	87	89
New York City	—	4	10	163	200	—	1	8	41	129
Pennsylvania	5	6	16	299	226	N	0	0	N	N
E.N. Central	2	19	42	832	856	4	6	23	231	260
Illinois	—	5	16	219	258	—	1	6	48	68
Indiana	1	2	11	119	103	—	0	14	34	17
Michigan	—	3	10	155	181	1	1	5	62	64
Ohio	1	5	14	237	200	3	1	5	54	55
Wisconsin	—	2	10	102	114	—	1	3	33	56
W.N. Central	—	5	39	339	297	1	2	16	122	86
Iowa	—	0	0	—	—	—	0	0	—	—
Kansas	—	0	5	34	29	—	0	3	16	1
Minnesota	—	0	35	154	144	—	0	13	53	47
Missouri	—	2	10	80	75	—	1	2	30	24
Nebraska§	—	1	3	39	23	1	0	3	8	13
North Dakota	—	0	5	12	15	—	0	2	8	1
South Dakota	—	0	2	20	11	—	0	1	7	—
S. Atlantic	9	22	37	972	1,104	5	7	16	258	273
Delaware	—	0	2	7	10	—	0	0	—	—
District of Columbia	—	0	4	26	17	—	0	1	2	2
Florida	6	5	11	232	276	3	1	4	57	58
Georgia	—	4	14	211	216	—	1	5	61	65
Maryland§	1	4	8	161	185	—	1	5	48	57
North Carolina	—	3	10	125	149	N	0	0	N	N
South Carolina§	—	1	5	61	90	2	1	4	45	47
Virginia§	2	3	12	117	137	—	1	6	38	37
West Virginia	—	0	3	32	24	—	0	1	7	7
E.S. Central	4	4	9	154	193	4	2	11	84	85
Alabama§	N	0	0	N	N	N	0	0	N	N
Kentucky	1	1	3	36	37	N	0	0	N	N
Mississippi	N	0	0	N	N	—	0	3	18	5
Tennessee§	3	3	6	118	156	4	1	9	66	80
W.S. Central	17	9	85	410	272	13	5	66	235	212
Arkansas§	—	0	2	5	17	—	0	2	6	13
Louisiana	—	0	2	15	15	—	0	2	10	33
Oklahoma	2	2	19	100	62	—	1	7	58	47
Texas§	15	6	65	290	178	13	3	58	161	119
Mountain	4	10	22	475	501	2	4	12	191	205
Arizona	2	4	9	182	191	2	2	8	97	99
Colorado	—	2	8	126	124	—	1	4	53	40
Idaho§	2	0	2	15	16	—	0	1	5	2
Montana§	N	0	0	N	N	—	0	1	4	1
Nevada§	—	0	1	10	2	N	0	0	N	N
New Mexico§	—	2	8	88	88	—	0	3	16	36
Utah	—	1	5	48	75	—	0	3	15	27
Wyoming§	—	0	2	6	5	—	0	1	1	—
Pacific	2	3	10	143	129	—	0	2	14	13
Alaska	2	1	4	37	24	N	0	0	N	N
California	—	0	0	—	—	N	0	0	N	N
Hawaii	—	2	10	106	105	—	0	2	14	13
Oregon§	N	0	0	N	N	N	0	0	N	N
Washington	N	0	0	N	N	N	0	0	N	N
American Samoa	—	0	12	30	4	N	0	0	N	N
C.N.M.I.	—	—	—	—	—	—	—	—	—	—
Guam	—	0	0	—	14	—	0	0	—	—
Puerto Rico	N	0	0	N	N	N	0	0	N	N
U.S. Virgin Islands	—	0	0	—	—	N	0	0	N	N

C.N.M.I.: Commonwealth of Northern Mariana Islands.

U: Unavailable. —: No reported cases. N: Not notifiable. Cum: Cumulative year-to-date counts. Med: Median. Max: Maximum.

* Incidence data for reporting year 2008 are provisional.

† Includes cases of invasive pneumococcal disease, in children aged <5 years, caused by *S. pneumoniae*, which is susceptible or for which susceptibility testing is not available (NNDS event code 11717).

§ Contains data reported through the National Electronic Disease Surveillance System (NEDSS).

TABLE II. (Continued) Provisional cases of selected notifiable diseases, United States, weeks ending November 8, 2008, and November 10, 2007 (45th week)*

Reporting area	<i>Streptococcus pneumoniae</i> , invasive disease, drug resistant†										Syphilis, primary and secondary				
	A					B									
	Current week	Previous 52 weeks		Cum 2008	Cum 2007	Current week	Previous 52 weeks		Cum 2008	Cum 2007	Current week	Previous 52 weeks		Cum 2008	Cum 2007
	Med	Max				Med	Max				Med	Max			
United States	35	57	307	2,377	2,534	7	9	43	359	432	77	233	351	9,987	9,679
New England	—	1	49	53	104	—	0	8	9	13	5	5	13	269	235
Connecticut	—	0	44	7	55	—	0	7	—	4	—	0	6	28	28
Maine§	—	0	2	17	11	—	0	1	3	2	—	0	2	10	9
Massachusetts	—	0	0	—	2	—	0	0	—	2	5	4	11	194	140
New Hampshire	—	0	0	—	—	—	0	0	—	—	—	0	2	19	26
Rhode Island§	—	0	3	16	19	—	0	1	4	3	—	0	5	13	29
Vermont§	—	0	2	13	17	—	0	1	2	2	—	0	5	5	3
Mid. Atlantic	2	4	13	208	141	—	0	2	19	26	14	32	51	1,455	1,342
New Jersey	—	0	0	—	—	—	0	0	—	—	—	4	10	162	191
New York (Upstate)	1	1	6	55	47	—	0	2	6	9	2	3	13	118	120
New York City	—	1	5	63	—	—	0	0	—	—	12	21	37	957	794
Pennsylvania	1	2	9	90	94	—	0	2	13	17	—	5	12	218	237
E.N. Central	7	14	64	602	657	2	2	14	86	99	9	19	33	858	757
Illinois	—	0	17	71	158	—	0	6	14	33	—	5	19	218	389
Indiana	—	2	39	179	150	—	0	11	21	24	2	2	10	118	47
Michigan	—	0	3	14	3	—	0	1	2	2	2	3	17	180	97
Ohio	7	8	17	338	346	2	1	4	49	40	5	6	15	291	169
Wisconsin	—	0	0	—	—	—	0	0	—	—	—	1	4	51	55
W.N. Central	1	3	115	137	171	—	0	9	9	38	1	8	15	335	308
Iowa	—	0	0	—	—	—	0	0	—	—	—	0	2	14	17
Kansas	—	1	5	58	79	—	0	1	4	8	—	0	5	26	19
Minnesota	—	0	114	—	25	—	0	9	—	24	—	2	5	86	52
Missouri	1	1	8	74	53	—	0	1	2	2	1	5	10	201	209
Nebraska§	—	0	0	—	2	—	0	0	—	—	—	0	2	8	4
North Dakota	—	0	0	—	—	—	0	0	—	—	—	0	1	—	—
South Dakota	—	0	2	5	12	—	0	1	3	4	—	0	0	—	7
S. Atlantic	21	22	53	1,036	1,106	3	4	10	175	199	28	50	215	2,213	2,237
Delaware	—	0	1	3	10	—	0	0	—	2	—	0	4	14	15
District of Columbia	—	0	3	15	19	—	0	1	1	1	—	2	9	109	163
Florida	14	13	30	605	610	1	3	6	112	107	8	20	36	868	776
Georgia	7	7	22	328	403	2	1	5	52	81	—	10	175	411	420
Maryland§	—	0	2	4	1	—	0	1	1	—	9	6	14	283	287
North Carolina	N	0	0	N	N	N	0	0	N	N	11	5	19	237	286
South Carolina§	—	0	0	—	—	—	0	0	—	—	—	1	5	71	86
Virginia§	N	0	0	N	N	N	0	0	N	N	—	5	17	218	198
West Virginia	—	1	9	81	63	—	0	2	9	8	—	0	1	2	6
E.S. Central	4	5	15	240	224	2	1	4	43	32	7	21	36	947	788
Alabama§	N	0	0	N	N	N	0	0	N	N	—	8	17	382	324
Kentucky	1	1	6	67	24	1	0	2	12	3	—	1	7	75	52
Mississippi	—	0	5	4	46	—	0	1	1	—	—	3	15	131	106
Tennessee§	3	3	13	169	154	1	0	3	30	29	7	8	18	359	306
W.S. Central	—	2	7	70	74	—	0	2	12	9	8	38	61	1,723	1,628
Arkansas§	—	0	2	13	6	—	0	1	3	2	5	2	19	151	107
Louisiana	—	1	7	57	68	—	0	2	9	7	3	9	22	386	457
Oklahoma	N	0	0	N	N	N	0	0	N	N	—	1	5	54	56
Texas§	—	0	0	—	—	—	0	0	—	—	—	25	48	1,132	1,008
Mountain	—	1	7	29	54	—	0	2	4	13	2	9	22	344	444
Arizona	—	0	0	—	—	—	0	0	—	—	—	4	17	145	243
Colorado	—	0	0	—	—	—	0	0	—	—	—	2	7	86	45
Idaho§	N	0	0	N	N	N	0	0	N	N	2	0	1	6	1
Montana§	—	0	0	—	—	—	0	0	—	—	—	0	3	—	4
Nevada§	N	0	0	N	N	N	0	0	N	N	—	1	6	68	96
New Mexico§	—	0	1	2	—	—	0	0	—	—	—	1	4	36	36
Utah	—	0	7	25	38	—	0	2	4	11	—	0	2	—	16
Wyoming§	—	0	1	2	16	—	0	1	—	2	—	0	1	3	3
Pacific	—	0	1	2	3	—	0	1	2	3	3	43	65	1,843	1,940
Alaska	N	0	0	N	N	N	0	0	N	N	—	0	1	1	7
California	N	0	0	N	N	N	0	0	N	N	2	38	59	1,658	1,789
Hawaii	—	0	1	2	3	—	0	1	2	3	—	0	2	14	7
Oregon§	N	0	0	N	N	N	0	0	N	N	—	0	3	20	16
Washington	N	0	0	N	N	N	0	0	N	N	1	3	9	150	121
American Samoa	N	0	0	N	N	N	0	0	N	N	—	0	0	—	4
C.N.M.I.	—	—	—	—	—	—	—	—	—	—	—	—	—	—	—
Guam	—	0	0	—	—	—	0	0	—	—	—	0	0	—	—
Puerto Rico	—	0	0	—	—	—	0	0	—	—	3	3	11	141	137
U.S. Virgin Islands	—	0	0	—	—	—	0	0	—	—	—	0	0	—	—

C.N.M.I.: Commonwealth of Northern Mariana Islands.

U: Unavailable. —: No reported cases. N: Not notifiable. Cum: Cumulative year-to-date counts. Med: Median. Max: Maximum.

* Incidence data for reporting year 2008 are provisional.

† Includes cases of invasive pneumococcal disease caused by drug-resistant *S. pneumoniae* (DRSP) (NNDSS event code 11720).

§ Contains data reported through the National Electronic Disease Surveillance System (NEDSS).

TABLE II. (Continued) Provisional cases of selected notifiable diseases, United States, weeks ending November 8, 2008, and November 10, 2007 (45th week)*

Reporting area	West Nile virus disease†														
	Varicella (chickenpox)					Neuroinvasive					Nonneuroinvasive§				
	Current week	Previous 52 weeks		Cum 2008	Cum 2007	Current week	Previous 52 weeks		Cum 2008	Cum 2007	Current week	Previous 52 weeks		Cum 2008	Cum 2007
	Med	Max				Med	Max				Med	Max			
United States	297	622	1,660	22,759	33,675	—	1	80	585	1,219	—	2	82	661	2,392
New England	9	11	68	443	2,190	—	0	2	6	5	—	0	1	3	6
Connecticut	—	0	38	—	1,256	—	0	2	5	2	—	0	1	3	2
Maine¶	—	0	14	—	302	—	0	0	—	—	—	0	0	—	—
Massachusetts	—	0	1	1	—	—	0	0	—	3	—	0	0	—	3
New Hampshire	2	6	18	220	310	—	0	0	—	—	—	0	0	—	—
Rhode Island¶	—	0	0	—	—	—	0	1	1	—	—	0	0	—	1
Vermont¶	7	6	17	222	322	—	0	0	—	—	—	0	0	—	—
Mid. Atlantic	57	50	83	1,988	4,234	—	0	8	45	22	—	0	5	19	11
New Jersey	N	0	0	N	N	—	0	1	3	1	—	0	1	4	—
New York (Upstate)	N	0	0	N	N	—	0	5	23	3	—	0	2	7	1
New York City	N	0	0	N	N	—	0	2	8	13	—	0	2	6	5
Pennsylvania	57	50	83	1,988	4,234	—	0	2	11	5	—	0	1	2	5
E.N. Central	67	140	336	5,636	9,554	—	0	7	43	111	—	0	5	22	65
Illinois	12	14	63	938	963	—	0	4	11	61	—	0	2	8	38
Indiana	—	0	222	—	222	—	0	1	2	14	—	0	1	1	10
Michigan	15	61	154	2,381	3,515	—	0	4	11	16	—	0	2	6	1
Ohio	40	49	128	1,952	3,926	—	0	3	16	13	—	0	2	3	10
Wisconsin	—	4	38	365	928	—	0	1	3	7	—	0	1	4	6
W.N. Central	13	22	145	973	1,364	—	0	6	42	249	—	0	23	157	738
Iowa	N	0	0	N	N	—	0	3	5	12	—	0	1	4	17
Kansas	—	5	36	316	485	—	0	2	6	14	—	0	4	26	26
Minnesota	—	0	0	—	—	—	0	2	3	44	—	0	6	18	57
Missouri	13	10	51	588	801	—	0	3	11	61	—	0	1	7	16
Nebraska¶	N	0	0	N	N	—	0	1	4	21	—	0	8	33	142
North Dakota	—	0	140	49	—	—	0	2	2	49	—	0	12	41	320
South Dakota	—	0	5	20	78	—	0	5	11	48	—	0	6	28	160
S. Atlantic	41	92	173	4,065	4,531	—	0	3	13	43	—	0	3	12	39
Delaware	—	1	6	46	45	—	0	0	—	1	—	0	1	1	—
District of Columbia	—	0	3	22	27	—	0	0	—	—	—	0	0	—	—
Florida	30	28	87	1,424	1,108	—	0	2	2	3	—	0	0	—	—
Georgia	N	0	0	N	N	—	0	1	3	23	—	0	1	4	27
Maryland¶	N	0	0	N	N	—	0	2	7	6	—	0	2	6	4
North Carolina	N	0	0	N	N	—	0	0	—	4	—	0	0	—	4
South Carolina¶	3	15	66	741	965	—	0	0	—	3	—	0	0	—	2
Virginia¶	7	24	81	1,229	1,384	—	0	0	—	3	—	0	1	1	2
West Virginia	1	13	66	603	1,002	—	0	1	1	—	—	0	0	—	—
E.S. Central	8	18	101	1,002	502	—	0	9	52	74	—	0	12	81	96
Alabama¶	8	17	101	989	500	—	0	3	11	17	—	0	3	9	7
Kentucky	N	0	0	N	N	—	0	1	3	4	—	0	0	—	—
Mississippi	—	0	2	13	2	—	0	6	32	48	—	0	10	66	83
Tennessee¶	N	0	0	N	N	—	0	1	6	5	—	0	2	6	6
W.S. Central	101	174	886	6,923	8,944	—	0	7	55	267	—	0	8	54	155
Arkansas¶	1	10	38	514	665	—	0	2	8	13	—	0	0	—	7
Louisiana	—	1	10	63	108	—	0	2	9	27	—	0	6	27	12
Oklahoma	N	0	0	N	N	—	0	1	2	59	—	0	1	5	47
Texas¶	100	165	852	6,346	8,171	—	0	6	36	168	—	0	4	22	89
Mountain	—	36	105	1,620	2,294	—	0	12	88	287	—	0	23	180	1,037
Arizona	—	0	0	—	—	—	0	10	53	49	—	0	8	44	45
Colorado	—	15	43	723	928	—	0	4	13	99	—	0	12	64	477
Idaho¶	N	0	0	N	N	—	0	1	2	11	—	0	7	30	119
Montana¶	—	6	27	278	349	—	0	0	—	37	—	0	2	5	165
Nevada¶	N	0	0	N	N	—	0	2	8	1	—	0	3	7	10
New Mexico¶	—	4	22	175	334	—	0	2	6	39	—	0	1	3	21
Utah	—	10	55	434	649	—	0	2	6	28	—	0	4	19	42
Wyoming¶	—	0	4	10	34	—	0	0	—	23	—	0	2	8	158
Pacific	1	2	8	109	62	—	0	36	241	161	—	0	20	133	245
Alaska	1	1	5	58	34	—	0	0	—	—	—	0	0	—	—
California	—	0	0	—	—	—	0	36	240	154	—	0	19	129	226
Hawaii	—	1	6	51	28	—	0	0	—	—	—	0	0	—	—
Oregon¶	N	0	0	N	N	—	0	0	—	7	—	0	1	3	19
Washington	N	0	0	N	N	—	0	1	1	—	—	0	1	1	—
American Samoa	N	0	0	N	N	—	0	0	—	—	—	0	0	—	—
C.N.M.I.	—	—	—	—	—	—	—	—	—	—	—	—	—	—	—
Guam	—	2	17	62	227	—	0	0	—	—	—	0	0	—	—
Puerto Rico	—	7	20	371	657	—	0	0	—	—	—	0	0	—	—
U.S. Virgin Islands	—	0	0	—	—	—	0	0	—	—	—	0	0	—	—

C.N.M.I.: Commonwealth of Northern Mariana Islands.

U: Unavailable. —: No reported cases. N: Not notifiable. Cum: Cumulative year-to-date counts. Med: Median. Max: Maximum.

* Incidence data for reporting year 2008 are provisional.

† Updated weekly from reports to the Division of Vector-Borne Infectious Diseases, National Center for Zoonotic, Vector-Borne, and Enteric Diseases (ArboNET Surveillance). Data for California serogroup, eastern equine, Powassan, St. Louis, and western equine diseases are available in Table I.

§ Not notifiable in all states. Data from states where the condition is not notifiable are excluded from this table, except in 2007 for the domestic arboviral diseases and influenza-associated pediatric mortality, and in 2003 for SARS-CoV. Reporting exceptions are available at <http://www.cdc.gov/epo/dphsi/pbs/infdis.htm>.

¶ Contains data reported through the National Electronic Disease Surveillance System (NEDSS).

TABLE III. Deaths in 122 U.S. cities,* week ending November 8, 2008 (45th week)

Reporting area	All causes, by age (years)						P&I† Total	Reporting area	All causes, by age (years)						P&I† Total
	All Ages	≥65	45-64	25-44	1-24	<1			All Ages	≥65	45-64	25-44	1-24	<1	
New England	500	348	85	42	15	10	46	S. Atlantic	1,170	717	316	77	36	23	59
Boston, MA	134	70	31	21	8	4	8	Atlanta, GA	105	59	31	8	6	1	1
Bridgeport, CT	41	33	4	3	1	—	5	Baltimore, MD	134	71	46	10	2	5	10
Cambridge, MA	14	11	3	—	—	—	3	Charlotte, NC	109	69	27	8	3	2	15
Fall River, MA	24	21	1	2	—	—	2	Jacksonville, FL	166	96	50	8	6	5	8
Hartford, CT	39	25	8	5	1	—	3	Miami, FL	100	64	25	8	1	2	6
Lowell, MA	21	16	4	—	—	1	1	Norfolk, VA	51	27	12	6	4	2	2
Lynn, MA	14	12	1	—	1	—	1	Richmond, VA	56	33	19	—	3	1	1
New Bedford, MA	23	19	3	1	—	—	6	Savannah, GA	50	32	9	8	1	—	2
New Haven, CT	U	U	U	U	U	U	U	St. Petersburg, FL	50	31	13	3	1	2	1
Providence, RI	55	39	11	1	1	3	4	Tampa, FL	224	154	55	10	4	1	5
Somerville, MA	2	1	—	1	—	—	—	Washington, D.C.	112	72	26	8	4	2	4
Springfield, MA	36	25	6	1	2	2	6	Wilmington, DE	13	9	3	—	1	—	4
Waterbury, CT	40	31	6	2	1	—	3	E.S. Central	799	514	210	47	17	11	63
Worcester, MA	57	45	7	5	—	—	4	Birmingham, AL	151	99	39	4	5	4	10
Mid. Atlantic	1,716	1,165	384	102	43	20	88	Chattanooga, TN	72	47	20	3	1	1	6
Albany, NY	58	40	15	2	1	—	4	Savannah, TN	107	67	31	6	—	3	7
Allentown, PA	26	22	3	—	1	—	2	Lexington, KY	51	36	12	3	—	—	4
Buffalo, NY	82	53	17	7	3	2	3	Memphis, TN	164	98	45	15	5	1	19
Camden, NJ	U	U	U	U	U	U	U	Mobile, AL	75	54	12	7	1	1	5
Elizabeth, NJ	19	15	2	2	—	—	2	Montgomery, AL	42	27	13	1	1	—	5
Erie, PA	51	41	10	—	—	—	5	Nashville, TN	137	86	38	8	4	1	7
Jersey City, NJ	U	U	U	U	U	U	U	W.S. Central	1,388	894	340	92	28	34	76
New York City, NY	967	652	233	51	19	11	43	Austin, TX	83	42	29	7	1	4	7
Newark, NJ	27	13	10	3	1	—	4	Baton Rouge, LA	U	U	U	U	U	U	U
Paterson, NJ	19	10	8	—	1	—	2	Corpus Christi, TX	60	46	12	2	—	—	3
Philadelphia, PA	136	73	35	19	6	2	1	Dallas, TX	188	118	47	12	7	4	10
Pittsburgh, PA§	45	25	11	5	3	1	3	El Paso, TX	71	52	14	4	—	1	6
Reading, PA	36	29	4	2	—	1	3	Fort Worth, TX	128	87	26	5	2	8	7
Rochester, NY	132	96	21	7	5	3	9	Houston, TX	384	238	93	32	11	10	24
Schenectady, NY	19	15	3	1	—	—	4	Little Rock, AR	76	49	19	7	1	—	1
Scranton, PA	20	19	—	—	1	—	—	New Orleans, LA¶	U	U	U	U	U	U	U
Syracuse, NY	27	21	5	—	1	—	3	San Antonio, TX	240	155	64	9	6	6	10
Trenton, NJ	27	20	4	3	—	—	—	Shreveport, LA	35	23	10	2	—	—	2
Utica, NY	15	14	1	—	—	—	—	Tulsa, OK	123	84	26	12	—	1	6
Yonkers, NY	10	7	2	—	1	—	—	Mountain	995	660	211	69	28	27	57
E.N. Central	2,026	1,377	464	107	34	44	126	Albuquerque, NM	109	75	23	5	—	6	7
Akron, OH	U	U	U	U	U	U	U	Boise, ID	52	39	8	1	—	4	3
Canton, OH	31	24	6	1	—	—	4	Colorado Springs, CO	75	52	15	4	2	2	2
Chicago, IL	336	200	93	28	10	5	23	Denver, CO	79	51	17	7	4	—	2
Cincinnati, OH	88	63	18	2	2	3	5	Las Vegas, NV	241	174	44	17	3	3	14
Cleveland, OH	227	163	53	4	4	3	7	Ogden, UT	25	16	6	2	—	1	1
Columbus, OH	235	158	55	11	4	7	7	Phoenix, AZ	129	72	35	9	9	4	5
Dayton, OH	156	112	35	7	—	2	12	Pueblo, CO	26	15	9	2	—	—	—
Detroit, MI	152	84	48	14	3	3	12	Salt Lake City, UT	117	72	22	11	7	5	13
Evansville, IN	39	22	12	5	—	—	1	Tucson, AZ	142	94	32	11	3	2	10
Fort Wayne, IN	69	54	7	5	—	3	8	Pacific	1,389	959	298	60	40	31	120
Gary, IN	7	3	1	1	—	2	—	Berkeley, CA	6	6	—	—	—	—	—
Grand Rapids, MI	60	45	8	1	—	6	6	Fresno, CA	U	U	U	U	U	U	U
Indianapolis, IN	181	123	42	9	4	3	14	Glendale, CA	44	40	3	—	1	—	8
Lansing, MI	46	32	11	1	—	2	2	Honolulu, HI	69	52	14	3	—	—	7
Milwaukee, WI	81	53	20	5	1	2	4	Long Beach, CA	78	45	22	4	5	2	11
Peoria, IL	51	36	12	3	—	—	6	Los Angeles, CA	246	149	64	14	12	7	29
Rockford, IL	61	46	8	4	2	1	3	Pasadena, CA	24	16	5	1	—	2	3
South Bend, IN	54	37	10	4	2	1	3	Portland, OR	96	75	14	5	2	—	3
Toledo, OH	95	70	20	2	2	1	9	Sacramento, CA	184	130	35	7	5	7	18
Youngstown, OH	57	52	5	—	—	—	—	San Diego, CA	135	88	32	6	4	4	13
W.N. Central	595	389	131	37	20	17	28	San Francisco, CA	U	U	U	U	U	U	U
Des Moines, IA	93	69	15	6	1	2	5	San Jose, CA	198	140	45	6	5	2	18
Duluth, MN	23	18	4	—	1	—	2	Santa Cruz, CA	28	19	6	3	—	—	—
Kansas City, KS	28	15	7	5	—	1	2	Seattle, WA	110	72	26	7	1	4	6
Kansas City, MO	109	72	26	4	4	3	5	Spokane, WA	66	49	11	2	2	2	3
Lincoln, NE	23	14	5	2	—	2	1	Tacoma, WA	105	78	21	2	3	1	1
Minneapolis, MN	54	31	13	7	2	1	2	Total**	10,578	7,023	2,439	633	261	217	663
Omaha, NE	79	53	20	—	3	3	4								
St. Louis, MO	72	37	17	9	5	3	3								
St. Paul, MN	50	37	9	3	1	—	1								
Wichita, KS	64	43	15	1	3	2	3								

U: Unavailable. —:No reported cases.

* Mortality data in this table are voluntarily reported from 122 cities in the United States, most of which have populations of >100,000. A death is reported by the place of its occurrence and by the week that the death certificate was filed. Fetal deaths are not included.

† Pneumonia and influenza.

§ Because of changes in reporting methods in this Pennsylvania city, these numbers are partial counts for the current week. Complete counts will be available in 4 to 6 weeks.

¶ Because of Hurricane Katrina, weekly reporting of deaths has been temporarily disrupted.

** Total includes unknown ages.

The *Morbidity and Mortality Weekly Report (MMWR)* Series is prepared by the Centers for Disease Control and Prevention (CDC) and is available free of charge in electronic format. To receive an electronic copy each week, send an e-mail message to listserv@listserv.cdc.gov. The body content should read *SUBscribe mmwr-toc*. Electronic copy also is available from CDC's Internet server at <http://www.cdc.gov/mmwr> or from CDC's file transfer protocol server at <ftp://ftp.cdc.gov/pub/publications/mmwr>. Paper copy subscriptions are available through the Superintendent of Documents, U.S. Government Printing Office, Washington, DC 20402; telephone 202-512-1800.

Data in the weekly *MMWR* are provisional, based on weekly reports to CDC by state health departments. The reporting week concludes at close of business on Friday; compiled data on a national basis are officially released to the public on the following Friday. Data are compiled in the National Center for Public Health Informatics, Division of Integrated Surveillance Systems and Services. Address all inquiries about the *MMWR* Series, including material to be considered for publication, to Editor, *MMWR* Series, Mailstop E-90, CDC, 1600 Clifton Rd., N.E., Atlanta, GA 30333 or to mmwrq@cdc.gov.

All material in the *MMWR* Series is in the public domain and may be used and reprinted without permission; citation as to source, however, is appreciated.

Use of trade names and commercial sources is for identification only and does not imply endorsement by the U.S. Department of Health and Human Services.

References to non-CDC sites on the Internet are provided as a service to *MMWR* readers and do not constitute or imply endorsement of these organizations or their programs by CDC or the U.S. Department of Health and Human Services. CDC is not responsible for the content of these sites. URL addresses listed in *MMWR* were current as of the date of publication.