



# MMWR<sup>TM</sup>

## Morbidity and Mortality Weekly Report

[www.cdc.gov/mmwr](http://www.cdc.gov/mmwr)

Weekly

July 11, 2008 / Vol. 57 / No. 27

### Populations Receiving Optimally Fluoridated Public Drinking Water — United States, 1992–2006

Water fluoridation has been identified by CDC as one of 10 great public health achievements of the 20th century. The decline in the prevalence and severity of dental caries (tooth decay) in the United States during the past 60 years has been attributed largely to the increased use of fluoride (1). Community water fluoridation is an equitable and cost-effective method for delivering fluoride to the community (2–4). A *Healthy People 2010* objective is to increase to 75% the proportion of the U.S. population served by community water systems who receive optimally fluoridated water\* (5). To update and revise previous reports on fluoridation in the United States (4) and describe progress toward the *Healthy People 2010* objective, CDC analyzed fluoridation data for the period 1992–2006 from the 50 states and District of Columbia (DC). The results indicated that the percentage of the U.S. population served by community water systems who received optimally fluoridated water increased from 62.1% in 1992, to 65.0% in 2000, and 69.2% in 2006, and those percentages varied substantially by state. Public health officials and policymakers in states with lower percentages of residents receiving optimal water fluoridation should consider increasing their efforts to promote fluoridation of community water systems to prevent dental caries.

Since 1945, the U.S. Public Health Service and CDC (beginning in 1975) have tracked the number of persons in the United States receiving fluoridated water.† The U.S. Environmental Protection Agency (EPA) does not regulate water fluoridation, and EPA's Safe Drinking Water Information System (SDWIS) only tracks fluoride concentrations in

water systems with naturally occurring fluoride levels above the established regulatory maximum contaminant level (4.0 ppm<sup>§</sup>). Water fluoridation is managed at the state level, and CDC relies on states to provide data on individual community water systems (e.g., population served, fluoride concentration, and fluoride source). During 1998–2000, CDC, in partnership with the Association of State and Territorial Dental Directors, developed the Water Fluoridation Reporting System (WFRS) to support management and tracking of state fluoridation programs. WFRS is a voluntary system designed, in part, to make additional use of community water system data that states were already required to report to EPA as part of SDWIS.

In March 2007, CDC asked state dental directors and drinking water administrators to validate their state data reported via WFRS for 2006. Estimates of the population served by community water systems were based on the number of households served (i.e., service connections) and the number of persons in each household. Some states supplemented population data in WFRS with population data from SDWIS, which can differ slightly from WFRS. The percentage of the population served by community water systems who received

<sup>§</sup>EPA also has set a secondary maximum contaminant level of 2.0 ppm as a precaution against possible tooth discoloration or pitting from excess fluoride exposure during the formative period for young children. Additional information is available at <http://www.epa.gov/safewater/consumer/2ndstandards.html>.

\* Defined as a fluoride concentration of 0.7–1.2 ppm, depending on the average maximum daily air temperature in the area; optimal concentrations are set lower in warmer climates, where the populations drink more water, and higher in cooler climates.

† Available at [http://www.cdc.gov/nohss/fgrowth\\_text.htm](http://www.cdc.gov/nohss/fgrowth_text.htm).

#### INSIDE

- 741 Monitoring Health Effects of Wildfires Using the BioSense System — San Diego County, California, October 2007
- 744 Disparities in Secondhand Smoke Exposure — United States, 1988–1994 and 1999–2004
- 748 QuickStats

The *MMWR* series of publications is published by the Coordinating Center for Health Information and Service, Centers for Disease Control and Prevention (CDC), U.S. Department of Health and Human Services, Atlanta, GA 30333.

**Suggested Citation:** Centers for Disease Control and Prevention. [Article title]. *MMWR* 2008;57:[inclusive page numbers].

#### Centers for Disease Control and Prevention

Julie L. Gerberding, MD, MPH  
*Director*

Tanja Popovic, MD, PhD  
*Chief Science Officer*

James W. Stephens, PhD  
*Associate Director for Science*

Steven L. Solomon, MD  
*Director, Coordinating Center for Health Information and Service*

Jay M. Bernhardt, PhD, MPH  
*Director, National Center for Health Marketing*

Katherine L. Daniel, PhD  
*Deputy Director, National Center for Health Marketing*

#### Editorial and Production Staff

Frederic E. Shaw, MD, JD  
*Editor, MMWR Series*

Susan E. Davis, MD  
*(Acting) Assistant Editor, MMWR Series*

Teresa F. Rutledge  
*(Acting) Managing Editor, MMWR Series*

Douglas W. Weatherwax  
*Lead Technical Writer-Editor*

Donald G. Meadows, MA  
Jude C. Rutledge  
*Writers-Editors*

Peter M. Jenkins  
*(Acting) Lead Visual Information Specialist*

Lynda G. Cupell  
Malbea A. LaPete  
*Visual Information Specialists*

Quang M. Doan, MBA  
Erica R. Shaver  
*Information Technology Specialists*

#### Editorial Board

William L. Roper, MD, MPH, Chapel Hill, NC, Chairman

Virginia A. Caine, MD, Indianapolis, IN

David W. Fleming, MD, Seattle, WA

William E. Halperin, MD, DrPH, MPH, Newark, NJ

Margaret A. Hamburg, MD, Washington, DC

King K. Holmes, MD, PhD, Seattle, WA

Deborah Holtzman, PhD, Atlanta, GA

John K. Iglehart, Bethesda, MD

Dennis G. Maki, MD, Madison, WI

Sue Mallonee, MPH, Oklahoma City, OK

Stanley A. Plotkin, MD, Doylestown, PA

Patricia Quinlisk, MD, MPH, Des Moines, IA

Patrick L. Remington, MD, MPH, Madison, WI

Barbara K. Rimer, DrPH, Chapel Hill, NC

John V. Rullan, MD, MPH, San Juan, PR

Anne Schuchat, MD, Atlanta, GA

Dixie E. Snider, MD, MPH, Atlanta, GA

John W. Ward, MD, Atlanta, GA

optimally fluoridated water was calculated by dividing the population served by community water systems with optimal fluoride levels by the total population served by community water systems.

For eight states and DC, the reported 2006 total community water system population estimates exceeded mid-year intercensal state population estimates (6), which can occur when applying a standard persons-per-household factor to the number of households served. For these eight states and DC, state community water system population estimates were set equal to the intercensal state population estimates, and estimates of the population receiving optimally fluoridated water were reduced by a factor equal to the state's intercensal population estimate divided by the initially reported total state community water system population. National community water system population estimates were calculated by adding the state community water system population estimates after this reduction.

CDC previously published a report on fluoridation estimates for 2000 (4), using WFRS data reviewed by state oral health programs. At that time, state community water system populations that exceeded the state's 2000 census populations (seven states and DC) were changed to match the 2000 census populations. Earlier, in calculating 1992 fluoridation estimates, state community water system populations that exceeded state census population estimates also were changed to match 1992 intercensal state population estimates (10 states and DC). Because these two reports used the reduced state community water system populations for their calculations without making any adjustments to the populations receiving fluoridated water, the percentages potentially were overstated. This report revises the 2000 fluoridation percentage estimates, applying the same methods used to produce the 2006 estimates, and reflecting improvements in the quality and accuracy of some WFRS state data. The 1992 fluoridation estimates could not be revised similarly because water system population data from 1992 were no longer available.

In 2006, 69.2% of the U.S. population served by community water systems received optimally fluoridated water (Table 1), an increase from 62.1% in 1992, and from 65.0% in 2000 (Table 2). State-specific percentages in 2006 ranged from 8.4% in Hawaii to 100% in DC (median: 77.0%). In 2006, the *Healthy People 2010* target of 75% had been met by 25 states and DC (Table 1). Overall, approximately 184 million persons served by community water systems received fluoridated water; of that number, approximately 8 million persons received water with sufficient naturally occurring fluoride concentrations.

During 1992–2006, 39 states reported increases in the percentage of their populations served by community water

**TABLE 1. Estimated number and percentage of persons served by community water systems who received optimally fluoridated water,\* by state/area — United States, 2006**

State/ Area	No. served by community water systems	No. receiving optimally fluoridated water	(%)
<b>United States</b>	<b>265,794,252</b>	<b>184,028,038</b>	<b>(69.2)</b>
Alabama <sup>†</sup>	4,599,030	3,814,295	(82.9)
Alaska	519,379	308,801	(59.5)
Arizona	5,611,581	3,147,245	(56.1)
Arkansas	2,561,312	1,648,317	(64.4)
California <sup>†§</sup>	36,457,549	9,881,390	(27.1)
Colorado	4,190,698	3,085,319	(73.6)
Connecticut	2,691,412	2,393,487	(88.9)
Delaware	819,176	603,207	(73.6)
District of Columbia <sup>†</sup>	581,530	581,530	(100.0)
Florida	16,729,803	13,006,128	(77.7)
Georgia <sup>†</sup>	9,393,941	8,974,302	(95.8)
Hawaii <sup>†§</sup>	1,285,498	107,684	(8.4)
Idaho	1,011,949	316,350	(31.3)
Illinois	11,484,994	11,355,747	(98.9)
Indiana	4,550,057	4,327,916	(95.1)
Iowa	2,558,575	2,363,277	(92.4)
Kansas	2,563,505	1,669,657	(65.1)
Kentucky <sup>†</sup>	4,206,074	4,199,519	(99.8)
Louisiana <sup>†</sup>	4,287,768	1,731,807	(40.4)
Maine	630,136	501,290	(79.6)
Maryland	4,847,653	4,549,055	(93.8)
Massachusetts <sup>†</sup>	6,437,193	3,802,732	(59.1)
Michigan	7,335,365	6,664,706	(90.9)
Minnesota	3,956,659	3,905,754	(98.7)
Mississippi <sup>†</sup>	2,910,540	1,480,601	(50.9)
Missouri	4,928,689	3,928,100	(79.7)
Montana	794,563	248,850	(31.3)
Nebraska	1,420,624	991,292	(69.8)
Nevada	2,422,152	1,744,984	(72.0)
New Hampshire	832,656	354,637	(42.6)
New Jersey	7,839,608	1,771,324	(22.6)
New Mexico	1,567,857	1,207,034	(77.0)
New York	17,471,590	12,733,582	(72.9)
North Carolina	6,498,294	5,689,906	(87.6)
North Dakota	574,346	552,785	(96.2)
Ohio	10,021,630	8,948,975	(89.3)
Oklahoma	3,392,725	2,493,521	(73.5)
Oregon	3,069,204	839,727	(27.4)
Pennsylvania	10,390,234	5,610,873	(54.0)
Rhode Island	977,261	826,863	(84.6)
South Carolina	3,545,617	3,355,873	(94.6)
South Dakota	691,333	657,022	(95.0)
Tennessee	5,220,410	4,889,987	(93.7)
Texas	21,731,824	16,979,975	(78.1)
Utah	2,242,897	1,216,980	(54.3)
Vermont	529,441	310,953	(58.7)
Virginia	6,135,847	5,830,328	(95.0)
Washington	5,628,782	3,542,948	(62.9)
West Virginia	1,360,193	1,247,301	(91.7)
Wisconsin	3,868,775	3,471,706	(89.7)
Wyoming	446,323	162,396	(36.4)

\* Defined as a fluoride concentration of 0.7–1.2 ppm, depending on the average maximum daily air temperature in the area.

<sup>†</sup> State's estimated population served by community water systems exceeded the U.S. Census intercensal state population estimate; therefore, number of persons receiving optimally fluoridated water was reduced by the ratio of the intercensal population estimate to the community water systems population estimate.

<sup>§</sup> Complete data were not available from the Water Fluoridation Reporting System; state provided additional information.

**TABLE 2. Healthy People 2010 baseline estimate of the percentage of population served by community water systems who received optimally fluoridated water\* in 1992, revised 2000 estimate, and percentage-point changes over time, by state/area — United States, 1992, 2000, and 2006**

State/Area	Healthy People 1992 baseline %	Revised 2000 %	Percentage- point change (2000 to 2006)	Percentage- point change (1992 to 2006)
<b>United States<sup>†</sup></b>	<b>62.1</b>	<b>65.0</b>	<b>4.2</b>	<b>7.1</b>
Alabama <sup>†</sup>	82.6	83.1	-0.2	0.3
Alaska	61.2	55.2	4.3	-1.7
Arizona	49.9	55.5	0.6	6.2
Arkansas <sup>†§</sup>	58.7	48.1	16.3	5.7
California <sup>§</sup>	15.7	28.7	-1.6	11.4
Colorado <sup>†§</sup>	81.7	73.0	0.6	-8.1
Connecticut	85.9	88.8	0.1	3.0
Delaware	67.4	80.9	-7.3	6.2
District of Columbia	100.0	100.0	0.0	0.0
Florida	58.3	62.6	15.1	19.4
Georgia	92.1	92.9	2.9	3.7
Hawaii <sup>†</sup>	13.0	8.7	-0.3	-4.6
Idaho	48.3	45.4	-14.1	-17.0
Illinois	95.2	93.4	5.5	3.7
Indiana	98.6	95.3	-0.2	-3.5
Iowa	91.4	91.3	1.1	1.0
Kansas	58.4	62.5	2.6	6.7
Kentucky	100.0	96.1	3.7	-0.2
Louisiana <sup>†</sup>	55.7	50.6	-10.2	-15.3
Maine	55.8	75.4	4.2	23.8
Maryland <sup>†</sup>	85.8	76.1	17.7	8.0
Massachusetts <sup>†§</sup>	57.0	54.8	4.3	2.1
Michigan	88.5	90.7	0.2	2.4
Minnesota	93.4	98.2	0.5	5.3
Mississippi <sup>†</sup>	48.4	46.1	4.8	2.5
Missouri <sup>†</sup>	71.4	67.1	12.6	8.3
Montana	25.9	22.2	9.1	5.4
Nebraska <sup>†§</sup>	62.1	69.8	0.0	7.7
Nevada <sup>†§</sup>	2.1	66.2	5.8	69.9
New Hampshire	24.0	43.0	-0.4	18.6
New Jersey	16.2	15.5	7.1	6.4
New Mexico	66.2	76.7	0.3	10.8
New York <sup>†§</sup>	69.7	74.7	-1.8	3.2
North Carolina	78.5	83.3	4.3	9.1
North Dakota	96.4	95.4	0.8	-0.2
Ohio	87.9	87.6	1.7	1.4
Oklahoma <sup>†§</sup>	58.0	73.1	0.4	15.5
Oregon <sup>†§</sup>	24.8	17.2	4.7	2.6
Pennsylvania	20.9	54.2	-0.2	33.1
Rhode Island	100.0	85.1	-0.5	-15.4
South Carolina	90.0	91.2	3.4	4.6
South Dakota <sup>†§</sup>	100.0	86.2	8.8	-5.0
Tennessee	92.0	94.5	-0.8	1.7
Texas	64.0	65.7	12.4	14.1
Utah <sup>†§</sup>	3.1	1.7	52.6	51.2
Vermont	57.4	54.2	4.5	1.3
Virginia	72.1	93.3	1.7	22.9
Washington <sup>†§</sup>	53.2	41.0	21.9	9.7
West Virginia <sup>†§</sup>	82.1	65.3	26.4	9.6
Wisconsin	93.0	89.3	0.4	-3.3
Wyoming <sup>†</sup>	35.7	29.7	6.7	0.7

\* Defined as a fluoride concentration of 0.7–1.2 ppm, depending on the average maximum daily air temperature in the area.

<sup>†</sup> Estimate for 2000 was changed from that previously reported because of new methodology, improvements in the quality and accuracy of Water Fluoridation Reporting System (WFRS) data, or rounding error. Previous estimates were as follows: United States, 65.8%; Alabama, 89.2%; Arkansas, 59.9%; Colorado, 76.9%; Hawaii, 9.0%; Louisiana, 53.2%; Maryland, 90.7%; Massachusetts, 55.8%; Mississippi, 46.0%; Missouri, 80.5%; Nebraska, 77.7%; Nevada, 65.9%; New York, 67.8%; Oklahoma, 74.6%; Oregon, 22.7%; South Dakota, 88.4%; Utah, 2.0%; Washington, 57.8%; West Virginia, 87.0%; Wyoming, 30.3%.

<sup>§</sup> Complete data for 2000 were not available from WFRS; state provided additional information.

systems who received optimally fluoridated water; percentage-point increases ranged from 0.3 in Alabama to 69.9 in Nevada (median: 6.2). Ten states had decreases; percentage-point decreases ranged from 0.2 in Kentucky and North Dakota to 17.0 in Idaho (median: 4.3) (Table 2). Throughout 1992–2006, 100% of the DC population served by community water systems received optimally fluoridated water.

**Reported by:** W Bailey, DDS, L Barker, MSPH, K Duchon, MS, W Maas, DDS, Div of Oral Health, National Center for Chronic Disease Prevention and Health Promotion, CDC.

**Editorial Note:** Dental caries is a complex, chronic disease with multiple protective factors (e.g., dental sealants or healthy dietary practices), including fluoride (7); teeth remain at risk for decay throughout the lifespan, with older adults experiencing rates of caries similar to rates among children (8). Community water fluoridation has been effective in preventing tooth decay (1). Commercially sold bottled waters might or might not contain fluoride, and most bottled waters do not contain fluoride in optimal concentrations (9).

WFRS data indicate that, from 1992 to 2006, the percentage of the U.S. population served by community water systems who received optimally fluoridated water increased from 62.1% to 69.2%. During that period, the percentage increased in most states; by 2006, half the states had reached the *Healthy People 2010* target of 75%. However, the 2006 data also indicate substantial differences among states in progress toward that target. For example, in California, the percentage of the state population served by community water systems who received optimally fluoridated water increased by 11.4 percentage points from 1992 to 2006. However, in 2006, the percentage of the California population served by community water systems who received optimally fluoridated was only 27.1%, third lowest among states. A 1995 state law required community water systems in California to implement fluoridation if state funds were provided to the community; however, implementation has been limited by engineering and funding constraints. In Idaho, the percentage receiving optimally fluoridated water declined by 17.0 percentage points from 1992 to 2006 because of reclassification from optimal to below optimal of a large community water system in Boise. In Louisiana, the percentage declined by 15.3 points during the same period, largely because of relocation of a substantial number of residents from areas with fluoridation to areas without fluoridation after Hurricane Katrina. In Maine, several local referenda were passed during 1996–2004, authorizing community water systems to fluoridate; as a result, 29 communities gained access to fluoridated water. The Maine percentage increased by 23.8 percentage points during 1992–2006.

The findings in this report are subject to at least three limitations. First, revision of estimated percentages for 2000 using original community water system populations without similar revision of 1992 percentages resulted in a slight underestimation of percentage-point changes among certain states from 1992 to 2006. Second, changes in percentages over time for some states resulted from improvements in the quality and accuracy of WFRS data collection and not from actual increases or decreases in the state population with optimal fluoridation. Finally, not all data came from WFRS; some states provided data from other sources, which might have reduced comparability of estimates among states.

Since its development during 1998–2000, WFRS has become a valuable tool for monitoring fluoridation programs, improving fluoridation data quality, and routinely reporting fluoridation status at national, state, and local levels. For 2006, 48 states and DC reported their data via WFRS. In 2002, CDC developed and launched two Internet-based systems to provide public access to water fluoridation information stored in WFRS. Oral Health Maps generates maps showing fluoridation percentages at state and county levels and provides summary data tables.<sup>†</sup> My Water's Fluoride provides public access to fluoridation information for individual community water systems.\*\* Currently, 36 states provide public access to water fluoridation information online via Oral Health Maps and My Water's Fluoride.

Attainment of the *Healthy People 2010* objective will require 1) recognition by policymakers and the public that dental caries remains an important public health problem and that fluoridation is an equitable and cost-effective method of addressing the problem, even in smaller populations where the per-capita cost of fluoridation is higher; 2) continuing science-based education of the public about the established safety of fluoridation; and 3) the political will to adopt new fluoridation systems in communities that are not served currently (10). To overcome the challenges facing fluoridation, public health professionals at the national, state, and local level will need to enhance their promotion of fluoridation and commit the necessary resources for equipment, personnel, and training.

#### Acknowledgments

This report is based, in part, on contributions from S Presson, D Apanian, Div of Oral Health, National Center for Chronic Disease Prevention and Health Promotion, CDC; B Laughlin, Alabama Dept of Environmental Management; B Whistler, Alaska

<sup>†</sup> Available at <http://apps.nccd.cdc.gov/gisdoh>.

\*\* Available at <http://apps.nccd.cdc.gov/mwfi/index.asp>.

Dept of Health; R Tuscano, Arizona Dept of Health Svcs; L Mouden, Arkansas Dept of Health; G Hoffmann, California Dept of Drinking Water and Environmental Management; D Felzien, Colorado Dept of Public Health and Environment; P Painter, Connecticut Dept of Public Health; GB McClure, Delaware Div of Public Health; H Davis, Florida Dept of Health; E Rutti-Cain, Georgia Rural Water Assn; M Greer, Hawaii Dept of Health; L Penny, Idaho Dept of Health and Welfare; R Mutzbauer, Illinois Dept of Public Health; D Cain, Indiana State Dept of Health; R Russell, Iowa Dept of Public Health; D Waldo, Kansas Dept of Health and Environment; R Murphy, Kentucky Dept for Public Health; A Laughlin, Louisiana Office of Public Health; N Reilman, Maryland Dept of the Environment; J Feinstein, Maine Dept of Human Svcs; M Foley, Massachusetts Dept of Public Health; K Philip, Michigan Dept of Environmental Quality; D Rindal, Minnesota Dept of Health; C Seed, Montana Dental Health Program; K McFarland, Nebraska Dept of Health and Human Svcs; L Cofano, Nevada State Health Div; S Kilbreath, New Jersey Dept of Health; N Martin, New Hampshire Dept of Health and Human Svcs; R Romero, New Mexico Dept of Health; J Reuther, New York State Dept of Health; G Stewart, North Dakota Dept of Health; C Wolf, Ohio Dept of Health; M Morgan, Oklahoma State Dept of Health; D Leland, Oregon Dept of Human Svcs; K Chenosky, Pennsylvania Dept of Health; J Swallow, Rhode Island Dept of Health; D Boston, South Carolina Dept of Health and Environmental Control; J Ellingson, South Dakota Dept of Health; W Wells, Tennessee Dept of Environment and Conservation; T Napier, Texas Dept of Health; S Steed, Utah Dept of Health; S Arthur, Vermont Dept of Health Dental Svcs; L Syrop, Virginia Dept of Health; R Pedlar, Washington Dept of Health; K Cobb, West Virginia Bur for Public Health; W LeMay, Wisconsin Div of Public Health.

## References

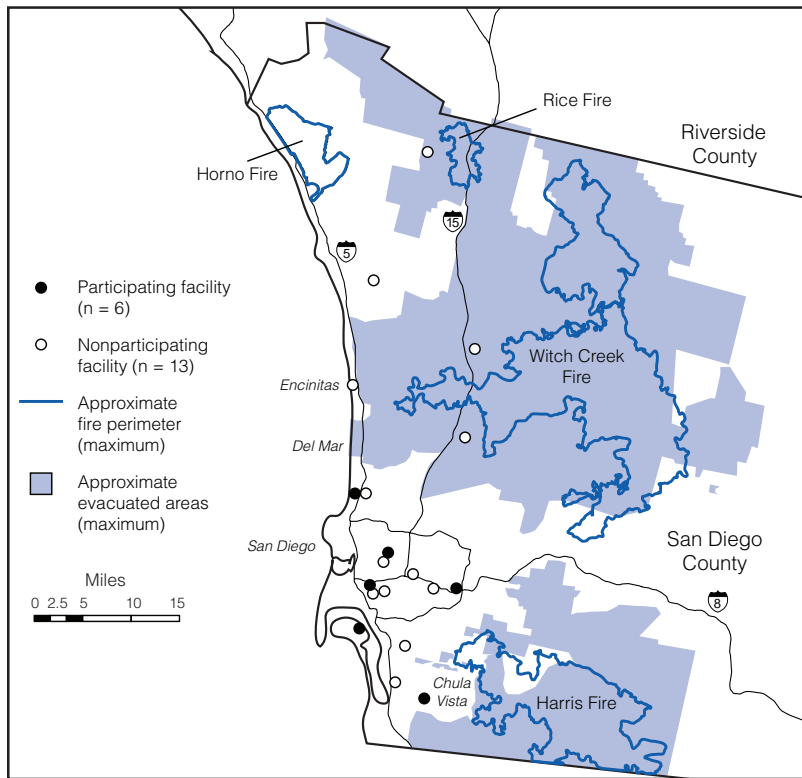
1. US Department of Health and Human Services. Oral health in America: a report of the Surgeon General. Rockville, MD: US Department of Health and Human Services, National Institute of Dental and Craniofacial Research, National Institutes of Health; 2000. Available at <http://silk.nih.gov/public/hck1ocv.@www.surgeon.fullrpt.pdf>.
2. Truman BI, Gooch BF, Sulemana I, et al. Reviews of evidence on interventions to prevent dental caries, oral and pharyngeal cancers, and sports-related craniofacial injuries. *Am J Prev Med* 2002;23 (suppl 1):21–54.
3. Griffin SO, Jones K, Tomar SL. An economic evaluation of community water fluoridation. *J Publ Health Dent* 2001;61:78–86.
4. CDC. Populations receiving optimally fluoridated public drinking water—United States, 2000. *MMWR* 2002;51:144–7.
5. US Department of Health and Human Services. Oral health; 21-9: increase the proportion of the U.S. population served by community water systems with optimally fluoridated water. In: *Healthy people 2010: understanding and improving health*. 2nd ed. Washington, DC: US Department of Health and Human Services; 2000. Available at <http://www.healthypeople.gov/document/html/volume2/21oral.htm>.
6. US Census Bureau. Population, population change and estimated components of population change: April 1, 2000 to July 1, 2007. Washington, DC: US Census Bureau; 2007. Available at: <http://www.census.gov/popest/datasets.html>.
7. Crall JJ. Rethinking prevention. *Pediatr Dent* 2006;28:96–101;192–8.
8. Griffin SO, Regnier E, Griffin PM, Huntley V. Effectiveness of fluoride in preventing caries in adults. *J Dent Res* 2007;86:410–5.
9. CDC. Fact sheet on questions about bottled water and fluoride. Atlanta, GA: US Department of Health and Human Services, CDC; 2008. Available at [http://www.cdc.gov/fluoridation/fact\\_sheets/bottled\\_water.htm](http://www.cdc.gov/fluoridation/fact_sheets/bottled_water.htm).
10. CDC. Building capacity to fluoridate: literature review. Atlanta, GA: US Department of Health and Human Services, CDC; 2003. Available at [http://www.cdc.gov/fluoridation/pdf/fluoride\\_campaign\\_lit\\_review.doc](http://www.cdc.gov/fluoridation/pdf/fluoride_campaign_lit_review.doc).

## Monitoring Health Effects of Wildfires Using the BioSense System — San Diego County, California, October 2007

During October 21–26, 2007, wildfires consumed hundreds of thousands of acres and forced the evacuation of more than 300,000 persons in San Diego County, California (1). During large-scale emergencies, data are needed to assess health effects, plan response, and evaluate response adequacy (2). This report describes some of the health effects of the wildfires based on data from the CDC BioSense system, which receives emergency department (ED) patient chief complaint information and physician diagnosis codes from six hospitals in San Diego County. Analysis of these data indicated that ED visits for respiratory disease, especially those associated with dyspnea and asthma, increased during a 5-day fire period compared with the preceding 20 weekdays. For the six hospitals combined, visits for dyspnea increased from 48.6 to 72.6 per day, and visits with diagnoses of asthma increased from 21.7 to 40.4 per day. Local, state, and federal public health personnel should continue collaborative efforts to expand and monitor automated surveillance systems so that timely information is available during emergencies.

BioSense is a national system that enables receipt, analysis, and visualization of electronic health-care data for public health use (3). Data are available simultaneously to local, state, and federal public health officials and hospital personnel through BioSense, which can be accessed through the CDC Secure Data Network. Hospitals are included in the system based on their ability to supply appropriate electronic data and their willingness to participate. In October 2007, data were being received from EDs at 413 nonfederal hospitals in the United States, including six of the 19 hospitals in San Diego County. These six hospitals were located near but outside the fire and evacuation areas (Figure 1). Data received by BioSense included age, sex, free-text patient-reported chief complaints, and diagnosis codes (usually *International Classification of*

**FIGURE 1. Hospitals participating and not participating in BioSense,\* approximate fire perimeters, and approximate evacuated areas — San Diego County, California, October 20–29, 2007**



\* BioSense is a national automated surveillance system operated by CDC that enables receipt, analysis, and visualization of electronic health-care data for public health use.

*Diseases, Ninth Revision, Clinical Modification* [ICD-9-CM] codes). As part of standard procedure, diagnoses are assigned to one or more disease indicators, including 11 general syndromes (e.g., respiratory\* and gastrointestinal) and 78 more specific subsyndromes (e.g., asthma and dyspnea), on the basis of reference tables (4,5). Free-text chief complaints are parsed automatically for specified keywords and assigned to these syndromes and subsyndromes. Median times from patient visit to receipt of ED data at CDC are 8 hours (interquartile range [IQR] = 0.8–20.8 hours) for chief complaints and 5 days (IQR = 1.5–8.5 days) for diagnosis codes. Once received at CDC, these data are processed and made available in BioSense within 2–3 hours. The daily count of

\* Syndrome definitions were created by a multi-agency working group to assist in ICD-9-CM code-based surveillance for bioterrorism-associated diseases (definitions available at <http://www.bt.cdc.gov/surveillance/syndromedef/word/syndromedefinitions.doc>). The respiratory syndrome includes codes for the following: acute infection of the upper and/or lower respiratory tract (from the oropharynx to the lungs; includes otitis media); specific diagnosis of acute respiratory tract infection, such as pneumonia attributed to parainfluenza virus; acute nonspecific diagnosis of respiratory tract infection, such as sinusitis, pharyngitis, and laryngitis; and acute nonspecific symptoms of respiratory tract infection, such as cough, stridor, shortness of breath, and throat pain.

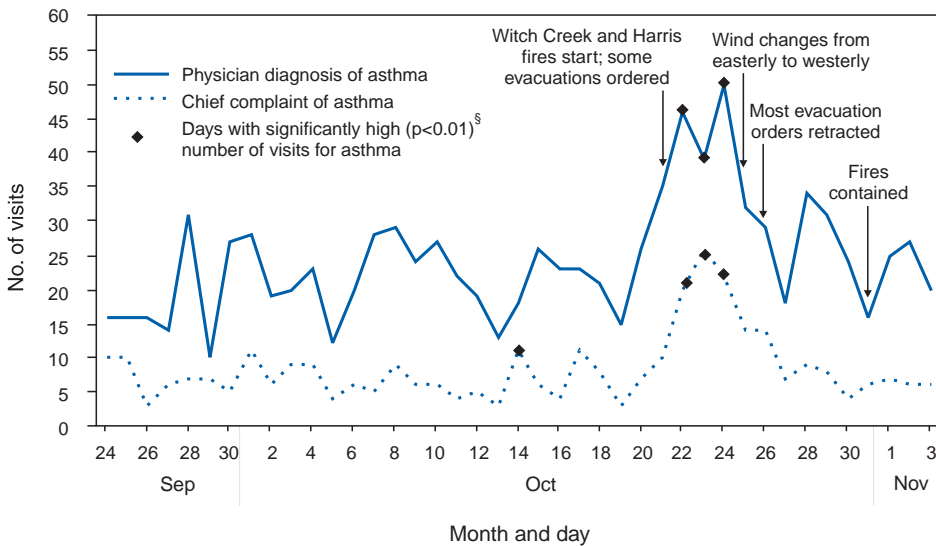
visits meeting the criteria for each disease indicator is displayed on time-series graphs and compared with the number expected based on a 7-day moving average. A modification of the Early Aberration Reporting System (EARS) C-2 algorithm (5,6) is used to determine statistical significance, which is expressed as a recurrence interval (i.e., the number of expected days between counts as high as those observed). For this report, single-day visit counts with a recurrence interval of  $\geq 100$  days (analogous to  $p \leq 0.01$ ) were considered statistically significant.

During October 22–30, 2007, CDC personnel monitored BioSense for evidence of health effects possibly related to the wildfires in San Diego County. These data were provided to applicable federal, state, and local public health officials and emergency managers each day. CDC personnel monitored for increases in respiratory disease, gastrointestinal diseases (multiple boil-water orders had been issued), burns, and cardiac dysrhythmias (which have been associated with carbon monoxide and cyanide toxicity from smoke inhalation). Because increased activity was found primarily for respiratory diseases, data in this report are limited to the respiratory syndrome and five respiratory subsyndromes (asthma, bronchitis, chest pain, cough, and dyspnea).

The fire period was defined as October 22–26, 2007. First, BioSense was examined for evidence of single-day increases in the daily count of visits with selected disease indicators among ED patients during the fire period. Next, pooled visit counts from the 5-day fire period were compared with a 20-day pre-fire period. Because the fire period included only weekdays, and because the average number of ED visits differed on weekdays compared with weekends, the 20 weekdays during September 24–October 19 were used as the pre-fire period. For the pooled data, the number of visits for a given indicator per hospital per day (normalized by dividing by the mean number of visits for the indicator per day for the hospital during both periods combined) in the pre-fire versus fire period were compared by using the nonparametric Kruskal-Wallis test.

Visits for and diagnoses of asthma increased on October 22, the day after the wildfire started, were significantly high for 3 days (October 22–24), and declined on October 25 after a change in wind speed and direction improved conditions (Figure 2). Asthma chief complaints also were significantly high on 1 day (October 14) during the pre-fire period. Peak asthma chief complaint and diagnosis visit counts were higher during the fire period than they had been in >6 months. Data

**FIGURE 2. Number of emergency department visits, by chief complaint\* and diagnosis† of asthma — six hospitals, San Diego, California, September 22–November 17, 2007**



\*Free-text chief complaints are parsed for specified keywords and assigned to syndromes and subsyndromes.

†Based on *International Classification of Diseases, Ninth Revision, Clinical Modification* code 493 (asthma).

§Statistical significance determined using a modification of the Early Aberration Reporting System (EARS) C-2 algorithm.

from individual hospitals indicated that asthma chief complaints and diagnosis visit counts were each high on at least 1 day during the fire period at four of the six hospitals.

Analysis of pooled chief complaint visit counts indicated that the mean number of ED visits per day was 653.0 during the pre-fire period, compared with 680.8 during the fire period ( $p=0.2$ ). Comparison of chief complaint visit counts in the pre-fire versus fire periods showed significant increases for the respiratory syndrome (from 134.1 to 163.2 mean visits per day; 29.2 excess visits per day), asthma (12.4 excess visits per day), and dyspnea (24.1 excess visits per day) (Table). Comparison of diagnosis codes during the pre-fire versus fire periods showed increases in visits for the respiratory syndrome, asthma, and dyspnea, with 30.3, 18.7, and 7.3 excess visits per day, respectively.

**TABLE. Number of emergency department visits for selected respiratory disease indicators — six hospitals, San Diego, California, September 24–October 26, 2007**

Disease indicator	Pre-fire period*		Fire period†		Excess no. of visits per day§	p-value¶
	No. of visits	Mean per day	No. of visits	Mean per day		
<b>Chief complaint**</b>						
Respiratory syndrome††	2,681	134.1	816	163.2	29.2	<0.001
Asthma	136	6.8	96	19.2	12.4	<0.001
Bronchitis	8	0.4	4	0.8	0.4	0.2
Chest pain	1,240	62.0	302	60.4	-1.6	0.4
Cough	314	15.7	73	14.6	-1.1	0.5
Dyspnea	971	48.6	363	72.6	24.1	<0.001
<b>Diagnosis codes§§</b>						
Respiratory syndrome	2,355	117.8	740	148.0	30.3	<0.001
Asthma	434	21.7	202	40.4	18.7	0.001
Bronchitis	247	12.4	82	16.4	4.1	0.3
Chest pain	904	45.2	223	44.6	-0.6	0.9
Cough	175	8.8	42	8.4	-0.4	0.9
Dyspnea	326	16.3	118	23.6	7.3	<0.001

\* Pre-fire period includes the 20 weekdays during September 24–October 19, 2007.

† Fire period includes October 22–26, 2007.

§ Mean number of visits during fire period minus mean number of visits during pre-fire period.

¶ Kruskal-Wallis test.

\*\* Free-text chief complaints are parsed for specified keywords and assigned to syndromes and subsyndromes.

†† Syndrome definitions were created by a multi-agency working group to assist in *International Classification of Diseases, Ninth Revision, Clinical Modification* (ICD-9-CM) code-based surveillance for bioterrorism-associated diseases (definitions available at <http://www.bt.cdc.gov/surveillance/syndromedef/word/syndromedefinitions.doc>). The respiratory syndrome includes codes for the following: acute infection of the upper and/or lower respiratory tract (from the oropharynx to the lungs; includes otitis media); specific diagnosis of acute respiratory tract infection, such as pneumonia attributed to parainfluenza virus; acute nonspecific diagnosis of respiratory tract infection, such as sinusitis, pharyngitis, and laryngitis; and acute nonspecific symptoms of respiratory tract infection, such as cough, stridor, shortness of breath, and throat pain.

§§ ICD-9-CM codes included in the respiratory syndrome available at <http://www.bt.cdc.gov/surveillance/syndromedef/word/syndromedefinitions.doc>. Other codes are as follows: asthma, 493; bronchitis, 466 and 490; chest pain, 786.5; cough, 786.2; and dyspnea, 786.0.

**Reported by:** M Ginsberg, J Johnson, San Diego County Health and Human Svcs Agency, J Tokars, C Martin, R English, G Rainisch, W Lei, P Hicks, J Burkholder, M Miller, K Crosby, K Akaka, Div of Emergency Preparedness and Response, National Center for Public Health Informatics; A Stock, Div of Environmental Hazards and Health Effects, National Center for Environmental Health; D Sugerman, EIS Officer, CDC.

**Editorial Note:** Community smoke exposures resulting from wildfires have been associated with increased ED and hospital admissions for chronic obstructive pulmonary disease, bronchitis, asthma, and chest pain (7–9). Therefore, CDC recommends that persons with asthma take precautions to minimize exposure to wildfire smoke (10). In the San Diego County wildfires of October 2007, substantial numbers of adverse health effects likely were avoided by timely evacuation orders (implemented with an emergency telephone notification system and follow-up visits by law enforcement personnel to ensure compliance), school closures, health communications, and other measures implemented by local authorities. On October 25, a decrease in wind speed allowed containment of the fires, and a change in wind direction blew smoke away from populated areas. Nevertheless, this analysis indicated increased ED visits for respiratory indicators, especially asthma, in a subset of San Diego hospitals.

Postdisaster health surveillance often is implemented on an ad hoc basis, sometimes employing inconsistent methods and event definitions (2). If available in the affected area, existing electronic biosurveillance systems can provide data immediately (i.e., without the delay experienced when an ad hoc system is initiated) and provide data from the predisaster period for comparison.

The findings in this report are subject to at least two limitations. First, whether the six nonfederal San Diego County hospitals that participate in BioSense are representative of other area hospitals is uncertain. Second, misclassifications might have occurred because of limitations of patient-reported chief complaints, which are subjective, and diagnosis codes, which have well-recognized limitations. Moreover, the same patient might have made more than one visit on different days, and the same visit might have been classified as showing more than one disease indicator (e.g., a visit with a chief complaint of “asthma and shortness of breath” would have been included in both the asthma and dyspnea categories, but counts from these two categories were analyzed separately and not added together).

BioSense is undergoing several changes that will expand its population coverage, provide greater access to additional data types (e.g., microbiology laboratory data), increase capabilities for collaboration with state and local health departments, and upgrade its technical capabilities. A current strength is

the ability to provide simple measures of illnesses, such as asthma associated with wildfires, which can be derived from chief complaints or diagnoses and affect large populations. The same data streams can be used to monitor infections, injuries, and chronic diseases; conduct routine surveillance (e.g., for seasonal influenza); and monitor adverse health effects during large gatherings (e.g., the World Series) and during disasters. These systems can be valuable to state and local officials who are primarily responsible for emergency response and disaster management. Especially when an incident involves multiple jurisdictions, having an aggregate, centralized view of real-time data analyzed and presented with consistent methods can be useful to assess health effects, evaluate response adequacy, and determine whether additional action is required.

#### References

1. County of San Diego. 2007 San Diego County firestorms after action report. San Diego, CA: County of San Diego, Office of Emergency Services; 2007. Available at [http://www.sdcountry.ca.gov/oes/docs/2007\\_SanDiego\\_Fire\\_AAR\\_Main\\_Document\\_FINAL.pdf](http://www.sdcountry.ca.gov/oes/docs/2007_SanDiego_Fire_AAR_Main_Document_FINAL.pdf).
2. CDC. Morbidity surveillance after Hurricane Katrina—Arkansas, Louisiana, Mississippi, and Texas, September 2005. *MMWR* 2006;55:727–31.
3. CDC. BioSense—a national initiative for early detection and quantification of public health emergencies. *MMWR* 2004;53(Suppl):53–5.
4. CDC. Syndrome definitions for diseases associated with critical bioterrorism-associated agents, October 23, 2003. Atlanta, GA: US Department of Health and Human Services, CDC; 2003. Available at <http://www.bt.cdc.gov/surveillance/syndromedef/word/syndromedefinitions.doc>.
5. CDC. BioSense real-time hospital data user guide, application version 2.08. Atlanta, GA: US Department of Health and Human Services, CDC; 2007. Available at [http://www.cdc.gov/biosense/files/cdc\\_biosense\\_biosense\\_hospital\\_data\\_user\\_guide\\_v2.11.doc](http://www.cdc.gov/biosense/files/cdc_biosense_biosense_hospital_data_user_guide_v2.11.doc).
6. Hutwagner L, Thompson W, Seeman GM, Treadwell T. The bioterrorism preparedness and response Early Aberration Reporting System (EARS). *J Urban Hlth* 2003;80(2 Suppl 1):i89–96.
7. Sutherland ER, Make BJ, Vedal S, et al. Wildfire smoke and respiratory symptoms in patients with chronic obstructive pulmonary disease. *J Allergy Clin Immunol* 2005;115:420–2.
8. CDC. Surveillance of morbidity during wildfires—central Florida, 1998. *MMWR* 1999;48:78–9.
9. CDC. Leveraging syndromic surveillance during the San Diego wildfires, 2003. *MMWR* 2005;54(Suppl):190.
10. CDC. Wildfires fact sheet. Atlanta, GA: US Department of Health and Human Services, CDC; 2007. Available at <http://www.bt.cdc.gov/disasters/wildfires/facts.asp>.

## Disparities in Secondhand Smoke Exposure — United States, 1988–1994 and 1999–2004

No level of exposure to secondhand smoke (SHS) is safe (1). Breathing SHS can cause heart disease and lung cancer in nonsmoking adults and increases the risk for sudden infant



death syndrome, acute respiratory infections, middle-ear disease, and exacerbation of asthma in children (1–3). In the United States, exposure to SHS declined approximately 70% from the late 1980s through 2002, most likely reflecting widespread implementation of laws and policies prohibiting smoking in indoor workplaces and public places during this period (1,4). Although the major sources of SHS exposure for non-smoking adults are the home and workplace, the primary source of SHS exposure for children is the home (1); therefore, eliminating smoking in workplaces and public places is less likely to reduce children's exposure to SHS. This report examines changes in the prevalence of self-reported SHS exposure at home and changes in any exposure, as measured by serum cotinine (a biologic indicator of SHS exposure), in nonsmoking children, adolescents, and adults. The analysis was conducted using data from the 1988–1994 and 1999–2004 National Health and Nutrition Examination Surveys (NHANES). The results indicated that self-reported SHS exposure at home and SHS exposure as measured by serum cotinine declined significantly (i.e., by 51.2% and 44.7%, respectively) in the U.S. population from 1988–1994 to 1999–2004; however, the decline was smaller for persons aged 4–11 years and 12–19 years. These results underscore the need to continue surveillance of SHS exposure and to focus on strategies to reduce children's SHS exposure.

NHANES consists of a series of cross-sectional surveys designed to monitor the health and nutritional status of the U.S. civilian, noninstitutionalized population. Participants were selected through a complex, multistage probability design and completed a household interview and standardized physical examination in specially equipped mobile examination centers. Subgroups of the population, including blacks and Mexican Americans, were oversampled to provide reliable estimates for these groups. For persons aged  $\geq 4$  years in 1988–1994 and aged  $\geq 3$  years in 1999–2004, blood was collected by venipuncture and serum cotinine levels were measured in blood samples using a high performance liquid chromatography mass spectrometry method at CDC. Serum cotinine levels indicate exposure to nicotine during the past 3–4 days (4).

The study sample was limited to nonsmokers aged  $\geq 4$  years. Nonsmokers were defined as respondents with serum cotinine  $\leq 10$  ng/mL. Respondents aged  $\geq 12$  years were excluded if, at the examination, they reported tobacco or nicotine use during the past 5 days. Serum cotinine measures were available for 83.7% (N = 22,377) of examined persons aged  $\geq 4$  years in 1988–1994 and for 89.9% (N = 22,994) in 1999–2004.

The final sample size for nonsmokers was 17,261 in 1988–1994 and 17,931 in 1999–2004. Exposure to SHS in nonsmokers was defined as a detectable serum cotinine level of

$\geq 0.05$  ng/mL (i.e., the laboratory limit of detection during 1988–1994 and 1999–2000). Serum cotinine was not used as a continuous variable because approximately 50% of results were below the laboratory limit of detection in the study population during 1999–2000. Exposure to SHS inside the home was defined as the presence of at least one household member who smoked cigarettes inside the home.\*

The percentage of persons with self-reported home SHS exposure, the percentage with detectable serum cotinine, stratified by age group (4–11 years, 12–19 years, and  $\geq 20$  years), race/ethnicity (non-Hispanic white, non-Hispanic black, and Mexican American), and other demographic characteristics were calculated. Data analyses accounted for the complex survey design, differential probabilities of sample selection, nonresponse, and sample noncoverage. Differences between population subgroups and between periods were evaluated using a univariate t-statistic. All significance tests were two-sided using  $p < 0.05$  as the level of statistical significance.

The percentage of the U.S. nonsmoking population aged  $\geq 4$  years with self-reported home SHS exposure declined from 20.9% in 1988–1994 to 10.2% in 1999–2004 (Table). Similarly, the percentage of the nonsmoking population with detectable serum cotinine declined significantly, from 83.9% in 1988–1994 to 46.4% in 1999–2004. The decline was statistically significant within all subgroups of the study population for both measures of exposure.

The percentage of nonsmokers with detectable serum cotinine was uniformly high for all age groups during 1988–1994. The percentage decreased for all age groups during 1999–2004, and remained highest for those aged 4–11 years (60.5%) and those aged 12–19 years (55.4%) compared with those aged  $\geq 20$  years (42.2%). The decline in the prevalence of detectable serum cotinine was 28.1% for those aged 4–11 years, 35.1% for those aged 12–19 years, and 49.5% for those aged  $\geq 20$  years.

During 1988–1994, non-Hispanic blacks were more likely than non-Hispanic whites and Mexican Americans to have detectable serum cotinine (93.7%, 83.2%, and 77.7%, respectively). However, by 1999–2004, the gap had increased between non-Hispanic blacks with detectable serum cotinine (70.5%) and non-Hispanic whites (43.0%) and Mexican Americans (40.0%). The percentage of nonsmokers with detectable serum cotinine was inversely associated with family income in both periods, and the decline over time was smaller

\* As determined by responses to questions in NHANES 1988–1994 (“Does anyone who lives here smoke cigarettes in the home?”) and NHANES 1999–2004 (“Does anyone who lives here smoke cigarettes, cigars, or pipes anywhere inside this home?”) and for each household member who smokes: “How many cigarettes per day do you/does [PERSON] usually smoke anywhere inside the home?”).

**TABLE. Percentage of nonsmoking persons\* who had home exposure to secondhand smoke† and who had detectable serum cotinine levels ( $\geq 0.05$  ng/mL) — National Health and Nutrition Examination Survey (NHANES), United States, 1988–1994 and 1999–2004§**

Characteristic	Sample size		Home exposure				Detectable serum cotinine				
	NHANES		NHANES		Decrease (%)	NHANES		NHANES		Decrease (%)	
	1988–1994	1999–2004	1988–1994	1999–2004		1988–1994	1999–2004	1988–1994	1999–2004		
<b>Total</b>	17,261	17,931	20.9 (19.1–22.8)	10.2 (9.2–11.2)	51.2	83.9 (81.4–86.2)	46.4 (43.0–50.0)	44.7			
<b>Sex</b>											
Male	7,734	8,203	21.0 (19.0–23.3)	10.5 (9.5–11.5)	50.0	87.1 (84.8–89.1) <sup>¶</sup>	51.2 (47.4–54.9) <sup>¶</sup>	41.2			
Female	9,527	9,728	20.8 (18.7–23.1)	10.0 (8.9–11.2)	51.9	81.3 (78.1–84.1) <sup>¶</sup>	42.5 (39.1–46.0) <sup>¶</sup>	47.7			
<b>Age group (yrs)</b>											
4–11	3,926	3,395	38.2 (34.4–42.2)**	23.8 (20.7–27.2)**	37.7	84.5 (81.0–87.5)	60.5 (55.7–65.2)**	28.1			
12–19	2,508	5,127	35.4 (31.8–39.2)**	19.5 (17.2–22.0)**	44.9	85.4 (81.3–88.7)	55.4 (50.6–60.0)**	35.1			
$\geq 20$ (referent)	10,827	9,409	14.7 (13.2–16.4)	5.9 (5.3–6.7)	59.8	83.5 (80.8–85.9)	42.2 (38.7–45.7)	49.5			
<b>Race/Ethnicity<sup>††</sup></b>											
Mexican American	5,595	5,415	21.9 (19.1–25.0)**	6.8 (5.4–8.6)**	68.5	77.7 (72.7–82.1)**	40.0 (35.1–45.1)	48.5			
White, non-Hispanic (referent)	6,171	6,860	18.6 (16.3–21.1)	9.8 (8.6–11.2)	47.3	83.2 (80.3–85.7)	43.0 (38.8–47.3)	48.3			
Black, non-Hispanic	4,710	4,206	30.7 (28.2–33.3)**	15.4 (13.7–17.2)**	49.8	93.7 (92.1–95.0)**	70.5 (67.0–73.7)**	24.8			
<b>PIR<sup>§§</sup></b>											
0–1.3 (referent)	5,911	5,841	31.5 (27.8–35.5)	17.9 (15.2–21.0)	43.2	87.6 (84.6–90.0)	62.7 (57.2–67.8)	28.4			
1.3–3.0	5,671	5,274	22.7 (20.0–25.7)**	11.7 (10.3–13.4)**	48.4	84.0 (80.8–86.8)	48.7 (44.6–53.0)**	42.0			
$>3.0$	4,143	5,582	14.0 (11.7–16.6)**	5.9 (5.1–7.0)**	57.9	81.8 (78.2–84.3)**	37.4 (34.0–41.0)**	54.3			

\* Respondents with serum cotinine  $\leq 10$  ng/mL, and for respondents aged  $\geq 12$  years, those who at the time of venipuncture reported no tobacco or nicotine product use in the past 5 days.

† The presence of at least one household member who smokes in the home.

§ The differences between 1988–1994 and 1999–2004 in the percentage with home exposure to tobacco smoke and the percentage with detectable serum cotinine levels were statistically significant for the total population and all population subgroups shown in the table.

¶ Confidence interval.

\*\*  $p < 0.05$ , by t-test for difference from referent.

†† Estimates for persons of other racial/ethnic groups are not included here but are included in all other estimates in the table.

§§ Poverty income ratio, defined as the ratio of family income to the U.S. Census Bureau poverty threshold accounting for family size; it was classified as low income ( $\leq 1.3$ ), middle income (1.3–3.0), and high income ( $>3.0$ ).

for the lowest income group compared with the higher income groups.

Although the percentage decrease in home SHS exposure from 1988–1994 to 1999–2004 was seen for persons of all ages, it was smaller in children, especially those aged 4–11 years, compared with those aged  $\geq 20$  years. For SHS exposure in the home, the declines were 37.7%, 44.9%, and 59.8% among those aged 4–11 years, 12–19 years, and  $\geq 20$  years, respectively.

During both periods, prevalence of SHS exposure in the home was highest among non-Hispanic blacks and for persons with lower incomes. For both periods, self-reported home SHS exposure was not significantly different in males than in females, but a higher percentage of males had detectable serum cotinine than did females.

**Reported by:** SE Schober PhD, C Zhang, DJ Brody, MPH, Div for National Health and Nutrition Examination Survey, National Center for Health Statistics; C Marano, DrPH, EIS Officer, CDC.

**Editorial Note:** This report assesses changes in exposure to SHS among nonsmokers from self-reported information about cigarette smoke exposure in the home and by serum cotinine levels. Based on both measures, SHS exposure decreased markedly from 1988–1994 to 1999–2004 for the total U.S. population and major population subgroups. However, despite the decreases in SHS exposure, 46.4% of U.S. nonsmokers still had detectable levels of serum cotinine during 1999–2004,

indicating that SHS exposure remains an important public health problem.

Documented reductions in SHS exposure since the late 1980s have been attributed to widespread implementation of laws and policies restricting or eliminating exposure in workplaces and public places during this period (4,5). Additionally, the prevalence of cigarette smoking has decreased during this period, from 28% in 1988 to 21% in 2004 (6), which likely reduced SHS exposure, particularly in the home.

A recent study reported that the proportion of households that have rules against smoking in the home has increased since the early 1990s, from 43% in 1992–1993 to 72% in 2003 (7). That parallels the decline in the prevalence of SHS exposure in the home reported in this study. However, a higher prevalence of SHS exposure was still evident in the groups aged 4–11 years and 12–19 years compared with the group aged  $\geq 20$  years during 1999–2004, a pattern that has been noted previously (4). Additionally, the disparity in exposure between those aged 4–11 years and 12–19 years compared with those aged  $\geq 20$  years has widened since the early 1990s. The major source of SHS exposure for those aged 4–11 years is from parental smoking in the home (8).

This analysis determined that the decrease in home SHS exposure from 1988–1994 to 1999–2004 was similar for non-Hispanic blacks and non-Hispanic whites. For SHS exposure as measured by serum cotinine, however, the relative decline

was nearly twice as large for non-Hispanic whites compared with non-Hispanic blacks. Previous studies have noted that non-Hispanic blacks have higher serum cotinine levels than non-Hispanic whites, both for smokers and nonsmokers, and that differences in nicotine metabolism might partially explain this disparity (4). At least one study that assessed multiple sources of SHS exposure reported that among nonsmokers, non-Hispanic blacks had higher levels of SHS exposure than other groups, which explained the higher serum cotinine levels in non-Hispanic blacks (9). Information about other sources of exposure to SHS is needed to interpret the disparity between non-Hispanic whites and non-Hispanic blacks in the percentage with detectable serum cotinine in the NHANES surveys.

The findings in this report are subject to at least three limitations. First, the assessment of self-reported home SHS exposure is based only on information about household members who smoke inside the home. Information about smoking inside the home by visitors was not collected. Second, information is not available about potential SHS exposure in locations outside of the home, including automobiles, workplaces, public places, and other homes. Information about smoker behaviors to protect nonsmokers from SHS exposure in the home also was not obtained. Finally, measurement of serum cotinine levels in nonsmokers only provides a measure of overall SHS exposure, regardless of the sources of exposure.

The U.S. Surgeon General has concluded that protecting nonsmokers from SHS exposure can only be accomplished by completely eliminating smoking in indoor places (1). SHS exposure among nonsmokers has declined markedly during the past 2 decades, largely through implementation of laws and policies that prohibit smoking in workplaces and public places (4,6). Despite this success in reducing SHS exposure, the results of this study underscore the need for ongoing prevention efforts to reduce SHS exposure with strategies that focus on protection for those at greatest risk (10).

## References

1. US Department of Health and Human Services. The health consequences of involuntary exposure to tobacco smoke: a report of the Surgeon General. Atlanta, GA: US Department of Health and Human Services, CDC; 2006. Available at [http://www.cdc.gov/tobacco/data\\_statistics/sgr/sgr\\_2006/index.htm](http://www.cdc.gov/tobacco/data_statistics/sgr/sgr_2006/index.htm).
2. California Environmental Protection Agency. Proposed identification of environmental tobacco smoke as a toxic air contaminant. Sacramento, CA: Office of Environmental Health Hazard Assessment; 2005. Available at <http://www.arb.ca.gov/regact/ets2006/ets2006.htm>.
3. World Health Organization International Agency for Research on Cancer. Monographs on the evaluation of carcinogenic risks to humans. Volume 83: tobacco smoke and involuntary smoking. Lyon, France: IARC Press; 2004.
4. Pirkle JL, Bernert JT, Caudill SP, Sosnoff CS, Pechacek TF. Trends in the exposure of nonsmokers in the U.S. population to secondhand smoke. *Environ Health Perspect* 2006;114:853–8.
5. Pickett MS, Schober SE, Brody DJ, Curtin LR, Giovino GA. Smoke-free laws and secondhand smoke exposure in US non-smoking adults, 1999–2002. *Tob Control* 2006;15:302–7.
6. National Center for Health Statistics. Health, United States, 2006. With chartbook on trends in the health of Americans. Hyattsville, MD: US Department of Health and Human Services, CDC, National Center for Health Statistics; 2006. Available at <http://www.cdc.gov/nchs/data/hs/hs06.pdf>.
7. CDC. State-specific prevalence of smoke-free home rules—United States, 1992–2003. *MMWR* 2007;56:501–4.
8. Jarvis MJ, Goddard E, Higgins V, Feyerabend C, Bryant A, Cook DG. Children's exposure to passive smoking in England since the 1980s: cotinine evidence from population surveys. *BMJ* 2000;321:343–5.
9. Wagenknecht LE, Manolio TA, Sidney S, Burke GL, Haley NJ. Environmental tobacco smoke exposure as determined by cotinine in black and white young adults: the CARDIA study. *Environ Res* 1993;63:39–46.
10. CDC. Best practices for comprehensive tobacco control programs—2007. Atlanta, GA: US Department of Health and Human Services, CDC; 2007. Available at [http://www.cdc.gov/tobacco/tobacco\\_control\\_programs/stateandcommunity/best\\_practices](http://www.cdc.gov/tobacco/tobacco_control_programs/stateandcommunity/best_practices).

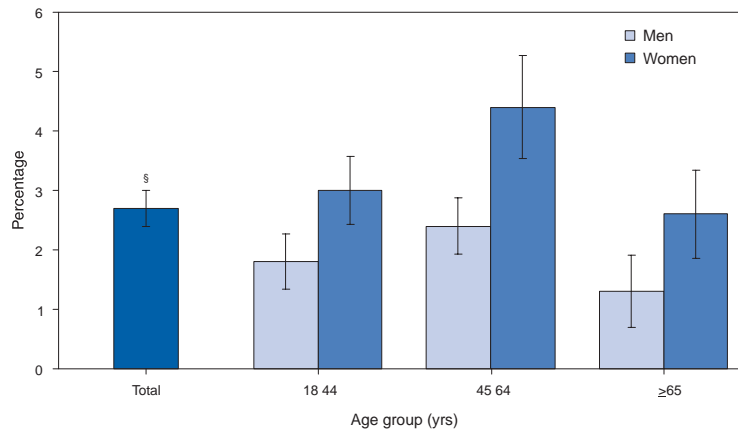
## Errata: Vol. 57, No. SS-5

In the *MMWR Surveillance Summary* (Vol. 57, No. SS-5), “Malaria Surveillance — United States, 2006,” errors occurred in Figure 2 on page 35. The title for the figure should read, “Number of imported malaria cases and estimated relative case rates\* among U.S. **residents**, by country of acquisition — United States, 2006,” and the fourth sentence of the footnote should read, “The number of cases of malaria among U.S. **resident** travelers attributable to each country is displayed next to the country name in parentheses.”

# QuickStats

FROM THE NATIONAL CENTER FOR HEALTH STATISTICS

## Percentage of Adults With Symptoms of Serious Psychological Distress,\* by Age Group and Sex — National Health Interview Survey, United States, 2007†



\* Results are based on responses to the questions “During the past 30 days, how often did you feel 1) so sad that nothing could cheer you up, 2) nervous, 3) restless or fidgety, 4) hopeless, 5) that everything was an effort, or 6) worthless?” Response codes for the six items for each person were summed to yield a point value on a 0–24-point scale. A value of 13 or more was used to define serious psychological distress.

† Estimates are based on household interviews of a sample of the civilian, noninstitutionalized U.S. population.

§ 95% confidence interval.

In 2007, among all adults  $\geq 18$  years, women were significantly more likely than men to have experienced symptoms of serious psychological distress during the past 30 days. By age group, adults aged 45–64 years were more likely than adults aged  $\geq 65$  years to have experienced these symptoms. Overall, approximately 3% of the U.S. adult population had experienced symptoms of serious psychological distress during the past 30 days.

**SOURCE:** Heyman KM, Schiller JS, Barnes P. Early release of selected estimates based on data from the 2007 National Health Interview Survey. Hyattsville, MD: US Department of Health and Human Services, CDC, National Center for Health Statistics; 2008. Available at <http://www.cdc.gov/nchs/about/major/nhis/released200806.htm>.

**TABLE I. Provisional cases of infrequently reported notifiable diseases (<1,000 cases reported during the preceding year) — United States, week ending July 5, 2008 (27th Week)\***

Disease	Current week	Cum 2008	5-year weekly average†	Total cases reported for previous years					States reporting cases during current week (No.)
				2007	2006	2005	2004	2003	
Anthrax	—	—	—	1	1	—	—	—	
Botulism:									
foodborne	—	4	0	32	20	19	16	20	
infant	—	33	2	85	97	85	87	76	
other (wound & unspecified)	—	6	1	27	48	31	30	33	
Brucellosis	—	39	2	130	121	120	114	104	
Chancroid	—	23	1	23	33	17	30	54	
Cholera	—	—	0	7	9	8	6	2	
Cyclosporiasis§	8	53	9	92	137	543	160	75	NY (1), FL (7)
Diphtheria	—	—	—	—	—	—	—	1	
Domestic arboviral diseases§,¶:									
California serogroup	—	—	4	53	67	80	112	108	
eastern equine	—	—	0	4	8	21	6	14	
Powassan	—	—	0	7	1	1	1	—	
St. Louis	—	—	0	9	10	13	12	41	
western equine	—	—	—	—	—	—	—	—	
Ehrlichiosis/Anaplasmosis§,¶,¶¶:									
<i>Ehrlichia chaffeensis</i>	3	101	17	828	578	506	338	321	MD (2), FL (1)
<i>Ehrlichia ewingii</i>	—	—	—	—	—	—	—	—	
<i>Anaplasma phagocytophilum</i>	1	37	23	834	646	786	537	362	FL (1)
undetermined	1	3	9	337	231	112	59	44	TN (1)
<i>Haemophilus influenzae</i> ,††									
invasive disease (age <5 yrs):									
serotype b	—	17	0	23	29	9	19	32	
nonserotype b	—	92	3	197	175	135	135	117	
unknown serotype	2	119	3	181	179	217	177	227	NC (1), WA (1)
Hansen disease§	2	35	2	101	66	87	105	95	CA (2)
Hantavirus pulmonary syndrome§	—	7	1	32	40	26	24	26	
Hemolytic uremic syndrome, postdiarrheal§	3	62	6	292	288	221	200	178	OK (1), ID (2)
Hepatitis C viral, acute	14	367	16	849	766	652	720	1,102	NC (4), FL (7), TN (2), CA (1)
HIV infection, pediatric (age <13 yrs)§§	—	—	4	—	—	380	436	504	
Influenza-associated pediatric mortality§,¶¶	—	86	1	77	43	45	—	N	
Listeriosis	7	246	19	808	884	896	753	696	NY (1), VA (1), NC (1), FL (2), WA (1), CA (1)
Measles***	—	113	2	43	55	66	37	56	
Meningococcal disease, invasive†††:									
A, C, Y, & W-135	2	158	4	323	318	297	—	—	FL (1), WA (1)
serogroup B	—	88	4	166	193	156	—	—	
other serogroup	—	19	0	34	32	27	—	—	
unknown serogroup	4	366	11	553	651	765	—	—	NC (1), FL (1), WA (1), OR (1)
Mumps	1	239	17	799	6,584	314	258	231	WA (1)
Novel influenza A virus infections	—	—	—	1	N	N	N	N	
Plague	—	1	0	7	17	8	3	1	
Poliomyelitis, paralytic	—	—	—	—	—	1	—	—	
Poliovirus infection, nonparalytic§	—	—	—	—	N	N	N	N	
Psittacosis§	—	4	0	12	21	16	12	12	
Q fever§,§§§ total:	—	46	3	171	169	136	70	71	
acute	—	42	—	—	—	—	—	—	
chronic	—	4	—	—	—	—	—	—	
Rabies, human	—	—	0	1	3	2	7	2	
Rubella¶¶¶	—	7	0	12	11	11	10	7	
Rubella, congenital syndrome	—	—	—	—	1	1	—	1	
SARS-CoV§,****	—	—	—	—	—	—	—	8	

—: No reported cases. N: Not notifiable. Cum: Cumulative year-to-date counts.

\* Incidence data for reporting years 2007 and 2008 are provisional, whereas data for 2003, 2004, 2005, and 2006 are finalized.

† Calculated by summing the incidence counts for the current week, the 2 weeks preceding the current week, and the 2 weeks following the current week, for a total of 5 preceding years. Additional information is available at <http://www.cdc.gov/epo/dphsi/phs/files/5yearweeklyaverage.pdf>.

§ Not notifiable in all states. Data from states where the condition is not notifiable are excluded from this table, except in 2007 and 2008 for the domestic arboviral diseases and influenza-associated pediatric mortality, and in 2003 for SARS-CoV. Reporting exceptions are available at <http://www.cdc.gov/epo/dphsi/phs/infdis.htm>.

¶ Includes both neuroinvasive and nonneuroinvasive. Updated weekly from reports to the Division of Vector-Borne Infectious Diseases, National Center for Zoonotic, Vector-Borne, and Enteric Diseases (ArboNET Surveillance). Data for West Nile virus are available in Table II.

¶¶ The names of the reporting categories changed in 2008 as a result of revisions to the case definitions. Cases reported prior to 2008 were reported in the categories: Ehrlichiosis, human monocytic (analogous to *E. chaffeensis*); Ehrlichiosis, human granulocytic (analogous to *Anaplasma phagocytophilum*), and Ehrlichiosis, unspecified, or other agent (which included cases unable to be clearly placed in other categories, as well as possible cases of *E. ewingii*).

†† Data for *H. influenzae* (all ages, all serotypes) are available in Table II.

§§ Updated monthly from reports to the Division of HIV/AIDS Prevention, National Center for HIV/AIDS, Viral Hepatitis, STD, and TB Prevention. Implementation of HIV reporting influences the number of cases reported. Updates of pediatric HIV data have been temporarily suspended until upgrading of the national HIV/AIDS surveillance data management system is completed. Data for HIV/AIDS, when available, are displayed in Table IV, which appears quarterly.

¶¶¶ Updated weekly from reports to the Influenza Division, National Center for Immunization and Respiratory Diseases. Eighty-four cases occurring during the 2007–08 influenza season have been reported.

\*\*\* No measles cases were reported for the current week.

††† Data for meningococcal disease (all serogroups) are available in Table II.

§§§ In 2008, Q fever acute and chronic reporting categories were recognized as a result of revisions to the Q fever case definition. Prior to that time, case counts were not differentiated with respect to acute and chronic Q fever cases.

¶¶¶¶ No rubella cases were reported for the current week.

\*\*\*\* Updated weekly from reports to the Division of Viral and Rickettsial Diseases, National Center for Zoonotic, Vector-Borne, and Enteric Diseases.

**TABLE I. (Continued) Provisional cases of infrequently reported notifiable diseases (<1,000 cases reported during the preceding year) — United States, week ending July 5, 2008 (27th Week)\***

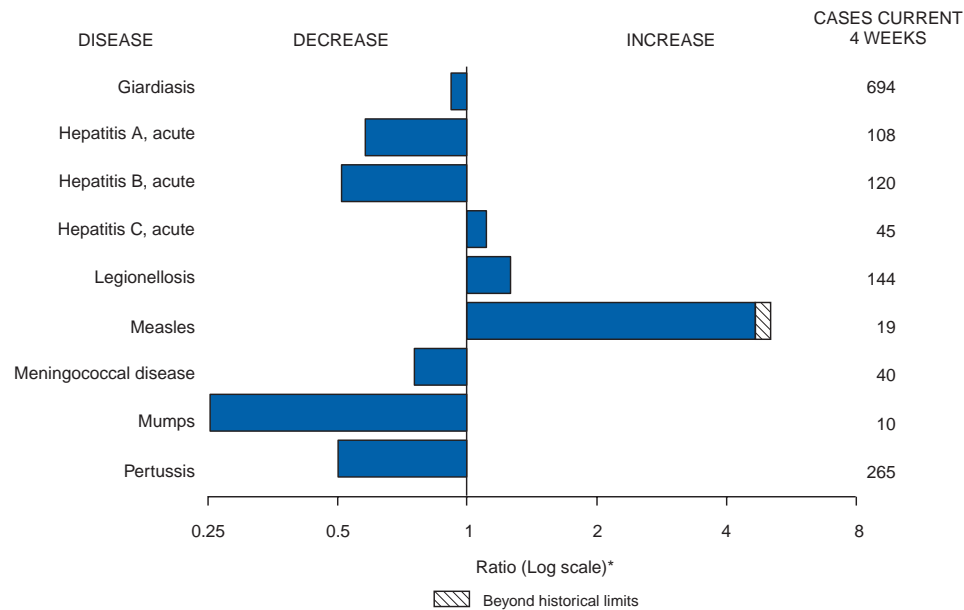
Disease	Current week	Cum 2008	5-year weekly average†	Total cases reported for previous years					States reporting cases during current week (No.)
				2007	2006	2005	2004	2003	
Smallpox§	—	—	—	—	—	—	—	—	
Streptococcal toxic-shock syndrome§	1	82	2	132	125	129	132	161	CT (1)
Syphilis, congenital (age <1 yr)	—	93	8	428	349	329	353	413	
Tetanus	—	3	1	27	41	27	34	20	
Toxic-shock syndrome (staphylococcal)§	—	31	2	92	101	90	95	133	
Trichinellosis	—	4	0	5	15	16	5	6	
Tularemia	1	26	6	137	95	154	134	129	TN (1)
Typhoid fever	3	177	7	433	353	324	322	356	MD (1), WA (1), CA (1)
Vancomycin-intermediate <i>Staphylococcus aureus</i> §	—	4	0	28	6	2	—	N	
Vancomycin-resistant <i>Staphylococcus aureus</i> §	—	—	—	2	1	3	1	N	
Vibriosis (noncholera <i>Vibrio</i> species infections)§	6	95	4	445	N	N	N	N	MD (1), VA (1), GA (1), FL (3)
Yellow fever	—	—	—	—	—	—	—	—	

—: No reported cases. N: Not notifiable. Cum: Cumulative year-to-date counts.

\* Incidence data for reporting years 2007 and 2008 are provisional, whereas data for 2003, 2004, 2005, and 2006 are finalized.

† Calculated by summing the incidence counts for the current week, the 2 weeks preceding the current week, and the 2 weeks following the current week, for a total of 5 preceding years. Additional information is available at <http://www.cdc.gov/epo/dphsi/phs/files/5yearweeklyaverage.pdf>.

§ Not notifiable in all states. Data from states where the condition is not notifiable are excluded from this table, except in 2007 and 2008 for the domestic arboviral diseases and influenza-associated pediatric mortality, and in 2003 for SARS-CoV. Reporting exceptions are available at <http://www.cdc.gov/epo/dphsi/phs/infdis.htm>.

**FIGURE I. Selected notifiable disease reports, United States, comparison of provisional 4-week totals July 5, 2008, with historical data**

\* Ratio of current 4-week total to mean of 15 4-week totals (from previous, comparable, and subsequent 4-week periods for the past 5 years). The point where the hatched area begins is based on the mean and two standard deviations of these 4-week totals.

**Notifiable Disease Data Team and 122 Cities Mortality Data Team**

Patsy A. Hall

Deborah A. Adams

Rosaline Dhara

Willie J. Anderson

Michael S. Wodajo

Lenée Blanton

Pearl C. Sharp

**TABLE II. Provisional cases of selected notifiable diseases, United States, weeks ending July 5, 2008, and July 7, 2007 (27th Week)\***

Reporting area	Chlamydia <sup>†</sup>					Coccidioidomycosis					Cryptosporidiosis				
	Current week	Previous 52 weeks		Cum 2008	Cum 2007	Current week	Previous 52 weeks		Cum 2008	Cum 2007	Current week	Previous 52 weeks		Cum 2008	Cum 2007
		Med	Max				Med	Max				Med	Max		
<b>United States</b>	9,129	21,437	28,892	532,530	556,072	67	126	341	3,337	4,025	40	83	975	1,757	1,660
<b>New England</b>	536	682	1,516	17,860	17,735	—	0	1	1	2	1	5	17	113	133
Connecticut	232	206	1,093	5,007	5,178	N	0	0	N	N	—	0	15	15	42
Maine <sup>§</sup>	39	48	67	1,292	1,330	N	0	0	N	N	—	1	5	12	14
Massachusetts	244	313	660	8,875	8,112	N	0	0	N	N	—	2	11	31	40
New Hampshire	1	39	73	1,018	1,019	—	0	1	1	2	—	1	4	27	18
Rhode Island <sup>§</sup>	—	58	98	1,445	1,567	—	0	0	—	—	—	0	3	4	5
Vermont <sup>§</sup>	20	17	36	223	529	N	0	0	N	N	1	1	4	24	14
<b>Mid. Atlantic</b>	1,878	2,774	4,974	74,927	72,772	—	0	0	—	—	11	12	120	239	200
New Jersey	170	406	524	9,949	11,086	N	0	0	N	N	—	0	8	10	11
New York (Upstate)	406	561	2,177	13,947	13,191	N	0	0	N	N	5	5	20	77	59
New York City	1,012	987	3,147	29,958	26,006	N	0	0	N	N	—	2	8	38	35
Pennsylvania	290	800	1,031	21,073	22,489	N	0	0	N	N	6	6	103	114	95
<b>E.N. Central</b>	670	3,474	4,373	83,796	92,682	—	1	3	21	16	2	22	134	418	374
Illinois	—	1,000	1,711	20,649	26,540	N	0	0	N	N	—	2	13	36	45
Indiana	268	384	656	10,580	10,986	N	0	0	N	N	—	2	41	69	26
Michigan	402	754	1,223	23,012	19,857	—	0	2	14	12	2	4	11	85	74
Ohio	—	868	1,530	20,596	25,218	—	0	1	7	4	—	6	60	113	89
Wisconsin	—	378	615	8,959	10,081	N	0	0	N	N	—	6	60	115	140
<b>W.N. Central</b>	475	1,228	1,693	32,420	31,977	—	0	77	—	6	8	18	125	309	247
Iowa	—	163	251	4,249	4,412	N	0	0	N	N	1	4	61	66	53
Kansas	159	163	529	4,716	4,129	N	0	0	N	N	—	1	15	20	32
Minnesota	—	263	373	6,338	6,850	—	0	77	—	—	—	5	34	81	47
Missouri	208	468	576	12,360	11,784	—	0	1	—	6	5	3	14	73	45
Nebraska <sup>§</sup>	19	93	247	2,426	2,648	N	0	0	N	N	2	2	24	45	17
North Dakota	45	33	65	900	889	N	0	0	N	N	—	0	51	2	1
South Dakota	44	53	81	1,431	1,265	N	0	0	N	N	—	1	16	22	52
<b>S. Atlantic</b>	2,547	3,966	7,609	97,749	107,760	—	0	1	2	2	12	19	65	354	374
Delaware	58	65	150	1,913	1,744	—	0	0	—	—	—	0	4	7	3
District of Columbia	—	117	202	3,041	3,048	—	0	1	—	—	—	0	2	3	1
Florida	966	1,304	1,557	35,110	26,701	N	0	0	N	N	5	8	35	160	165
Georgia	4	636	1,338	4,699	21,280	N	0	0	N	N	—	4	14	105	83
Maryland <sup>§</sup>	348	469	683	11,602	10,522	—	0	1	2	2	—	0	3	11	13
North Carolina	163	215	4,783	10,305	15,571	N	0	0	N	N	4	0	18	15	43
South Carolina <sup>§</sup>	614	463	3,070	14,000	14,244	N	0	0	N	N	3	1	15	22	29
Virginia <sup>§</sup>	391	508	1,062	15,558	13,023	N	0	0	N	N	—	1	6	24	33
West Virginia	3	59	96	1,521	1,627	N	0	0	N	N	—	0	5	7	4
<b>E.S. Central</b>	1,039	1,538	2,394	40,947	42,530	—	0	0	—	—	2	4	64	54	73
Alabama <sup>§</sup>	27	479	605	11,495	12,951	N	0	0	N	N	—	1	14	18	24
Kentucky	232	223	361	5,738	4,015	N	0	0	N	N	2	1	40	12	22
Mississippi	369	343	1,048	9,777	11,180	N	0	0	N	N	—	1	11	6	13
Tennessee <sup>§</sup>	411	515	715	13,937	14,384	N	0	0	N	N	—	1	18	18	14
<b>W.S. Central</b>	310	2,715	4,426	71,435	60,832	—	0	1	1	1	1	6	37	71	93
Arkansas <sup>§</sup>	190	236	455	7,246	4,558	N	0	0	N	N	1	1	8	14	13
Louisiana	—	376	851	7,909	9,595	—	0	1	1	1	—	0	4	4	27
Oklahoma	120	235	416	5,968	6,403	N	0	0	N	N	—	1	11	20	15
Texas <sup>§</sup>	—	1,809	3,923	50,312	40,276	N	0	0	N	N	—	3	28	33	38
<b>Mountain</b>	438	1,385	1,836	30,167	38,010	48	90	170	2,325	2,492	3	10	567	164	125
Arizona	50	475	679	10,701	12,498	48	88	168	2,275	2,412	—	1	4	21	21
Colorado	37	299	488	5,135	9,062	N	0	0	N	N	1	2	26	38	35
Idaho <sup>§</sup>	111	55	233	1,685	1,929	N	0	0	N	N	—	2	71	29	7
Montana <sup>§</sup>	13	49	363	1,496	1,451	N	0	0	N	N	—	1	7	21	11
Nevada <sup>§</sup>	144	184	416	4,970	4,877	—	1	7	32	35	—	0	6	6	5
New Mexico <sup>§</sup>	—	138	561	3,252	4,832	—	0	3	13	16	—	2	9	25	35
Utah	83	115	209	2,917	2,722	—	0	7	4	29	2	1	484	16	3
Wyoming <sup>§</sup>	—	11	34	11	639	—	0	1	1	—	—	0	8	8	8
<b>Pacific</b>	1,236	3,363	4,676	83,229	91,774	19	29	217	987	1,506	—	2	20	35	41
Alaska	54	94	129	2,357	2,512	N	0	0	N	N	—	0	2	1	1
California	974	2,806	4,115	72,739	71,373	19	29	217	987	1,506	—	0	0	—	—
Hawaii	1	110	152	2,812	2,949	N	0	0	N	N	—	0	4	1	—
Oregon <sup>§</sup>	207	181	402	5,208	4,930	N	0	0	N	N	—	2	16	33	40
Washington	—	139	498	113	10,010	N	0	0	N	N	—	0	0	—	—
American Samoa	—	0	22	70	73	N	0	0	N	N	N	0	0	N	N
C.N.M.I.	—	—	—	—	—	—	—	—	—	—	—	—	—	—	—
Guam	—	11	26	102	448	—	0	0	—	—	—	0	0	—	—
Puerto Rico	116	116	612	3,665	3,997	N	0	0	N	N	N	0	0	N	N
U.S. Virgin Islands	—	7	21	292	103	—	0	0	—	—	—	0	0	—	—

C.N.M.I.: Commonwealth of Northern Mariana Islands.

U: Unavailable. —: No reported cases. N: Not notifiable. Cum: Cumulative year-to-date counts. Med: Median. Max: Maximum.

\* Incidence data for reporting years 2007 and 2008 are provisional. Data for HIV/AIDS, AIDS, and TB, when available, are displayed in Table IV, which appears quarterly.

† Chlamydia refers to genital infections caused by *Chlamydia trachomatis*.

§ Contains data reported through the National Electronic Disease Surveillance System (NEDSS).

TABLE II. (Continued) Provisional cases of selected notifiable diseases, United States, weeks ending July 5, 2008, and July 7, 2007 (27th Week)\*

Reporting area	Giardiasis					Gonorrhea					<i>Haemophilus influenzae</i> , invasive All ages, all serotypes <sup>†</sup>				
	Current week	Previous 52 weeks		Cum 2008	Cum 2007	Current week	Previous 52 weeks		Cum 2008	Cum 2007	Current week	Previous 52 weeks		Cum 2008	Cum 2007
		Med	Max				Med	Max				Med	Max		
<b>United States</b>	136	299	1,158	6,883	7,496	2,743	6,366	8,913	148,699	177,894	21	46	173	1,466	1,402
<b>New England</b>	6	24	58	501	562	94	96	227	2,528	2,839	1	3	12	83	103
Connecticut	—	6	18	144	155	61	46	199	1,100	1,054	—	0	9	19	27
Maine <sup>§</sup>	4	3	10	61	67	1	2	7	48	61	—	0	3	8	7
Massachusetts	—	9	27	157	238	31	45	127	1,134	1,388	—	1	5	36	53
New Hampshire	—	1	4	46	10	1	2	6	64	84	—	0	2	6	10
Rhode Island <sup>§</sup>	—	1	15	34	28	—	6	13	168	221	—	0	2	7	5
Vermont <sup>§</sup>	2	3	9	59	64	—	1	5	14	31	1	0	3	7	1
<b>Mid. Atlantic</b>	26	61	131	1,322	1,346	483	632	1,028	16,566	18,426	9	9	31	285	270
New Jersey	—	7	15	132	192	78	113	174	2,795	3,129	—	1	7	39	45
New York (Upstate)	20	23	111	505	457	87	129	545	3,123	3,048	5	3	22	89	71
New York City	1	16	29	358	417	252	176	525	5,018	5,502	1	1	6	47	52
Pennsylvania	5	14	29	327	280	66	226	394	5,630	6,747	3	3	9	110	102
<b>E.N. Central</b>	5	50	96	983	1,224	240	1,321	1,638	29,305	37,340	—	7	28	201	212
Illinois	—	12	34	227	376	—	389	589	6,459	9,617	—	2	7	52	68
Indiana	N	0	0	N	N	92	157	296	4,276	4,545	—	1	20	45	31
Michigan	5	11	21	210	312	148	302	657	8,477	8,165	—	0	3	9	16
Ohio	—	16	36	381	335	—	341	685	7,527	11,576	—	2	6	81	61
Wisconsin	—	9	26	165	201	—	120	214	2,566	3,437	—	1	4	14	36
<b>W.N. Central</b>	10	26	621	711	450	161	326	440	8,215	10,223	1	3	24	107	74
Iowa	3	5	24	128	99	—	31	56	683	987	—	0	1	2	1
Kansas	—	3	11	43	62	46	42	130	1,146	1,154	—	0	4	10	8
Minnesota	—	0	575	191	6	—	62	92	1,462	1,775	—	0	21	22	26
Missouri	5	9	23	206	191	95	169	235	4,072	5,383	—	1	6	49	28
Nebraska <sup>§</sup>	2	4	8	98	52	9	25	51	667	733	1	0	3	17	10
North Dakota	—	0	36	14	6	—	2	7	48	56	—	0	2	7	1
South Dakota	—	1	6	31	34	11	5	10	137	135	—	0	0	—	—
<b>S. Atlantic</b>	26	55	102	1,173	1,328	967	1,443	3,072	33,387	40,780	8	11	29	383	362
Delaware	1	1	6	20	18	20	22	44	595	702	—	0	1	3	5
District of Columbia	—	1	5	21	35	—	47	104	1,177	1,203	—	0	1	5	1
Florida	15	24	47	576	572	349	473	616	11,973	11,278	5	3	10	102	94
Georgia	4	11	28	231	285	1	246	561	1,752	8,590	—	2	8	88	72
Maryland <sup>§</sup>	5	5	18	103	121	84	122	237	3,084	3,217	2	2	5	63	55
North Carolina	N	0	0	N	N	88	136	1,949	4,377	7,043	1	1	9	41	39
South Carolina <sup>§</sup>	1	3	7	56	40	207	190	836	5,066	5,149	—	1	7	30	34
Virginia <sup>§</sup>	—	8	39	141	242	217	137	486	5,000	3,132	—	1	22	41	48
West Virginia	—	1	8	25	15	1	16	34	363	466	—	0	3	10	14
<b>E.S. Central</b>	4	10	23	193	217	367	565	945	14,796	16,304	—	3	8	80	82
Alabama <sup>§</sup>	—	5	11	102	116	15	196	287	4,585	5,602	—	0	2	14	20
Kentucky	N	0	0	N	N	88	81	161	2,223	1,508	—	0	1	2	4
Mississippi	N	0	0	N	N	131	132	401	3,609	4,132	—	0	2	11	6
Tennessee <sup>§</sup>	4	4	16	91	101	133	170	261	4,379	5,062	—	2	6	53	52
<b>W.S. Central</b>	4	7	41	111	160	131	1,019	1,355	24,177	25,283	—	2	29	65	59
Arkansas <sup>§</sup>	2	3	11	59	63	87	80	167	2,335	2,140	—	0	3	3	5
Louisiana	—	1	14	13	45	—	181	384	3,586	5,666	—	0	2	3	3
Oklahoma	2	3	35	39	52	44	94	171	2,240	2,463	—	1	21	54	46
Texas <sup>§</sup>	N	0	0	N	N	—	643	1,102	16,016	15,014	—	0	3	5	5
<b>Mountain</b>	17	30	68	590	693	91	238	330	5,369	6,981	1	5	14	186	158
Arizona	—	3	11	51	94	7	80	130	1,598	2,610	—	2	11	83	62
Colorado	10	11	26	228	224	43	59	91	1,496	1,725	1	1	4	35	37
Idaho <sup>§</sup>	2	3	19	68	58	4	4	19	73	128	—	0	4	8	4
Montana <sup>§</sup>	—	2	8	31	38	—	1	48	47	47	—	0	1	2	—
Nevada <sup>§</sup>	—	3	6	52	71	26	45	130	1,244	1,202	—	0	1	11	7
New Mexico <sup>§</sup>	—	2	5	39	60	—	28	104	640	814	—	0	4	20	26
Utah	5	6	32	107	128	11	12	36	271	415	—	1	6	27	19
Wyoming <sup>§</sup>	—	1	3	14	20	—	0	5	—	40	—	0	1	—	3
<b>Pacific</b>	38	58	185	1,299	1,516	209	633	809	14,356	19,718	1	2	7	76	82
Alaska	—	2	5	35	31	7	10	24	248	264	—	0	4	11	5
California	18	38	91	888	1,047	193	555	683	13,151	16,533	—	0	4	15	29
Hawaii	1	1	5	16	42	3	11	22	291	350	—	0	2	13	6
Oregon <sup>§</sup>	6	9	19	207	196	6	24	63	649	569	—	1	4	34	41
Washington	13	8	87	153	200	—	24	97	17	2,002	1	0	3	3	1
American Samoa	—	0	0	—	—	—	0	1	3	3	—	0	0	—	—
C.N.M.I.	—	—	—	—	—	—	—	—	—	—	—	—	—	—	—
Guam	—	0	1	—	1	—	1	12	43	69	—	0	1	—	—
Puerto Rico	—	2	31	39	147	7	5	23	135	168	—	0	0	—	2
U.S. Virgin Islands	—	0	0	—	—	—	1	5	55	26	N	0	0	N	N

C.N.M.I.: Commonwealth of Northern Mariana Islands.

U: Unavailable. —: No reported cases. N: Not notifiable. Cum: Cumulative year-to-date counts. Med: Median. Max: Maximum.

\* Incidence data for reporting years 2007 and 2008 are provisional.

<sup>†</sup> Data for *H. influenzae* (age <5 yrs for serotype b, nonserotype b, and unknown serotype) are available in Table I.<sup>§</sup> Contains data reported through the National Electronic Disease Surveillance System (NEDSS).



TABLE II. (Continued) Provisional cases of selected notifiable diseases, United States, weeks ending July 5, 2008, and July 7, 2007 (27th Week)\*

Reporting area	Hepatitis (viral, acute), by type <sup>†</sup>										Legionellosis				
	A					B									
	Current week	Previous 52 weeks		Cum 2008	Cum 2007	Current week	Previous 52 weeks		Cum 2008	Cum 2007	Current week	Previous 52 weeks		Cum 2008	Cum 2007
	Med	Max				Med	Max				Med	Max			
<b>United States</b>	26	53	171	1,263	1,402	12	75	259	1,627	2,193	28	50	117	961	929
<b>New England</b>	3	2	7	53	55	—	1	6	25	63	—	3	14	37	50
Connecticut	3	0	3	14	8	—	0	5	9	24	—	1	4	12	8
Maine <sup>§</sup>	—	0	1	4	1	—	0	2	8	3	—	0	2	1	1
Massachusetts	—	1	5	18	28	—	0	3	3	26	—	0	3	1	21
New Hampshire	—	0	2	5	10	—	0	1	1	4	—	0	2	5	1
Rhode Island <sup>§</sup>	—	0	2	11	6	—	0	3	3	5	—	0	5	14	16
Vermont <sup>§</sup>	—	0	1	1	2	—	0	1	1	1	—	0	2	4	3
<b>Mid. Atlantic</b>	2	7	18	133	216	1	9	18	192	288	21	14	37	246	256
New Jersey	—	1	6	22	66	—	2	7	36	87	—	1	13	18	31
New York (Upstate)	1	1	6	32	35	—	2	7	37	41	12	4	15	78	72
New York City	—	2	7	42	72	—	2	5	37	66	—	2	11	21	60
Pennsylvania	1	1	6	37	43	1	3	7	82	94	9	6	21	129	93
<b>E.N. Central</b>	1	6	15	144	165	—	8	18	164	256	—	11	35	191	207
Illinois	—	2	10	45	67	—	1	6	36	85	—	1	16	19	44
Indiana	—	0	4	7	4	—	0	8	19	20	—	1	7	18	16
Michigan	1	2	7	58	41	—	2	6	49	64	—	3	11	50	66
Ohio	—	1	3	22	34	—	2	7	57	71	—	4	17	100	71
Wisconsin	—	0	2	12	19	—	0	1	3	16	—	0	5	4	10
<b>W.N. Central</b>	—	5	29	167	85	2	2	9	49	60	—	2	10	47	39
Iowa	—	1	7	73	19	—	0	2	7	13	—	0	2	6	4
Kansas	—	0	3	8	3	—	0	1	3	6	—	0	1	1	5
Minnesota	—	0	23	18	42	—	0	5	4	9	—	0	6	4	5
Missouri	—	1	3	29	11	2	1	4	31	22	—	1	4	26	19
Nebraska <sup>§</sup>	—	1	5	37	6	—	0	1	4	7	—	0	2	9	3
North Dakota	—	0	2	—	—	—	0	1	—	—	—	0	2	—	—
South Dakota	—	0	1	2	4	—	0	2	—	3	—	0	1	1	3
<b>S. Atlantic</b>	12	9	17	183	243	4	16	60	431	540	3	8	28	189	188
Delaware	—	0	1	4	3	—	0	3	6	9	—	0	2	5	6
District of Columbia	—	0	0	—	—	—	0	0	—	—	—	0	1	6	7
Florida	3	3	8	76	72	2	6	12	169	177	1	3	10	73	69
Georgia	—	1	3	24	43	1	3	8	62	75	—	1	3	12	21
Maryland <sup>§</sup>	2	1	3	20	42	—	2	6	36	62	1	2	6	44	32
North Carolina	7	0	9	33	25	—	0	17	48	75	—	0	7	11	22
South Carolina <sup>§</sup>	—	0	4	6	5	—	1	6	34	37	—	0	2	5	9
Virginia <sup>§</sup>	—	1	5	17	50	1	2	16	51	76	1	1	6	28	19
West Virginia	—	0	2	3	3	—	0	30	25	29	—	0	3	5	3
<b>E.S. Central</b>	3	2	9	41	50	2	7	13	170	181	1	2	8	58	46
Alabama <sup>§</sup>	—	0	4	4	8	—	2	5	46	64	—	0	1	5	5
Kentucky	—	0	2	14	9	—	2	5	49	30	1	1	3	30	22
Mississippi	2	0	1	4	6	—	0	3	17	21	—	0	1	1	—
Tennessee <sup>§</sup>	1	1	6	19	27	2	2	8	58	66	—	1	4	22	19
<b>W.S. Central</b>	—	5	55	111	101	—	17	131	332	428	—	2	23	31	45
Arkansas <sup>§</sup>	—	0	1	4	6	—	1	3	18	40	—	0	2	5	6
Louisiana	—	0	3	4	16	—	1	4	20	57	—	0	2	—	2
Oklahoma	—	0	7	4	3	—	2	37	45	24	—	0	3	3	1
Texas <sup>§</sup>	—	5	53	99	76	—	11	107	249	307	—	2	18	23	36
<b>Mountain</b>	4	4	10	109	133	1	3	8	91	119	1	2	6	40	42
Arizona	2	2	6	49	95	—	1	4	23	52	1	1	5	12	9
Colorado	2	0	3	24	17	—	0	3	12	18	—	0	2	3	10
Idaho <sup>§</sup>	—	0	3	15	2	—	0	2	4	6	—	0	1	2	4
Montana <sup>§</sup>	—	0	2	—	4	—	0	1	—	—	—	0	1	2	1
Nevada <sup>§</sup>	—	0	1	3	7	1	1	3	21	28	—	0	2	6	5
New Mexico <sup>§</sup>	—	0	3	14	4	—	0	2	7	9	—	0	1	3	5
Utah	—	0	2	2	2	—	0	5	21	4	—	0	3	12	5
Wyoming <sup>§</sup>	—	0	1	2	2	—	0	1	3	2	—	0	0	—	3
<b>Pacific</b>	1	13	51	322	354	2	9	30	173	258	2	4	18	122	56
Alaska	—	0	1	2	2	—	0	2	8	4	—	0	1	1	—
California	1	11	42	263	315	2	6	19	120	189	2	3	14	95	44
Hawaii	—	0	1	4	5	—	0	2	3	7	—	0	1	4	1
Oregon <sup>§</sup>	—	1	3	20	13	—	1	4	23	35	—	0	2	8	3
Washington	—	1	7	33	19	—	1	9	19	23	—	0	3	14	8
American Samoa	—	0	0	—	—	—	0	0	—	14	N	0	0	N	N
C.N.M.I.	—	—	—	—	—	—	—	—	—	—	—	—	—	—	—
Guam	—	0	0	—	—	—	0	1	—	2	—	0	0	—	—
Puerto Rico	—	0	4	11	42	—	1	5	22	41	—	0	1	1	3
U.S. Virgin Islands	—	0	0	—	—	—	0	0	—	—	—	0	0	—	—

C.N.M.I.: Commonwealth of Northern Mariana Islands.

U: Unavailable. —: Not reported cases. N: Not notifiable. Cum: Cumulative year-to-date counts. Med: Median. Max: Maximum.

<sup>†</sup> Incidence data for reporting years 2007 and 2008 are provisional.<sup>‡</sup> Data for acute hepatitis C, viral are available in Table I.<sup>§</sup> Contains data reported through the National Electronic Disease Surveillance System (NEDSS).

TABLE II. (Continued) Provisional cases of selected notifiable diseases, United States, weeks ending July 5, 2008, and July 7, 2007 (27th Week)\*

Reporting area	Lyme disease					Malaria					Meningococcal disease, invasive <sup>†</sup> All serogroups				
	Current week	Previous 52 weeks		Cum 2008	Cum 2007	Current week	Previous 52 weeks		Cum 2008	Cum 2007	Current week	Previous 52 weeks		Cum 2008	Cum 2007
		Med	Max				Med	Max				Med	Max		
<b>United States</b>	255	317	1,627	5,262	10,508	14	21	136	392	561	6	19	52	631	645
<b>New England</b>	3	28	675	344	3,573	—	1	35	10	31	—	0	3	16	32
Connecticut	—	2	280	—	1,649	—	0	27	5	1	—	0	1	1	5
Maine <sup>§</sup>	—	6	61	70	50	—	0	2	—	3	—	0	1	3	5
Massachusetts	—	5	280	28	1,376	—	0	3	2	20	—	0	3	12	15
New Hampshire	1	10	96	207	444	—	0	2	1	7	—	0	0	—	3
Rhode Island <sup>§</sup>	—	0	77	—	1	—	0	8	—	—	—	0	1	—	1
Vermont <sup>§</sup>	2	2	9	39	53	—	0	2	2	—	—	0	1	—	3
<b>Mid. Atlantic</b>	219	170	662	3,269	3,827	1	6	18	86	153	—	2	6	69	76
New Jersey	—	32	220	524	1,613	—	0	7	—	31	—	0	1	3	10
New York (Upstate)	176	63	453	1,073	760	1	1	8	14	28	—	0	3	20	24
New York City	—	1	27	4	149	—	3	9	57	81	—	0	2	14	16
Pennsylvania	43	54	293	1,668	1,305	—	1	4	15	13	—	1	5	32	26
<b>E.N. Central</b>	2	5	221	45	1,086	—	2	7	52	74	—	3	9	94	95
Illinois	—	0	16	2	77	—	1	6	23	38	—	1	3	28	39
Indiana	—	0	7	3	13	—	0	1	2	5	—	0	4	16	13
Michigan	2	1	5	16	17	—	0	2	8	9	—	0	2	13	16
Ohio	—	0	4	10	5	—	0	3	16	12	—	1	4	28	22
Wisconsin	—	4	201	14	974	—	0	3	3	10	—	0	2	9	5
<b>W.N. Central</b>	1	3	740	206	148	—	1	8	22	20	—	2	8	60	41
Iowa	—	1	8	18	69	—	0	1	2	2	—	0	3	11	9
Kansas	—	0	1	1	8	—	0	1	3	1	—	0	1	1	2
Minnesota	—	0	731	168	63	—	0	8	6	11	—	0	7	16	10
Missouri	1	0	3	14	5	—	0	4	6	2	—	0	3	21	13
Nebraska <sup>§</sup>	—	0	1	3	3	—	0	2	5	3	—	0	2	9	2
North Dakota	—	0	9	1	—	—	0	2	—	—	—	0	1	1	2
South Dakota	—	0	1	1	—	—	0	0	—	1	—	0	1	1	3
<b>S. Atlantic</b>	24	62	221	1,216	1,764	10	5	15	121	119	3	3	7	96	99
Delaware	15	12	34	381	338	—	0	1	1	3	—	0	1	1	1
District of Columbia	1	2	8	62	65	—	0	1	—	2	—	0	0	—	—
Florida	2	1	4	20	2	2	1	7	26	22	2	1	5	34	36
Georgia	—	0	3	3	4	—	1	3	22	17	—	0	3	12	10
Maryland <sup>§</sup>	6	30	136	556	999	2	1	5	32	34	—	0	2	10	17
North Carolina	—	0	8	2	20	4	0	7	15	13	1	0	4	9	12
South Carolina <sup>§</sup>	—	0	4	7	12	—	0	1	4	4	—	0	3	14	10
Virginia <sup>§</sup>	—	13	68	177	314	2	1	7	21	24	—	0	2	13	13
West Virginia	—	0	9	8	10	—	0	1	—	—	—	0	1	3	—
<b>E.S. Central</b>	2	1	6	21	30	—	0	3	7	18	—	1	6	36	34
Alabama <sup>§</sup>	—	0	3	8	9	—	0	1	3	3	—	0	2	4	7
Kentucky	—	0	2	1	2	—	0	1	3	4	—	0	2	7	6
Mississippi	—	0	1	1	—	—	0	1	—	1	—	0	2	9	9
Tennessee <sup>§</sup>	2	0	4	11	19	—	0	2	1	10	—	0	3	16	12
<b>W.S. Central</b>	—	1	11	25	33	—	1	64	16	46	—	2	13	64	69
Arkansas <sup>§</sup>	—	0	1	—	—	—	0	1	—	—	—	0	1	6	7
Louisiana	—	0	0	—	2	—	0	1	—	13	—	0	3	12	23
Oklahoma	—	0	1	—	—	—	0	4	2	3	—	0	5	10	14
Texas <sup>§</sup>	—	1	10	25	31	—	1	60	14	30	—	1	7	36	25
<b>Mountain</b>	—	0	3	14	15	—	1	5	13	32	—	1	4	33	45
Arizona	—	0	1	2	—	—	0	1	5	6	—	0	2	5	11
Colorado	—	0	1	2	—	—	0	2	3	12	—	0	2	8	15
Idaho <sup>§</sup>	—	0	2	4	4	—	0	2	—	—	—	0	2	2	4
Montana <sup>§</sup>	—	0	2	2	1	—	0	1	—	2	—	0	1	4	1
Nevada <sup>§</sup>	—	0	2	1	6	—	0	3	4	2	—	0	2	6	3
New Mexico <sup>§</sup>	—	0	2	2	3	—	0	1	1	1	—	0	1	4	2
Utah	—	0	1	—	1	—	0	1	—	9	—	0	2	2	7
Wyoming <sup>§</sup>	—	0	1	1	—	—	0	0	—	—	—	0	1	2	2
<b>Pacific</b>	4	4	8	122	32	3	3	10	65	68	3	4	17	163	154
Alaska	—	0	2	1	2	—	0	2	3	2	—	0	2	3	1
California	4	3	7	103	27	3	2	8	52	44	—	3	17	119	113
Hawaii	N	0	0	N	N	—	0	1	2	2	—	0	2	1	4
Oregon <sup>§</sup>	—	0	4	18	3	—	0	2	4	12	1	0	3	22	22
Washington	—	0	7	—	—	—	0	3	4	8	2	0	5	18	14
American Samoa	N	0	0	N	N	—	0	0	—	—	—	0	0	—	—
C.N.M.I.	—	—	—	—	—	—	—	—	—	—	—	—	—	—	—
Guam	—	0	0	—	—	—	0	1	1	—	—	0	0	—	—
Puerto Rico	N	0	0	N	N	—	0	1	1	1	—	0	1	2	6
U.S. Virgin Islands	N	0	0	N	N	—	0	0	—	—	—	0	0	—	—

C.N.M.I.: Commonwealth of Northern Mariana Islands.

U: Unavailable. —: No reported cases. N: Not notifiable. Cum: Cumulative year-to-date counts. Med: Median. Max: Maximum.

\* Incidence data for reporting years 2007 and 2008 are provisional.

<sup>†</sup> Data for meningococcal disease, invasive caused by serogroups A, C, Y, & W-135; serogroup B; other serogroup; and unknown serogroup are available in Table I.

<sup>§</sup> Contains data reported through the National Electronic Disease Surveillance System (NEDSS).

TABLE II. (Continued) Provisional cases of selected notifiable diseases, United States, weeks ending July 5, 2008, and July 7, 2007 (27th Week)\*

Reporting area	Pertussis					Rabies, animal					Rocky Mountain spotted fever				
	Current week	Previous 52 weeks		Cum 2008	Cum 2007	Current week	Previous 52 weeks		Cum 2008	Cum 2007	Current week	Previous 52 weeks		Cum 2008	Cum 2007
		Med	Max				Med	Max				Med	Max		
<b>United States</b>	61	149	849	3,313	4,728	54	93	177	2,123	2,972	75	29	195	479	787
<b>New England</b>	—	24	49	276	726	6	8	20	173	279	—	0	2	—	4
Connecticut	—	0	5	—	38	4	3	17	96	118	—	0	0	—	—
Maine†	—	1	5	16	37	—	1	5	25	42	N	0	0	N	N
Massachusetts	—	17	35	224	589	N	0	0	N	N	—	0	2	—	4
New Hampshire	—	1	5	12	37	2	1	4	19	23	—	0	1	—	—
Rhode Island†	—	1	25	19	4	N	0	0	N	N	—	0	0	—	—
Vermont†	—	0	6	5	21	—	2	6	33	96	—	0	0	—	—
<b>Mid. Atlantic</b>	10	21	43	376	637	11	20	32	531	496	2	1	5	29	40
New Jersey	—	1	9	3	107	—	0	0	—	—	—	0	2	2	14
New York (Upstate)	6	7	23	146	309	10	9	20	218	235	2	0	2	8	3
New York City	—	2	7	34	70	—	0	2	10	28	—	0	2	10	15
Pennsylvania	4	8	23	193	151	1	10	23	303	233	—	0	2	9	8
<b>E.N. Central</b>	2	20	189	631	896	—	3	43	43	54	—	0	3	9	28
Illinois	—	3	8	58	96	N	0	0	N	N	—	0	3	1	19
Indiana	—	0	12	22	31	—	0	1	1	6	—	0	1	1	3
Michigan	2	4	16	74	135	—	1	32	25	28	—	0	1	1	2
Ohio	—	6	176	453	411	—	1	11	17	20	—	0	3	6	4
Wisconsin	—	2	14	24	223	N	0	0	N	N	—	0	1	—	—
<b>W.N. Central</b>	7	11	142	317	340	5	4	13	69	139	10	4	34	122	147
Iowa	—	1	5	31	104	—	0	3	9	15	—	0	5	—	7
Kansas	1	1	5	24	57	—	0	7	—	76	—	0	2	—	6
Minnesota	4	0	131	99	59	—	0	6	19	10	—	0	4	—	1
Missouri	—	3	18	120	51	5	0	3	21	17	8	3	25	115	126
Nebraska†	2	1	12	38	21	—	0	0	—	—	2	0	2	6	5
North Dakota	—	0	5	1	3	—	0	8	13	11	—	0	0	—	—
South Dakota	—	0	2	4	45	—	0	2	7	10	—	0	1	1	2
<b>S. Atlantic</b>	7	13	50	327	508	32	40	73	1,086	1,183	60	7	109	165	369
Delaware	—	0	2	5	6	—	0	0	—	—	—	0	2	5	10
District of Columbia	—	0	1	2	7	—	0	0	—	—	—	0	2	2	2
Florida	7	3	9	97	119	—	0	28	71	128	—	0	3	3	4
Georgia	—	0	3	19	27	21	6	37	187	124	3	0	6	13	37
Maryland†	—	1	6	32	65	—	9	18	221	209	2	1	6	21	27
North Carolina	—	0	38	76	180	10	9	16	251	261	55	0	96	78	213
South Carolina†	—	1	22	40	45	—	0	0	—	46	—	0	4	14	29
Virginia†	—	2	11	52	50	—	12	27	297	377	—	1	8	28	45
West Virginia	—	0	12	4	9	1	0	11	59	38	—	0	3	1	2
<b>E.S. Central</b>	2	7	31	115	162	—	3	7	67	80	3	4	16	71	138
Alabama†	—	1	6	19	39	—	0	0	—	—	—	1	10	20	31
Kentucky	—	0	4	22	13	—	0	3	17	10	—	0	1	—	4
Mississippi	1	3	29	46	55	—	0	1	2	—	—	0	3	4	8
Tennessee†	1	1	4	28	55	—	2	6	48	70	3	1	10	47	95
<b>W.S. Central</b>	2	19	198	395	488	—	9	40	53	595	—	2	153	70	39
Arkansas†	—	2	17	36	99	—	1	6	36	14	—	0	15	8	7
Louisiana	—	0	2	3	13	—	0	2	—	3	—	0	2	2	1
Oklahoma	—	0	26	13	2	—	0	32	16	45	—	0	132	54	21
Texas†	2	18	179	343	374	—	4	34	1	533	—	1	8	6	10
<b>Mountain</b>	8	19	37	450	579	—	2	8	30	23	—	0	2	11	19
Arizona	—	3	10	107	150	N	0	0	N	N	—	0	2	5	3
Colorado	4	4	13	76	146	—	0	0	—	—	—	0	2	—	—
Idaho†	—	0	4	18	25	—	0	4	—	—	—	0	1	—	2
Montana†	—	0	11	58	30	—	0	3	1	5	—	0	1	2	1
Nevada†	—	0	7	17	25	—	0	2	3	3	—	0	0	—	—
New Mexico†	—	1	7	24	32	—	0	3	18	5	—	0	1	1	4
Utah	4	6	27	145	156	—	0	2	2	5	—	0	0	—	—
Wyoming†	—	0	2	5	15	—	0	4	6	5	—	0	2	3	9
<b>Pacific</b>	23	18	303	426	392	—	4	10	71	123	—	0	1	2	3
Alaska	2	1	29	46	23	—	0	4	12	36	N	0	0	N	N
California	—	8	129	168	232	—	3	8	57	83	—	0	1	1	1
Hawaii	—	0	2	4	12	—	0	0	—	—	N	0	0	N	N
Oregon†	1	2	14	72	53	—	0	3	2	4	—	0	1	1	2
Washington	20	5	169	136	72	—	0	0	—	—	N	0	0	N	N
American Samoa	—	0	0	—	—	N	0	0	N	N	N	0	0	N	N
C.N.M.I.	—	—	—	—	—	—	—	—	—	—	—	—	—	—	—
Guam	—	0	0	—	—	—	0	0	—	—	N	0	0	N	N
Puerto Rico	—	0	0	—	—	—	1	5	30	26	N	0	0	N	N
U.S. Virgin Islands	—	0	0	—	—	N	0	0	N	N	N	0	0	N	N

C.N.M.I.: Commonwealth of Northern Mariana Islands.

U: Unavailable. —: No reported cases. N: Not notifiable. Cum: Cumulative year-to-date counts. Med: Median. Max: Maximum.

\* Incidence data for reporting years 2007 and 2008 are provisional.

† Contains data reported through the National Electronic Disease Surveillance System (NEDSS).

TABLE II. (Continued) Provisional cases of selected notifiable diseases, United States, weeks ending July 5, 2008, and July 7, 2007 (27th Week)\*

Reporting area	Salmonellosis					Shiga toxin-producing <i>E. coli</i> (STEC) <sup>†</sup>					Shigellosis				
	Current week	Previous 52 weeks		Cum 2008	Cum 2007	Current week	Previous 52 weeks		Cum 2008	Cum 2007	Current week	Previous 52 weeks		Cum 2008	Cum 2007
		Med	Max				Med	Max				Med	Max		
<b>United States</b>	440	809	2,110	15,721	18,902	52	69	244	1,668	1,623	197	387	1,227	8,279	7,632
<b>New England</b>	2	19	230	615	1,304	—	4	19	69	160	—	2	22	66	150
Connecticut	—	0	201	201	431	—	0	15	15	71	—	0	20	20	44
Maine <sup>§</sup>	—	2	14	61	55	—	0	4	4	17	—	0	1	3	13
Massachusetts	—	14	60	221	658	—	2	9	24	54	—	2	8	34	81
New Hampshire	—	3	10	55	75	—	0	5	14	9	—	0	1	1	4
Rhode Island <sup>§</sup>	—	1	13	37	46	—	0	3	7	3	—	0	9	7	6
Vermont <sup>§</sup>	2	1	7	40	39	—	0	3	5	6	—	0	1	1	2
<b>Mid. Atlantic</b>	52	87	212	1,960	2,617	6	8	194	352	187	19	26	78	963	290
New Jersey	—	16	48	293	569	—	1	7	6	50	—	6	16	188	62
New York (Upstate)	33	25	73	562	618	5	3	190	284	58	19	7	36	340	53
New York City	2	22	48	482	576	—	1	5	22	19	—	9	35	377	115
Pennsylvania	17	31	83	623	854	1	2	11	40	60	—	2	65	58	60
<b>E.N. Central</b>	13	88	263	1,789	2,819	1	10	36	182	210	—	73	145	1,428	1,042
Illinois	—	24	187	454	1,082	—	1	13	18	35	—	17	37	392	279
Indiana	—	9	34	183	253	—	1	12	15	22	—	10	83	365	31
Michigan	13	16	43	334	414	1	2	12	42	35	—	1	7	34	29
Ohio	—	26	65	593	584	—	2	17	67	56	—	21	104	433	367
Wisconsin	—	13	37	225	486	—	3	16	40	62	—	10	39	204	336
<b>W.N. Central</b>	19	51	95	1,101	1,254	7	13	38	251	245	3	22	57	432	1,086
Iowa	1	8	18	186	222	—	2	13	51	57	—	2	9	69	41
Kansas	4	6	18	104	198	—	0	3	9	26	1	0	2	7	16
Minnesota	—	13	39	285	285	—	3	15	60	71	—	4	11	112	122
Missouri	5	14	29	321	336	3	3	12	78	42	2	9	37	137	825
Nebraska <sup>§</sup>	9	5	13	125	111	4	2	6	35	26	—	0	3	—	12
North Dakota	—	0	35	22	16	—	0	20	2	5	—	0	15	32	3
South Dakota	—	2	11	58	86	—	1	5	16	18	—	2	31	75	67
<b>S. Atlantic</b>	196	244	442	4,162	4,425	17	12	40	289	275	39	74	149	1,678	2,459
Delaware	—	2	8	62	64	—	0	2	7	10	—	0	2	7	5
District of Columbia	—	1	4	23	30	1	0	1	6	—	—	0	3	7	10
Florida	120	92	181	1,952	1,780	3	2	18	85	70	12	24	75	478	1,369
Georgia	33	37	86	689	706	4	1	6	29	33	12	27	47	658	881
Maryland <sup>§</sup>	16	15	44	306	338	3	2	5	48	38	2	2	7	29	49
North Carolina	10	20	228	386	600	5	1	24	33	45	3	1	12	54	35
South Carolina <sup>§</sup>	13	20	52	355	341	1	0	3	18	5	7	8	32	355	45
Virginia <sup>§</sup>	4	17	49	314	502	—	2	9	49	71	3	4	14	83	64
West Virginia	—	4	25	75	64	—	0	3	14	3	—	0	61	7	1
<b>E.S. Central</b>	25	57	144	1,045	1,234	2	5	26	113	85	34	51	178	1,032	736
Alabama <sup>§</sup>	7	15	50	284	341	—	1	19	36	21	3	13	43	230	273
Kentucky	7	9	23	170	233	1	1	12	18	26	5	9	35	179	157
Mississippi	—	14	57	279	303	—	0	2	4	3	—	17	112	227	212
Tennessee <sup>§</sup>	11	16	34	312	357	1	2	12	55	35	26	11	32	396	94
<b>W.S. Central</b>	38	98	894	1,519	1,584	1	5	25	89	117	86	56	748	1,739	938
Arkansas <sup>§</sup>	19	13	50	238	234	—	1	4	22	20	26	3	19	232	46
Louisiana	—	8	44	80	329	—	0	1	—	6	—	5	17	78	281
Oklahoma	19	11	72	267	178	1	0	14	15	12	5	3	32	54	50
Texas <sup>§</sup>	—	56	794	934	843	—	3	11	52	79	55	39	702	1,375	561
<b>Mountain</b>	33	56	87	1,378	1,174	10	8	42	182	183	11	18	40	355	372
Arizona	16	17	40	406	380	4	1	8	33	55	9	9	30	165	185
Colorado	10	11	44	398	273	2	2	17	47	32	1	2	6	43	55
Idaho <sup>§</sup>	2	3	10	77	59	2	2	16	38	35	—	0	2	5	6
Montana <sup>§</sup>	—	1	10	39	45	—	0	3	14	—	—	0	1	2	13
Nevada <sup>§</sup>	2	5	12	105	127	2	0	3	13	14	—	2	13	104	15
New Mexico <sup>§</sup>	—	6	27	193	122	—	0	5	16	22	—	1	6	22	59
Utah	3	5	17	138	126	—	1	9	17	25	1	1	5	11	14
Wyoming <sup>§</sup>	—	1	5	22	42	—	0	1	4	—	—	0	2	3	25
<b>Pacific</b>	62	110	399	2,152	2,491	8	9	40	141	161	5	30	79	586	559
Alaska	1	1	5	25	46	—	0	1	3	—	—	0	1	—	7
California	39	76	286	1,566	1,864	4	5	34	83	90	5	26	61	507	448
Hawaii	2	5	14	107	126	—	0	5	5	15	—	1	43	21	16
Oregon <sup>§</sup>	1	6	15	179	167	1	1	11	17	19	—	1	5	24	34
Washington	19	12	103	275	288	3	1	13	33	37	—	2	20	34	54
American Samoa	—	0	1	1	—	—	0	0	—	—	—	0	1	1	3
C.N.M.I.	—	—	—	—	—	—	—	—	—	—	—	—	—	—	—
Guam	—	0	2	8	11	—	0	0	—	—	—	0	3	13	10
Puerto Rico	—	12	55	172	391	—	0	1	2	—	—	0	2	5	19
U.S. Virgin Islands	—	0	0	—	—	—	0	0	—	—	—	0	0	—	—

C.N.M.I.: Commonwealth of Northern Mariana Islands.

U: Unavailable. —: No reported cases. N: Not notifiable. Cum: Cumulative year-to-date counts. Med: Median. Max: Maximum.

\* Incidence data for reporting years 2007 and 2008 are provisional.

† Includes *E. coli* O157:H7; Shiga toxin-positive, serogroup non-O157; and Shiga toxin-positive, not serogrouped.

§ Contains data reported through the National Electronic Disease Surveillance System (NEDSS).

TABLE II. (Continued) Provisional cases of selected notifiable diseases, United States, weeks ending July 5, 2008, and July 7, 2007 (27th Week)\*

Reporting area	Streptococcal disease, invasive, group A					<i>Streptococcus pneumoniae</i> , invasive disease, nondrug resistant† Age <5 years				
	Current week	Previous 52 weeks		Cum 2008	Cum 2007	Current week	Previous 52 weeks		Cum 2008	Cum 2007
		Med	Max				Med	Max		
<b>United States</b>	30	95	259	3,243	3,343	7	35	164	940	1,025
<b>New England</b>	1	6	31	209	271	—	1	14	41	84
Connecticut	—	0	28	71	83	—	0	11	—	11
Maine <sup>§</sup>	—	0	3	17	18	—	0	1	1	1
Massachusetts	—	2	7	83	132	—	1	5	30	56
New Hampshire	—	0	2	16	21	—	0	1	7	8
Rhode Island <sup>§</sup>	—	0	6	12	2	—	0	1	2	6
Vermont <sup>§</sup>	1	0	2	10	15	—	0	1	1	2
<b>Mid. Atlantic</b>	7	16	43	679	654	2	4	19	116	190
New Jersey	—	3	9	106	122	—	1	6	21	39
New York (Upstate)	3	6	18	231	196	2	2	14	62	64
New York City	—	3	10	120	161	—	1	12	33	87
Pennsylvania	4	5	16	222	175	N	0	0	N	N
<b>E.N. Central</b>	—	17	59	656	678	—	6	23	187	191
Illinois	—	5	16	175	207	—	1	6	43	45
Indiana	—	2	11	87	69	—	0	14	23	12
Michigan	—	3	10	86	145	—	1	5	41	56
Ohio	—	5	15	187	164	—	1	5	35	39
Wisconsin	—	2	38	121	93	—	1	9	45	39
<b>W.N. Central</b>	2	4	39	257	219	1	2	16	79	54
Iowa	—	0	0	—	—	—	0	0	—	—
Kansas	—	0	6	32	24	—	0	3	12	—
Minnesota	—	0	35	116	107	—	0	13	28	33
Missouri	—	2	10	62	57	1	1	2	24	15
Nebraska <sup>§</sup>	—	0	3	24	15	—	0	3	6	5
North Dakota	—	0	5	9	10	—	0	2	4	1
South Dakota	2	0	2	14	6	—	0	1	5	—
<b>S. Atlantic</b>	6	21	37	638	774	1	6	13	148	177
Delaware	—	0	2	6	5	—	0	0	—	—
District of Columbia	—	0	2	12	16	—	0	1	1	2
Florida	3	6	11	151	177	—	1	4	41	36
Georgia	1	4	10	132	151	—	1	5	10	39
Maryland <sup>§</sup>	2	4	9	116	136	1	1	5	38	43
North Carolina	—	3	10	86	98	N	0	0	N	N
South Carolina <sup>§</sup>	—	1	5	36	75	—	1	4	29	21
Virginia <sup>§</sup>	—	3	12	80	98	—	0	6	24	31
West Virginia	—	0	3	19	18	—	0	1	5	5
<b>E.S. Central</b>	—	4	13	104	131	—	2	9	62	49
Alabama <sup>§</sup>	N	0	0	N	N	N	0	0	N	N
Kentucky	—	0	3	21	30	N	0	0	N	N
Mississippi	N	0	0	N	N	—	0	3	15	—
Tennessee <sup>§</sup>	—	3	13	83	101	—	2	9	47	49
<b>W.S. Central</b>	7	8	85	265	186	2	5	66	145	138
Arkansas <sup>§</sup>	—	0	2	4	15	—	0	2	5	9
Louisiana	—	0	1	3	13	—	0	2	2	24
Oklahoma	2	1	19	70	43	1	1	7	47	32
Texas <sup>§</sup>	5	5	65	188	115	1	3	58	91	73
<b>Mountain</b>	5	11	22	358	351	1	5	12	152	132
Arizona	3	4	9	131	129	—	2	8	77	65
Colorado	2	3	8	100	91	1	1	4	42	31
Idaho <sup>§</sup>	—	0	2	11	8	—	0	1	3	2
Montana <sup>§</sup>	N	0	0	N	N	—	0	1	2	1
Nevada <sup>§</sup>	—	0	2	6	2	N	0	0	N	N
New Mexico <sup>§</sup>	—	2	7	66	63	—	0	3	13	27
Utah	—	1	5	39	53	—	0	4	14	6
Wyoming <sup>§</sup>	—	0	2	5	5	—	0	1	1	—
<b>Pacific</b>	2	3	10	77	79	—	0	2	10	10
Alaska	—	0	3	20	15	N	0	0	N	N
California	—	0	0	—	—	N	0	0	N	N
Hawaii	2	2	10	57	64	—	0	2	10	10
Oregon <sup>§</sup>	N	0	0	N	N	N	0	0	N	N
Washington	N	0	0	N	N	N	0	0	N	N
American Samoa	—	0	12	30	4	N	0	0	N	N
C.N.M.I.	—	—	—	—	—	—	—	—	—	—
Guam	—	0	3	—	7	—	0	0	—	—
Puerto Rico	N	0	0	N	N	N	0	0	N	N
U.S. Virgin Islands	—	0	0	—	—	N	0	0	N	N

C.N.M.I.: Commonwealth of Northern Mariana Islands.

U: Unavailable. —: No reported cases. N: Not notifiable. Cum: Cumulative year-to-date counts. Med: Median. Max: Maximum.

\* Incidence data for reporting years 2007 and 2008 are provisional.

† Includes cases of invasive pneumococcal disease, in children aged <5 years, caused by *S. pneumoniae*, which is susceptible or for which susceptibility testing is not available (NNDSS event code 11717).

§ Contains data reported through the National Electronic Disease Surveillance System (NEDSS).

TABLE II. (Continued) Provisional cases of selected notifiable diseases, United States, weeks ending July 5, 2008, and July 7, 2007 (27th Week)\*

Reporting area	<i>Streptococcus pneumoniae</i> , invasive disease, drug resistant†										Syphilis, primary and secondary				
	All ages					Age <5 years									
	Current week	Previous 52 weeks		Cum 2008	Cum 2007	Current week	Previous 52 weeks		Cum 2008	Cum 2007	Current week	Previous 52 weeks		Cum 2008	Cum 2007
		Med	Max				Med	Max				Med	Max		
<b>United States</b>	13	50	264	1,518	1,568	5	9	45	244	310	70	229	351	5,564	5,352
<b>New England</b>	1	1	41	30	83	—	0	8	5	12	4	6	14	148	120
Connecticut	—	0	37	—	51	—	0	7	—	4	1	0	6	11	16
Maine <sup>§</sup>	1	0	2	13	8	—	0	1	1	1	—	0	2	6	2
Massachusetts	—	0	0	—	—	—	0	0	—	2	2	4	11	121	70
New Hampshire	—	0	0	—	—	—	0	0	—	—	1	0	3	7	12
Rhode Island <sup>§</sup>	—	0	3	7	13	—	0	1	2	3	—	0	3	2	18
Vermont <sup>§</sup>	—	0	2	10	11	—	0	1	2	2	—	0	5	1	2
<b>Mid. Atlantic</b>	2	3	10	129	90	—	0	2	15	22	19	32	45	889	808
New Jersey	—	0	0	—	—	—	0	0	—	—	5	4	10	106	100
New York (Upstate)	1	1	4	32	29	—	0	2	4	8	7	3	13	75	71
New York City	—	0	5	39	—	—	0	0	—	—	7	17	30	561	498
Pennsylvania	1	1	8	58	61	—	0	2	11	14	—	5	12	147	139
<b>E.N. Central</b>	—	13	50	427	427	—	2	14	68	70	8	16	31	422	433
Illinois	—	2	15	56	76	—	0	6	12	24	—	5	19	70	227
Indiana	—	3	28	132	94	—	0	11	16	12	2	2	6	71	21
Michigan	—	0	2	8	1	—	0	1	2	1	6	2	17	113	57
Ohio	—	7	15	231	256	—	1	4	38	33	—	4	14	145	95
Wisconsin	—	0	0	—	—	—	0	0	—	—	—	1	4	23	33
<b>W.N. Central</b>	2	2	106	103	107	—	0	9	7	22	2	8	15	203	157
Iowa	—	0	0	—	—	—	0	0	—	—	—	0	2	10	9
Kansas	—	1	5	42	58	—	0	1	2	4	—	0	5	19	9
Minnesota	—	0	105	—	1	—	0	9	—	14	—	1	4	44	34
Missouri	2	1	8	61	39	—	0	1	2	—	2	5	10	127	99
Nebraska <sup>§</sup>	—	0	0	—	2	—	0	0	—	—	—	0	1	3	3
North Dakota	—	0	0	—	—	—	0	0	—	—	—	0	1	—	—
South Dakota	—	0	2	—	7	—	0	1	3	4	—	0	3	—	3
<b>S. Atlantic</b>	7	20	42	624	663	3	4	10	106	144	11	48	215	1,178	1,160
Delaware	—	0	1	2	5	—	0	1	—	1	—	0	4	8	6
District of Columbia	—	0	3	12	12	—	0	0	—	—	—	2	11	50	99
Florida	6	11	26	343	364	3	2	6	69	74	8	18	34	466	387
Georgia	1	7	19	204	239	—	1	6	30	60	—	10	175	160	178
Maryland <sup>§</sup>	—	0	2	3	1	—	0	1	1	—	3	6	13	156	152
North Carolina	N	0	0	N	N	N	0	0	N	N	—	6	18	162	177
South Carolina <sup>§</sup>	—	0	0	—	—	—	0	0	—	—	—	2	5	43	52
Virginia <sup>§</sup>	N	0	0	N	N	N	0	0	N	N	—	5	17	133	103
West Virginia	—	1	7	60	42	—	0	2	6	8	—	0	0	—	6
<b>E.S. Central</b>	1	5	14	160	122	2	1	4	31	22	16	20	31	541	409
Alabama <sup>§</sup>	N	0	0	N	N	N	0	0	N	N	3	8	17	226	164
Kentucky	1	1	4	44	17	—	0	2	8	2	1	1	7	46	34
Mississippi	—	0	3	1	30	—	0	3	—	4	2	2	15	74	57
Tennessee <sup>§</sup>	—	3	12	115	75	2	1	3	23	16	10	8	14	195	154
<b>W.S. Central</b>	—	1	5	26	50	—	0	2	7	7	—	39	62	984	891
Arkansas <sup>§</sup>	—	0	2	9	1	—	0	1	2	2	—	2	19	72	57
Louisiana	—	0	5	17	49	—	0	2	5	5	—	10	22	189	236
Oklahoma	N	0	0	N	N	N	0	0	N	N	—	1	5	42	34
Texas <sup>§</sup>	—	0	0	—	—	—	0	0	—	—	—	25	49	681	564
<b>Mountain</b>	—	1	6	19	26	—	0	2	4	9	4	9	29	194	212
Arizona	—	0	0	—	—	—	0	0	—	—	—	5	21	78	111
Colorado	—	0	0	—	—	—	0	0	—	—	2	1	7	59	23
Idaho <sup>§</sup>	N	0	0	N	N	N	0	0	N	N	1	0	1	2	1
Montana <sup>§</sup>	—	0	0	—	—	—	0	0	—	—	—	0	3	—	1
Nevada <sup>§</sup>	N	0	0	N	N	N	0	0	N	N	1	2	6	38	46
New Mexico <sup>§</sup>	—	0	1	1	—	—	0	0	—	—	—	1	3	17	22
Utah	—	1	6	18	15	—	0	2	4	8	—	0	2	—	7
Wyoming <sup>§</sup>	—	0	1	—	11	—	0	1	—	1	—	0	1	—	1
<b>Pacific</b>	—	0	0	—	—	—	0	1	1	2	6	40	71	1,005	1,162
Alaska	N	0	0	N	N	N	0	0	N	N	—	0	1	—	5
California	N	0	0	N	N	N	0	0	N	N	1	36	59	894	1,083
Hawaii	—	0	0	—	—	—	0	1	1	2	—	0	2	11	5
Oregon <sup>§</sup>	N	0	0	N	N	N	0	0	N	N	1	0	2	8	8
Washington	N	0	0	N	N	N	0	0	N	N	4	3	13	92	61
American Samoa	N	0	0	N	N	N	0	0	N	N	—	0	0	—	4
C.N.M.I.	—	—	—	—	—	—	—	—	—	—	—	—	—	—	—
Guam	—	0	0	—	—	—	0	0	—	—	—	0	0	—	—
Puerto Rico	—	0	0	—	—	—	0	0	—	—	—	3	10	90	76
U.S. Virgin Islands	—	0	0	—	—	—	0	0	—	—	—	0	0	—	—

C.N.M.I.: Commonwealth of Northern Mariana Islands.

U: Unavailable. —: No reported cases. N: Not notifiable. Cum: Cumulative year-to-date counts. Med: Median. Max: Maximum.

\* Incidence data for reporting years 2007 and 2008 are provisional.

† Includes cases of invasive pneumococcal disease caused by drug-resistant *S. pneumoniae* (DRSP) (NNDSS event code 11720).

§ Contains data reported through the National Electronic Disease Surveillance System (NEDSS).

TABLE II. (Continued) Provisional cases of selected notifiable diseases, United States, weeks ending July 5, 2008, and July 7, 2007 (27th Week)\*

Reporting area	Varicella (chickenpox)					West Nile virus disease <sup>†</sup>									
	Current week	Previous 52 weeks		Cum 2008	Cum 2007	Neuroinvasive					Nonneuroinvasive <sup>§</sup>				
		Med	Max			Current week	Med	Max	Cum 2008	Cum 2007	Current week	Med	Max	Cum 2008	Cum 2007
<b>United States</b>	138	645	1,654	16,932	25,717	—	1	143	5	71	—	1	307	12	156
<b>New England</b>	2	15	68	306	1,577	—	0	2	—	—	—	0	2	—	—
Connecticut	—	4	38	—	901	—	0	1	—	—	—	0	1	—	—
Maine <sup>¶</sup>	—	0	26	—	206	—	0	0	—	—	—	0	0	—	—
Massachusetts	—	0	0	—	—	—	0	2	—	—	—	0	2	—	—
New Hampshire	—	5	18	137	214	—	0	0	—	—	—	0	0	—	—
Rhode Island <sup>¶</sup>	—	0	0	—	—	—	0	0	—	—	—	0	1	—	—
Vermont <sup>¶</sup>	2	6	17	169	256	—	0	0	—	—	—	0	0	—	—
<b>Mid. Atlantic</b>	34	58	117	1,420	3,115	—	0	3	—	1	—	0	3	—	1
New Jersey	N	0	0	N	N	—	0	1	—	—	—	0	0	—	—
New York (Upstate)	N	0	0	N	N	—	0	2	—	—	—	0	1	—	—
New York City	N	0	0	N	N	—	0	3	—	—	—	0	3	—	—
Pennsylvania	34	58	117	1,420	3,115	—	0	1	—	1	—	0	1	—	1
<b>E.N. Central</b>	3	157	378	3,885	7,458	—	0	19	—	6	—	0	12	—	3
Illinois	—	13	124	618	653	—	0	14	—	5	—	0	8	—	2
Indiana	—	0	222	—	—	—	0	4	—	—	—	0	2	—	—
Michigan	3	59	154	1,530	2,810	—	0	5	—	1	—	0	1	—	—
Ohio	—	55	128	1,492	3,215	—	0	4	—	—	—	0	3	—	1
Wisconsin	—	7	32	245	780	—	0	2	—	—	—	0	2	—	—
<b>W.N. Central</b>	2	21	145	714	1,095	—	0	41	—	9	—	0	118	2	63
Iowa	N	0	0	N	N	—	0	4	—	1	—	0	3	—	2
Kansas	—	6	36	233	407	—	0	3	—	1	—	0	7	—	1
Minnesota	—	0	0	—	—	—	0	9	—	1	—	0	12	—	—
Missouri	2	11	47	413	624	—	0	8	—	—	—	0	3	—	1
Nebraska <sup>¶</sup>	N	0	0	N	N	—	0	5	—	1	—	0	16	—	19
North Dakota	—	0	140	48	—	—	0	11	—	4	—	0	49	1	21
South Dakota	—	0	5	20	64	—	0	9	—	1	—	0	32	1	19
<b>S. Atlantic</b>	28	93	161	2,763	3,289	—	0	12	—	2	—	0	6	—	2
Delaware	—	1	5	28	25	—	0	1	—	—	—	0	0	—	—
District of Columbia	—	0	3	17	21	—	0	0	—	—	—	0	0	—	—
Florida	10	30	87	1,104	755	—	0	1	—	1	—	0	0	—	—
Georgia	N	0	0	N	N	—	0	8	—	—	—	0	5	—	1
Maryland <sup>¶</sup>	N	0	0	N	N	—	0	2	—	—	—	0	2	—	—
North Carolina	N	0	0	N	N	—	0	1	—	—	—	0	2	—	—
South Carolina <sup>¶</sup>	4	16	66	537	690	—	0	2	—	—	—	0	1	—	1
Virginia <sup>¶</sup>	1	21	73	640	1,098	—	0	1	—	1	—	0	1	—	—
West Virginia	13	15	66	437	700	—	0	0	—	—	—	0	0	—	—
<b>E.S. Central</b>	8	17	101	778	323	—	0	11	3	11	—	0	14	3	8
Alabama <sup>¶</sup>	8	17	101	769	322	—	0	2	—	2	—	0	1	—	1
Kentucky	N	0	0	N	N	—	0	1	—	—	—	0	0	—	—
Mississippi	—	0	2	9	1	—	0	7	3	8	—	0	12	2	7
Tennessee <sup>¶</sup>	N	0	0	N	N	—	0	1	—	1	—	0	2	1	—
<b>W.S. Central</b>	55	181	886	5,803	7,058	—	0	36	—	8	—	0	19	5	5
Arkansas <sup>¶</sup>	4	11	42	353	447	—	0	5	—	1	—	0	2	—	—
Louisiana	—	1	7	27	89	—	0	5	—	—	—	0	3	—	—
Oklahoma	N	0	0	N	N	—	0	11	—	1	—	0	8	2	—
Texas <sup>¶</sup>	51	166	852	5,423	6,522	—	0	19	—	6	—	0	11	3	5
<b>Mountain</b>	4	39	105	1,230	1,778	—	0	36	1	15	—	0	148	—	42
Arizona	—	0	0	—	—	—	0	8	1	10	—	0	10	—	2
Colorado	3	16	43	553	684	—	0	17	—	2	—	0	67	—	18
Idaho <sup>¶</sup>	N	0	0	N	N	—	0	3	—	—	—	0	22	—	9
Montana <sup>¶</sup>	—	5	25	177	275	—	0	10	—	1	—	0	30	—	2
Nevada <sup>¶</sup>	N	0	0	N	N	—	0	1	—	—	—	0	3	—	1
New Mexico <sup>¶</sup>	1	4	22	130	282	—	0	8	—	—	—	0	6	—	—
Utah	—	9	55	365	519	—	0	8	—	1	—	0	9	—	3
Wyoming <sup>¶</sup>	—	0	9	5	18	—	0	8	—	1	—	0	34	—	7
<b>Pacific</b>	2	1	4	33	24	—	0	18	1	19	—	0	23	2	32
Alaska	2	1	4	33	24	—	0	0	—	—	—	0	0	—	—
California	—	0	0	—	—	—	0	18	1	19	—	0	20	2	30
Hawaii	—	0	0	—	—	—	0	0	—	—	—	0	0	—	—
Oregon <sup>¶</sup>	N	0	0	N	N	—	0	3	—	—	—	0	4	—	2
Washington	N	0	0	N	N	—	0	0	—	—	—	0	0	—	—
American Samoa	N	0	0	N	N	—	0	0	—	—	—	0	0	—	—
C.N.M.I.	—	—	—	—	—	—	—	—	—	—	—	—	—	—	—
Guam	—	2	17	55	180	—	0	0	—	—	—	0	0	—	—
Puerto Rico	1	10	37	259	440	—	0	0	—	—	—	0	0	—	—
U.S. Virgin Islands	—	0	0	—	—	—	0	0	—	—	—	0	0	—	—

C.N.M.I.: Commonwealth of Northern Mariana Islands.

U: Unavailable. —: No reported cases. N: Not notifiable. Cum: Cumulative year-to-date counts. Med: Median. Max: Maximum.

\* Incidence data for reporting years 2007 and 2008 are provisional.

<sup>†</sup> Updated weekly from reports to the Division of Vector-Borne Infectious Diseases, National Center for Zoonotic, Vector-Borne, and Enteric Diseases (ArboNET Surveillance). Data for California serogroup, eastern equine, Powassan, St. Louis, and western equine diseases are available in Table I.<sup>§</sup> Not notifiable in all states. Data from states where the condition is not notifiable are excluded from this table, except in 2007 for the domestic arboviral diseases and influenza-associated pediatric mortality, and in 2003 for SARS-CoV. Reporting exceptions are available at <http://www.cdc.gov/epo/dphsi/phs/infdis.htm>.<sup>¶</sup> Contains data reported through the National Electronic Disease Surveillance System (NEDSS).

TABLE III. Deaths in 122 U.S. cities,\* week ending July 5, 2008 (27th Week)

Reporting Area	All causes, by age (years)							Reporting Area	All causes, by age (years)						
	All Ages	≥65	45-64	25-44	1-24	<1	P&I† Total		All Ages	≥65	45-64	25-44	1-24	<1	P&I† Total
<b>New England</b>	403	255	92	26	17	13	31	<b>S. Atlantic</b>	1,137	666	291	114	41	25	46
Boston, MA	112	57	31	10	9	5	13	Atlanta, GA	166	94	48	18	3	3	—
Bridgeport, CT	30	21	6	3	—	—	1	Baltimore, MD	145	74	44	16	9	2	8
Cambridge, MA	16	13	2	1	—	—	2	Charlotte, NC	94	56	26	8	3	1	6
Fall River, MA	18	13	4	1	—	—	1	Jacksonville, FL	121	73	35	9	2	2	3
Hartford, CT	39	26	7	4	2	—	4	Miami, FL	168	101	32	22	11	2	10
Lowell, MA	13	11	1	1	—	—	—	Norfolk, VA	45	25	10	7	2	1	—
Lynn, MA	6	2	—	1	3	—	—	Richmond, VA	35	15	12	4	2	2	4
New Bedford, MA	19	14	5	—	—	—	1	Savannah, GA	45	31	9	3	—	2	6
New Haven, CT	13	8	3	1	—	1	2	St. Petersburg, FL	47	25	12	6	1	3	3
Providence, RI	39	24	11	2	2	—	1	Tampa, FL	157	102	34	13	5	3	4
Somerville, MA	1	1	—	—	—	—	—	Washington, D.C.	98	58	25	8	3	4	—
Springfield, MA	36	22	9	—	—	5	1	Wilmington, DE	16	12	4	—	—	—	2
Waterbury, CT	22	17	5	—	—	—	4	<b>E.S. Central</b>	716	435	171	55	29	26	53
Worcester, MA	39	26	8	2	1	2	1	Birmingham, AL	153	102	29	11	4	7	15
<b>Mid. Atlantic</b>	1,752	1,170	385	123	36	37	84	Chattanooga, TN	38	28	5	2	1	2	3
Albany, NY	41	28	6	3	2	2	4	Knoxville, TN	87	52	26	5	2	2	7
Allentown, PA	20	15	4	1	—	—	—	Lexington, KY	60	43	8	4	1	4	3
Buffalo, NY	78	56	13	7	2	—	8	Memphis, TN	163	92	41	15	9	6	17
Camden, NJ	29	18	7	2	—	2	2	Mobile, AL	72	47	20	3	1	1	3
Elizabeth, NJ	12	10	1	1	—	—	—	Montgomery, AL	24	15	4	2	3	—	1
Erie, PA	57	48	7	1	—	1	5	Nashville, TN	119	56	38	13	8	4	4
Jersey City, NJ	11	3	5	2	1	—	—	<b>W.S. Central</b>	1,127	714	269	89	26	29	56
New York City, NY	805	534	191	53	18	8	26	Austin, TX	63	53	1	6	1	2	2
Newark, NJ	47	21	13	5	2	6	1	Baton Rouge, LA	58	38	10	7	3	—	—
Paterson, NJ	14	7	6	1	—	—	2	Corpus Christi, TX	40	29	7	—	—	4	5
Philadelphia, PA	258	150	64	27	5	12	13	Dallas, TX	167	93	53	14	3	4	7
Pittsburgh, PA§	32	26	4	1	1	—	6	El Paso, TX	65	47	10	5	2	1	2
Reading, PA	30	28	2	—	—	—	2	Fort Worth, TX	105	70	22	10	2	1	2
Rochester, NY	110	80	19	8	1	2	7	Houston, TX	256	140	76	21	8	11	8
Schenectady, NY	20	18	1	—	1	—	2	Little Rock, AR	63	37	20	4	—	2	—
Scranton, PA	27	18	6	2	—	1	1	New Orleans, LA†	U	U	U	U	U	U	U
Syracuse, NY	105	73	22	4	3	3	4	San Antonio, TX	186	119	42	15	6	4	21
Trenton, NJ	20	14	6	—	—	—	—	Shreveport, LA	52	34	15	3	—	—	7
Utica, NY	15	9	5	1	—	—	1	Tulsa, OK	72	54	13	4	1	—	2
Yonkers, NY	21	14	3	4	—	—	—	<b>Mountain</b>	815	529	189	46	25	26	44
<b>E.N. Central</b>	1,499	978	367	94	30	30	98	Albuquerque, NM	99	61	25	8	3	2	6
Akron, OH	33	20	10	2	—	1	—	Boise, ID	45	34	9	1	1	—	3
Canton, OH	35	25	8	2	—	—	—	Colorado Springs, CO	100	63	23	8	2	4	1
Chicago, IL	249	143	69	23	8	6	23	Denver, CO	40	23	10	3	—	4	—
Cincinnati, OH	66	38	16	7	—	5	5	Las Vegas, NV	175	114	44	8	3	6	12
Cleveland, OH	198	141	45	6	2	4	10	Ogden, UT	28	21	5	1	1	—	3
Columbus, OH	133	76	36	6	9	6	5	Phoenix, AZ	140	85	31	12	8	4	7
Dayton, OH	114	80	22	9	2	1	9	Pueblo, CO	17	7	9	—	—	1	1
Detroit, MI	U	U	U	U	U	U	U	Salt Lake City, UT	74	44	19	2	5	4	4
Evansville, IN	54	37	14	2	—	1	—	Tucson, AZ	97	77	14	3	2	1	7
Fort Wayne, IN	59	42	14	1	1	1	6	<b>Pacific</b>	1,251	813	297	84	35	22	103
Gary, IN	12	7	5	—	—	—	—	Berkeley, CA	12	6	3	2	—	1	1
Grand Rapids, MI	42	30	4	5	1	2	3	Fresno, CA	U	U	U	U	U	U	U
Indianapolis, IN	183	120	45	12	4	2	10	Glendale, CA	20	19	1	—	—	—	4
Lansing, MI	38	27	8	2	1	—	2	Honolulu, HI	44	31	8	4	—	1	7
Milwaukee, WI	77	44	26	6	1	—	11	Long Beach, CA	52	28	17	3	3	1	6
Peoria, IL	32	22	7	3	—	—	4	Los Angeles, CA	213	133	55	16	5	4	16
Rockford, IL	29	21	7	1	—	—	1	Pasadena, CA	20	15	3	—	1	1	2
South Bend, IN	26	19	6	1	—	—	2	Portland, OR	106	62	27	12	2	3	4
Toledo, OH	77	50	19	6	1	1	4	Sacramento, CA	160	100	40	16	3	1	7
Youngstown, OH	42	36	6	—	—	—	3	San Diego, CA	114	70	31	7	3	3	12
<b>W.N. Central</b>	479	286	129	32	11	18	39	San Francisco, CA	83	53	22	7	—	1	7
Des Moines, IA	85	53	23	4	2	3	10	San Jose, CA	150	116	24	6	3	1	21
Duluth, MN	23	16	7	—	—	—	—	Santa Cruz, CA	26	20	4	1	1	—	—
Kansas City, KS	14	7	6	1	—	—	—	Seattle, WA	75	45	19	1	7	3	7
Kansas City, MO	64	38	16	5	—	4	9	Spokane, WA	49	35	10	3	—	1	5
Lincoln, NE	28	22	5	—	—	1	3	Tacoma, WA	127	80	33	6	7	1	4
Minneapolis, MN	52	20	19	8	1	4	4	<b>Total</b>	9,179**	5,846	2,190	663	250	226	554
Omaha, NE	61	41	13	2	2	3	4								
St. Louis, MO	42	18	15	2	2	3	4								
St. Paul, MN	45	29	9	5	2	—	—								
Wichita, KS	65	42	16	5	2	—	5								

U: Unavailable. —: No reported cases.

\* Mortality data in this table are voluntarily reported from 122 cities in the United States, most of which have populations of ≥100,000. A death is reported by the place of its occurrence and by the week that the death certificate was filed. Fetal deaths are not included.

† Pneumonia and influenza.

§ Because of changes in reporting methods in this Pennsylvania city, these numbers are partial counts for the current week. Complete counts will be available in 4 to 6 weeks.

¶ Because of Hurricane Katrina, weekly reporting of deaths has been temporarily disrupted.

\*\* Total includes unknown ages.



**TABLE IV. Provisional cases of selected notifiable disease,\* United States, quarter ending June 28, 2008 (26th Week)**

Reporting area	Tuberculosis				
	Current quarter	Previous 4 quarters		Cum 2008	Cum 2007
		Min	Max		
<b>United States</b>	2,056	2,056	3,930	4,117	5,617
<b>New England</b>	37	36	41	73	105
Connecticut	28	24	28	54	56
Maine	3	1	4	4	11
Massachusetts	—	0	0	—	—
New Hampshire	—	0	4	3	5
Rhode Island	4	3	10	8	32
Vermont	2	1	2	4	1
<b>Mid. Atlantic</b>	474	421	538	895	899
New Jersey	91	69	152	160	203
New York (Upstate)	60	47	98	114	116
New York City	225	204	250	429	454
Pennsylvania	98	72	98	192	126
<b>E.N. Central</b>	119	119	370	273	551
Illinois	16	16	172	71	224
Indiana	28	28	31	57	66
Michigan	1	1	78	10	113
Ohio	58	52	70	110	118
Wisconsin	16	9	21	25	30
<b>W.N. Central</b>	85	85	146	171	220
Iowa	6	6	15	21	16
Kansas	—	0	12	—	37
Minnesota	43	34	73	77	97
Missouri	29	20	37	49	55
Nebraska	4	4	15	19	11
North Dakota	—	0	7	—	—
South Dakota	3	2	6	5	4
<b>S. Atlantic</b>	311	311	787	703	1,185
Delaware	3	2	6	7	12
District of Columbia	15	13	18	28	25
Florida	153	153	288	359	426
Georgia	17	17	79	96	247
Maryland	58	49	73	107	130
North Carolina	—	0	127	—	142
South Carolina	—	0	83	—	95
Virginia	60	33	125	93	98
West Virginia	5	5	8	13	10
<b>E.S. Central</b>	182	99	229	281	265
Alabama	40	33	50	73	79
Kentucky	27	4	42	31	53
Mississippi	30	17	49	47	47
Tennessee	85	45	88	130	86
<b>W.S. Central</b>	211	211	581	539	873
Arkansas	22	8	31	30	56
Louisiana	—	0	114	—	1
Oklahoma	16	16	44	39	79
Texas	173	173	411	470	737
<b>Mountain</b>	88	80	221	168	204
Arizona	43	43	155	98	84
Colorado	1	1	36	4	52
Idaho	—	0	0	—	—
Montana	—	0	0	—	—
Nevada	23	0	23	32	16
New Mexico	16	4	17	26	30
Utah	5	3	13	8	22
Wyoming	—	0	0	—	—
<b>Pacific</b>	549	465	1,017	1,014	1,315
Alaska	7	7	14	21	25
California	504	429	890	933	1,097
Hawaii	30	22	36	52	58
Oregon	—	0	0	—	—
Washington	8	0	85	8	135
American Samoa	—	0	0	—	3
C.N.M.I.	—	—	—	—	—
Guam	—	0	0	—	—
Puerto Rico	16	8	35	24	34
U.S. Virgin Islands	—	0	0	—	—

C.N.M.I.: Commonwealth of Northern Mariana Islands.

U: Unavailable. —: No reported cases. N: Not notifiable.

Cum: Cumulative year-to-date counts. Min: Minimum. Max: Maximum.

\* AIDS and HIV/AIDS data are not updated for this quarter because of upgrading of the national HIV/AIDS surveillance data management system.





The *Morbidity and Mortality Weekly Report (MMWR)* Series is prepared by the Centers for Disease Control and Prevention (CDC) and is available free of charge in electronic format. To receive an electronic copy each week, send an e-mail message to [listserv@listserv.cdc.gov](mailto:listserv@listserv.cdc.gov). The body content should read *SUBscribe mmwr-toc*. Electronic copy also is available from CDC's Internet server at <http://www.cdc.gov/mmwr> or from CDC's file transfer protocol server at <ftp://ftp.cdc.gov/pub/publications/mmwr>. Paper copy subscriptions are available through the Superintendent of Documents, U.S. Government Printing Office, Washington, DC 20402; telephone 202-512-1800.

Data in the weekly *MMWR* are provisional, based on weekly reports to CDC by state health departments. The reporting week concludes at close of business on Friday; compiled data on a national basis are officially released to the public on the following Friday. Data are compiled in the National Center for Public Health Informatics, Division of Integrated Surveillance Systems and Services. Address all inquiries about the *MMWR* Series, including material to be considered for publication, to Editor, *MMWR* Series, Mailstop E-90, CDC, 1600 Clifton Rd., N.E., Atlanta, GA 30333 or to [mmwrq@cdc.gov](mailto:mmwrq@cdc.gov).

All material in the *MMWR* Series is in the public domain and may be used and reprinted without permission; citation as to source, however, is appreciated.

Use of trade names and commercial sources is for identification only and does not imply endorsement by the U.S. Department of Health and Human Services.

References to non-CDC sites on the Internet are provided as a service to *MMWR* readers and do not constitute or imply endorsement of these organizations or their programs by CDC or the U.S. Department of Health and Human Services. CDC is not responsible for the content of these sites. URL addresses listed in *MMWR* were current as of the date of publication.