

MMWRTM

MORBIDITY AND MORTALITY WEEKLY REPORT

- 1153 Serious Adverse Events Attributed to Nevirapine Regimens for Postexposure Prophylaxis After HIV Exposures — Worldwide, 1997–2000
- 1156 Nosocomial Poisoning Associated With Emergency Department Treatment of Organophosphate Toxicity — Georgia, 2000

Serious Adverse Events Attributed to Nevirapine Regimens for Postexposure Prophylaxis After HIV Exposures — Worldwide, 1997–2000

In September 2000, two instances of life-threatening hepatotoxicity were reported in health-care workers taking nevirapine (NVP) for postexposure prophylaxis (PEP) after occupational human immunodeficiency virus (HIV) exposure*. In one case, a 43-year-old female health-care worker required liver transplantation after developing fulminant hepatitis and end-stage hepatic failure while taking NVP, zidovudine, and lamivudine as PEP following a needlestick injury (1). In the second case, a 38-year-old male physician was hospitalized with life-threatening fulminant hepatitis while taking NVP, zidovudine, and lamivudine as PEP following a mucous membrane exposure. To characterize NVP-associated PEP toxicity, CDC and the Food and Drug Administration (FDA) reviewed MedWatch reports of serious adverse events in persons taking NVP for PEP received by FDA (Figure 1). This report summarizes the results of that analysis and indicates that healthy persons taking abbreviated 4-week NVP regimens for PEP are at risk for serious adverse events. Clinicians should use recommended PEP guidelines and dosing instructions to reduce the risk for serious adverse events.

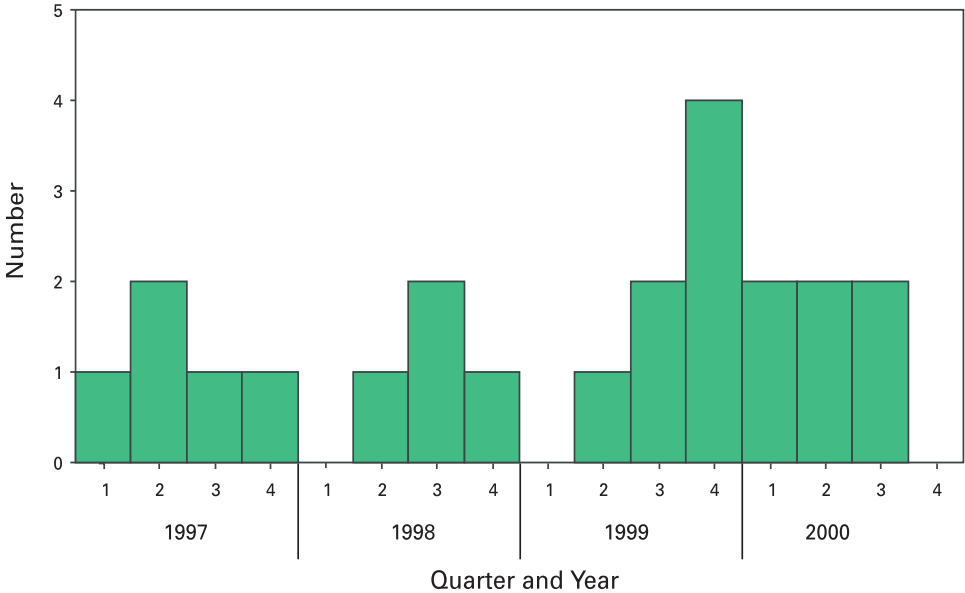
MedWatch is a voluntary reporting system for adverse events and problems with drugs, medical devices, biologics, and special nutritional products. For this analysis, a serious adverse event was defined as any event that was life-threatening, permanently disabling, required or prolonged hospitalization, required intervention to prevent permanent impairment or damage, or any other event that required medical attention.

Including the two case reports of fulminant hepatitis, FDA received reports of 22 cases of serious adverse events related to NVP taken for PEP from March 1997 through September 2000. These 22 events included hepatotoxicity (12), skin reaction (14), and rhabdomyolysis (one); four cases involved both hepatotoxicity and skin reaction, and one case involved both rhabdomyolysis and skin reaction. The median age of affected persons was 36.5 years (range: 12–50 years; age was not reported for four cases); 12 were female, and 12 occurred in the United States. Reasons for administration of PEP were occupational needlestick or other sharps injury (12), other occupational exposure (four), sexual exposure (three), nonoccupational (pediatric) needlestick injury (one), other nonoccupational exposure (one), and unknown (one).

Nine persons took a maximum NVP dose of 200 mg per day, and 12 persons took a maximum dose of 200 mg twice per day (the dose of NVP was not recorded for one

*Information included in this report does not represent Food and Drug Administration approval or approved labeling for the particular product or indications in question.

Nevirapine Regimens — Continued

FIGURE 1. Number of cases of serious adverse events associated with nevirapine regimens for human immunodeficiency virus postexposure prophylaxis, by quarter and year — Worldwide, 1997–2000*

* n=22.

person). Among the 12 persons taking a maximum dose of 200 mg twice daily, six were first given a lead-in dose of 200 mg per day for 3–14 days. Concomitant antiretroviral agents used with NVP for PEP included zidovudine and lamivudine (10); stavudine and lamivudine (three); zidovudine and didanosine (two); stavudine and didanosine (one); stavudine and indinavir (one); didanosine and indinavir (one); stavudine, didanosine, and ritonavir (one); lamivudine, didanosine, and nelfinavir (one); stavudine, lamivudine, nelfinavir, and saquinavir (one); and none (one). Among the 12 persons with hepatotoxic reactions, one developed liver failure (requiring liver transplantation), seven had clinical hepatitis (e.g., jaundice, fever, nausea, vomiting, abdominal pain, and/or hepatomegaly), and four had elevations in serum liver enzymes (i.e., alanine aminotransferase [ALT] and aspartate aminotransferase [AST]) without reports of clinical hepatitis.

Baseline liver function tests were reported for six patients and were within normal limits. Abnormal liver function tests were reported during PEP for 10 patients; median peak ALT was 215 U/L (range: 182–2790 U/L; normal: 10–34 U/L), median peak AST was 375 U/L (range: 96–2370 U/L; normal: 10–34 U/L), and median peak total bilirubin was 7.5 mg/dL (range: 2.0–33.7 mg/dL; normal: 0.2–1.0 mg/dL). The median time from initiation of NVP use to first abnormal liver function tests was 21 days (range: 13–36 days). In six cases, hepatitis A, B, and C serologies were reported; all were negative. Eleven persons reported symptoms, including fever, malaise, and abdominal pain. The median onset of these symptoms was 14 days after beginning NVP for PEP (range: 3–36 days). The 14 reports of skin rash included one documented and two possible cases of Stevens-Johnson syndrome. The median onset of rash occurred 9 days after beginning PEP (range: 6–36 days).

Nevirapine Regimens — Continued

Reported by: D Boxwell, Pharm D, Office of Postmarketing Drug Risk Assessment; H Haverkos, MD, S Kukich, MD, K Struble, Pharm D, H Jolson, MD, Div of Anti-Viral Drug Products, Center for Drug Evaluation and Research, Food and Drug Administration. Prevention and Evaluation Br, Div of Healthcare Quality Promotion [proposed], National Center for Infectious Diseases, CDC.

Editorial Note: Severe, life-threatening, and fatal cases of hepatotoxicity and skin reactions have occurred among HIV-infected patients treated with NVP (2,3) and are described in a box warning on the NVP label (Viramune™ [package insert][†], Boehringer Ingelheim/Roxane Laboratories, Inc., Ridgefield, Connecticut, 1998). This report suggests that persons taking NVP regimens for PEP after HIV exposures also are at risk for serious adverse events.

In 1996, the U.S. Public Health Service (PHS) first recommended PEP after certain occupational exposures to HIV (4). These recommendations, updated in 1998 (5), are being revised to include other antiretroviral agents that have been approved by FDA for use in HIV-infected persons. NVP is not recommended for basic or expanded PEP regimens. However, data on the safe and effective use of single-dose NVP to prevent perinatal HIV transmission (6,7) and a theoretical advantage of more rapid activity (i.e., NVP does not require phosphorylation for activation) have prompted clinicians to include NVP in PEP regimens following HIV exposures. In the HIV PEP registry, which collected data on occupational HIV PEP use from October 1995 through March 1999, six cases of serious adverse events related to PEP were reported among 492 registered participants; a severe skin reaction occurred in one of 11 health-care workers taking a regimen that included NVP (8).

Because most occupational HIV exposures do not result in transmission of HIV (9), clinicians considering prescribing PEP for exposed persons must balance the risk for HIV transmission represented by the exposure and the exposure source against the potential toxicity of the specific agent(s) used (4). In many circumstances, the risks associated with NVP as part of a PEP regimen outweigh the anticipated benefits. When PEP is prescribed, the manufacturer's package insert should be consulted for dosing instructions, possible side effects, and potential drug interactions.

The findings in this report are subject to at least three limitations. First, MedWatch is a voluntary, passive reporting system, and it is unlikely that all serious adverse events in persons taking NVP for PEP have been reported. Second, data about administration of a lead-in dose and results of baseline liver function tests and hepatitis serologies were not included in all reports. In six cases, the initial dose of NVP was 200 mg twice daily without the recommended 2-week dose escalation, which may have increased the likelihood of adverse events (10). Third, available denominator data about the use of NVP for PEP were insufficient to calculate accurate rates of adverse events.

The findings in this report do not apply to NVP use in other settings. Single-dose NVP is one of the regimens recommended by PHS for prevention of perinatal HIV transmission (7). No serious toxicity has been reported among mother-infant pairs using this regimen. Combination antiretroviral regimens containing NVP may be used in HIV-infected persons after weighing the risks and benefits and monitoring adverse reactions.

Health-care providers and the public can assist in monitoring the safety of antiretrovirals and other agents by reporting adverse reactions to the FDA MedWatch program: telephone, (800) 332-1088, fax, (800) 332-0178, World-Wide Web, <http://www.FDA.gov/medwatch>, or mail, MedWatch, HF-2, FDA, 5600 Fishers Lane, Rockville, MD 20857.

[†] Use of trade names and commercial sources is for identification only and does not constitute endorsement by CDC or the U.S. Department of Health and Human Services.

*Nevirapine Regimens — Continued**References*

1. Johnson S, Baraboutis JG, Sha BE, Proia LA, Kessler HA. Adverse effects associated with use of nevirapine in HIV postexposure for 2 health care workers [Letters]. *JAMA* 2000;284:2722–3.
2. Cattelan AM, Erne E, Slatino A, et al. Severe hepatic failure related to nevirapine treatment. *Clin Infect Dis* 1999;29:455–6.
3. Sidley P. South Africa to tighten control on drug trials after five deaths. *Br Med J* 2000;320:1028.
4. CDC. Update: provisional Public Health Service recommendations for chemoprophylaxis after occupational exposure to HIV. *MMWR* 1996;45:468–72.
5. CDC. Public Health Service guidelines for the management of health-care worker exposures to HIV and recommendations for postexposure prophylaxis. *MMWR* 1998;47(no. RR-7).
6. Guay LA, Musoke P, Fleming T, et al. Intrapartum and neonatal single-dose nevirapine compared with zidovudine for prevention of mother-to-child transmission of HIV-1 in Kampala, Uganda: HIVNET 012 randomized trial. *Lancet* 1999;354:795–802.
7. US Public Health Service. Public Health Service Task Force recommendations for use of antiretroviral drugs in pregnant HIV-1 infected women for maternal health and interventions to reduce perinatal HIV-1 transmission in the United States. Available at http://hivatis.org/guidelines/perinatal/Nov_00/text/index.html. Accessed January 2001.
8. Wang SA, Panlilio AL, Doi PA, et al. Experience of healthcare workers taking postexposure prophylaxis after occupational HIV exposures: findings of the HIV Postexposure Prophylaxis Registry. *Infect Control Hosp Epidemiol* 2000;21:780–5.
9. Bell DM. Occupational risk of human immunodeficiency virus infection in healthcare workers: an overview. *Am J Med* 1997;102:9–15.
10. Soriano AP, Jiménez-Nácher I, Rodríguez-Rosado R, Dona MC, Barreiro PM, González-Lahoz J. Incidence of rash and discontinuation of nevirapine using two different escalating initial doses [Letter]. *AIDS* 1999;13:524.

Nosocomial Poisoning Associated With Emergency Department Treatment of Organophosphate Toxicity — Georgia, 2000

Emergency department (ED) staff caring for patients contaminated with toxic chemicals are at risk for developing toxicity from secondary contamination. This report describes three cases of occupational illnesses associated with organophosphate toxicity caused by exposure to a contaminated patient and underscores the importance of using personal protection equipment (PPE) and establishing and following decontamination procedures in EDs and other areas of acute care hospitals.

Patient 1

On April 11, a 40-year-old man intentionally ingested approximately 110 g of a veterinary insecticide concentrate. The insecticide contained 73% naphthalene, xylene, and surfactant, and 11.6% phosmet. On clinical examination at a local hospital ED approximately 20 minutes after the ingestion, the patient had profuse oral and bronchial secretions, vomiting, bronchospasm, and respiratory distress. He was intubated for airway management and ventilation. To control secretions, he received 4 g pralidoxime and 22 mg atropine during the next 24 hours. The patient improved over a 9-day period and was transferred to a psychiatric facility.

The patient was brought to the ED by a friend, not by emergency medical services, and the friend developed symptoms that required treatment. ED personnel exposed to

Organophosphate Toxicity — Continued

the patient had symptoms within an hour of his arrival. The staff noted a chemical odor in the ED and contacted the regional poison center, which recommended decontaminating the patient's skin and placing gastric contents in a sealed container to minimize evaporation; however, no decontamination was performed.

Health-Care Worker 1

A 45-year-old ED nursing assistant providing care to patient 1 developed respiratory distress, profuse secretions, emesis, diaphoresis, and weakness. She had contact with the patient's skin, respiratory secretions, and emesis. She was admitted to the hospital and required intubation for 24 hours to support respiration. After medical management and serial doses of atropine and pralidoxime for 7 days, her respiratory function improved, and she was discharged after 9 days of hospitalization.

Health-Care Worker 2

A 32-year-old ED nurse had diaphoresis, confusion, hypersalivation, nausea, and abdominal cramps while caring for patient 1. Although she did not have skin contact with his secretions or emesis, she had shared his breathing space. After treatment with 10 mg of atropine and pralidoxime over the next 12 hours, her symptoms resolved.

Health-Care Worker 3

A 56-year-old nurse providing care for patient 1 was admitted to the hospital with dyspnea, confusion, and headache. Although she did not have skin contact with secretions or emesis from patient 1, she had shared his breathing space. She was given 6 mg of atropine without relief of the dyspnea. As a possible result of excessive atropine, she experienced hallucinations. On recommendation of the regional poison center, she received intravenous lorazepam and was observed until the episode resolved. She improved overnight and was discharged.

Reported by: RJ Geller, MD, KL Singleton, MD, ML Tarantino, Georgia Poison Center, Atlanta; CL Drenzek, DVM, KE Toomey, MD, State Epidemiologist, Georgia Div of Public Health. Div of Surveillance, Hazard Evaluations, and Field Studies, National Institute for Occupational Safety and Health; National Pharmaceutical Stockpile Br, Div of Emergency and Environmental Health Svcs; Div of Environmental Hazards and Health Effects; National Center for Environmental Health, CDC.

Editorial Note: During the incident in this report, health-care workers were exposed to a patient contaminated with an organophosphate insecticide. These health-care workers were not wearing appropriate respiratory or skin protective equipment while caring for the patient. As a result, three health-care workers developed symptoms consistent with organophosphate intoxication and required treatment. This was the third episode reported during 2000 to the Georgia Poison Center of nosocomial poisoning of ED staff involved in the care of patients who had intentionally ingested a concentrated organophosphate mixed with xylene and other hydrocarbon solvents. Similar incidents have occurred elsewhere (1). During 1987–1998, the National Institute for Occupational Safety and Health identified 46 health-care workers who had acute pesticide-related illness after providing care to a pesticide-contaminated patient (G. Calvert, CDC, personal communication, 2000).

The Joint Commission on Accreditation of Healthcare Organizations requires hospitals to have a plan to manage contaminated patients (2); however, these recommendations do not include a plan to protect health-care workers caring for contaminated patients. During 1996–1998, surveys of hospitals in Georgia and at level 1 trauma centers nationally indicated that few acute care hospitals had trained staff, equipment, and procedures to safely care for contaminated patients (3–5).

Organophosphate Toxicity — Continued

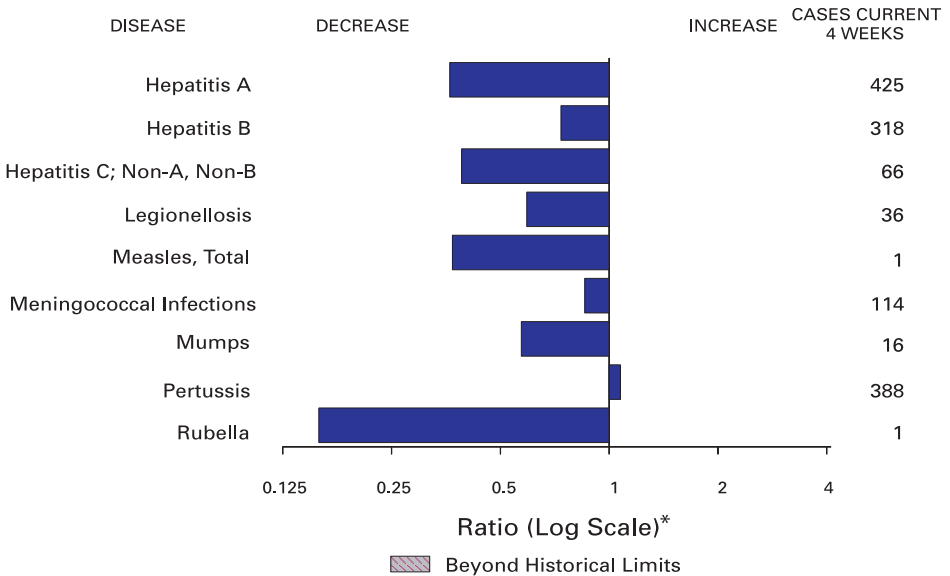
Depending on the extent of the contamination, health-care workers caring for chemically contaminated patients should use level C protection (i.e., full face mask and powered/nonpowered canister/cartridge filtration respirator) or level B protection (i.e., supplied air respirator or self-contained breathing apparatus) (6). The type of canister/cartridge should be appropriate to the agent; if the agent cannot be identified, an organic vapor/HEPA filter is recommended (6). To prevent dermal absorption, chemical barrier protection appropriate to the contaminant is needed; latex medical gloves are of little protection against many chemicals. In addition to the need for surface decontamination of patients, body fluids also must be contained to prevent dermal and inhalational exposure. To limit distant spread of the contaminant, the EDs ventilation exhaust should be directed away from the hospital's main ventilation system.

EDs may have to care for persons contaminated with chemicals resulting from self-inflicted contamination, industrial incidents, and terrorist events (7). To protect health-care workers caring for these patients, EDs should adhere to existing guidelines (6,8,9) and decontamination protocols, train staff in the use of PPE, and maintain adequate quantities of antidotes (10). If sufficient quantities of antidote are not available, the National Pharmaceutical Stockpile at CDC maintains a mechanism to procure and deliver large quantities of pharmaceuticals to state health departments within 12 hours. Coordination among health-care facilities, poison centers, and state and local health departments could provide surveillance of a chemical agent release, facilitate the expeditious procurement of supplies from outside sources, protect health-care workers, and inform the public about contaminants.

References

1. Burgess JL. Hospital evacuations due to hazardous materials incidents. *Am J Emerg Med* 1999;17:50–2.
2. Joint Commission on Accreditation of Healthcare Organizations. Accreditation standards for hospitals, 2000. Oakbrook Terrace, Illinois: Joint Commission on Accreditation of Healthcare Organizations, 2000; sections EC1.5e, EC1.5i, and EC1.6i.
3. Sharp TW, Brennan RJ, Keim M, Williams RJ, Eitzen E, Lillibridge S. Medical preparedness for a terrorist incident involving chemical or biological agents during the 1996 Atlanta Olympic games. *Ann Emerg Med* 1998;32:214–23.
4. Meehan P, Toomey KE, Drinnon J, Cunningham S, Anderson N, Baker E. Public health response for the 1996 Olympic games. *JAMA* 1998;279:1469–73.
5. Ghilarducci D, Pirallo R, Hegmann K. Hazardous materials readiness of United States level 1 trauma centers. *J Emerg Med* 2000;42:683–92.
6. Macintyre A, Christopher G, Eitzen E, et al. Weapons of mass destruction events with contaminated casualties. *JAMA* 2000;283:242–9.
7. Okumura T, Takasu N, Ishimatsu S, et al. Report on 640 victims of the Tokyo subway sarin attack. *Ann Emerg Med* 1996;28:129–35.
8. Burgess JL, Kirk M, Borron SW, Cisek J. Emergency department hazardous materials protocol for contaminated patients. *Ann Emerg Med* 1999;34:205–12.
9. Pons P, Dart RC. Chemical incidents in the emergency department: if and when. *Ann Emerg Med* 1999;34:223–5.
10. Dart RC, Goldfrank LR, Chyka PA, et al. Combined evidence based literature analysis and consensus guidelines for stocking of emergency antidotes in the United States. *Ann Emerg Med* 2000;36:126–32.

FIGURE I. Selected notifiable disease reports, United States, comparison of provisional 4-week totals ending December 23, 2000, with historical data



* Ratio of current 4-week total to mean of 15 4-week totals (from previous, comparable, and subsequent 4-week periods for the past 5 years). The point where the hatched area begins is based on the mean and two standard deviations of these 4-week totals.

TABLE I. Summary of provisional cases of selected notifiable diseases, United States, cumulative, week ending December 23, 2000 (51st Week)

	Cum. 2000		Cum. 2000
Anthrax	-	Poliomyelitis, paralytic	-
Brucellosis*	63	Psittacosis*	11
Cholera	2	Q fever*	22
Cyclosporiasis*	38	Rabies, human	2
Diphtheria	2	Rocky Mountain spotted fever (RMSF)	424
Ehrlichiosis: human granulocytic (HGE)*	188	Rubella, congenital syndrome	7
human monocytic (HME)*	99	Streptococcal disease, invasive, group A	2,664
Encephalitis: California serogroup viral*	110	Streptococcal toxic-shock syndrome*	70
eastern equine*	2	Syphilis, congenital†	257
St. Louis*	3	Tetanus	26
western equine*	-	Toxic-shock syndrome	124
Hansen disease (leprosy)*	63	Trichinosis	15
Hantavirus pulmonary syndrome*‡	30	Tularemia*	110
Hemolytic uremic syndrome, postdiarrheal*	189	Typhoid fever	315
HIV infection, pediatric*§	203	Yellow fever	-
Plague	6		

-: No reported cases.

*Not notifiable in all states.

† Updated weekly from reports to the Division of Viral and Rickettsial Diseases, National Center for Infectious Diseases (NCID).

‡ Updated monthly from reports to the Division of HIV/AIDS Prevention — Surveillance and Epidemiology, National Center for HIV, STD, and TB Prevention (NCHSTP). Last update November 26, 2000.

§ Updated from reports to the Division of STD Prevention, NCHSTP.

TABLE II. Provisional cases of selected notifiable diseases, United States, weeks ending December 23, 2000, and December 25, 1999 (51st Week)

Reporting Area	AIDS		Chlamydia*		Cryptosporidiosis		<i>Escherichia coli</i> O157:H7*			
	Cum. 2000 [†]	Cum. 1999	Cum. 2000	Cum. 1999	Cum. 2000	Cum. 1999	NETSS		PHLIS	
							Cum. 2000	Cum. 1999	Cum. 2000	Cum. 1999
UNITED STATES	36,091	42,848	631,069	639,647	2,512	2,611	4,341	3,903	3,243	2,711
NEW ENGLAND	1,884	2,205	22,020	20,727	106	185	386	402	370	363
Maine	38	80	1,368	1,039	20	31	31	39	28	-
N.H.	31	47	1,043	960	24	19	40	36	35	34
Vt.	37	19	519	475	28	36	36	32	37	21
Mass.	1,137	1,433	9,992	8,678	30	71	164	176	168	187
R.I.	95	108	2,409	2,300	4	6	19	27	18	26
Conn.	546	518	6,689	7,275	-	22	96	92	84	95
MID. ATLANTIC	7,705	11,074	55,189	64,599	185	608	406	616	285	165
Upstate N.Y.	705	1,378	N	N	131	178	297	522	76	16
N.Y. City	3,929	5,806	23,437	26,293	11	259	12	17	13	18
N.J.	1,592	2,034	8,433	12,201	12	54	97	77	109	72
Pa.	1,479	1,856	23,319	26,105	31	117	N	N	87	59
E.N. CENTRAL	3,442	3,170	103,615	108,590	804	630	996	978	598	530
Ohio	546	518	23,724	28,963	261	67	276	252	220	219
Ind.	352	340	12,648	11,741	58	41	134	104	83	67
Ill.	1,693	1,556	28,040	31,817	7	89	189	497	21	90
Mich.	652	618	25,322	21,774	97	52	138	125	104	85
Wis.	199	138	13,881	14,295	381	381	259	N	170	69
W.N. CENTRAL	813	970	34,420	37,073	358	198	688	529	612	544
Minn.	160	189	7,236	7,331	131	75	236	169	227	186
Iowa	86	75	4,579	4,804	77	55	181	113	147	80
Mo.	368	450	10,975	13,117	33	26	103	47	97	69
N. Dak.	3	7	750	913	16	18	21	17	20	18
S. Dak.	7	15	1,775	1,517	15	7	56	47	58	62
Nebr.	68	63	3,343	3,473	77	15	63	102	46	113
Kans.	121	171	5,762	5,918	9	2	28	34	18	16
S. ATLANTIC	10,157	11,804	123,416	133,203	469	380	371	332	270	188
Del.	199	158	2,760	2,715	6	-	1	6	1	3
Md.	1,197	1,512	13,435	12,742	14	17	32	42	1	4
D.C.	785	637	3,067	N	20	7	1	1	U	U
Va.	764	878	15,053	13,735	18	27	77	75	61	61
W. Va.	60	64	1,534	1,666	3	3	15	16	13	11
N.C.	667	793	20,654	21,448	28	34	90	74	68	52
S.C.	755	917	9,032	18,266	-	-	21	20	14	14
Ga.	1,117	1,587	26,174	31,559	170	143	43	35	36	3
Fla.	4,613	5,258	31,707	30,972	210	149	91	63	76	39
E.S. CENTRAL	1,809	1,896	47,921	45,290	49	47	148	141	114	104
Ky.	186	276	7,802	7,246	7	7	40	49	32	36
Tenn.	771	729	14,866	14,226	11	13	61	55	52	44
Ala.	457	472	14,239	12,339	16	15	11	28	9	21
Miss.	395	419	11,014	11,479	15	12	36	9	21	4
W.S. CENTRAL	3,708	4,331	96,162	91,668	123	91	182	140	233	171
Ark.	172	186	5,355	5,783	14	2	57	15	38	14
La.	649	855	17,285	16,122	10	24	9	14	53	15
Okla.	320	130	8,776	8,070	17	13	19	38	17	30
Tex.	2,567	3,160	64,746	61,693	82	52	97	73	125	112
MOUNTAIN	1,322	1,675	35,246	32,102	176	100	436	336	285	245
Mont.	14	13	1,437	1,496	10	13	31	25	-	-
Idaho	20	22	1,862	1,751	23	8	74	72	35	43
Wyo.	9	15	775	766	5	1	21	17	10	17
Colo.	300	319	8,490	6,051	72	14	163	113	111	89
N. Mex.	140	93	4,279	4,941	23	42	23	13	16	7
Ariz.	427	817	12,417	11,910	11	13	57	37	43	24
Utah	137	154	2,155	2,118	28	N	52	36	70	50
Nev.	275	242	3,831	3,069	4	9	15	23	-	15
PACIFIC	5,251	5,723	113,080	106,395	242	372	728	429	476	401
Wash.	480	336	12,898	11,688	N	N	223	164	200	183
Oreg.	171	225	5,140	5,986	21	96	157	68	114	69
Calif.	4,479	5,049	89,734	83,759	221	274	303	181	150	136
Alaska	22	14	2,415	1,839	-	-	30	1	1	1
Hawaii	99	99	2,893	3,123	-	-	15	15	11	12
Guam	15	18	-	468	-	-	N	N	U	U
P.R.	1,245	1,225	3,122	U	U	U	7	9	U	U
V.I.	32	36	U	U	U	U	U	U	U	U
Amer. Samoa	-	-	U	U	U	U	U	U	U	U
C.N.M.I.	-	-	U	U	U	U	U	U	U	U

N: Not notifiable. U: Unavailable. -: No reported cases. C.N.M.I.: Commonwealth of Northern Mariana Islands.

* Individual cases can be reported through both the National Electronic Telecommunications System for Surveillance (NETSS) and the Public Health Laboratory Information System (PHLIS).

† Chlamydia refers to genital infections caused by *C. trachomatis*. Totals reported to the Division of STD Prevention, NCHSTP.

‡ Updated monthly from reports to the Division of HIV/AIDS Prevention — Surveillance and Epidemiology, National Center for HIV, STD, and TB Prevention. Last update November 26, 2000.

TABLE II. (Cont'd) Provisional cases of selected notifiable diseases, United States, weeks ending December 23, 2000, and December 25, 1999 (51st Week)

Reporting Area	Gonorrhea		Hepatitis C; Non-A, Non-B		Legionellosis		Listeriosis	Lyme Disease	
	Cum. 2000 ^a	Cum. 1999	Cum. 2000	Cum. 1999	Cum. 2000	Cum. 1999	Cum. 2000	Cum. 2000	Cum. 1999
UNITED STATES	329,352	352,669	2,867	2,913	931	1,024	653	13,037	15,301
NEW ENGLAND	6,166	6,507	16	16	53	80	56	4,337	4,478
Maine	84	79	2	2	2	3	2	-	41
N.H.	105	111	-	-	4	8	4	69	24
Vt.	64	51	4	7	5	15	3	39	23
Mass.	2,745	2,415	4	4	16	27	27	1,098	781
R.I.	611	586	6	3	8	12	1	590	499
Conn.	2,557	3,265	-	-	18	15	19	2,541	3,110
MID. ATLANTIC	34,727	39,181	614	125	205	248	152	6,679	8,257
Upstate N.Y.	7,071	6,692	68	61	92	64	83	3,850	3,959
N.Y. City	10,265	12,019	-	-	-	43	29	105	135
N.J.	5,655	7,717	510	-	15	24	21	1,448	1,710
Pa.	11,736	12,753	36	64	98	117	19	1,276	2,453
E.N. CENTRAL	62,864	68,309	216	890	245	269	114	357	580
Ohio	14,321	17,885	12	4	117	83	59	88	45
Ind.	5,991	6,160	1	1	39	46	8	32	19
Ill.	19,114	22,649	19	47	9	31	11	11	17
Mich.	17,457	15,036	184	822	50	64	31	-	11
Wis.	5,981	6,579	-	16	30	45	5	226	488
W.N. CENTRAL	15,760	16,311	435	319	58	59	14	423	363
Minn.	2,820	2,779	7	12	7	13	5	322	240
Iowa	1,086	1,216	2	-	15	15	2	34	23
Mo.	7,584	8,053	409	303	25	20	5	44	72
N. Dak.	53	79	1	1	-	2	2	2	1
S. Dak.	270	192	-	-	2	3	-	-	-
Nebr.	1,320	1,434	6	3	4	6	-	4	11
Kans.	2,627	2,558	10	-	5	-	-	17	16
S. ATLANTIC	90,729	102,708	124	161	193	150	105	990	1,293
Del.	1,671	1,635	-	-	10	19	2	140	159
Md.	9,314	9,823	18	22	65	36	22	546	879
D.C.	2,666	3,487	3	1	7	5	-	11	6
Va.	9,891	9,402	3	11	33	40	8	146	118
W. Va.	494	556	16	19	N	N	5	34	18
N.C.	16,844	19,083	20	33	16	15	-	46	74
S.C.	11,071	14,749	3	22	6	11	9	17	6
Ga.	17,078	21,738	3	2	7	3	21	-	-
Fla.	21,700	22,235	58	51	49	21	38	50	33
E.S. CENTRAL	34,531	35,878	430	337	37	50	21	48	100
Ky.	3,411	3,285	36	25	20	22	4	12	19
Tenn.	11,704	11,377	100	118	12	22	13	28	57
Ala.	11,260	10,871	8	1	4	4	4	7	20
Miss.	8,156	10,345	286	193	1	2	-	1	4
W.S. CENTRAL	50,947	52,308	442	609	18	36	16	45	58
Ark.	2,920	3,162	9	28	-	1	1	4	5
La.	12,870	12,883	308	301	6	11	-	4	9
Okla.	3,968	3,970	10	16	5	5	7	1	8
Tex.	31,189	32,293	115	264	7	19	8	36	36
MOUNTAIN	9,670	9,426	411	221	47	48	39	31	16
Mont.	57	53	5	5	2	-	-	-	-
Idaho	95	89	3	8	5	3	-	4	3
Wyo.	51	40	318	77	2	-	1	9	3
Colo.	2,688	2,521	30	37	16	13	10	11	3
N. Mex.	958	958	16	34	1	1	2	-	1
Ariz.	4,100	4,238	21	46	8	7	17	-	2
Utah	230	238	2	6	12	18	4	3	2
Nev.	1,491	1,289	16	8	1	6	5	4	2
PACIFIC	23,958	22,041	179	235	75	84	136	127	156
Wash.	2,349	2,068	34	21	19	21	7	9	10
Oreg.	766	881	28	21	N	N	6	15	15
Calif.	20,109	18,343	115	193	56	61	120	101	131
Alaska	348	295	-	-	-	1	-	2	-
Hawaii	386	454	2	-	-	1	3	N	N
Guam	-	55	-	2	-	-	-	-	-
P.R.	577	317	1	-	1	-	-	N	N
V.I.	U	U	U	U	U	U	-	U	U
Amer. Samoa	U	U	U	U	U	U	-	U	U
C.N.M.I.	U	U	U	U	U	U	-	U	U

N: Not notifiable.

U: Unavailable.

- : No reported cases.

TABLE II. (Cont'd) Provisional cases of selected notifiable diseases, United States, weeks ending December 23, 2000, and December 25, 1999 (51st Week)

Reporting Area	Malaria		Rabies, Animal		Salmonellosis*			
	Cum. 2000	Cum. 1999	Cum. 2000	Cum. 1999	NETSS		PHLIS	
					Cum. 2000	Cum. 1999	Cum. 2000	Cum. 1999
UNITED STATES	1,252	1,484	5,786	6,476	36,310	38,202	30,469	32,354
NEW ENGLAND	66	64	813	876	2,163	2,202	2,152	2,226
Maine	6	3	132	176	126	131	97	104
N.H.	1	2	21	47	145	141	141	137
Vt.	4	4	57	88	110	92	119	82
Mass.	27	22	272	222	1,211	1,197	1,189	1,213
R.I.	8	5	61	95	141	129	158	166
Conn.	20	28	270	248	430	512	448	524
MID. ATLANTIC	262	422	1,127	1,282	4,001	5,359	4,424	5,206
Upstate N.Y.	81	72	806	910	1,213	1,402	1,281	1,353
N.Y. City	114	250	U	U	946	1,443	899	1,486
N.J.	36	57	194	180	841	1,195	821	1,105
Pa.	31	43	127	192	1,001	1,319	1,423	1,262
E. N. CENTRAL	126	167	163	167	5,173	5,323	3,416	4,639
Ohio	22	18	52	36	1,605	1,286	1,352	1,078
Ind.	6	22	15	13	623	531	571	474
Ill.	51	76	22	10	1,429	1,578	176	1,552
Mich.	33	41	68	87	879	969	921	958
Wis.	14	10	6	21	637	959	396	577
W. N. CENTRAL	67	80	531	720	2,353	2,224	2,473	2,375
Minn.	27	47	95	111	554	559	656	700
Iowa	2	13	79	150	366	252	312	228
Mo.	21	14	50	31	690	744	894	866
N. Dak.	2	-	115	141	63	51	75	62
S. Dak.	1	-	90	179	99	93	105	118
Nebr.	7	1	2	4	215	192	140	176
Kans.	7	5	100	104	366	333	291	225
S. ATLANTIC	342	348	2,334	2,102	8,112	8,670	5,352	6,402
Del.	5	1	49	56	110	166	140	157
Md.	126	101	406	391	826	846	768	876
D.C.	17	18	-	-	63	72	U	U
Va.	50	71	554	576	983	1,228	839	1,027
W. Va.	4	4	112	112	171	169	148	150
N.C.	36	34	551	433	1,138	1,310	1,096	1,293
S.C.	2	15	155	133	740	659	540	519
Ga.	30	29	344	231	1,499	1,584	1,570	1,679
Fla.	72	75	163	170	2,582	2,636	251	701
E. S. CENTRAL	47	27	204	254	2,400	2,205	1,668	1,455
Ky.	18	7	21	35	381	412	282	291
Tenn.	12	9	103	95	671	573	755	583
Ala.	16	7	79	122	678	599	521	482
Miss.	1	4	1	2	670	621	130	99
W. S. CENTRAL	20	61	77	498	3,962	3,705	4,094	2,772
Ark.	3	3	20	14	704	656	632	261
La.	8	10	-	-	262	721	768	607
Okla.	9	2	57	93	390	452	289	350
Tex.	-	46	-	391	2,606	1,876	2,405	1,554
MOUNTAIN	52	45	249	215	2,786	3,010	2,199	2,590
Mont.	1	4	65	59	96	83	-	1
Idaho	4	3	9	5	130	134	97	97
Wyo.	-	1	56	44	72	70	51	59
Colo.	25	18	-	1	690	716	665	700
N. Mex.	-	3	21	9	235	364	182	291
Ariz.	9	7	79	81	808	895	734	814
Utah	6	4	10	8	497	552	470	579
Nev.	7	5	9	8	258	196	-	49
PACIFIC	270	270	288	362	5,360	5,504	4,691	4,689
Wash.	33	27	-	-	579	656	670	837
Oreg.	41	22	7	4	304	420	348	467
Calif.	185	208	258	349	4,183	4,044	3,424	3,070
Alaska	-	1	23	9	61	54	23	33
Hawaii	11	12	-	-	233	330	226	282
Guam	-	1	-	-	-	37	U	U
P.R.	5	2	80	73	620	659	U	U
V.I.	U	U	U	U	U	U	U	U
Amer. Samoa	U	U	U	U	U	U	U	U
C.N.M.I.	U	U	U	U	U	U	U	U

N: Not notifiable. U: Unavailable. -: No reported cases.

* Individual cases can be reported through both the National Electronic Telecommunications System for Surveillance (NETSS) and the Public Health Laboratory Information System (PHLIS).

TABLE II. (Cont'd) Provisional cases of selected notifiable diseases, United States, weeks ending December 23, 2000, and December 25, 1999 (51st Week)

Reporting Area	Shigellosis*				Syphilis (Primary & Secondary)		Tuberculosis	
	NETSS		PHLIS		Cum. 2000	Cum. 1999	Cum. 2000	Cum. 1999
	Cum. 2000	Cum. 1999	Cum. 2000	Cum. 1999				
UNITED STATES	20,373	16,372	10,401	9,901	5,788	6,517	12,662	15,252
NEW ENGLAND	391	871	372	839	86	59	436	427
Maine	11	5	12	-	1	-	12	20
N.H.	7	19	8	17	2	1	18	18
Vt.	4	7	-	4	-	3	4	3
Mass.	272	740	247	720	61	36	279	234
R.I.	29	31	38	28	4	3	32	42
Conn.	68	69	67	70	18	16	91	110
MID. ATLANTIC	2,081	1,132	1,333	736	264	293	2,296	2,524
Upstate N.Y.	782	287	213	83	15	19	315	307
N.Y. City	716	349	476	234	121	129	1,229	1,302
N.J.	389	290	384	236	50	67	544	532
Pa.	194	206	260	183	78	78	208	383
E.N. CENTRAL	3,829	3,221	1,211	1,800	1,129	1,219	1,337	1,601
Ohio	442	414	312	147	69	90	263	266
Ind.	1,511	339	147	114	345	440	110	132
Ill.	995	1,316	103	991	355	418	654	788
Mich.	649	521	590	473	315	230	229	315
Wis.	232	631	59	75	45	41	81	100
W.N. CENTRAL	2,403	1,208	1,932	801	59	133	477	546
Minn.	774	237	867	253	13	10	165	195
Iowa	541	71	316	61	11	9	35	58
Mo.	640	708	469	350	27	95	196	188
N. Dak.	51	3	51	2	-	-	5	6
S. Dak.	8	18	4	10	-	-	16	21
Nebr.	142	85	84	68	2	6	23	17
Kans.	247	86	141	57	6	13	37	61
S. ATLANTIC	2,964	2,379	1,110	530	1,932	2,061	2,677	3,099
Del.	23	15	23	10	8	8	14	26
Md.	207	160	115	58	296	340	242	262
D.C.	80	51	U	U	48	45	37	53
Va.	445	130	331	66	126	153	258	268
W. Va.	22	8	17	5	2	5	31	41
N.C.	389	206	265	93	469	453	447	488
S.C.	136	119	87	63	212	249	135	226
Ga.	257	237	167	83	377	439	566	577
Fla.	1,405	1,453	105	152	394	369	947	1,158
E.S. CENTRAL	1,155	1,189	528	690	860	1,130	859	1,025
Ky.	510	233	115	149	82	101	114	190
Tenn.	343	661	357	467	521	642	305	348
Ala.	100	117	49	63	123	202	303	302
Miss.	202	178	7	11	134	185	137	185
W.S. CENTRAL	2,893	2,657	2,616	1,189	802	1,033	1,022	1,771
Ark.	203	74	58	26	94	85	159	167
La.	138	224	194	136	204	303	74	245
Okla.	125	526	44	167	126	184	130	180
Tex.	2,427	1,833	2,320	860	378	461	659	1,179
MOUNTAIN	1,311	1,136	756	762	225	233	501	533
Mont.	8	10	-	-	-	1	17	13
Idaho	45	27	25	12	1	1	13	15
Wyo.	5	3	3	1	1	-	4	3
Colo.	265	200	206	160	11	4	70	75
N. Mex.	180	149	99	106	21	11	36	61
Ariz.	606	585	342	410	185	209	224	234
Utah	82	64	81	67	1	2	48	39
Nev.	120	98	-	6	5	5	89	93
PACIFIC	3,346	2,579	543	2,554	431	356	3,057	3,726
Wash.	457	125	405	112	68	65	239	244
Oreg.	167	94	105	89	6	7	25	104
Calif.	2,674	2,321	-	2,315	355	280	2,568	3,137
Alaska	8	4	3	4	-	1	96	59
Hawaii	40	35	30	34	2	3	129	182
Guam	-	19	U	U	-	-	-	70
P.R.	32	138	U	U	159	145	119	178
V.I.	U	U	U	U	U	U	U	U
Amer. Samoa	U	U	U	U	U	U	U	U
C.N.M.I.	U	U	U	U	U	U	U	U

N: Not notifiable. U: Unavailable. -: No reported cases.

*Individual cases can be reported through both the National Electronic Telecommunications System for Surveillance (NETSS) and the Public Health Laboratory Information System (PHLIS).

TABLE III. Provisional cases of selected notifiable diseases preventable by vaccination, United States, weeks ending December 23, 2000, and December 25, 1999 (51st Week)

Reporting Area	<i>H. influenzae</i> , Invasive		Hepatitis (Viral), By Type				Measles (Rubeola)					
	Cum. 2000 ¹	Cum. 1999	A		B		Indigenous		Imported*		Total	
			Cum. 2000	Cum. 1999	Cum. 2000	Cum. 1999	2000	Cum. 2000	2000	Cum. 2000	Cum. 2000	Cum. 1999
UNITED STATES	1,192	1,198	12,103	16,061	6,550	6,796	-	62	-	18	80	94
NEW ENGLAND	106	98	362	346	100	139	-	3	-	4	7	11
Maine	2	8	21	14	5	1	-	-	-	-	-	-
N.H.	12	18	19	18	19	16	-	2	-	1	3	1
Vt.	10	6	10	23	6	4	-	-	-	3	3	-
Mass.	40	39	123	139	19	44	-	1	-	-	1	8
R.I.	4	6	25	26	23	33	-	-	-	-	-	-
Conn.	38	21	164	126	28	41	-	-	-	-	-	2
MID. ATLANTIC	188	201	1,079	1,159	846	890	-	15	-	5	20	5
Upstate N.Y.	101	81	228	269	145	181	-	9	-	-	9	2
N.Y. City	42	57	375	394	428	282	-	6	-	4	10	3
N.J.	33	56	100	148	57	137	-	-	-	-	-	-
Pa.	12	7	376	348	216	280	-	-	-	1	1	-
E.N. CENTRAL	151	202	1,511	2,916	717	723	-	9	-	-	9	4
Ohio	54	62	268	647	105	94	-	2	-	-	2	-
Ind.	30	28	119	102	49	42	-	-	-	-	-	2
Ill.	54	35	630	840	123	52	-	4	-	-	4	1
Mich.	10	20	481	1,250	439	505	-	3	-	-	3	1
Wis.	3	7	13	77	1	30	-	-	-	-	-	-
W.N. CENTRAL	73	76	704	1,062	534	356	-	3	-	2	5	1
Minn.	43	47	185	109	43	56	-	-	-	1	1	1
Iowa	1	2	67	145	32	42	-	2	-	-	2	-
Mo.	17	12	302	684	387	217	-	-	-	-	-	-
N. Dak.	4	1	4	3	2	2	-	-	-	-	-	-
S. Dak.	1	2	3	9	2	1	-	-	-	-	-	-
Nebr.	3	4	34	49	44	21	-	-	-	-	-	-
Kans.	4	8	109	63	24	17	-	1	-	1	2	-
S. ATLANTIC	300	255	1,541	1,879	1,312	1,135	-	4	-	-	4	20
Del.	-	-	-	2	-	1	-	-	-	-	-	-
Md.	77	68	223	304	125	146	-	-	-	-	-	-
D.C.	-	5	35	59	34	25	-	-	-	-	-	-
Va.	39	22	154	175	162	97	-	2	-	-	2	18
W. Va.	9	7	55	40	21	24	U	-	U	-	-	-
N.C.	23	36	150	162	250	224	-	-	-	-	-	-
S.C.	15	6	86	46	23	63	-	-	-	-	-	-
Ga.	73	68	289	456	222	175	-	-	-	-	-	-
Fla.	64	43	549	635	475	380	-	2	-	-	2	2
E.S. CENTRAL	53	68	400	397	473	468	-	-	-	-	-	2
Ky.	12	8	50	66	78	46	-	-	-	-	-	2
Tenn.	26	39	147	147	218	207	-	-	-	-	-	-
Ala.	14	18	62	60	70	86	-	-	-	-	-	-
Miss.	1	3	141	124	107	129	-	-	-	-	-	-
W.S. CENTRAL	58	62	2,224	2,992	706	1,108	-	-	-	-	-	12
Ark.	2	2	112	76	78	88	U	-	U	-	-	5
La.	11	15	60	212	93	171	-	-	-	-	-	-
Okla.	43	41	256	504	154	145	U	-	U	-	-	-
Tex.	2	4	1,796	2,200	381	704	U	-	U	-	-	7
MOUNTAIN	121	110	1,011	1,227	577	554	-	12	-	1	13	2
Mont.	1	3	7	17	7	17	-	-	-	-	-	-
Idaho	4	1	44	45	10	29	-	-	-	-	-	-
Wyo.	1	1	47	9	41	14	-	-	-	-	-	-
Colo.	21	15	207	216	110	98	-	2	-	1	3	-
N. Mex.	25	19	70	53	116	175	-	-	-	-	-	-
Ariz.	52	58	489	679	213	132	-	-	-	-	-	1
Utah	11	9	64	63	28	34	-	3	-	-	3	-
Nev.	6	4	83	145	52	55	-	7	-	-	7	1
PACIFIC	142	126	3,271	4,083	1,285	1,433	-	16	-	6	22	37
Wash.	8	8	279	390	114	78	-	2	-	1	3	5
Oreg.	30	41	181	248	127	116	-	-	-	-	-	12
Calif.	33	54	2,787	3,408	1,021	1,206	-	13	-	2	15	17
Alaska	45	9	11	13	12	17	-	1	-	-	1	-
Hawaii	26	14	13	24	11	16	-	-	-	3	3	3
Guam	-	-	-	1	-	4	U	-	U	-	-	1
P.R.	4	2	230	355	259	254	U	-	U	-	-	-
V.I.	U	U	U	U	U	U	U	U	U	U	U	U
Amer. Samoa	U	U	U	U	U	U	U	U	U	U	U	U
C.N.M.I.	U	U	U	U	U	U	U	U	U	U	U	U

N: Not notifiable. U: Unavailable. -: No reported cases.

*For imported measles, cases include only those resulting from importation from other countries.

¹Of 249 cases among children aged <5 years, serotype was reported for 109 and of those, 24 were type b.

TABLE III. (Cont'd) Provisional cases of selected notifiable diseases preventable by vaccination, United States, weeks ending December 23, 2000, and December 25, 1999 (51st Week)

Reporting Area	Meningococcal Disease		Mumps			Pertussis			Rubella		
	Cum. 2000	Cum. 1999	2000	Cum. 2000	Cum. 1999	2000	Cum. 2000	Cum. 1999	2000	Cum. 2000	Cum. 1999
UNITED STATES	1,999	2,287	5	315	372	155	6,592	6,614	-	152	250
NEW ENGLAND	123	110	1	5	9	8	1,602	882	-	13	7
Maine	8	5	-	-	-	-	45	-	-	-	-
N.H.	12	13	-	-	2	-	125	96	-	2	-
Vt.	4	5	-	-	1	5	249	90	-	-	-
Mass.	72	64	-	1	4	1	1,114	626	-	9	7
R.I.	9	7	-	1	2	1	23	38	-	1	-
Conn.	18	16	1	3	-	1	46	32	-	1	-
MID. ATLANTIC	192	226	1	27	45	17	658	1,078	-	10	36
Upstate N.Y.	65	72	1	12	12	7	320	804	-	2	21
N.Y. City	37	57	-	6	12	-	76	60	-	8	7
N.J.	45	51	-	3	2	-	42	29	-	-	5
Pa.	45	46	-	6	19	10	220	185	-	-	3
E.N. CENTRAL	354	402	1	31	52	55	782	693	-	1	2
Ohio	96	131	1	8	20	48	369	317	-	-	-
Ind.	48	64	-	1	5	7	126	88	-	-	1
Ill.	79	109	-	6	14	-	82	102	-	1	1
Mich.	105	61	-	16	9	-	123	71	-	-	-
Wis.	26	37	-	-	4	-	82	115	-	-	-
W.N. CENTRAL	152	227	1	20	14	43	628	495	-	3	130
Minn.	21	48	-	-	1	34	398	234	-	1	5
Iowa	34	40	1	8	8	-	56	98	-	-	30
Mo.	70	91	-	4	1	5	84	73	-	1	2
N. Dak.	2	4	-	-	1	-	7	18	-	-	-
S. Dak.	6	11	-	-	-	4	11	7	-	-	-
Nebr.	8	11	-	4	-	-	32	9	-	1	92
Kans.	11	22	-	4	3	-	40	56	-	-	1
S. ATLANTIC	316	392	-	48	50	-	516	441	-	95	37
Del.	1	10	-	-	-	-	9	6	-	1	-
Md.	27	53	-	10	6	-	135	120	-	-	1
D.C.	-	4	-	-	2	-	3	1	-	-	-
Va.	42	55	-	11	10	-	112	51	-	-	-
W. Va.	12	8	U	-	-	U	1	4	U	-	-
N.C.	38	47	-	7	9	-	110	102	-	82	36
S.C.	26	44	-	11	5	-	41	27	-	10	-
Ga.	47	63	-	2	4	-	40	40	-	-	-
Fla.	123	108	-	7	14	-	65	90	-	2	-
E.S. CENTRAL	133	157	-	8	15	5	112	112	-	5	2
Ky.	26	34	-	1	-	2	56	43	-	1	-
Tenn.	56	64	-	2	-	2	34	45	-	1	-
Ala.	37	36	-	3	11	1	21	21	-	3	2
Miss.	14	23	-	2	4	-	1	3	-	-	-
W.S. CENTRAL	131	213	-	31	46	-	338	215	-	6	15
Ark.	14	35	U	5	-	U	36	25	U	-	5
La.	35	67	-	4	11	-	12	9	-	1	-
Okla.	28	36	U	-	3	U	41	41	U	-	1
Tex.	54	75	U	22	32	U	249	140	U	5	9
MOUNTAIN	168	139	1	27	26	22	818	794	-	2	16
Mont.	6	4	-	1	-	-	35	2	-	-	-
Idaho	7	13	-	1	3	-	64	145	-	-	-
Wyo.	4	5	-	4	-	-	6	2	-	-	-
Colo.	34	36	1	3	6	-	457	297	-	1	1
N. Mex.	12	16	-	1	N	-	89	153	-	-	-
Ariz.	92	41	-	4	8	21	120	123	-	1	13
Utah	8	16	-	7	4	1	32	58	-	-	1
Nev.	5	8	-	6	5	-	15	14	-	-	-
PACIFIC	430	421	-	118	115	5	1,138	1,904	-	17	5
Wash.	65	65	-	11	2	4	420	649	-	7	-
Oreg.	76	76	N	N	N	1	114	61	-	-	-
Calif.	272	263	-	86	94	-	550	1,138	-	10	5
Alaska	9	8	-	7	3	-	22	5	-	-	-
Hawaii	8	9	-	14	16	-	32	51	-	-	-
Guam	-	1	U	-	3	U	-	2	U	-	-
P.R.	9	13	U	-	-	-	7	31	U	-	-
V.I.	U	U	U	U	U	U	U	U	U	U	U
Amer. Samoa	U	U	U	U	U	U	U	U	U	U	U
C.N.M.I.	U	U	U	U	U	U	U	U	U	U	U

N: Not notifiable.

U: Unavailable.

-: No reported cases.

**TABLE IV. Deaths in 122 U.S. cities,* week ending
December 23, 2000 (51st Week)**

Reporting Area	All Causes, By Age (Years)						P&I [†] Total	Reporting Area	All Causes, By Age (Years)						P&I [†] Total
	All Ages	≥65	45-64	25-44	1-24	<1			All Ages	≥65	45-64	25-44	1-24	<1	
NEW ENGLAND	461	324	91	32	5	9	62	S. ATLANTIC	1,110	681	267	104	34	24	89
Boston, Mass.	161	96	41	18	2	4	30	Atlanta, Ga.	137	76	41	16	2	2	8
Bridgeport, Conn.	U	U	U	U	U	U	U	Baltimore, Md.	176	104	43	20	5	4	23
Cambridge, Mass.	16	9	6	-	-	1	1	Charlotte, N.C.	123	84	25	9	2	3	14
Fall River, Mass.	31	27	1	2	1	-	3	Jacksonville, Fla.	147	91	37	10	8	1	12
Hartford, Conn.	U	U	U	U	U	U	U	Miami, Fla.	95	52	25	11	6	1	11
Lowell, Mass.	33	25	7	1	-	-	5	Norfolk, Va.	58	39	14	1	1	3	1
Lynn, Mass.	16	13	2	1	-	-	2	Richmond, Va.	U	U	U	U	U	U	U
New Bedford, Mass.	23	19	3	1	-	-	2	Savannah, Ga.	66	45	14	6	1	-	9
New Haven, Conn.	36	26	4	2	1	3	5	St. Petersburg, Fla.	U	U	U	U	U	U	U
Providence, R.I.	U	U	U	U	U	U	U	Tampa, Fla.	191	126	37	19	3	6	10
Somerville, Mass.	9	7	1	1	-	-	-	Washington, D.C.	100	52	26	12	6	4	1
Springfield, Mass.	60	42	13	4	-	1	8	Wilmington, Del.	17	12	5	-	-	-	-
Waterbury, Conn.	23	16	6	-	1	-	3	E.S. CENTRAL	747	510	150	50	19	18	56
Worcester, Mass.	53	44	7	2	-	-	3	Birmingham, Ala.	176	125	33	8	2	8	14
MID. ATLANTIC	2,245	1,601	407	153	35	49	117	Chattanooga, Tenn.	67	48	13	3	1	2	10
Albany, N.Y.	53	36	12	3	-	2	3	Knoxville, Tenn.	128	98	21	7	2	-	12
Allentown, Pa.	18	17	1	-	-	-	1	Lexington, Ky.	87	52	24	3	3	5	5
Buffalo, N.Y.	77	51	20	4	2	-	2	Memphis, Tenn.	158	90	40	21	5	2	6
Camden, N.J.	18	8	4	4	1	1	1	Mobile, Ala.	98	72	12	8	5	1	5
Elizabeth, N.J.	13	8	3	1	-	1	-	Montgomery, Ala.	33	25	7	-	1	-	4
Erie, Pa.§	51	40	8	2	-	1	6	Nashville, Tenn.	U	U	U	U	U	U	U
Jersey City, N.J.	38	28	6	2	-	2	-	W.S. CENTRAL	1,637	1,104	304	122	68	39	115
New York City, N.Y.	1,263	901	230	90	19	23	61	Austin, Tex.	89	63	17	7	-	2	8
Newark, N.J.	56	28	14	12	-	2	1	Baton Rouge, La.	111	74	20	10	5	2	2
Paterson, N.J.	14	7	6	-	1	-	-	Corpus Christi, Tex.	60	44	10	3	-	3	6
Philadelphia, Pa.	246	175	43	19	5	4	17	Dallas, Tex.	198	131	38	16	5	8	15
Pittsburgh, Pa.§	77	54	14	4	2	3	3	El Paso, Tex.	84	57	16	6	3	2	5
Reading, Pa.	18	12	3	1	1	1	-	Ft. Worth, Tex.	132	99	22	6	2	3	6
Rochester, N.Y.	138	108	20	5	2	3	9	Houston, Tex.	402	222	83	43	45	9	29
Schenectady, N.Y.	33	28	5	-	-	-	2	Little Rock, Ark.	U	U	U	U	U	U	U
Scranton, Pa.§	25	17	5	2	-	1	-	New Orleans, La.	U	U	U	U	U	U	U
Syracuse, N.Y.	73	60	8	1	-	4	8	San Antonio, Tex.	275	194	51	18	6	6	17
Trenton, N.J.	12	6	1	2	2	1	1	Shreveport, La.	123	92	21	7	1	2	9
Utica, N.Y.	22	17	4	1	-	-	2	Tulsa, Okla.	163	128	26	6	1	2	18
Yonkers, N.Y.	U	U	U	U	U	U	U	MOUNTAIN	1,056	759	169	73	27	28	66
E.N. CENTRAL	1,868	1,314	357	119	40	36	124	Albuquerque, N.M.	118	86	18	12	2	-	7
Akron, Ohio	58	44	10	1	1	1	5	Boise, Idaho	51	38	8	3	-	2	5
Canton, Ohio	55	47	8	-	-	-	11	Colo. Springs, Colo.	59	51	3	4	1	-	3
Chicago, Ill.	U	U	U	U	U	U	U	Denver, Colo.	122	83	24	6	7	2	8
Cincinnati, Ohio	114	78	17	12	5	2	8	Las Vegas, Nev.	196	132	44	13	2	5	10
Cleveland, Ohio	155	110	27	14	1	3	3	Ogden, Utah	38	26	7	3	-	2	2
Columbus, Ohio	258	183	52	15	4	4	15	Phoenix, Ariz.	166	113	21	15	9	8	14
Dayton, Ohio	145	100	28	12	1	4	9	Pueblo, Colo.	28	24	3	-	1	-	2
Detroit, Mich.	183	96	48	27	8	4	15	Salt Lake City, Utah	107	83	11	5	2	6	7
Evansville, Ind.	56	43	8	4	-	1	5	Tucson, Ariz.	171	123	30	12	3	3	8
Fort Wayne, Ind.	71	52	16	2	1	-	2	PACIFIC	2,131	1,531	394	122	43	36	176
Gary, Ind.	17	11	4	-	-	1	1	Berkeley, Calif.	17	13	3	-	-	1	-
Grand Rapids, Mich.	62	52	3	1	3	3	5	Fresno, Calif.	135	99	28	3	3	2	7
Indianapolis, Ind.	204	126	48	14	10	6	18	Glendale, Calif.	40	31	7	2	-	-	-
Lansing, Mich.	40	29	6	4	-	1	5	Honolulu, Hawaii	61	42	12	2	2	3	3
Milwaukee, Wis.	111	80	23	4	1	3	2	Long Beach, Calif.	77	59	11	3	1	3	9
Peoria, Ill.	46	35	8	2	-	1	3	Los Angeles, Calif.	685	487	126	44	18	10	36
Rockford, Ill.	52	36	12	4	-	-	7	Pasadena, Calif.	30	21	5	-	1	3	4
South Bend, Ind.	48	39	8	1	-	-	1	Portland, Oreg.	163	114	36	11	2	-	8
Toledo, Ohio	121	96	20	1	4	-	7	Sacramento, Calif.	213	153	41	10	4	5	41
Youngstown, Ohio	72	57	11	1	1	2	2	San Diego, Calif.	184	132	33	10	3	5	22
W.N. CENTRAL	649	449	129	36	24	11	50	San Francisco, Calif.	U	U	U	U	U	U	U
Des Moines, Iowa	83	59	19	2	2	1	12	San Jose, Calif.	173	128	30	12	3	-	20
Duluth, Minn.	34	24	7	2	-	1	-	Santa Cruz, Calif.	35	30	3	2	-	-	6
Kansas City, Kans.	31	19	7	4	-	1	4	Seattle, Wash.	141	94	32	10	2	3	8
Kansas City, Mo.	70	42	14	6	7	1	4	Spokane, Wash.	61	49	8	3	-	1	9
Lincoln, Nebr.	34	25	5	3	-	1	6	Tacoma, Wash.	116	79	19	10	4	-	3
Minneapolis, Minn.	111	87	16	4	3	1	5	TOTAL	11,904 [†]	8,273	2,268	811	295	250	855
Omaha, Nebr.	95	71	18	3	-	3	10								
St. Louis, Mo.	117	74	29	7	7	-	5								
St. Paul, Minn.	U	U	U	U	U	U	U								
Wichita, Kans.	74	48	14	5	5	2	4								

U: Unavailable. -: No reported cases.

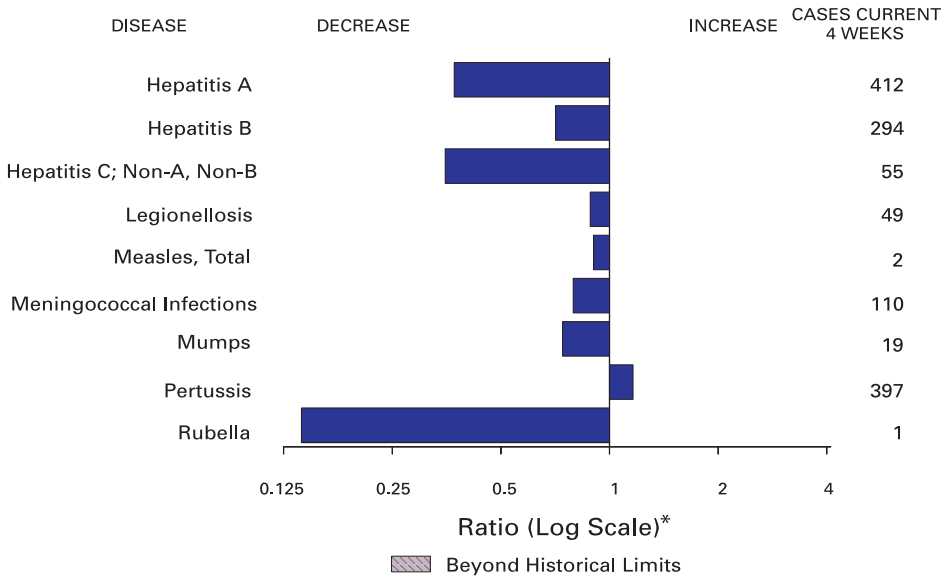
*Mortality data in this table are voluntarily reported from 122 cities in the United States, most of which have populations of ≥100,000. A death is reported by the place of its occurrence and by the week that the death certificate was filed. Fetal deaths are not included.

[†]Pneumonia and influenza.

[‡]Because of changes in reporting methods in this Pennsylvania city, these numbers are partial counts for the current week. Complete counts will be available in 4 to 6 weeks.

[§]Total includes unknown ages.

FIGURE I. Selected notifiable disease reports, United States, comparison of provisional 4-week totals ending December 30, 2000, with historical data



* Ratio of current 4-week total to mean of 15 4-week totals (from previous, comparable, and subsequent 4-week periods for the past 5 years). The point where the hatched area begins is based on the mean and two standard deviations of these 4-week totals.

TABLE I. Summary of provisional cases of selected notifiable diseases, United States, cumulative, week ending December 30, 2000 (52nd Week)

	Cum. 2000		Cum. 2000
Anthrax	-	Poliomyelitis, paralytic	-
Brucellosis*	63	Psittacosis*	11
Cholera	2	Q fever*	22
Cyclosporiasis*	39	Rabies, human	2
Diphtheria	2	Rocky Mountain spotted fever (RMSF)	428
Ehrlichiosis: human granulocytic (HGE)*	192	Rubella, congenital syndrome	7
human monocytic (HME)*	102	Streptococcal disease, invasive, group A	2,701
Encephalitis: California serogroup viral*	109	Streptococcal toxic-shock syndrome*	70
eastern equine*	2	Syphilis, congenital†	277
St. Louis*	3	Tetanus	26
western equine*	-	Toxic-shock syndrome	125
Hansen disease (leprosy)*	64	Trichinosis	15
Hantavirus pulmonary syndrome*‡	30	Tularemia*	111
Hemolytic uremic syndrome, postdiarrheal*	188	Typhoid fever	317
HIV infection, pediatric*§	203	Yellow fever	-
Plague	6		

-: No reported cases.

*Not notifiable in all states.

† Updated weekly from reports to the Division of Viral and Rickettsial Diseases, National Center for Infectious Diseases (NCID).

‡ Updated monthly from reports to the Division of HIV/AIDS Prevention — Surveillance and Epidemiology, National Center for HIV, STD, and TB Prevention (NCHSTP). Last update November 26, 2000.

§ Updated from reports to the Division of STD Prevention, NCHSTP.

TABLE II. Provisional cases of selected notifiable diseases, United States, weeks ending December 30, 2000, and January 1, 2000 (52nd Week)

Reporting Area	AIDS		Chlamydia*		Cryptosporidiosis		Escherichia coli O157:H7*			
	Cum. 2000 [†]	Cum. 1999	Cum. 2000	Cum. 1999	Cum. 2000	Cum. 1999	NETSS		PHLIS	
							Cum. 2000	Cum. 1999	Cum. 2000	Cum. 1999
UNITED STATES	36,091	44,823	642,588	658,026	2,573	2,765	4,410	4,513	3,269	2,735
NEW ENGLAND	1,884	2,271	22,423	21,241	106	186	387	404	370	367
Maine	38	80	1,368	1,220	20	31	41	40	28	1
N.H.	31	47	1,079	976	24	20	41	36	35	34
Vt.	37	20	525	485	28	36	36	32	37	21
Mass.	1,137	1,433	10,075	8,793	30	71	164	177	168	188
R.I.	95	108	2,481	2,345	4	6	19	27	18	26
Conn.	546	583	6,895	7,422	-	22	96	92	84	97
MID. ATLANTIC	7,705	11,702	55,445	66,010	192	629	407	1,034	288	168
Upstate N.Y.	705	1,690	N	N	134	192	297	939	79	18
N.Y. City	3,929	6,014	23,694	26,776	13	260	12	17	13	18
N.J.	1,592	2,035	8,432	12,424	14	54	98	78	109	73
Pa.	1,479	1,963	23,319	26,810	31	123	N	N	87	59
E.N. CENTRAL	3,442	3,265	105,834	111,895	813	642	1,016	994	606	532
Ohio	546	552	24,278	29,398	262	67	280	252	220	219
Ind.	352	362	12,892	12,059	59	47	138	107	87	67
Ill.	1,693	1,559	28,306	32,869	7	90	193	498	21	92
Mich.	652	641	26,447	23,107	98	52	139	127	104	85
Wis.	199	151	13,911	14,462	387	386	266	N	174	69
W.N. CENTRAL	813	1,065	34,948	38,503	376	217	728	595	619	549
Minn.	160	189	7,358	7,450	146	91	266	175	228	188
Iowa	86	85	4,761	5,511	77	56	181	114	148	81
Mo.	368	530	10,975	13,355	35	26	110	47	98	70
N. Dak.	3	7	771	934	16	20	21	19	20	19
S. Dak.	7	16	1,827	1,544	15	7	56	47	58	62
Nebr.	68	67	3,435	3,616	78	15	66	159	49	113
Kans.	121	171	5,821	6,093	9	2	28	34	18	16
S. ATLANTIC	10,157	12,406	125,772	135,931	486	452	374	357	275	190
Del.	199	184	2,856	2,761	6	1	1	6	1	3
Md.	1,197	1,522	13,758	13,180	14	17	33	43	1	4
D.C.	785	834	3,208	N	20	7	1	1	U	U
Va.	764	938	15,347	13,735	20	30	76	79	66	63
W. Va.	60	69	1,587	1,803	3	3	15	16	13	11
N.C.	667	796	20,654	21,817	28	35	90	74	68	53
S.C.	755	957	9,032	18,489	-	-	21	22	14	14
Ga.	1,117	1,681	26,679	32,403	178	170	43	43	36	3
Fla.	4,613	5,425	32,651	31,743	217	189	94	73	76	39
E.S. CENTRAL	1,809	1,924	48,858	45,528	49	48	148	142	116	105
Ky.	186	277	7,802	7,378	7	7	40	50	32	35
Tenn.	771	756	14,866	14,232	11	13	61	55	54	45
Ala.	457	472	14,745	12,375	16	16	11	28	9	21
Miss.	395	419	11,445	11,543	15	12	36	9	21	4
W.S. CENTRAL	3,708	4,358	98,030	93,304	124	109	182	174	234	176
Ark.	172	194	5,440	5,865	15	2	57	15	38	14
La.	649	855	17,921	16,286	10	24	9	14	54	15
Okla.	320	148	9,061	8,195	17	14	19	40	17	30
Tex.	2,567	3,161	65,608	62,958	82	69	97	105	125	117
MOUNTAIN	1,322	1,739	36,166	37,372	182	105	435	346	285	245
Mont.	14	13	1,468	1,591	10	13	31	25	-	-
Idaho	20	25	1,907	1,777	28	8	74	78	35	43
Wyo.	9	15	779	787	5	1	21	17	10	17
Colo.	300	319	8,494	10,848	72	14	162	115	111	89
N. Mex.	140	93	4,767	5,015	24	44	23	13	16	7
Ariz.	427	878	12,610	12,049	11	16	57	37	43	24
Utah	137	154	2,158	2,219	28	N	52	36	70	50
Nev.	275	242	3,983	3,086	4	9	15	25	-	15
PACIFIC	5,251	6,093	115,112	108,242	245	377	733	467	476	403
Wash.	480	359	13,102	11,964	N	N	228	186	200	185
Oreg.	171	225	5,515	6,127	21	98	157	68	114	69
Calif.	4,479	5,396	91,164	85,100	224	279	303	197	150	136
Alaska	22	14	2,438	1,886	-	-	30	1	1	1
Hawaii	99	99	2,893	3,165	-	-	15	15	11	12
Guam	15	18	-	468	-	-	N	N	U	U
P.R.	1,245	1,247	3,235	U	-	-	7	9	U	U
V.I.	32	39	U	U	U	U	U	U	U	U
Amer. Samoa	-	-	U	U	U	U	U	U	U	U
C.N.M.I.	-	-	U	U	U	U	U	U	U	U

N: Not notifiable. U: Unavailable. -: No reported cases. C.N.M.I.: Commonwealth of Northern Mariana Islands.

* Individual cases can be reported through both the National Electronic Telecommunications System for Surveillance (NETSS) and the Public Health Laboratory Information System (PHLIS).

† Chlamydia refers to genital infections caused by *C. trachomatis*. Totals reported to the Division of STD Prevention, NCHSTP.

‡ Updated monthly from reports to the Division of HIV/AIDS Prevention—Surveillance and Epidemiology, National Center for HIV, STD, and TB Prevention. Last update November 26, 2000.

TABLE II. (Cont'd) Provisional cases of selected notifiable diseases, United States, weeks ending December 30, 2000, and January 1, 2000 (52nd Week)

Reporting Area	Gonorrhea		Hepatitis C; Non-A, Non-B		Legionellosis		Listeriosis	Lyme Disease	
	Cum. 2000 ^a	Cum. 1999	Cum. 2000	Cum. 1999	Cum. 2000	Cum. 1999	Cum. 2000	Cum. 2000	Cum. 1999
UNITED STATES	335,098	360,637	2,895	3,111	969	1,108	662	13,309	16,273
NEW ENGLAND	6,337	6,627	16	16	53	91	56	4,361	4,642
Maine	84	83	2	2	2	3	2	-	41
N.H.	107	115	-	-	4	10	4	84	27
Vt.	64	52	4	7	5	15	3	39	26
Mass.	2,777	2,455	4	4	16	27	27	1,098	787
R.I.	652	601	6	3	8	20	1	590	546
Conn.	2,653	3,321	-	-	18	16	19	2,550	3,215
MID. ATLANTIC	35,110	40,777	617	136	212	273	155	6,770	8,902
Upstate N.Y.	7,387	7,660	71	68	93	74	84	3,916	4,266
N.Y. City	10,369	12,203	-	-	6	44	30	111	136
N.J.	5,618	7,852	510	-	15	24	22	1,467	1,719
Pa.	11,736	13,062	36	68	98	131	19	1,276	2,781
E. N. CENTRAL	63,932	70,237	223	893	264	279	114	423	586
Ohio	14,636	18,141	12	4	122	85	59	89	47
Ind.	6,090	6,273	1	3	41	52	1	32	21
Ill.	19,243	23,254	19	48	18	33	11	-	17
Mich.	17,972	15,907	191	822	50	64	31	-	11
Wis.	5,991	6,662	-	16	33	45	5	291	490
W. N. CENTRAL	15,939	16,791	441	344	64	71	14	495	407
Minn.	2,874	2,830	7	25	13	18	5	393	283
Iowa	1,155	1,365	2	-	15	17	2	34	24
Mo.	7,584	8,187	414	315	25	22	5	45	72
N. Dak.	54	81	1	1	1	2	2	2	1
S. Dak.	278	192	-	-	2	6	-	-	-
Nebr.	1,343	1,471	7	3	4	6	-	4	11
Kans.	2,651	2,665	10	-	4	-	-	17	16
S. ATLANTIC	92,344	105,107	130	184	197	165	106	1,005	1,353
Del.	1,735	1,662	-	-	10	21	2	142	167
Md.	9,414	10,095	20	22	68	37	22	559	899
D.C.	2,772	3,533	3	1	7	5	-	11	6
Va.	10,200	9,402	3	11	33	41	9	146	122
W. Va.	502	561	20	21	N	N	5	34	20
N.C.	16,844	19,427	20	33	16	15	-	46	74
S.C.	11,071	15,035	3	22	6	12	9	17	6
Ga.	17,485	22,453	3	4	9	5	21	-	-
Fla.	22,321	22,939	58	70	48	29	38	50	59
E. S. CENTRAL	35,245	36,022	432	348	38	53	21	49	102
Ky.	3,411	3,349	37	28	21	22	4	13	19
Tenn.	11,704	11,380	100	123	12	24	13	28	59
Ala.	11,641	10,888	8	1	4	5	4	7	20
Miss.	8,489	10,405	287	196	1	2	-	1	4
W. S. CENTRAL	51,873	53,130	442	713	18	41	16	45	96
Ark.	2,963	3,226	9	31	-	1	1	4	7
La.	13,266	12,973	308	302	6	11	-	4	9
Okla.	4,117	4,021	10	18	5	7	7	1	8
Tex.	31,527	32,910	115	362	7	22	8	36	72
MOUNTAIN	9,900	9,508	414	237	47	49	43	31	17
Mont.	60	53	5	5	2	-	-	-	-
Idaho	98	89	3	8	5	3	-	4	3
Wyo.	51	43	318	88	2	-	1	9	3
Colo.	2,696	2,526	31	37	16	14	10	11	3
N. Mex.	1,076	975	16	34	1	1	2	-	1
Ariz.	4,134	4,265	21	49	8	7	21	-	3
Utah	230	254	2	6	12	18	4	3	2
Nev.	1,555	1,303	18	10	1	6	5	4	2
PACIFIC	24,418	22,438	180	240	76	86	137	130	168
Wash.	2,427	2,132	34	24	20	22	7	9	14
Oreg.	814	903	29	23	N	N	6	15	15
Calif.	20,440	18,638	115	193	56	62	121	104	139
Alaska	351	302	-	-	-	-	-	2	-
Hawaii	386	463	2	-	-	1	3	N	N
Guam	-	55	-	2	-	-	-	-	-
P.R.	589	321	1	-	1	-	-	N	N
V.I.	U	U	U	U	U	U	-	U	U
Amer. Samoa	U	U	U	U	U	U	-	U	U
C.N.M.I.	U	U	U	U	U	U	-	U	U

N: Not notifiable.

U: Unavailable.

-: No reported cases.

TABLE II. (Cont'd) Provisional cases of selected notifiable diseases, United States, weeks ending December 30, 2000, and January 1, 2000 (52nd Week)

Reporting Area	Malaria		Rabies, Animal		Salmonellosis*			
	Cum. 2000	Cum. 1999	Cum. 2000	Cum. 1999	NETSS		PHLIS	
					Cum. 2000	Cum. 1999	Cum. 2000	Cum. 1999
UNITED STATES	1,288	1,666	5,834	6,730	36,762	40,596	30,469	32,703
NEW ENGLAND	66	70	818	919	2,170	2,237	2,152	2,248
Maine	6	3	132	200	126	132	97	107
N.H.	1	2	21	47	147	141	141	137
Vt.	4	5	57	92	111	93	119	82
Mass.	27	22	276	226	1,212	1,208	1,189	1,224
R.I.	8	8	61	101	141	151	158	169
Conn.	20	30	271	253	433	512	448	529
MID. ATLANTIC	272	431	1,134	1,305	4,062	5,634	4,424	5,279
Upstate N.Y.	82	78	812	919	1,227	1,516	1,281	1,363
N.Y. City	120	251	U	U	962	1,457	899	1,527
N.J.	39	57	195	180	872	1,199	821	1,118
Pa.	31	45	127	206	1,001	1,462	1,423	1,271
E. N. CENTRAL	131	169	166	172	5,232	5,432	3,416	4,686
Ohio	23	18	52	36	1,626	1,313	1,352	1,091
Ind.	6	22	15	13	629	572	571	478
Ill.	54	77	22	10	1,441	1,600	176	1,568
Mich.	33	42	68	92	894	973	921	968
Wis.	15	10	9	21	642	974	396	581
W. N. CENTRAL	81	104	534	746	2,421	2,349	2,473	2,404
Minn.	40	71	96	120	584	626	656	708
Iowa	2	13	80	159	372	260	312	231
Mo.	21	14	50	31	706	758	894	878
N. Dak.	3	-	116	147	67	58	75	62
S. Dak.	1	-	90	180	101	100	105	118
Nebr.	7	1	2	4	222	214	140	180
Kans.	7	5	100	105	369	333	291	227
S. ATLANTIC	346	395	2,340	2,172	8,223	9,742	5,352	6,472
Del.	5	2	49	58	114	179	140	158
Md.	128	110	407	394	844	860	768	887
D.C.	17	19	-	-	64	76	U	U
Va.	50	76	559	581	998	1,286	839	1,035
W. Va.	4	4	113	115	172	189	148	154
N.C.	36	36	551	442	1,149	1,331	1,096	1,304
S.C.	2	19	155	149	740	702	540	530
Ga.	30	32	344	247	1,509	1,976	1,570	1,696
Fla.	74	97	162	186	2,633	3,143	251	708
E. S. CENTRAL	47	27	206	256	2,412	2,239	1,668	1,475
Ky.	18	7	21	35	385	419	262	294
Tenn.	12	9	103	95	671	593	755	593
Ala.	16	7	81	124	682	605	521	489
Miss.	1	4	1	2	674	622	130	99
W. S. CENTRAL	20	128	77	524	4,048	4,088	4,094	2,806
Ark.	3	3	20	31	715	698	632	265
La.	8	10	-	-	273	726	768	617
Okla.	9	2	57	94	393	466	289	352
Tex.	-	113	-	399	2,667	2,198	2,405	1,572
MOUNTAIN	53	46	270	272	2,781	3,071	2,199	2,615
Mont.	1	4	65	64	97	86	-	1
Idaho	5	3	9	6	132	135	97	97
Wyo.	-	1	77	45	72	70	51	59
Colo.	25	18	-	51	691	720	665	710
N. Mex.	-	4	21	9	241	370	182	292
Ariz.	9	7	79	81	790	924	734	820
Utah	6	4	10	8	500	566	470	587
Nev.	7	5	9	8	258	200	-	49
PACIFIC	272	296	289	364	5,413	5,804	4,691	4,718
Wash.	33	43	-	-	590	792	670	848
Oreg.	42	22	7	4	313	426	348	475
Calif.	186	218	258	351	4,212	4,193	3,424	3,070
Alaska	-	1	24	9	62	55	23	34
Hawaii	11	12	-	-	236	338	226	291
Guam	-	1	-	-	-	37	U	U
P.R.	5	3	81	74	627	715	U	U
V.I.	U	U	U	U	U	U	U	U
Amer. Samoa	U	U	U	U	U	U	U	U
C.N.M.I.	U	U	U	U	U	U	U	U

N: Not notifiable. U: Unavailable. -: No reported cases.

* Individual cases can be reported through both the National Electronic Telecommunications System for Surveillance (NETSS) and the Public Health Laboratory Information System (PHLIS).

TABLE II. (Cont'd) Provisional cases of selected notifiable diseases, United States, weeks ending December 30, 2000, and January 1, 2000 (52nd Week)

Reporting Area	Shigellosis*				Syphilis (Primary & Secondary)		Tuberculosis	
	NETSS		PHLIS		Cum. 2000	Cum. 1999	Cum. 2000	Cum. 1999
	Cum. 2000	Cum. 1999	Cum. 2000	Cum. 1999				
UNITED STATES	20,721	17,521	10,553	10,088	5,894	6,683	12,942	16,607
NEW ENGLAND	393	885	372	852	87	60	460	489
Maine	11	5	12	-	1	-	12	22
N.H.	7	19	8	17	2	1	19	19
Vt.	5	7	-	4	-	3	4	3
Mass.	273	748	247	731	62	37	302	270
R.I.	29	37	38	29	4	3	32	53
Conn.	68	69	67	71	18	16	91	122
MID. ATLANTIC	2,121	1,188	1,334	752	266	301	2,331	2,862
Upstate N.Y.	798	314	214	84	15	19	322	377
N.Y. City	740	353	476	247	123	130	1,250	1,460
N.J.	389	297	384	237	50	68	551	571
Pa.	194	224	260	184	78	84	208	454
E.N. CENTRAL	3,839	3,300	1,223	1,856	1,146	1,253	1,404	1,750
Ohio	442	422	312	149	70	92	314	317
Ind.	1,512	368	148	119	345	449	110	148
Ill.	995	1,330	103	1,018	355	422	670	825
Mich.	657	535	600	493	331	249	229	351
Wis.	233	645	60	77	45	41	81	109
W.N. CENTRAL	2,519	1,246	2,011	807	59	135	481	582
Minn.	837	254	891	254	13	10	165	201
Iowa	552	74	335	62	11	9	39	58
Mo.	658	721	472	354	27	96	196	208
N. Dak.	58	3	51	2	-	-	5	7
S. Dak.	8	18	4	10	-	-	16	21
Nebr.	154	87	117	68	2	6	23	18
Kans.	252	89	141	57	6	14	37	69
S. ATLANTIC	3,033	2,702	1,132	536	1,961	2,131	2,701	3,382
Del.	24	15	23	11	9	10	14	34
Md.	210	162	117	58	297	346	247	294
D.C.	80	53	U	U	48	45	38	53
Va.	448	136	346	66	126	153	289	334
W. Va.	22	9	17	5	2	5	33	41
N.C.	400	211	265	94	481	464	447	488
S.C.	136	122	92	64	212	259	135	226
Ga.	274	284	167	84	380	486	576	665
Fla.	1,439	1,710	105	154	406	383	922	1,247
E.S. CENTRAL	1,164	1,223	557	695	890	1,138	866	1,107
Ky.	516	235	115	149	82	101	114	209
Tenn.	343	691	361	472	521	642	305	382
Ala.	103	117	74	63	125	202	310	314
Miss.	202	180	7	11	162	193	137	202
W.S. CENTRAL	2,966	3,143	2,617	1,213	820	1,052	1,022	1,929
Ark.	211	76	58	26	95	87	159	181
La.	139	226	195	137	210	305	74	361
Okla.	126	560	44	172	128	187	130	208
Tex.	2,490	2,281	2,320	878	387	473	659	1,179
MOUNTAIN	1,324	1,164	760	772	230	241	522	567
Mont.	8	10	-	-	-	1	17	14
Idaho	45	28	25	12	1	1	19	16
Wyo.	5	3	3	1	1	-	4	3
Colo.	265	205	210	164	11	8	70	75
N. Mex.	186	152	99	108	21	12	37	64
Ariz.	610	602	342	413	189	212	237	262
Utah	83	66	81	68	2	2	49	40
Nev.	122	98	-	6	5	5	89	93
PACIFIC	3,362	2,670	547	2,605	435	372	3,155	3,939
Wash.	458	172	405	116	68	77	250	258
Oreg.	167	95	105	91	7	8	25	123
Calif.	2,689	2,364	-	2,358	358	283	2,652	3,313
Alaska	8	4	3	5	-	1	96	61
Hawaii	40	35	34	35	2	3	132	184
Guam	-	19	U	U	-	-	-	70
P.R.	33	141	U	U	173	146	119	200
V.I.	U	U	U	U	U	U	U	U
Amer. Samoa	U	U	U	U	U	U	U	U
C.N.M.I.	U	U	U	U	U	U	U	U

N: Not notifiable. U: Unavailable. -: No reported cases.

*Individual cases can be reported through both the National Electronic Telecommunications System for Surveillance (NETSS) and the Public Health Laboratory Information System (PHLIS).

TABLE III. Provisional cases of selected notifiable diseases preventable by vaccination, United States, weeks ending December 30, 2000, and January 1, 2000 (52nd Week)

Reporting Area	<i>H. influenzae</i> , Invasive		Hepatitis (Viral), By Type				Measles (Rubeola)					
	Cum. 2000 ¹	Cum. 1999	A		B		Indigenous		Imported*		Total	
			Cum. 2000	Cum. 1999	Cum. 2000	Cum. 1999	2000	Cum. 2000	2000	Cum. 2000	Cum. 2000	Cum. 1999
UNITED STATES	1,212	1,309	12,275	17,047	6,646	7,694	1	63	-	18	81	100
NEW ENGLAND	108	117	364	373	100	153	-	3	-	4	7	11
Maine	2	8	21	27	5	3	-	-	-	-	-	-
N.H.	13	19	19	18	19	17	-	2	-	1	3	1
Vt.	10	6	10	24	6	5	-	-	-	3	3	-
Mass.	41	41	123	142	19	44	-	1	-	-	1	8
R.I.	4	9	25	35	23	43	-	-	-	-	-	-
Conn.	38	34	166	127	28	41	-	-	-	-	-	2
MID. ATLANTIC	194	210	1,092	1,211	855	922	-	15	-	5	20	5
Upstate N.Y.	106	86	231	293	146	200	-	9	-	-	9	2
N.Y. City	43	57	385	403	436	293	-	6	-	4	10	3
N.J.	33	59	100	151	57	138	-	-	-	-	-	-
Pa.	12	8	376	364	216	291	-	-	-	1	1	-
E.N. CENTRAL	153	212	1,533	2,940	729	913	1	10	-	-	10	10
Ohio	55	63	271	655	107	95	1	3	-	-	3	-
Ind.	30	32	123	105	49	77	-	-	-	-	-	2
Ill.	55	89	639	849	123	202	-	4	-	-	4	2
Mich.	10	20	487	1,253	449	509	-	3	-	-	3	6
Wis.	3	8	13	78	1	30	-	-	-	-	-	-
W.N. CENTRAL	76	92	719	1,133	544	393	-	3	-	2	5	1
Minn.	46	57	187	128	43	80	-	-	-	1	1	1
Iowa	1	2	68	161	33	44	-	2	-	-	2	-
Mo.	17	14	306	712	395	227	-	-	-	-	-	-
N. Dak.	1	4	4	3	4	2	-	-	-	-	-	-
S. Dak.	1	4	3	10	2	3	-	-	-	1	-	-
Nebr.	3	5	41	53	44	22	-	-	-	-	-	-
Kans.	4	8	110	66	24	17	-	1	-	1	2	-
S. ATLANTIC	303	289	1,583	2,151	1,337	1,412	-	4	-	-	4	20
Del.	-	1	-	2	-	1	-	-	-	-	-	-
Md.	79	71	227	306	128	148	-	-	-	-	-	-
D.C.	-	5	40	59	35	25	-	-	-	-	-	-
Va.	40	24	154	185	166	106	-	2	-	-	2	18
W. Va.	9	8	56	47	25	29	-	-	-	-	-	-
N.C.	23	36	154	167	256	224	-	-	-	-	-	-
S.C.	15	6	86	48	23	64	U	-	U	-	-	-
Ga.	73	80	289	482	222	230	-	-	-	-	-	-
Fla.	64	58	577	855	482	585	-	2	-	-	2	2
E.S. CENTRAL	53	72	409	404	475	473	-	-	-	-	-	2
Ky.	12	9	59	67	80	50	-	-	-	-	-	2
Tenn.	26	40	147	147	218	207	U	-	U	-	-	-
Ala.	14	18	62	62	70	86	-	-	-	-	-	-
Miss.	1	5	141	128	107	130	-	-	-	-	-	-
W.S. CENTRAL	58	68	2,254	3,343	708	1,319	-	-	-	-	-	12
Ark.	2	2	112	81	78	98	-	-	-	-	-	5
La.	11	15	71	213	93	172	-	-	-	-	-	-
Okla.	43	47	256	533	156	185	-	-	-	-	-	-
Tex.	2	4	1,815	2,516	381	864	U	-	U	-	-	7
MOUNTAIN	124	117	1,024	1,258	591	614	-	12	-	1	13	2
Mont.	1	3	7	18	7	21	-	-	-	-	-	-
Idaho	4	2	46	47	10	29	-	-	-	-	-	-
Wyo.	1	1	47	9	41	14	-	-	-	-	-	-
Colo.	21	15	208	219	110	99	-	2	-	1	3	-
N. Mex.	25	19	70	55	116	215	-	-	-	-	-	-
Ariz.	55	63	493	700	219	138	-	-	-	-	-	1
Utah	11	10	68	64	33	39	-	3	-	-	3	-
Nev.	6	4	85	146	55	59	-	7	-	-	7	1
PACIFIC	143	132	3,297	4,234	1,307	1,495	-	16	-	6	22	37
Wash.	8	9	283	505	117	111	-	2	-	1	3	5
Oreg.	31	45	183	251	133	116	-	-	-	-	-	12
Calif.	33	54	2,807	3,439	1,034	1,234	-	13	-	2	15	17
Alaska	45	9	11	15	12	18	-	1	-	-	1	-
Hawaii	26	15	13	24	11	16	-	-	-	3	3	3
Guam	-	-	-	1	-	4	U	-	U	-	-	1
P.R.	4	2	232	417	260	307	-	-	-	-	-	1
V.I.	U	U	U	U	U	U	U	U	U	U	U	U
Amer. Samoa	U	U	U	U	U	U	U	U	U	U	U	U
C.N.M.I.	U	U	U	U	U	U	U	U	U	U	U	U

N: Not notifiable. U: Unavailable. -: No reported cases.

*For imported measles, cases include only those resulting from importation from other countries.

¹Of 256 cases among children aged <5 years, serotype was reported for 113 and of those, 24 were type b.

TABLE III. (Cont'd) Provisional cases of selected notifiable diseases preventable by vaccination, United States, weeks ending December 30, 2000, and January 1, 2000 (52nd Week)

Reporting Area	Meningococcal Disease		Mumps			Pertussis			Rubella		
	Cum. 2000	Cum. 1999	2000	Cum. 2000	Cum. 1999	2000	Cum. 2000	Cum. 1999	2000	Cum. 2000	Cum. 1999
UNITED STATES	2,035	2,501	7	323	391	86	6,755	7,298	-	152	271
NEW ENGLAND	124	115	-	5	9	5	1,647	978	-	13	7
Maine	8	5	-	-	-	-	45	33	-	-	-
N.H.	12	13	-	-	2	2	128	116	-	2	-
Vt.	4	5	-	-	1	1	252	96	-	-	-
Mass.	72	66	-	1	4	-	1,151	649	-	9	7
R.I.	9	9	-	1	2	-	23	49	-	1	-
Conn.	19	17	-	3	-	2	48	35	-	1	-
MID. ATLANTIC	194	237	1	28	47	16	674	1,329	-	10	36
Upstate N.Y.	65	80	-	12	14	15	335	1,020	-	2	21
N.Y. City	38	57	-	6	12	-	76	61	-	8	7
N.J.	46	52	1	4	2	1	43	29	-	4	5
Pa.	45	48	-	6	19	-	220	219	-	-	3
E.N. CENTRAL	366	423	2	33	56	23	807	743	-	1	2
Ohio	96	134	1	9	21	23	392	322	-	-	-
Ind.	48	76	-	1	5	-	126	90	-	-	1
Ill.	79	111	-	6	16	-	82	140	-	1	1
Mich.	106	64	1	17	10	-	125	74	-	-	-
Wis.	37	38	-	-	4	-	82	117	-	-	-
W.N. CENTRAL	157	243	-	20	16	1	659	571	-	3	141
Minn.	22	56	-	-	1	-	398	281	-	1	5
Iowa	37	42	-	8	8	1	60	111	-	-	30
Mo.	70	94	-	4	1	-	110	75	-	1	2
N. Dak.	3	4	-	-	1	-	7	31	-	-	-
S. Dak.	6	11	-	-	-	-	11	8	-	-	-
Nebr.	8	13	-	4	1	-	33	9	-	1	103
Kans.	11	23	-	4	4	-	40	56	-	-	1
S. ATLANTIC	319	446	1	49	55	2	521	500	-	95	40
Del.	1	10	-	-	-	-	9	8	-	1	-
Md.	27	55	-	10	6	1	136	124	-	-	1
D.C.	-	4	-	-	2	-	3	1	-	-	-
Va.	42	60	-	11	11	-	115	65	-	-	-
W. Va.	13	9	-	-	-	-	1	6	-	-	-
N.C.	39	49	1	8	9	1	111	104	-	82	38
S.C.	26	48	U	11	6	U	41	27	U	10	-
Ga.	48	72	-	2	4	-	40	52	-	-	-
Fla.	123	139	-	7	17	-	65	113	-	2	1
E.S. CENTRAL	131	161	-	9	15	-	112	118	-	5	2
Ky.	26	35	-	1	-	-	56	49	-	1	-
Tenn.	56	65	U	2	-	U	34	45	U	1	-
Ala.	35	38	-	4	11	-	21	21	-	3	2
Miss.	14	23	-	2	4	-	1	3	-	-	-
W.S. CENTRAL	134	260	-	31	50	-	338	230	-	6	22
Ark.	15	35	-	5	-	-	36	26	-	-	12
La.	35	70	-	4	11	-	12	9	-	1	-
Okla.	28	40	-	-	4	-	41	43	-	-	1
Tex.	56	115	U	22	35	U	249	152	U	5	9
MOUNTAIN	173	149	2	29	27	32	852	829	-	2	16
Mont.	6	5	-	1	-	-	35	2	-	-	-
Idaho	7	14	-	1	4	-	64	146	-	-	-
Wyo.	4	5	-	4	-	-	6	2	-	-	-
Colo.	34	39	-	3	6	-	457	313	-	1	1
N. Mex.	12	16	-	1	N	-	91	155	-	-	-
Ariz.	97	45	2	6	8	24	143	139	-	1	13
Utah	8	17	-	7	4	8	41	58	-	-	1
Nev.	5	8	-	6	5	-	15	14	-	-	1
PACIFIC	437	467	1	119	116	7	1,145	2,000	-	17	5
Wash.	69	93	-	11	2	7	427	739	-	7	-
Oreg.	77	76	N	N	N	-	114	61	-	-	-
Calif.	274	280	1	87	95	-	550	1,144	-	10	5
Alaska	9	8	-	7	3	-	22	5	-	-	-
Hawaii	8	10	-	14	16	-	32	51	-	-	-
Guam	-	1	U	-	3	U	-	2	U	-	-
P.R.	9	15	-	-	1	-	7	33	-	-	2
V.I.	U	U	U	U	U	U	U	U	U	U	U
Amer. Samoa	U	U	U	U	U	U	U	U	U	U	U
C.N.M.I.	U	U	U	U	U	U	U	U	U	U	U

N: Not notifiable.

U: Unavailable.

-: No reported cases.

**TABLE IV. Deaths in 122 U.S. cities,* week ending
December 30, 2000 (52nd Week)**

Reporting Area	All Causes, By Age (Years)						P&J [†] Total	Reporting Area	All Causes, By Age (Years)						P&J [†] Total
	All Ages	≥65	45-64	25-44	1-24	<1			All Ages	≥65	45-64	25-44	1-24	<1	
NEW ENGLAND	395	288	66	28	8	5	37	S. ATLANTIC	1,037	655	217	112	43	10	81
Boston, Mass.	U	U	U	U	U	U	U	Atlanta, Ga.	154	97	30	21	5	1	1
Bridgeport, Conn.	45	35	7	3	-	-	1	Baltimore, Md.	188	110	44	27	4	3	19
Cambridge, Mass.	26	21	1	3	1	-	3	Charlotte, N.C.	91	64	17	3	6	1	8
Fall River, Mass.	40	31	5	3	1	-	7	Jacksonville, Fla.	107	63	28	12	3	1	11
Hartford, Conn.	56	37	10	5	1	3	2	Miami, Fla.	95	52	25	11	6	1	11
Lowell, Mass.	25	20	4	1	-	-	-	Norfolk, Va.	36	26	3	4	3	-	1
Lynn, Mass.	16	10	5	1	-	-	2	Richmond, Va.	64	37	11	7	8	1	6
New Bedford, Mass.	19	15	1	1	2	-	2	Savannah, Ga.	49	37	9	2	1	-	5
New Haven, Conn.	37	22	9	5	1	-	2	St. Petersburg, Fla.	21	15	5	-	1	-	3
Providence, R.I.	U	U	U	U	U	U	U	Tampa, Fla.	132	90	20	16	5	1	11
Somerville, Mass.	3	2	1	-	-	-	2	Washington, D.C.	100	64	25	9	1	1	5
Springfield, Mass.	32	22	7	3	-	-	4	Wilmington, Del.	U	U	U	U	U	U	U
Waterbury, Conn.	38	31	4	-	1	2	2	E.S. CENTRAL	485	318	120	32	5	10	38
Worcester, Mass.	58	42	12	3	1	-	10	Birmingham, Ala.	57	34	17	4	1	1	6
MID. ATLANTIC	2,278	1,636	433	134	39	36	130	Chattanooga, Tenn.	60	43	10	6	-	1	5
Albany, N.Y.	61	48	7	1	2	3	2	Knoxville, Tenn.	71	50	14	4	2	1	3
Allentown, Pa.	20	15	3	2	-	-	1	Lexington, Ky.	37	20	12	3	1	1	2
Buffalo, N.Y.	124	96	19	5	3	1	12	Memphis, Tenn.	166	113	39	10	1	3	17
Camden, N.J.	26	17	5	3	-	1	3	Mobile, Ala.	84	51	26	4	-	3	4
Elizabeth, N.J.	16	12	3	1	-	-	-	Montgomery, Ala.	10	7	2	1	-	-	1
Erie, Pa.§	36	26	9	1	-	-	1	Nashville, Tenn.	U	U	U	U	U	U	U
Jersey City, N.J.	40	32	4	2	1	1	-	W.S. CENTRAL	992	661	204	66	37	24	77
New York City, N.Y.	1,135	798	221	80	19	17	56	Austin, Tex.	119	95	20	3	1	-	6
Newark, N.J.	U	U	U	U	U	U	U	Baton Rouge, La.	1	-	-	1	-	-	-
Paterson, N.J.	27	15	6	4	2	-	2	Corpus Christi, Tex.	57	39	10	6	1	1	5
Philadelphia, Pa.	360	239	86	26	4	5	11	Dallas, Tex.	172	114	38	9	9	2	12
Pittsburgh, Pa.§	36	22	11	1	-	2	3	El Paso, Tex.	U	U	U	U	U	U	U
Reading, Pa.	26	20	5	1	-	-	1	Ft. Worth, Tex.	76	57	12	4	-	3	2
Rochester, N.Y.	162	133	18	2	6	3	21	Houston, Tex.	321	179	79	32	18	13	32
Schenectady, N.Y.	34	29	4	1	-	-	4	Little Rock, Ark.	U	U	U	U	U	U	U
Scranton, Pa.§	29	24	4	1	-	-	1	New Orleans, La.	U	U	U	U	U	U	U
Syracuse, N.Y.	95	72	17	3	1	2	11	San Antonio, Tex.	168	120	30	9	5	4	13
Trenton, N.J.	23	14	8	-	1	-	1	Shreveport, La.	U	U	U	U	U	U	U
Utica, N.Y.	28	24	3	-	1	-	1	Tulsa, Okla.	78	57	15	2	3	1	7
Yonkers, N.Y.	U	U	U	U	U	U	U	MOUNTAIN	811	570	156	47	16	22	64
E.N. CENTRAL	1,467	1,042	280	92	24	29	106	Albuquerque, N.M.	76	54	17	5	-	-	4
Akron, Ohio	50	35	11	2	-	2	6	Boise, Idaho	39	32	5	2	-	-	5
Canton, Ohio	31	24	6	1	-	-	7	Colo. Springs, Colo.	59	43	13	1	-	2	3
Chicago, Ill.	U	U	U	U	U	U	U	Denver, Colo.	122	76	23	10	3	10	12
Cincinnati, Ohio	81	60	11	6	2	9	9	Las Vegas, Nev.	211	150	45	13	1	2	12
Cleveland, Ohio	121	70	32	8	3	8	6	Ogden, Utah	22	17	1	2	2	-	4
Columbus, Ohio	175	132	23	12	4	4	8	Phoenix, Ariz.	148	101	34	7	3	3	10
Dayton, Ohio	87	67	14	5	-	1	2	Pueblo, Colo.	37	29	6	2	-	-	3
Detroit, Mich.	156	79	48	21	4	4	11	Salt Lake City, Utah	97	68	12	5	7	5	11
Evansville, Ind.	31	26	4	1	-	-	3	Tucson, Ariz.	U	U	U	U	U	U	U
Fort Wayne, Ind.	46	36	10	1	-	-	1	PACIFIC	1,068	729	215	81	20	20	98
Gary, Ind.	10	5	3	2	-	-	-	Berkeley, Calif.	16	12	3	1	-	-	3
Grand Rapids, Mich.	54	44	8	-	2	-	5	Fresno, Calif.	U	U	U	U	U	U	U
Indianapolis, Ind.	182	125	40	10	1	6	17	Glendale, Calif.	10	7	2	1	-	-	-
Lansing, Mich.	26	21	5	-	-	-	1	Honolulu, Hawaii	63	46	11	3	1	2	8
Milwaukee, Wis.	99	70	19	7	3	-	6	Long Beach, Calif.	U	U	U	U	U	U	U
Peoria, Ill.	66	52	13	1	-	-	7	Los Angeles, Calif.	129	74	32	16	6	1	10
Rockford, Ill.	64	47	6	7	3	1	2	Pasadena, Calif.	27	22	4	1	-	-	2
South Bend, Ind.	58	44	12	2	-	-	3	Portland, Oreg.	U	U	U	U	U	U	U
Toledo, Ohio	79	62	12	3	2	-	10	Sacramento, Calif.	135	96	27	6	1	4	10
Youngstown, Ohio	51	44	3	3	-	1	2	San Diego, Calif.	129	89	26	11	-	3	8
W.N. CENTRAL	582	414	99	46	10	13	57	San Francisco, Calif.	136	88	30	10	5	3	18
Des Moines, Iowa	81	57	17	4	1	2	11	San Jose, Calif.	152	105	26	9	5	7	15
Duluth, Minn.	19	17	1	-	-	1	3	Santa Cruz, Calif.	33	27	5	1	-	-	4
Kansas City, Kans.	23	14	3	6	-	-	2	Seattle, Wash.	99	66	21	11	1	-	8
Kansas City, Mo.	115	68	25	15	2	5	7	Spokane, Wash.	61	42	14	5	-	-	7
Lincoln, Nebr.	25	17	6	1	1	-	6	Tacoma, Wash.	78	55	14	6	1	-	5
Minneapolis, Minn.	192	144	31	14	2	1	21	TOTAL	9,115	6,313	1,790	638	202	169	688
Omaha, Nebr.	U	U	U	U	U	U	U								
St. Louis, Mo.	U	U	U	U	U	U	U								
St. Paul, Minn.	61	47	7	3	3	1	2								
Wichita, Kans.	66	50	9	3	1	3	5								

U: Unavailable. -:No reported cases.

*Mortality data in this table are voluntarily reported from 122 cities in the United States, most of which have populations of $\geq 100,000$. A death is reported by the place of its occurrence and by the week that the death certificate was filed. Fetal deaths are not included.

†Pneumonia and influenza.

§Because of changes in reporting methods in this Pennsylvania city, these numbers are partial counts for the current week. Complete counts will be available in 4 to 6 weeks.

¶Total includes unknown ages.

Contributors to the Production of the *MMWR* (Weekly)

Weekly Notifiable Disease Morbidity Data and 122 Cities Mortality Data

Samuel L. Groseclose, D.V.M., M.P.H.

State Support Team

Robert Fagan
Jose Aponte
Gerald Jones
David Nitschke
Scott Noldy
Carol A. Worsham

CDC Operations Team

Carol M. Knowles
Deborah A. Adams
Willie J. Anderson
Patsy A. Hall
Suzette A. Park
Felicia J. Perry
Pearl Sharp

Informatics

T. Demetri Vacalis, Ph.D.

Michele D. Renshaw

Erica R. Shaver

The *Morbidity and Mortality Weekly Report (MMWR)* Series is prepared by the Centers for Disease Control and Prevention (CDC) and is available free of charge in electronic format and on a paid subscription basis for paper copy. To receive an electronic copy on Friday of each week, send an e-mail message to listserv@listserv.cdc.gov. The body content should read *SUBscribe mmwr-toc*. Electronic copy also is available from CDC's World-Wide Web server at <http://www.cdc.gov/mmwr> or from CDC's file transfer protocol server at <ftp://ftp.cdc.gov/pub/Publications/mmwr>. To subscribe for paper copy, contact Superintendent of Documents, U.S. Government Printing Office, Washington, DC 20402; telephone (202) 512-1800.

Data in the weekly *MMWR* are provisional, based on weekly reports to CDC by state health departments. The reporting week concludes at close of business on Friday; compiled data on a national basis are officially released to the public on the following Friday. Address inquiries about the *MMWR* Series, including material to be considered for publication, to: Editor, *MMWR* Series, Mailstop C-08, CDC, 1600 Clifton Rd., N.E., Atlanta, GA 30333; telephone (888) 232-3228.

All material in the *MMWR* Series is in the public domain and may be used and reprinted without permission; citation as to source, however, is appreciated.

Director, Centers for Disease Control and Prevention Jeffrey P. Koplan, M.D., M.P.H.	Director, Epidemiology Program Office Stephen B. Thacker, M.D., M.Sc.	Writers-Editors, <i>MMWR</i> (Weekly) Jill Crane David C. Johnson
Deputy Director for Science and Public Health, Centers for Disease Control and Prevention David W. Fleming, M.D.	Editor, <i>MMWR</i> Series John W. Ward, M.D.	Desktop Publishing Lynda G. Cupell Morie M. Higgins
	Acting Managing Editor, <i>MMWR</i> (Weekly) Teresa F. Rutledge	

☆U.S. Government Printing Office: 2001-633-173/48201 Region IV

**DEPARTMENT OF
HEALTH AND HUMAN SERVICES**
Centers for Disease Control
and Prevention (CDC)
Atlanta, Georgia 30333

Official Business
Penalty for Private Use \$300
Return Service Requested

**FIRST-CLASS MAIL
POSTAGE & FEES PAID
PHS/CDC
Permit No. G-284**

The *Morbidity and Mortality Weekly Report (MMWR)* Series is prepared by the Centers for Disease Control and Prevention (CDC) and is available free of charge in electronic format and on a paid subscription basis for paper copy. To receive an electronic copy on Friday of each week, send an e-mail message to listserv@listserv.cdc.gov. The body content should read *SUBscribe mmwr-toc*. Electronic copy also is available from CDC's World-Wide Web server at <http://www.cdc.gov/mmwr> or from CDC's file transfer protocol server at <ftp://ftp.cdc.gov/pub/Publications/mmwr>. To subscribe for paper copy, contact Superintendent of Documents, U.S. Government Printing Office, Washington, DC 20402; telephone (202) 512-1800.

Data in the weekly *MMWR* are provisional, based on weekly reports to CDC by state health departments. The reporting week concludes at close of business on Friday; compiled data on a national basis are officially released to the public on the following Friday. Address inquiries about the *MMWR* Series, including material to be considered for publication, to: Editor, *MMWR* Series, Mailstop C-08, CDC, 1600 Clifton Rd., N.E., Atlanta, GA 30333; telephone (888) 232-3228.

All material in the *MMWR* Series is in the public domain and may be used and reprinted without permission; citation as to source, however, is appreciated.

Director, Centers for Disease Control and Prevention Jeffrey P. Koplan, M.D., M.P.H.	Director, Epidemiology Program Office Stephen B. Thacker, M.D., M.Sc.	Writers-Editors, <i>MMWR</i> (Weekly) Jill Crane David C. Johnson
Deputy Director for Science and Public Health, Centers for Disease Control and Prevention David W. Fleming, M.D.	Editor, <i>MMWR</i> Series John W. Ward, M.D.	Desktop Publishing Lynda G. Cupell Morie M. Higgins
	Acting Managing Editor, <i>MMWR</i> (Weekly) Teresa F. Rutledge	

☆U.S. Government Printing Office: 2001-633-173/48201 Region IV

**UNITED STATES GOVERNMENT PRINTING
OFFICE**
SUPERINTENDENT OF DOCUMENTS
Washington, D. C. 20402

Official Business
Penalty for Private Use \$300
Return Service Requested

BULK RATE
POSTAGE & FEES PAID
GPO
Permit No. G-26